

# Framework 32 SAMS Runs

---

Dvora Hart, NEFSC, Woods Hole MA

October 23, 2019

# Constructing Interpretable Alternatives

---

1. First, develop a “base run”, with reasonable specifications of open area days (or fishing mortality), access area trips and new closures.
2. Pivot off the base run, by varying, one at a time, open days, access area trips and new closures.
3. After seeing the results of the alternatives, a preferred alternative can be developed by mixing and matching the above choices for open bottom, access areas, and closures.

This approach makes it both more easy to see the effects of different measures, and is much easier to run.

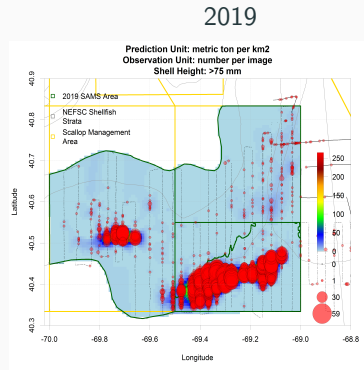
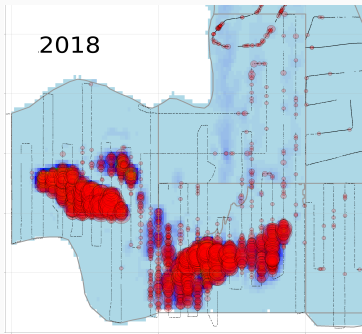
## Open area days-at-sea for 2020

Correspondence between  $F$  and DAS depends on status of NLS-West and CA-II-Ext. Converting NLS-West to open bottom adds about one DAS at the same open  $F$ . Closing CA-II-Ext loses 3-4 DAS at the same open  $F$ . The table below assumes CA-II-Ext is open bottom but NLS-West is not.

$F$	DAS	Open Landings (mt)	(thousand lbs)
0.23	18	7190	15851
0.295	24	9023	19892
0.4	31	11454	25251

# High mortality in the Nantucket Lightship West area

Higher than anticipated mortality in the NLS-West area - about 30 thousand tons of biomass disappeared. Natural, discard and incidental fishing mortality are all possibilities.



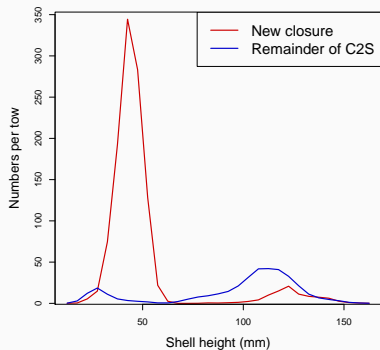
## Available Potential Access Areas

---

- Closed Area I, half trip maybe (model thinks  $F = 0.6$  for a half trip)
- Closed Area II-South, full trip
- Nantucket Lightship North + South Shallow, half trip
- Nantucket Lightship South (Peter Pans), one or many trips
- Mid-Atlantic Access, 2-3 trips

## Potential closures

- Box inside Closed Area II-South (lots of seed observed in the surveys)
- Closed Area II Extension



## Projected Biomass in 2020 by Area

Area	Biomass (mt)	Expl Biomass (mt)
CA-I	4321	3262
CA-II (S)	14908	10158
NLS (N)	3953	3275
NLS (SS)	4598	2584
NLS (SD)	45226	18589
NLS (W)	3703	2502
HCS	9022	6956
ET	31588	28151
Open	45320	31281

Full trip = 2700 mt, 1 FTDAS  $\approx$  400 mt