

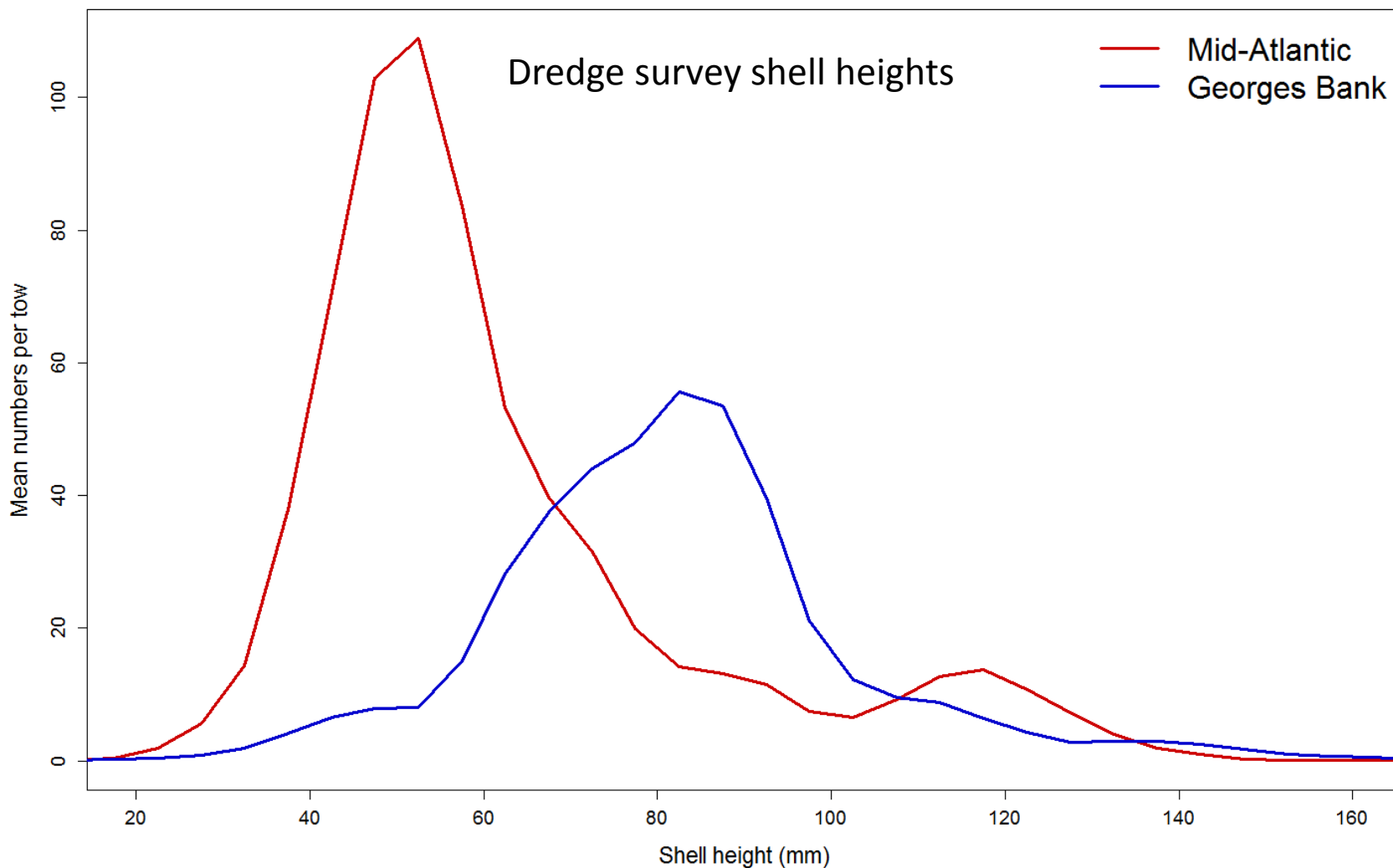


Sea scallop assessment update and ABC/OFL estimates for 2016

Dvora Hart
NEFSC, Woods Hole

Draft document for PDT discussion purposes only
Do not distribute

Large year classes of juvenile scallops were observed in both the Mid-Atlantic (2013 yc) and Georges Bank (2012 yc)
Relatively low numbers of commercial-sized scallops

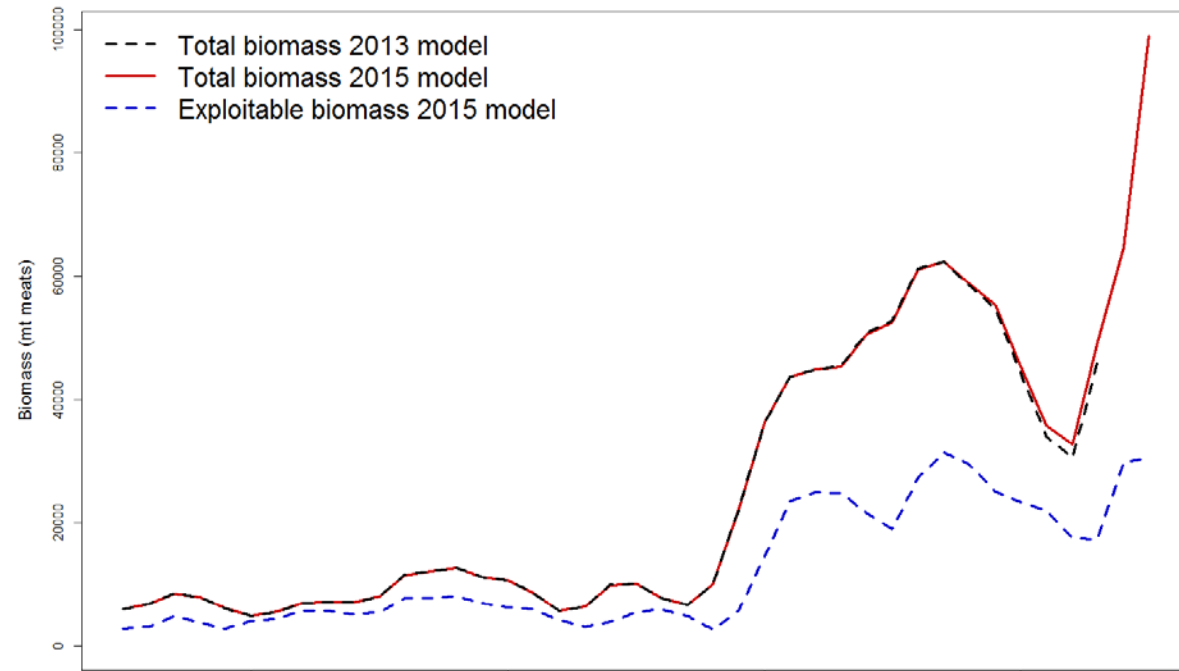


CASA model updates

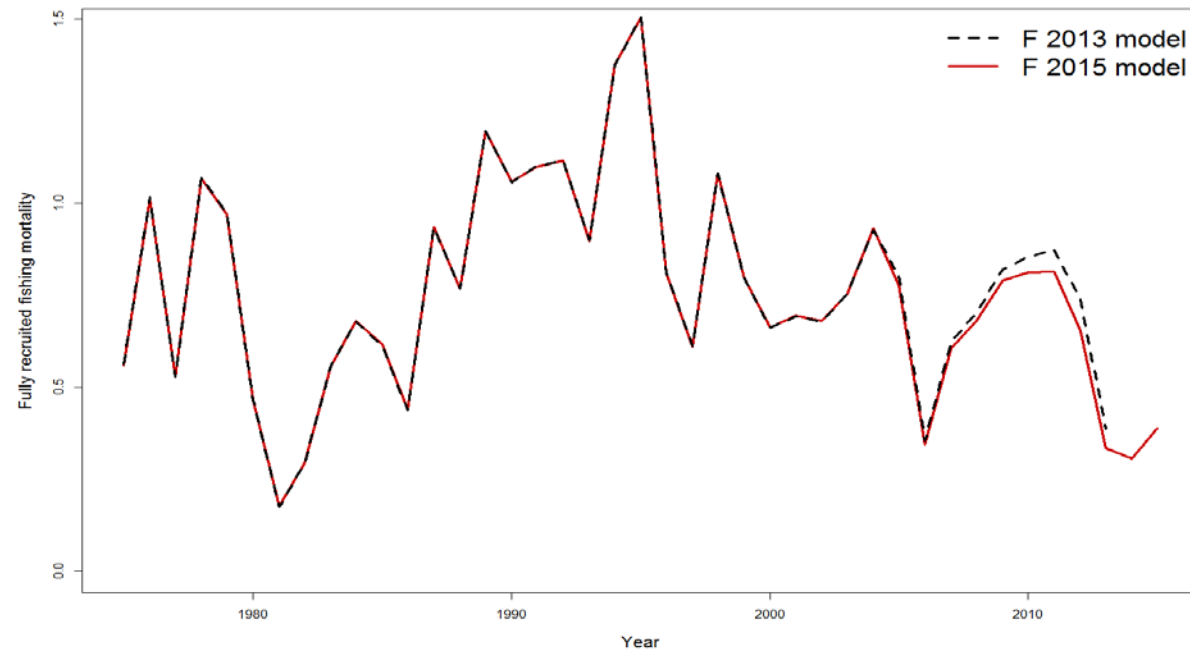
Last benchmark assessment used data through 2013

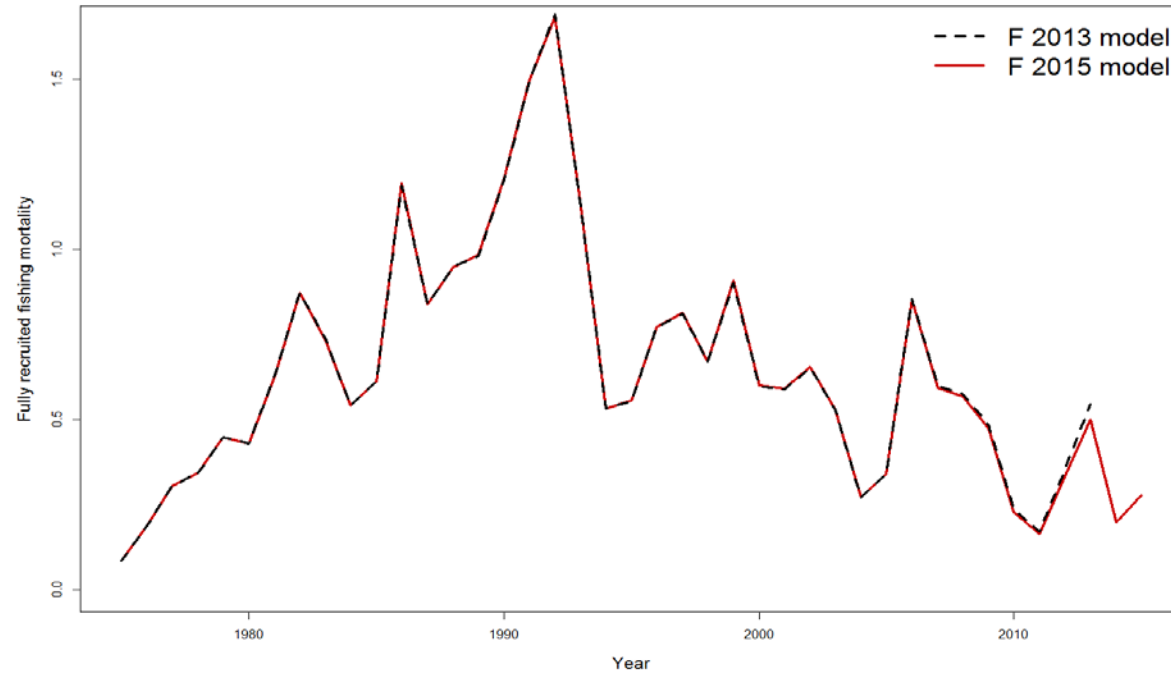
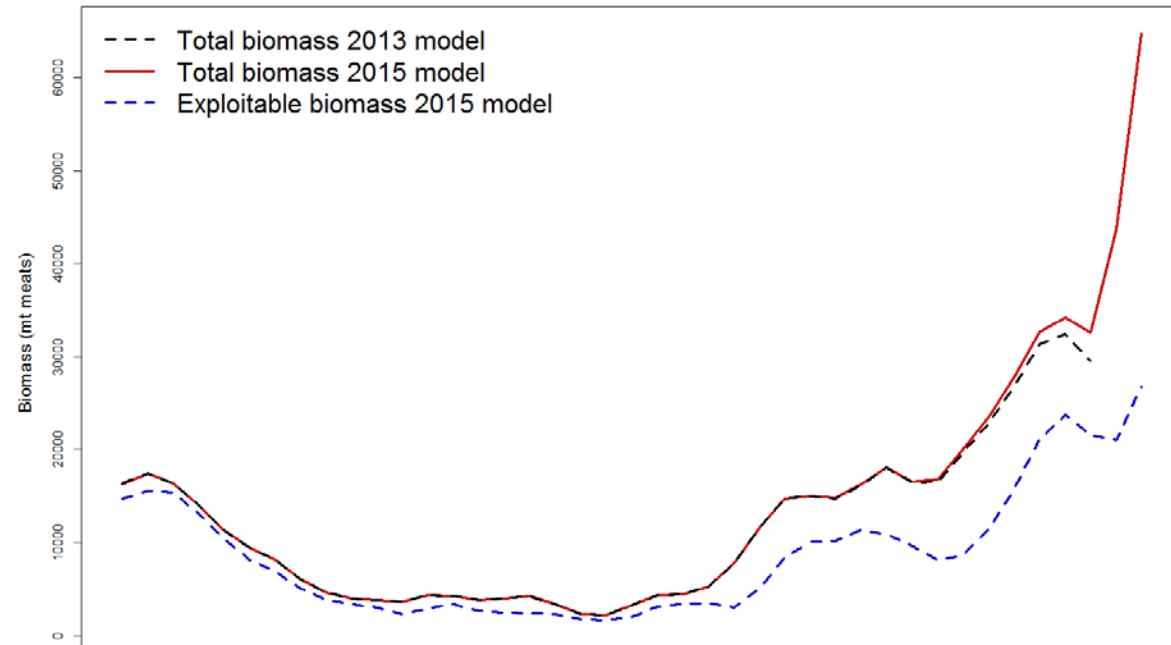
Three areas modeled: Mid-Atlantic, Georges Bank open and Georges Bank closed

Updated with 2014-2015 data (2015 survey and estimated landings only)

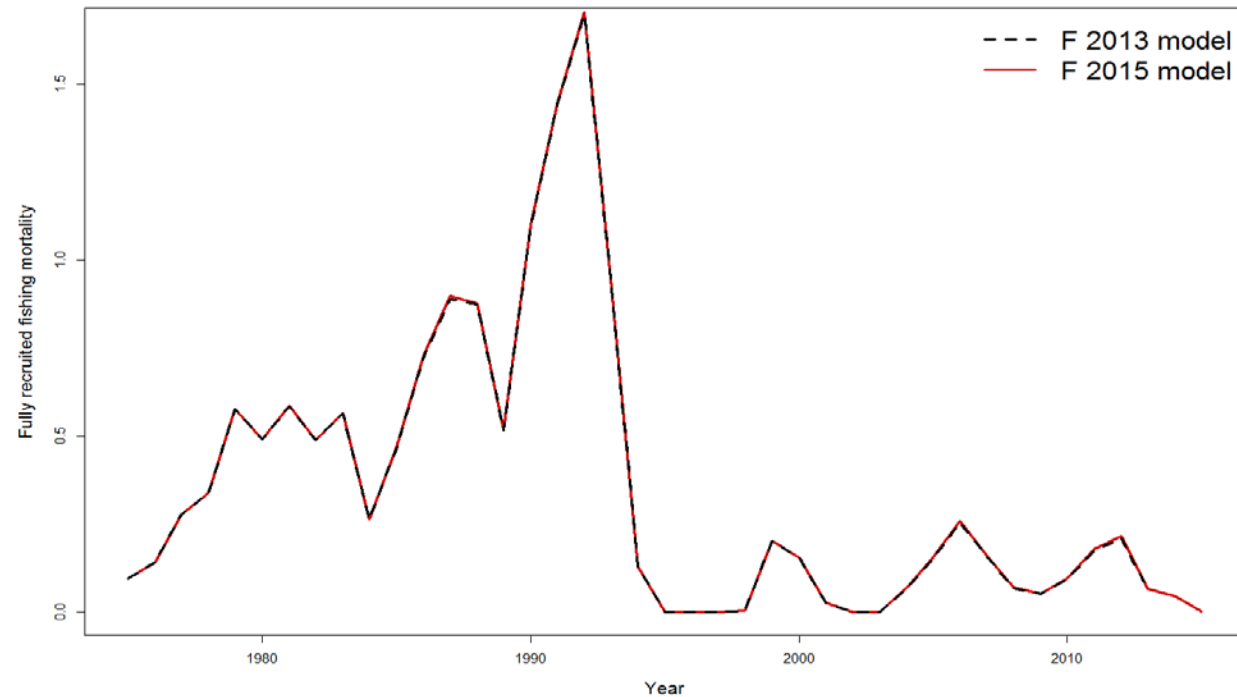
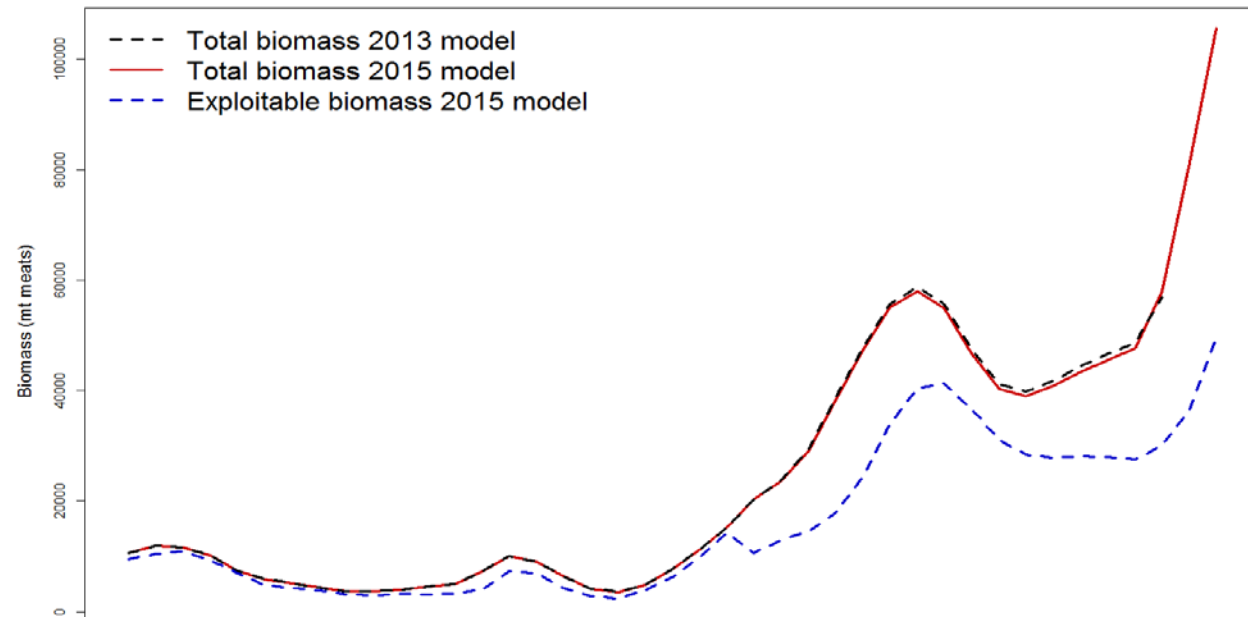


CASA model
estimates for
Mid-Atlantic Bight

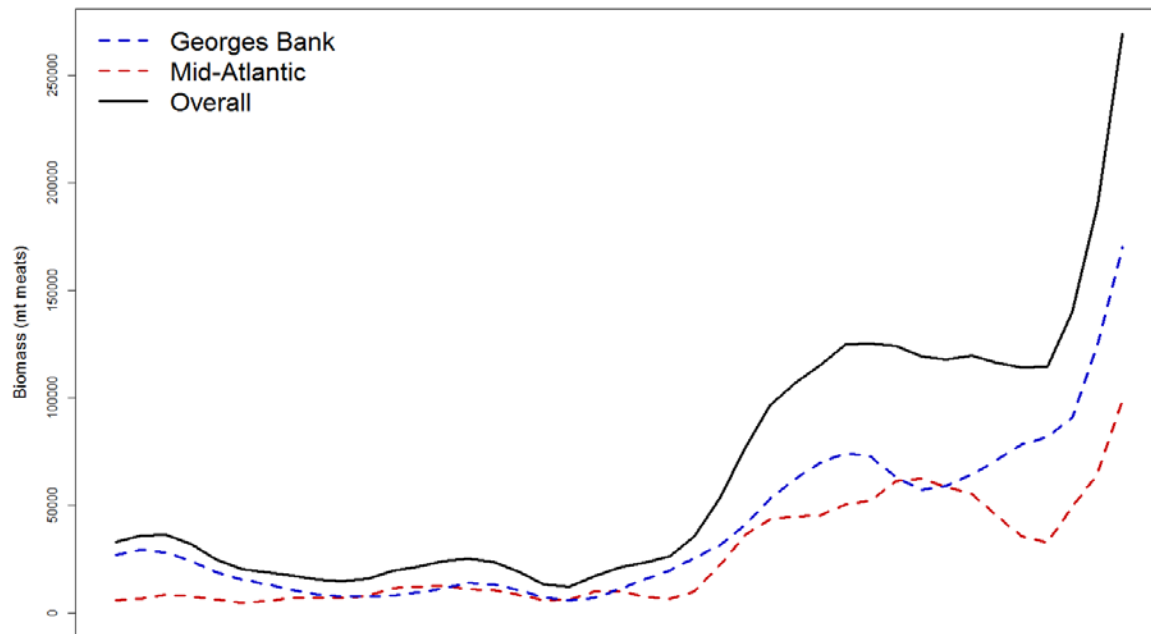




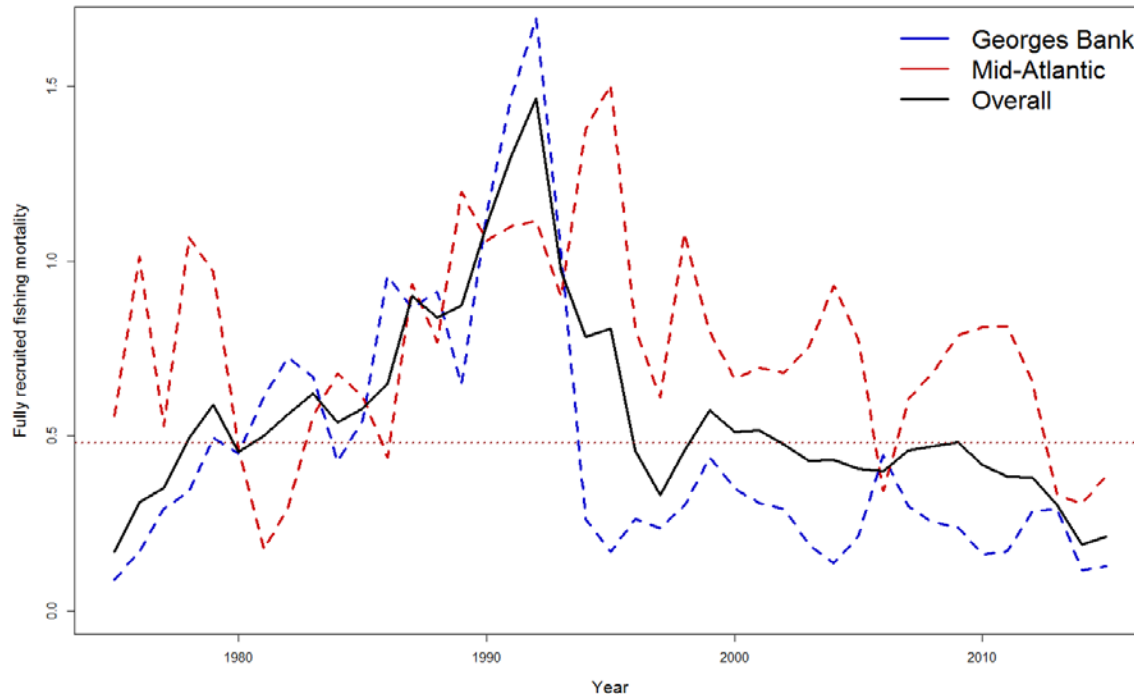
CASA model
 estimates for
 Georges Bank
 open (includes
 NLS-ext)



CASA model estimates for Georges Bank closed (2015 biomass probably an overestimate)



**Combined CASA
model estimates**



**Biomass over
target, F under
threshold, i.e., not
overfished, not
overfishing**

2016-2017 ABC and OFL Estimates

SAMS forecasting model initialized to 2015 survey data

For ABC/OFL, all areas are fished @ 0.38

For OFL, all areas are fished @ 0.48

Note that because of closed areas, etc., actual 2016-17 landings will be much lower than ABC/ACL
Actual discards will be much much lower than ABC/ACL estimates

Sea Scallop ABC/OFL estimates for 2016/2017

Year	GBBms	MABms	TotBms	ExplBms	ABC Land	Discards	ABC Total	OFL Land	Discards	OFL Total
2015	90704	106024	196728	57009	25352*	6107*	31459*			38061*
2016	142690	169354	312044	76302	37852	17885	55737	45997	22421	68418
2017	165102	202141	367243	153333	62929	19460	82389	76084	23604	99688
<i>*2015 ABC and OFL from FW 26</i>										

The model expects a tripling of exploitable biomass between 2015 and 2017

In the past, very large year classes experienced above average natural mortality – may already be observing this in GB

Such density-dependent natural mortality is not built into the current forecasting model. If such density-dependence occurs again, biomass, ABC and OFLs for 2016 and especially 2017 would be overestimated

Suggest keeping 2017 defaults at 2016 levels – will be updated next year