

Scallop Committee Meeting

**Jonathon Peros, NEFMC Staff,
Scallop PDT Chair**

Oct. 17, 2016 – Boston, MA



New England
Fishery Management Council

Today's Meeting:

- **Goal 1: Provide tasking to the PDT on development of FW28 measures**
 - Specifications runs (refine)
 - Committee Tasking from Sept. (CA I & NGOM)
- **Goal 2: Input on 2017 Scallop Work Priorities**

Outlook:

- 2 weeks until next AP/CTE meeting (select preferred alts)
- 1 month until Final Action.

Updates

- Two scallop related alternatives currently included in Groundfish Framework 56
 - Northern windowpane sub-ACL for scallop fishery (Dual % CBR)
 - **NEW Alternative as of Sept. Meeting:** Modify part of the GB YT AM trigger for scallop fishery (150%)
- Final year end groundfish catch report for FY2015 has been released.
 - Southern windowpane AM triggered for FY2017 (gear mod)
 - High catch of northern windowpane (~120mt)
 - GBYT catch estimated ~30mt (this is with CAI S closed)



Agenda – FW 28, Specifications

- Recap Committee Tasking re: Specification Runs
- Review new information, and AP motions from Oct. 13 joint meeting
- PDT update on Committee Tasking:
 - Potential approaches for CA I carryover trips
 - NGOM TAC options



Potential Fishery Specifications

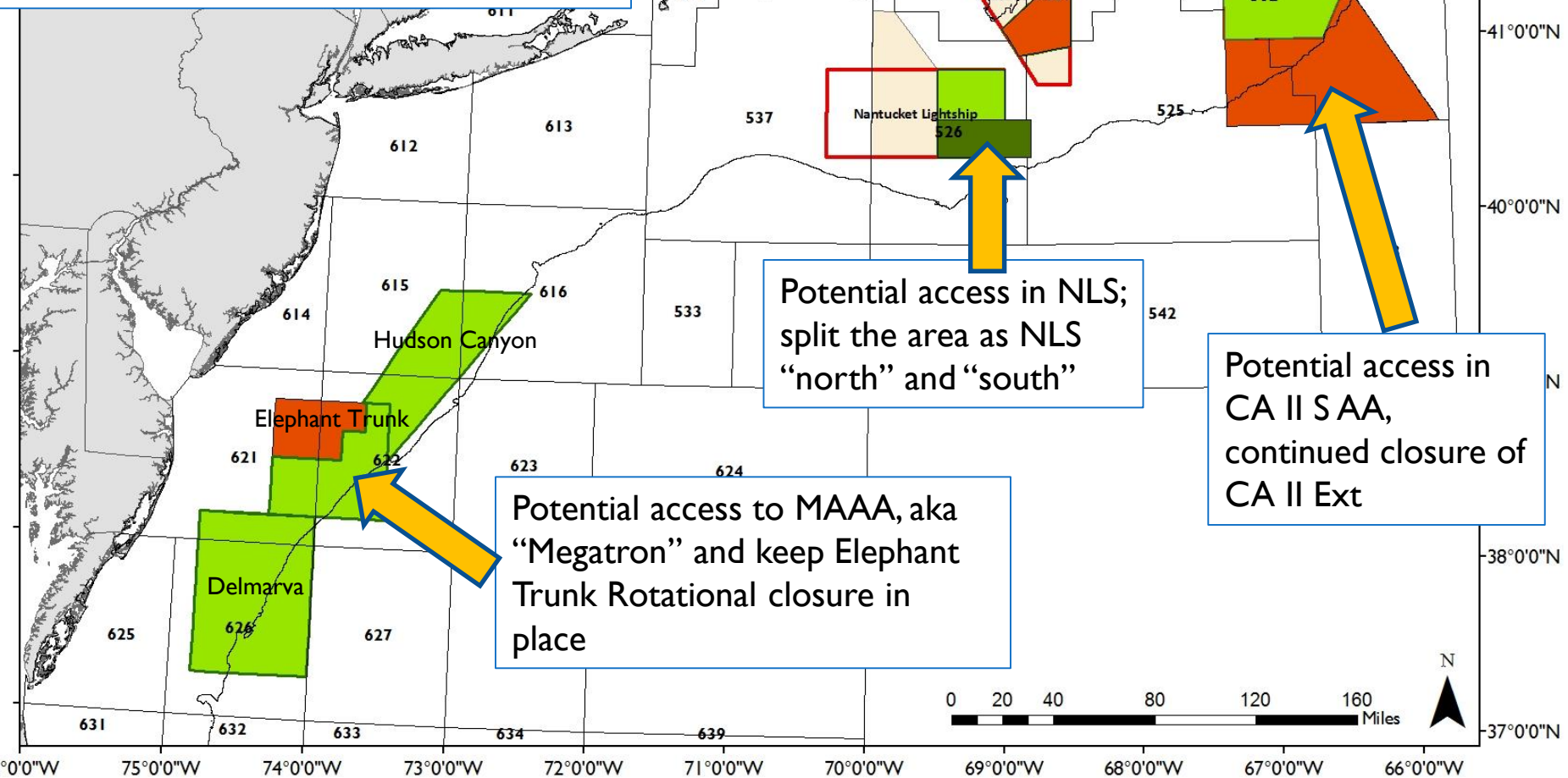
- **No Action – Default measures for FY2017**
 - 34.55 DAS (Set equal to FY2016 DAS);
 - 1 MA access area trip after April 1st (FT:17,000lbs)
 - ~4 million lbs for LAGC IFQ (set equal to FY2016)

Committee Tasking to PDT

Specifications Run of AAs, and a range of approaches for open areas.

RED – Potential Rotational Closure

GREEN – Potential Access

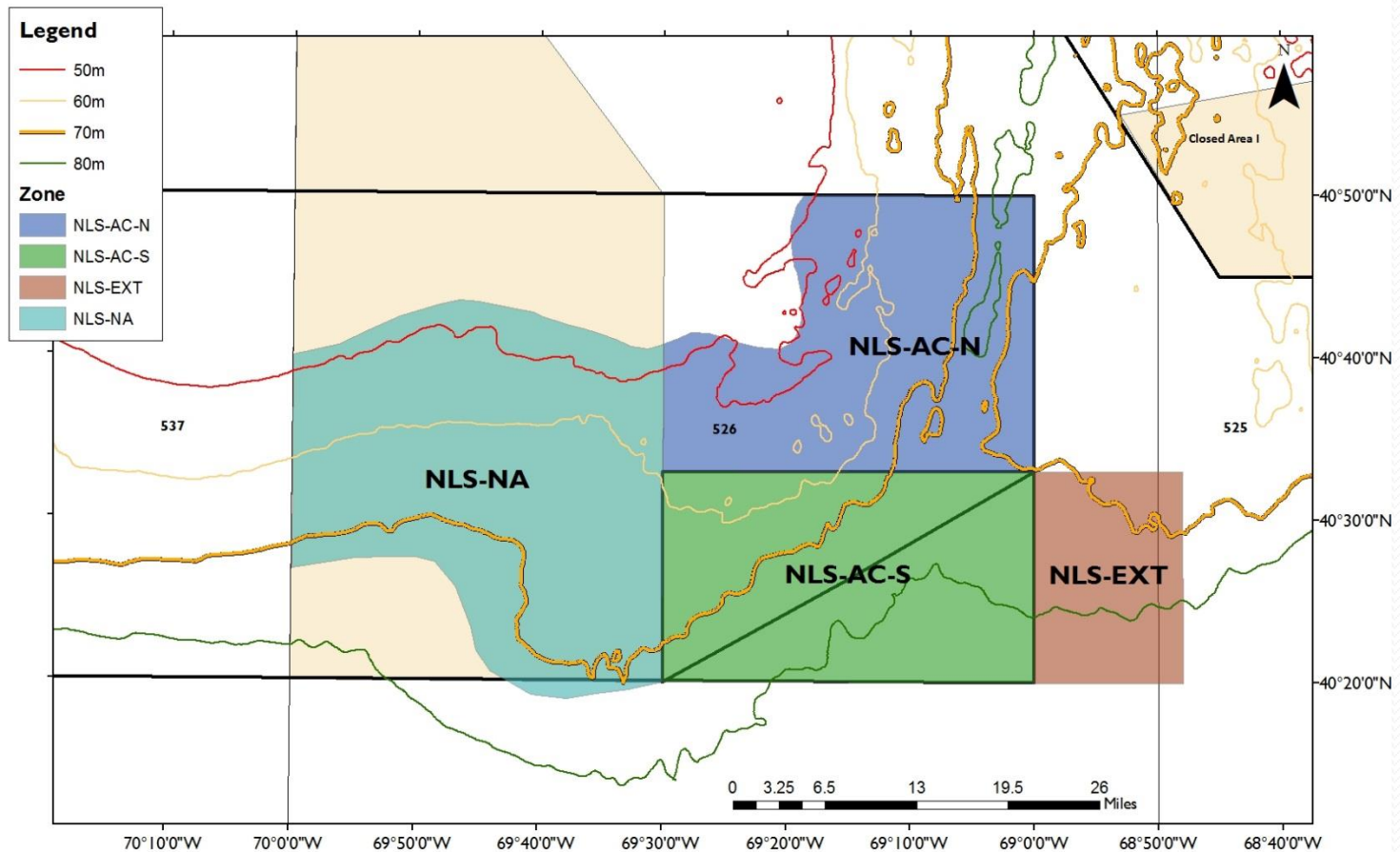


Range of open area runs: 30 DAS, Status Quo DAS, F=0.48, F=0.4

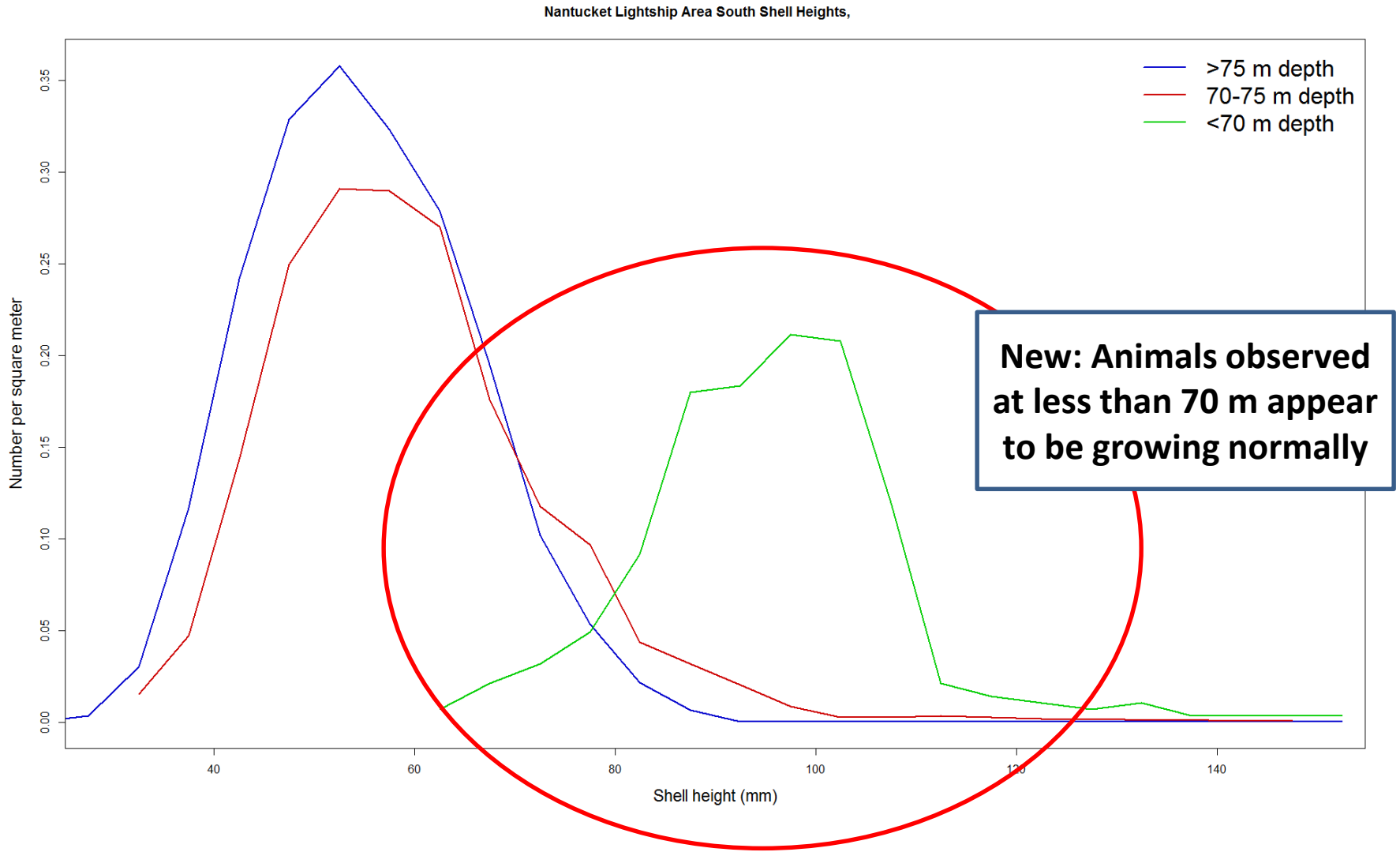
Committee Input on Specs

- **No Action – Default measures for FY2017**
- CTE Tasking: 4/5 trips, ET and CA II ext Closed
- CTE Tasking: Several DAS runs (both F & DAS)
- Looking to refine the alternatives if possible:
 - New ideas for specification run?
 - Any changes to CTE tasking on specifications?
- Need to define the “Basic Run” – consider AP motions

Nantucket Lightship



Nantucket Lightship Access Area South 2016 shell heights by depth zone, from Habcam data



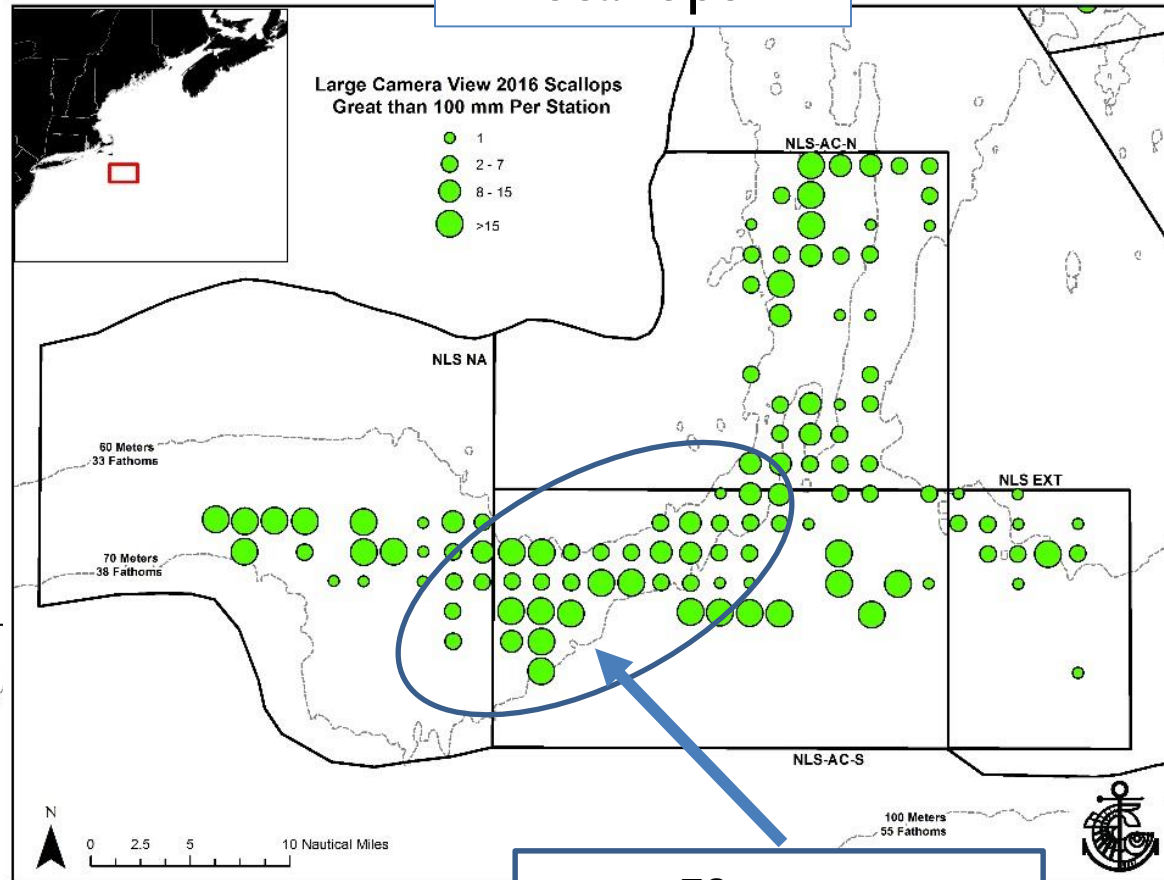
SMAST, 2016

NLS Survey

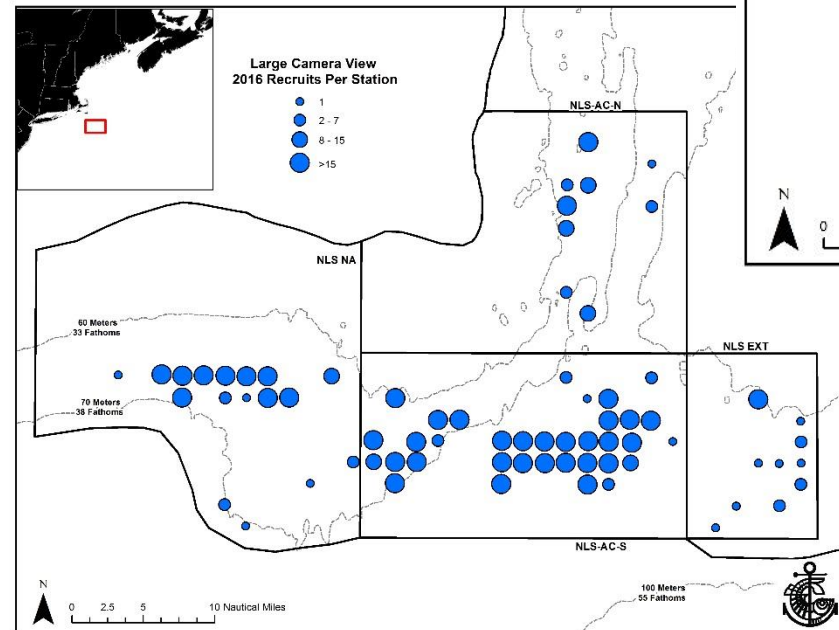
Large Camera

>100 mm
scallops

Recruits



70 meters



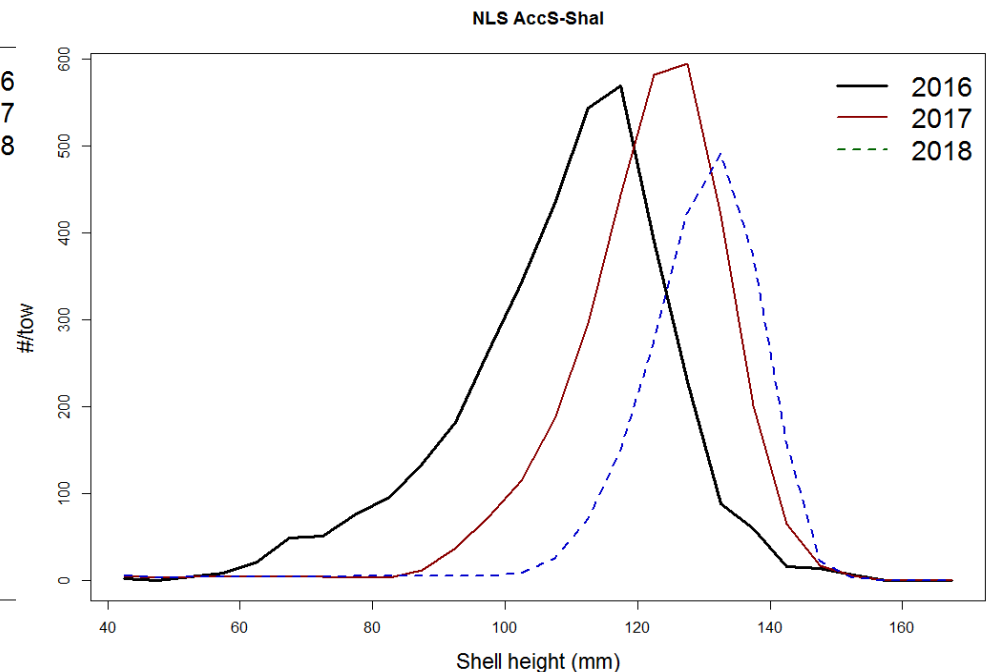
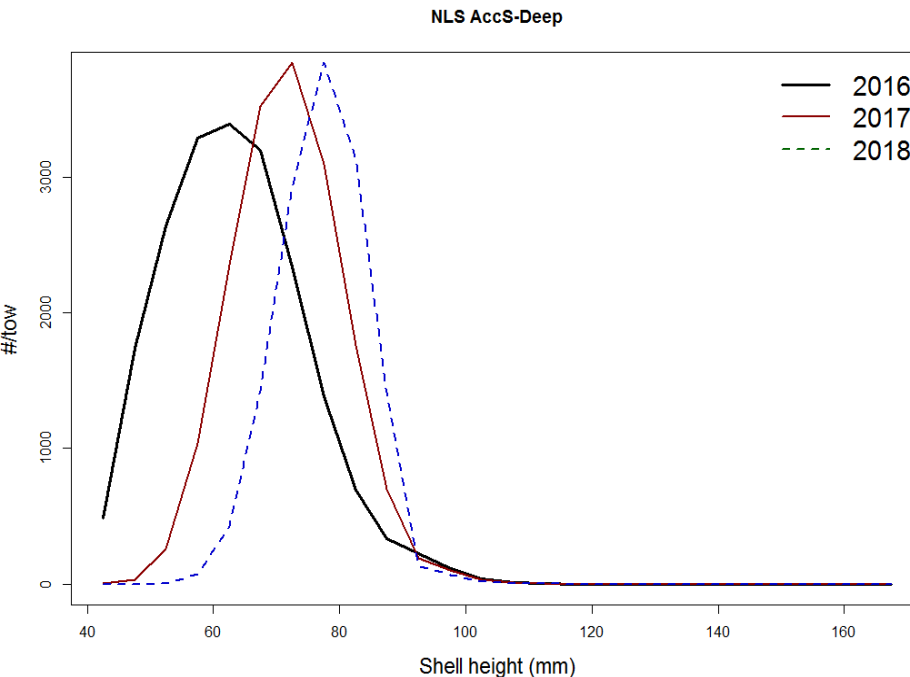
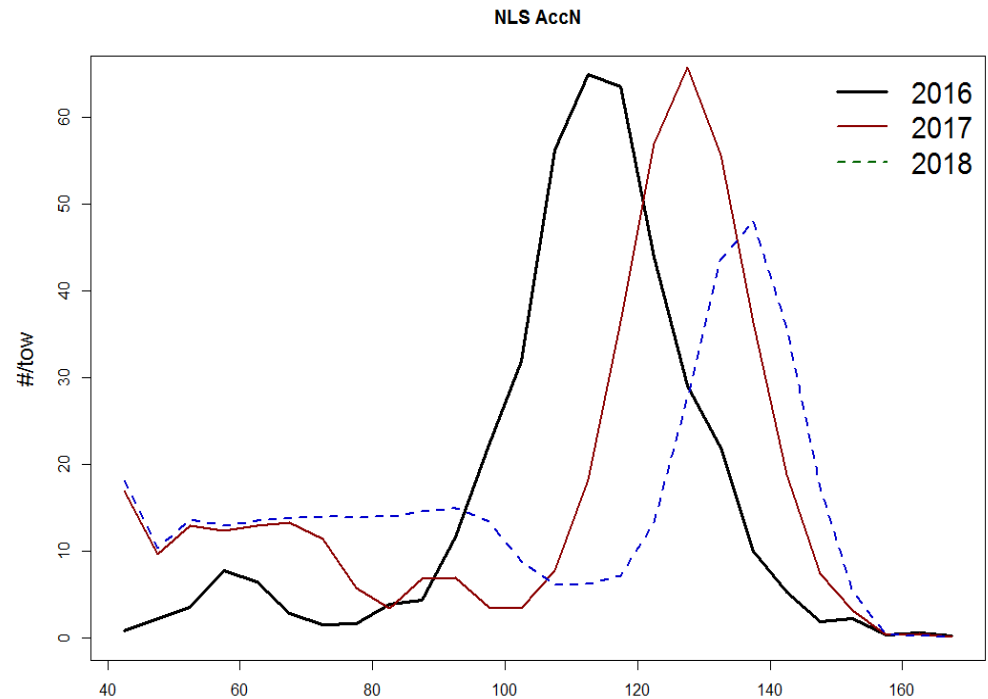
On the basis of the previous plot (and similar data from the SMAST survey), the Nantucket Lightship Access South was split by 70 m depth into shallow and deep parts. 18% of the biomass of this area is in the shallow portion

The shallow part was assumed to be growing normally and have the standard shell height to meat weight relationship.

The deep portion used the VIMS SH/MW relationship and growth parameters of $L_{\infty} = 90$ and $K = 0.4$ consistent with the observed 2015-2016 growth.

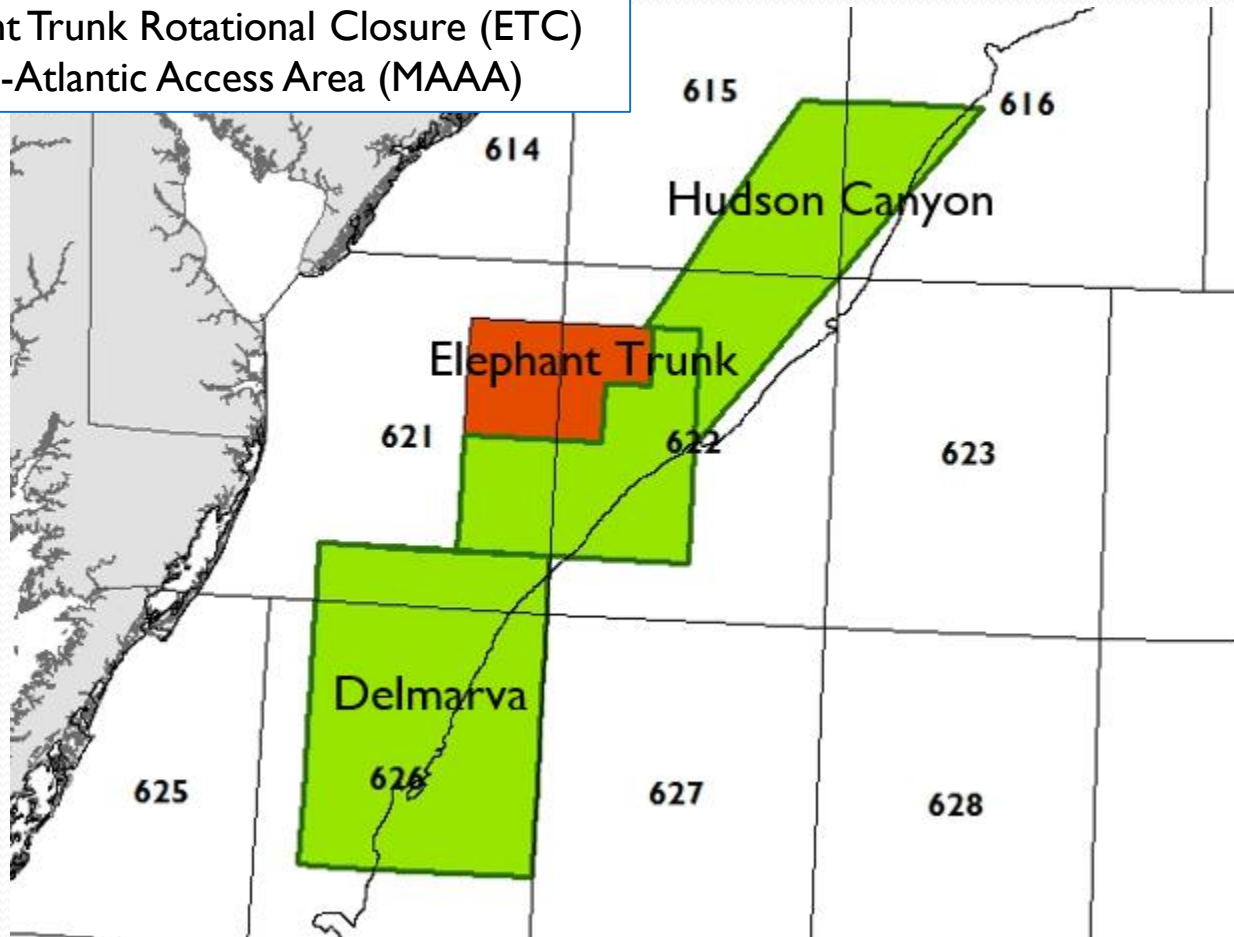
Nantucket Lightship Access Area Projections

2017 catch @ $F = 0.38$ in
Access-N and Access-S
shallow was 2960 mt



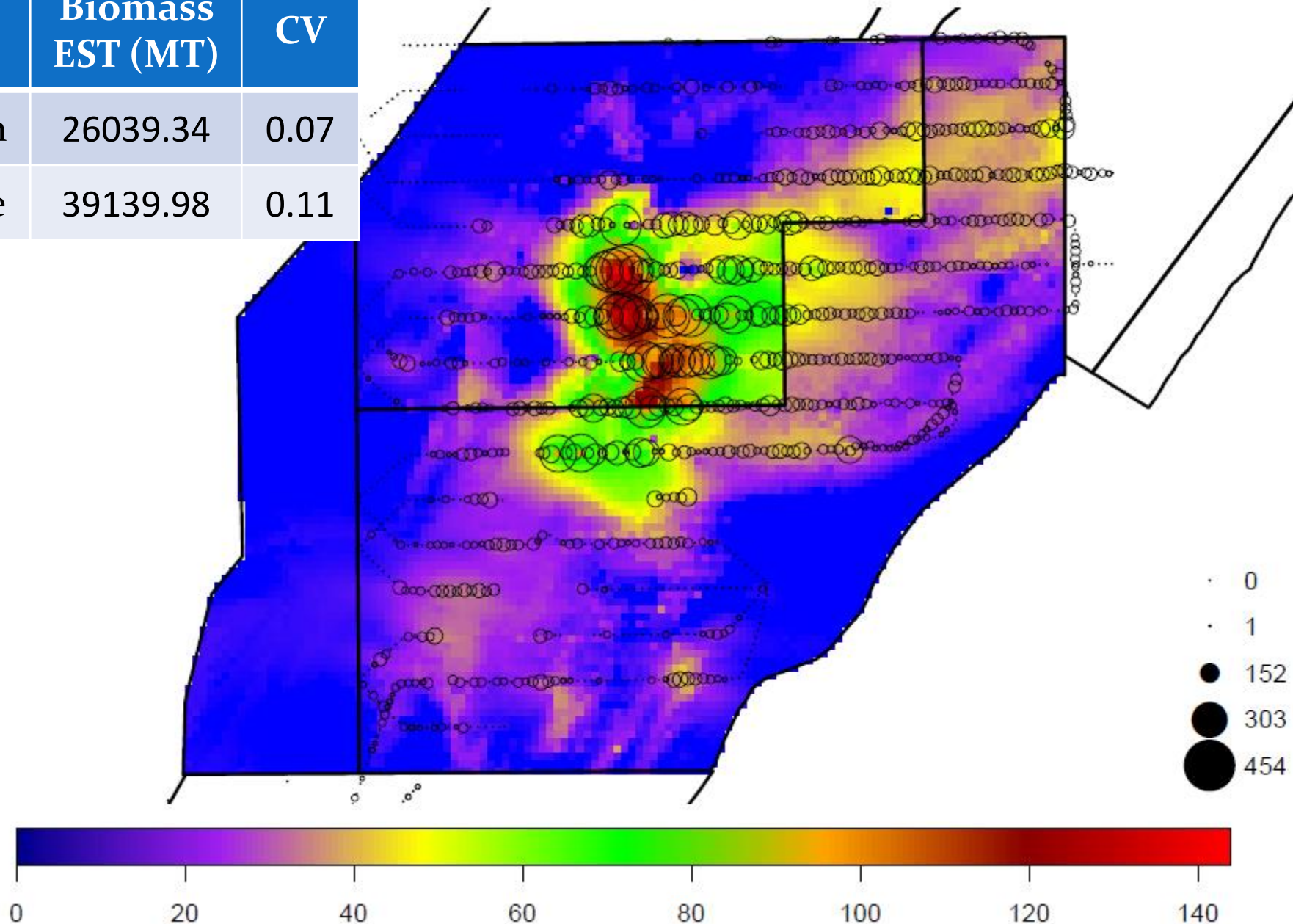
Elephant Trunk & MAAA

RED – Elephant Trunk Rotational Closure (ETC)
GREEN – Mid-Atlantic Access Area (MAAA)



Prediction Unit: mt per km2
Observation Unit: g per m2

ET	Biomass EST (MT)	CV
Open	26039.34	0.07
Close	39139.98	0.11



Projected Landings at $F=0.38$

ET Open: 3313 mt

Delmarva: 1335 mt

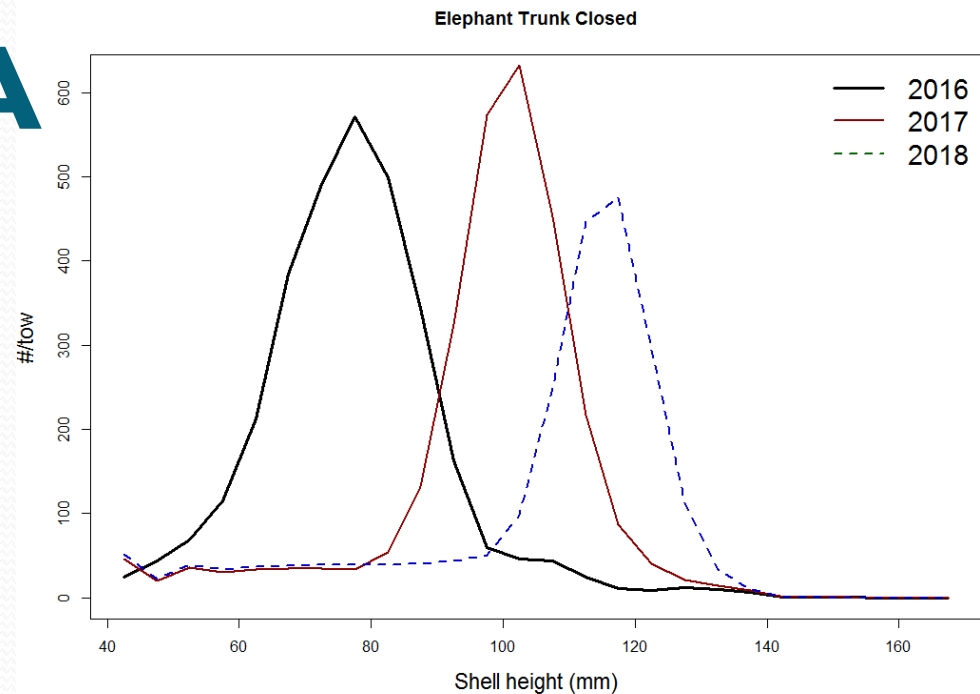
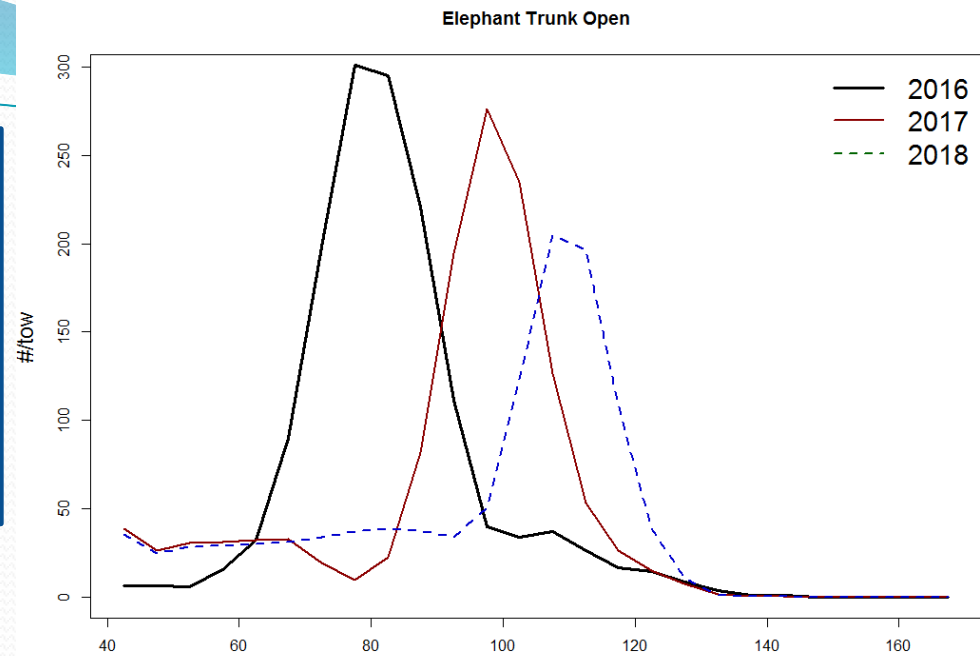
Hudson Canyon: 2469 mt

MAAA Total: 7,117

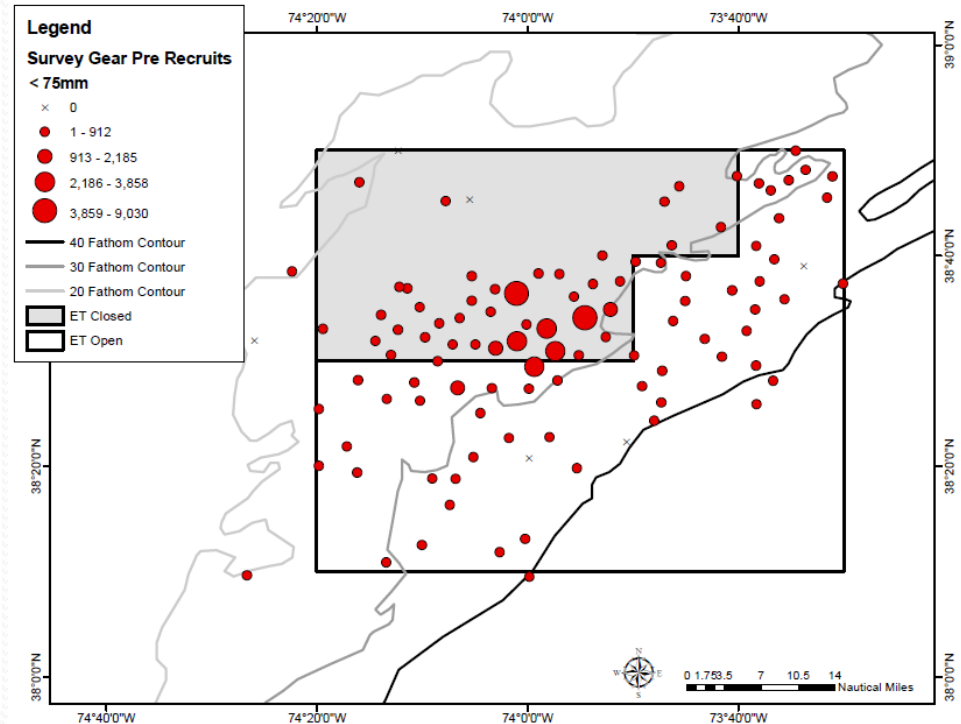
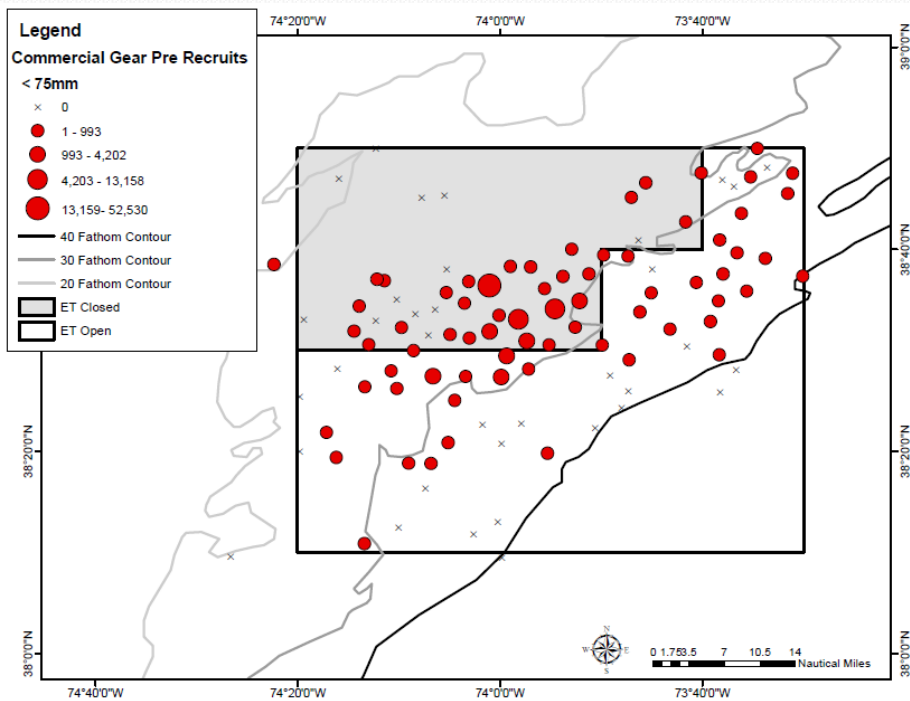
Elephant Trunk & MAAA

Projected Landings at $F=0.38$

ET Closed: 8,761 mt

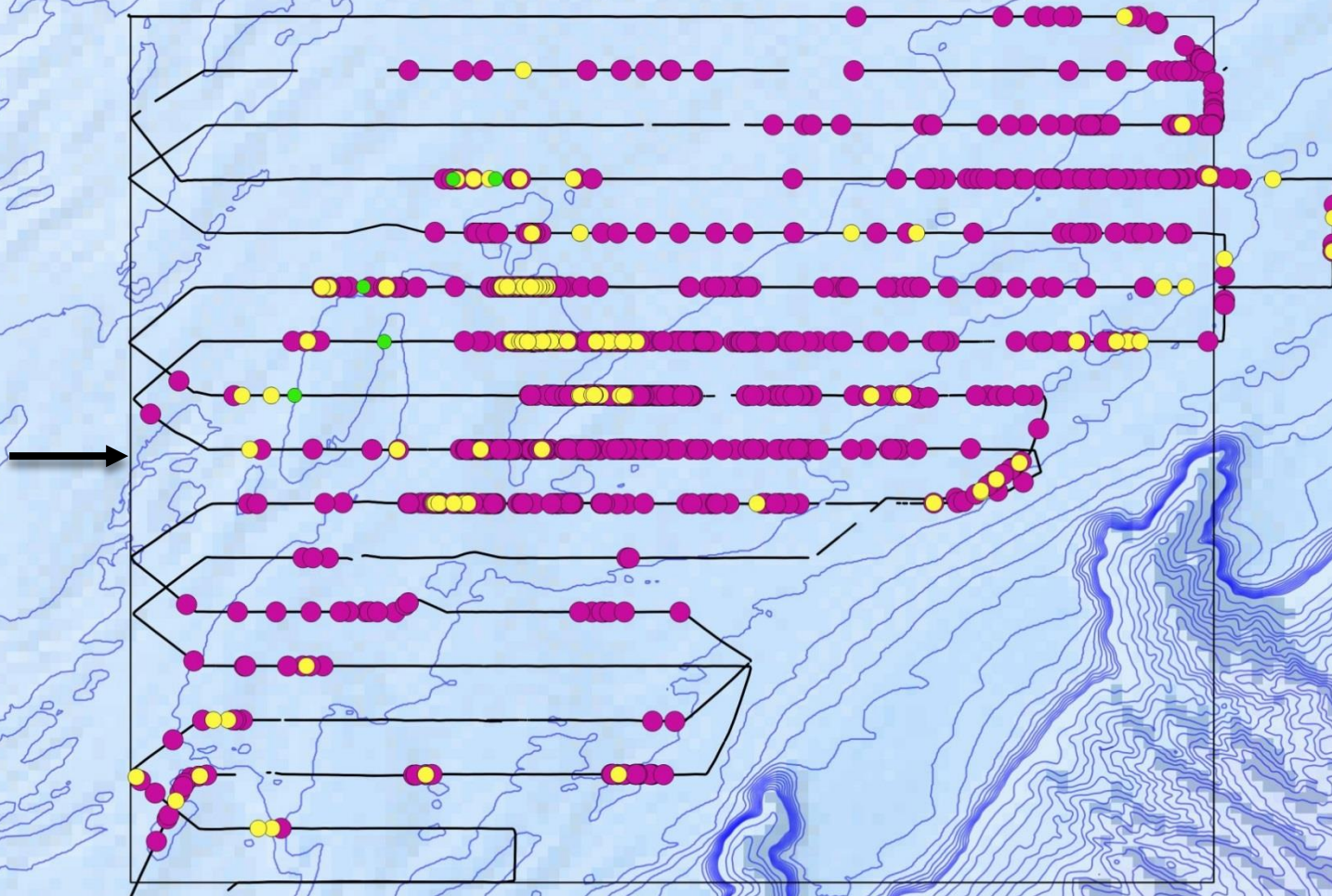


VIMS 2016 Dredge Survey – Pre-Recruits (<75 mm) in ET Open and Closed



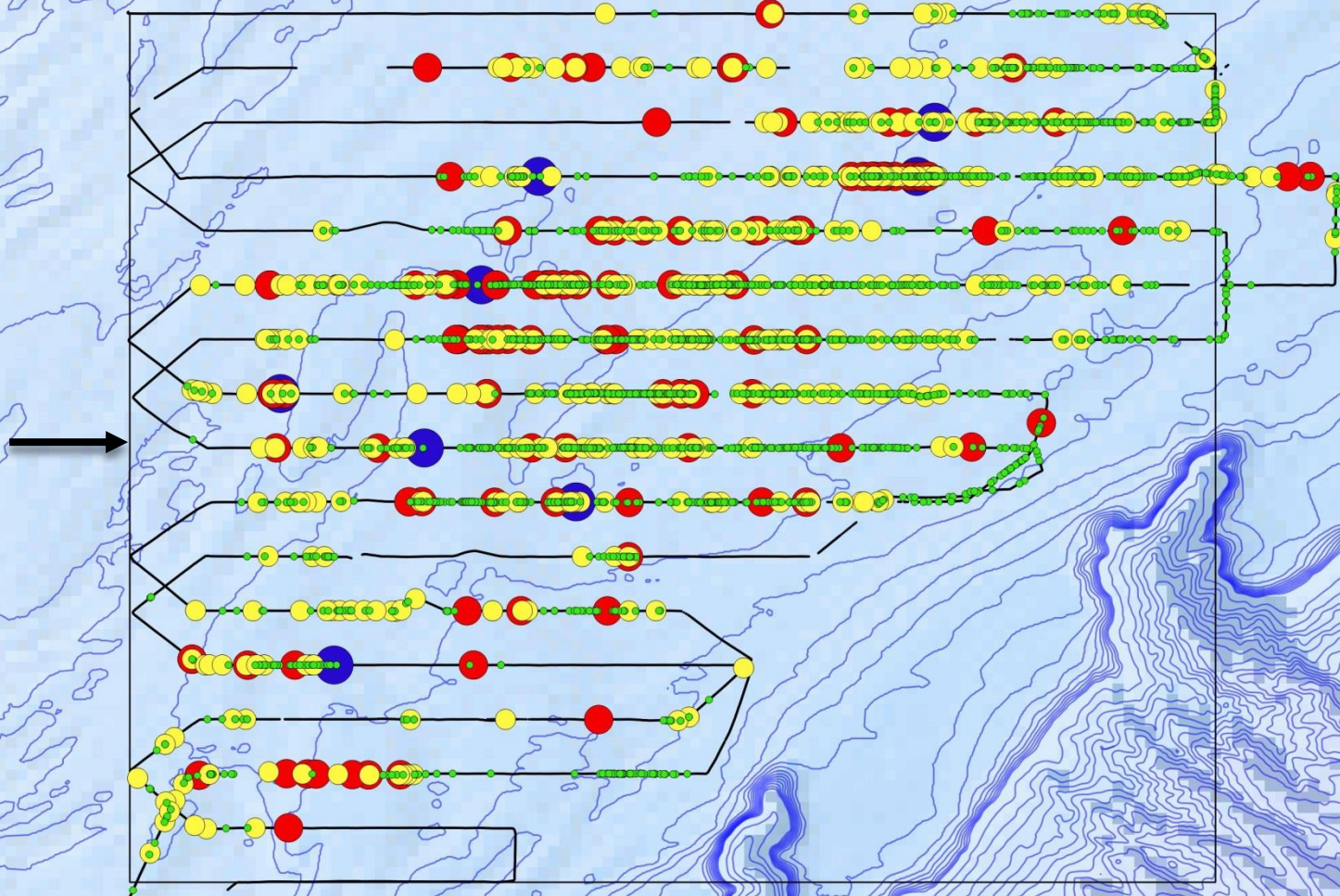
2016 Elephant Trunk - Scallop Size Distribution (mm)

- 0 - 25
- 26 - 50
- 51 - 75



2016 Elephant Trunk - Scallop Size Distribution (mm)

- 76 - 100
- 101 - 125
- 126 - 150
- 151 - 165



AP & PDT Discussion of ET Closed and MAAA

- PDT and AP support for protecting small scallops, recognition of no sign of incoming recruitment from 2016 surveys.
- Some members of the PDT strongly support keeping the ET Rotational Closures closed for another year.
 - Growth potential for animal in this area is significant.
 - Close area for 3rd year of rotational closure (the area was closed before rotational closure put in place).
- Some concern on AP that two trips in MAAA (with ET closed would lead to high grading), larger scallops worked on the last two years. Looking at 20-30 counts.
- Some PDT and AP members noted larger animals in the ET Closed, similar length frequencies between ET Open and ET closed, and relatively large projected landings for the area

New AP idea for a 'Basic Run'

September CTE Tasking

- 5 Total AA trips
 - 2 in MAAA
 - 1 in CA II S
 - 1 in NLS "North" (smaller trip limit)
 - 1 in NLS "South"
- Measures to Protect Small Scallops
 - Keep Elephant Trunk Closure Closed
 - Keep CA II Ext Closed

Proposed
Change to NLS

Doc. 11, AP Motions #3 and #4

- 4 Total AA trips @ 18,000 lbs
 - 2 in MAAA
 - 1 in CA II S
 - 1 in NLS (single area, combined North & South, NLS ext becomes open area)
- Measures to Protect Small Scallops
 - Keep Elephant Trunk Closure Closed
 - Keep CA II Ext Closed

AP Motion #2:

- 4 AA trips at 18,000 lbs a trip
 - 1 trips in MAAA (Megatron)
 - 1 trip in “Elephant Trunk Closed,” with a seasonal closure from July 1 – Sept. 30, and “MAAA flex option” (can opt to fish ETC trip in MAAA)
 - 1 trip in NLS as a single area
 - 1 trip in CA II
- Measures to Protect Small Scallops: Seasonal closure in ETC, limit on # of fishing trips into ETC, keep CA II Ext Closed.

- AP support of concept, recommended additional measures to protect small scallops.
- PDT: Some members do not support access to ETC this year (keep rotational closures in place for 3 years). ETC can support effort, but should be a separate area if opened.

AP Motion #5:

- 5 AA trips at 15,000 lbs a trip
 - 2 trips in MAAA (Megatron)
 - 1 trip in “Elephant Trunk Closed,” with a seasonal closure from July 1 – Sept. 30, and “MAAA flex option”
 - 1 trip in NLS as a single area
 - 1 trip in CA II
 - Measures to Protect Small Scallops: Seasonal closure in ETC, keep CA II Ext Closed.
 - Puts most lbs into rotation (75,000), majority in the MAAA.
- AP support of concept, concern expressed about impact of reduced trip limits on southern vessels (steam time - NC,VA).
 - PDT: Concern that this would add more effort into the MAAA, particularly with the ability to “flex” a ET Closed trip into the MAAA.

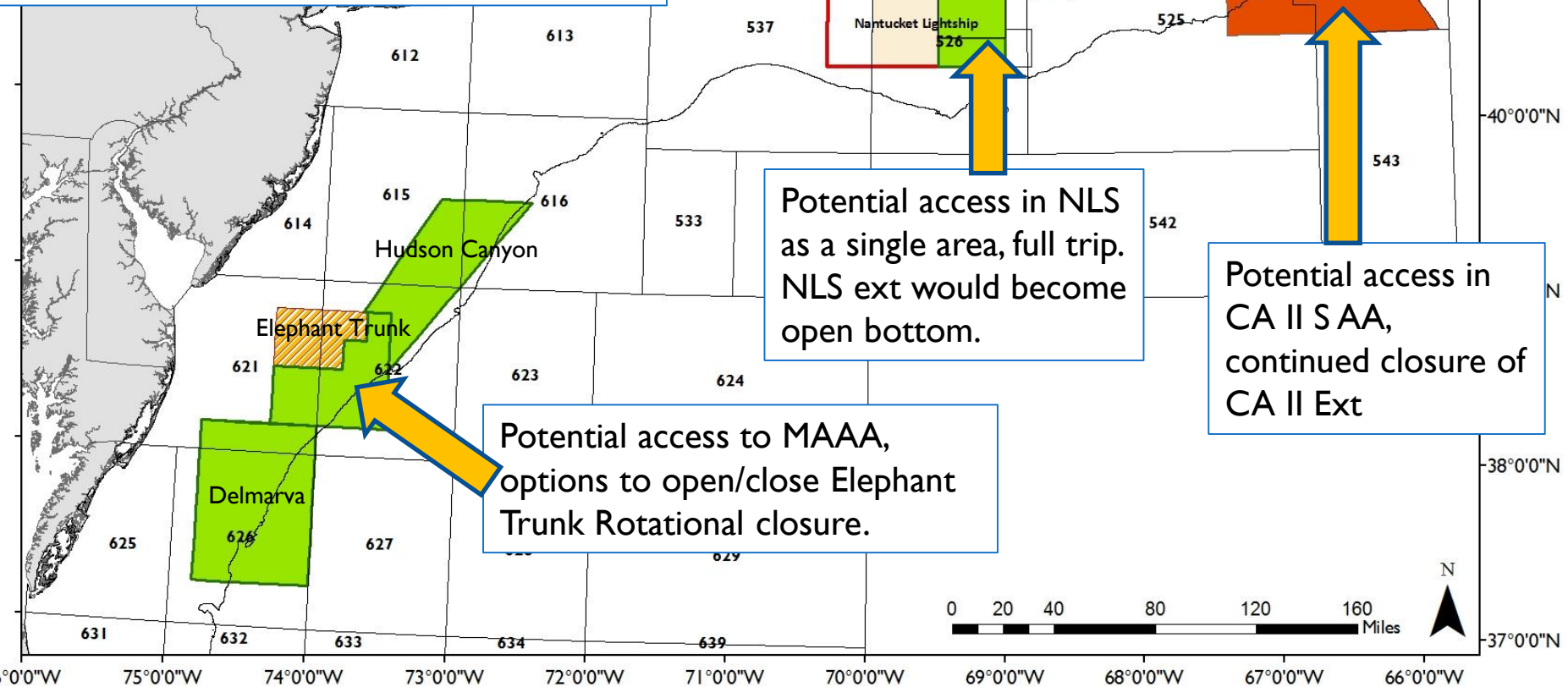
AP ideas from Oct. 13

Specifications Run of AAs, and a range of approaches for open areas.

RED – Potential Rotational Closure

GREEN – Potential Access in “Base Run”

ORANGE – Potential Access in some options



Range of open area runs: 30 DAS, Status Quo DAS, $F=0.48$, $F=0.4$

RSA Compensation Fishing

- Restrictions on RSA compensation fishing in FY2017
 - NGOM Management Area
 - Nantucket Lightship Access Area “North”
 - CA I
 - CA II (yellowtail)
- This leaves the following areas available for compensation fishing:
 - NLS S
 - MAAA
 - Open Area

Changes to these recommendations?
Clarify rationale for each.

Timing of Openings and Closures

- MAAA (“Megatron”) – Default specs opening is April 1
 - Nantucket Lightship – Doc. 10, CCCFA data on improving market grades in June (>U12).
 - CA II – Yellowtail Bycatch Closure: Aug. 15 – Nov. 15
- Looking for input on any timing changes
 - AP: ETC seasonal closure if opened, intended to reduce mortality of small scallops

Allocations of AA trips

Looking for general input on the range of concepts to consider.
We will revisit this in November with numbers of trips.

- LA: Preference for lottery or equal trips?
 - Enough exploitable biomass to support full trip for all FT LA, do not need a lottery this year.
- LAGC IFQ: Range of AA allocations? (*Continue in Nov.*)
 - Initial discussion on range to include in FW28.
 - FW27 included:
 - Same AA Proportion as LA (Preferred in FW27)
 - 5.5% of the LAGC IFQ allocation
 - AP Motion #6: LAGC IFQ AA lbs from CA II be split between the NLS (1/3) and the MAAA (2/3).
 - Vote: 6/4. Additional factor is spatial management alternative.

Committee Tasking from Sept.

Closed Area I Carryover Options

- Not currently considering CA I Access in FW28 (waiting on OHA2)
- ~1.6 million carryover CA I lbs
- Issue addressed in FW25
- Option for allocating to over areas:
 - Assign to other AAs (consider restrictions on RSA comp fishing)
 - Assign to open area as either pounds or DAS (using LPUE conversion)
- Multiple ways to allocate:
 - Between LA ACT and ACL, no impact on Projected Landings, increased F
 - Subtract from Projected Landings
- PDT recommends waiting for CA I to reopen, biomass is currently exploitable
- AP agrees with PDT, Vote: 9-0-1.

# of Vessels	Under-harvested (lb)
129	0-100
22	101-200
11	201-300
9	301-400
9	401-500
7	501-600
5	601-700
7	701-800
4	801-900
7	1000-2000
6	2001-4000
5	4001-6000
4	8000-10000
8	10001-15000
10	16000-19000
5	25000-35000
4	35001-36000

Northern Gulf of Maine TAC Development

- Approach based on FY2016 landings data and the NGOM Survey
 - (Ratio of GC landings/LA landings) x (NGOM biomass estimate)
- TAC Options
 1. Status Quo: 70,000 lbs
 2. Sub-Option 1: 80,663 lbs
 3. Sub-Option 2: 94,634 lbs
 4. Sub-Option 3: 103,338 lbs
 5. Sub-Option 4: 110,608 lbs
- Correspondence: Several permit holders suggesting 100,000 lb TAC
- Overages in FY2015 and FY2016 (~20k lb combined overage)
 - AM is a pound for pound payback
- FY2017 TAC range **after payback**: ~50,000 lbs to ~90,000 lbs

PDT Recommendation:
Refine number of options (3),
Round to even numbers
70k, 95k, 110k pounds

AP Recommendation:
95k pound TAC

FW28 Management Measures



Framework 28 – Mgmt. Measures

- Prohibition on the possession of shell stock inshore of DAS monitoring line, north of 42 20 N.
- ACL Flowchart Measures
 - Applying spatial management to the specification setting process
 - LAGC IFQ allocation of 5.5% - ACL vs. Projected Landings
 - “Ceiling” concept moved to Considered but Rejected.
 - AP and CTE support for this option.
 - LAGC IFQ Management Uncertainty Buffer
 - Moved to Considered and Rejected.
- Modification to Closed Area I Access Area Boundary
 - *Contingent on OHA2 final rule, but still moving forward.*
 - Two options under consideration.
 - AP and Committee Supported Option 2 (add entire CA I N HMA)



What's next?

- Scallop Committee – October 17 (*Today*)
- SSC Meeting on October 18 to recommend OFL and ABC
- *PDT call – End of this week, early next week*
- AP and Cmte review and select preferred alternative – November 2 and 3
- Final Council Action – Nov. 15-17, Newport, Rhode Island
- FW28 implementation in April 2016

Information Presented to PDT/AP

- Industry based electronic data collection system:
 - Support real-time or near real-time management, eVTR compliant, potentially funded through set-aside
- Observer Bias:
 - Hypothesis: Fishing behavior (trip length and landings) varies between observed and unobserved LAGC IFQ trips because vessels are only eligible for a single day of compensation.
 - Implication: Observer data is not representative of the larger fishery.
- No AP motion on these, or PDT consensus.

2017 Priorities

- Doc. #9. All priorities are “single year” vs multi-year.
- Multiple ‘vehicles’ to use:
 - Specifications Package, Framework, Amendment
- 11 potential work items on the list for 2017.
 - There is not enough PDT capacity or Committee time to complete everything on this list next year.
- Regulatory requirements for next year:
 - Specifications
 - AM for northern windowpane (if sub-ACL created this year through groundfish FW 56)
 - *Modifications to AA boundaries, consistent with OHA2 final rule.*
 - *Ongoing staff work (support RSA program, 5-year IFQ review)*



Additional Information

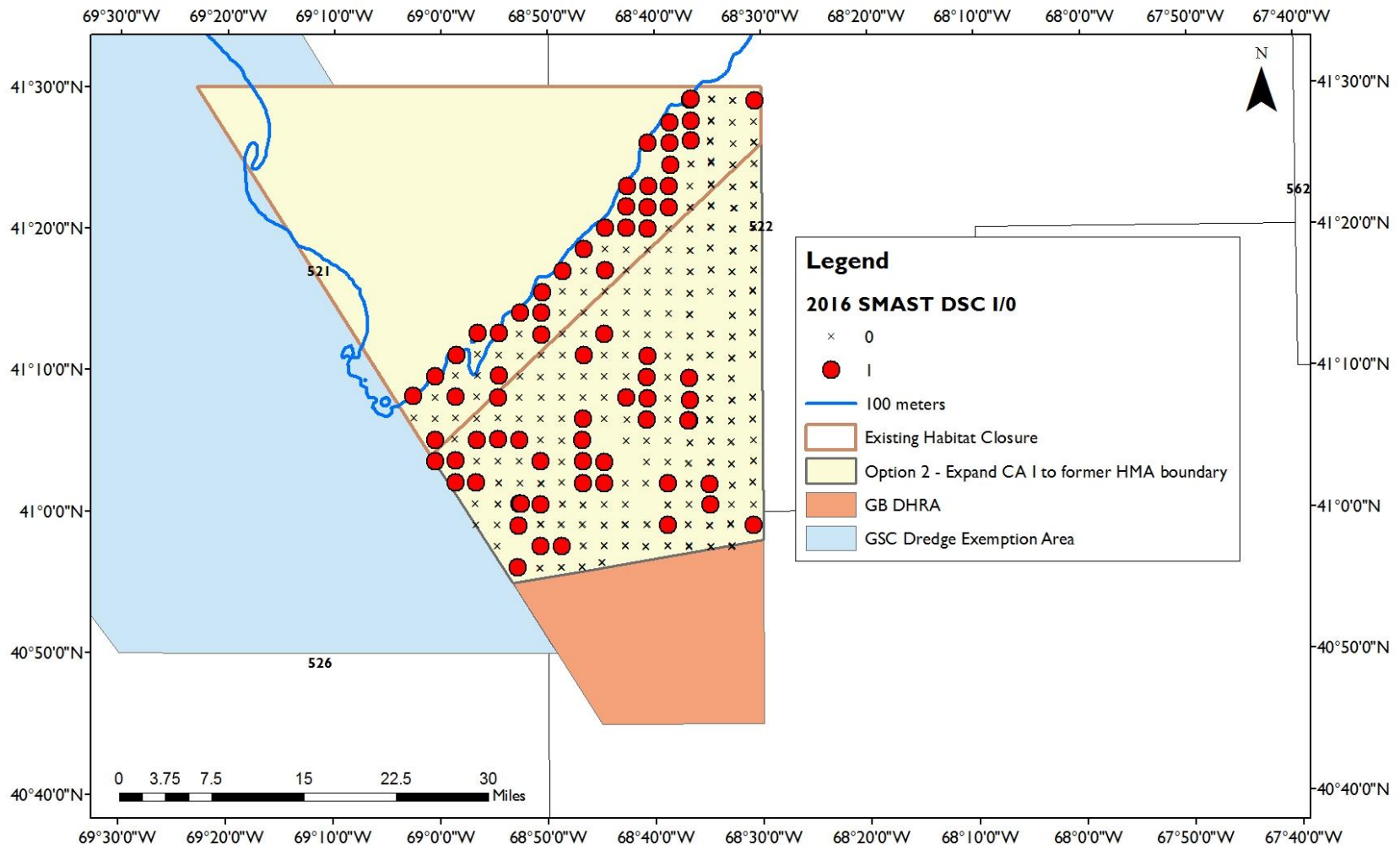
Legend

2016 SMAST DSC I/O

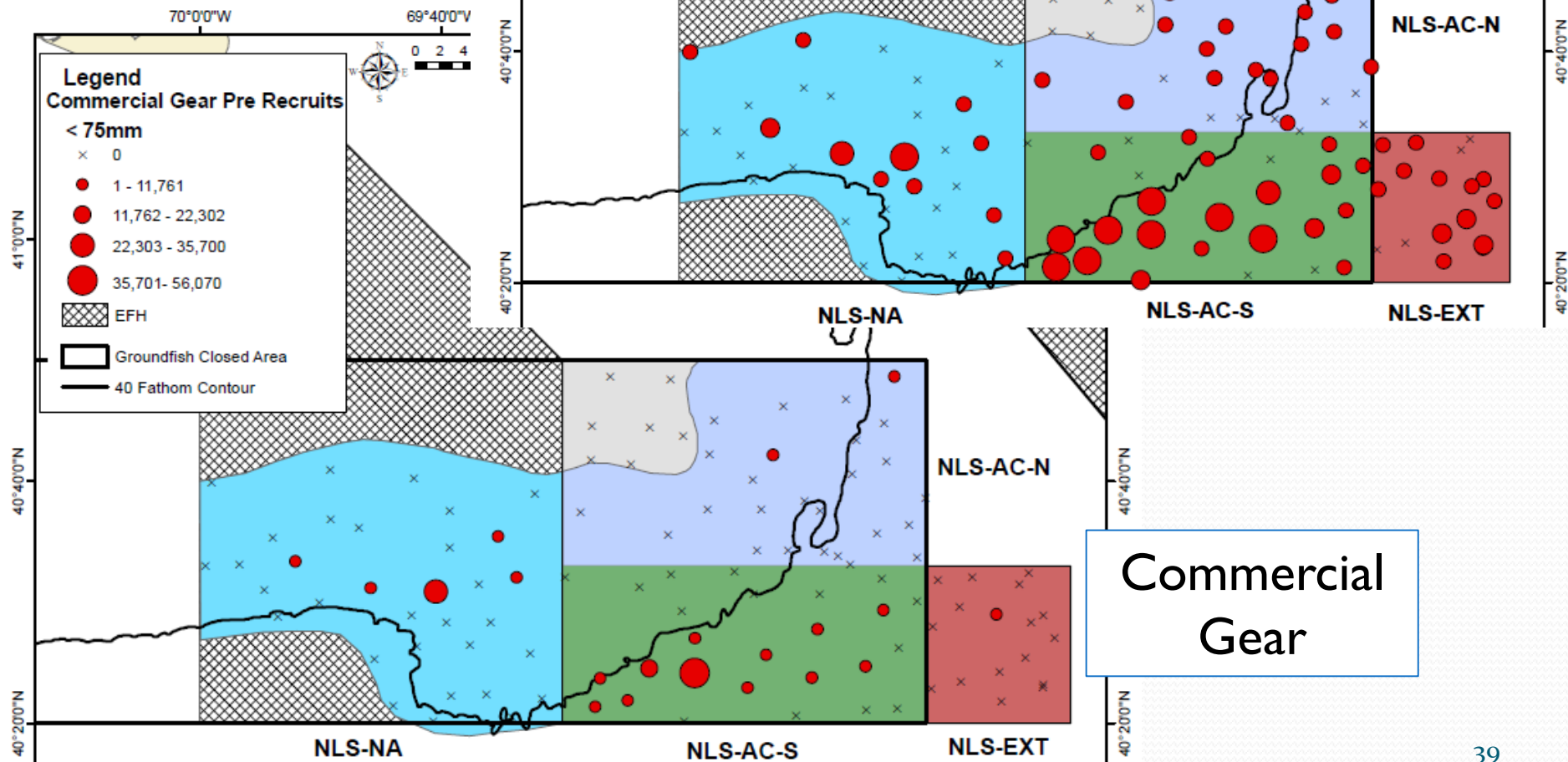
- x 0
- 1
- 100 meters
- Existing Habitat Closure
- Option 1 - Include "Sliver" in CAI Boundary
- "Open Area" Option 1
- GB DHRA
- GSC Dredge Exemption Area

CAI Boundary

Option 2, expand CA I AA to former HMA

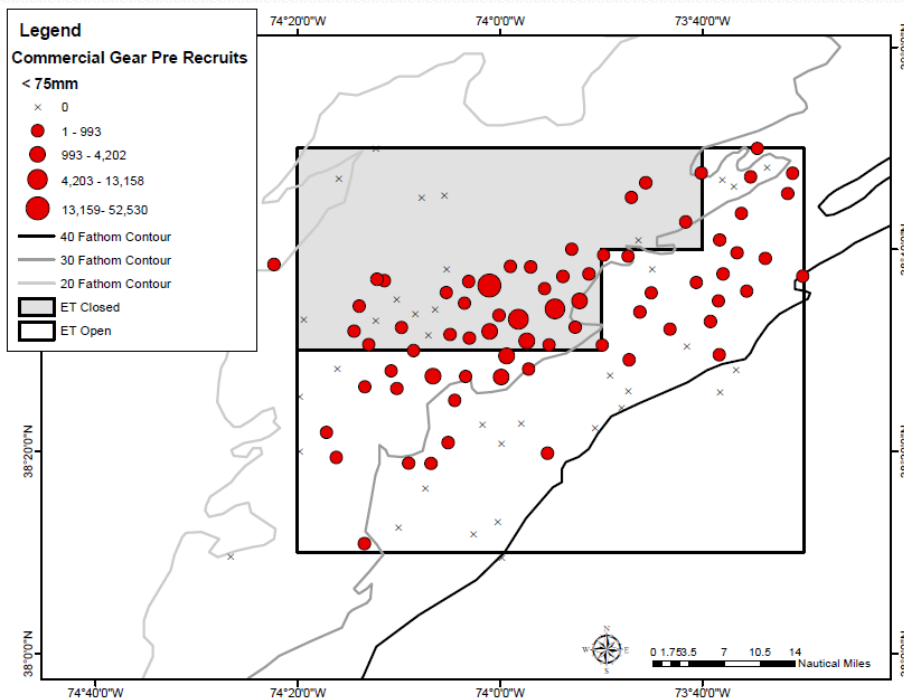


VIMS – NLS Pre-Recruits

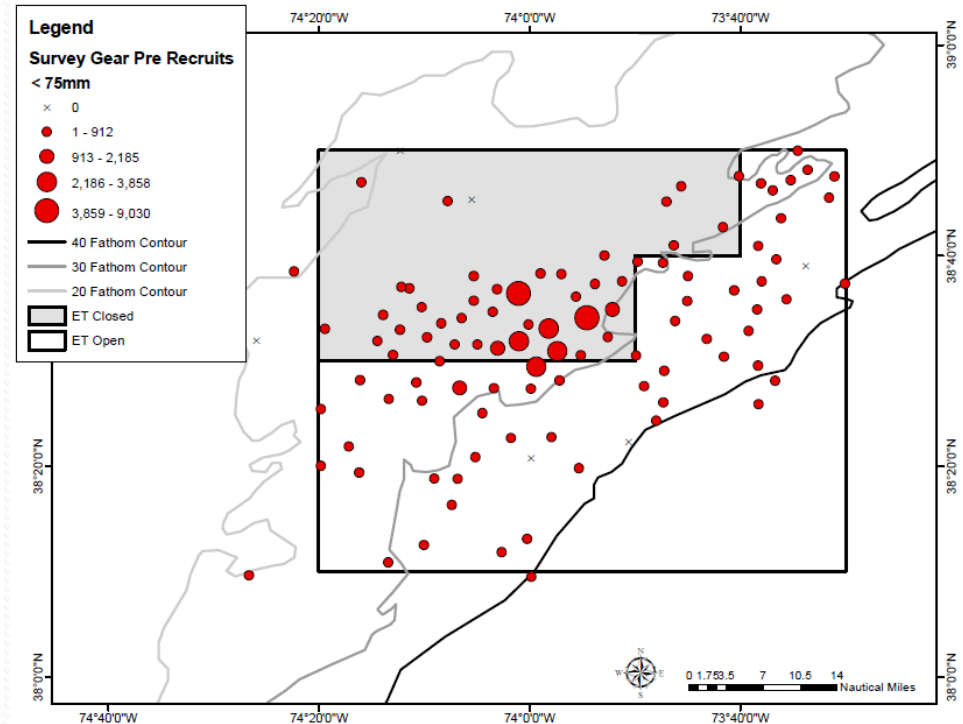


VIMS – ET – Pre-Recruits (<75 mm)

Commercial Gear



Survey Gear



Elephant Trunk – Arnie's Fisheries HabCam survey 2016

SH (mm)	Frequency
0-15	1
16-30	6
31-45	93
46-60	1273
61-75	4097
76-90	4038
91-105	1195
106-120	359
121-135	173
136-150	38
151-165	8
Total	11,281

