

# Omnibus Essential Fish Habitat Amendment 2

**Final Action**

**Michelle Bachman, NEFMC Staff,  
Habitat PDT Chair**

**NEFMC Meeting  
April 23-24, 2015**



New England  
Fishery Management Council



# Purpose of meeting

- Take final action on Omnibus EFH Amendment 2
  - Select final preferred alternatives in all categories
  - Submit the action to the National Marine Fisheries Service for approval



# Materials (Tab 7)

*Note – some other letters sent after the deadline were distributed separately by the authors*

1. DEIS (available electronically, hard copies of Volume 3, Section 2)
2. **Decision document (April 16) – Motions here**
3. Meeting summaries (February-April)
4. Memo from Scallop PDT (April 9)
5. Memo from Habitat PDT (April 8)
6. Memo from Tom Nies – Northern Edge HAPC (April 7)
7. Public hearing summaries (available electronically)
8. Written comments on DEIS (available electronically)
9. Comments summary report (February 18)
10. Correspondence received between January 9 and April 7
11. Additional correspondence received for the Council meeting
12. Memo from Tom Nies – Additional staff analysis (April 17)



# Order of discussion

## April 22

1. EFH and HAPC designations
2. Eastern GOM habitat
3. Central GOM habitat
4. Western GOM habitat
5. GOM spawning

## April 23

1. Dedicated Habitat Research Areas
2. Georges Bank Habitat
3. Great South Channel/Southern New England habitat
4. Georges Bank/Great South Channel spawning



# Preferred alternatives

- Committee – March and April 2015
- Advisory Panel – March 2015
- Council – February 2014
- Public comments report indicates level of support for various alternatives, and summarizes arguments for and against



# Essential Fish Habitat designations

- Committee recommended the following updates:
  - Winter flounder: southern limit of designation at 39° 22' N latitude (Absecon Bay, NJ)
  - Sea scallops: trim mapped areas by 110 meters and update the text description
  - Juvenile cod: remove minimum mapped depth
  - Herring eggs: add EFH areas based on abundance of small larvae



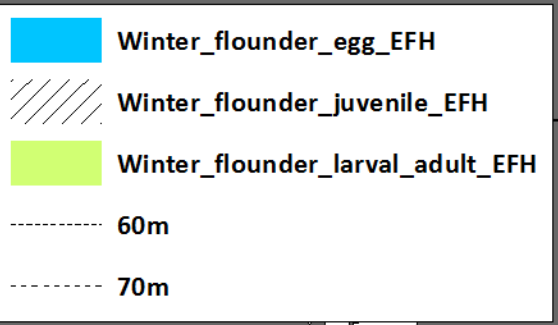
77°W

76°W

75°W

74°W

73°W

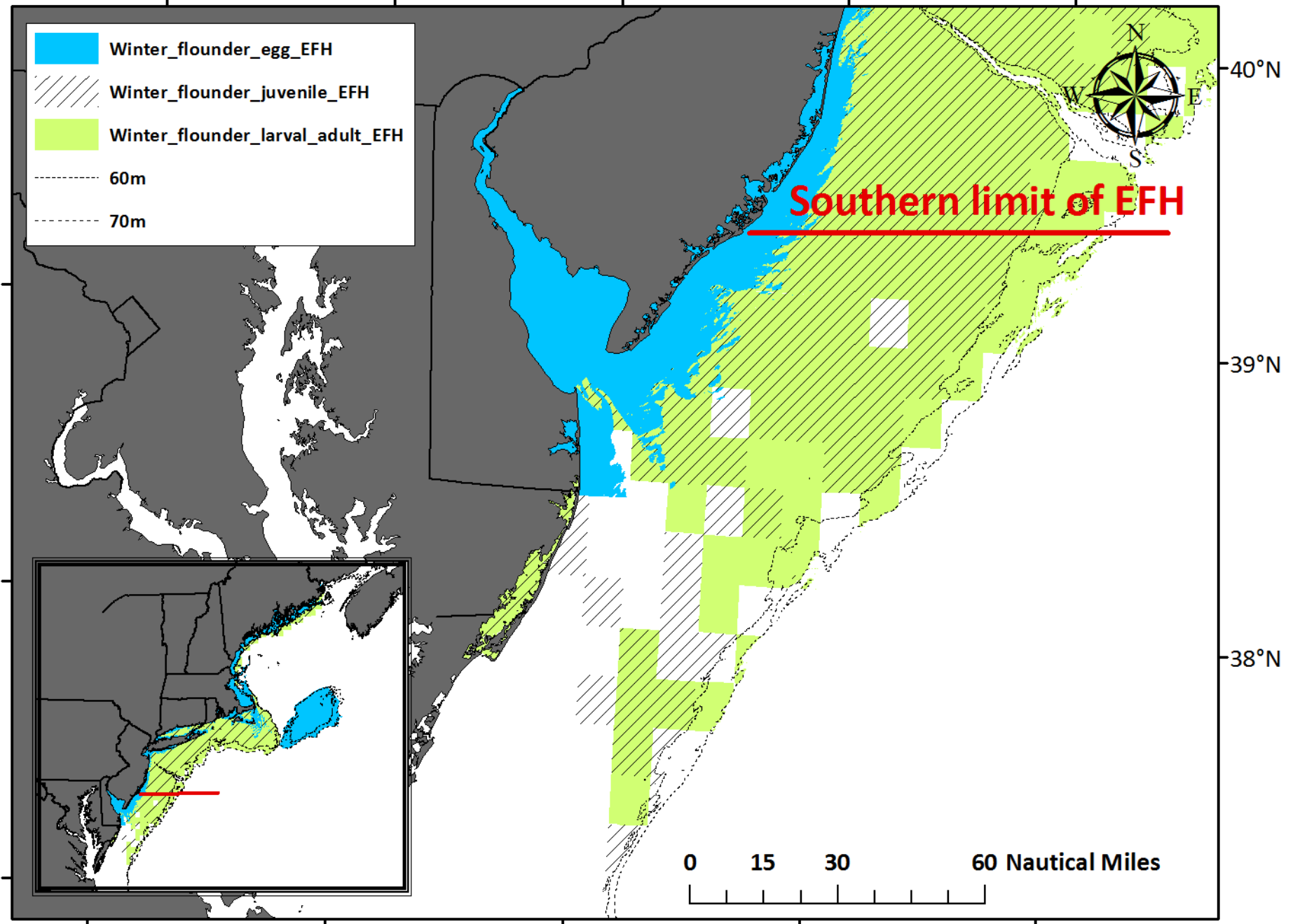
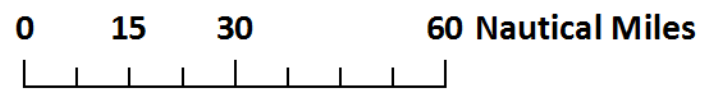
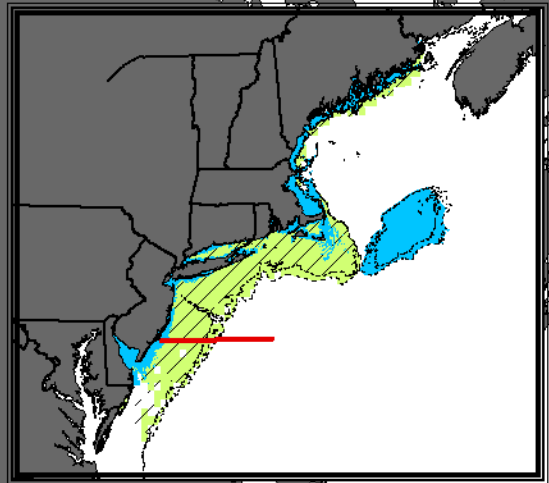


**Southern limit of EFH**


40°N

39°N

38°N



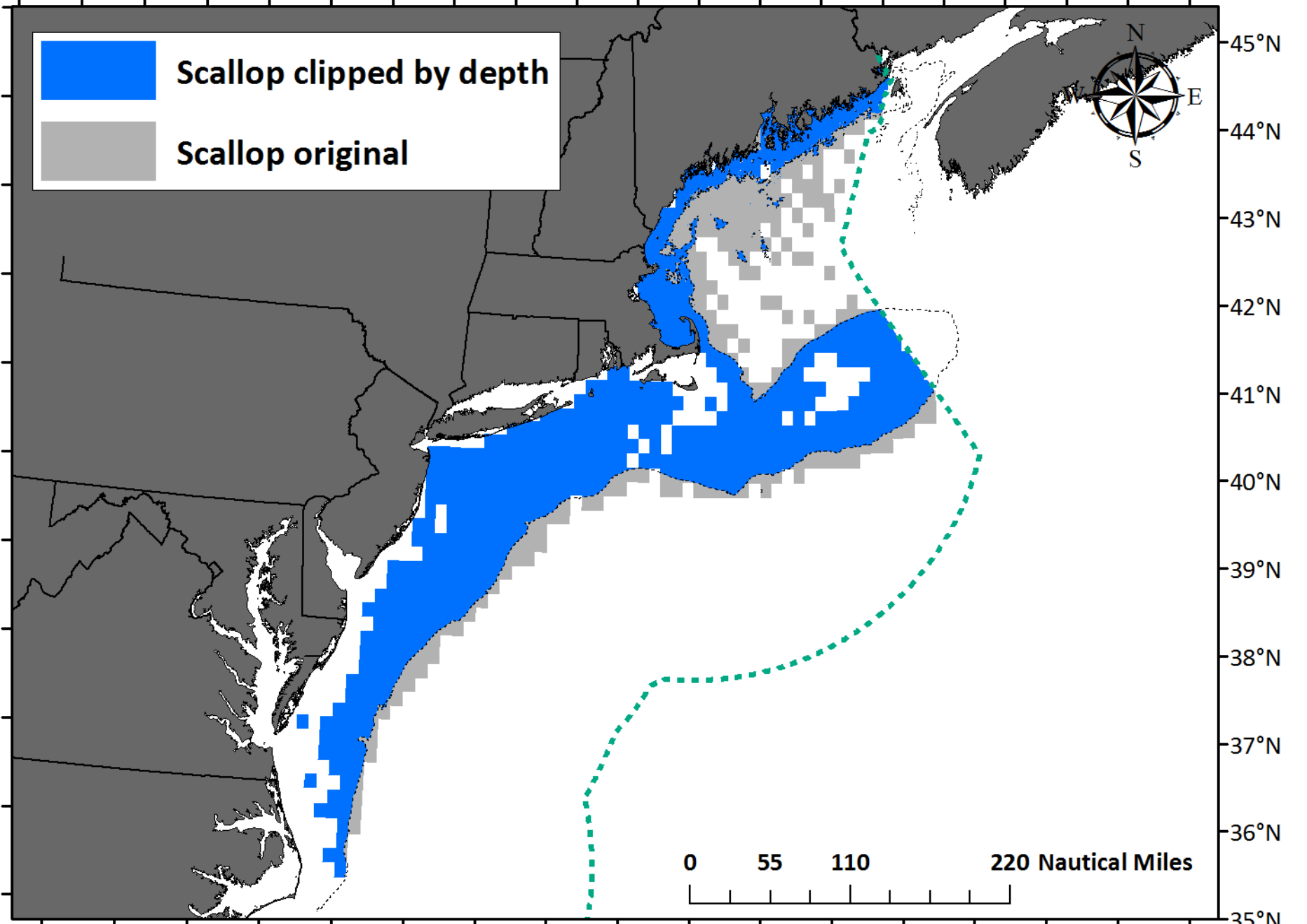
80°W 78°W 76°W 74°W 72°W 70°W 68°W 66°W 64°W 62°W

 **Scallop clipped by depth**

 **Scallop original**



45°N  
44°N  
43°N  
42°N  
41°N  
40°N  
39°N  
38°N  
37°N  
36°N  
35°N



0 55 110 220 Nautical Miles



79°W 78°W 77°W 76°W 75°W 74°W 73°W 72°W 71°W 70°W 69°W 68°W 67°W 66°W



**Juvenile Cod EFH**



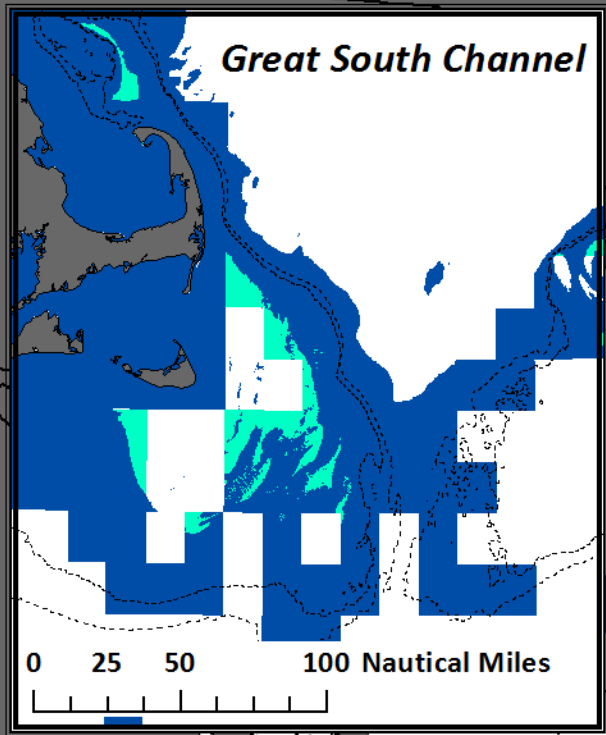
**Newly added areas < 30 m**



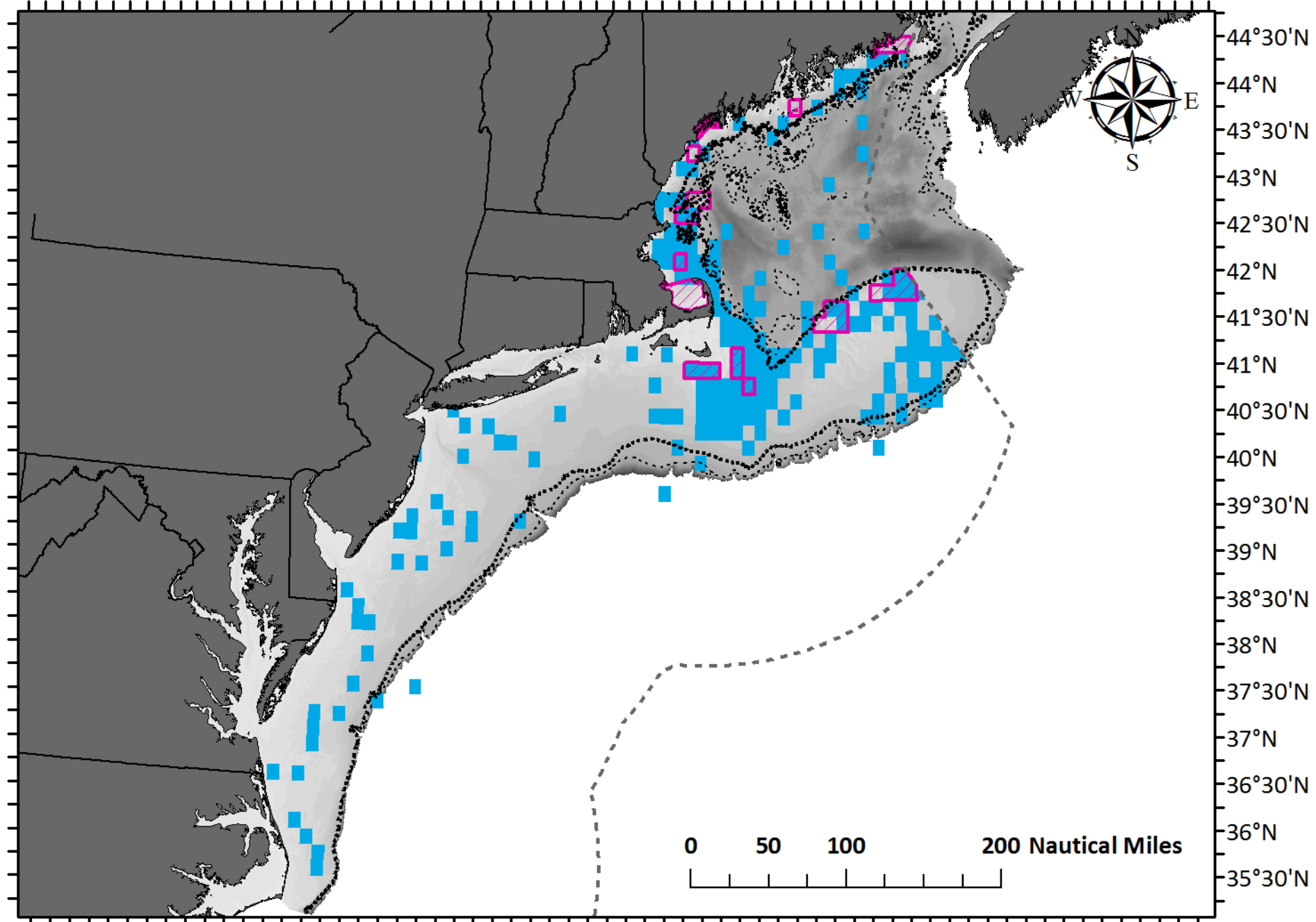
**120m**



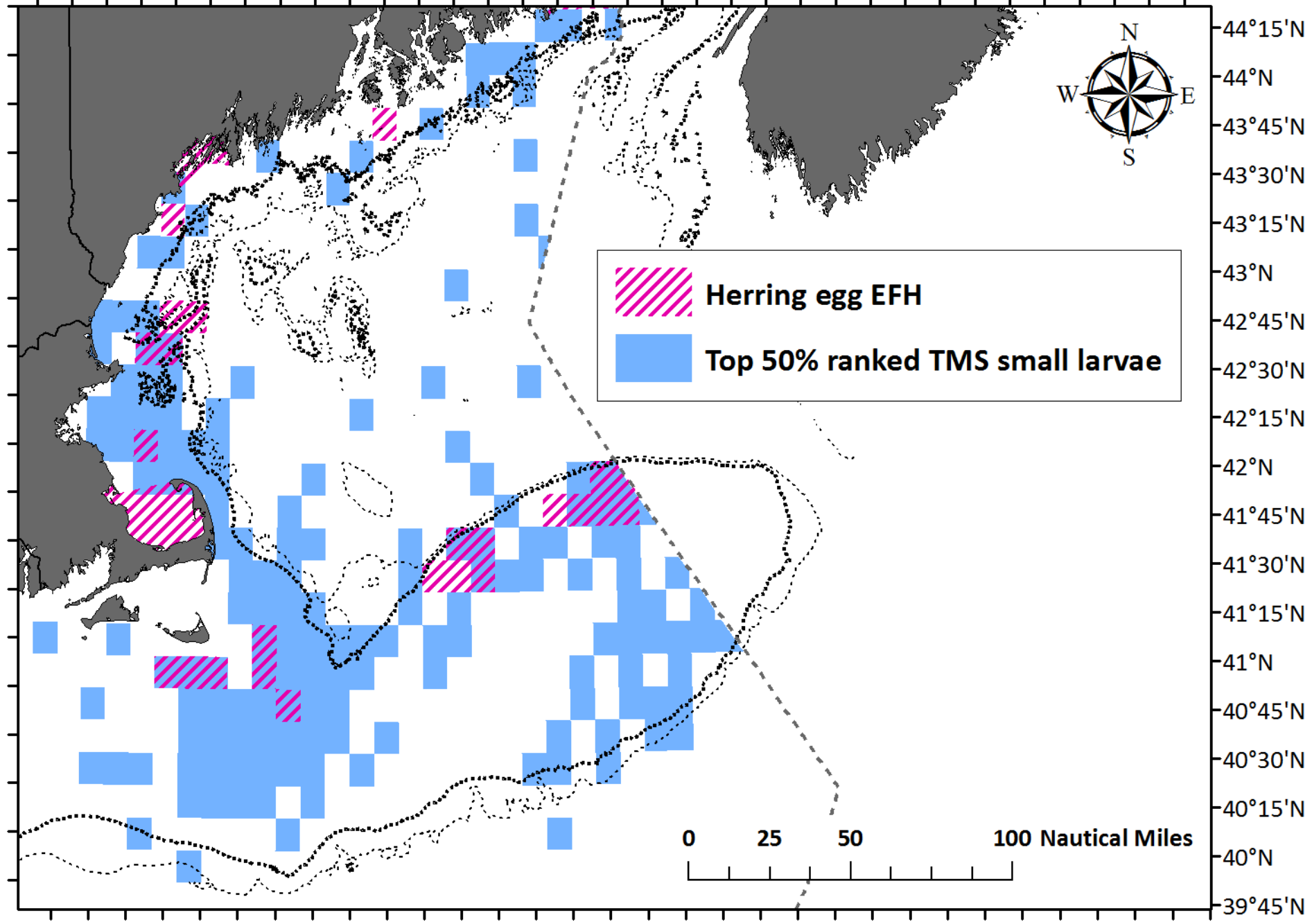
45°N  
44°N  
43°N  
42°N  
41°N  
40°N  
39°N  
38°N



80°15'W 79°W 77°30'W 76°W 74°30'W 73°W 71°30'W 70°W 68°30'W 67°W 65°30'W 64°W 62°30'W

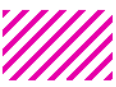


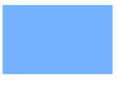
71°15'W 70°30'W 69°45'W 69°W 68°15'W 67°30'W 66°45'W 66°W 65°15'W 64°30'W 63°45'W 63°W



44°15'N  
44°N  
43°45'N  
43°30'N  
43°15'N  
43°N  
42°45'N  
42°30'N  
42°15'N  
42°N  
41°45'N  
41°30'N  
41°15'N  
41°N  
40°45'N  
40°30'N  
40°15'N  
40°N  
39°45'N

0°45'W 79°15'W 78°W 76°30'W 75°W 73°30'W 72°W 70°30'W 69°W 67°30'W 66°W 64°30'W 63°W

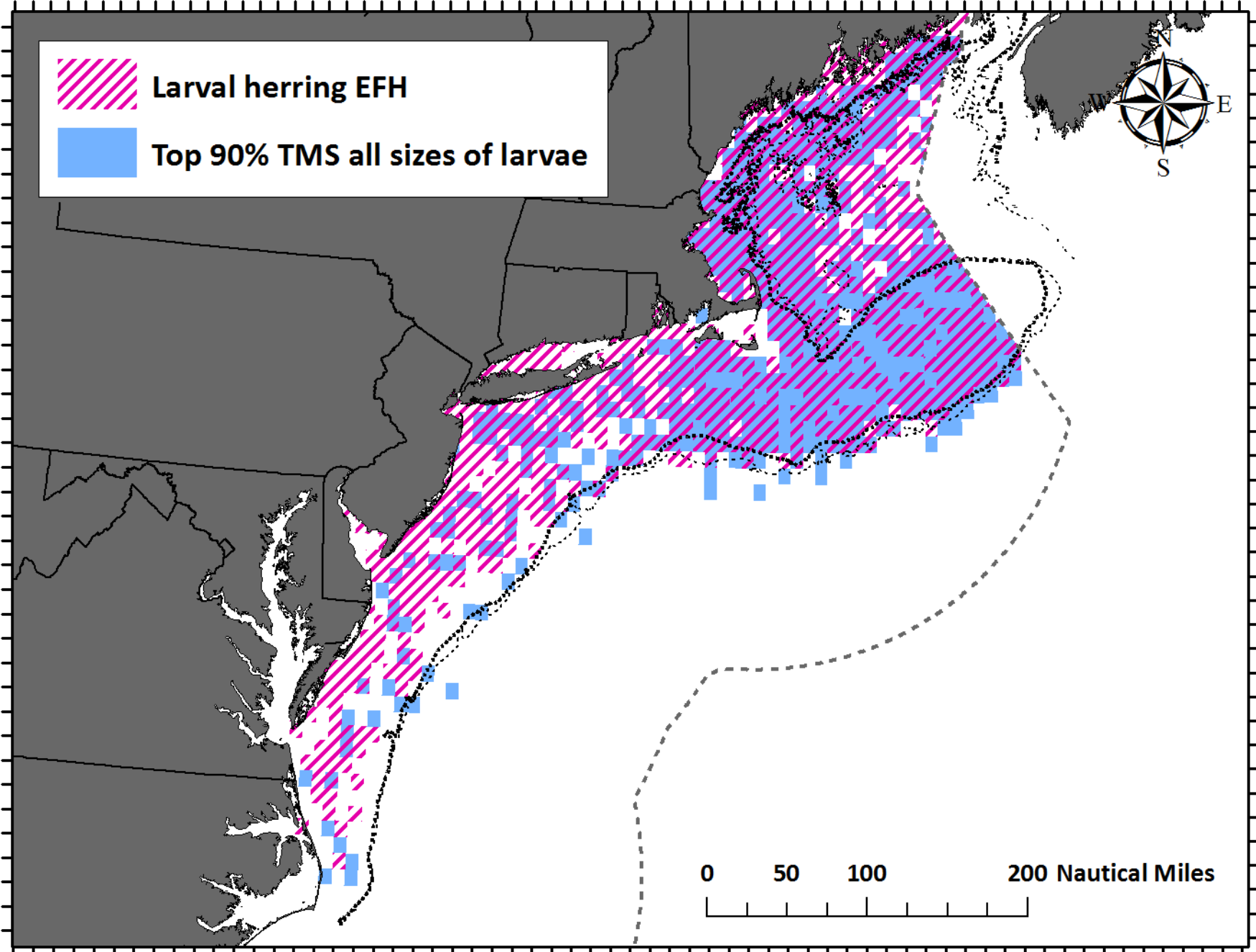
 Larval herring EFH

 Top 90% TMS all sizes of larvae



44°15'N  
43°45'N  
43°15'N  
42°45'N  
42°15'N  
41°45'N  
41°15'N  
40°45'N  
40°15'N  
39°45'N  
39°15'N  
38°45'N  
38°15'N  
37°45'N  
37°15'N  
36°45'N  
36°15'N  
35°45'N  
35°15'N

0 50 100 200 Nautical Miles

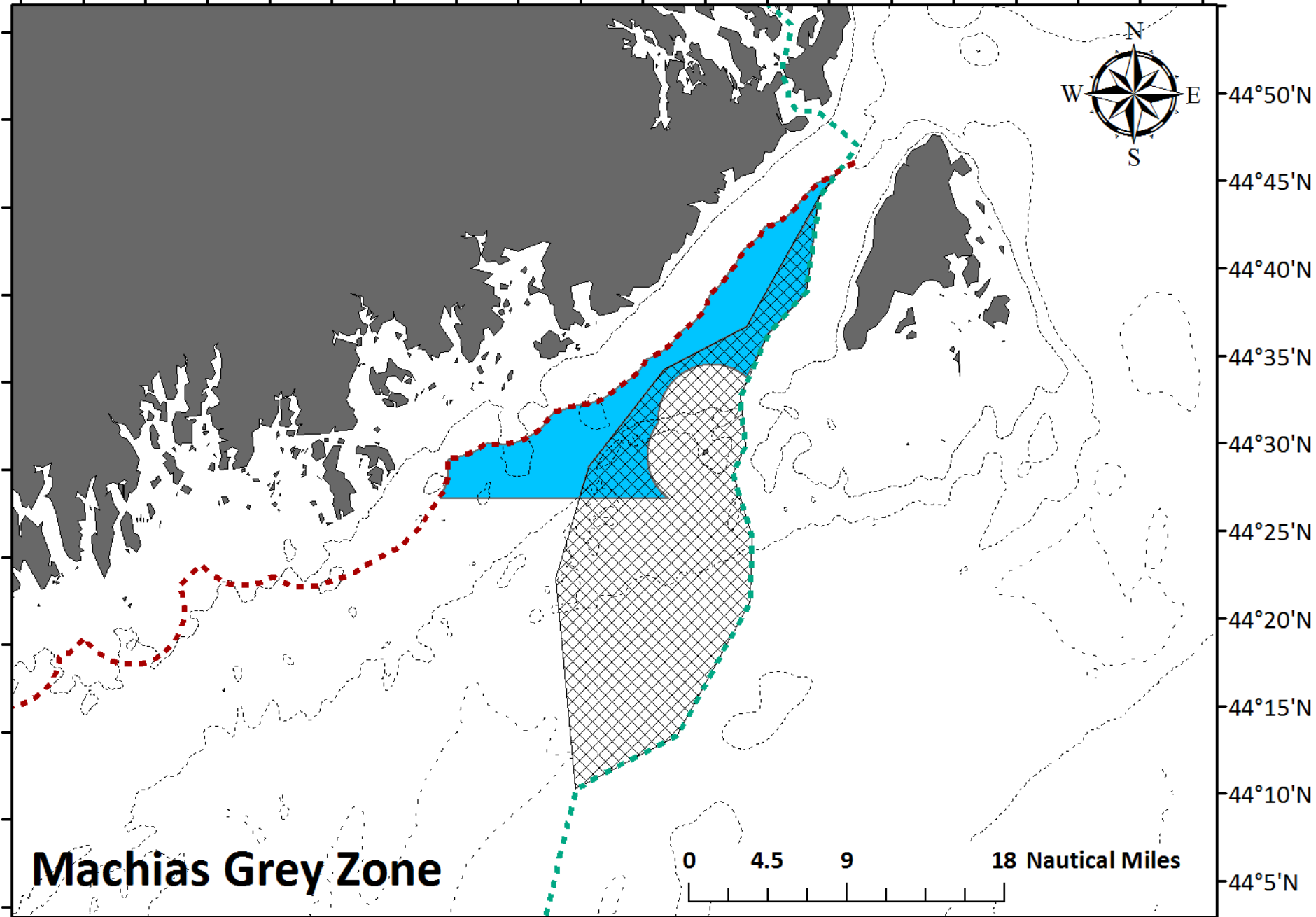


# Eastern Gulf of Maine Habitat

- Committee preferred: Small Eastern Maine with Option 1
- Council preferred: Alternative 2, Large Eastern Maine and Machias, with Options 1 and 5
- Advisory panel preferred: No Action
- Other areas: Sm. E. Maine (Alt. 3), Machias (Alts. 2, 3), Toothaker Ridge (Alt. 3)



67°55'W 67°45'W 67°35'W 67°25'W 67°15'W 67°5'W 66°55'W 66°45'W 66°35'W 66°25'W






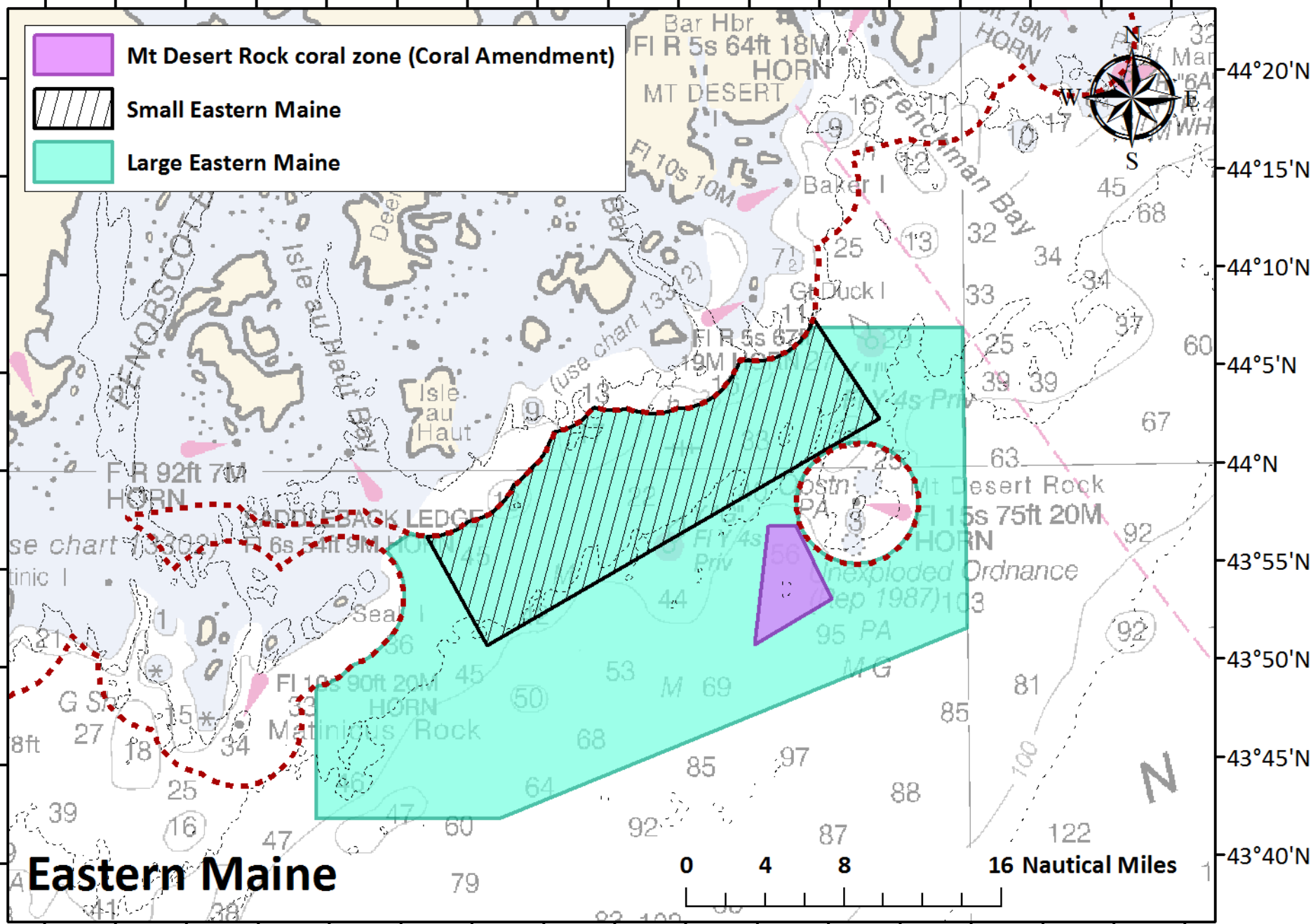
**Machias Grey Zone**

0 4.5 9 18 Nautical Miles



69°5'W 68°55'W 68°45'W 68°35'W 68°25'W 68°15'W 68°5'W 67°55'W 67°45'W

-  Mt Desert Rock coral zone (Coral Amendment)
-  Small Eastern Maine
-  Large Eastern Maine



**Eastern Maine**

0 4 8 16 Nautical Miles

# Central Gulf of Maine Habitat

- Committee preferred: Mod. Cashes Ledge, Mod. Jeffreys Bank, Ammen Rock, Fippennies
- Council preferred Alternative 4: Mod. Cashes Ledge, Mod. Jeffreys Bank, Ammen Rock
- Other alternatives
  - Alternative 1/No Action: Cashes Groundfish, existing Cashes Ledge and Jeffreys Bank habitat closures
  - Alternative 2: No closures
  - Alternative 3: Committee preferred plus Platts Bank





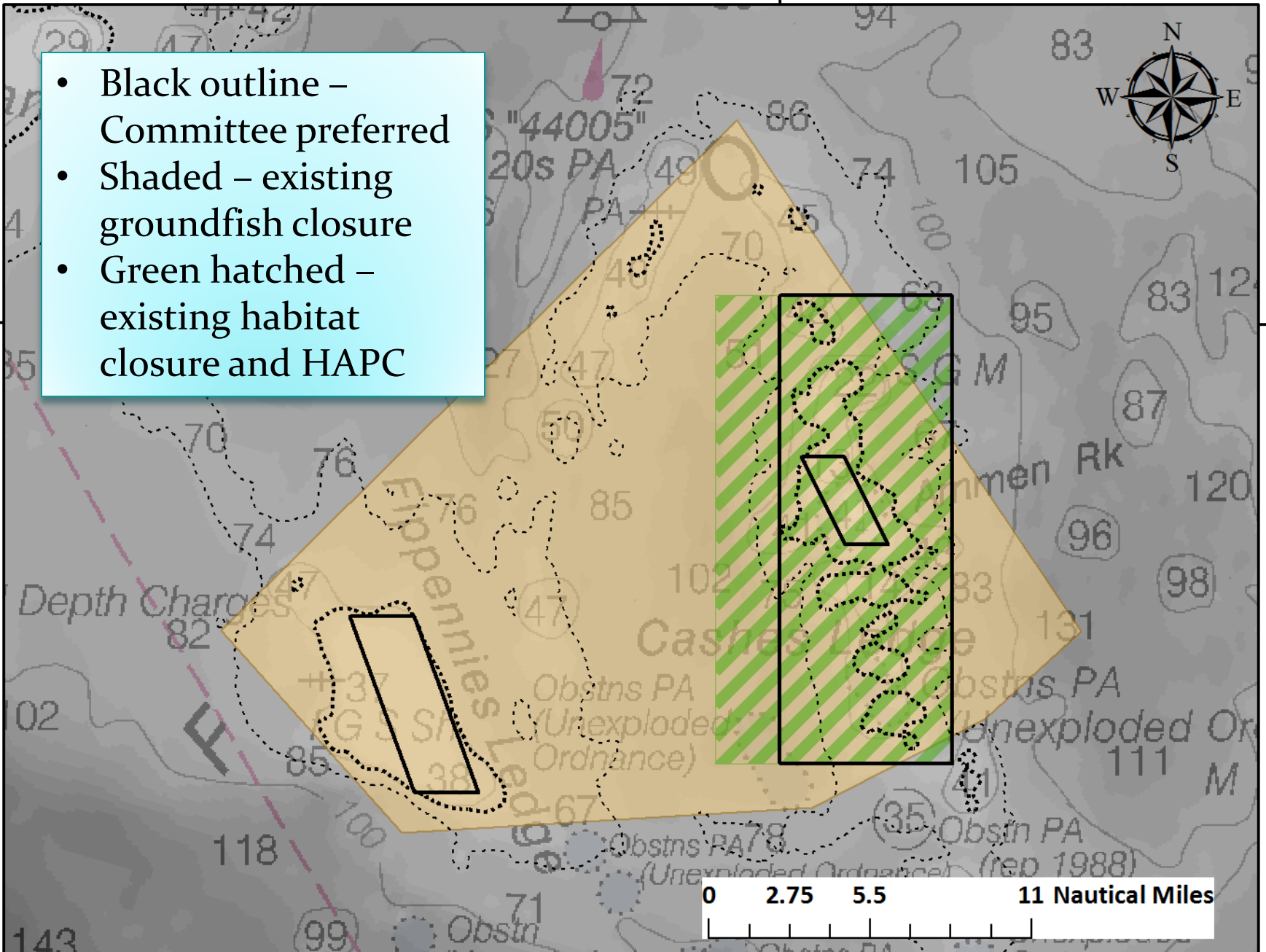
69°W



- Black outline – Committee preferred
- Shaded – existing groundfish closure
- Green hatched – existing habitat closure and HAPC

43°N

0 2.75 5.5 11 Nautical Miles



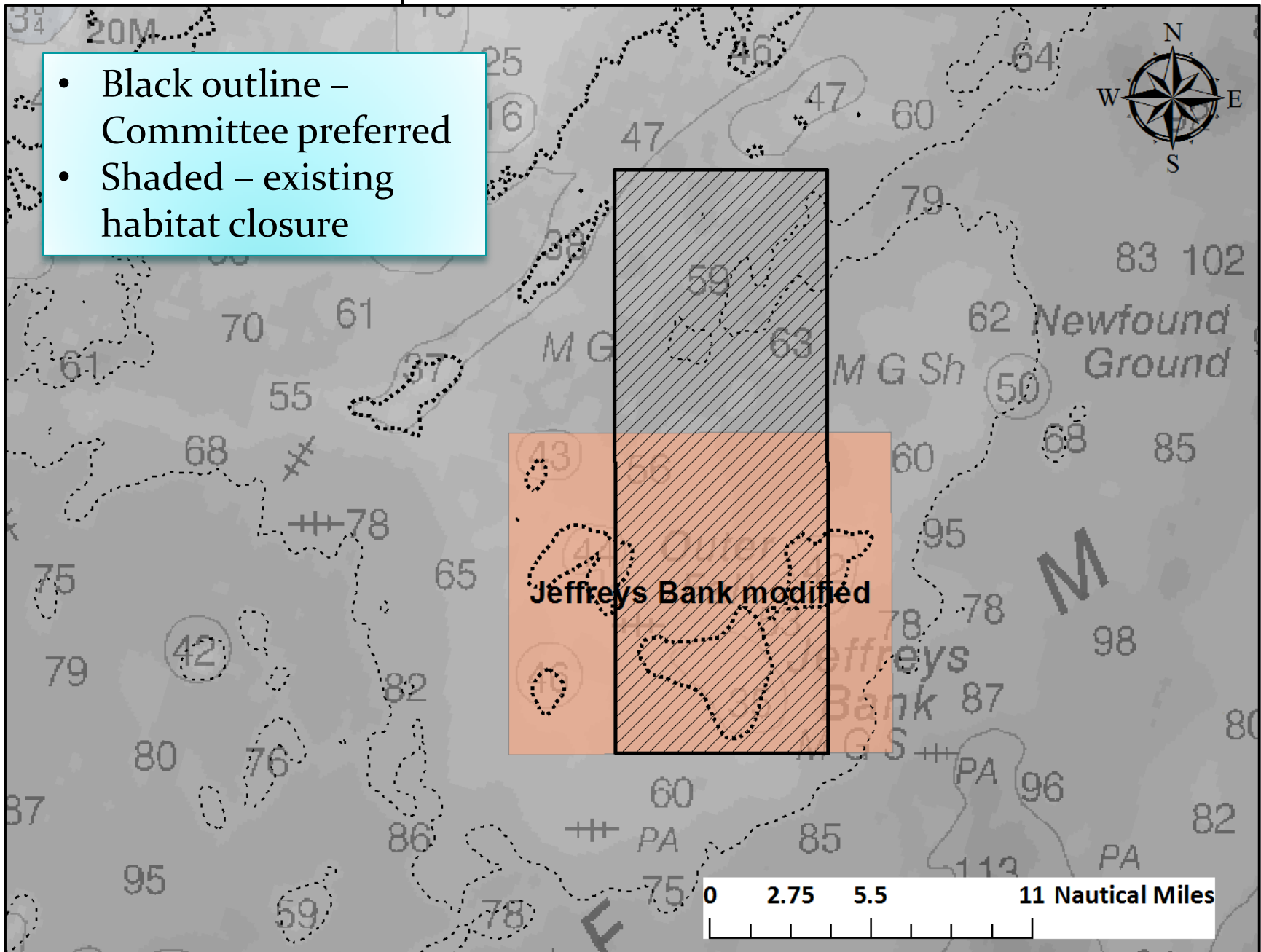
69°W

- Black outline – Committee preferred
- Shaded – existing habitat closure



Jeffreys Bank modified

0 2.75 5.5 11 Nautical Miles



# Western Gulf of Maine Habitat

- Committee preferred: WGOM Groundfish minus eastern 5-mile sliver, and WGOM habitat
- Council preferred: No Action (WGOM Groundfish as-is)
- Other alternatives: combinations of Large and Small Bigelow Bight, Large and Small Stellwagen, and Jeffreys Ledge



71°30'W 71°15'W 71°W 70°45'W 70°30'W 70°15'W 70°W 69°45'W 69°30'W 69°15'W 69°W

Committee preferred  
in yellow shading



43°30'N

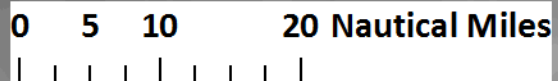
43°15'N

43°N

42°45'N

42°30'N

42°15'N



71°15'W 71°W 70°45'W

70°15'W 70°W 69°45'W

69°15'W 69°W 68°45'W

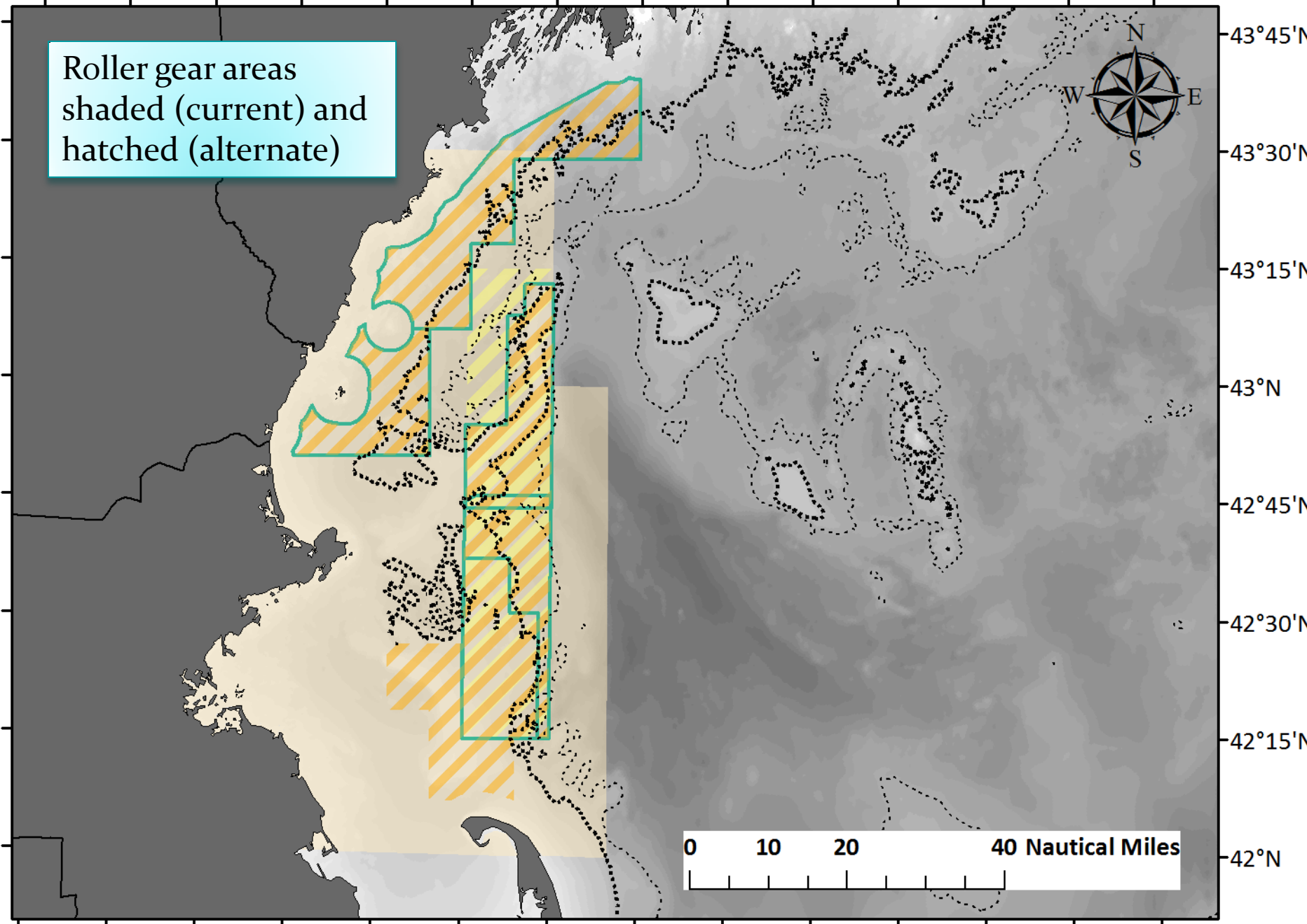
68°15'W

Roller gear areas  
shaded (current)  
and hatched (alternate)



43°45'N  
43°30'N  
43°15'N  
43°N  
42°45'N  
42°30'N  
42°15'N  
42°N

0 10 20 40 Nautical Miles



# Gulf of Maine spawning

- Committee preferred: Framework 53 cod protection zones and Framework 53 spawning area (i.e. Whaleback Area) as sufficient for spawning protection. Also, Alternative 3 - Massachusetts Bay area
- Council preferred: Alternative 1/No Action
- Other alternatives: Alternative 2



# Dedicated Habitat Research Areas

- Eastern Maine DHRA (Council preferred)
- Stellwagen DHRA with northern reference area (Committee/Council/Advisory Panel preferred)
- Georges Bank (Committee/Council/Advisory Panel preferred)
- Sunset provision (Council/Committee preferred)





# Georges Bank Habitat

- Committee preferred: Alternative 7, Georges Shoal 2 and EFH South, with Option 1
- Committee also identified two additional areas for consideration
- Advisory Panel also preferred Georges Shoal 2 and EFH South, but with Option 2
- No Council preferred
- Other areas: Northern Edge (3), Northern Georges Bank (8), Georges Shoal 1 (5), EFH Extended 1 (6a), EFH Extended 2 (6b)





# Other Georges Bank Areas

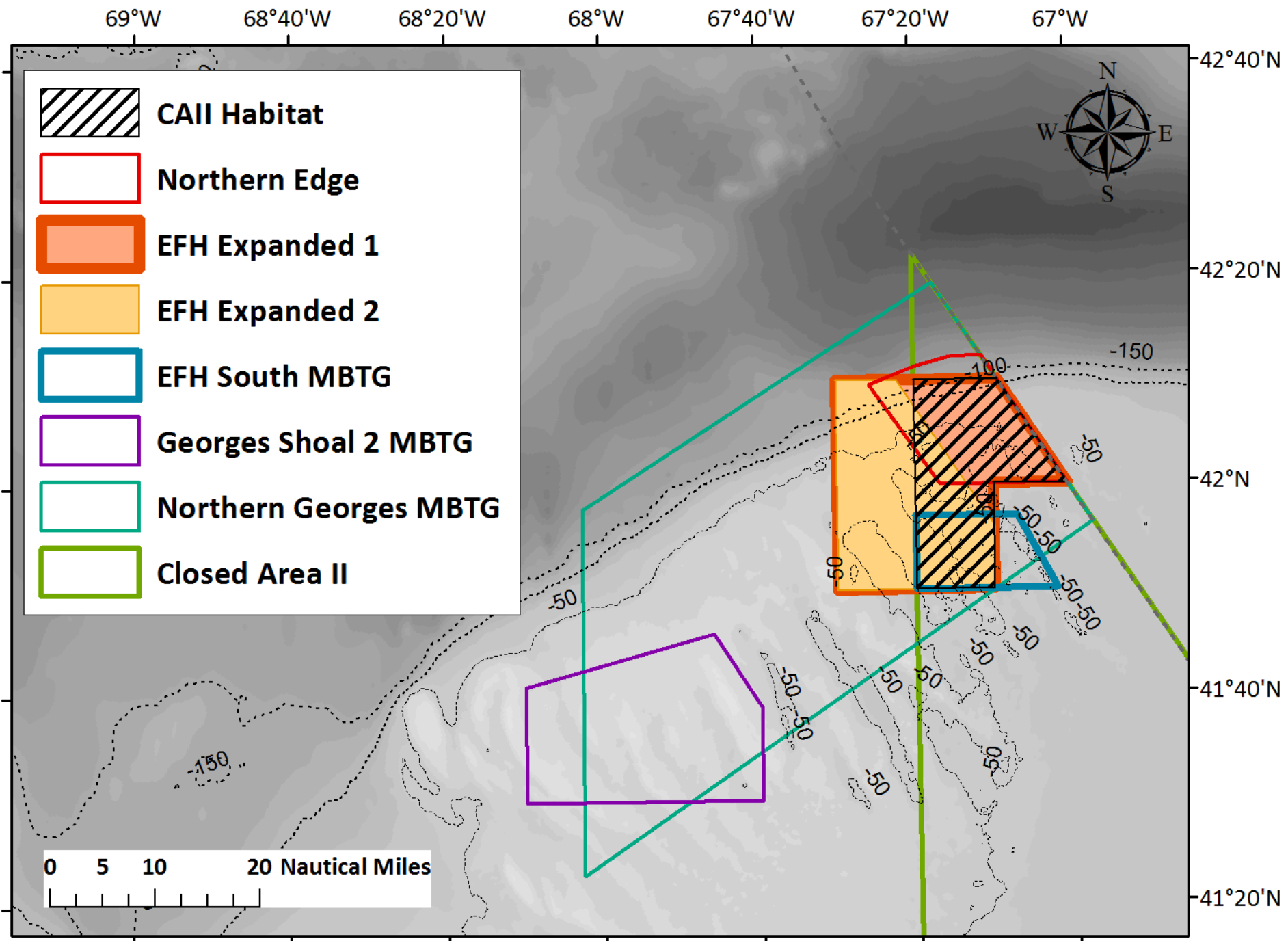
## Mobile bottom-tending gear closures

- Northern Edge
- Northern Georges Bank
- Georges Shoal 1
- EFH Extended 1
- EFH Extended 2

## Gear modification areas

- Northern Georges
- Georges Shoal






# Area sizes and overlap along the northern edge of Georges Bank


Area	Alt	Size (km <sup>2</sup> )	Notes
CAII Habitat Closure	1	641	Baseline for other comparisons below
Closed Area II	1	6,862	6,221 km <sup>2</sup> outside habitat closure, and 3,855 km <sup>2</sup> is scallop access area
Northern Edge	3	476	125 km <sup>2</sup> is outside habitat closure
EFH Expanded 1	6a	1152	511 km <sup>2</sup> is outside habitat closure; overlaps habitat closure 100%
EFH Expanded 2	6b	804	511 km <sup>2</sup> is outside habitat closure, 293 km <sup>2</sup> overlaps habitat closure (46%)
EFH South	7	278	179 km <sup>2</sup> overlaps habitat closure (28%), total size of area is about 40% of the habitat closure
Georges Shoal 2	7	1,025	No overlap with existing habitat closure
Northern Georges	8	4,788	4,147 km <sup>2</sup> is outside habitat closure; overlaps habitat closure 100%




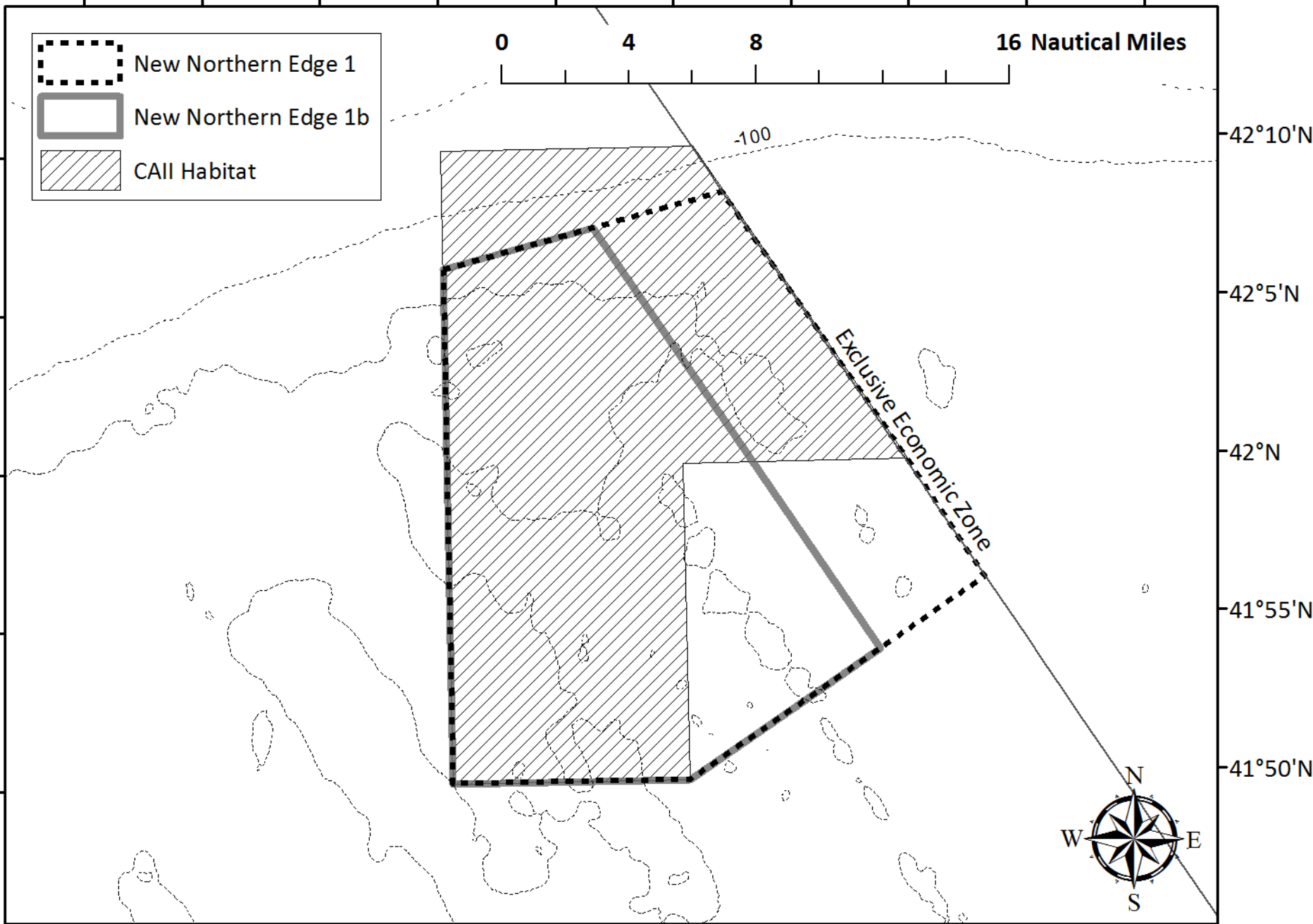
67°35'W 67°30'W 67°25'W 67°20'W 67°15'W 67°10'W 67°5'W 67°W 66°55'W 66°50'W

0 4 8 16 Nautical Miles

 New Northern Edge 1

 New Northern Edge 1b

 CAII Habitat



42°10'N

42°5'N

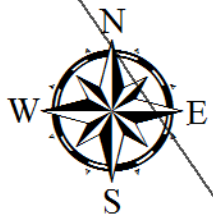
42°N

41°55'N

41°50'N

Exclusive Economic Zone

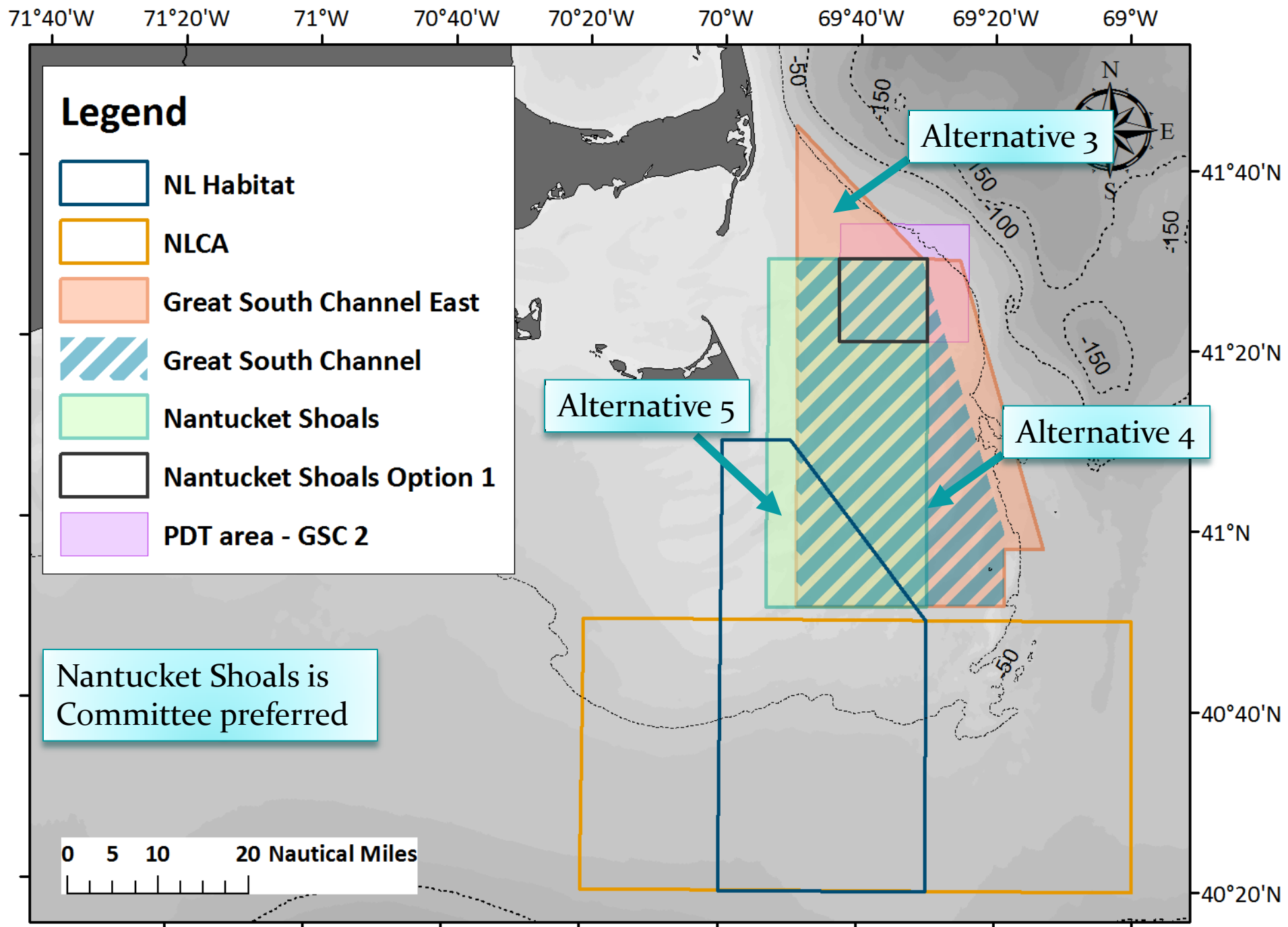
-100



# Great South Channel Habitat

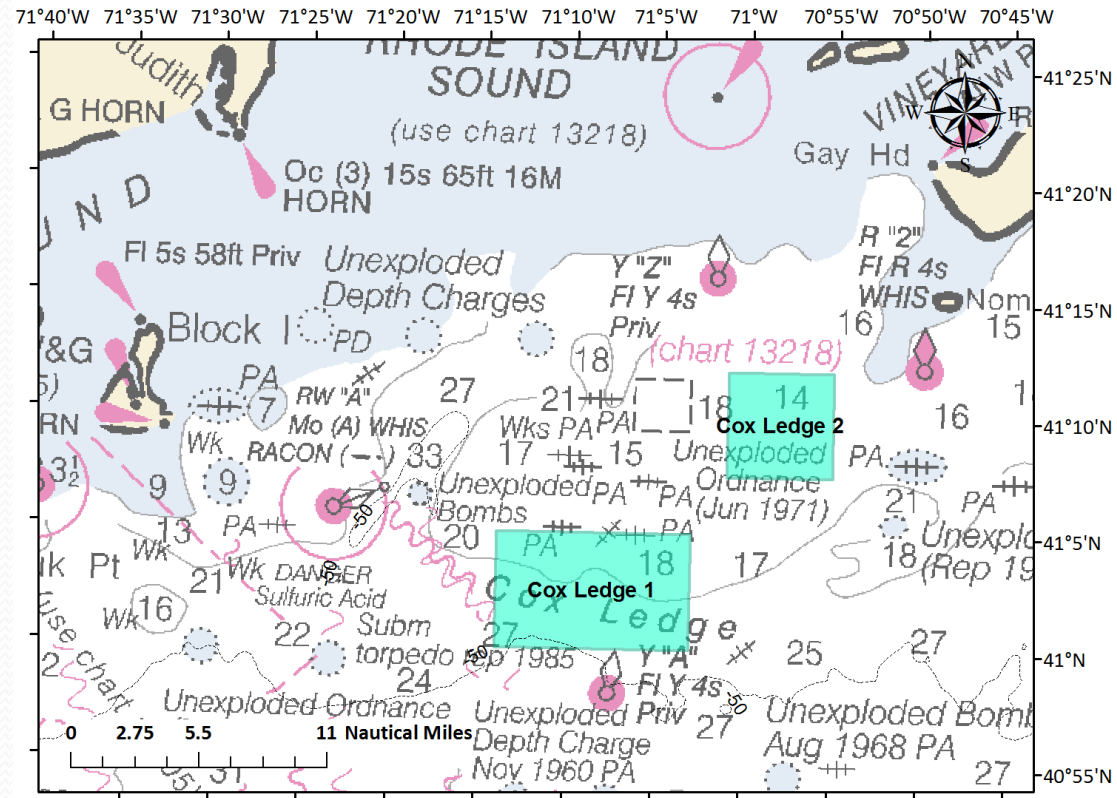
- Committee preferred: Nantucket Shoals with combination of Options 1 and 2 in different areas
- Advisory Panel preferred: Nantucket Shoals with Option 2
- No Council preferred
- Other areas: Great South Channel East, Great South Channel, Nantucket Shoals West, Great South Channel Gear modification area





# Cox Ledge Habitat Areas

- Committee recommended separate discussion of this area
- Committee preferred with no ground cables and no hydraulic clam dredges
- Advisory Panel preferred with no hydraulic clam dredges



# Georges Bank/SNE Spawning

- Committee preferred: Closed Area I North and Closed Area II, Feb 1 – Apr 15, closed to selected commercial and recreational gears (Option B), exemption for sea scallop dredges (Option C)
- Council preferred: same, except all of Closed Area I, and Council did not weigh in on sea scallop dredge exemption
- Other alternatives: Alternative 1/No action; closure to selected commercial gears only (Option A)





# Framework and monitoring

- Committee and Council preferred: Alternative 2
  - Specify additional spatial management measures as frameworkable in various Council FMPs,
  - Develop a regular, strategic process to review the effectiveness of spatial management measures, and
  - Define a series of research priorities related to the review and development of spatial management measures.
- Other alternative: Alternative 1/No Action
  - Existing frameworkable measures, ad-hoc review schedule

