



Current NE Fishery Stock Assessment Process

Jan 2016

<http://www.nefsc.noaa.gov/nefsc/saw/>

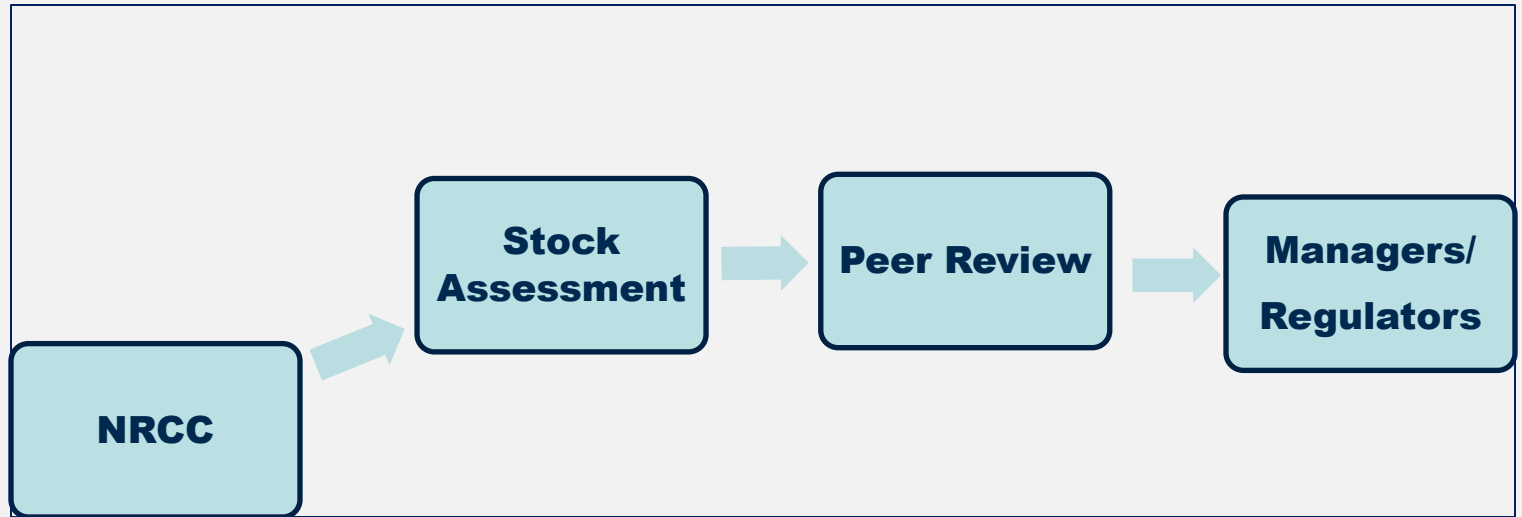
Talk Outline:

- **1. Flow Chart -- the Process**
 - Roles of the SSC

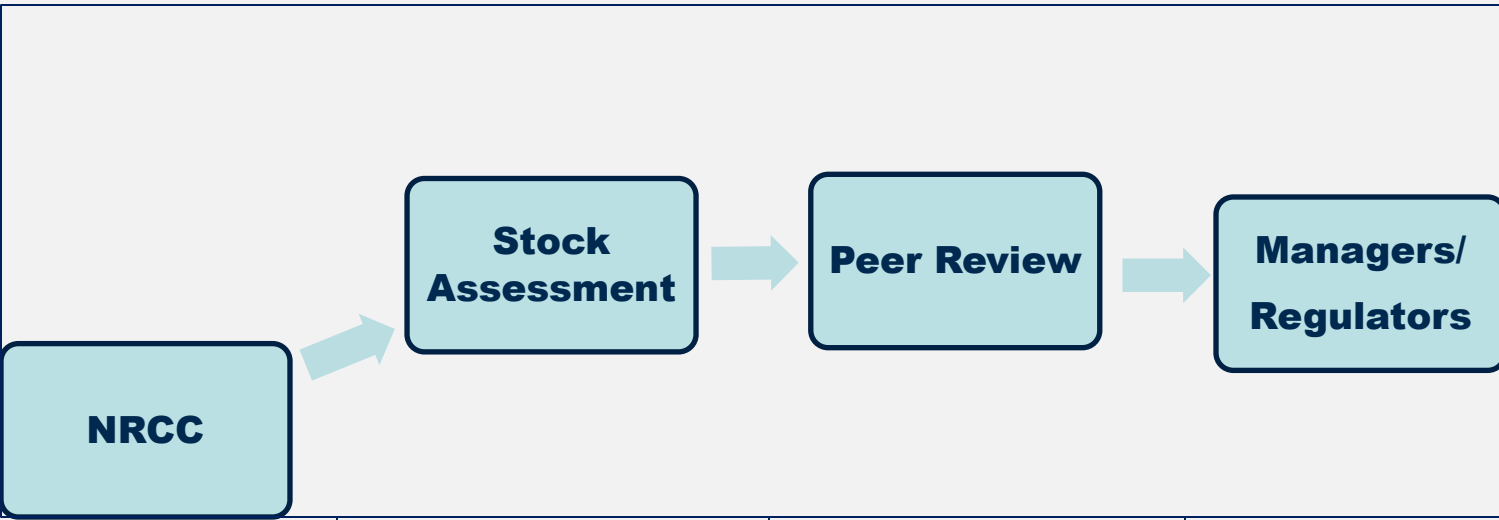
- **2. Types of Assessments**

- **3. Guidelines**
 - SAW WG Formation/Membership
 - Peer Review Meeting

1. Flow chart :



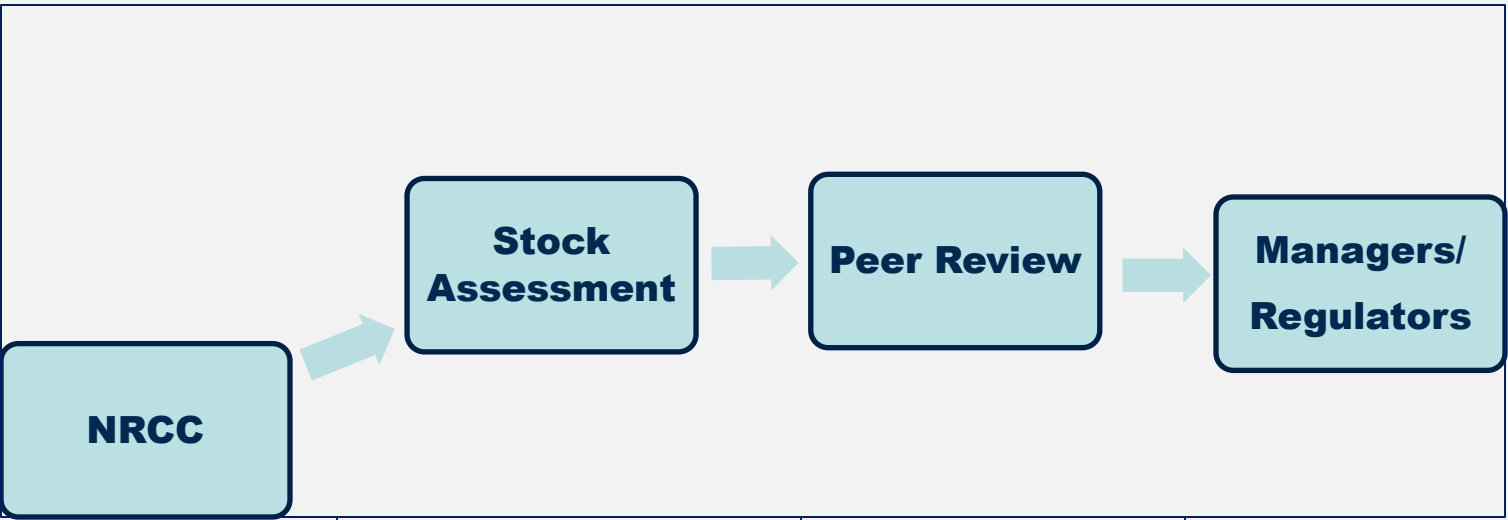
Flow chart :



SSC Involvement (SARCs):

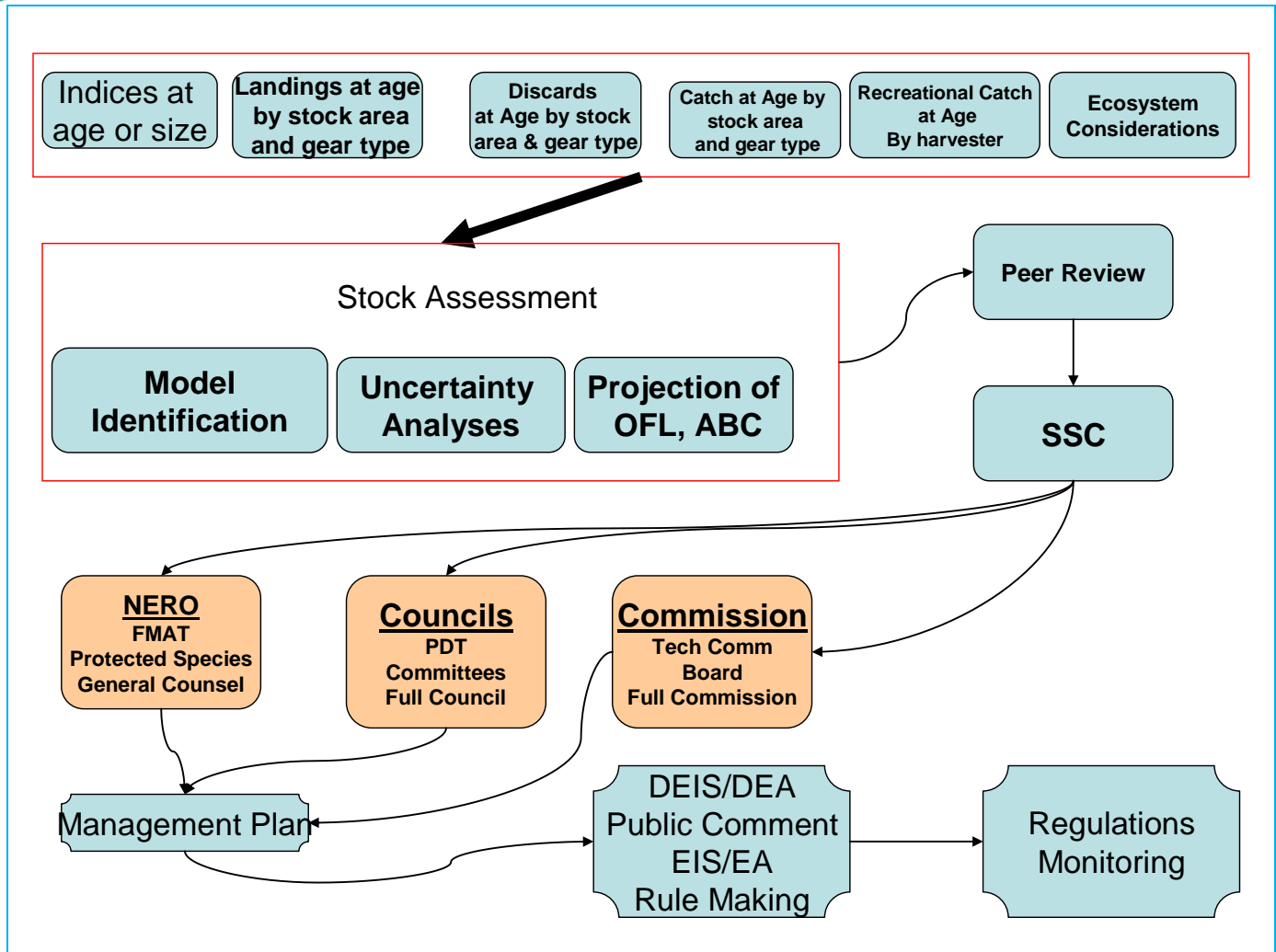
Y	possible	Y	Y
---	----------	---	---

Flow chart :



SSC Involvement (SARCs):

<p>Y</p>	<p>possible</p>	<p>Y</p>	<p>Y</p>
<ul style="list-style-type: none"> •SSC Chair attends NRCC •Scheduling • TOR review 	<ul style="list-style-type: none"> •Analyst <u>or</u> Invited Expert <u>or</u> Attendee •Conflict of Interest (a concern) 	<ul style="list-style-type: none"> •Serve as SARC Chair 	<ul style="list-style-type: none"> •Provide science advice to Councils (e.g., ABC)



2. Types of Assessments:

- **Benchmark Stock Assessment**
- **Operational Assessment**
- **Assessment Update**
- **Data Update**

Types of Assessments:

- **Benchmark Stock Assessment**

- SAW WGs formed
- Data and Model Changes permitted;
- SARC peer review with SSC chair and CIE

- **Operational Assessment**

- Lead Assessment Scientist
- Minimal scope for change
- Assessment Oversight Panel (AOP)
- Less peer review

- **Assessment Update**

- Lead Assessment Scientist
- No scope for change
- Provided directly to SSC

- **Data Updates**

- Provided annually to MAFMC
- No model run; nor stock status

3a. SAW WG Formation/Membership

- **New written guidelines since 2015**
 - **Goals -- more & better products, efficiency**
- **Eligibility Criteria for Membership**
 - **Independence, education, expertise**
 - **WG composition/balance**
- **Role of Invited collaborators**

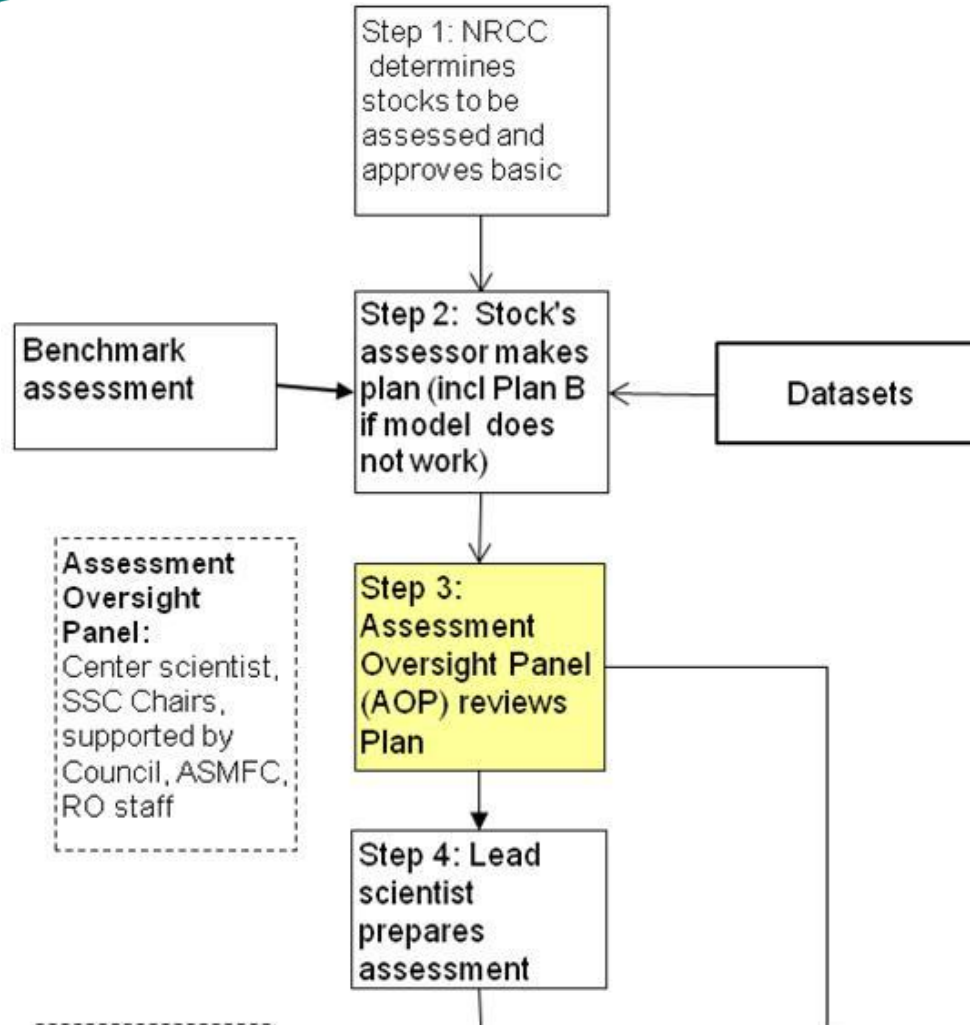
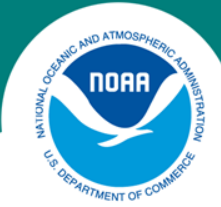
<http://www.nefsc.noaa.gov/nefsc/saw/>

3b. Peer Review Process

- **Defined Stages of the meeting**
 - **2014: Guidelines on public comment (PC)**
- **Changes:**
 - **PC periods added. Scheduled, not random**
 - **Less PC during Summary stage**
 - **All stages open to public**

<http://www.nefsc.noaa.gov/nefsc/saw/>

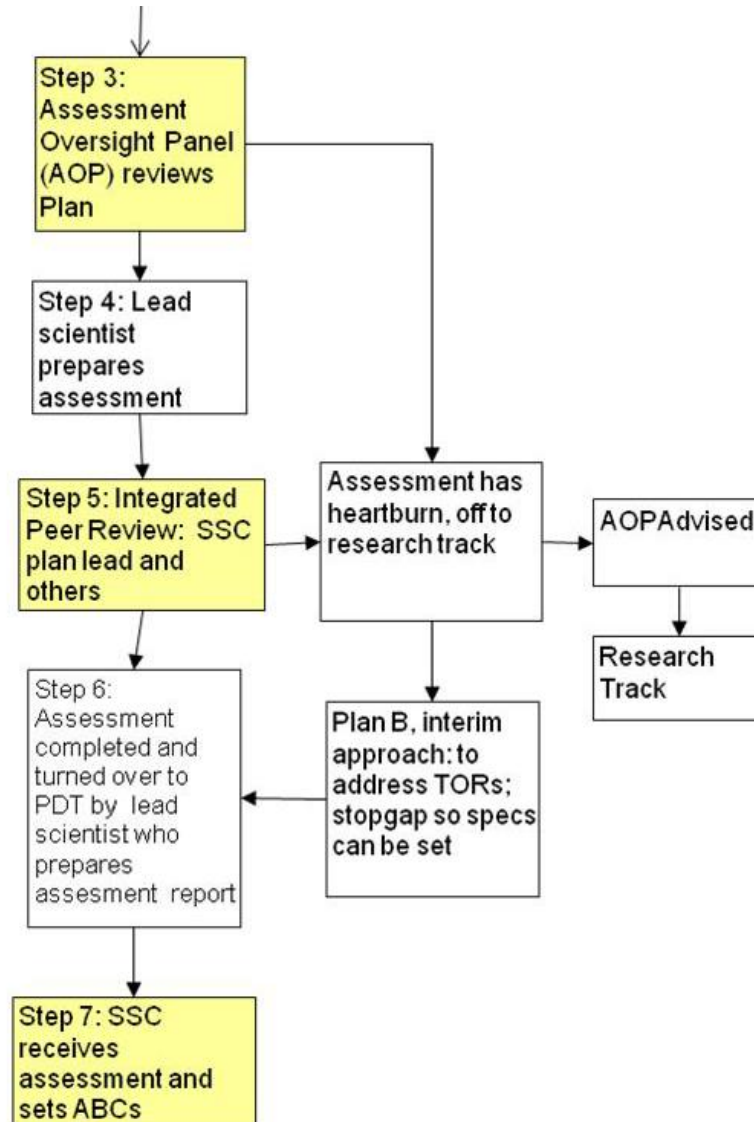
(More slides)





Assessment Oversight Panel:
Center scientist, SSC Chairs, supported by Council, ASMFC, RO staff

Integrated Peer Review: SSC Plan Lead, Lead scientist, Council/RO Staff, State scientists





- “Operational” and “research track” assessments
- 10-25 “operational” assessments/yr
- Quicker and more responsive
- Shorter list of ToRs
- Less peer review, with more SSC participation
- “Research track” to develop new methodologies