

Review of Scallop Framework26

**Deirdre Boelke, NEFMC Staff,
Scallop PDT Chair**

**Enforcement Committee
October 27, 2014**



New England
Fishery Management Council

Outline of Presentation

- Part I: Summarize FW26 Alternatives
- Part II: Identify specific issues Scallop Committee wants input on
- Part III: Input on other measures, if time permits

**Input will be forwarded to Scallop Committee at their
October 29 Meeting**

Framework 26 - Purpose and Need

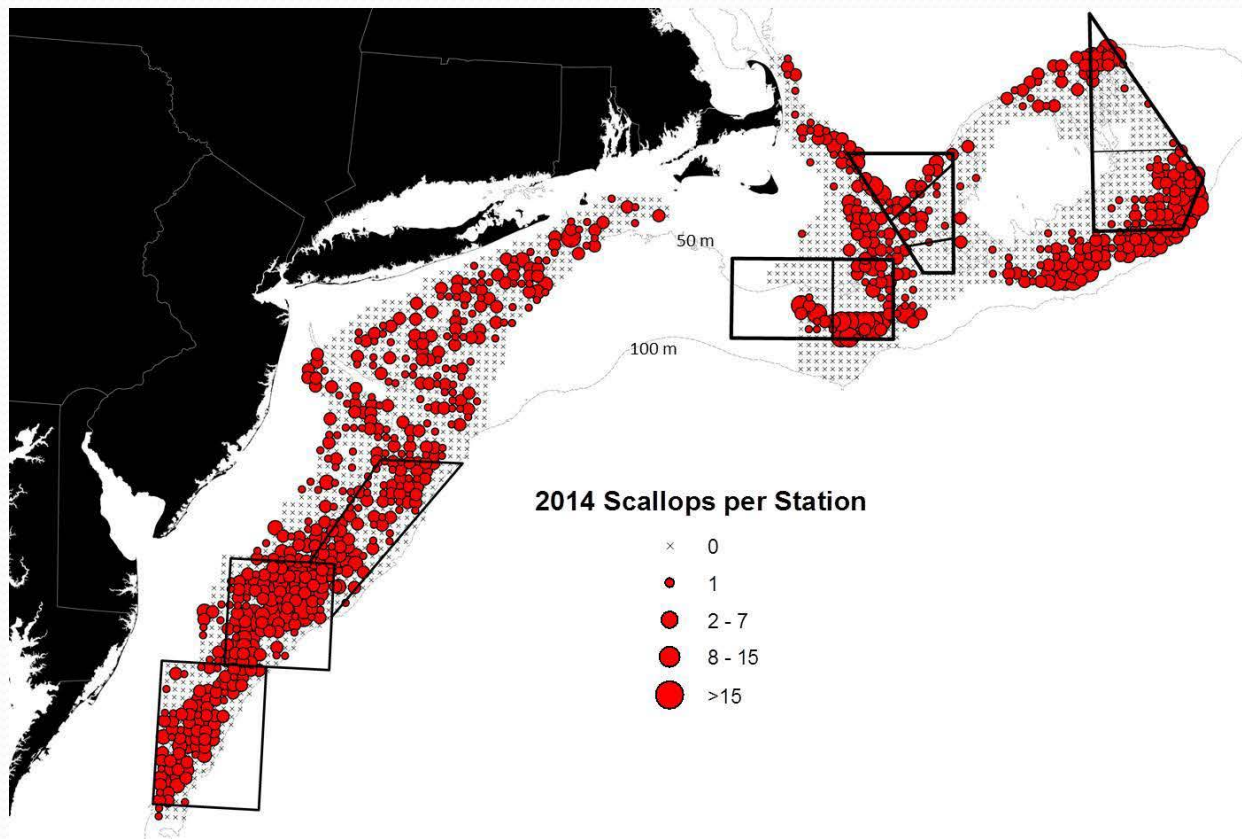
- The purpose of this action is to prevent overfishing and improve yield-per-recruit from the fishery.
- The primary need for this action is to set specifications to adjust the day-at-sea (DAS) allocations, general category fishery allocations and area rotation schedule for 2015 and 2016 (default)
- In addition, the Council added other issues to be addressed
 1. Allow fishing in state waters after NGOM hard-TAC is reached
 2. Make turtle regulations consistent
 3. New AMs for northern WP and modify AMs for GB and SNE/MA YT
 4. Allow a limited access vessel to declare out of fishery on return to port
 5. Revise “flaring bar” provision for turtle deflector dredge regulations

Scallop FMP Today

- Resource is rebuilt, no overfishing, not overfished
- All permits limited entry; about 350 LA vessels and 200 general category vessels (IFQ, NGOM, and incidental)
- Landings have been above 50 mil lbs. since 2002, with more recent decline (<40 mil lbs in 2013 and 2014)
- IFQ vessels allocated 5.5% of total catch and limited access vessels 94.5%
- Revenues about \$500-600 million in 2010-2012, with more recent decline in 2013 and 2014
- Vessels more efficient – FT vessel fishing about 60-70 days per year (average of 2-2,500 pounds per day)

2014 scallop surveys

- High concentrations of small scallops in patches throughout GB and MA
- Younger scallops inshore areas in MA



SMAST 2014 Survey

Section 2.2 - Specification Alternatives

- All GB access areas will be closed, 3 MA trips, modest increase in DAS (34 or 35 DAS vs. 31 DAS in 2014)
- Total catch about 45-48 million pounds (over 10 million lb. increase from 2013)

- **Alternative 1 – No Action**

- Default from FW25 - 75% of projected DAS, no AA trips

- **Alternative 2 – Basic Run**

- No changes to AA boundaries

- **Alternative 3 – Modify access areas to reduce impacts on small scallops (CA2, NL, and ETA)**

- **Alternative 4 – No modifications to AA and reduce F in MA AA to reduce impacts on small scallops**

Section 2.5 - Allow fishing in state waters after NGOM hard-TAC is reached

- 2.5.1 – No Action

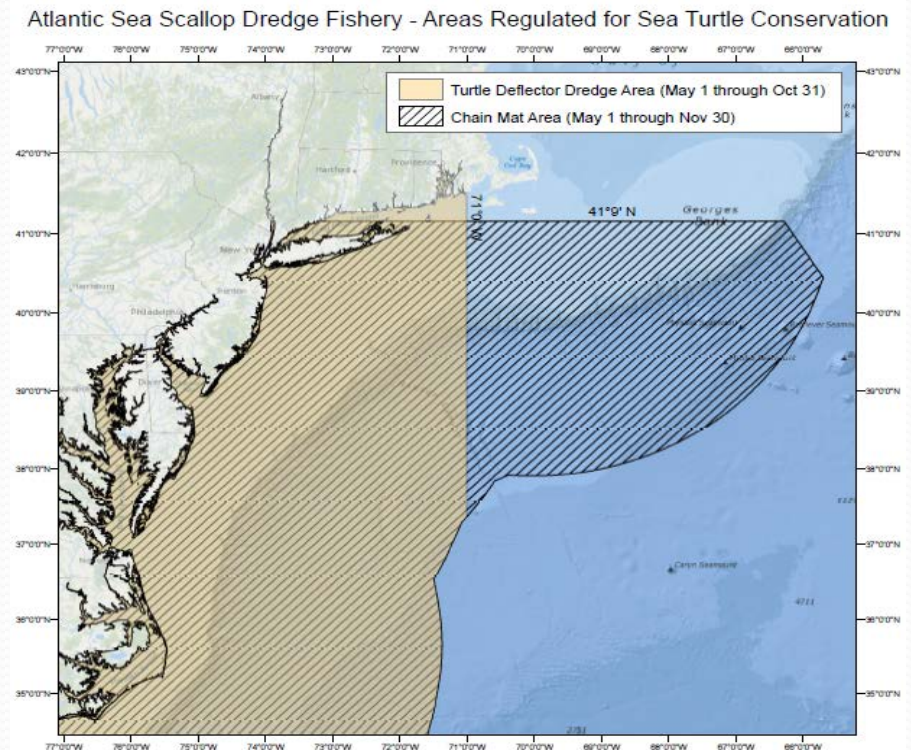
Once the NGOM hard TAC is reached all vessels with federal scallop permit prohibited from fishing for scallops in NGOM

- 2.5.2 – All vessels with both a state scallop permit and federal NGOM permit allowed to fish in state waters after federal NGOM TAC reached

- 2.5.3 – Revise state water exemption program provisions to allow a state to request a specific exemption related to fishing in state waters after the NGOM TAC is reached

Section 2.6 - Make turtle regulations consistent

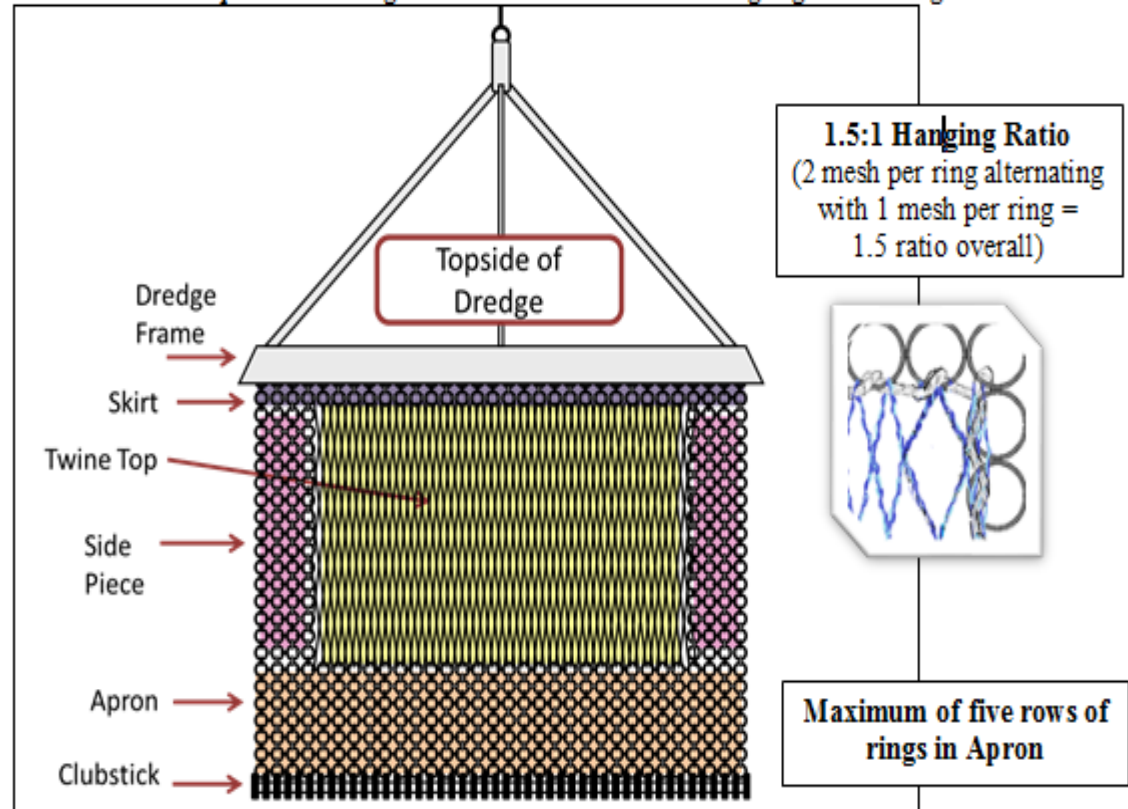
- 2.6.1 – No Action - Season and area remain what they are
- 2.6.2 – Revise season and area to be the same for both (waters west of 71° W from May – November)



Section 2.7 - New AMs for northern WP and modify AMs for GB and SNE/MA YT

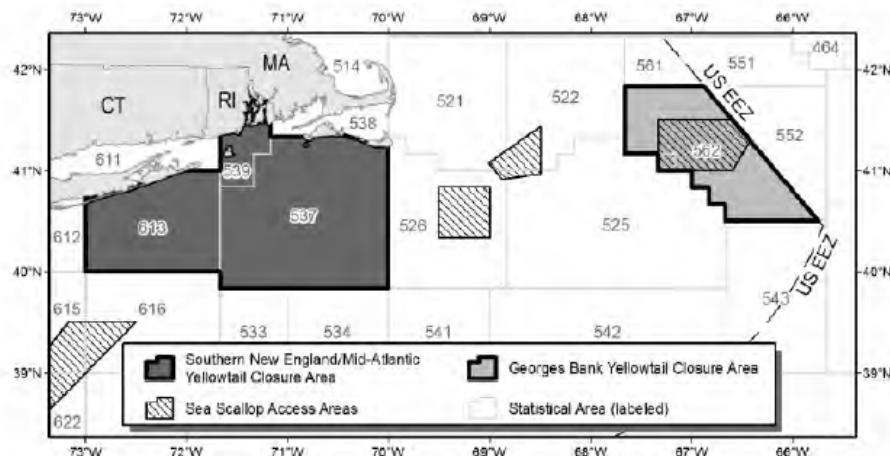
- 2.7.1 – AM for northern WP
- 2.7.2 – Modify GB and SNE/MA YT AMs
- Southern WP AM – Gear modified area - west of 71W, excluding MA AAs - Month of Feb if overage <20%, Feb and Mar if overage >20%

Figure 7 – Typical Scallop dredge gear (topside of gear on top and underside on bottom)
Gear requirements for gear restricted AM alternative highlighted in margin



Current Area closure AMs for YT

- 3 different AMs in place for SNE/MA YT based on permit and gear types
- One AM for GB for LA vessels only – season varies based on % overage and whether CA2 is open or closed
- LA AM – SNE/MA and GB



Map 1. AM closure areas for limited access vessels in GB and SNE/MA. Note that the closure areas in SNE/MA are identical to those for the LAGC IFQ fishery when fishing with dredges.



Section 2.8 - Allow a limited access vessel to declare out of fishery on return to port

- **2.8.1 – No Action**

LA vessels are charged DAS from the time a vessel positions seaward of VMS demarcation line until it once again positions shoreward of the line

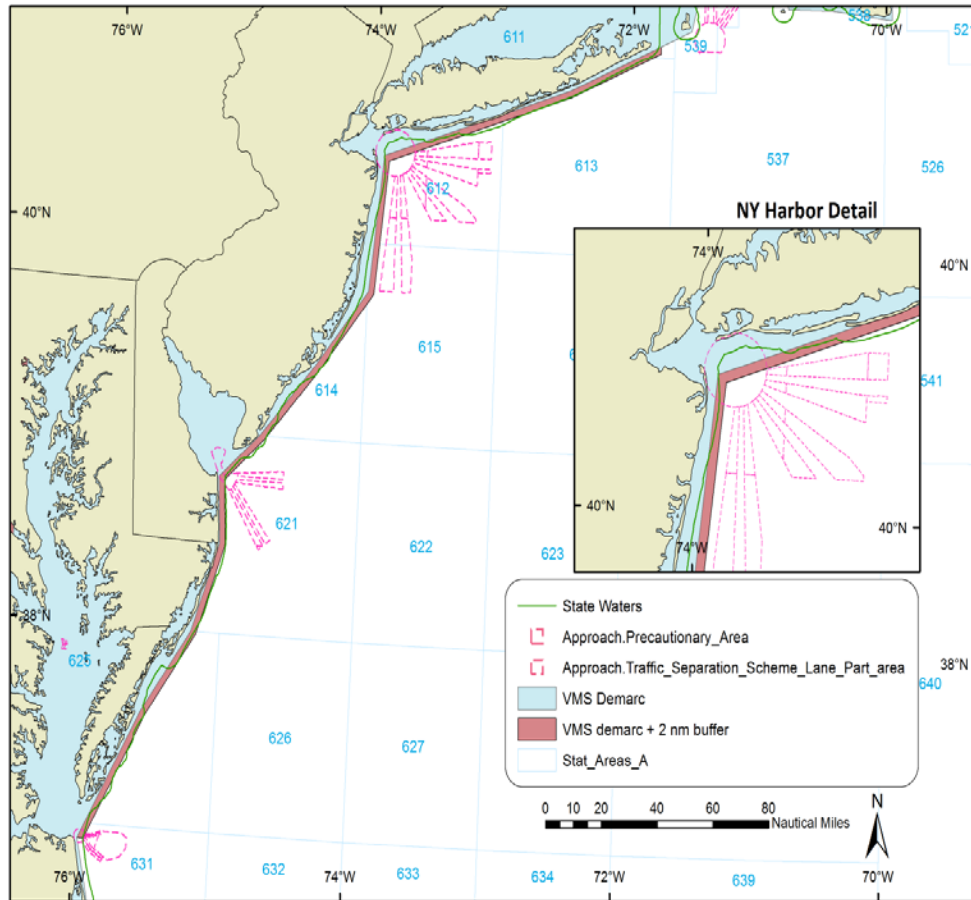
- **2.8.2 – Inshore transit corridor**

Vessels could return to port and not be charged DAS while in corridor. Several requirements recommended to prevent potential abuse

- **2.8.3 – Implement separate VMS declaration code for steaming back to port**

Trip would end when vessel goes inside demarcation line and declare out of fishery, new DOF code with product onboard

Section 2.8.2 – Inshore Transit Corridor

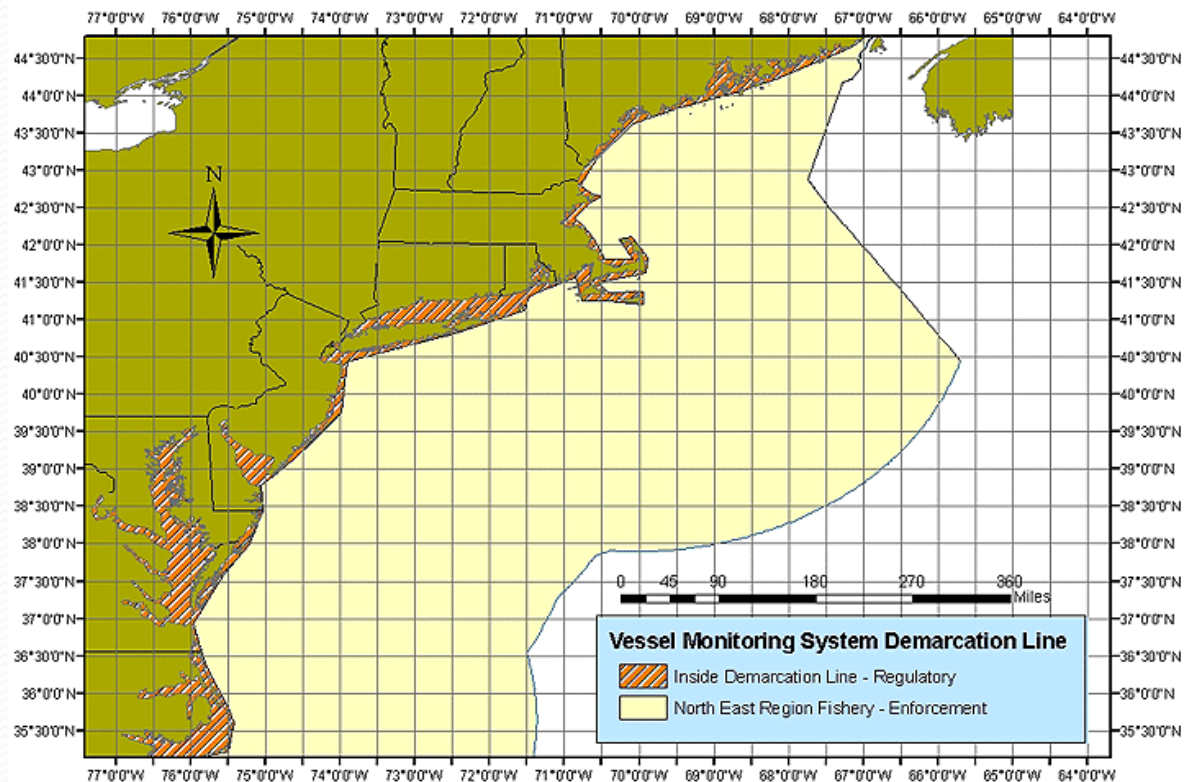


Potential Requirements

- Vessel must return directly to port and offload scallops immediately
- Pre-landings notification required
- No in-shell product on board (or maximum of 50 bu)
- Gear must be stowed
- Increased VMS polling within corridor (suggested as potential measure at Council meeting buy initial input from NMFS OLE is that this is not feasible)
- Others?

Section 2.8.3 – DOF code with product on board when vessel crosses VMS demarcation line on return to port

Same potential requirements as VMS Corridor Alternative



Section 2.9 – Modify regulations related to flaring bar provision for TDD

- 2.9.1 – No Action - Flaring bar can only be connected at one point
- 2.9.2 – Flaring bar could be attached in more than one place, but it must still be at least 12 inches from cutting bar



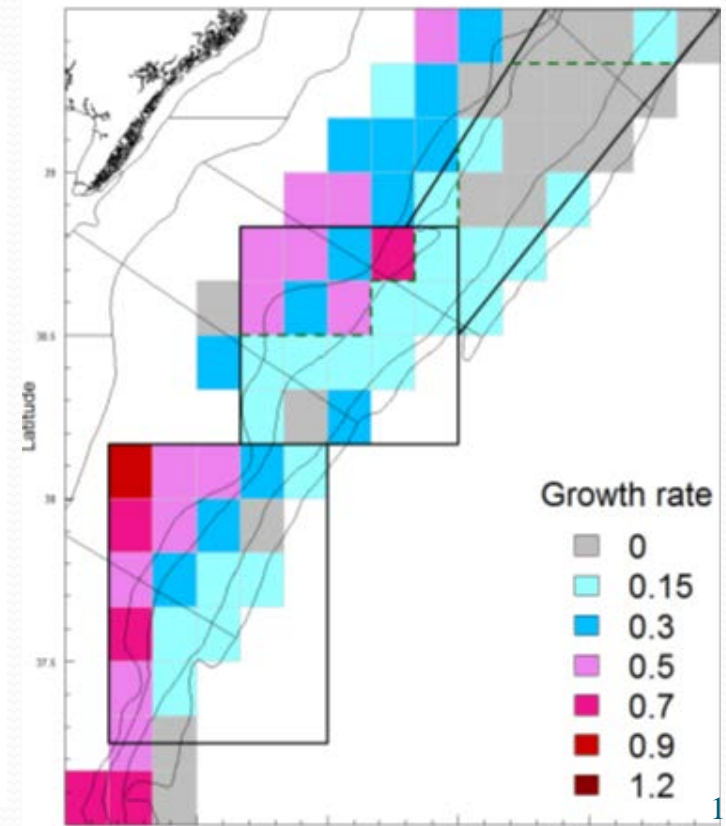
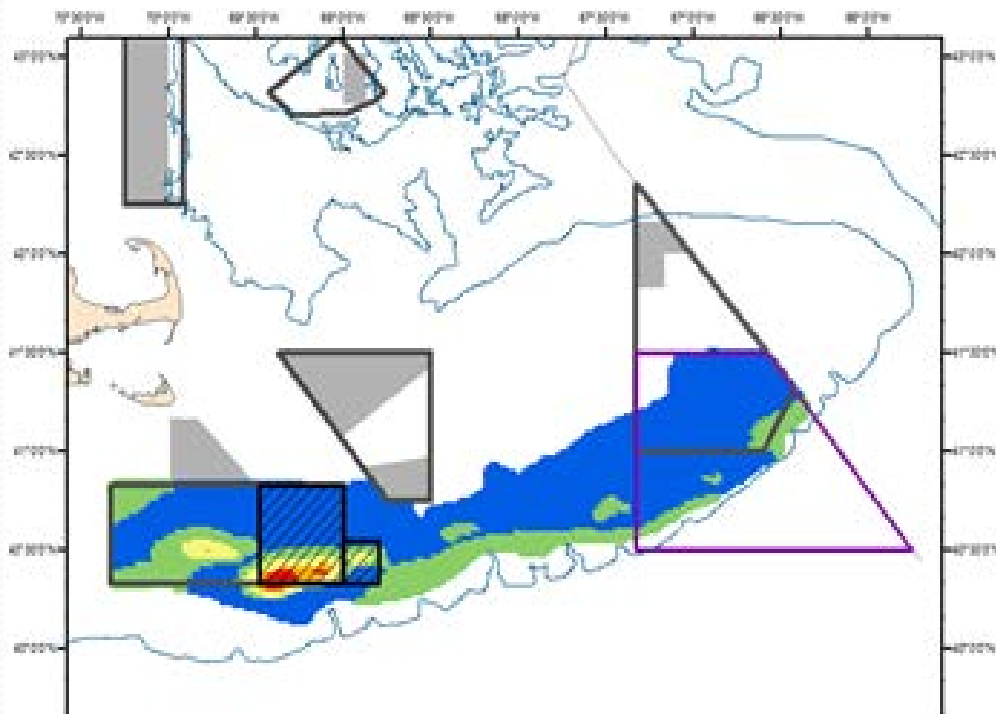
Part II – Enforcement Cmte Input

- Memo from Scallop Committee
- Goal of this meeting – provide input on four topics
 1. New area closures to protect small scallops (Section 2.2.1.2);
 2. Alternatives for allocation method (lottery or flexible allocation that would combine access areas (Section 2.3);
 3. Adjustments to provisions related to allocating and monitoring access area trips (Section 2.4); and
 4. Measures to allow limited access scallop vessels to declare out of fishery on return to homeport on open area trips (Section 2.8)
- If time permits, any other input on other measures (NGOM, turtle measures, and accountability measures)

Issue 1: New area closures

Alternative 3 (Section 2.2.1.3)

Option 1: Extension of CA2 south; Option 2: Extension of NL; and Option 3: Subarea of ETA (7 TMS or 6 TMS)



Issue 1: Enforcement Input

1. Any comments about the boundaries?
2. Transit recommendations
 - Status quo for CA2 – no transit
 - Status quo for NL – transit permitted
 - Area within ETA – no transit

Issue I and III: Allocation of access area trips and monitoring

- Section 2.3

No Action – Lottery

Flexible Allocation – Vessels would declare a MA AA trip and could freely fish inside all three areas on the same trip

- Section 2.4

Adjustments to broken trip provision

Prelanding reports required

Issue II and III: Enforcement Input

1. Any comments about the lottery versus flexible allocation from an enforcement/monitoring perspective?
2. Any comments about broken trip provision?
3. Any comments about prelanding report options?

Issue IV: Allowing LA vessels to declare out of fishery on return to port

- Section 2.8
 - No Action
 - Implement a transit corridor
 - Implement separate VMS declaration code for steaming back to port
- NMFS OLE met about this option in the summer and attended August 6 PDT meeting
 - Corridor would require significant programming changes, new area to enforce, increased safety concerns, one corridor will not fit all
 - More supportive of new DOF code, but increased VMS polling could be an issue

Issue IV: Enforcement Input

1. Is the list of additional requirements sufficient?
2. Any comments about one alternative over the other?
3. Any additions to the initial NMFS OLE comments provided to the Scallop PDT?

Part III: Other Measures (if time permits)

- Allow fishing in state waters after NGOM hard-TAC is reached
- Make turtle regulations consistent
- New AMs for northern WVP and modify AMs for GB and SNE/MA YT
- Revise “flaring bar” provision for turtle deflector dredge regulations

Any input from Enforcement Committee for Scallop Committee to consider?