

Massachusetts Sea Scallop Permit Counts and Landings Data 2010-2013  
 Camisa 8/21/2014

**Total Number of Permits Issued by Type**

PERMIT TYPE	2010	2011	2012	2013
SW Only	167	165	164	162
SW & LA	3	3	3	3
SW & IFQ (A)	29	29	25	25
SW & NGOM (B)	12	9	11	10
SW & Incidental (C)	19	20	20	16
Total Active	230	226	223	216
Dual Permit Total	63	61	59	54

Source: MADMF and NMFS Permitting

**Total State Waters Sea Scallop Harvest by Permit Category - Calendar Year, Live Lbs**

PERMIT TYPE	2010	2011	2012	2013
SW Only	1,365,073	2,021,463	1,855,161	1,681,241
SW & LA	0	0	0	0
SW & IFQ (A)	94,533	252,638	107,907	154,171
SW & NGOM (B)	0	0	4,206	18,284
SW & Incidental (C)	2,916	0	133	0
Total Catch	1,462,522	2,274,101	1,967,407	1,853,696
Dual Permit Total	97,449	252,638	112,246	172,455
%SW Harvest by Dual	6.7%	11.1%	5.7%	9.3%

Source: MA Trip Level Reports and NMFS VTR's

**Total State Waters Sea Scallop Harvest by Area - Calendar Year, Live Lbs**

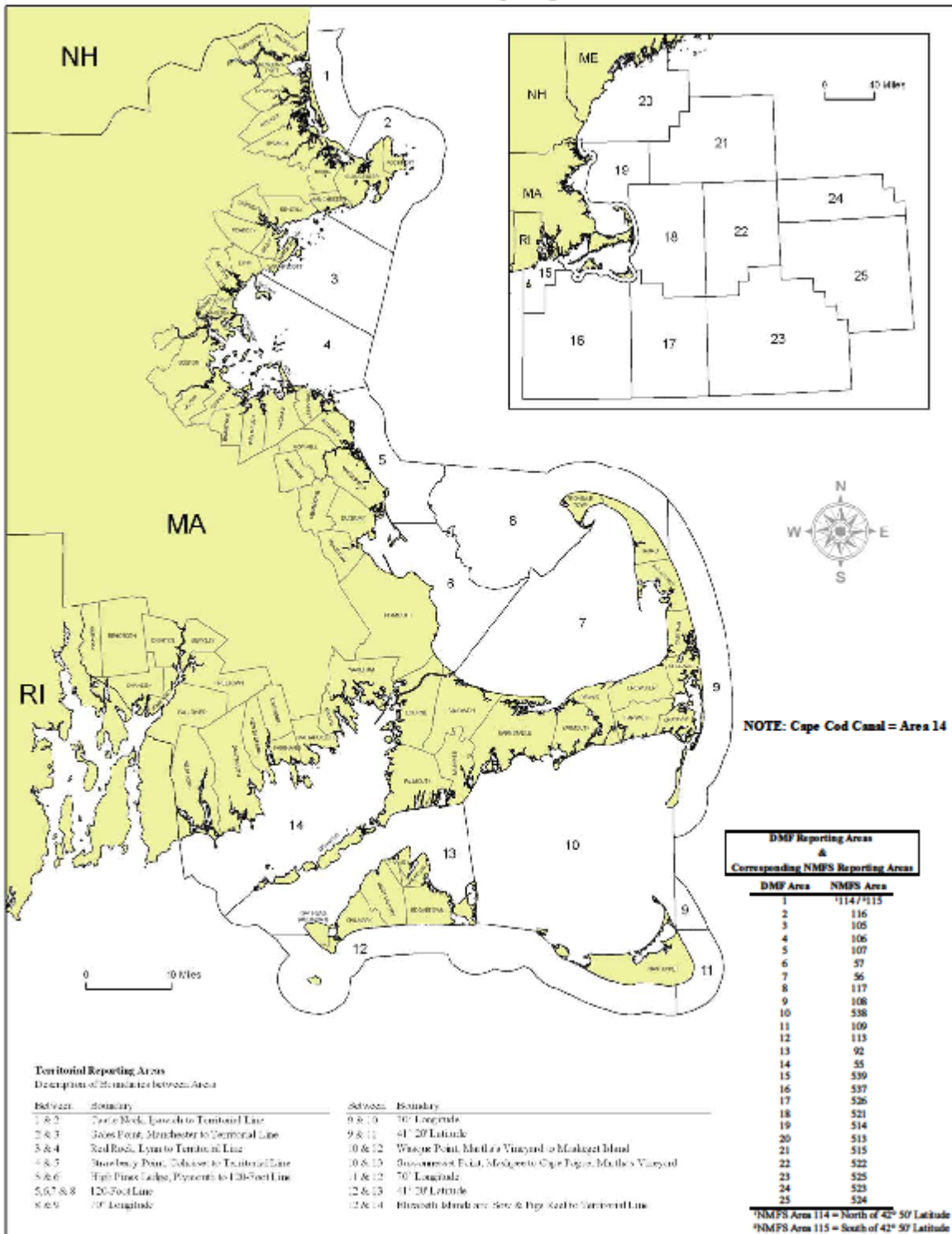
Area	2010	2011	2012	2013
1	12,537	52,584	2,207	57,752
2	0	825	5,331	72,968
3	25,967	***	17,580	***
4	***	9,794	***	***
5	48,202	65,567	110,884	95,480
6	89,973	93,661	50,212	77,918
7	335,380	409,327	222,926	320,603
8	791,576	1,212,361	1,312,009	1,023,271
9	149,156	412,655	230,693	166,764
10	***	9,417	***	***
11	0	0	0	0
12	0	0	***	***
13	0	6,673	0	***
14	128	***	0	***
<b>Total</b>	<b>1,462,521</b>	<b>2,274,101</b>	<b>1,967,408</b>	<b>1,853,697</b>

Source: MA Trip Level Reports & NMFS VTR's

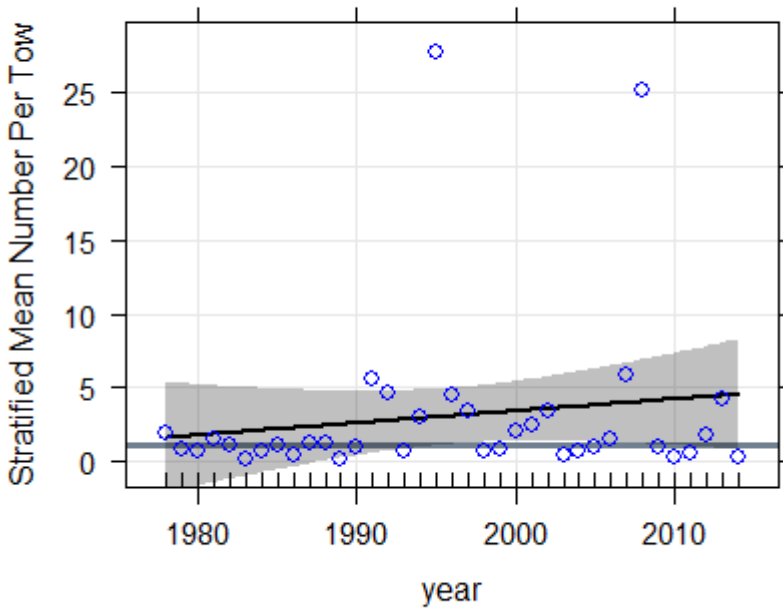
\*\*\* = Confidential

[See: http://www.mass.gov/eea/docs/dfg/dmf/commercialfishing/statarea.pdf](http://www.mass.gov/eea/docs/dfg/dmf/commercialfishing/statarea.pdf) for Map of Areas

**DMF Statistical Reporting Areas**

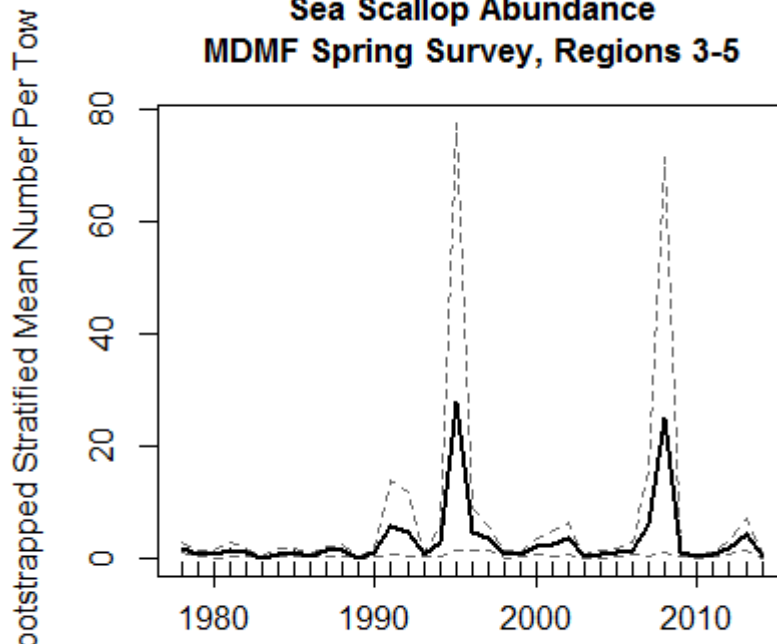


### Sea Scallop Abundance MDMF Spring Survey, Regions 3-5



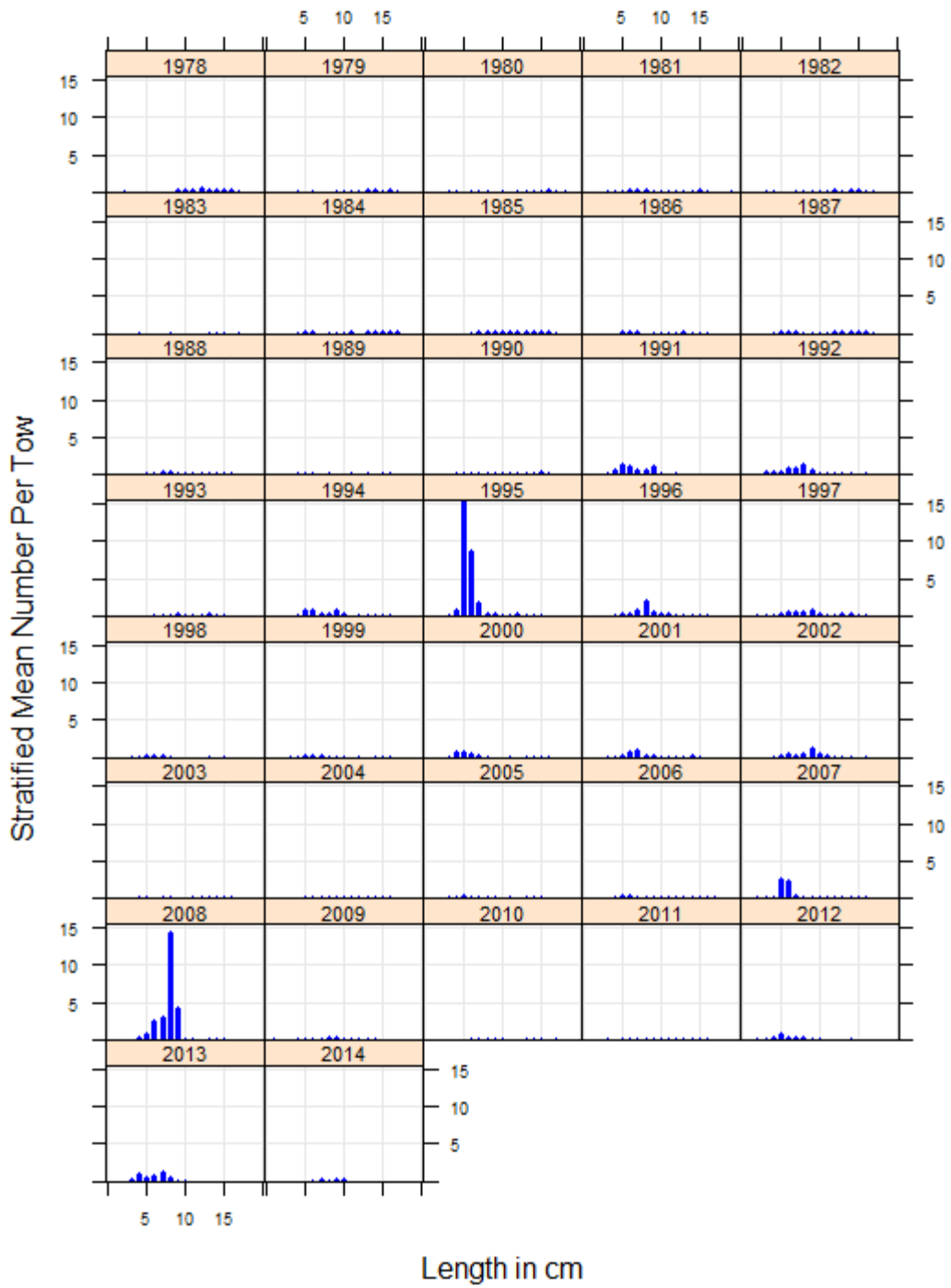
Black line: GAM fit.  
Grey line: timeseries median.

### Sea Scallop Abundance MDMF Spring Survey, Regions 3-5

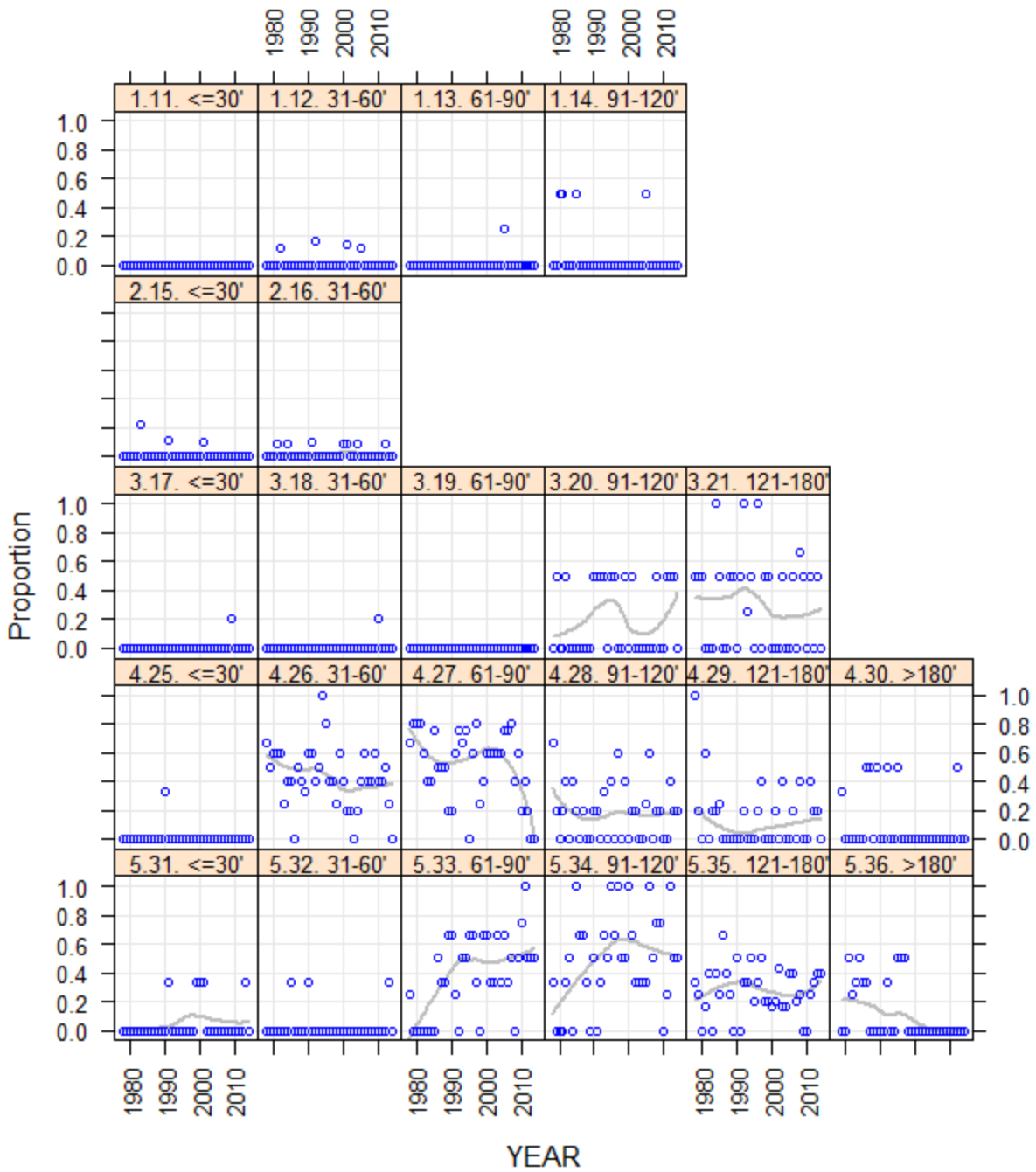


Dashed lines represent  
95% CI on Bootstrapped Mean

### Sea Scallop MDMF Spring Survey, Regions 3-5



### Sea Scallop Proportion of Positive Tows by Stratum MDMF Spring Survey 1978 - 2014, All Regions



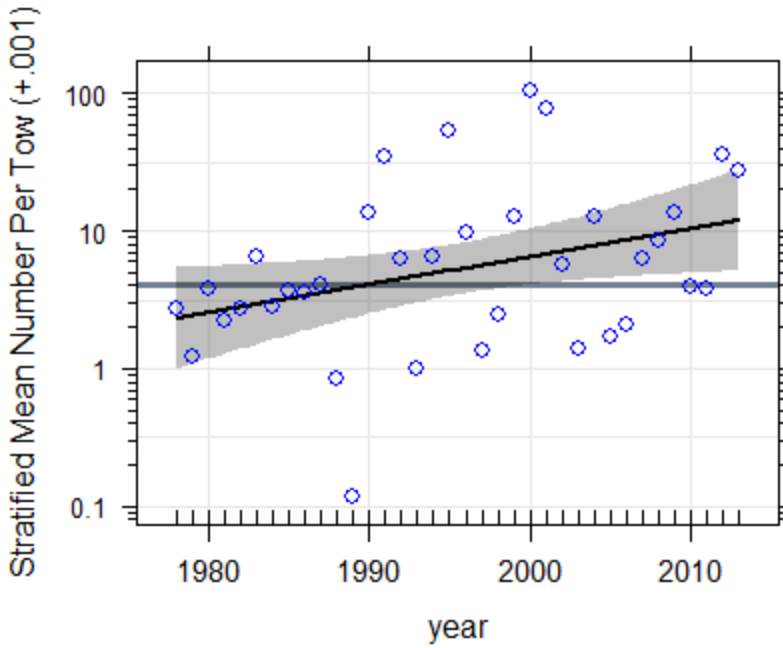
Solid line: Loess fit. Span=0.8, degree=2.  
Panel label indicates region.stratum.depth

## Sea Scallop

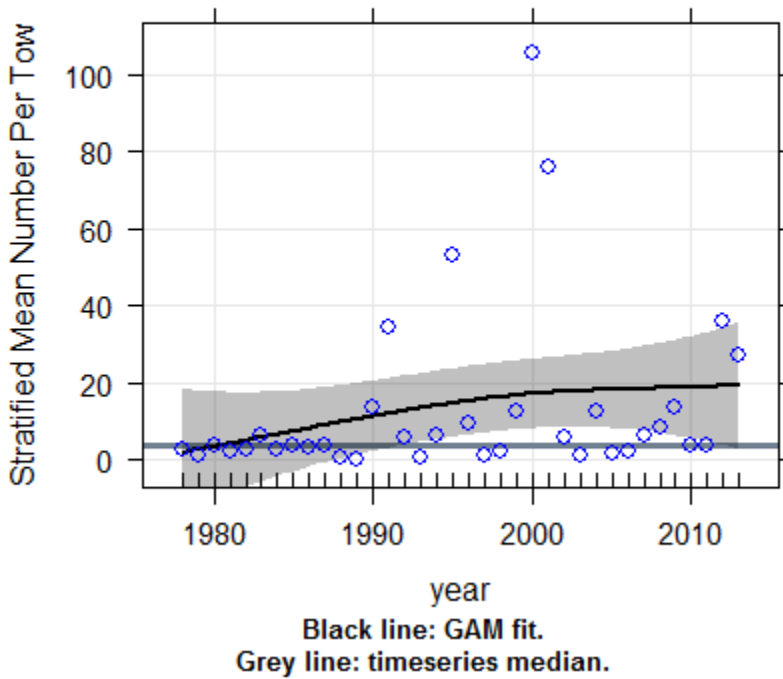
## MDMF Spring Survey, Regions 3-5

Year	Wt. per tow (kg)	Std.Err.Wt.	Number per tow	Std.Err.N
1978	0.59	0.18	1.95	0.60
1979	0.27	0.12	0.81	0.35
1980	0.31	0.18	0.72	0.34
1981	0.33	0.10	1.59	0.70
1982	0.36	0.19	1.08	0.46
1983	0.05	0.03	0.15	0.06
1984	0.24	0.11	0.79	0.45
1985	0.35	0.12	1.15	0.48
1986	0.10	0.05	0.50	0.18
1987	0.41	0.19	1.30	0.51
1988	0.19	0.11	1.29	0.64
1989	0.05	0.03	0.16	0.07
1990	0.31	0.20	1.02	0.53
1991	0.24	0.21	5.59	4.16
1992	0.30	0.19	4.70	3.66
1993	0.17	0.06	0.75	0.26
1994	0.22	0.12	3.01	1.63
1995	0.70	0.44	27.75	25.03
1996	0.42	0.15	4.50	2.35
1997	0.43	0.13	3.43	1.25
1998	0.03	0.02	0.69	0.43
1999	0.07	0.03	0.81	0.32
2000	0.09	0.02	2.14	0.92
2001	0.20	0.06	2.50	1.36
2002	0.27	0.16	3.49	1.91
2003	0.05	0.02	0.49	0.19
2004	0.18	0.10	0.69	0.36
2005	0.10	0.04	1.01	0.45
2006	0.22	0.08	1.58	0.66
2007	0.24	0.15	5.81	4.76
2008	1.41	1.27	25.17	22.89
2009	0.08	0.03	0.97	0.40
2010	0.06	0.04	0.30	0.13
2011	0.15	0.06	0.60	0.20
2012	0.04	0.02	1.84	0.80
2013	0.11	0.05	4.24	1.67
2014	0.02	0.01	0.33	0.14

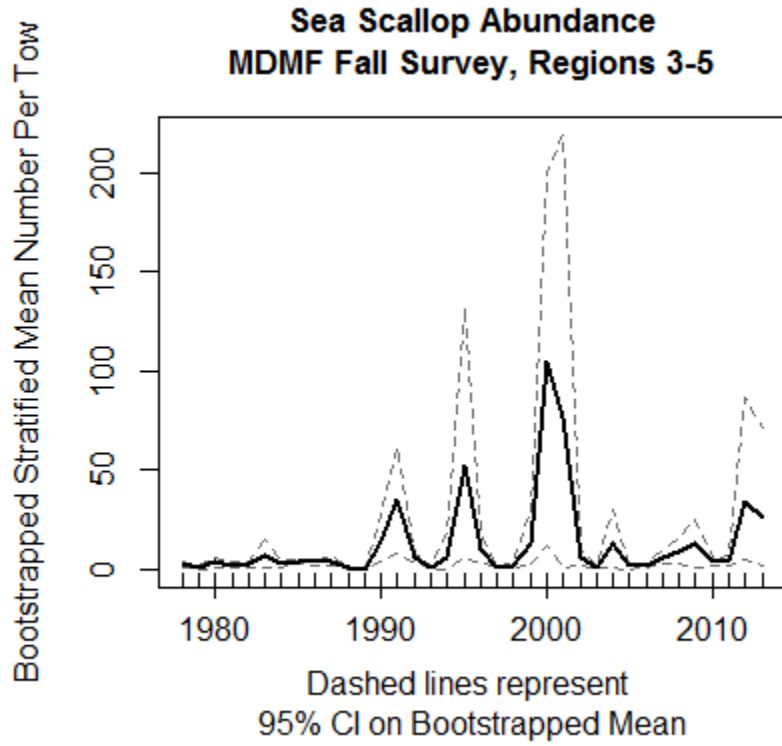
### Sea Scallop Abundance MDMF Fall Survey, Regions 3-5



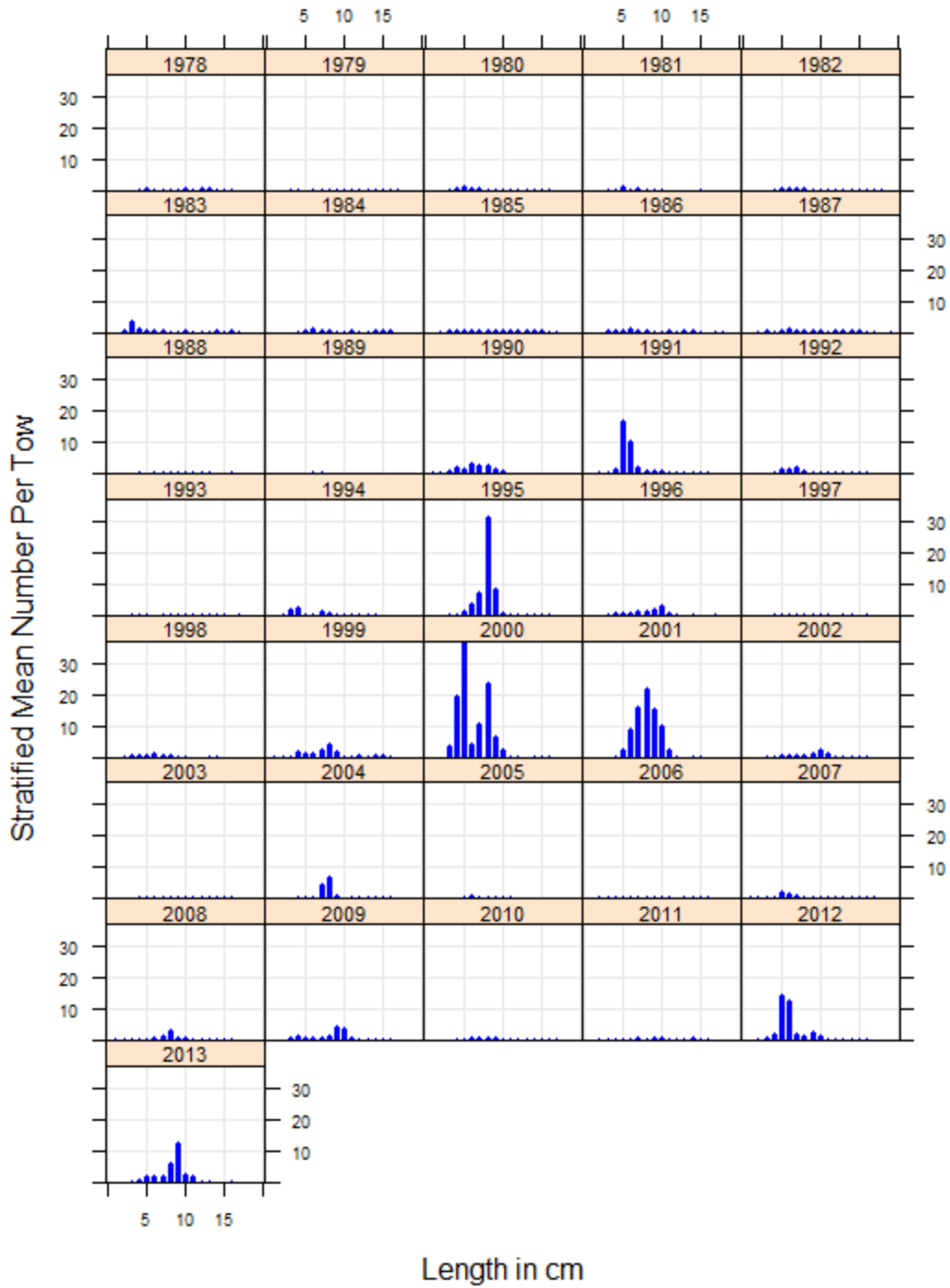
### Sea Scallop Abundance MDMF Fall Survey, Regions 3-5



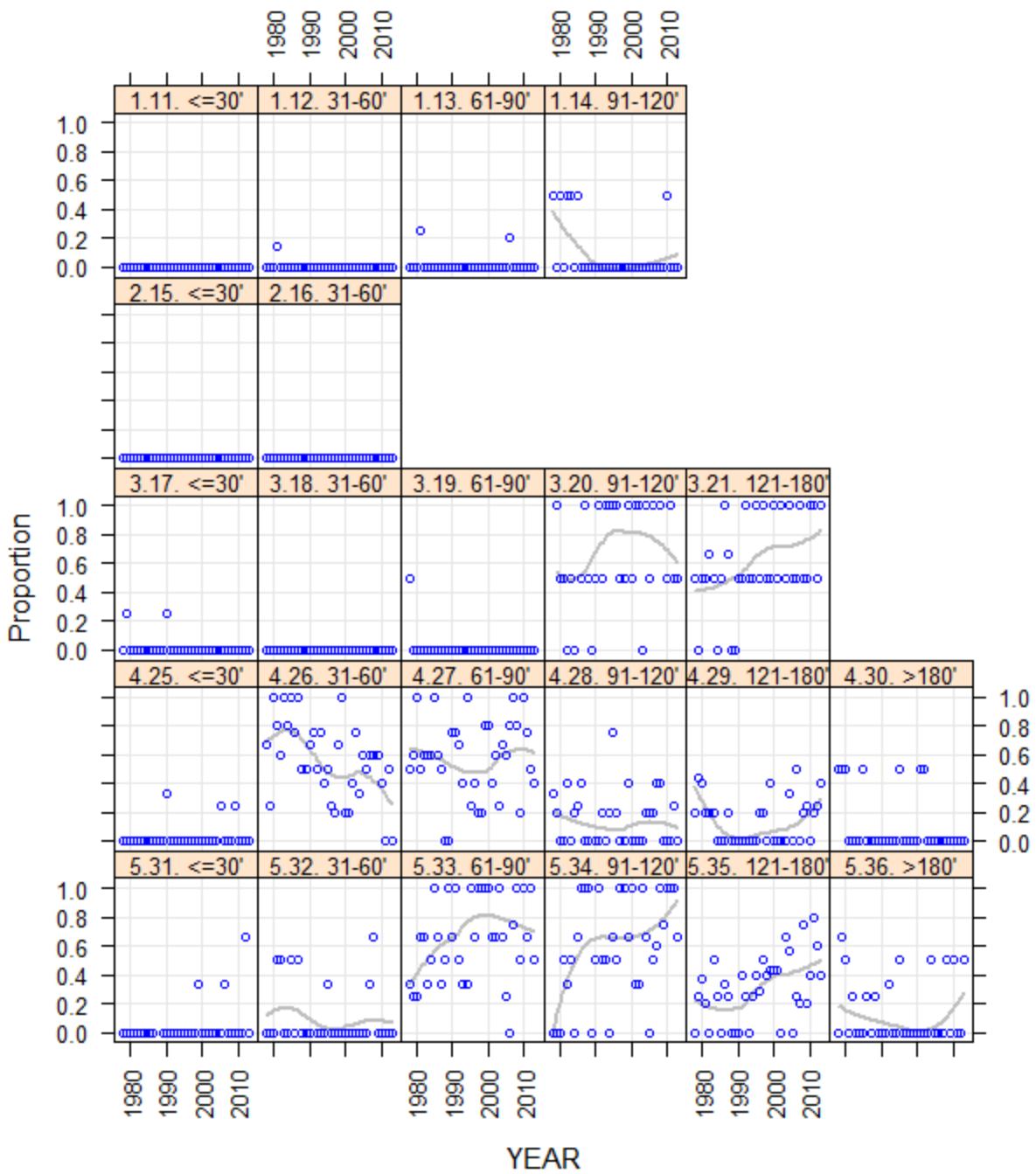




### Sea Scallop MDMF Fall Survey, Regions 3-5



### Sea Scallop Proportion of Positive Tows by Stratum MDMF Fall Survey 1978 - 2013, All Regions



Solid line: Loess fit. Span=0.8, degree=2.  
Panel label indicates region.stratum.depth

## Sea Scallop

## MDMF Fall Survey, Regions 3-5

Year	Wt. per tow (kg)	Std.Err.Wt.	Number per tow	Std.Err.N
1978	0.54	0.37	2.70	1.10
1979	0.30	0.15	1.23	0.55
1980	0.33	0.06	3.75	1.69
1981	0.07	0.03	2.26	1.27
1982	0.29	0.08	2.72	1.02
1983	0.36	0.07	6.54	4.48
1984	0.39	0.17	2.78	1.08
1985	0.61	0.11	3.69	0.72
1986	0.31	0.08	3.56	1.12
1987	0.52	0.22	4.05	1.59
1988	0.14	0.08	0.85	0.42
1989	0.00	0.00	0.12	0.05
1990	0.48	0.27	13.73	6.72
1991	1.13	0.47	34.60	22.11
1992	0.39	0.13	6.18	1.78
1993	0.16	0.07	0.99	0.52
1994	0.21	0.16	6.53	5.91
1995	3.40	2.75	53.37	42.05
1996	0.78	0.51	9.60	4.97
1997	0.19	0.05	1.34	0.33
1998	0.09	0.03	2.49	1.14
1999	0.79	0.35	12.59	8.60
2000	3.51	2.59	105.79	78.74
2001	4.83	4.64	75.88	72.75
2002	0.64	0.26	5.67	2.57
2003	0.29	0.11	1.38	0.45
2004	0.74	0.46	12.88	9.95
2005	0.09	0.07	1.70	0.83
2006	0.21	0.06	2.06	0.58
2007	0.30	0.10	6.27	2.20
2008	0.71	0.23	8.56	3.88
2009	1.10	0.86	13.59	11.80
2010	0.54	0.12	3.99	1.15
2011	0.62	0.19	3.85	1.59
2012	1.15	0.60	35.91	26.43
2013	1.95	1.82	27.02	22.85

