

Appendix 1

Fishing effort for Limited Access (LA) and Limited Access General Category (LAGC) Scallop Fisheries

1. Specifications
2. VTR by TMS by permit (2010-2014)
3. Estimate of VTR landings by permit and statistical area (using 1,000 pound per trip cut off) for 1996-2014

1. Specifications

Year	Action	DAS	AA trips	CA1	CAII	NLS	VB	HC	ETA	DMV	Poss Limit
1999	FW11	120	3	Closed	3 trips	Closed	Closed	Closed	N/A	N/A	10000
2000	FW12	120	6	2 trips	3 trips	1 trip	Closed	Closed	N/A	N/A	10000
2001	FW14	120	3 (MA)	Closed	Closed	Closed	3 trips		N/A	N/A	17000
2002	FW14	120	3 (MA)	Closed	Closed	Closed	3 trips		N/A	N/A	18000
2003	FW15	120	3 (MA)	Closed	Closed	Closed	3 trips		N/A	N/A	21000
2004	FW16 - GB AA allocations; A10 and emergency rule for others	42	7 (4 MA)	Closed	2 trips	1 trip		4 trips	Closed	N/A	18000
2005	FW16	40	5 (3 MA)	1 trip	1 trip	Closed		3 trips	Closed	N/A	18000
2006	FW18	52	5 + HC carryover (F18 also allowed vessels to exchange 2006 CA2 and NLS trips for ETA 2007 trips)	Closed	3 trips	2 trips		open for 2005 carryover trips	Closed	N/A	18000
2007	FW18/FW20	51	5 + HC carryover (F18 also allowed vessels to exchange 2006 CA2 and NLS trips for ETA 2007 trips)	1 trip	Closed	1 trip		open for 2005 carryover trips	3 trips	Closed (Jan 1, 2007)	18000
2008	FW19	35	5 (4 MA)	Closed	Closed	1 trip		Closed	4 trips	Closed	18000
2009	FW19	42	5 (4 MA)	Closed	1 trip	Closed		Closed	3 trips	1 trip	18000
2010	FW21	38	4 (3 MA)	Closed	Closed	1 trip		Closed	2 trips	1 trip	18000
2011	FW22	32	4 (2 MA)	1.5 trips	0.5 trips	Closed by emergency		1 trip	converted to open area	1 trip	18000
2012	FW22	34	4	1 trip*	1 trip	0.5 trips		1.5 trips	Closed (Dec 12, 2012, emergency action)	Closed by emergency (trips converted to CA1)	18000
2013	FW24	33	2	118 trips**	182 trips	116 trips		210 trips	Closed	Closed	13000
2014	FW25	31	2	Closed	197 trips	116 trips		Closed	Closed	313 trips (with potential for vessels to opt instead for 5 DAS)	12000

*1 trip after emergency action May 2012 (157 vessels get initial trip per FW22 and 156 get CA1 trip converted from initial DMV trip)

** FW25 then allows unused trips to be carried over to future year

2. VTR by TMS by permit (2010-2014)

The Scallop PDT summarized some fishing effort data as background for discussions of inshore scallop fishing activity. More work is planned using VMS data as well, but resources are limited.

VTR

- 2010-2014 – maps are shown per year and combined
- LA and LAGC
- Used # of trips as effort metric
- Used ALL trips, not just open areas
- Note that the scales differ for years and permit categories.
- For a ten minute square to light up there must be at least three unique permits with a trip in that square.

VTR locations are considered less accurate since they generally only have one self-reported location per trip, but are easier to work with and go back farther in time.

The bathymetry shown is the 60 and 120m contour, which translates to ~30 and 60 fathoms respectively. Scallop access areas are shown in green, and change color to red when they are closed in a particular fishing year. Statistical areas are shown in light grey.

Figure 1 – LA VTR trips 2010-2014 combined

LA VTR Trips 2010-2014 (minimum 3 permits/cell)

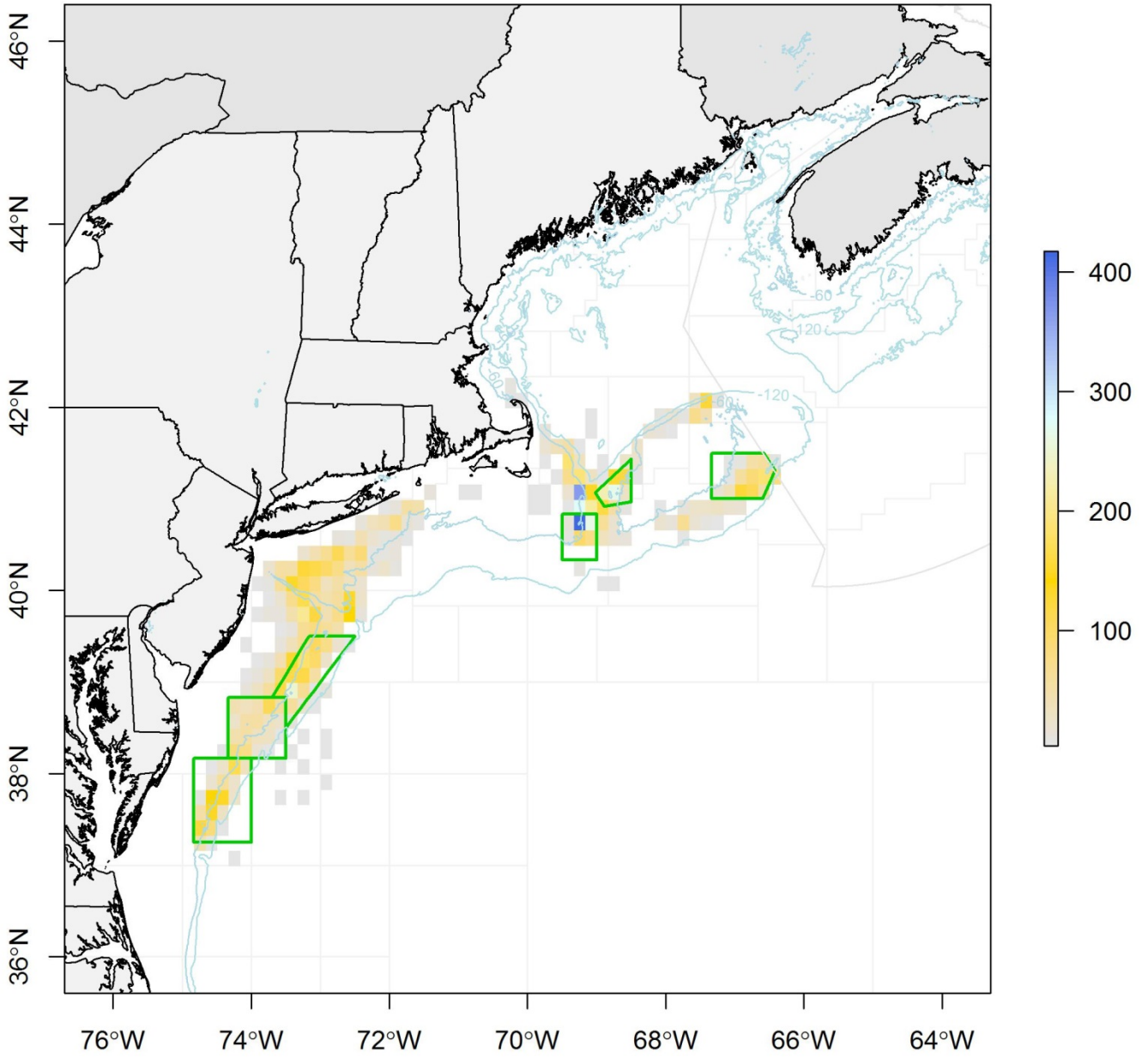


Figure 2 – LAGC VTR trips 2010-2014 combined

LAGC VTR Trips 2010-2014 (minimum 3 permits/cell)

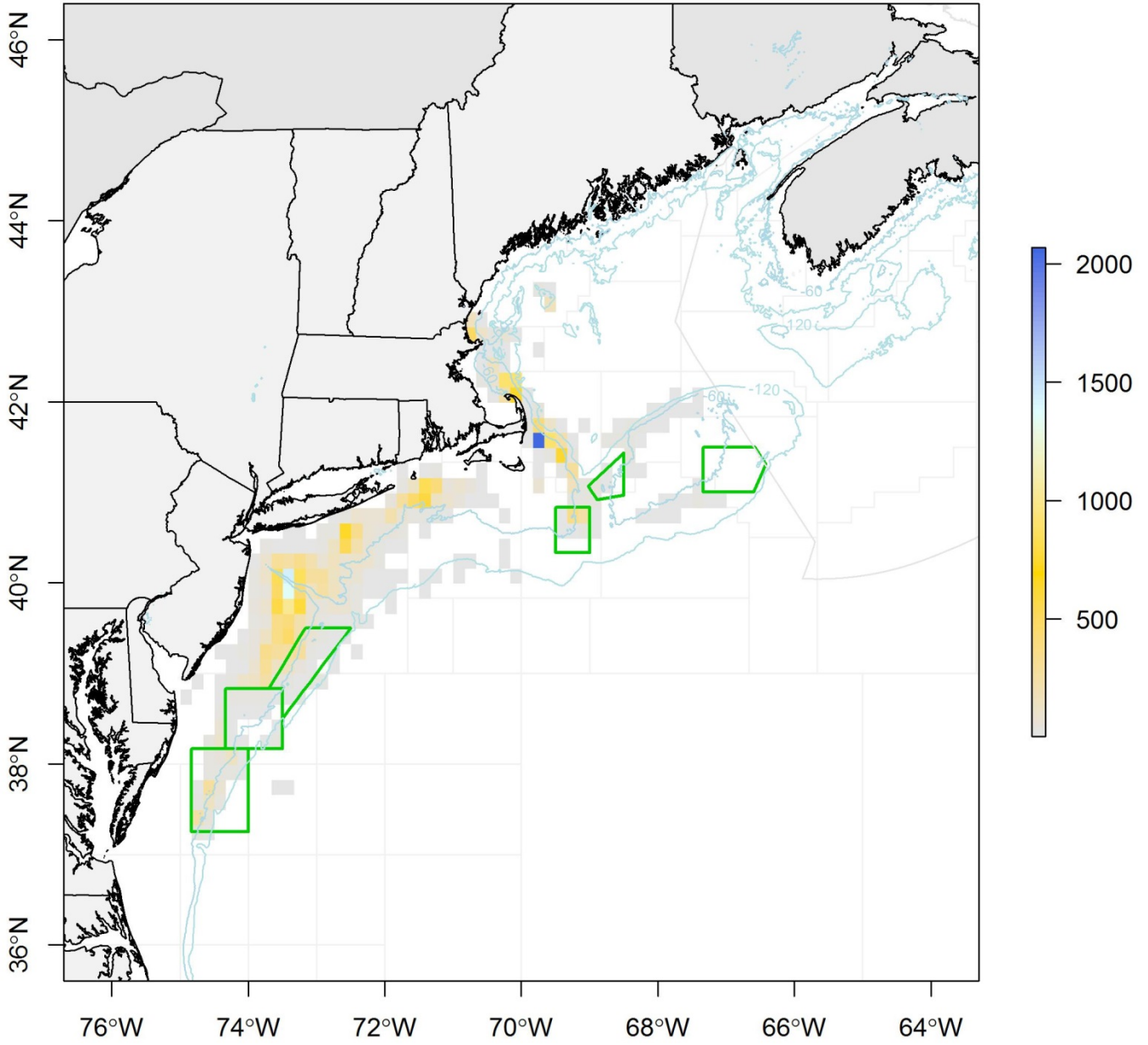


Figure 3 – Summary of VTR trips for LA and LAGC vessels (2014)

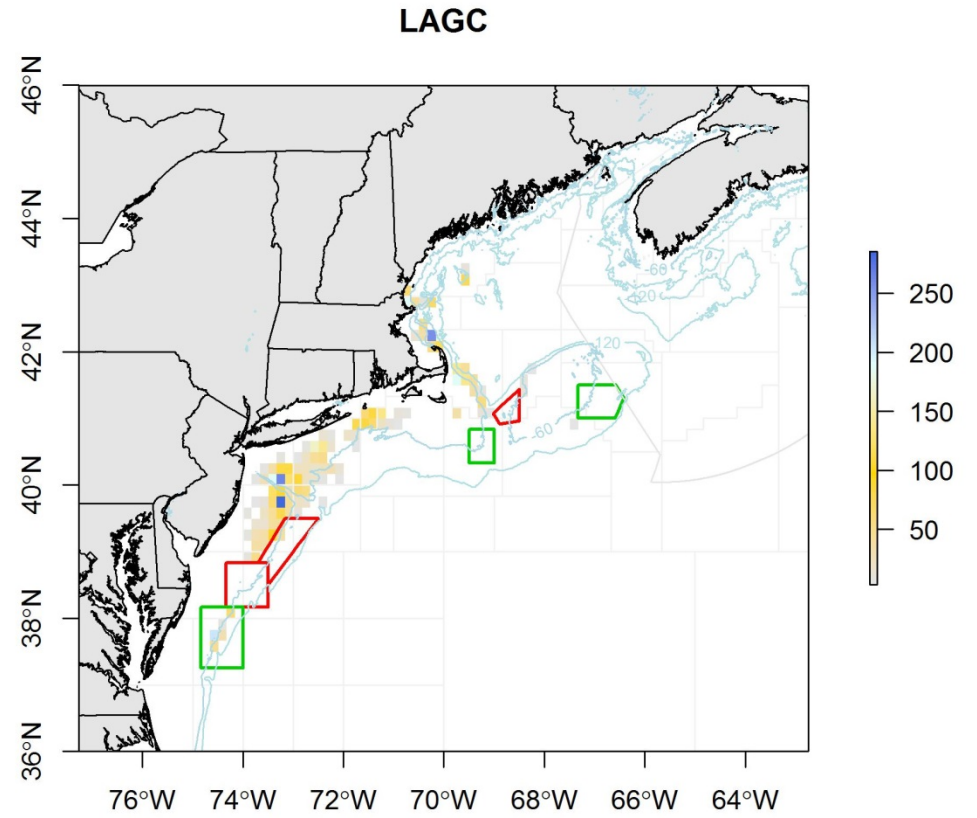
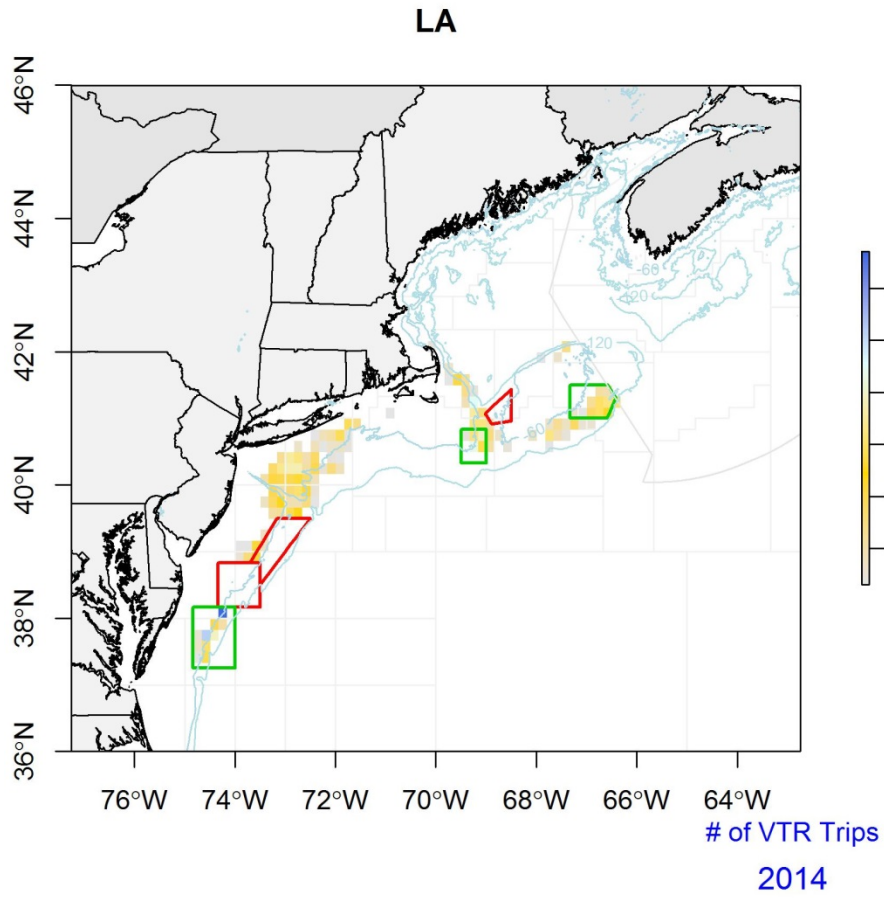


Figure 4 – Summary of VTR trips for LA and LAGC vessels (2013)

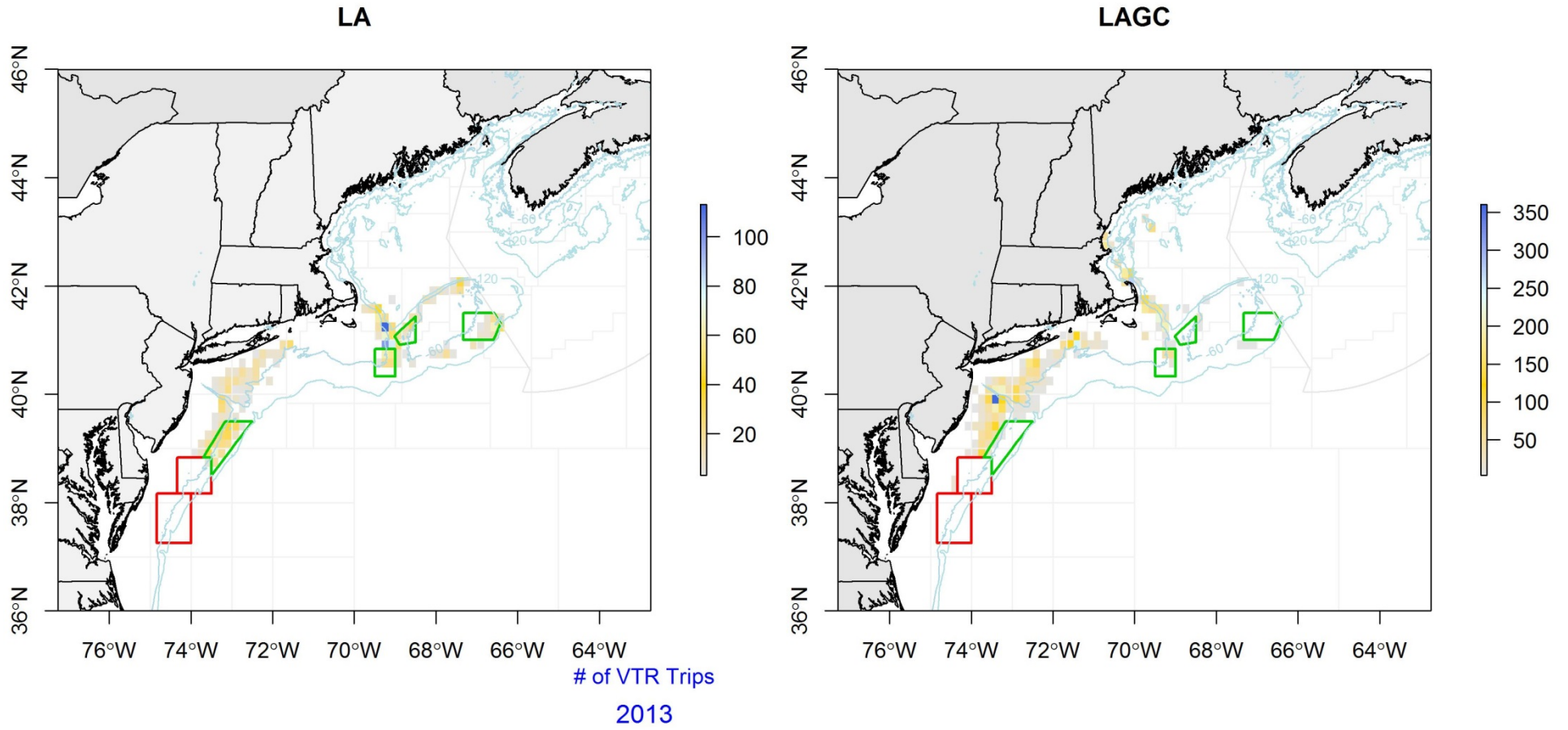


Figure 5 – Summary of VTR trips for LA and LAGC vessels (2012)

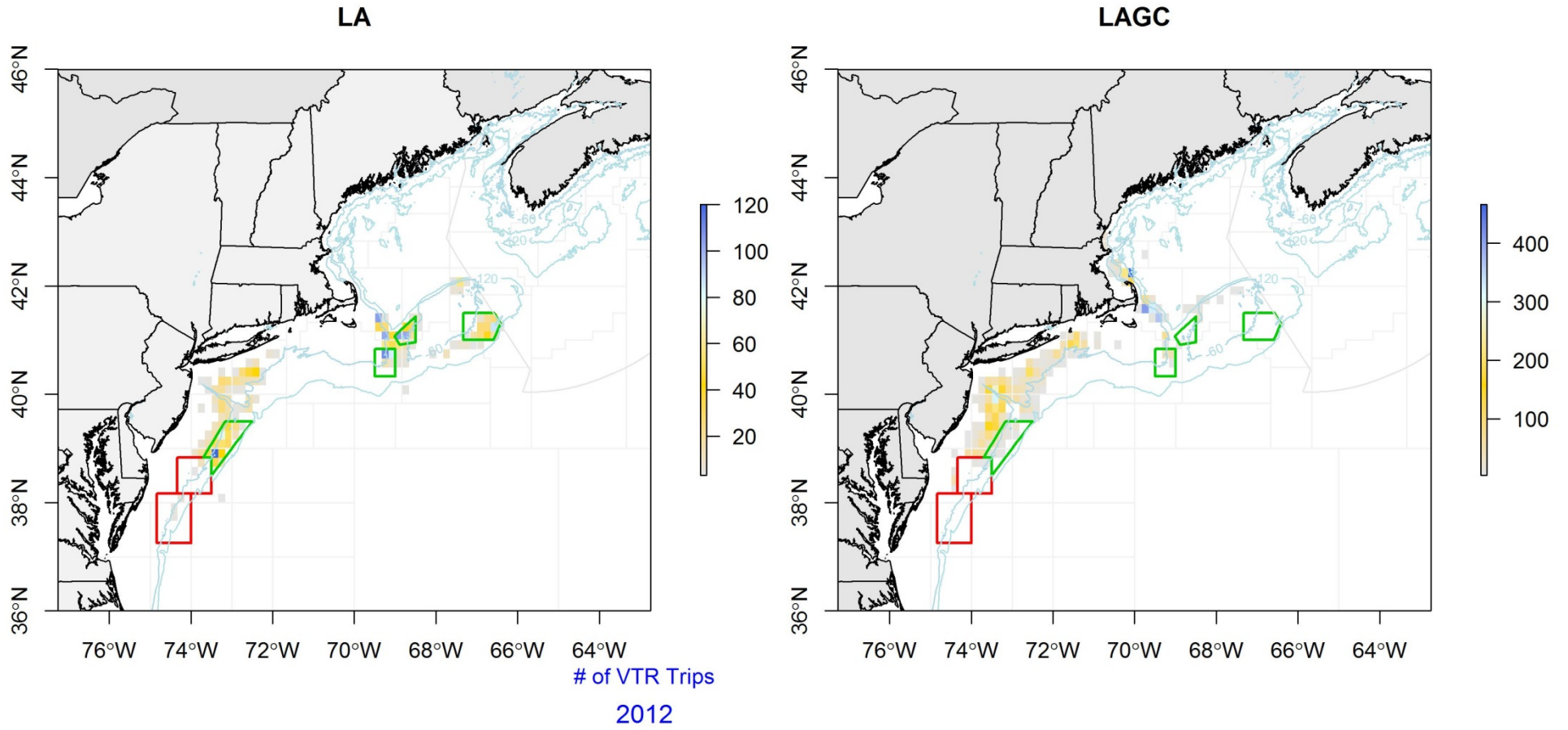


Figure 6 – Summary of VTR trips for LA and LAGC vessels (2011)

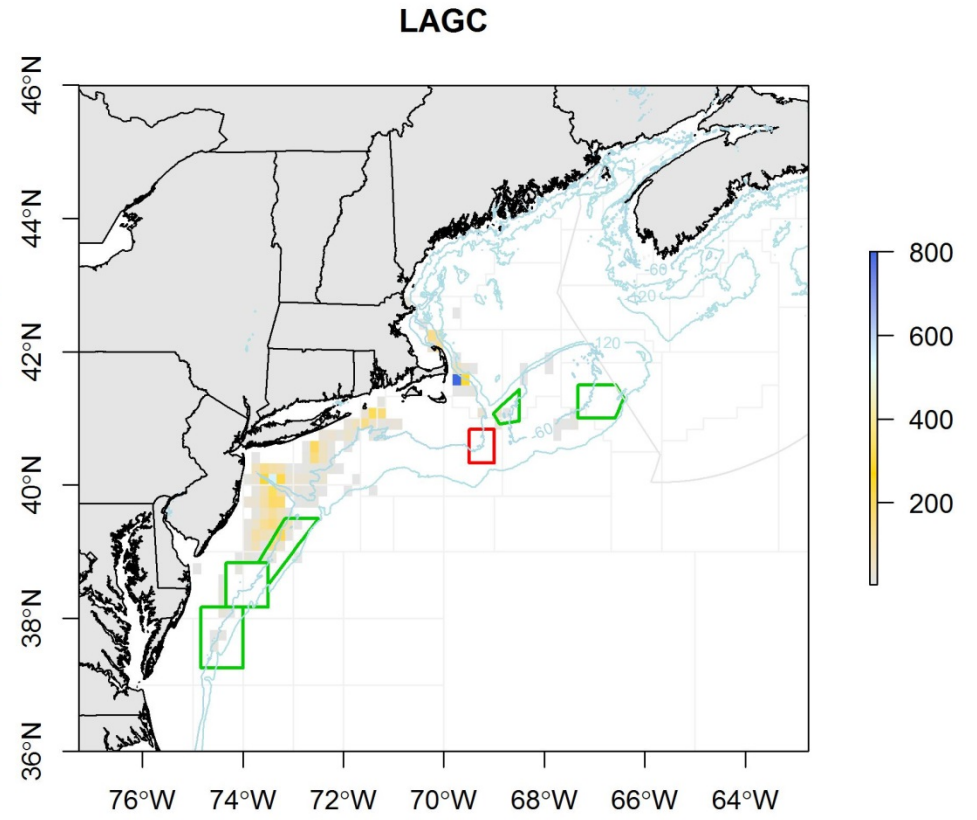
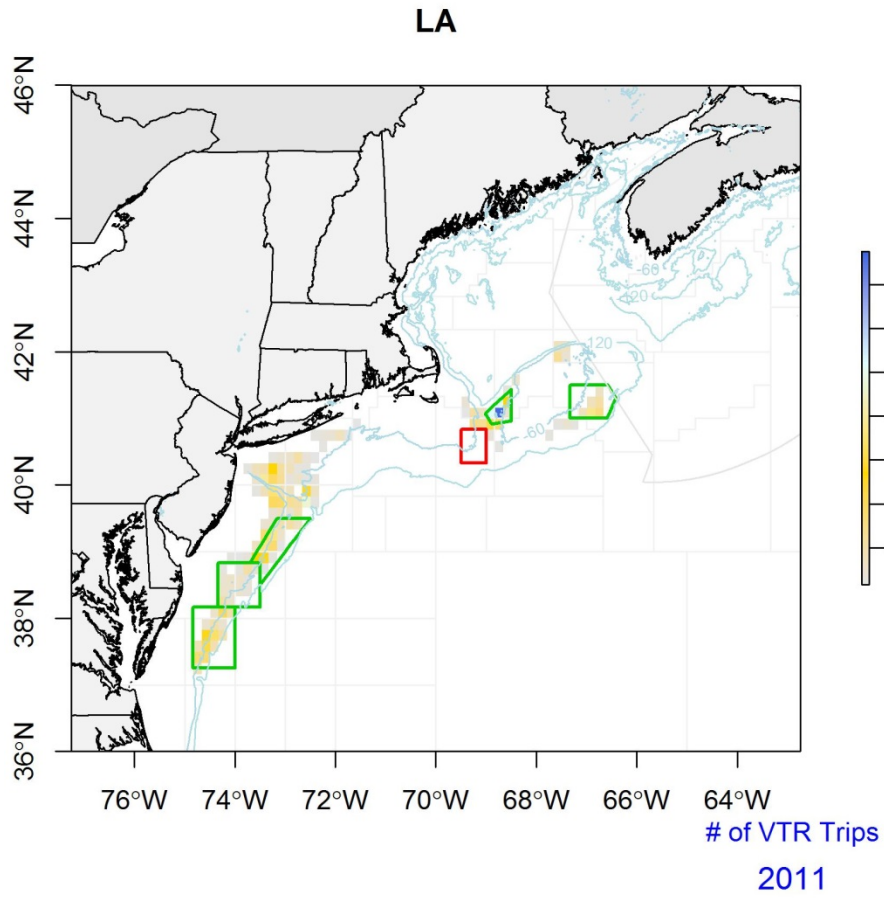
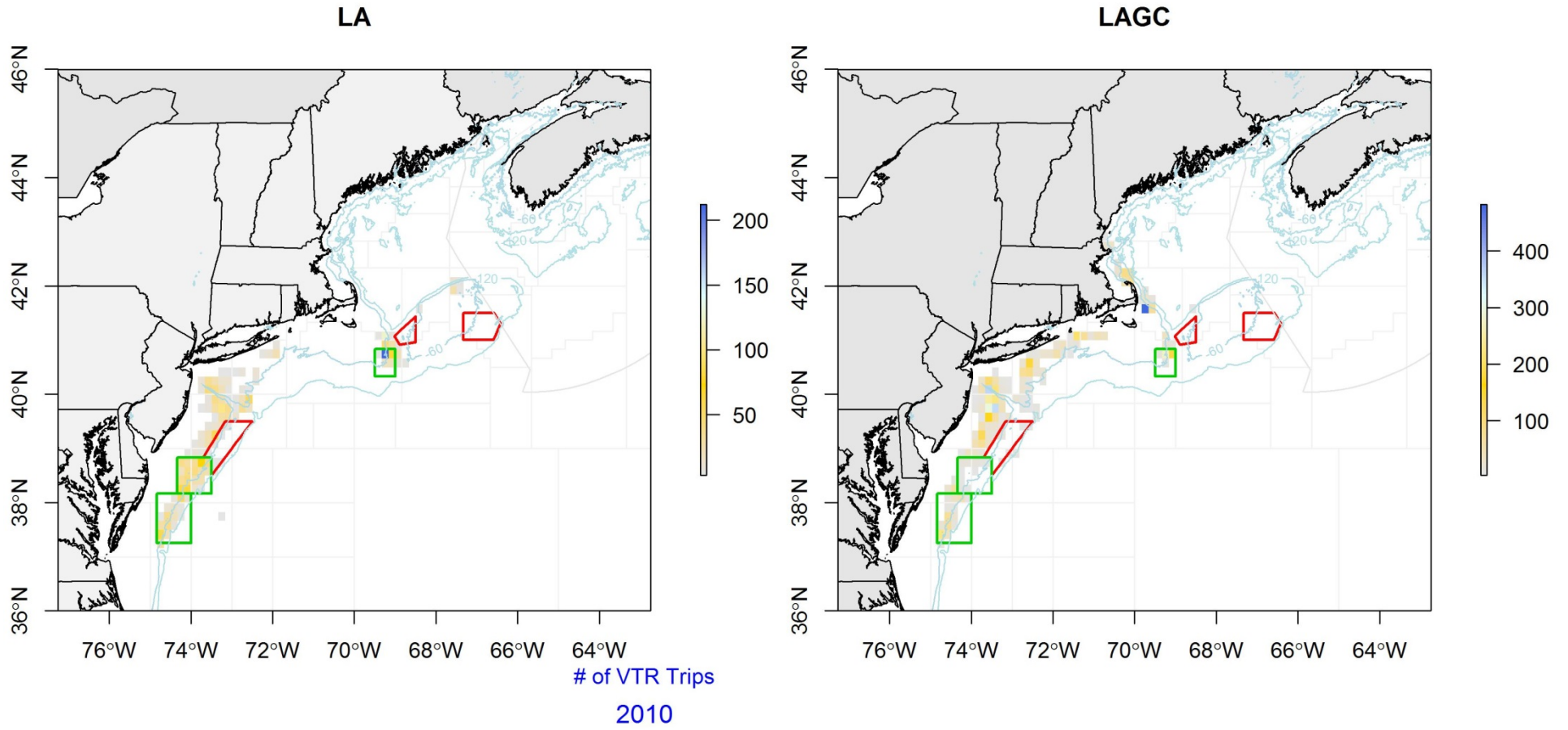


Figure 7 – Summary of VTR trips for LA and LAGC vessels (2010)



3. Estimate of VTR landings by permit and statistical area (using 1,000 pound per trip cut off) for 1996-2014

Tables and Figures below with VTR catch by statistical area for areas that have over 10 million pounds of scallop landings for all years combined between 1996-2014.

All trips over 1,000 pounds considered LA – therefore some LA catch from trips under 1,000 pounds may be considered LAGC in earlier years.

Figure 8 – Statistical areas that contain a minimum of 10 million pounds of more of total catch from 1996-2014

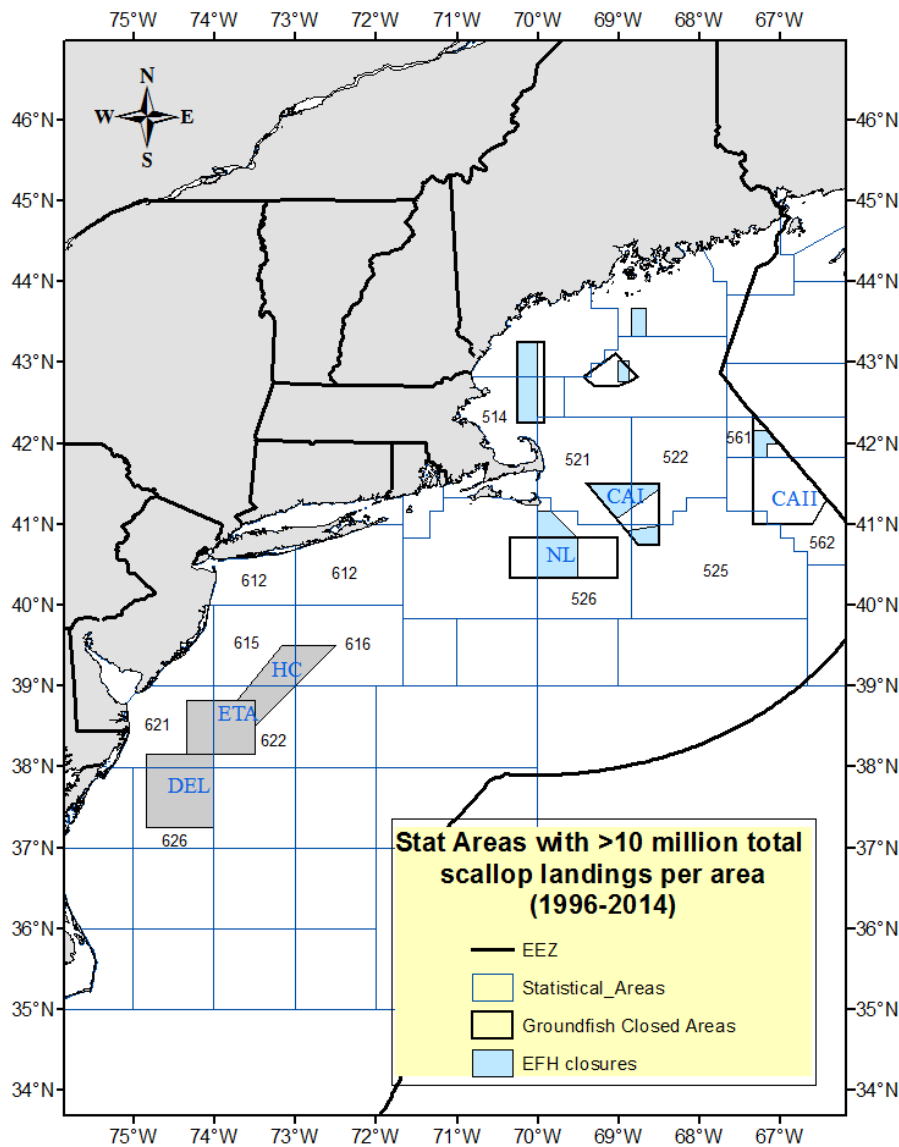


Table 1. Scallop landings by area (Limited access trips only)

Fishyear	514	521	522	525	526	561	562	612	613	615	616	621	622	626	All Areas
1996	599,040	2,119,023	128,015	793,677	499,878	432,225	105,527	150,790	1,156,078	1,105,660	2,011,729	726,738	1,485,455	934,084	12,247,919
1997	516,041	2,383,617	235,664	838,420	772,367	656,552	87,260	414,542	1,513,580	1,150,839	1,155,879	397,688	759,463	420,432	11,302,344
1998	81,379	1,518,460	466,225	765,771	841,628	551,989	168,684	288,866	1,148,135	665,588	451,423	1,013,718	577,464	1,064,545	9,603,876
1999	45,035	1,469,645	876,272	1,088,591	1,316,492	651,617	5,814,114	142,194	928,926	2,265,468	645,040	1,809,734	1,592,622	1,791,664	20,437,414
2000	8,884	1,752,500	3,798,013	1,217,503	2,954,009	477,810	1,739,170	460,317	2,704,084	5,235,011	2,448,301	3,599,879	2,204,187	3,729,338	32,329,006
2001	452,686	3,731,660	994,340	1,410,252	2,545,044	636,266	124,096	491,540	3,854,590	8,809,280	4,616,113	5,261,014	8,840,913	2,670,992	44,438,784
2002	117,044	3,240,566	704,851	1,079,746	6,787,294	301,704	51,516	945,238	3,757,605	9,674,758	2,032,950	9,266,794	5,709,224	4,746,570	48,415,860
2003	47,882	2,381,155	1,271,258	1,682,877	2,018,335	2,344,288	300,686	1,469,071	2,685,686	9,064,731	4,634,131	14,041,098	5,009,844	6,151,165	53,102,207
2004	23,097	268,724	300,534	843,381	3,868,070	249,930	4,830,632	771,590	939,245	10,377,406	8,156,201	11,663,238	8,527,588	7,944,363	58,763,999
2005	1,926	1,164,398	6,233,096	2,933,090	2,953,246	362,828	5,483,101	2,202,026	2,798,808	8,255,336	5,329,835	2,657,005	3,090,560	1,167,786	44,633,040
2006	24,513	4,886,803	1,116,096	4,060,217	12,167,648	2,060,384	12,505,364	960,969	1,935,105	2,829,517	3,787,500	758,329	627,667	1,120,813	48,840,925
2007	14,574	2,588,091	5,422,682	3,224,926	8,206,332	1,083,062	526,977	1,231,030	2,570,334	6,213,195	4,399,910	11,790,389	7,363,632	18,304	54,653,438
2008	27,835	936,129	209,695	3,335,330	7,910,925	772,843	138,523	2,479,340	733,112	4,771,849	1,214,310	13,978,893	10,863,742	125,297	47,497,822
2009	7,831	735,320	745,549	4,421,278	3,842,142	1,683,451	3,097,427	3,378,000	1,170,460	6,920,079	2,031,859	6,862,859	13,725,262	3,185,658	51,807,176
2010	17,083	3,684,152	279,678	366,471	7,420,880	1,137,887	26,000	4,325,966	2,683,285	13,413,617	2,580,734	5,307,466	5,890,238	4,866,628	52,000,085
2011	25,636	3,266,538	5,754,704	1,850,603	2,537,218	1,654,459	2,548,766	6,993,750	3,700,226	9,388,899	6,827,292	1,462,575	2,070,763	4,523,960	52,605,388
2012	15,651	9,045,729	2,828,644	2,554,339	7,719,015	2,621,205	5,299,556	2,715,133	5,256,937	8,461,998	1,094,989	284,232	3,737,357	98,174	51,732,959
2013	231,131	9,239,329	1,510,116	1,971,038	7,270,492	1,842,389	2,555,457	1,861,319	3,094,336	3,923,194	683,912	6,334	1,192,801		35,381,848
2014	68,618	2,470,501	279,042	2,524,423	2,818,206	349,068	2,306,880	1,997,250	7,225,101	2,191,513	2,707,162	943,042	557,374	2,009,482	28,447,662
Grand Total	2,325,888	56,882,338	33,154,474	36,961,933	84,449,220	19,869,957	47,709,736	33,278,930	49,855,632	114,717,938	56,809,270	91,831,025	83,826,156	46,569,254	

Table 2. Scallop landings by area (Limited access general category trips only)

FishY	514	521	522	525	526	561	562	612	613	615	616	621	622	626	All Areas
1996	206,653	59,940	15,172	28,381	6,989	7,813		10,778	44,703	60,601	39,004	13,500	32,308	53,687	579,529
1997	318,812	51,223	8,452	15,620	8,649	6,374	11,706	31,763	65,131	50,552	27,097	28,474	34,890	25,917	684,660
1998	160,726	83,300	12,698	70,999	27,124	19,354	14,470	93,295	94,742	94,695	30,766	86,417	26,388	149,989	964,962
1999	88,587	42,183	11,436	19,314	15,453	4,008	42,317	103,358	76,939	158,244	22,317	80,164	78,177	91,277	833,774
2000	90,831	56,271	8,701	19,890	5,954	3,407	21,098	113,148	136,527	137,230	22,815	73,861	35,613	35,326	760,672
2001	510,503	324,389	12,006	16,205	8,011	5,423	1,264	117,800	230,438	263,479	19,121	68,167	51,695	30,594	1,659,094
2002	367,718	134,418	7,879	15,758	26,103	4,426		139,218	70,525	292,399	23,428	91,855	37,363	82,134	1,293,224
2003	298,164	360,242	5,094	4,523	4,522	3,757	2,640	162,411	70,893	414,440	36,261	180,231	51,676	214,926	1,809,780
2004	116,861	584,565	7,143	31,856	23,845	1,483	83,535	270,729	201,840	936,024	46,801	578,375	116,994	382,227	3,382,279
2005	318,393	812,681	55,772	74,958	101,706		14,493	620,407	805,181	1,526,900	73,339	2,085,750	310,761	1,054,991	7,855,331
2006	213,343	801,335	30,978	67,833	257,806	8,150	30,841	690,972	568,425	1,337,690	78,384	1,505,604	205,376	999,352	6,796,089
2007	126,073	585,103	88,517	35,189	168,821	5,875	5,279	902,730	394,535	1,431,070	108,958	1,024,025	355,320	14,418	5,245,913
2008	71,578	164,715	8,599	16,783	207,958	6,274		1,118,118	107,166	908,194	15,352	1,213,107	199,280	5,286	4,042,410
2009	76,915	234,182	10,306	12,878	14,334	6,155	7,061	1,189,343	83,069	1,090,196	12,591	748,350	541,425	101,503	4,128,308
2010	181,716	284,310	2,414	5,138	214,560	2,034		355,579	141,977	824,492	17,844	159,441	74,846	235,351	2,499,702
2011	248,048	615,013	15,133	9,103	21,322	1,136	3,630	738,379	126,743	976,140	43,520	47,482	47,984	34,422	2,928,056
2012	573,455	751,567	19,430	2,373	33,445	1,101	11,353	553,665	188,872	945,656	60,938	34,367	98,508	4,677	3,279,407
2013	413,386	540,358	15,051	3,676	74,600	3,169	7,391	454,120	214,843	682,379	50,743	7,901	79,744		2,547,361
2014	317,167	315,478	4,813	4,740	40,114		8,463	516,362	226,524	553,439	45,795	60,279	32,342	199,050	2,324,566
Grand Total	4,698,926	6,801,274	339,595	455,217	1,261,315	89,939	265,541	8,182,175	3,849,072	12,683,820	775,074	8,087,349	2,410,690	3,715,128	

Table 3. Scallop landings by area (All trips)

FishY	514	521	522	525	526	561	562	612	613	615	616	621	622	626	All Areas
1996	805,693	2,178,963	143,187	822,058	506,867	440,038	105,527	161,568	1,200,781	1,166,261	2,050,733	740,238	1,517,763	987,771	12,827,448
1997	834,853	2,434,840	244,116	854,040	781,016	662,926	98,966	446,305	1,578,711	1,201,391	1,182,976	426,162	794,353	446,349	11,987,004
1998	242,105	1,601,760	478,923	836,770	868,752	571,343	183,154	382,161	1,242,877	760,283	482,189	1,100,135	603,852	1,214,534	10,568,838
1999	133,621	1,511,828	887,708	1,107,905	1,331,945	655,625	5,856,431	245,552	1,005,865	2,423,712	667,357	1,889,898	1,670,799	1,882,941	21,271,188
2000	99,715	1,808,771	3,806,714	1,237,393	2,959,963	481,217	1,760,268	573,465	2,840,611	5,372,241	2,471,116	3,673,740	2,239,800	3,764,664	33,089,678
2001	963,188	4,056,049	1,006,346	1,426,457	2,553,055	641,689	125,360	609,340	4,085,028	9,072,759	4,635,234	5,329,181	8,892,608	2,701,585	46,097,879
2002	484,762	3,374,984	712,730	1,095,504	6,813,397	306,130	51,516	1,084,456	3,828,130	9,967,157	2,056,378	9,358,649	5,746,587	4,828,704	49,709,083
2003	346,046	2,741,398	1,276,352	1,687,400	2,022,857	2,348,045	303,326	1,631,482	2,756,579	9,479,171	4,670,392	14,221,329	5,061,520	6,366,091	54,911,988
2004	139,958	853,289	307,677	875,237	3,891,915	251,413	4,914,167	1,042,319	1,141,085	11,313,430	8,203,002	12,241,613	8,644,582	8,326,590	62,146,278
2005	320,319	1,977,079	6,288,868	3,008,048	3,054,952	362,828	5,497,594	2,822,433	3,603,989	9,782,236	5,403,174	4,742,755	3,401,321	2,222,777	52,488,371
2006	237,856	5,688,138	1,147,074	4,128,050	12,425,454	2,068,534	12,536,205	1,651,941	2,503,530	4,167,207	3,865,884	2,263,933	833,043	2,120,165	55,637,014
2007	140,647	3,173,194	5,511,199	3,260,115	8,375,153	1,088,937	532,256	2,133,760	2,964,869	7,644,265	4,508,868	12,814,414	7,718,952	32,722	59,899,350
2008	99,413	1,100,844	218,294	3,352,113	8,118,883	779,117	138,523	3,597,458	840,277	5,680,043	1,229,662	15,191,999	11,063,022	130,583	51,540,232
2009	84,746	969,502	755,855	4,434,156	3,856,476	1,689,606	3,104,488	4,567,343	1,253,530	8,010,275	2,044,450	7,611,209	14,266,688	3,287,161	55,935,484
2010	198,799	3,968,462	282,092	371,609	7,635,440	1,139,921	26,000	4,681,545	2,825,261	14,238,109	2,598,578	5,466,908	5,965,084	5,101,979	54,499,787
2011	273,684	3,881,551	5,769,837	1,859,706	2,558,540	1,655,595	2,552,396	7,732,129	3,826,969	10,365,039	6,870,812	1,510,057	2,118,747	4,558,382	55,533,444
2012	589,105	9,797,296	2,848,074	2,556,712	7,752,460	2,622,306	5,310,909	3,268,798	5,445,809	9,407,654	1,155,927	318,599	3,835,865	102,851	55,012,365
2013	644,517	9,779,687	1,525,167	1,974,714	7,345,092	1,845,558	2,562,848	2,315,439	3,309,179	4,605,573	734,655	14,235	1,272,545	-	37,929,209
2014	385,785	2,785,979	283,855	2,529,163	2,858,320	349,068	2,315,343	2,513,612	7,451,625	2,744,952	2,752,957	1,003,321	589,716	2,208,532	30,772,228
Grand Total	7,024,814	63,683,612	33,494,069	37,417,150	85,710,536	19,959,896	47,975,277	41,461,105	53,704,704	127,401,758	57,584,344	99,918,374	86,236,846	50,284,382	

Areas >10 million pounds 1996-2014 (VTR landings)



Table 4. Share of LAGC scallop landings in total scallop landings in each area (% of area total)

Areas that have a change in recent years compared to % of landings have been highlighted

FY	514	521	522	525	526	561	562	612	613	615	616	621	622	626	All areas
1996	26%	3%	11%	3%	1%	2%	0%	7%	4%	5%	2%	2%	2%	5%	5%
1997	38%	2%	3%	2%	1%	1%	12%	7%	4%	4%	2%	7%	4%	6%	6%
1998	66%	5%	3%	8%	3%	3%	8%	24%	8%	12%	6%	8%	4%	12%	9%
1999	66%	3%	1%	2%	1%	1%	1%	42%	8%	7%	3%	4%	5%	5%	4%
2000	91%	3%	0%	2%	0%	1%	1%	20%	5%	3%	1%	2%	2%	1%	2%
2001	53%	8%	1%	1%	0%	1%	1%	19%	6%	3%	0%	1%	1%	1%	4%
2002	76%	4%	1%	1%	0%	1%	0%	13%	2%	3%	1%	1%	1%	2%	3%
2003	86%	13%	0%	0%	0%	0%	1%	10%	3%	4%	1%	1%	1%	3%	3%
2004	83%	69%	2%	4%	1%	1%	2%	26%	18%	8%	1%	5%	1%	5%	5%
2005	99%	41%	1%	2%	3%	0%	0%	22%	22%	16%	1%	44%	9%	47%	15%
2006	90%	14%	3%	2%	2%	0%	0%	42%	23%	32%	2%	67%	25%	47%	12%
2007	90%	18%	2%	1%	2%	1%	1%	42%	13%	19%	2%	8%	5%	44%	9%
2008	72%	15%	4%	1%	3%	1%	0%	31%	13%	16%	1%	8%	2%	4%	8%
2009	91%	24%	1%	0%	0%	0%	0%	26%	7%	14%	1%	10%	4%	3%	7%
2010	91%	7%	1%	1%	3%	0%	0%	8%	5%	6%	1%	3%	1%	5%	5%
2011	91%	16%	0%	0%	1%	0%	0%	10%	3%	9%	1%	3%	2%	1%	5%
2012	97%	8%	1%	0%	0%	0%	0%	17%	3%	10%	5%	11%	3%	5%	6%
2013	64%	6%	1%	0%	1%	0%	0%	20%	6%	15%	7%	56%	6%	0%	7%
2014	82%	11%	2%	0%	1%	0%	0%	21%	3%	20%	2%	6%	5%	9%	8%
Total	67%	11%	1%	1%	1%	0%	1%	20%	7%	10%	1%	8%	3%	7%	

Table 5. Share of limited access scallop landings in total scallop landings in each area (% of area total)

Areas that have a change in recent years compared to % of landings have been highlighted

FY	514	521	522	525	526	561	562	612	613	615	616	621	622	626	Total for FY
1996	74%	97%	89%	97%	99%	98%	100%	93%	96%	95%	98%	98%	98%	95%	95%
1997	62%	98%	97%	98%	99%	99%	88%	93%	96%	96%	98%	93%	96%	94%	94%
1998	34%	95%	97%	92%	97%	97%	92%	76%	92%	88%	94%	92%	96%	88%	91%
1999	34%	97%	99%	98%	99%	99%	99%	58%	92%	93%	97%	96%	95%	95%	96%
2000	9%	97%	100%	98%	100%	99%	99%	80%	95%	97%	99%	98%	98%	99%	98%
2001	47%	92%	99%	99%	100%	99%	99%	81%	94%	97%	100%	99%	99%	99%	96%
2002	24%	96%	99%	99%	100%	99%	100%	87%	98%	97%	99%	99%	99%	98%	97%
2003	14%	87%	100%	100%	100%	100%	99%	90%	97%	96%	99%	99%	99%	97%	97%
2004	17%	31%	98%	96%	99%	99%	98%	74%	82%	92%	99%	95%	99%	95%	95%
2005	1%	59%	99%	98%	97%	100%	100%	78%	78%	84%	99%	56%	91%	53%	85%
2006	10%	86%	97%	98%	98%	100%	100%	58%	77%	68%	98%	33%	75%	53%	88%
2007	10%	82%	98%	99%	98%	99%	99%	58%	87%	81%	98%	92%	95%	56%	91%
2008	28%	85%	96%	99%	97%	99%	100%	69%	87%	84%	99%	92%	98%	96%	92%
2009	9%	76%	99%	100%	100%	100%	100%	74%	93%	86%	99%	90%	96%	97%	93%
2010	9%	93%	99%	99%	97%	100%	100%	92%	95%	94%	99%	97%	99%	95%	95%
2011	9%	84%	100%	100%	99%	100%	100%	90%	97%	91%	99%	97%	98%	99%	95%
2012	3%	92%	99%	100%	100%	100%	100%	83%	97%	90%	95%	89%	97%	95%	94%
2013	36%	94%	99%	100%	99%	100%	100%	80%	94%	85%	93%	44%	94%	0%	93%
2014	18%	89%	98%	100%	99%	100%	100%	79%	97%	80%	98%	94%	95%	91%	92%
Total	33%	89%	99%	99%	99%	100%	99%	80%	93%	90%	99%	92%	97%	93%	93%
Mean	24%	86%	98%	98%	99%	99%	99%	79%	92%	89%	98%	87%	96%	84%	94%
Median	17%	92%	99%	99%	99%	99%	100%	80%	94%	91%	99%	94%	97%	95%	94%
StdDev.	20%	16%	2%	2%	1%	1%	3%	11%	6%	7%	2%	19%	5%	25%	3%

- Delmarva was closed to fishing in 2013.

Table 6. LAGC scallop landings by area as a % of all areas in each fishing year
 Areas that have a change in recent years compared to % of landings have been highlighted

FY	514	521	522	525	526	561	562	612	613	615	616	621	622	626	All areas
1996	36%	10%	3%	5%	1%	1%	0%	2%	8%	10%	7%	2%	6%	9%	100%
1997	47%	7%	1%	2%	1%	1%	2%	5%	10%	7%	4%	4%	5%	4%	100%
1998	17%	9%	1%	7%	3%	2%	1%	10%	10%	10%	3%	9%	3%	16%	100%
1999	11%	5%	1%	2%	2%	0%	5%	12%	9%	19%	3%	10%	9%	11%	100%
2000	12%	7%	1%	3%	1%	0%	3%	15%	18%	18%	3%	10%	5%	5%	100%
2001	31%	20%	1%	1%	0%	0%	0%	7%	14%	16%	1%	4%	3%	2%	100%
2002	28%	10%	1%	1%	2%	0%	0%	11%	5%	23%	2%	7%	3%	6%	100%
2003	16%	20%	0%	0%	0%	0%	0%	9%	4%	23%	2%	10%	3%	12%	100%
2004	3%	17%	0%	1%	1%	0%	2%	8%	6%	28%	1%	17%	3%	11%	100%
2005	4%	10%	1%	1%	1%	0%	0%	8%	10%	19%	1%	27%	4%	13%	100%
2006	3%	12%	0%	1%	4%	0%	0%	10%	8%	20%	1%	22%	3%	15%	100%
2007	2%	11%	2%	1%	3%	0%	0%	17%	8%	27%	2%	20%	7%	0%	100%
2008	2%	4%	0%	0%	5%	0%	0%	28%	3%	22%	0%	30%	5%	0%	100%
2009	2%	6%	0%	0%	0%	0%	0%	29%	2%	26%	0%	18%	13%	2%	100%
2010	7%	11%	0%	0%	9%	0%	0%	14%	6%	33%	1%	6%	3%	9%	100%
2011	8%	21%	1%	0%	1%	0%	0%	25%	4%	33%	1%	2%	2%	1%	100%
2012	17%	23%	1%	0%	1%	0%	0%	17%	6%	29%	2%	1%	3%	0%	100%
2013	16%	21%	1%	0%	3%	0%	0%	18%	8%	27%	2%	0%	3%	0%	100%
2014	14%	14%	0%	0%	2%	0%	0%	22%	10%	24%	2%	3%	1%	9%	100%
All years	15%	13%	1%	1%	2%	0%	1%	14%	8%	22%	2%	11%	4%	7%	100%

Table 7. LA scallop landings by area as a % of all areas in each fishing year

Areas that have a change in recent years compared to % of landings have been highlighted

FY	514	521	522	525	526	561	562	612	613	615	616	621	622	626	All areas
1996	5%	17%	1%	6%	4%	4%	1%	1%	9%	9%	16%	6%	12%	8%	100%
1997	5%	21%	2%	7%	7%	6%	1%	4%	13%	10%	10%	4%	7%	4%	100%
1998	1%	16%	5%	8%	9%	6%	2%	3%	12%	7%	5%	11%	6%	11%	100%
1999	0%	7%	4%	5%	6%	3%	28%	1%	5%	11%	3%	9%	8%	9%	100%
2000	0%	5%	12%	4%	9%	1%	5%	1%	8%	16%	8%	11%	7%	12%	100%
2001	1%	8%	2%	3%	6%	1%	0%	1%	9%	20%	10%	12%	20%	6%	100%
2002	0%	7%	1%	2%	14%	1%	0%	2%	8%	20%	4%	19%	12%	10%	100%
2003	0%	4%	2%	3%	4%	4%	1%	3%	5%	17%	9%	26%	9%	12%	100%
2004	0%	0%	1%	1%	7%	0%	8%	1%	2%	18%	14%	20%	15%	14%	100%
2005	0%	3%	14%	7%	7%	1%	12%	5%	6%	18%	12%	6%	7%	3%	100%
2006	0%	10%	2%	8%	25%	4%	26%	2%	4%	6%	8%	2%	1%	2%	100%
2007	0%	5%	10%	6%	15%	2%	1%	2%	5%	11%	8%	22%	13%	0%	100%
2008	0%	2%	0%	7%	17%	2%	0%	5%	2%	10%	3%	29%	23%	0%	100%
2009	0%	1%	1%	9%	7%	3%	6%	7%	2%	13%	4%	13%	26%	6%	100%
2010	0%	7%	1%	1%	14%	2%	0%	8%	5%	26%	5%	10%	11%	9%	100%
2011	0%	6%	11%	4%	5%	3%	5%	13%	7%	18%	13%	3%	4%	9%	100%
2012	0%	17%	5%	5%	15%	5%	10%	5%	10%	16%	2%	1%	7%	0%	100%
2013	1%	26%	4%	6%	21%	5%	7%	5%	9%	11%	2%	0%	3%	0%	100%
2014	0%	9%	1%	9%	10%	1%	8%	7%	25%	8%	10%	3%	2%	7%	100%
All years	0%	8%	4%	5%	11%	3%	6%	4%	7%	15%	7%	12%	11%	6%	100%

Figure 9. Proportion of landings by LA and LAGC vessels in CAREA=514 (% of area landings by year)

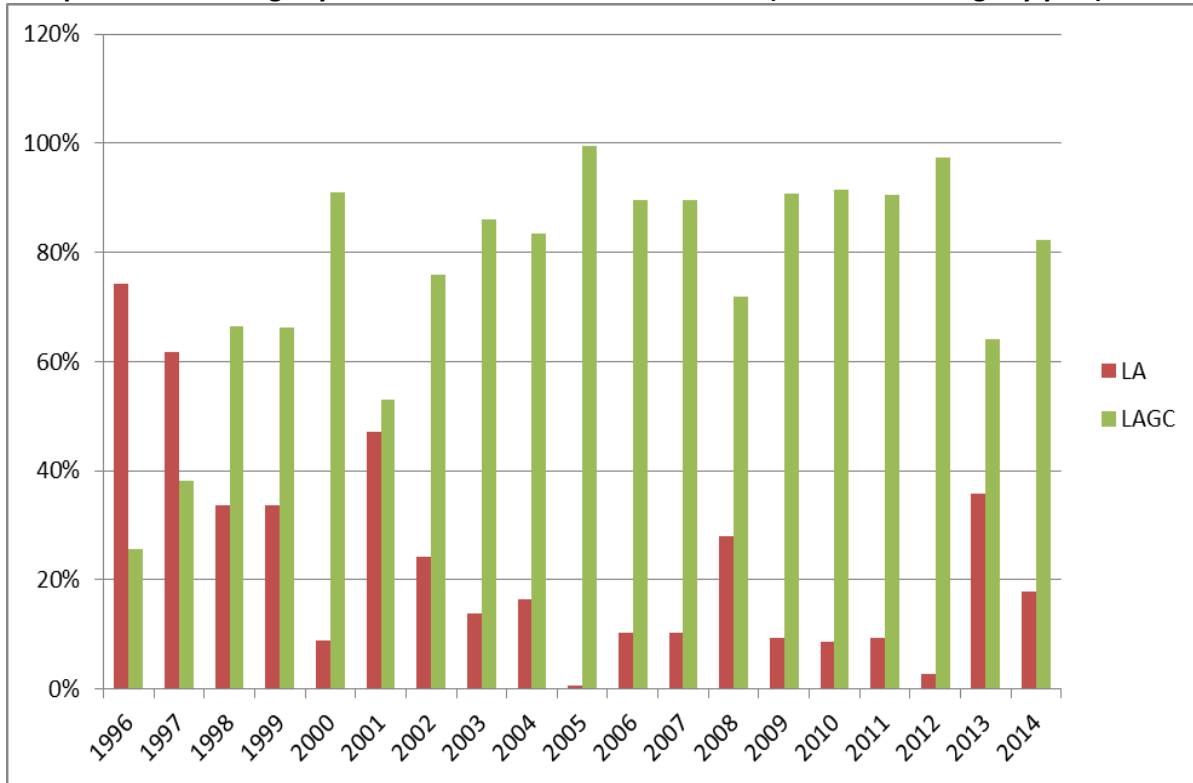


Figure 10. Proportion of landings by LA and LAGC vessels in CAREA=521 (% of area landings by year)



Figure 11. Proportion of landings by LA and LAGC vessels in CAREA=612 (% of area landings by year)

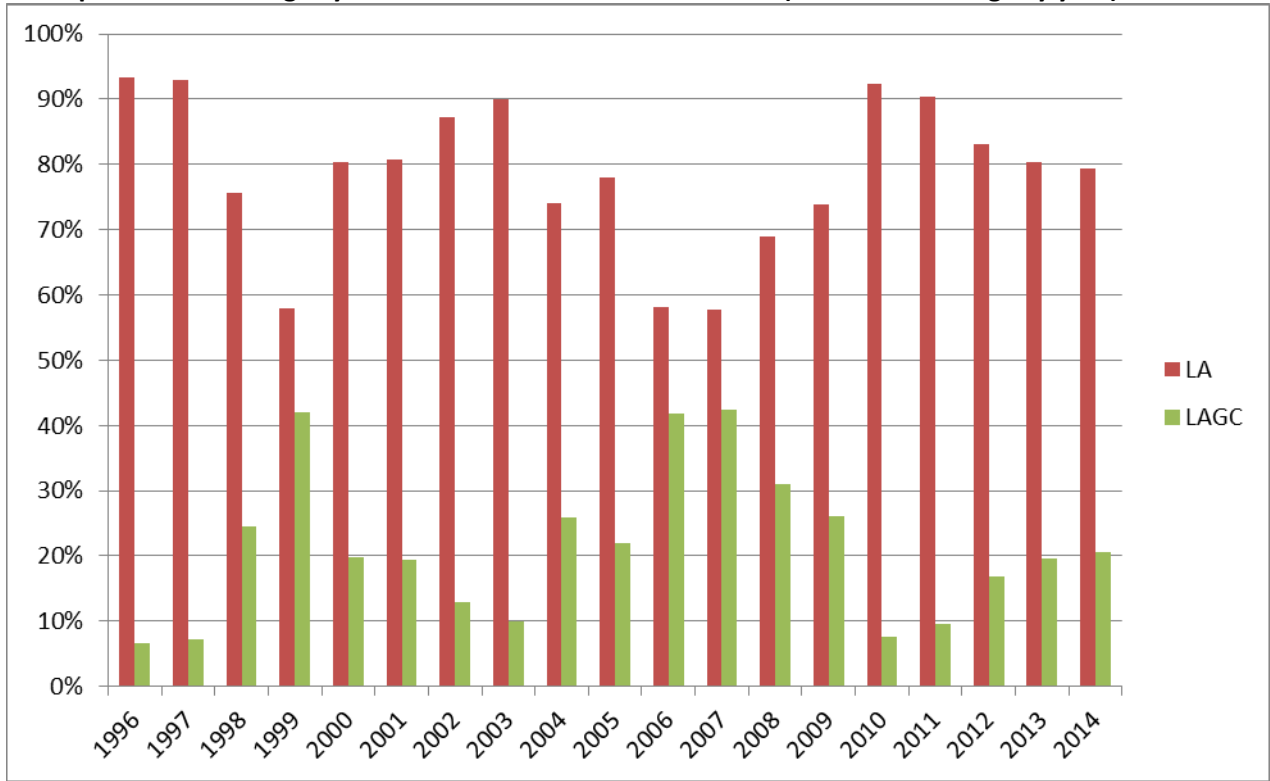


Figure 12. Proportion of landings by LA and LAGC vessels in CAREA=621 (% of area landings by year)

