

NOAA's National Marine Fisheries Service (NMFS)



Jon Peros (Scallop PDT) data request for the Northern Gulf of Maine in support of the March 1, 2017 PDT meeting

Version: 1.0

Date published: February 22, 2017

Presented by: B. Galuardi

1. *2016 landings by market category by LAGC permit category NGOM*

Figure 1

2. *Update Limited access binned squares map for NGOM*

a. *Total landings by permit type in 2016 (LA, NGOM, IFQ)*

The information provided previously is the most up to date. No updates are necessary. See Figure 2 for LAGC example

3. *VTR stat area maps for NGOM stat areas only*

Figure 3 and a series of maps not included in this Word document

4. *Generate LAGC binned squares map for NGOM*

Figure 4 shows how the visualization changes by changing the cell size (1, 3, 5 and 10 minute squares). Confidentiality requires a minimum of three permits per cell.

5. *Final Limited Access Landings for 2016 in NGOM management area*

Landings are estimated only due to reliance on VTR location for fishing activity in NGOM area. See Table

Table 1 Limited Access totals for FY 2016 in the NGOM management area

NGOM Limited Access 2016	number of trips	number of permits	Sum of total
Full time	14	5	187,127
Full time small dredge	3	3	15,362
Part time small dredge	21	5	90,028
Grand Total	38	13	292,517

LAGC NGOM FY 2016 Market Grades

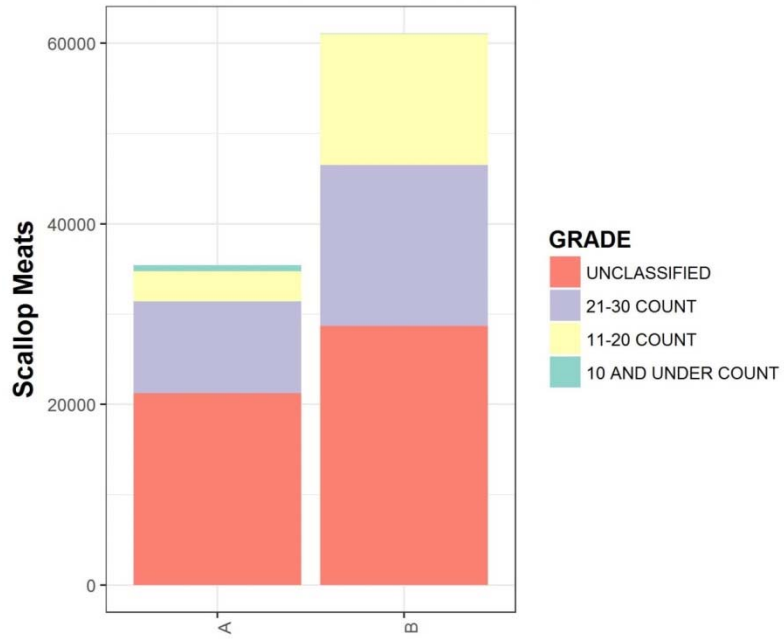


Figure 1. NGOM landings by grade 2016. Since grade is a term for meat sizes, unclassified likely refers to scallops landed in-shell.

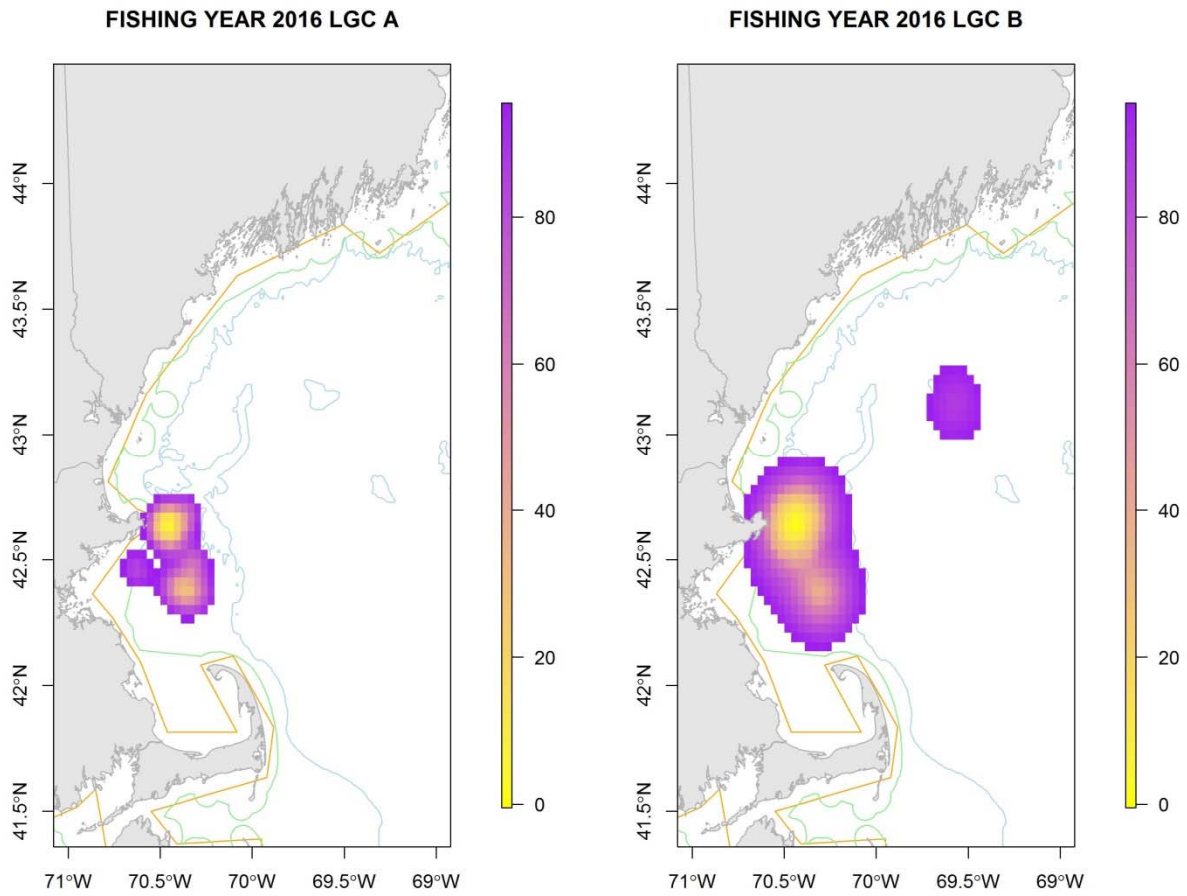


Figure 2. Kernel density plot (heatmap) of LAGC NGOM fishing trips by permit type. Colors indicate density of trips; lower numbers (yellows) indicate more dense areas while higher numbers (purples) indicate less dense areas (the tail of the spatial distribution).

NGOM Areas 1996-2015 (VTR landings)

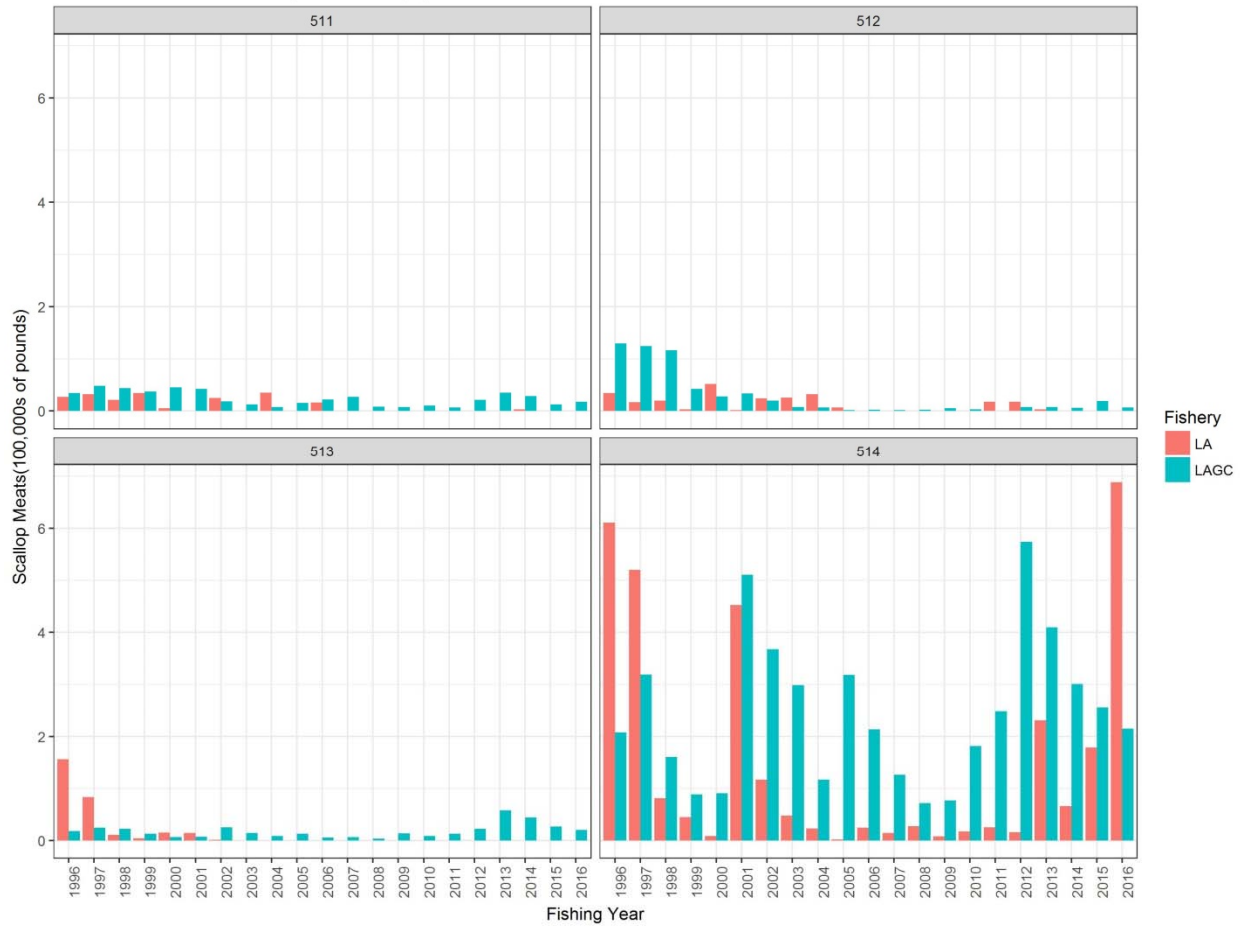


Figure 3. VTR Landings for LA (> 1000 lbs/trip) and LAGC (< 1000lbs/trip) by statistical area. Area 514 landings include non-NGOM areas south of 42° 20'. VTR landings are not official records for ACL monitoring. LA and LAGC are not official designations throughout the time series; the 1000lb/trip threshold is a rough, yet consistent, estimator.

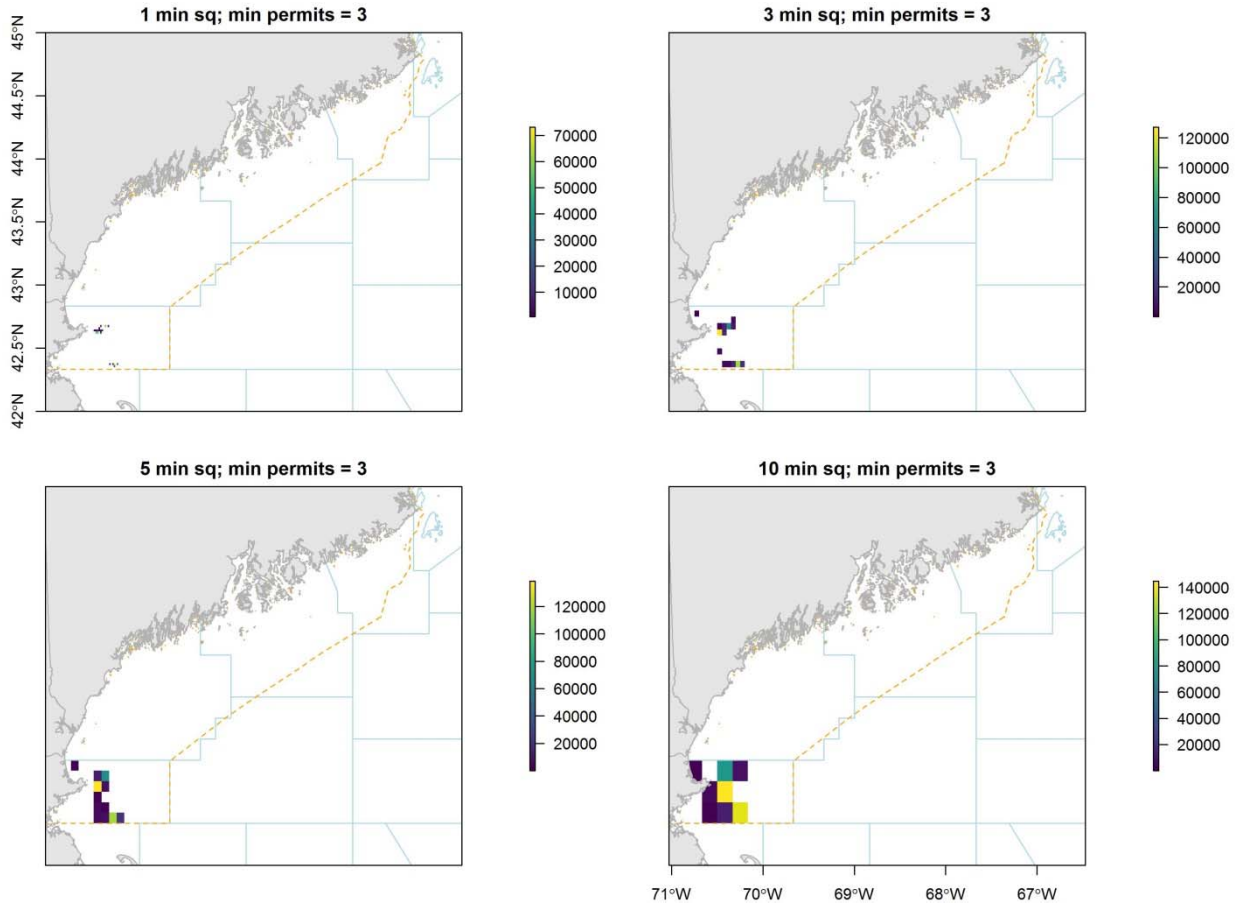


Figure 4. Binned maps of VTR locations and landings for NGOM landings in 2016 (LA and LAGC combined). A minimum of three permits is present in each cell. Different cell sizes highlight the differences in visualization.