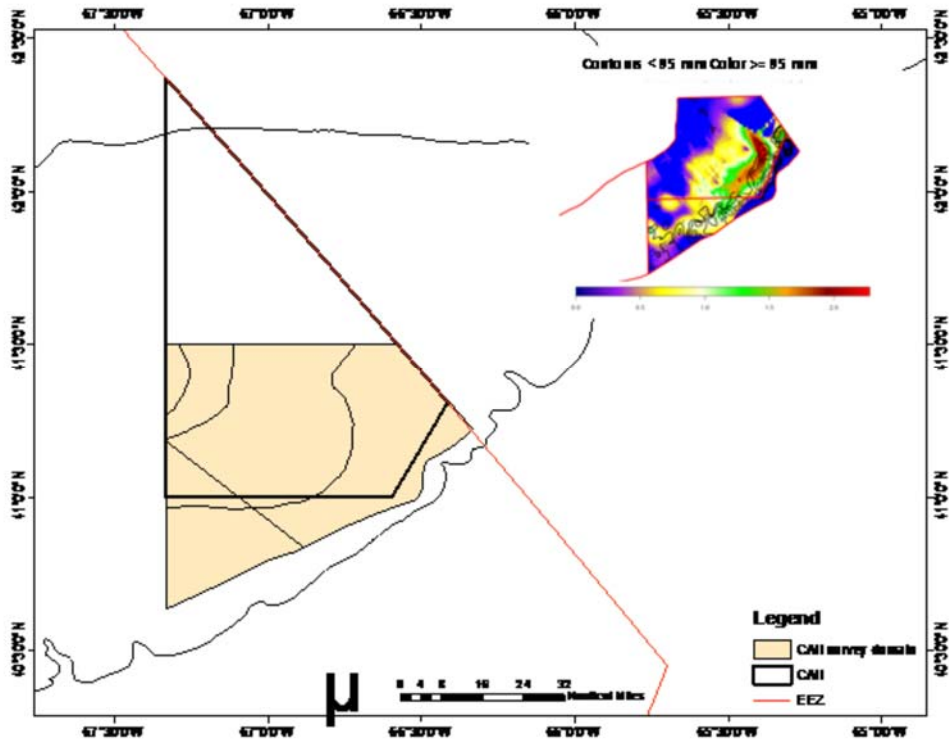


Table 1 - 2016/2017 Scallop RSA Awards by years funded

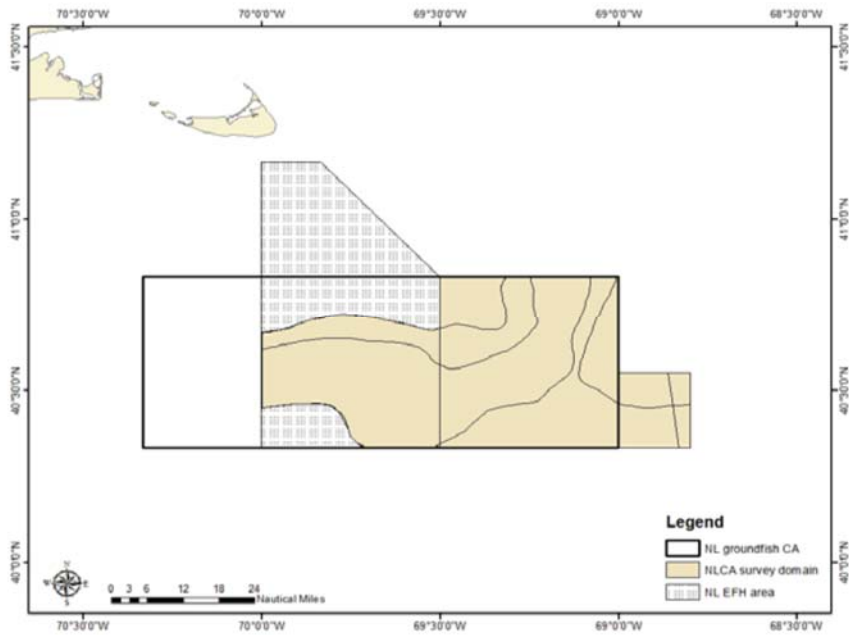
Primary Project Category	Title	Organization	Funding
	<b>Projects funded for 2016 (1 year)</b>		
Biology	Drivers of Dispersal and Retention in Recently Seeded Sea Scallops	Coonamessett Farm	\$1,080,128
Biology	Scallop Mark-Recapture to Estimate Density Dependent Natural Mortality and Growth	VIMS	\$594,284
Bycatch	Optimizing the Georges Bank Scallop Fishery by Maximizing Meat Yield and Minimizing Bycatch	Coonamessett Farm	\$1,994,292
Bycatch	Development of Ecosystem Friendly Scallop Dredge Bags: Tools for Long-Term Sustainability	Coonamessett Farm	\$1,576,200
Bycatch	A modified flounder sweep for flatfish bycatch reduction in the LAGC scallop fishery	Coonamessett Farm	\$369,520
Bycatch	Scallop Fishery Bycatch Avoidance System 2016	SMAST	\$312,500
Survey	Optical Survey of the Scallop Resource in the Elephant Trunk Scallop Access Area	Arnie's Fisheries	\$586,540
Survey	An Assessment of Sea Scallop Abundance and Distribution in Georges Bank Closed Area II and Surrounds	VIMS	\$448,215
Turtle	Understanding Impacts of the Sea Scallop Fishery on Loggerhead Sea Turtles Through Satellite Tagging	Coonamessett Farm	\$892,058.50
	<b>Projects funded for 2016 and 2017 (2 years)</b>		
Biology	Age Structure and Growth Rate in the Sea Scallop (2 years)	VIMS	\$613,673
Parasite/ Infection	Transmission of Apicomplexan Infection and Development of Gray Meat in Atlantic Sea Scallops (2 years)	SMAST	\$639,786
Parasite/ Infection	An Investigation into the scallop parasite outbreak on the Mid-Atlantic shelf: Transmission Pathways, Spatio-Temporal variation of infection, and consequences of marketability (2 years)	VIMS	\$945,422
Survey	A Cooperative High Precision Dredge Survey to Assess the Mid-Atlantic Sea Scallop Resource Area (2-years)	VIMS	\$1,979,346
Survey	An Assessment of Sea Scallop Abundance and Distribution in the Nantucket Lightship Closed Area and Surrounds (2 years)	VIMS	\$891,945
Survey/ Habitat	Impact of Disturbance on Habitat Recovery in Habitat Management Areas on Georges Bank (2 years)	WHOI	\$2,665,944

**2016/2017 Scallop RSA Surveys**

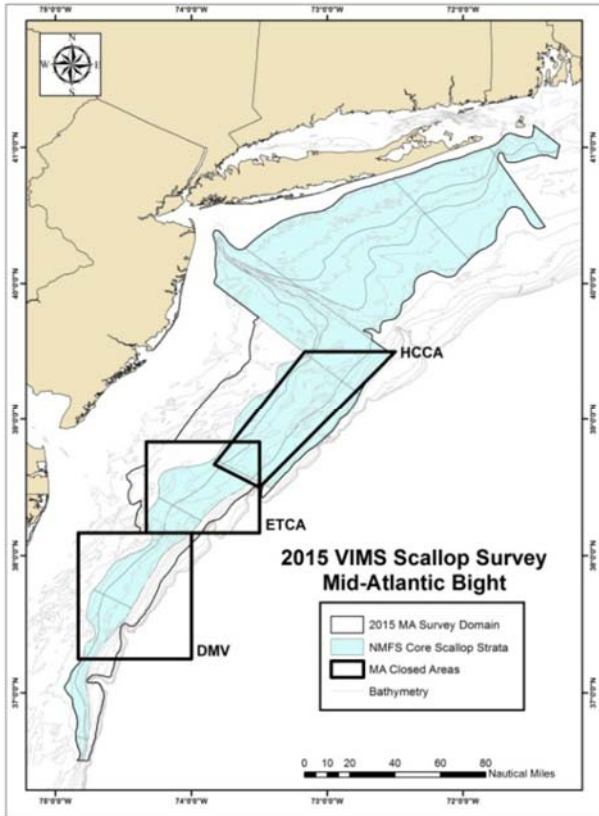
VIMS CAII+, 2016 only (tan shaded area)



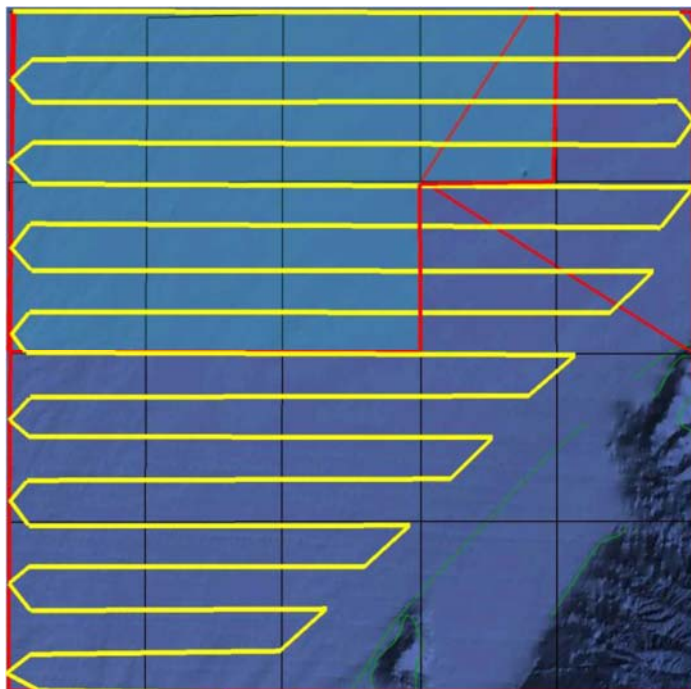
VIMS NLCA+, 2016 and 2017 (tan shaded area)



VIMS MAB, 2016 and 2017 (gray outlined area)



Arnie's ETAA, 2016 (area covered by yellow transects)



WHOI GB HMA, 2016 and 2017 (black outlined area)

