

# FY2019 VMS effort by SAMS

Sam Asci  
Council Staff

Scallop PDT—October 15, 2020



New England  
Fishery Management  
Council

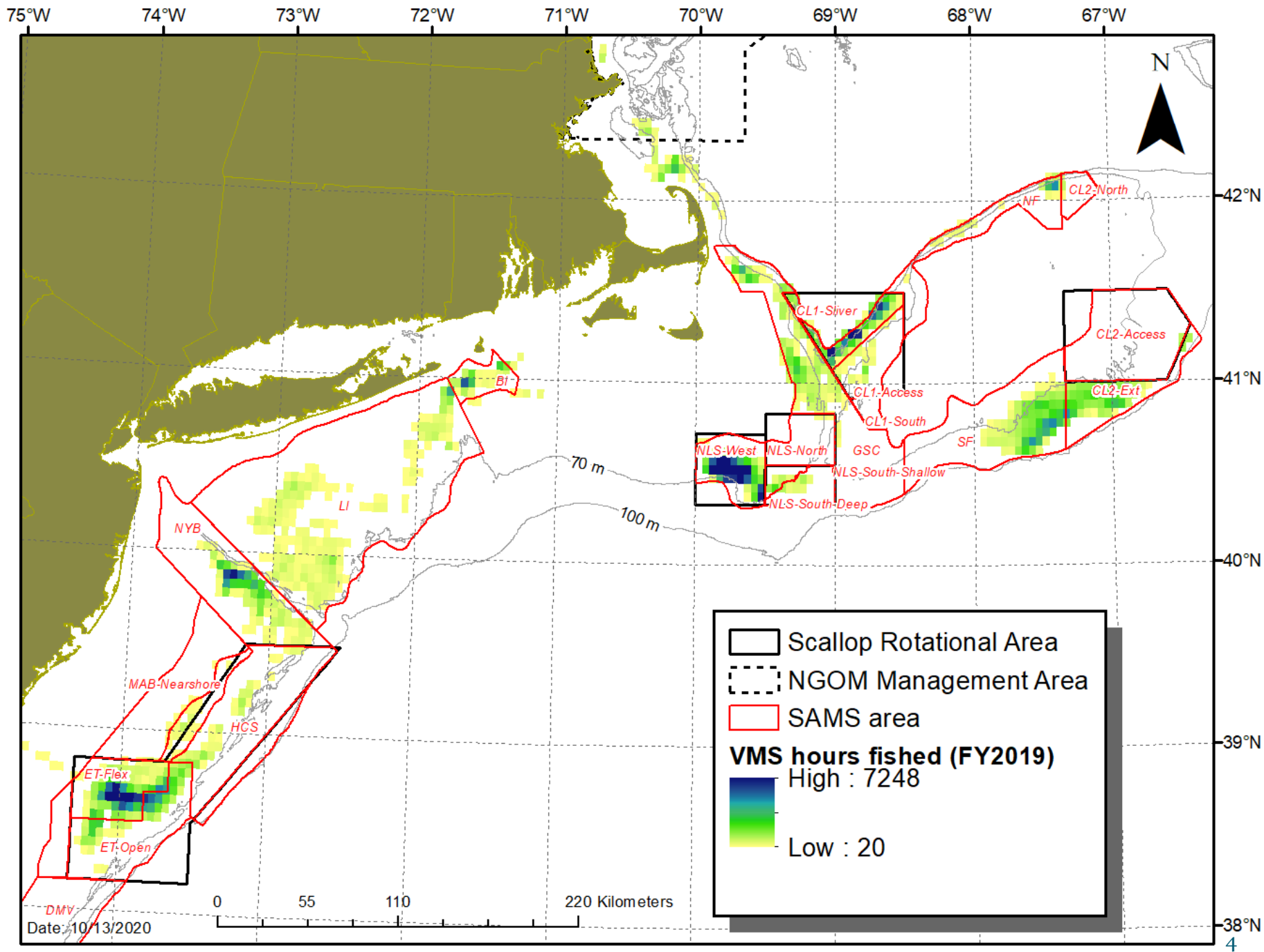
# Overview

- Complete FY2019 VMS hours fished for LA and LAGC IFQ components, April 1<sup>st</sup>, 2019 through March 31<sup>st</sup>, 2020, by region and SAMS area.
- Available FY2020 data included separately (April 1, 2020 – July 31, 2020)
- VMS effort outside of SAMS area boundaries was < 2% of grand total
  - Focused primarily north/east of P-Town, the NGOM, and along southern border of BI SAMS.
  - *These tables do not include VMS hours from outside of SAMS areas.*

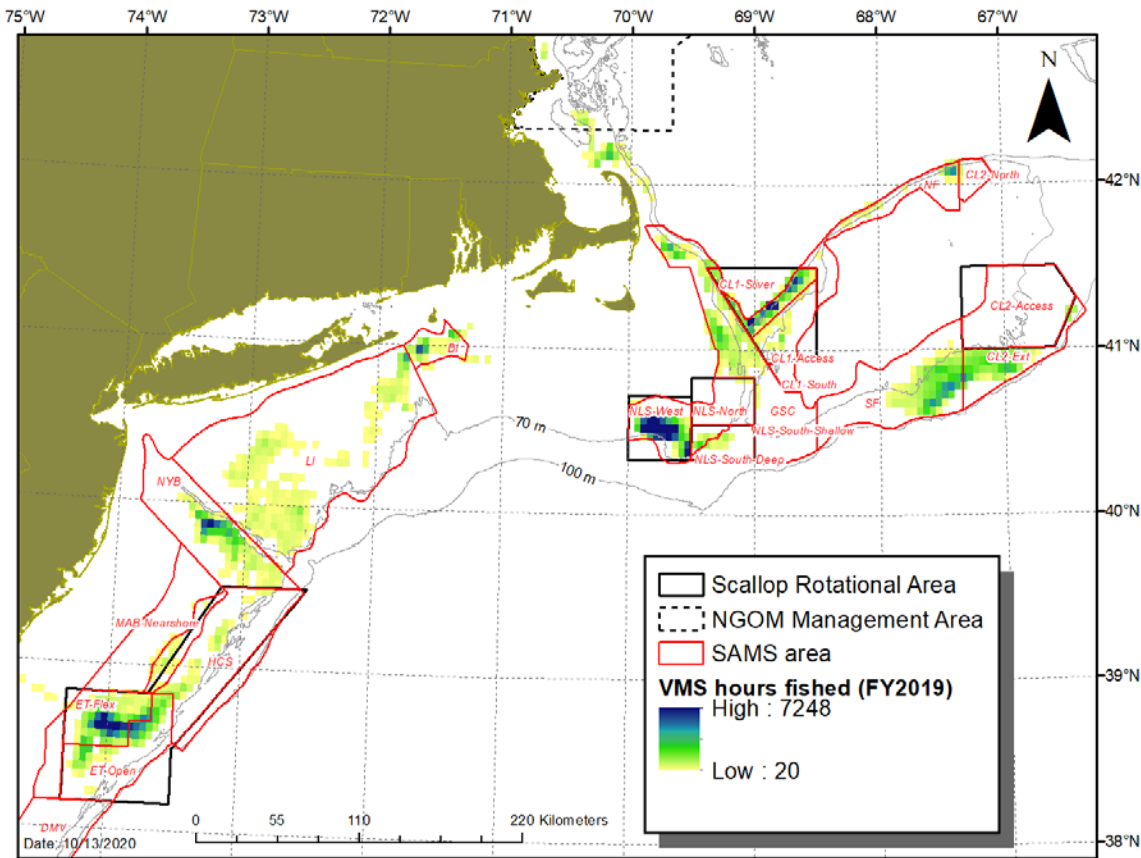
# Data used

## Source: B. Galuardi (GARFO)

- Data is combined scallop fishery (LA and LAGC) VMS pings from April 2019 – March 2020.
- Sum of polls x time (30 min/poll) = total hours
- Maps aggregated at 3 nm squares. Minimum 20 hours in each square.
- 2-5 kt speed filter applied.
- All data within state waters were masked.
- VMS hours were summed by SAMS area using 'Zonal statistics' tool (ArcMap 10.5).



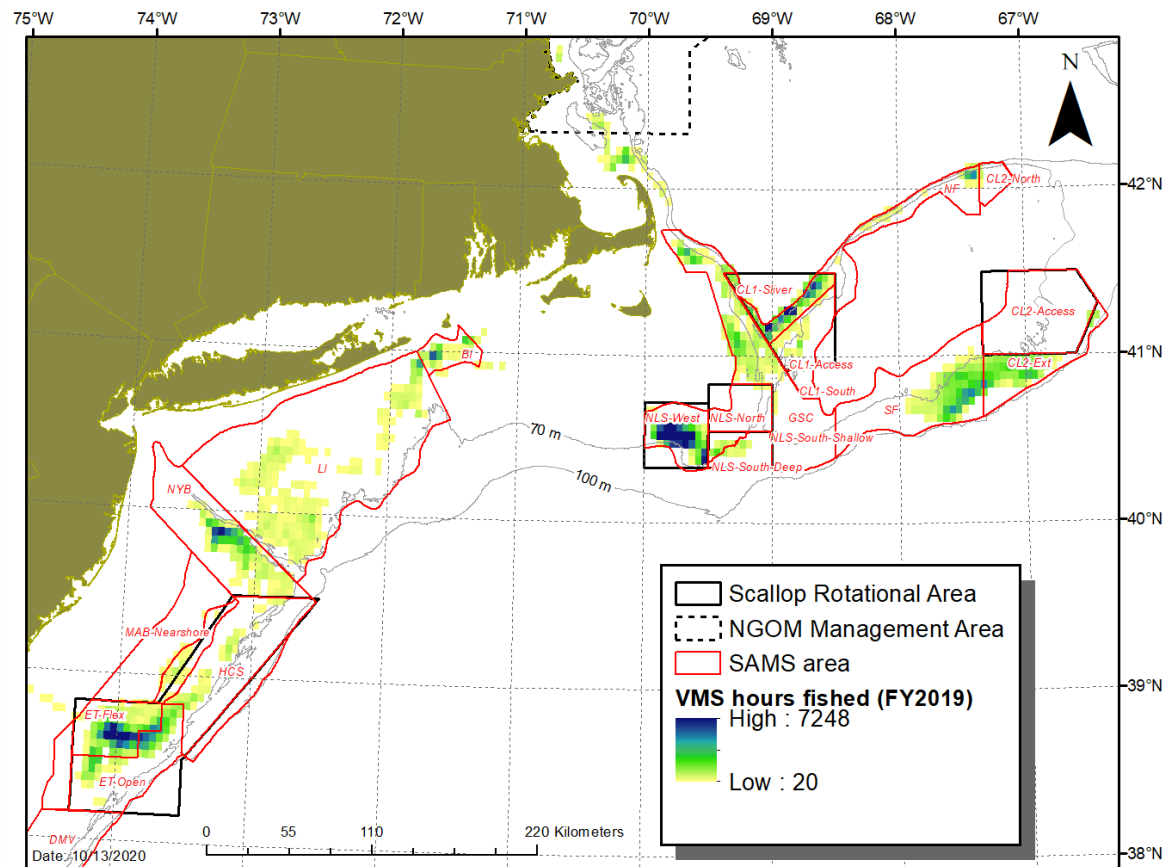
# Total hours by SAMS



Region/SAMS	VMS hours	percent of hours
<b>GB</b>		
CL1-Access	1,431	0.6%
CL1-Sliver	18,370	8.1%
CL2-Access	217	0.1%
CL2-Ext	14,489	6.4%
SF	25,111	11.0%
NF	3,480	1.5%
GSC	16,298	7.2%
NLS-North	139	0.1%
NLS-South-Deep	1,036	0.5%
NLS-South-Shallow	1,293	0.6%
NLS-West	54,171	23.8%
<b>MAB</b>		
ET-Flex	33,201	14.6%
ET-Open	15,481	6.8%
HCS	2,951	1.3%
BI	5,046	2.2%
LI	15,278	6.7%
NYB	19,303	8.5%
MAB-Nearshore	214	0.1%
<b>Grand Total</b>	<b>227,509</b>	

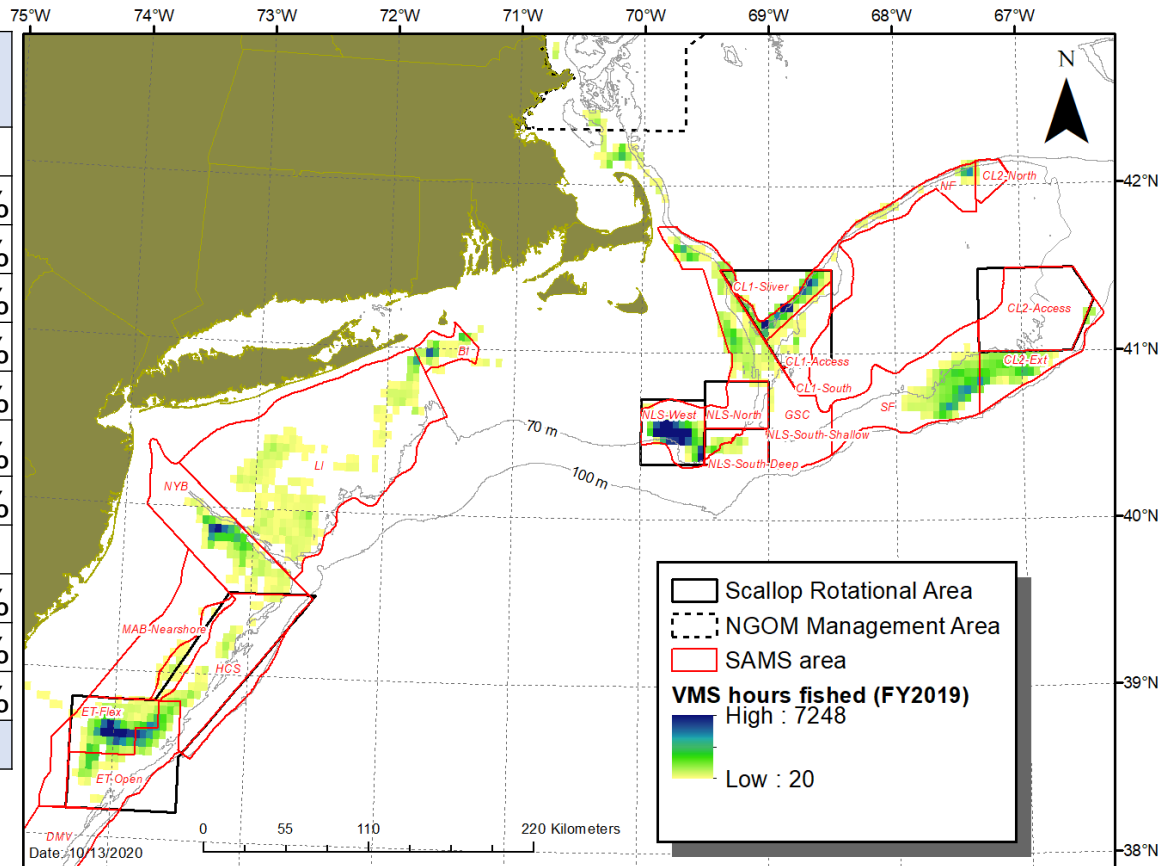
# Open area effort

Region/SAMS	VMS hours	percent of hours
<b>GB</b>		
CL2-Ext	14,489	14.6%
SF	25,111	25.3%
NF	3,480	3.5%
GSC	16,298	16.4%
<b>MAB</b>		
BI	5,046	5.1%
LI	15,278	15.4%
NYB	19,303	19.5%
MAB-Nearshore	214	0.2%
<b>Grand Total</b>	<b>99,219</b>	



# Access area effort

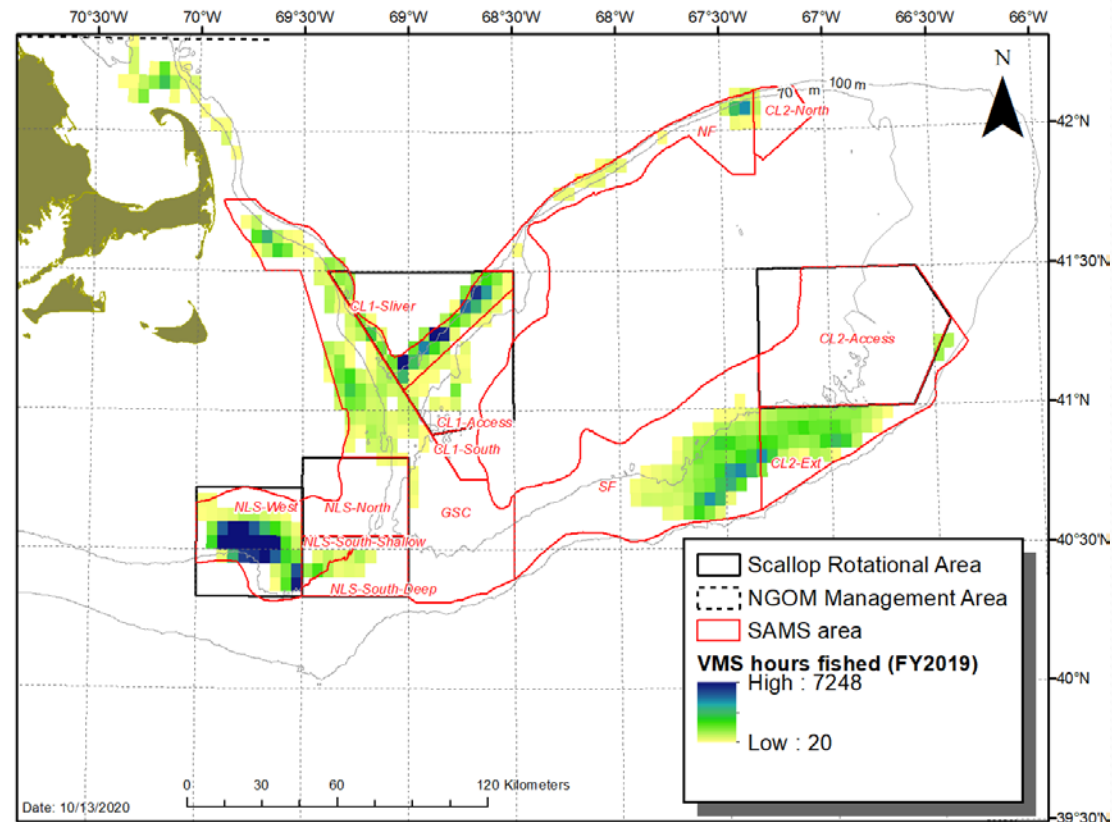
Region/SAMS	VMS hours	percent of hours
<b>GB</b>		
CL1-Access	1,431	1.1%
CL1-Sliver	18,370	14.3%
CL2-Access	217	0.2%
NLS-North	139	0.1%
NLS-South-Deep	1,036	0.8%
NLS-South-Shallow	1,293	1.0%
NLS-West	54,171	42.2%
<b>MAB</b>		
ET-Flex	33,201	25.9%
ET-Open	15,481	12.1%
HCS	2,951	2.3%
<b>Grand Total</b>	<b>128,290</b>	





# Georges Bank effort

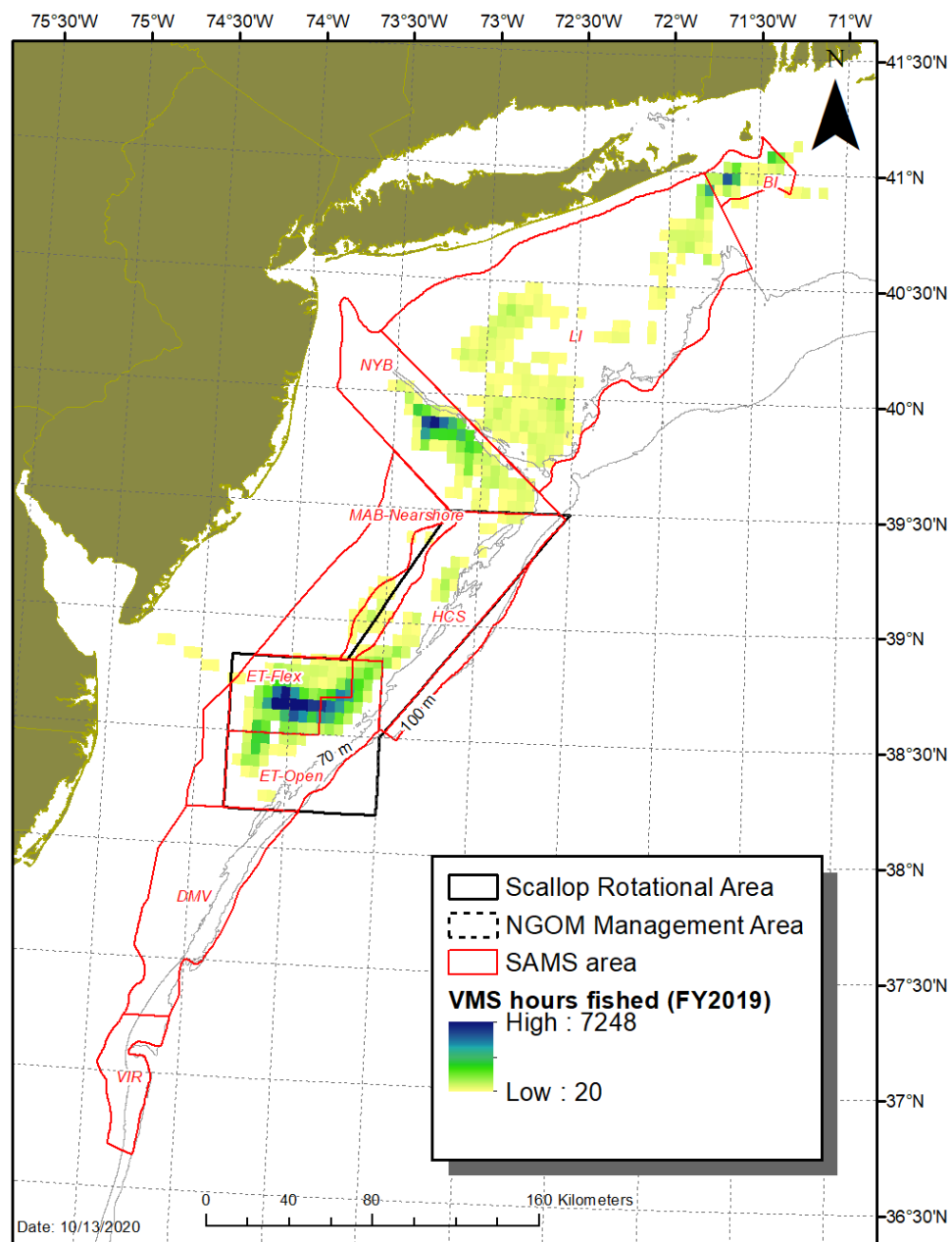
Region/SAMS	VMS hours	percent of hours
<b>GB</b>		
CL1-Access	1,431	1.1%
CL1-Sliver	18,370	13.5%
CL2-Access	217	0.2%
CL2-Ext	14,489	10.7%
SF	25,111	18.5%
NF	3,480	2.6%
GSC	16,298	12.0%
NLS-North	139	0.1%
NLS-South-Deep	1,036	0.8%
NLS-South-Shallow	1,293	1.0%
NLS-West	54,171	39.8%
<b>Grand Total</b>	<b>136,035</b>	





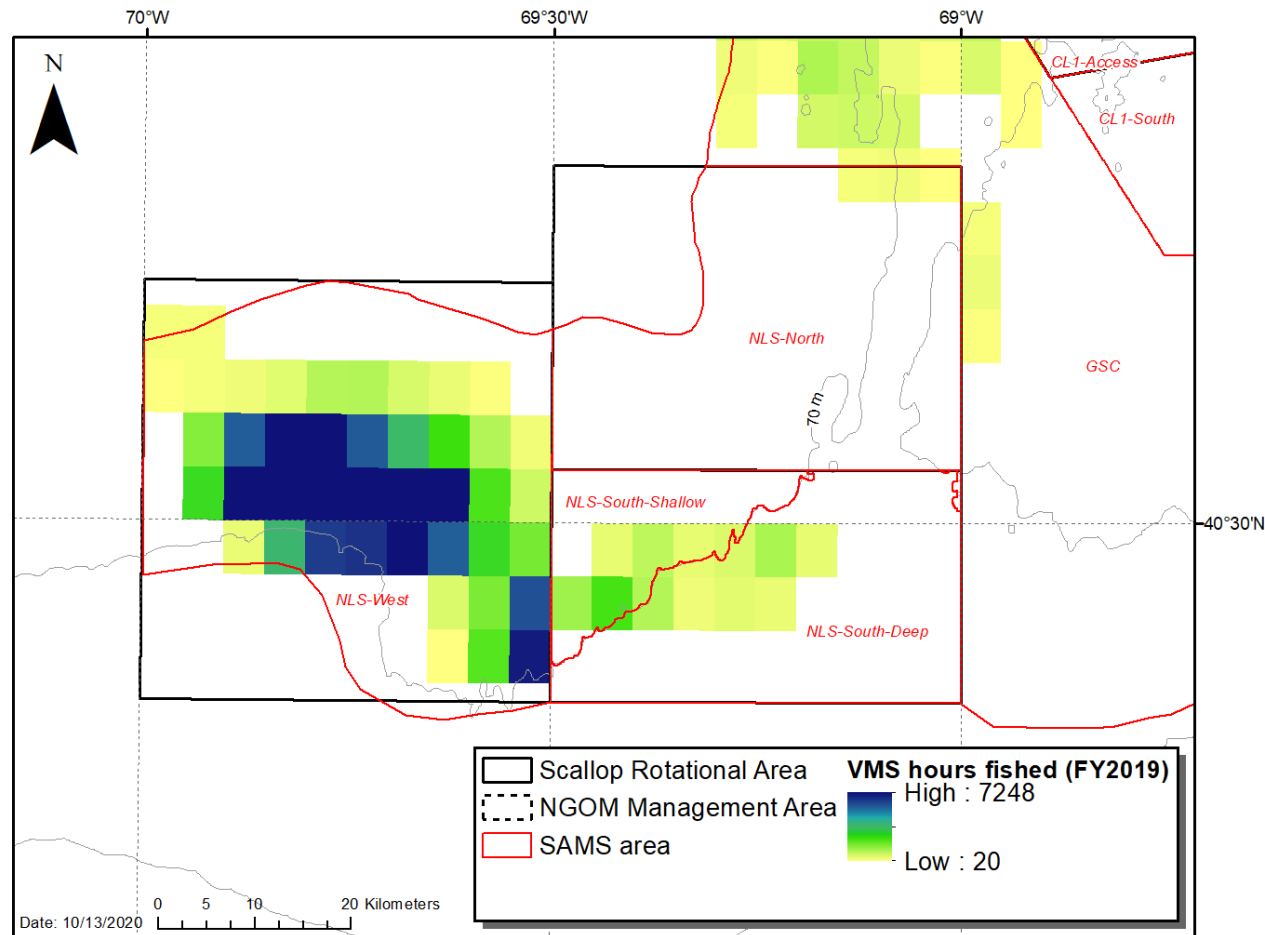
# Mid-Atlantic effort

Region/SAMS	VMS hours	percent of hours
<b>MAB</b>		
ET-Flex	33,201	36.3%
ET-Open	15,481	16.9%
HCS	2,951	3.2%
BI	5,046	5.5%
LI	15,278	16.7%
NYB	19,303	21.1%
MAB-Nearshore	214	0.2%
<b>Grand Total</b>	<b>91,474</b>	

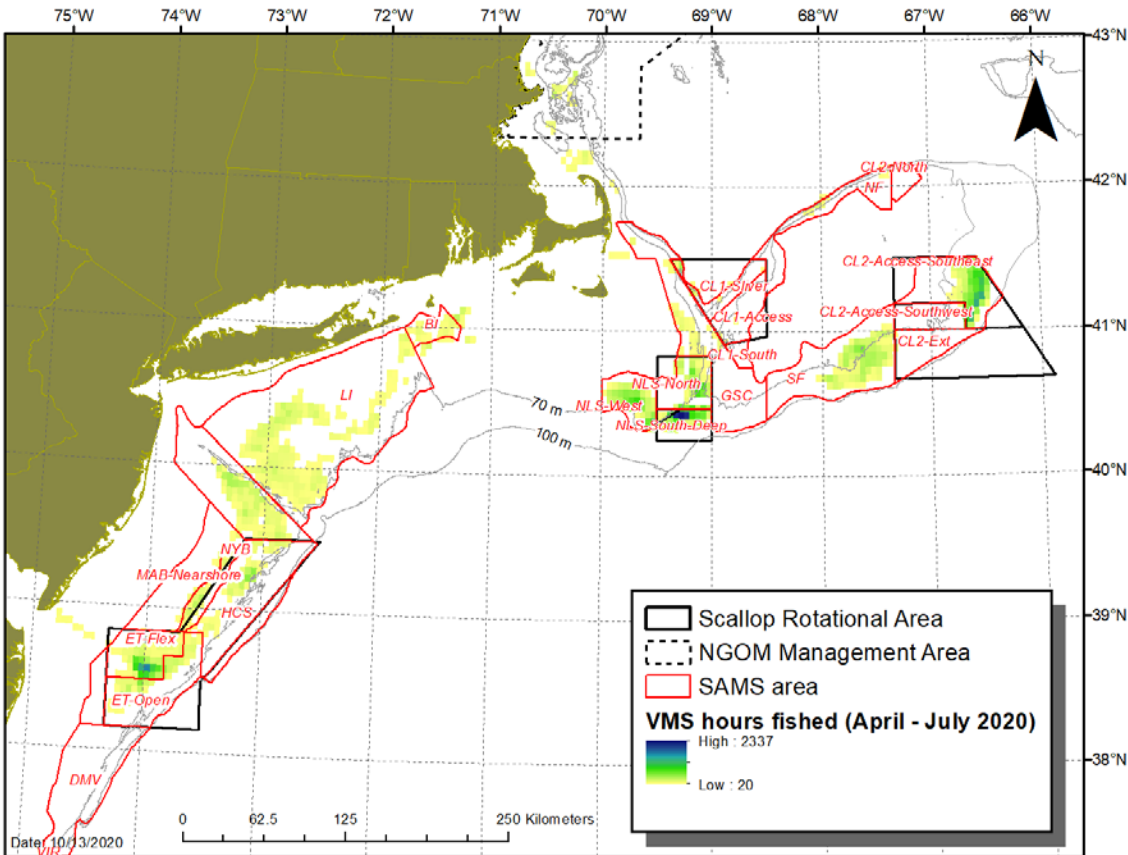


# Nantucket Lightship

Region/SAMS	VMS hours	percent of hours
<b>GB</b>		
NLS-North	139	0.2%
NLS-South-Deep	1,036	1.8%
NLS-South-Shallow	1,293	2.3%
NLS-West	54,171	95.6%
<b>Grand Total</b>	<b>56,639</b>	



# Total hours by SAMS (FY2020 Apr-Jul)



Region/SAMS	VMS hours	percent of hours
<b>GB</b>		
CL1-Access	40	0.0%
CL1-Sliver	983	0.8%
CL2-Access-Southeast	20,845	17.0%
CL2-Access-Southwest	2,106	1.7%
SF	12,025	9.8%
NF	650	0.5%
GSC	1,771	1.4%
NLS-North	6,503	5.3%
NLS-South-Deep	15,446	12.6%
NLS-West	11,570	9.5%
<b>MAB</b>		
ET-Flex	13,740	11.2%
ET-Open	5,400	4.4%
HCS	4,622	3.8%
BI	1,200	1.0%
LI	14,615	11.9%
NYB	10,188	8.3%
MAB-Nearshore	665	0.5%
<b>Grand Total</b>	<b>122,370</b>	

# Comments:

- Most fishing in ET-Flex, highest 2020 biomass in ET-Open, very little fishing in HCS in 2019. Very little fishing south of the ET-Flex.
- 3 FT LA trips to NLS-West and MAAA in 2019:
  - NLS-West had ~54k dredge hours
  - MAAA had ~44k dredge hours (10k less)
- Need more 2020 to draw conclusions about fishing practices...several issues could be impacting how the year started: COVID, the Emergency Action, push to get trips in the NLS-South area.

# Activity Outside SAMS

## (FY2020 Apr-Jul)

- Activity off outer Cape, southern Stellwagen
- NGOM spread out—Ipswich Bay, Jeffreys, Platts, and western edge of Stellwagen
- Inshore effort around BI (outside of SAMS)

