

2017 Scallop Grades and LPUE update

Benjamin Galuardi (NOAA/NMFS/GARFO/APSD)

2017-05-17

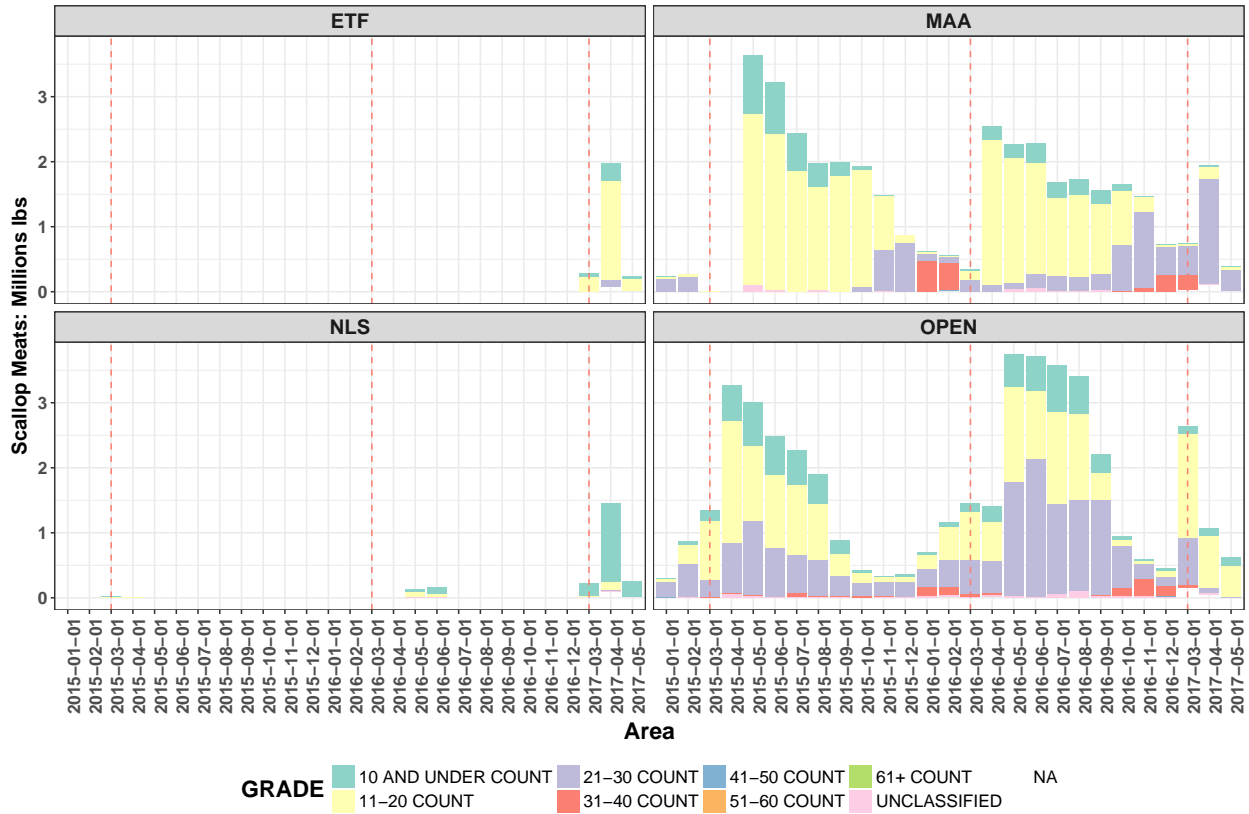


Figure 1: Scallop landings, by grade, within access areas and open areas for fishing years 2015, 2016 and 2017 (to date). Red dashed lines indicate start of fishing year(s).

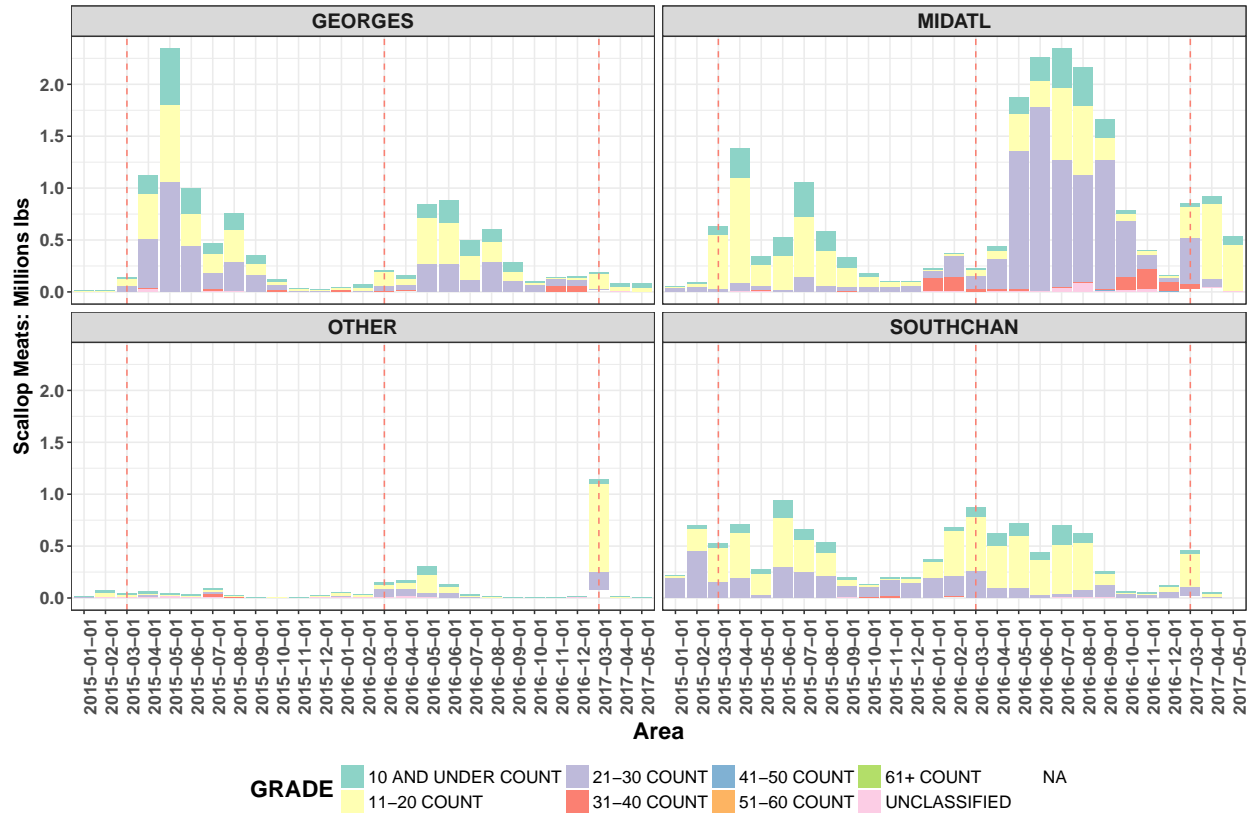


Figure 2: Scallop landings, by grade, for different sections of open area, for fishing years 2015, 2016 and 2017 (to date). Red dashed lines indicate start of fishing year(s). Open areas were defined by statistical area as follows: SOUTHCHAN (521, 526), GEORGES (522 - 599, excluding 526), MIDATL (≥ 600), OTHER (all others, including NGOM)

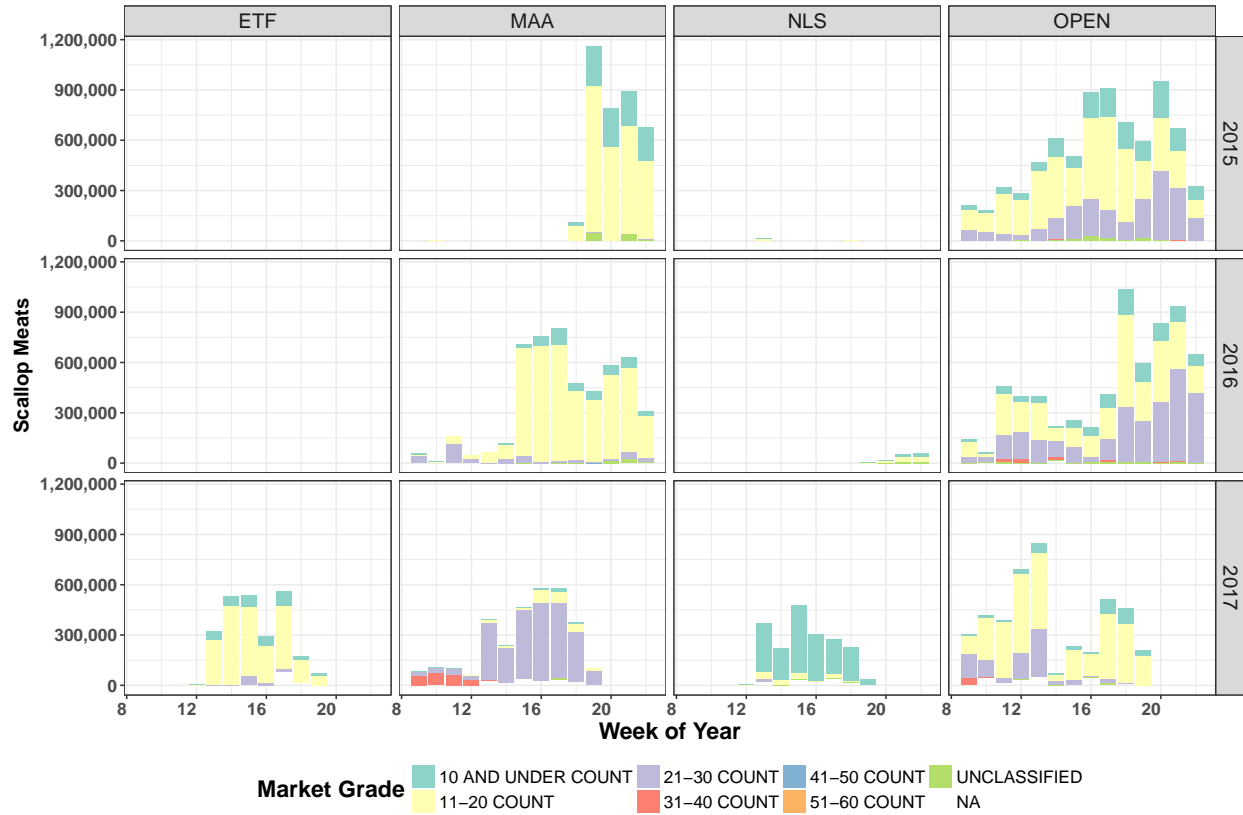


Figure 3: Scallop landings by week of the year, for the first three months of fishing years 2015 - 2017 (to date), by market grade and Access/Open area.

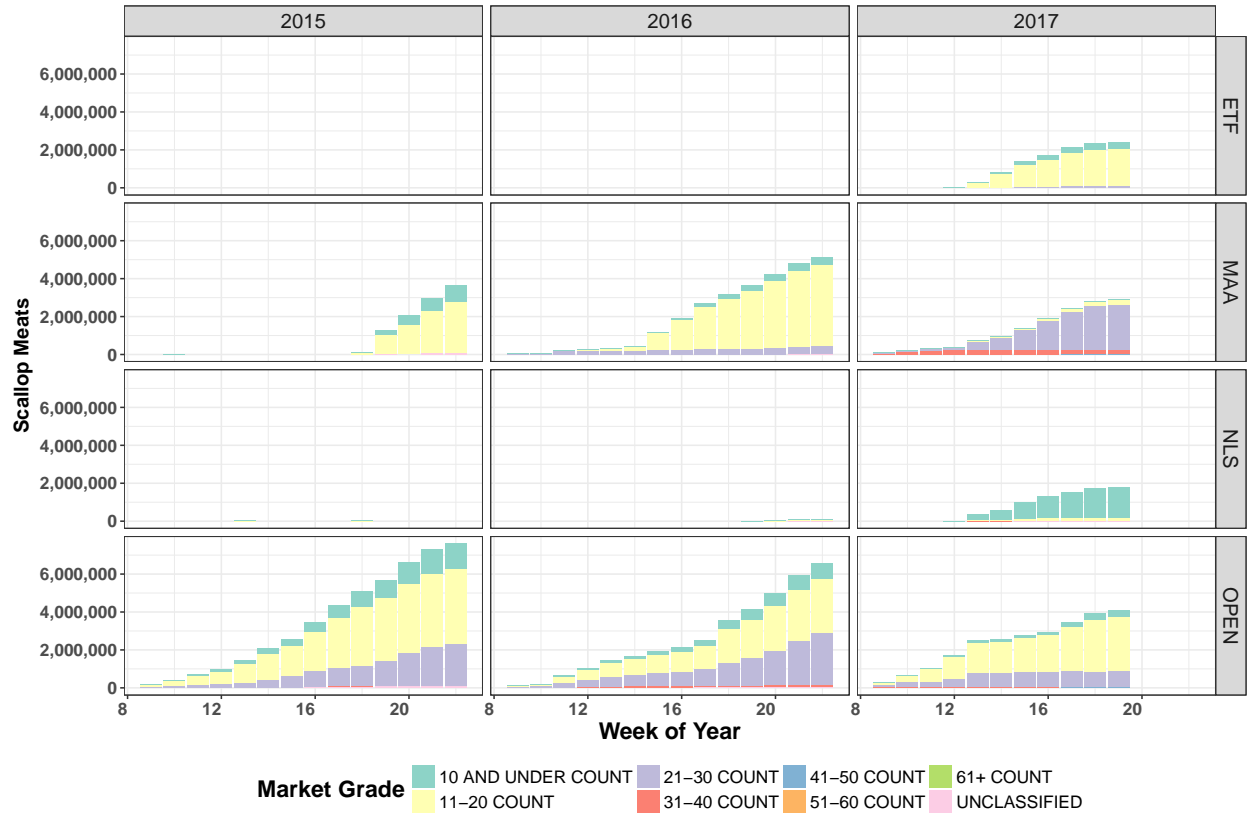


Figure 4: Cumulative landings, by week and grade, in the first three months of fishing years 2015 - 2017 (to date) for Access and Open areas.

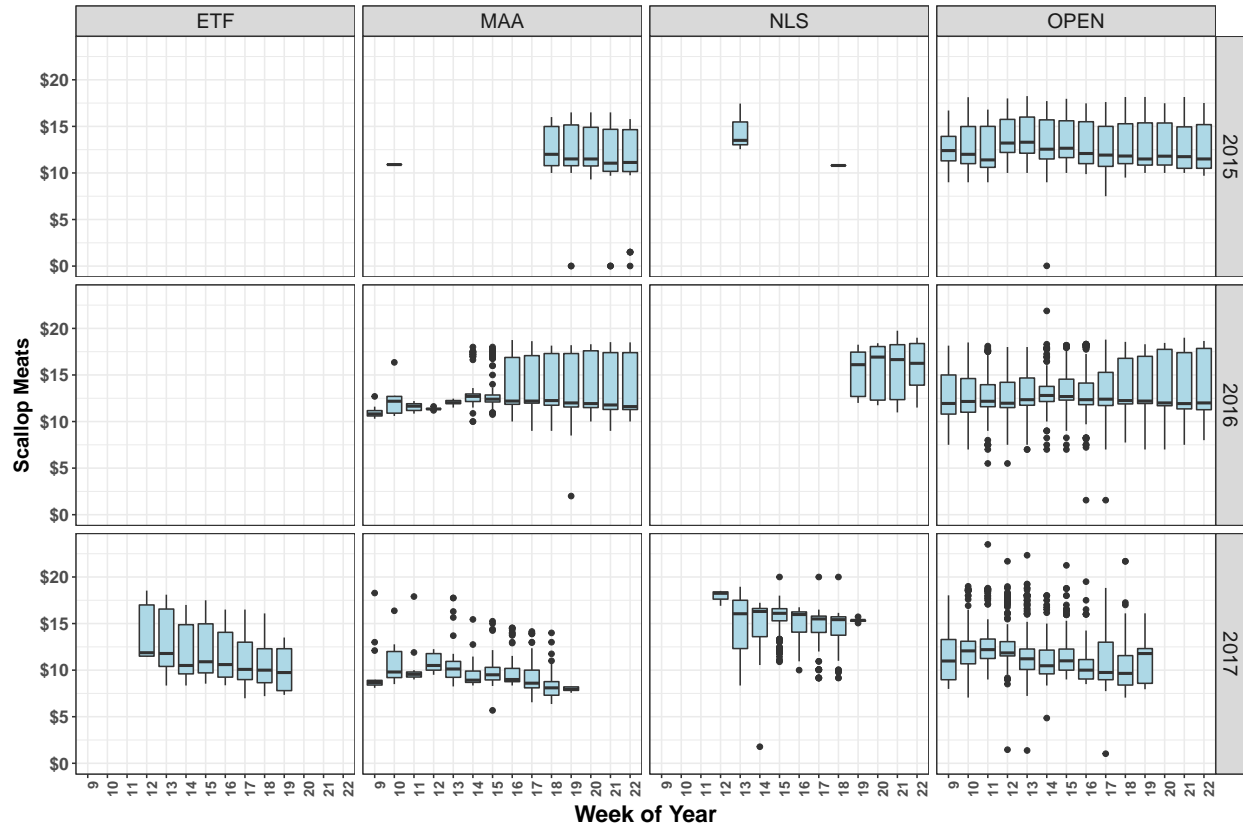


Figure 5: Boxplots of weekly price/pound for March-May of fishing years 2015-2017 (to date). Boxes indicate interquartile range (25% - 75%); thick, horizontal, black lines indicate weekly mean. Whiskers and dots show 95% range and outliers, respectively.

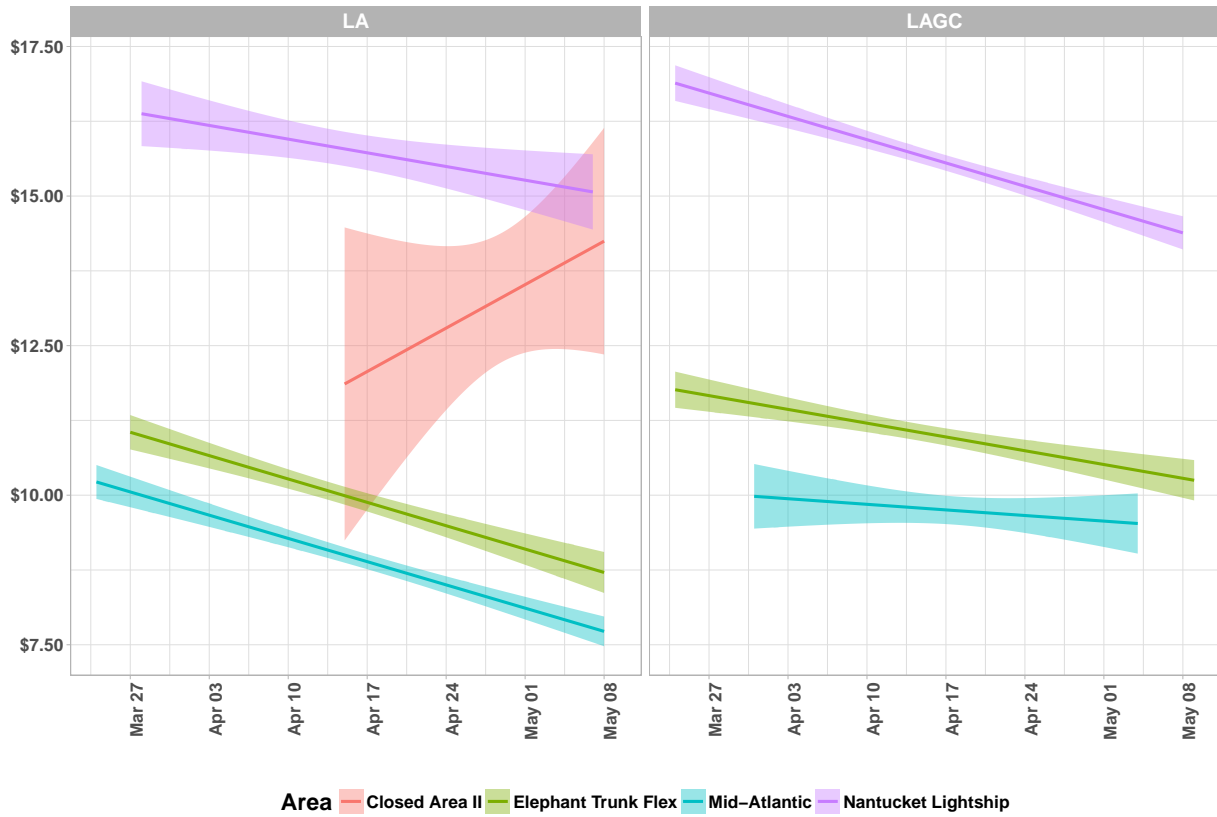


Figure 6: Average scallop price per trip by fleet and Access Area for Fishing Year 2017

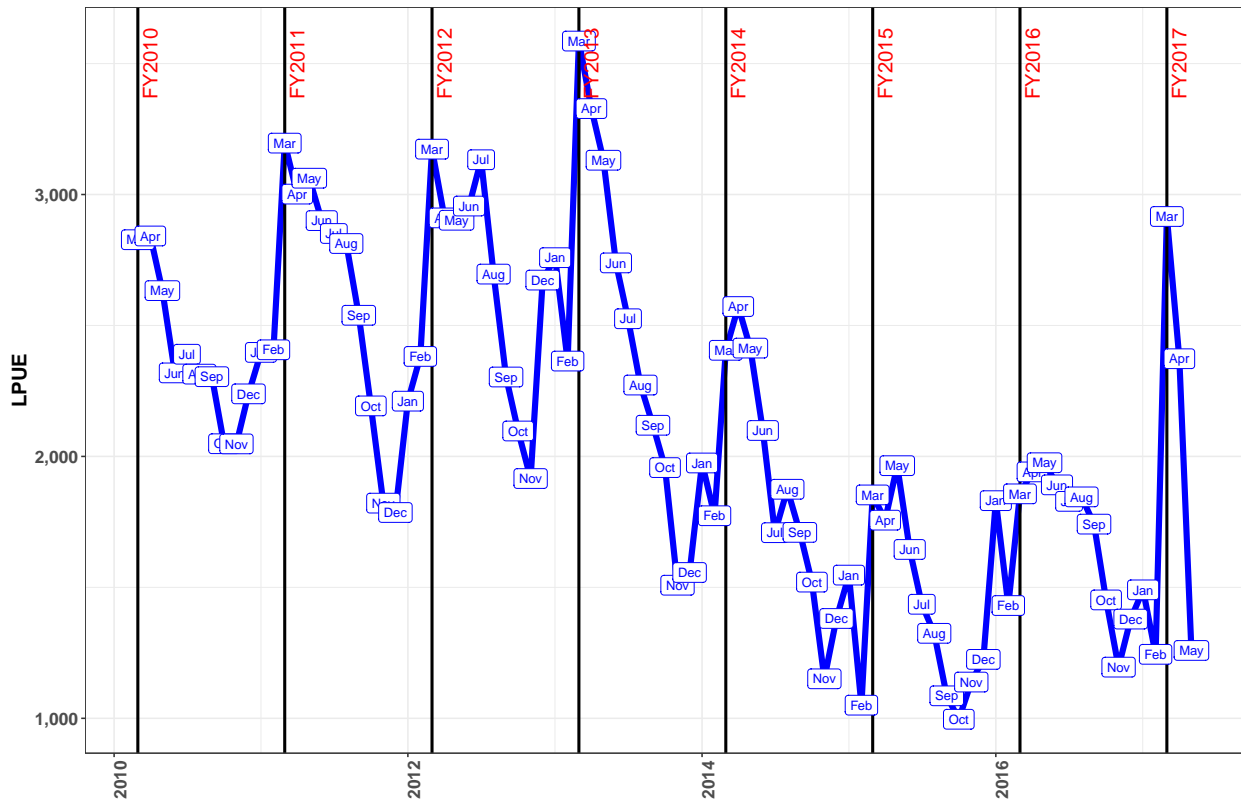


Figure 7: LPUE by month for Open Area Limited Access fishing. LPUE was calculated by dividing monthly scallop meat total landings by the days-at-sea charged.