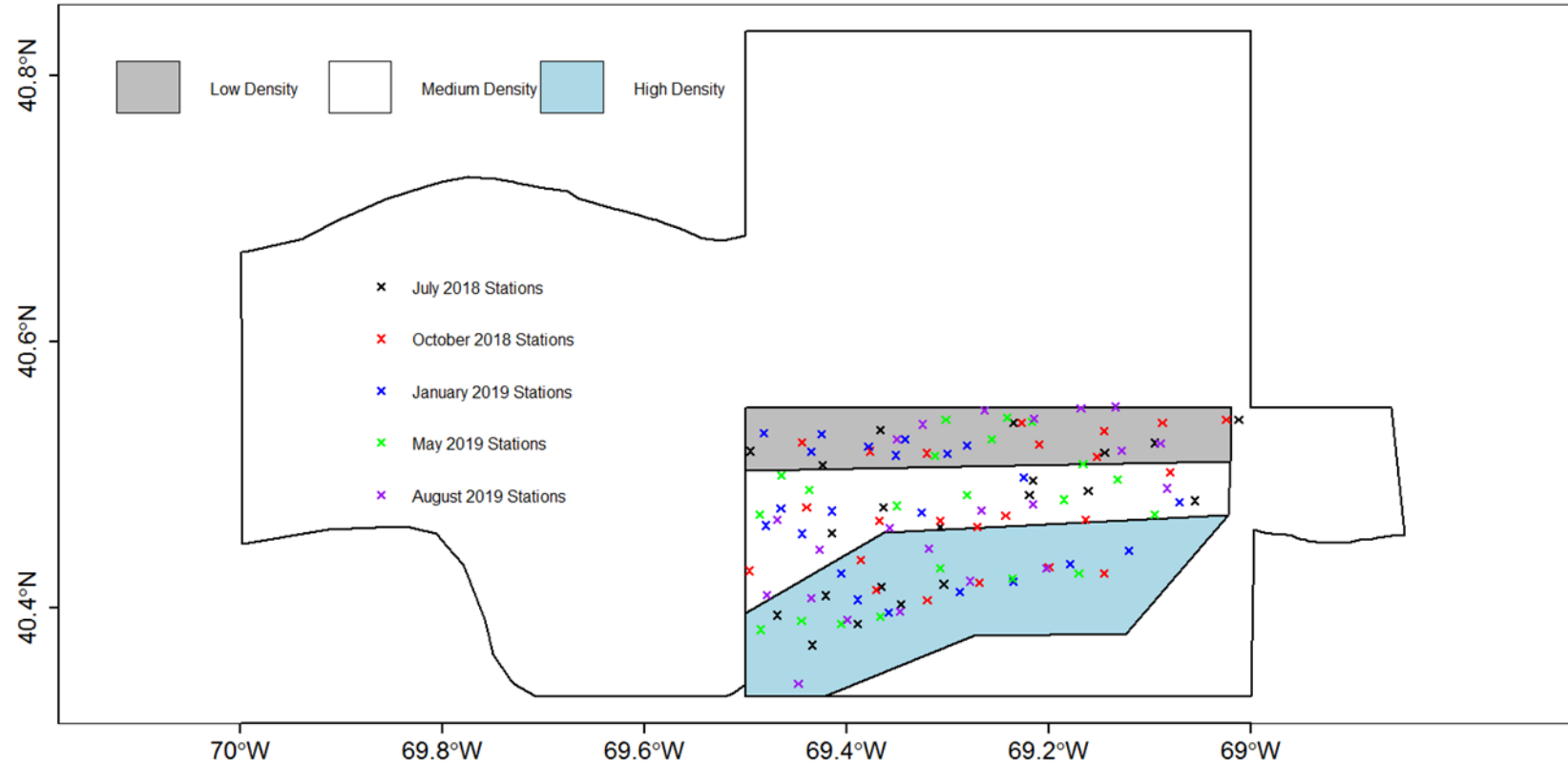


VIMS NL South Deep Information

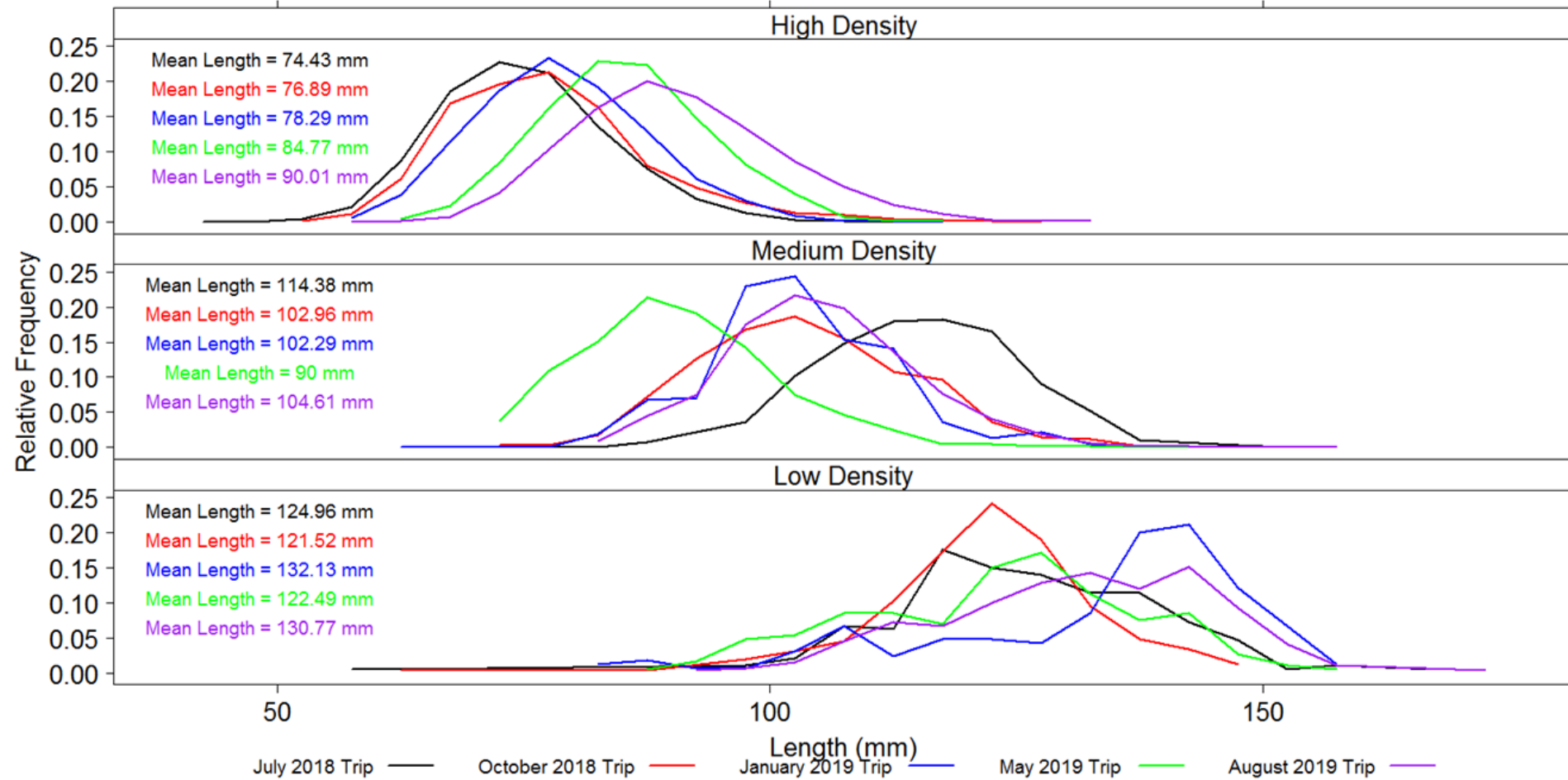


Density Dependent RSA Project



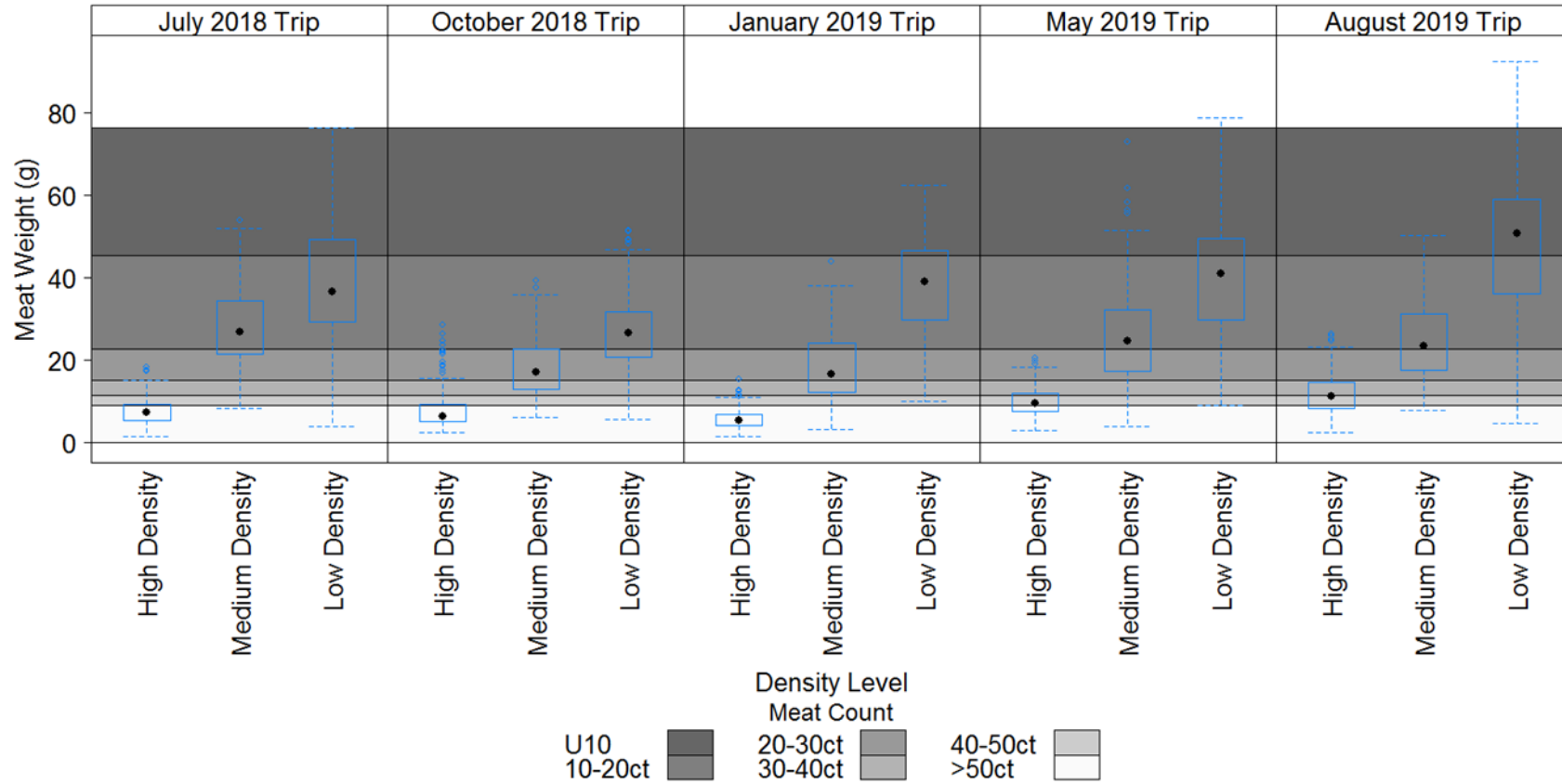
- Quarterly sampling since July 2019 in South Deep Area
- 21 randomly selected stations, 7 in each density strata

Density Dependent RSA Project Length Distributions



Density Dependent RSA Project

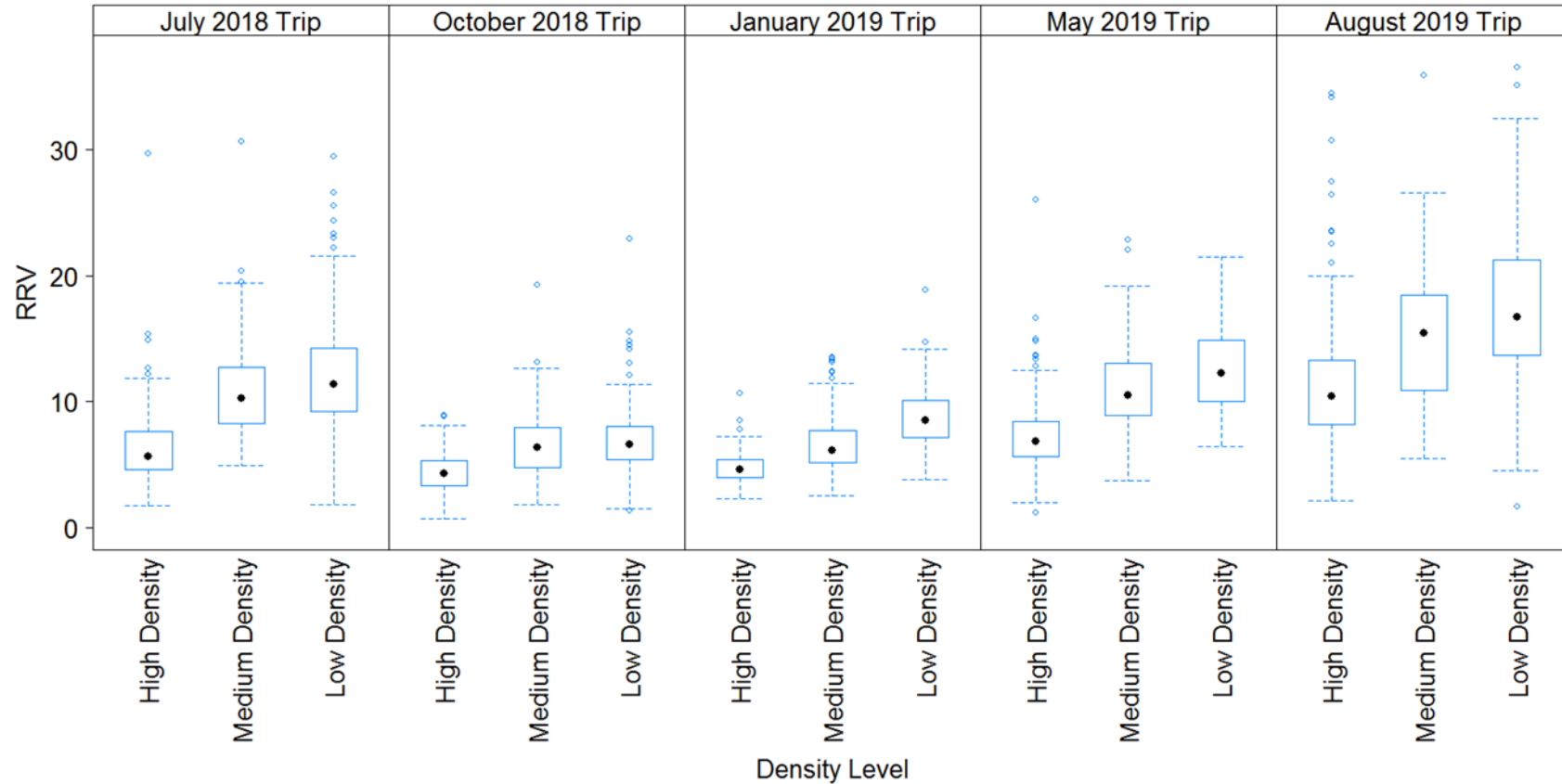
Meat Count



- Maximum meat weight in high density area variable - Table 1 in VIMS August 2019 NL Analysis

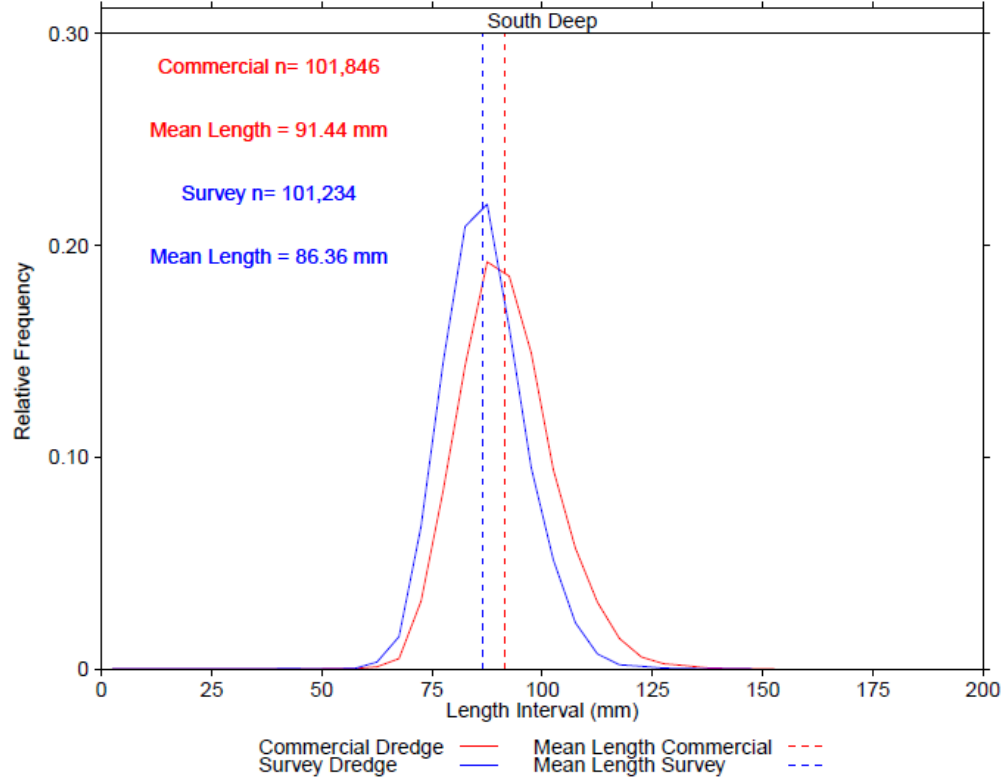
Density Dependent RSA Project

Reproductive Potential



- Boxplots of Residual Reproductive Value (RRV) for individual scallops worked up for SHMW assessment by trip and density level. $RRV = (Pg / (Pg + Ps)) * 100$, where Pg is gonad weight and Ps is meat weight + viscera weight.

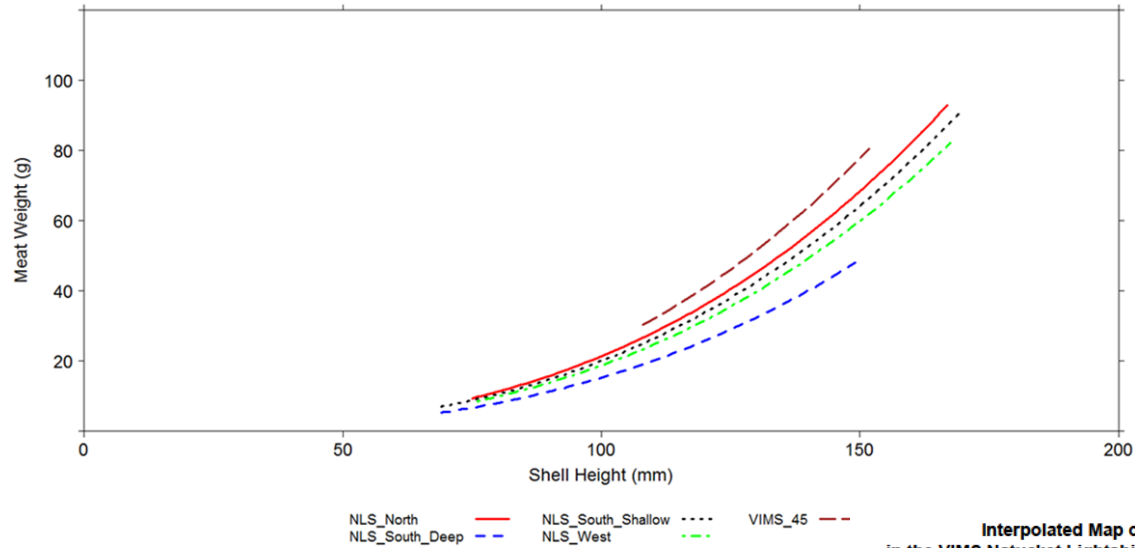
2019 NL Survey Length Distributions



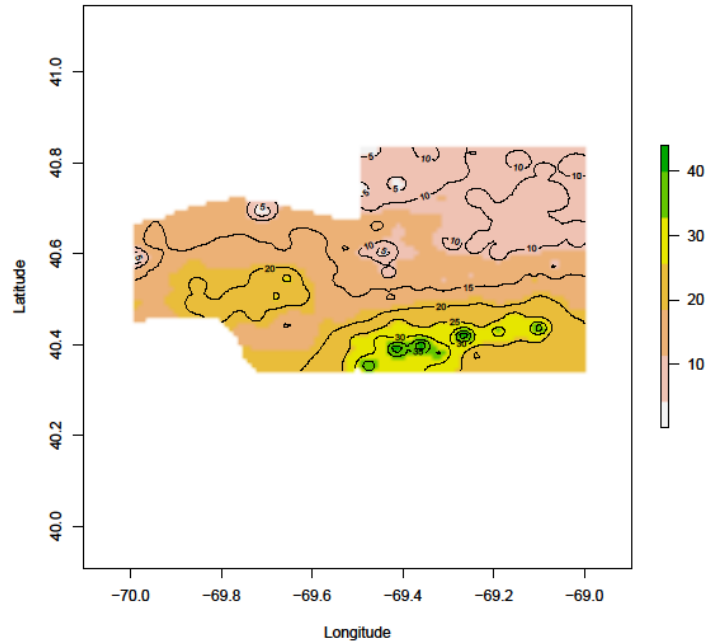
- Mean length increased in 2019
 - 2018
 - Survey – 78.4 mm
 - Com – 83.6 mm
 - 2017
 - Survey – 77.7 mm
 - Com – 85.5 mm
- Variability around mean length in 2019
- Growth observed beginning in January of 2019



2019 NL Survey Meat Weight & Quality

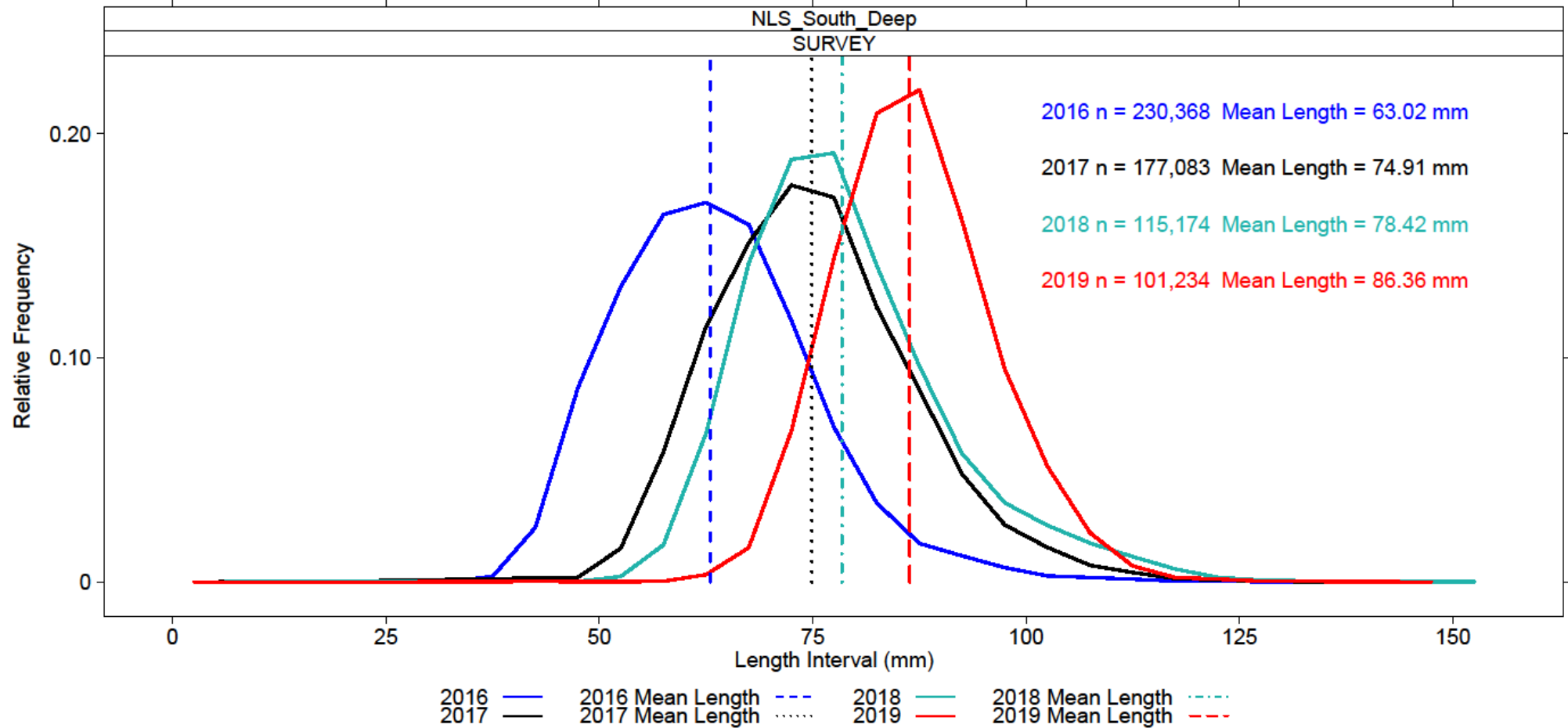


Interpolated Map of Scallop Meat Counts Per Pound in the VIMS Natucket Lightship Survey Domain for the Commercial Dredge



- South Deep has lowest SHMW relationship
- Mean weight 2019:
 - Total – 10.11 g
 - Exploitable – 14.63 g
- Exploitable mean weight only increased by 0.41 g. 2018 mean weight – 14.22 g
- Meat count is mostly 30-40 for commercial dredge
- Meat quality assessed as excellent for color and texture
- No nematode lesions

2016 - 2019 NL Survey Length Distributions



2016 - 2019 NL Survey Length Distributions

