

Scallop Survey Data/Framework 30 Planning
Discussion Document
July 19, 2018

Some Key Issues For Discussion:

1. Timing, and format of survey data when sent to the NEFSC (seeking group input)
2. Standardizing format of data/meeting materials prepared by survey groups for 2-day August PDT meeting.
3. Standardizing SAMS outputs for Framework Actions (ex: adding F, LPUE by SAMS area for use in comparing alternatives)
4. Timeline for the development of FW30 Specifications

Draft Objectives:

1. Clarify expectations around survey data collection and timeline for submission to Council, NEFSC
2. Identify potential decision points in the FW30 specifications process, and determine if steps can be taken to address them/reduce workload in Aug./Sept.

Questions/Clarifications for the Group (continue discussing in August):

1. What SH/MW parameters are we using for the FW30 SAMS runs?
 - a. Continue to use CASA estimates from SARC65 for GB and MA, with depth and latitude covariates?
 - b. Generate new SH/MW relationships for each SAMS area – could add confusion with equations for each SAMS area.
 - c. VIMS dredge data
2. We may continue to see slow growth in the NLS, ET. If adjusted SH/MW parameters can be developed by VIMS and circulated ahead of the meeting, is it reasonable to calculate them before the August PDT meeting, and have groups prepare two estimates. (with and without)
 - a. This would give us the benefit of comparing the change in parameter estimate at that meeting.
3. Thoughts on adding Stellwagen South/North SAMS areas?
4. What are the key data outputs that each survey group should prepare for the 2-day meeting.
5. Dredge estimates in high density areas were increased by a factor of 3 for SARC 65. Should we consider this approach for 2018 survey estimates? (Need to see the data first – but we can discuss the potential approaches for survey estimates in high density areas)
6. The small, slow-growing scallops in the Nantucket Lightship South were treated empirically in SARC 65 and were not part of the GB-Closed CASA model. Ben's VMS analysis showed no fishing in the deep portion of the NLS-S in FY2018 to date.
 - a. Like the benchmark, we could present estimates with and without these animals.
 - b. The PDT has spent a considerable amount of time as a group discussing the slow growing scallops in the NLS-South. These animals have not been fished, and are not growing normally.
 - i. Are there other parts of the resource that we should focus more on this year?
7. What else do we need to think about before August?

Potential Timeline for 2019/2020 Specifications Cycle

Date	Milestone	Comments
July 25, 2018	Scallop PDT discussion	
~August 1, 2018	RSA survey groups submit data to NEFSC <ul style="list-style-type: none"> Need to determine SH/MW parameters that will be used. 	
August 20, 2018	Survey groups submit materials for PDT mtg	This would include ppt, proposed standardized tables
August 25/26, 2018	Two-day PDT meeting, Falmouth, MA: <ol style="list-style-type: none"> Review survey results as group Consider/make adjustments to biomass calculations based on available data (ex: SH/MW) Consider configuration of SAMS areas GOAL: Leave meeting with agreed upon survey estimate values (May require additional PDT call)	
Sept. 6 or 7	HOLD FOR PDT Call: <ol style="list-style-type: none"> Finalize survey estimates if need be. Other spec related business/issues 	Is there a chance we could see OFL and ABC estimates on this call?
Sept. 13 & 14	Present SARC and Survey Results to AP/CTE	New Bedford, MA
Week of September 17 th (or 24 th , which is when the Council meets)	IN PERSON PDT to Discuss OFL and ABC estimates. <ul style="list-style-type: none"> Review draft of memo to SSC 	In the past, these estimates have guided SAMS Model runs. How about adding a more conservative sensitivity run to the mix, or keep F=0.38 (in addition to new OFL and ABC values)?
October 1 st or 2 nd	HOLD FOR PDT Call to review SSC memo, other FW30 issues	
October 10, 2018	SSC meets (TBD) – Approve OFL/ABC FW30	
Week of Oct. 22	Joint PDT/AP, and Committee Meetings	
Nov. 14, 15, or 16	HOLD FOR PDT MEETING, potentially in-person	
Week of Nov. 26	Potential for AP/CTE meetings to pick final preferred alternative	
Week of Dec. 4	Dec. Council – Final action FW30	

PROPOSAL SURVEY DATA FOR 2-Day August Meeting:

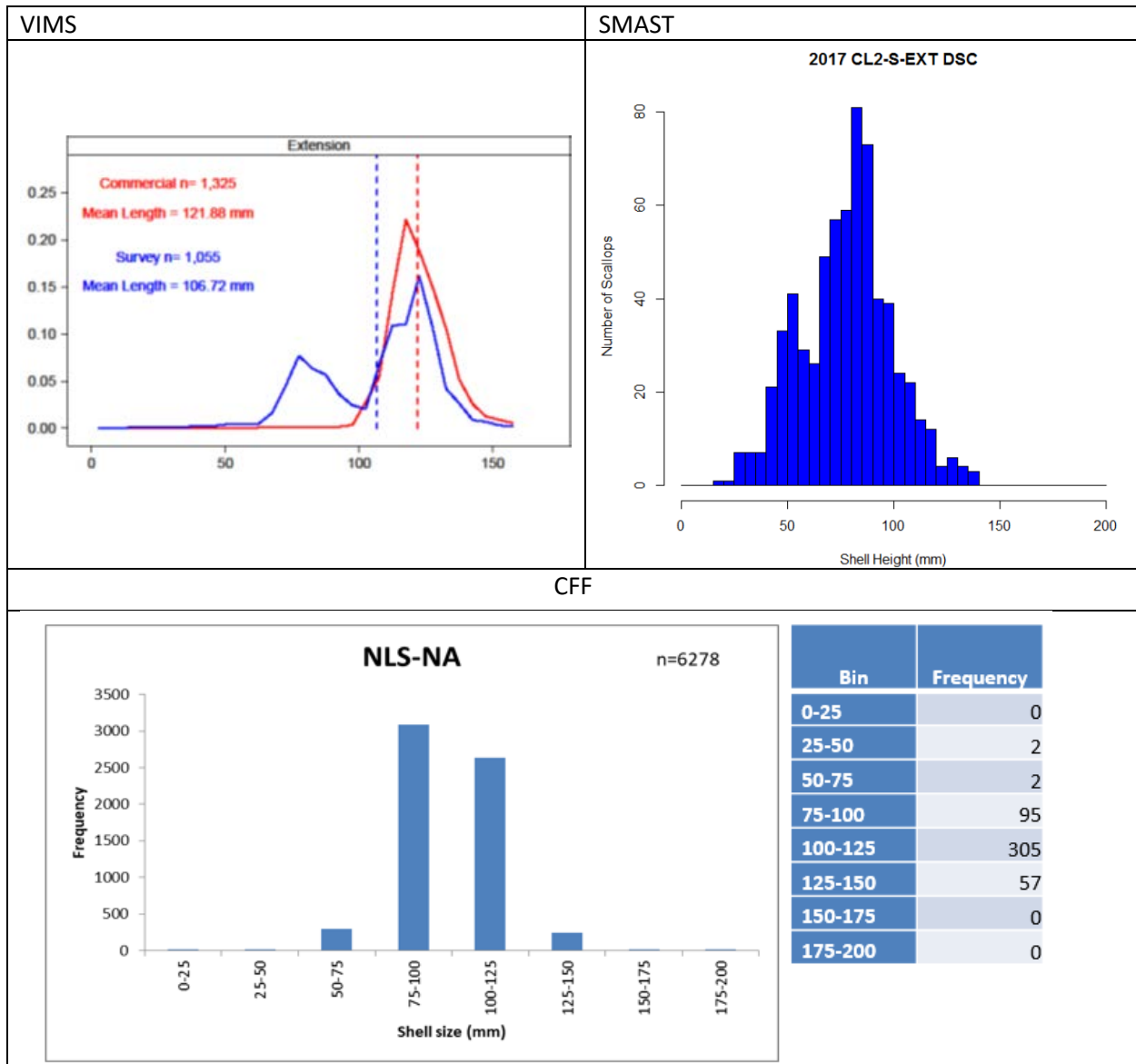
- Standardized stand-alone document from each survey group
- Standard table of survey biomass estimates from each group
 - Would look like the “master table” Dvora prepares
- Length frequency plot for each SAMS area surveyed
- Any Special comments
- Would be in addition to powerpoint presentations

Example of potential survey biomass table:

SAMS Area	NumMil	BmsMT	SE	MeanWT
NLS-W				
NLS-N				
LI				
ET				
CAII				
etc.				

Example of length frequencies by survey groups:

- Variation in presentation is fine, each group has their own look and feel.
- Are there suggestions from the PDT on what type of information is useful to present?



PROPOSAL FOR SSC MEMO and Sept/Oct AA/CTE meetings:

- Could be compiled by Council staff in coordination with survey groups and Dvora

	2018 BmsMT			2018 Combined				2019 Projections		2020 Projections	
SAMS Area	Dredge	Drop Cam	Hab Cam	NumMil	BmsMT	SE	MeanWT	Exploitable biomass at OFL (mt)	Exploitable biomass at ABC (mt)	Exploitable biomass at OFL (mt)	Exploitable biomass at ABC (mt)
COMMENT:	Available From Survey Groups			Compiled by Dvora				From Dvora - SAMS model outputs			
NLS-W											
NLS-N											
LI											
ET											
CAII											
etc.											

PROPOSAL FOR FW Document: Table for Framework final preferred alternative:

	2018 BmsMT			2018 Combined				2019 Projections (Final Preferred)			
SAMS Area	Dredge	Drop Cam	Hab Cam	NumMil	BmsMT	SE	MeanWT	Exploitable biomass at OFL (mt)	Exploitable biomass at ABC (mt)	Estimated F	Estimated LPUE
COMMENT:	Available From Survey Groups			Compiled by Dvora				From Dvora - SAMS model outputs			
NLS-W											
NLS-N											
LI											
ET											
CAII											
etc.											