

Additional Measures to Reduce Fishery Impacts & Consideration of Seasonal Closure of CAII-Ext

Sam Asci (Council Staff)

October 23rd, 2018 Scallop AP/PDT
October 24th, 2018 Scallop Committee



New England
Fishery Management Council

Measures to reduce fishery impacts

- Alternatives in annual frameworks that focus on where RSA compensation fishing can occur.
 - No Action: RSA compensation fishing can only occur in open areas.
 - “Action” alternative to allow RSA comp fishing in access areas.
- Council may wish to restrict compensation fishing in some areas to reduce impacts on small scallops, bycatch, or to limit overall harvest from an area.

RSA Compensation fishing

RSA Fishing Area	Percent caught	
	2017	2018
ET	0%	0%
MAA	12%	19%
OPEN	88%	27%
CAI	0%	18%
NLSS	0%	20%
NLSW	0%	16%
Grand Total	100%	100%

PDT Recommendations:

- Do not allow RSA compensation fishing in:
 - CAI: impacts on available biomass
 - CAII and CAII-ext: impacts on GB yellowtail
- Allow RSA compensation fishing in:
 - All other open access areas (likely NLS-W and MAAA)
 - All open bottom
- RSA comp fishing would be capped at LA share NGOM TAC in 2019 (same as FW29).

CAI-ext and GB Yellowtail

- GB yellowtail sub-ACL expected to be low in FY2019.
- In-season VMS showed consistent fishing in CAI-ext and surrounds since FY2018 start
- Groundfish FW 58: Alternatives to modify AM trigger for scallop fishery (only if ACL is exceeded) for 2 years

	YT ABC	US Share	Scallop 'ABC'	Scallop 'sub-ACL'	150% of sub- ACL
	FY2017	76%	16%	95% of ABC	
US TAC (106 mt)	140 mt	106 mt	~17 mt	~17 mt	~25mt

CAII-ext and GB Yellowtail

- Based on the poor status of Georges Bank yellowtail...

PDT Recommendations from September 28, 2018 meeting

1. Consider seasonal closure of CAII-ext
 - CAII: Aug. 15 – Nov. 15 (initially proposed)
 - Later in the year (Nov. – Dec.) – see slides 11 & 12
2. Restrict RSA comp fishing in CAII/CAII-ext to reduce impacts on GB yellowtail.

GB yellowtail d/K by TENMINSQ

PDT follow-up: review observer data from August 1 – 14 and November 16 – 30. Look at d/K ratios during these time periods.

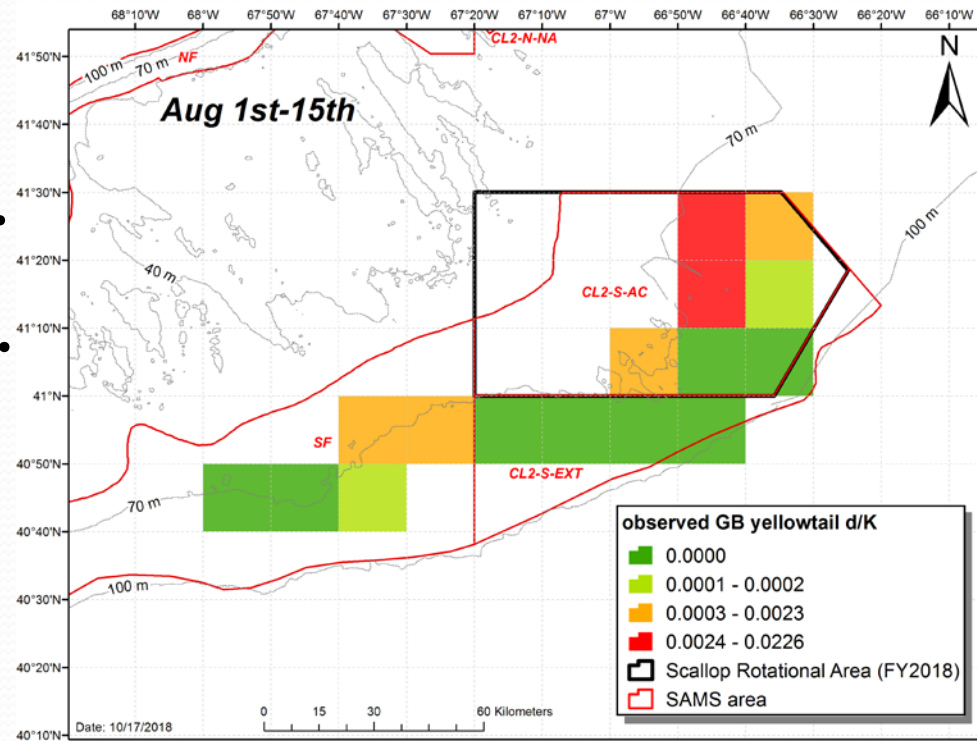
- Combined biweekly NEFOP haul records by ten minute square—March 1, 2017 through August 24th, 2018 (most recent available).
- GB yellowtail d/K estimated for ten minute squares with ≥ 5 observed hauls.
- K = round weight (lbs) of kept scallops
- d/K ‘stoplight’ scale is quartile range across the time-period.

Caveats

- Mar 2017-Aug 2018 data used to gauge reasonable expectation of GB YT catch in near future
- **CAII-ext was closed in FY2017**
 - FY2018 data available through end of Aug → NEFOP hauls not available to inform expected bycatch in CAII-ext from Sep-Mar.
- Compare d/K figures to FY2018 VMS effort to date to make inferences on bycatch timeline (refer to slides 16-25 for monthly effort maps)

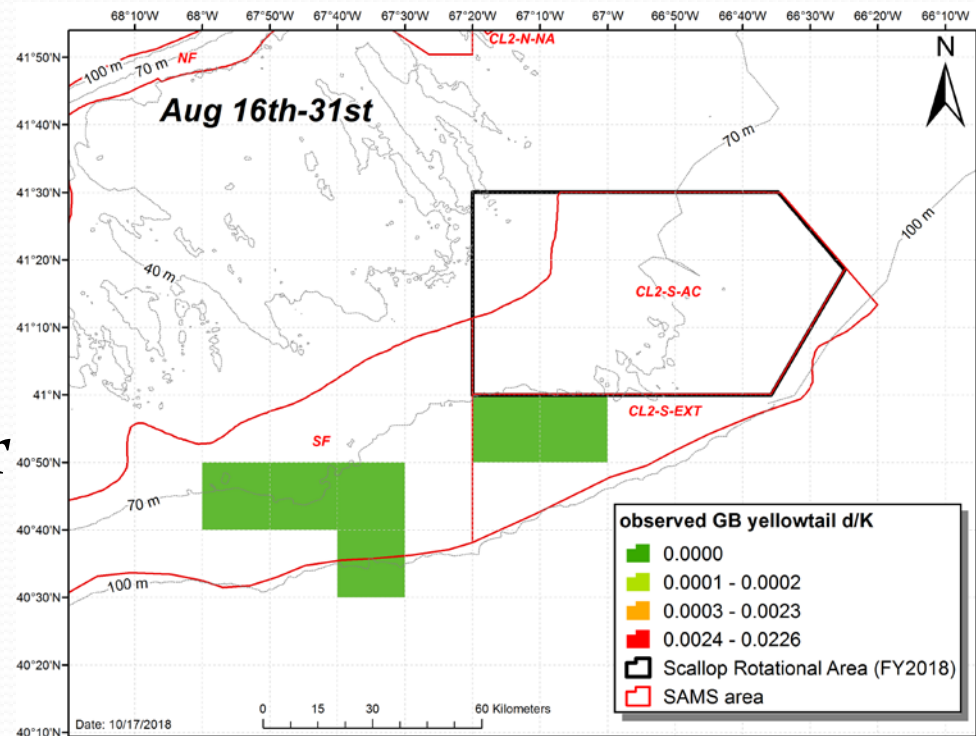
August 1st to August 15th

- d/K highest in CAII AA, essentially no bycatch in CAII ext.
- Some bycatch in SF.
- Roughly 1/3rd of Aug-18 effort in CAII-ext/SF



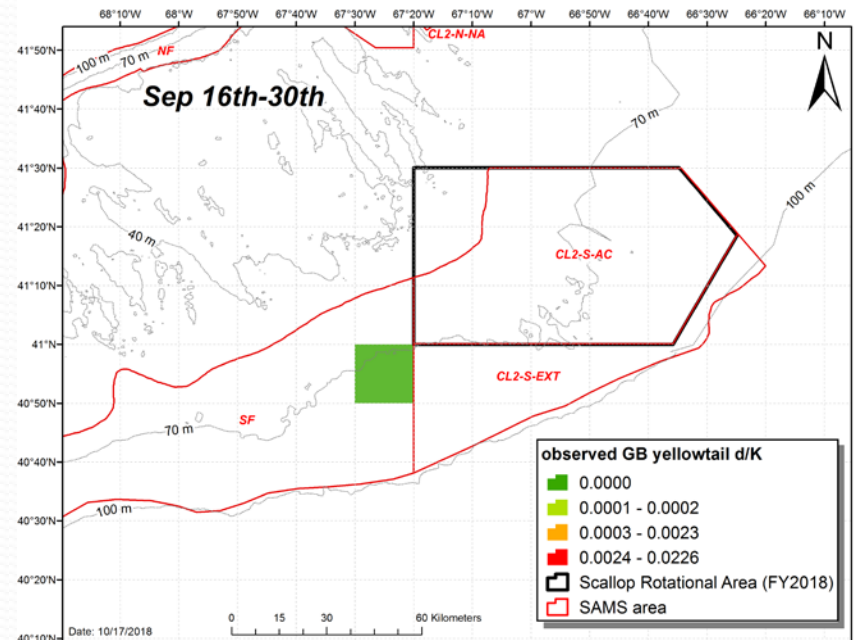
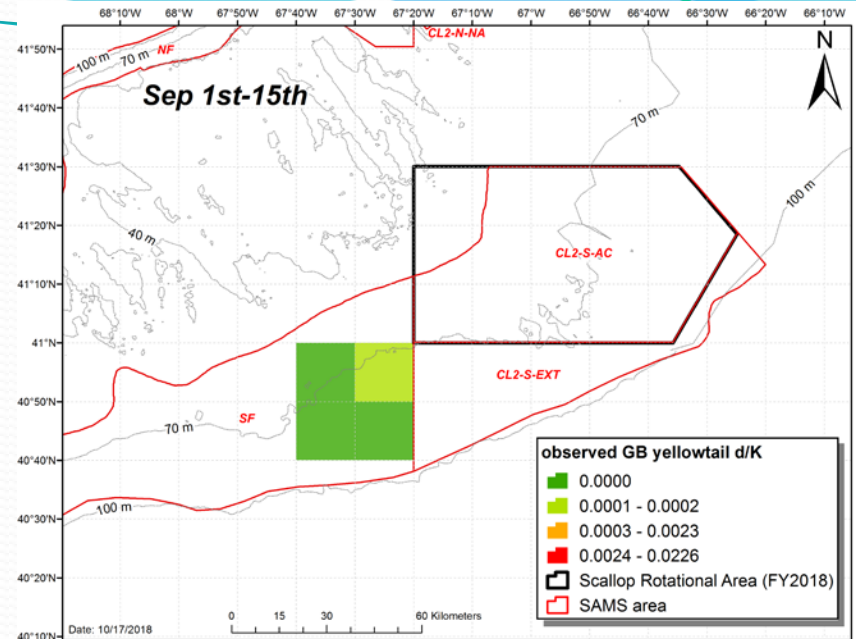
August 16th to August 31st

- CAII AA seasonal closure begins, effective through November 15th.
- Effort in CAII ext/SF follows similar contour as Aug 1-15, essentially no GB yellowtail bycatch observed.



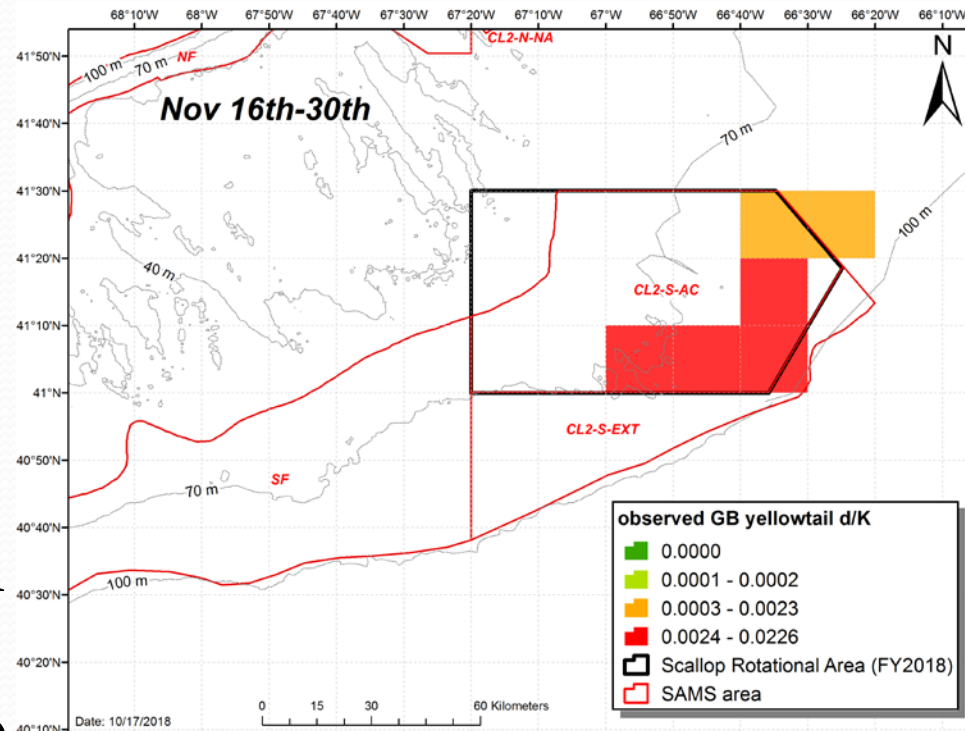
Sep 1st-15th, 16th-30th

- VMS data shows fishing occurring in CAII ext in Sep 2018, observed hauls only available for Sep 2017.
- GB yellowtail bycatch in SF very low in September



November 16th-30th

- Immediately after CAII AA seasonal closure (Aug 15-Nov 15)
- Higher d/K in CAII AA compared to Aug 1-15.
 - Could anticipate similar bycatch in CAII ext directly south of CAII AA boundary → supported by FW29 analysis

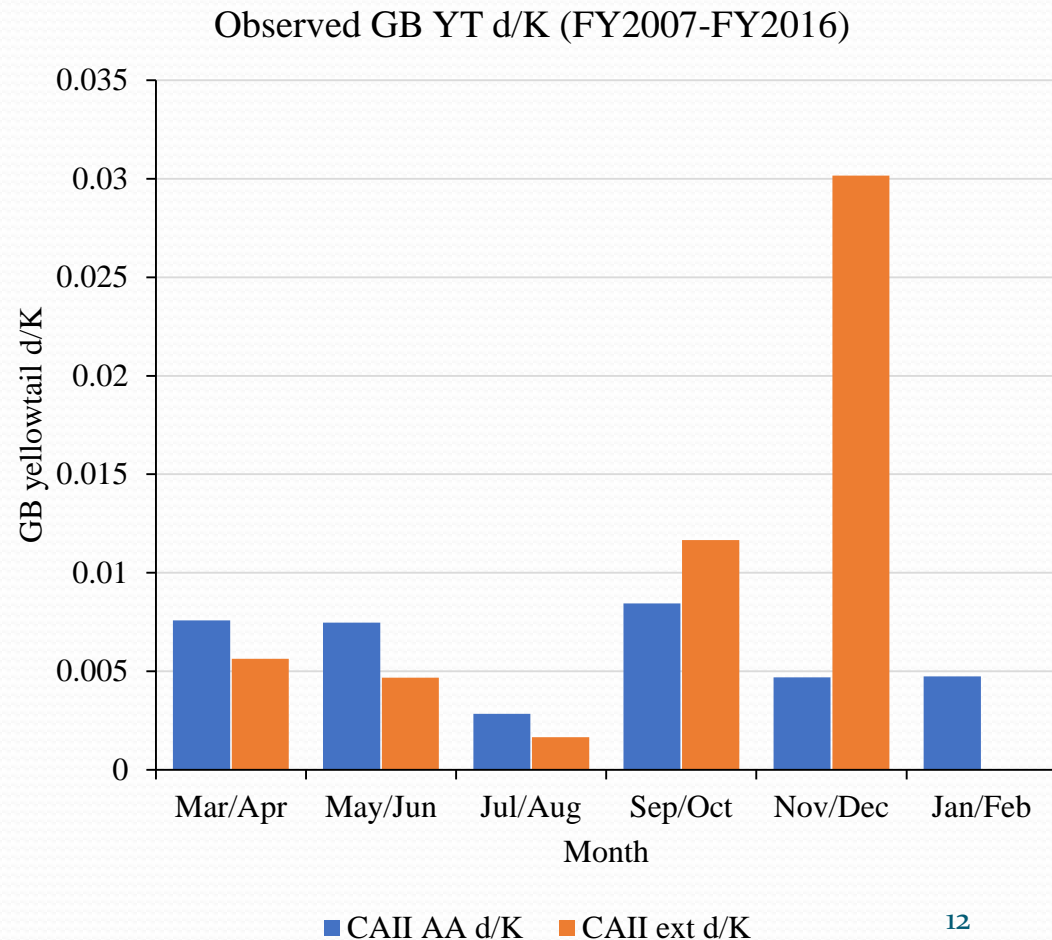


FW29 CAII-ext bycatch analysis

Appendix II—Flatfish AM Development

- GB yellowtail d/K in CAII-ext at highest in Sep-Dec

Figure 16. Observed bimonthly yellowtail d/K in Closed Area II AA (blue) and Closed Area II extension (orange). Data used were from FY2007-FY2016.

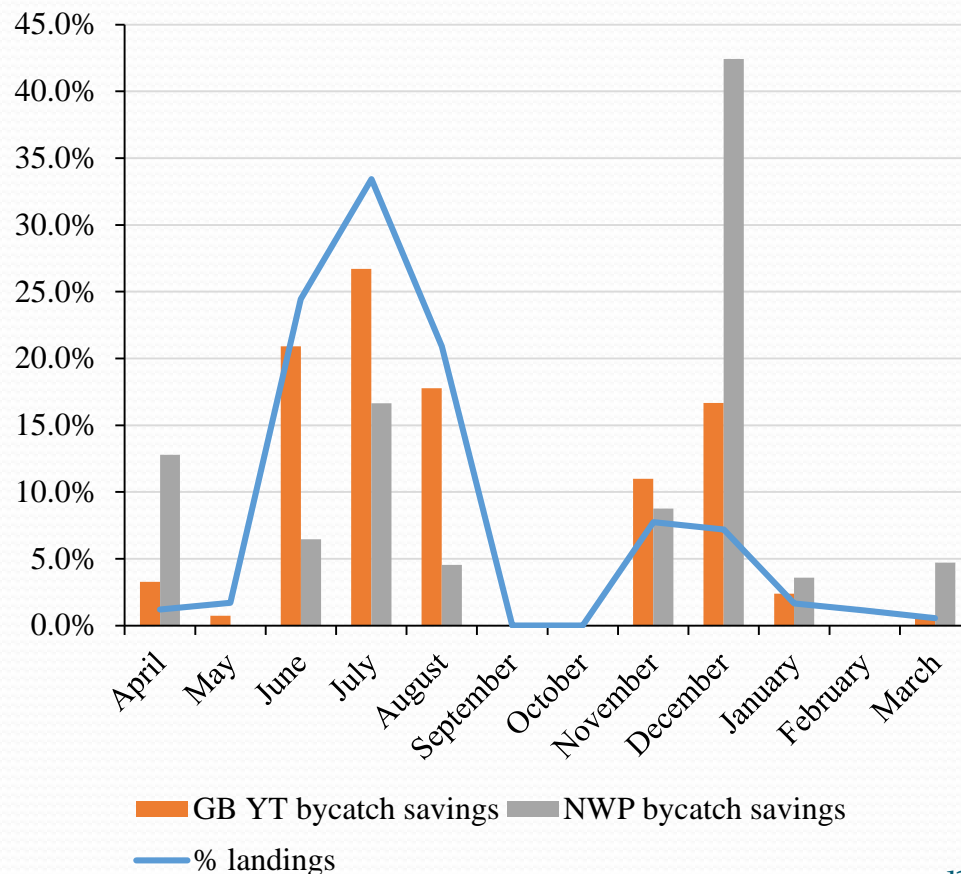


FW29 bycatch savings analysis

Nov-Dec in CAIIAA:

- landings reasonably less relative to summer months,
- bycatch savings were generally higher

Figure 15. Monthly GB yellowtail and N. windowpane bycatch savings gained by not fishing Closed Area II AA. The blue line shows the percentage of landings from Closed Area II AA by month. Fishery data used were from 2013-2015.



Restrict RSA fishing in CAII-ext

- Roughly 27% of 2018 RSA fishing has been in open areas
- Majority of FY2018 open bottom effort focused in CAII-ext/SF.
- If trend continues in FY2019, argument for restricting comp fishing in CAII-ext to mitigate GB yellowtail bycatch.

RSA Fishing Area	Percent caught	
	2017	2018
ET	0%	0%
MAA	12%	19%
OPEN	88%	27%
CAI	0%	18%
NLSS	0%	20%
NLSW	0%	16%
Grand Total	100%	100%

Note: roughly 21% of 2018 RSA comp fishing complete as of 10/16/18.

Framework 30

- Looking for AP and Committee input on measures to include for analysis in FW₃₀.
 - *Select final preferred alternatives in Nov.*
- 1. *Where RSA fishing can/can't occur*
- 2. *Seasonal closure of CAII-ext? If interested:*
 - *Timing and boundary*
 - *Duration? Ex: 1 year vs. permanent*

Supporting information

Monthly effort in SE Parts, April-
September 14th, 2018.

FY2018 monthly VMS effort

- Combined LA and LAGC VMS hours fished by month, April 2018 through September 14th, 2018.

Source: B. Galuardi (GARFO)

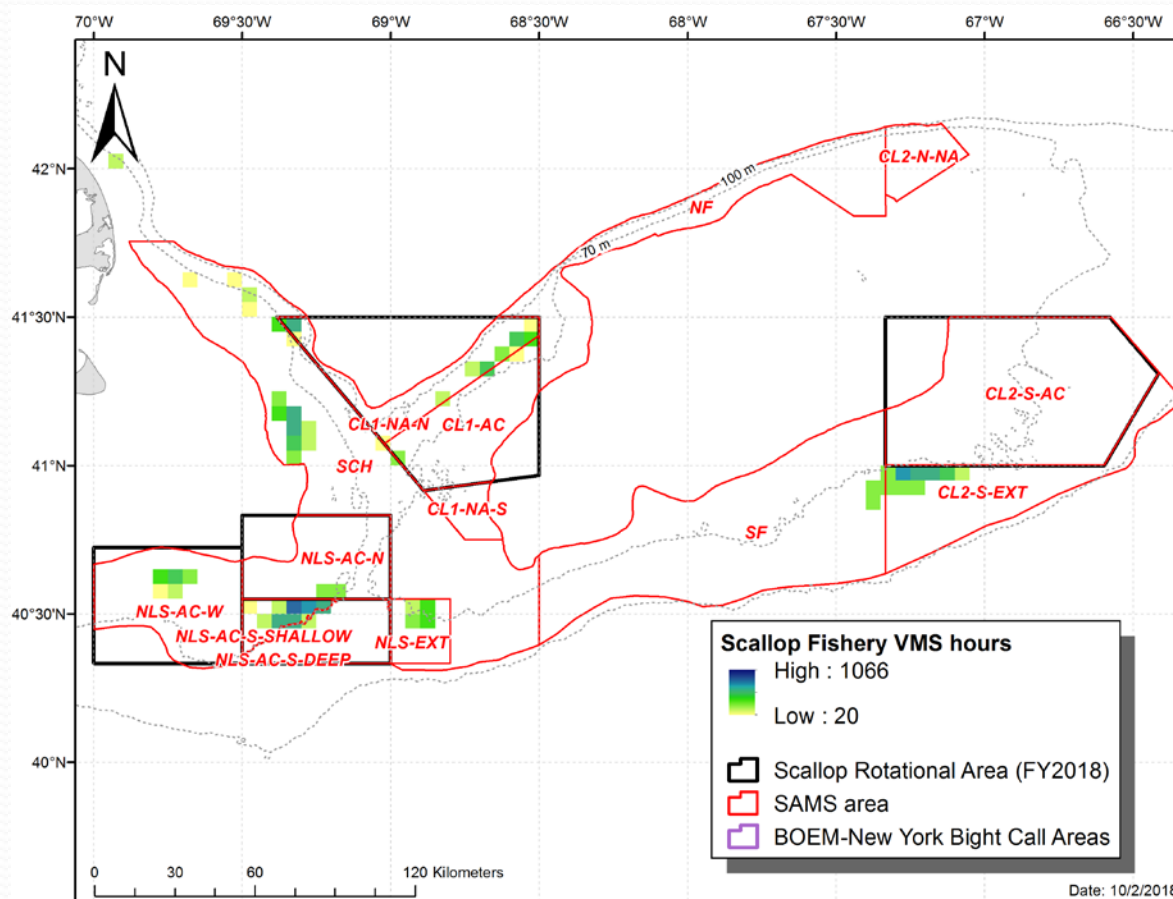
- Data is combined scallop fishery VMS pings by month.
- Sum of polls x time (30 min/poll) = total hours
- Maps aggregated at 3 nm squares. Minimum 20 hours in each square.
- 2-5 kt speed filter applied.

FY2018 effort in CAII-ext/SF

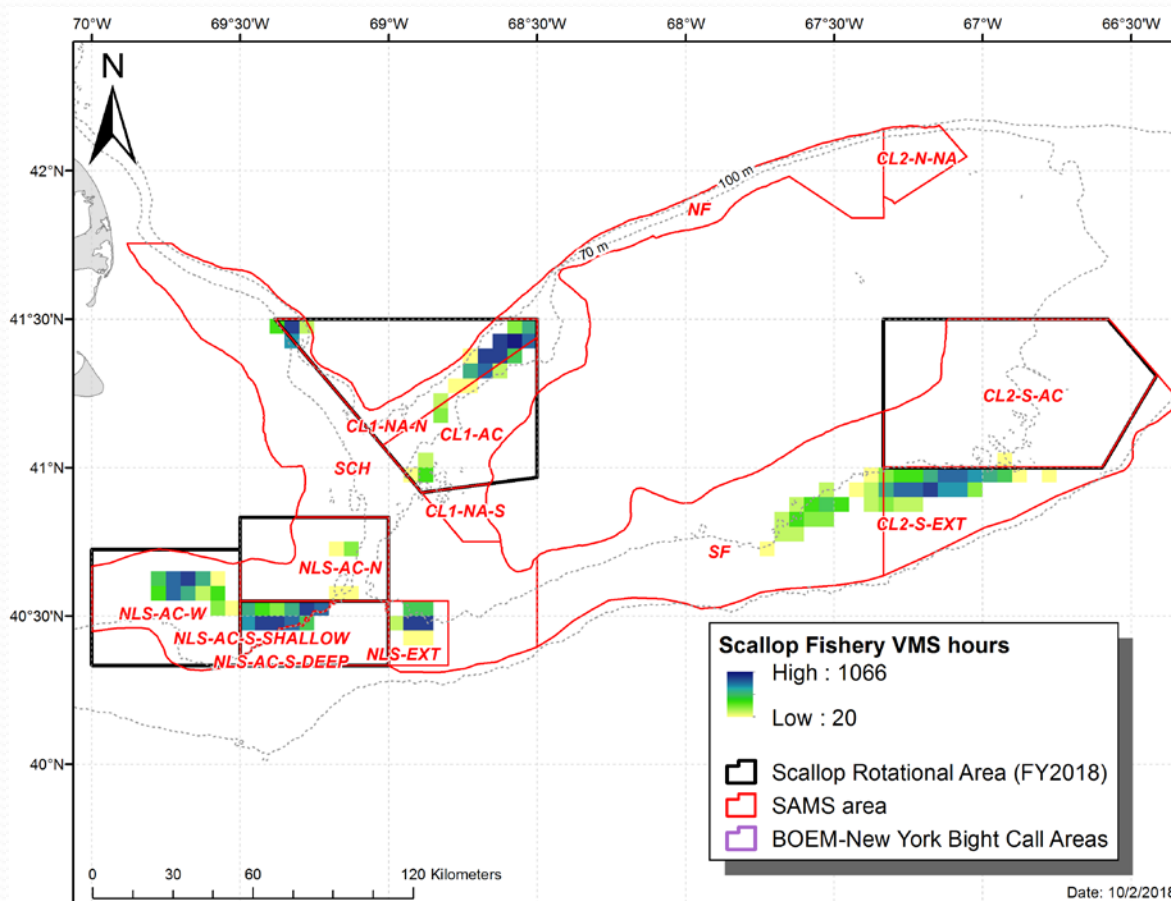
- VMS hours fished by SAMS area between April and September 14th.
- ***27⁰% of all fishing directed in CAII-ext/SF***

Month	CL2-S-EXT	SF	total hours	fishery total	perc of fishery total
April	974	111	1,085	22,867	5%
May	3,299	844	4,143	22,605	18%
June	4,131	3,939	8,070	24,302	33%
July	6,220	3,923	10,143	20,718	49%
August	4,880	2,584	7,464	22,160	34%
September	757	117	874	5,935	15%
Total	20,261	11,518	31,779	118,587	27%

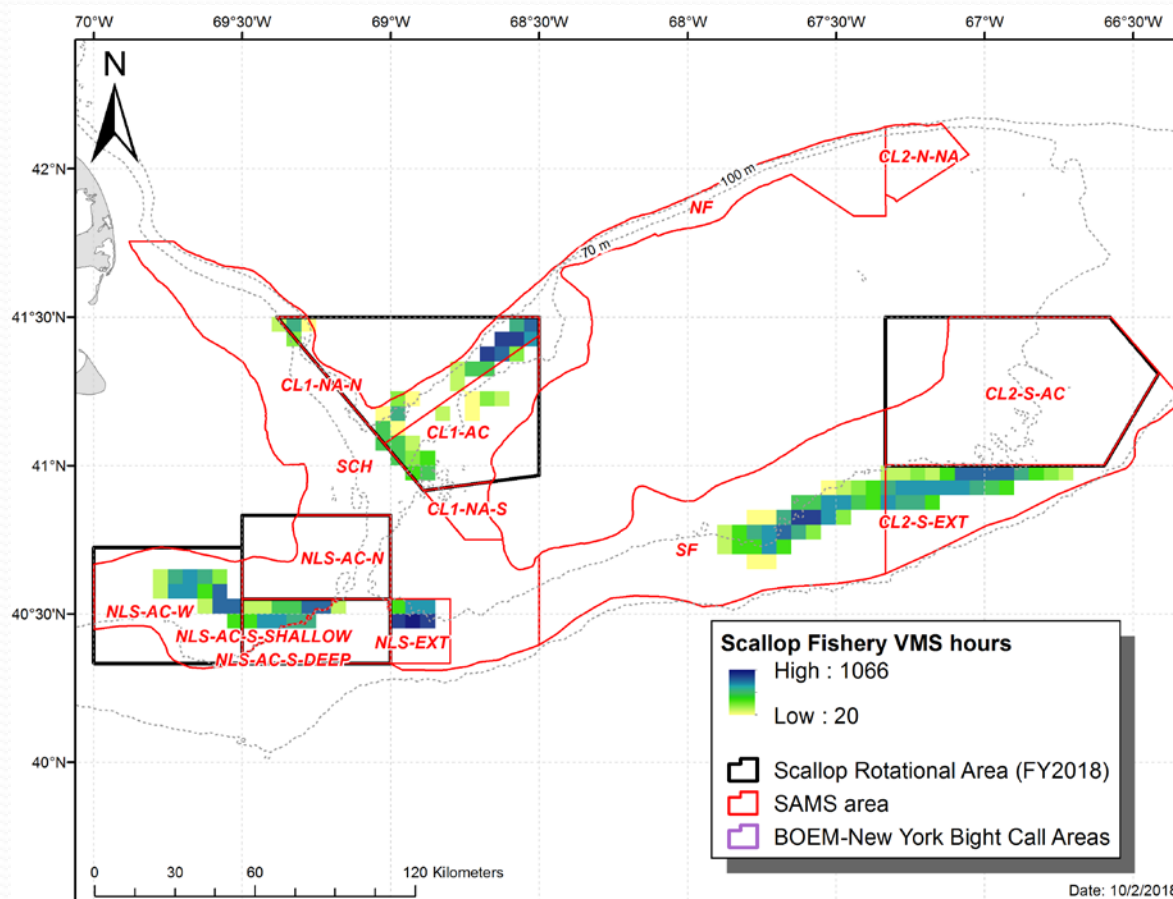
April 2018



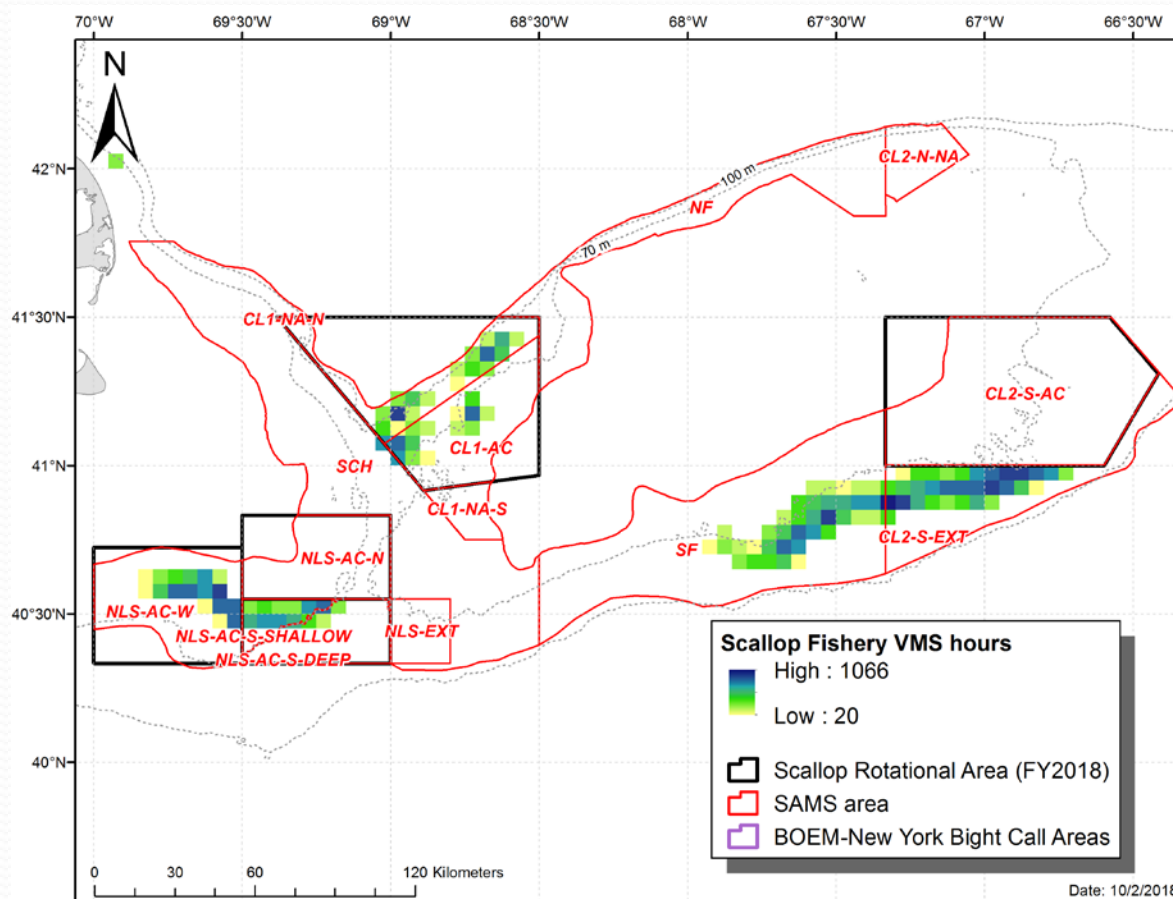
May 2018



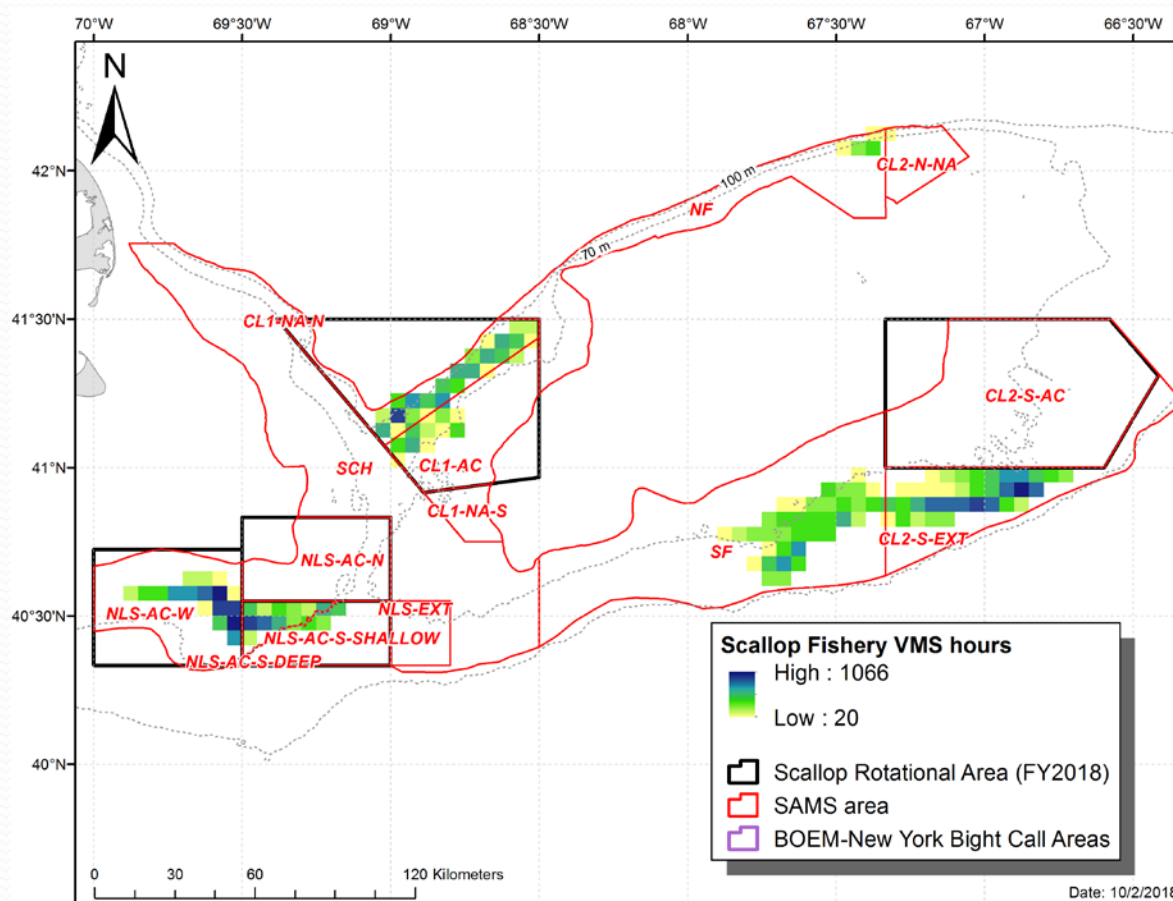
June 2018



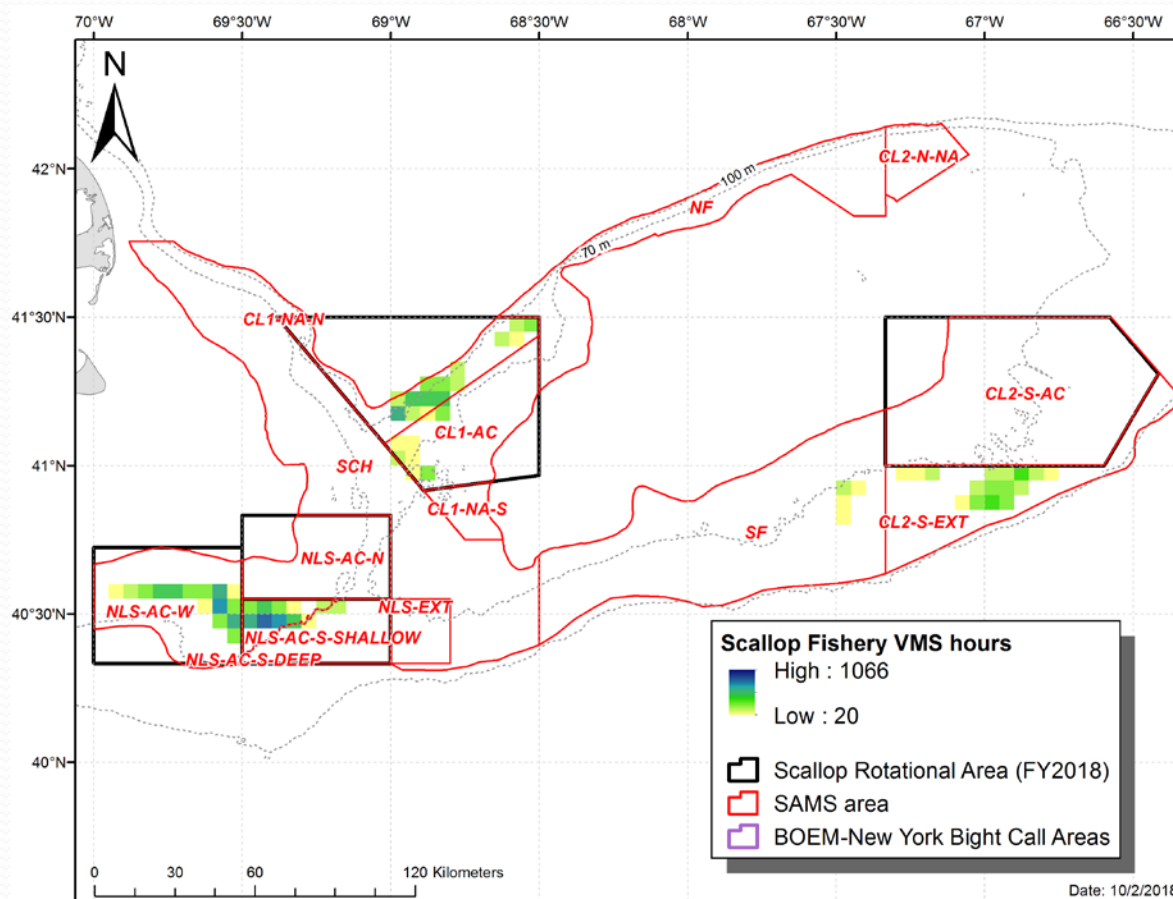
July 2018



August 2018



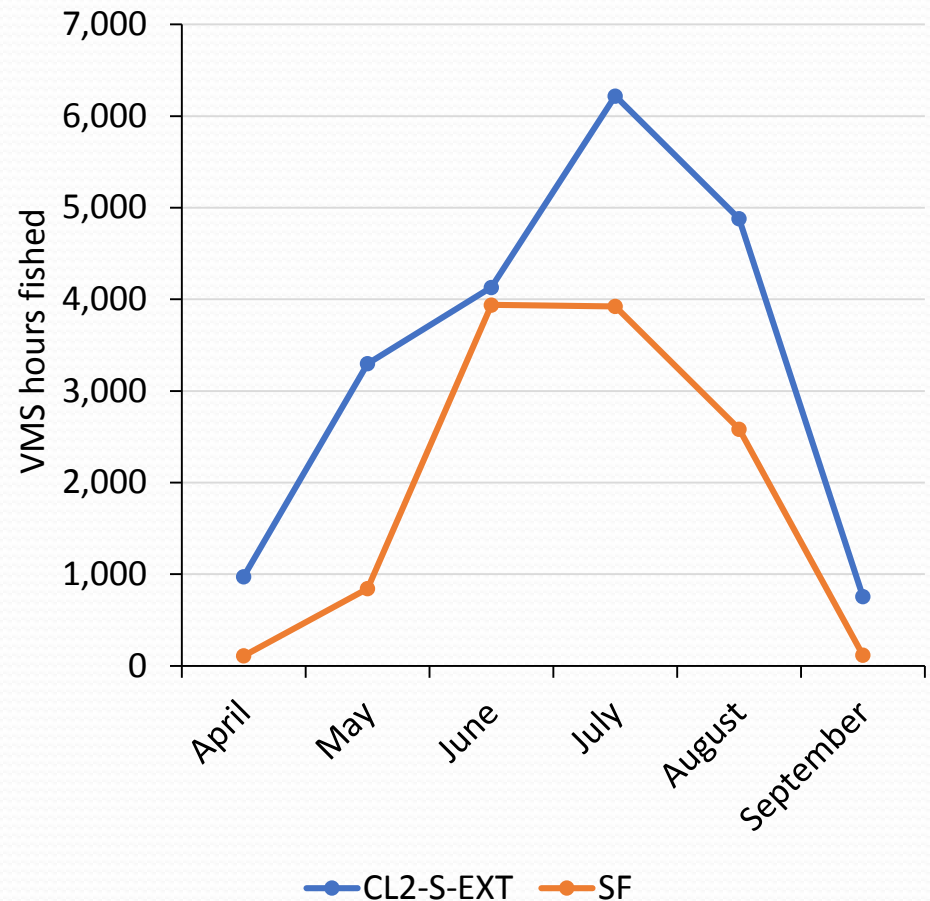
September 2018



Note: data shown are through Sept 14th.

FY2018 VMS hours fished, SE parts

- Monthly VMS effort in open area SAMS south of CAII.
- Effort highest in June-August.
 - Seasonal closure in CAII AA is Aug 15th-Nov 15th



Note: data shown are through Sept 14th.