

Gulf of Maine Trawl Data

Samuel Ascì

Council Staff

May 22nd, 2017



New England
Fishery Management Council

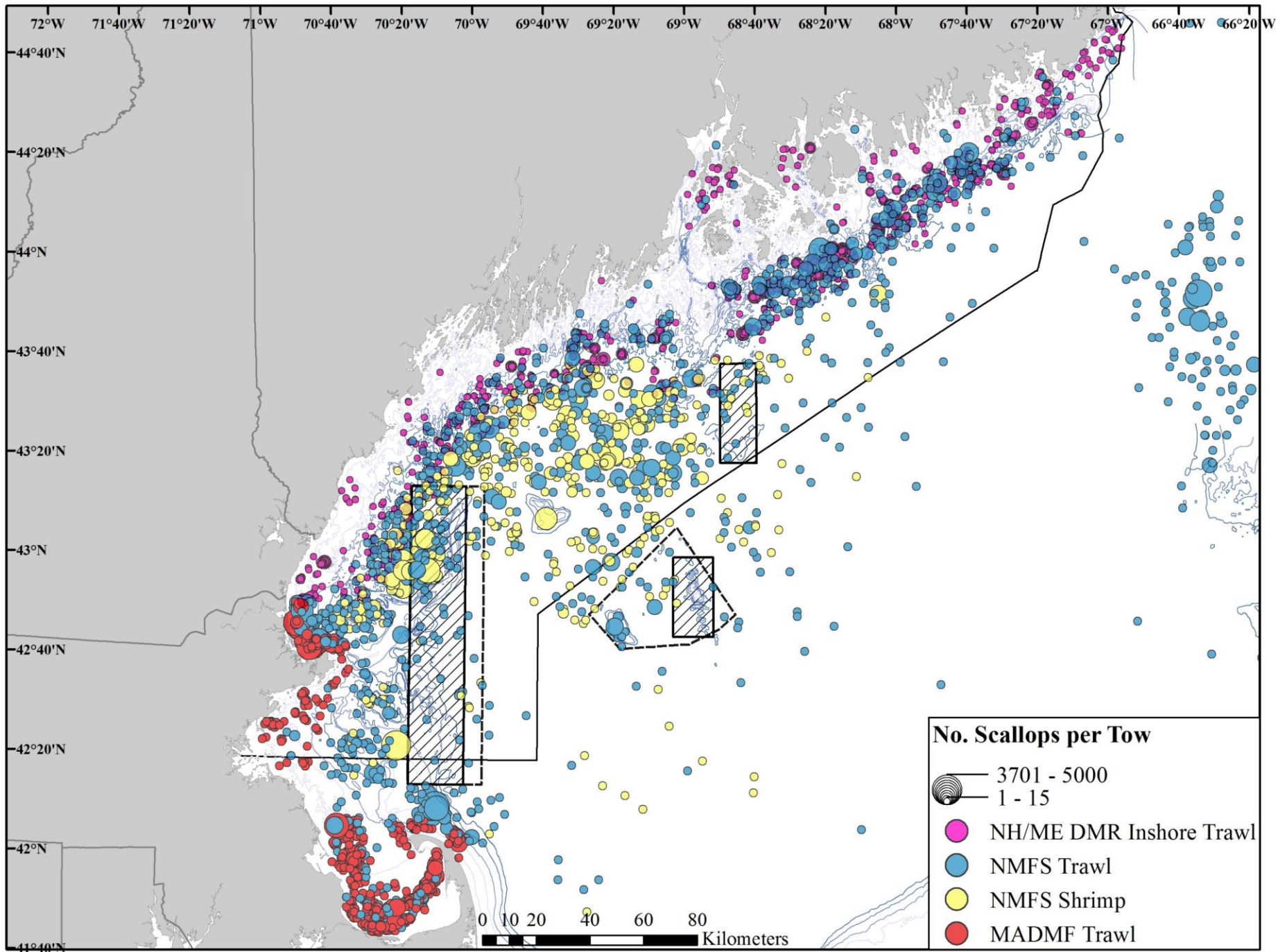
Surveys in the Gulf of Maine

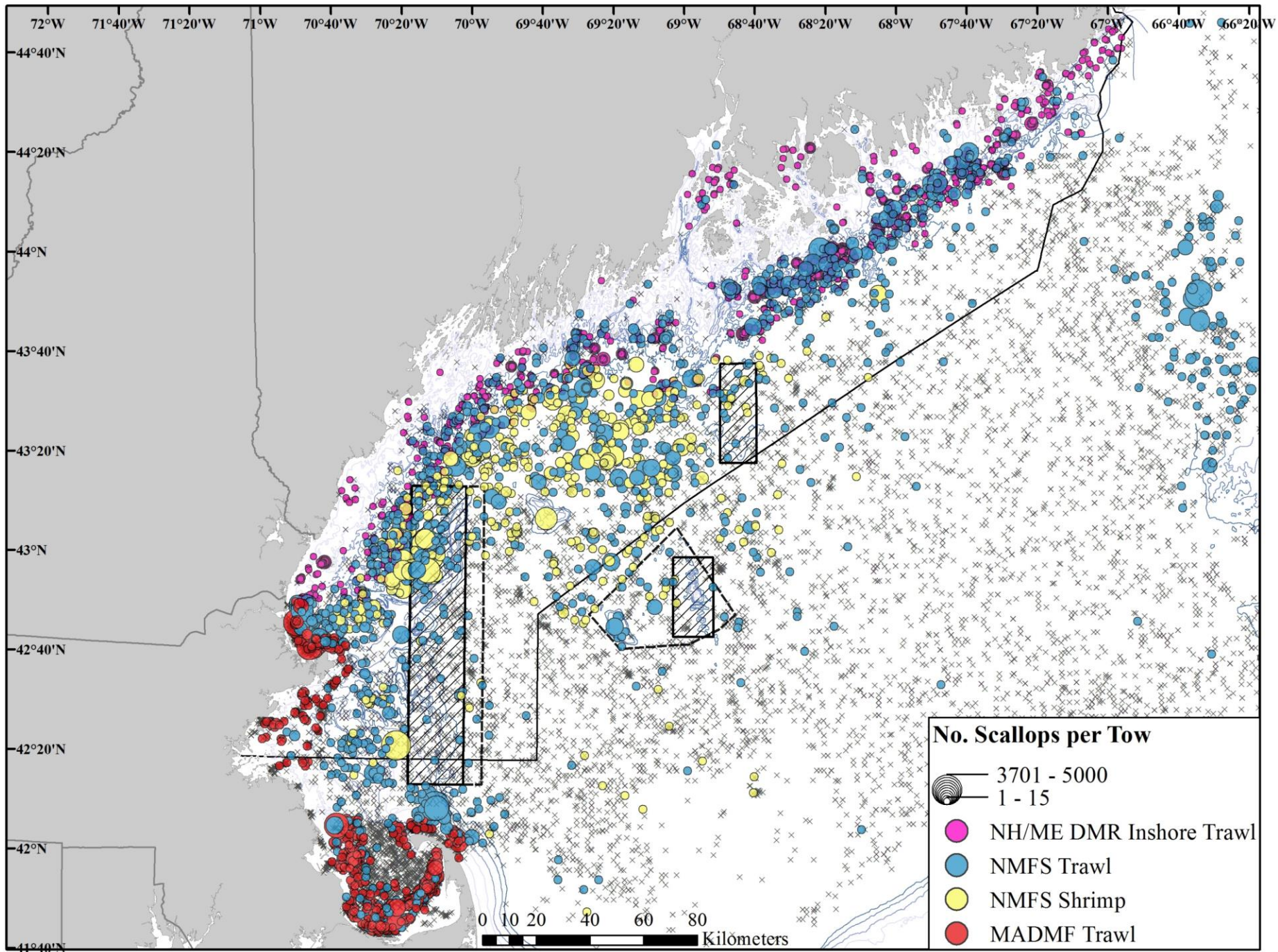
The following figures include data from:

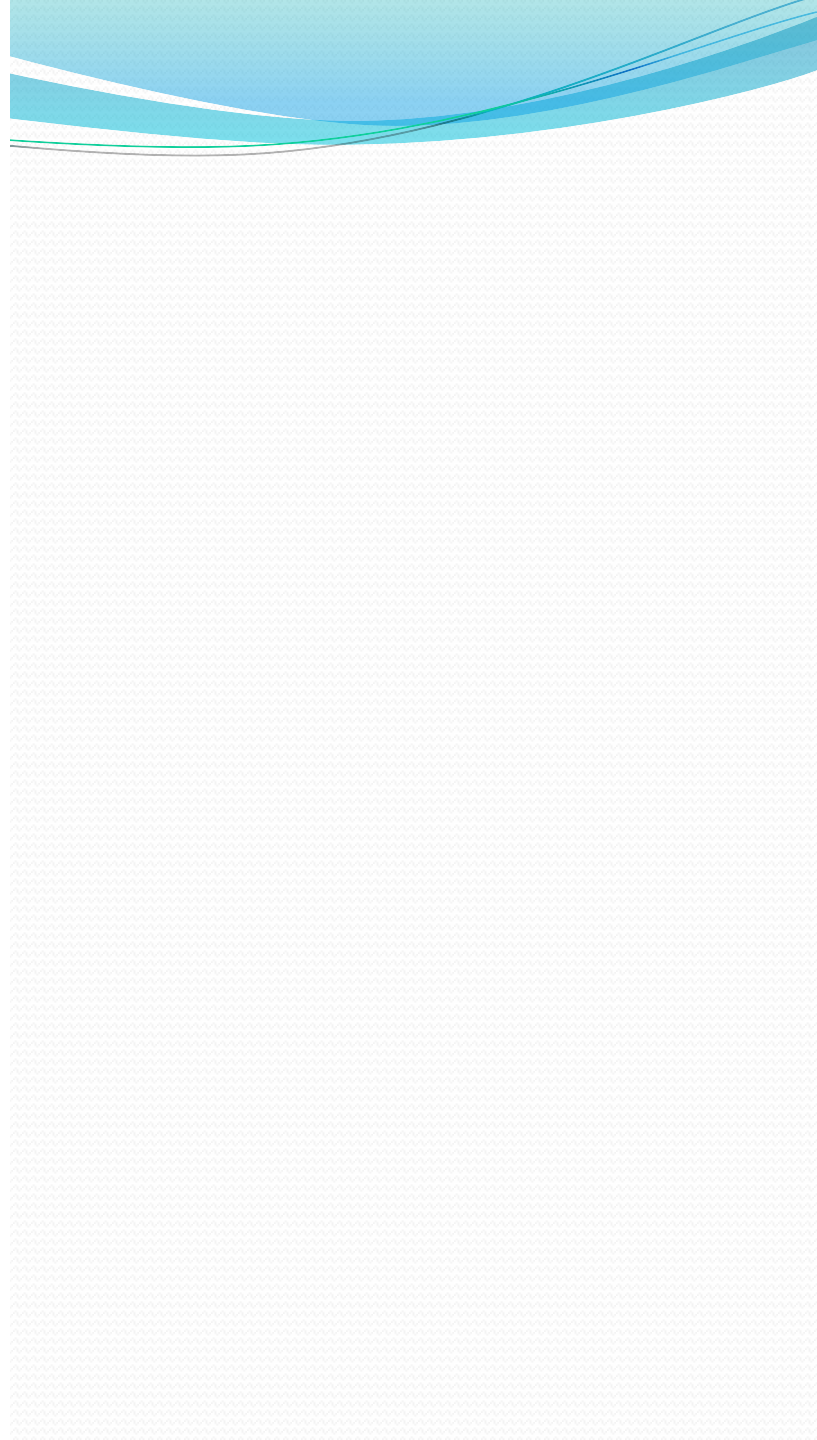
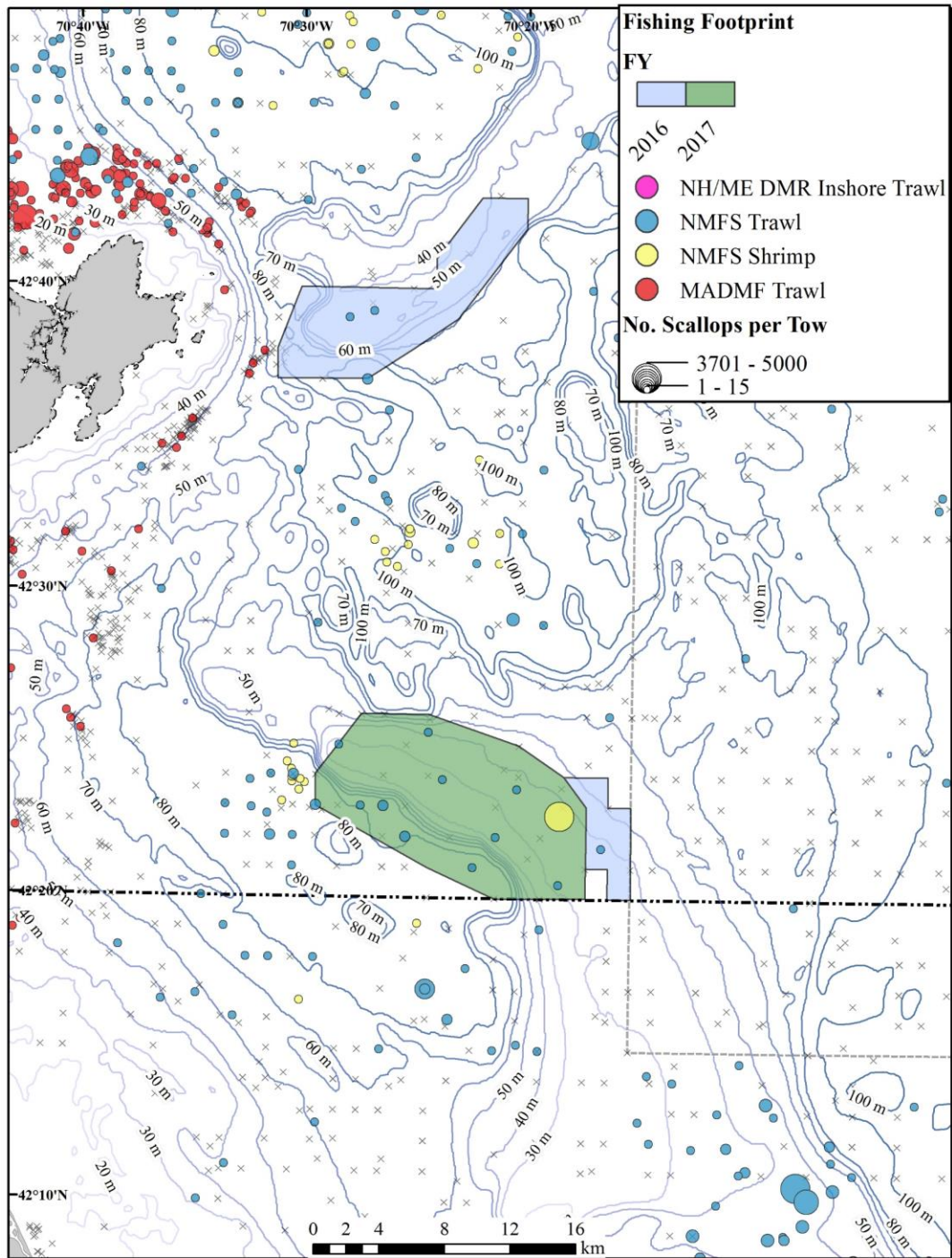
1. NMFS Bottom Trawl (1963-2014)
2. NMFS Shrimp Trawl (1983-2014)
3. MADMF Bottom Trawl (1978-2014)
4. NH/ME DMR Inshore Trawl (2000-2012)

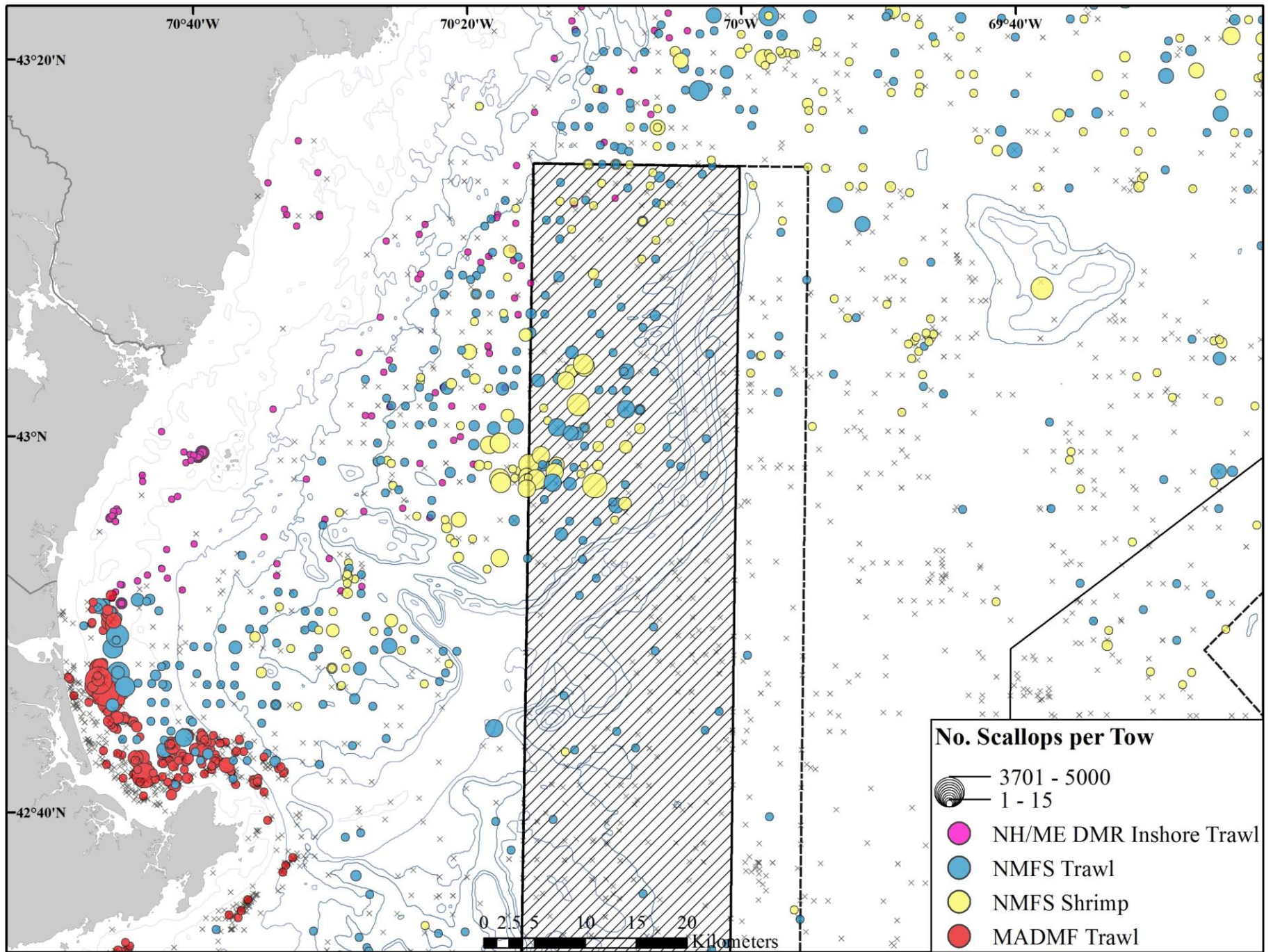
Data points correspond to the number of scallops observed at a given tow. *Black “x” marks represent tows with no scallops.

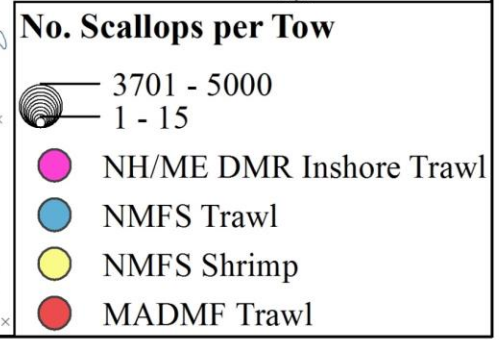
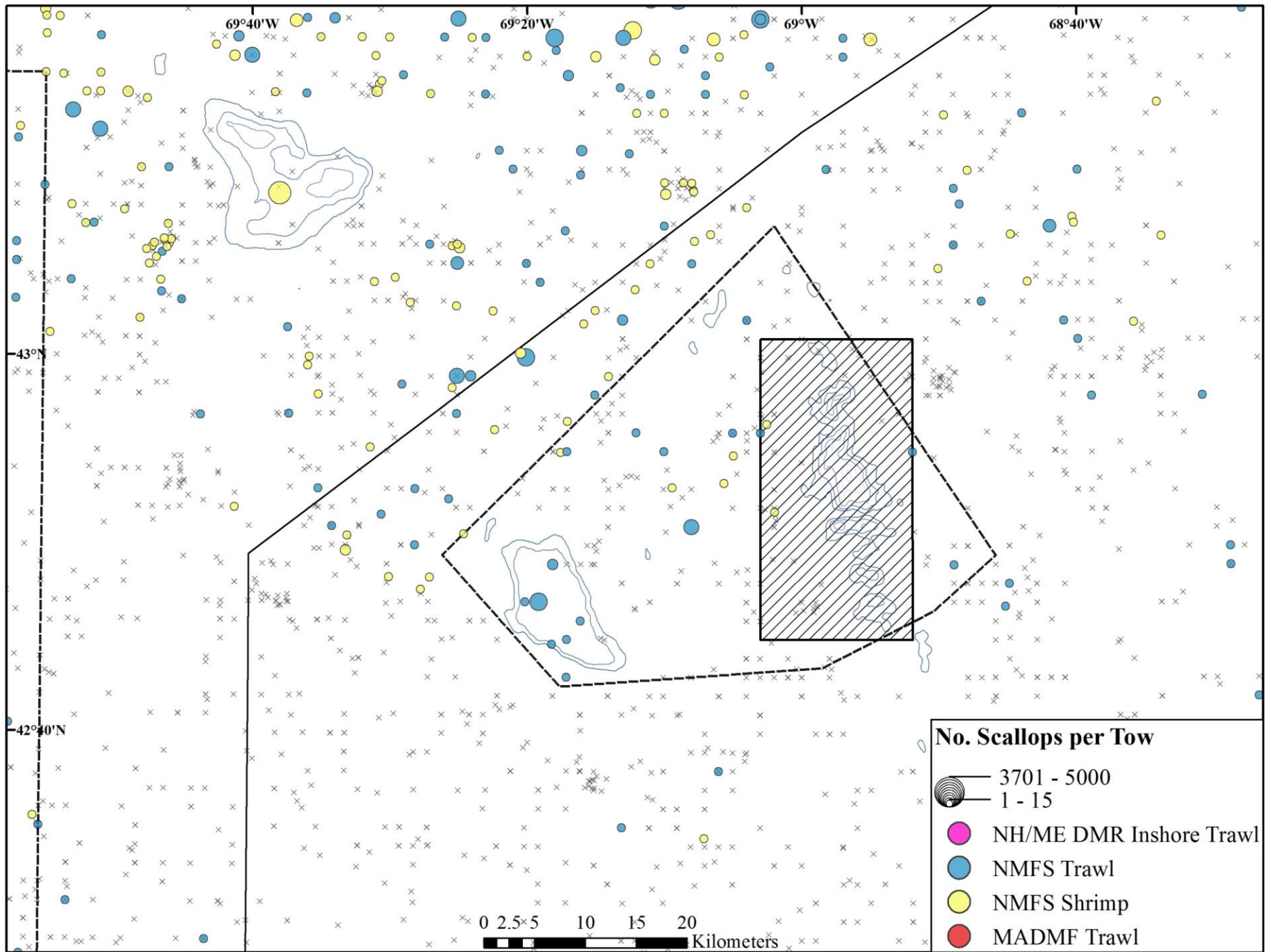
*NH/ME DMR Inshore Trawl data do not include tows with no scallops.

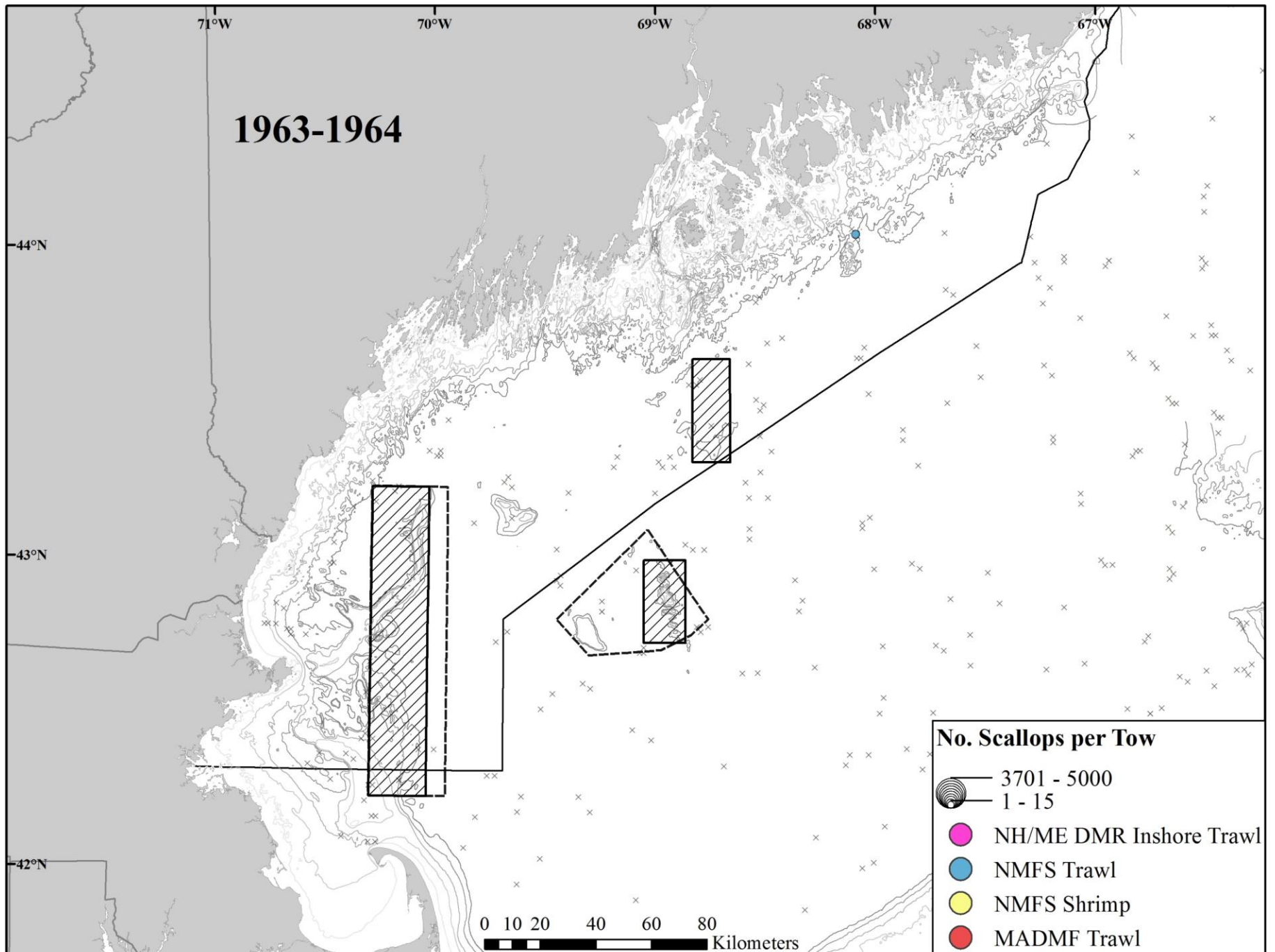




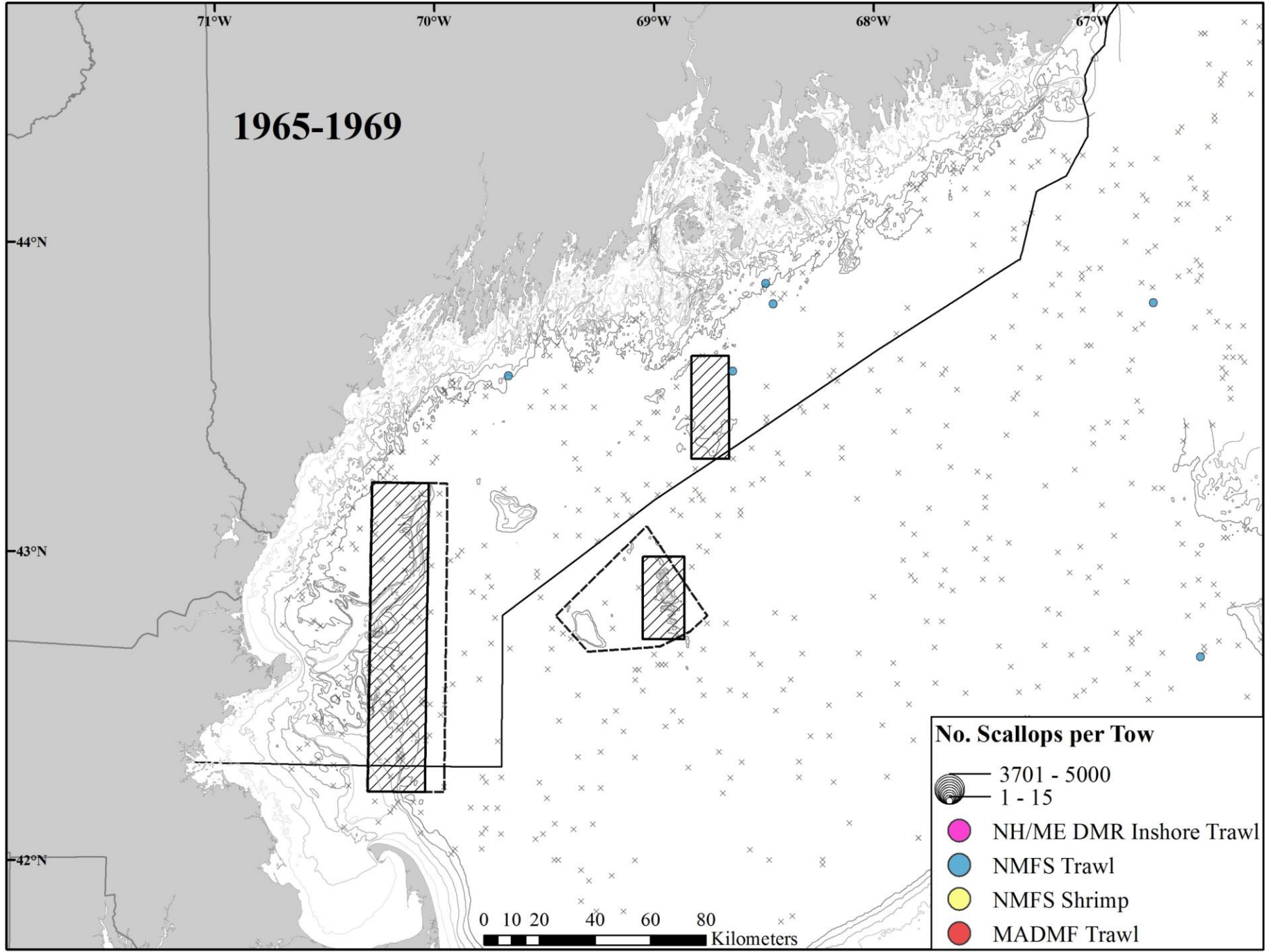








1965-1969

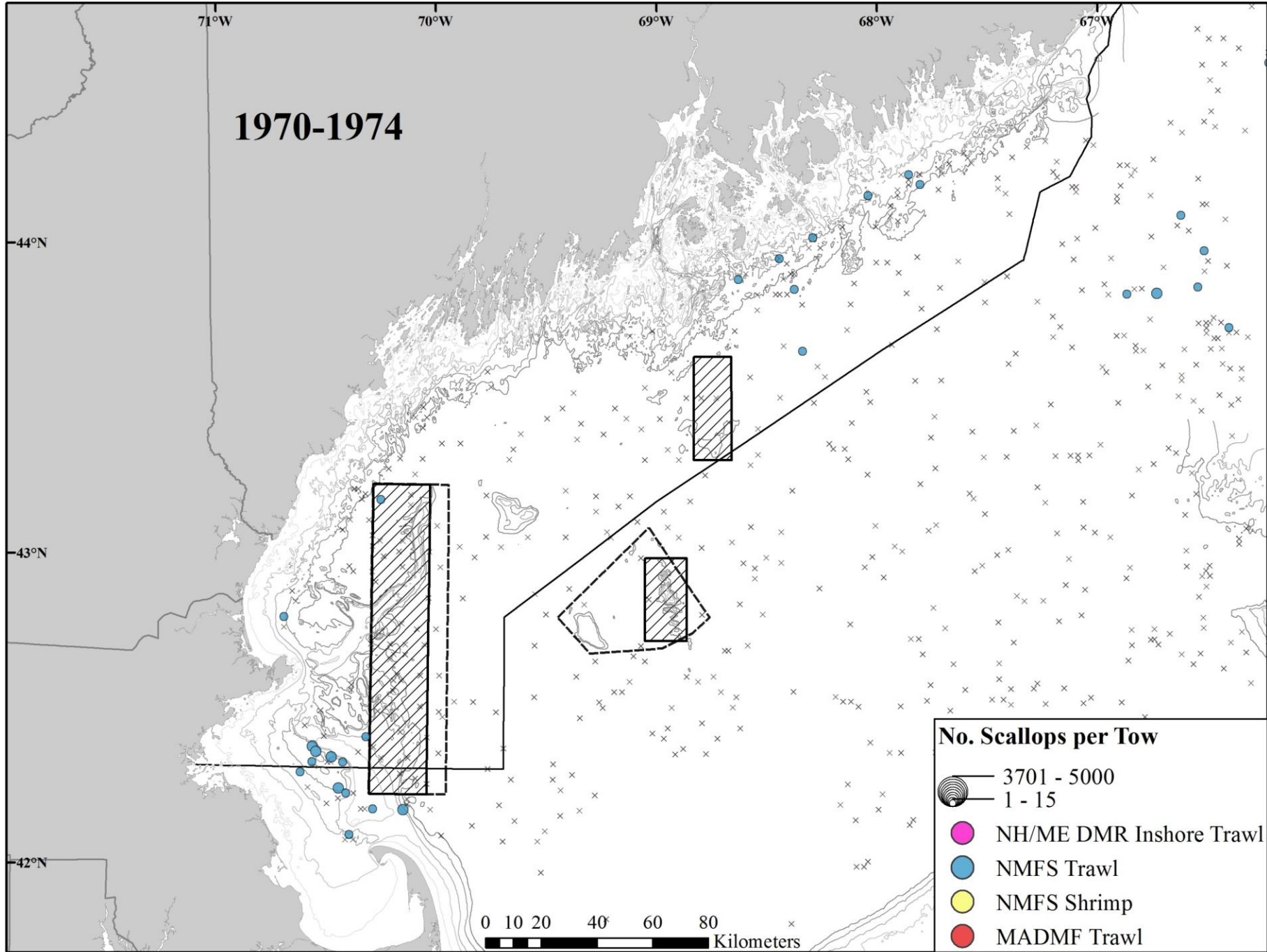


No. Scallops per Tow

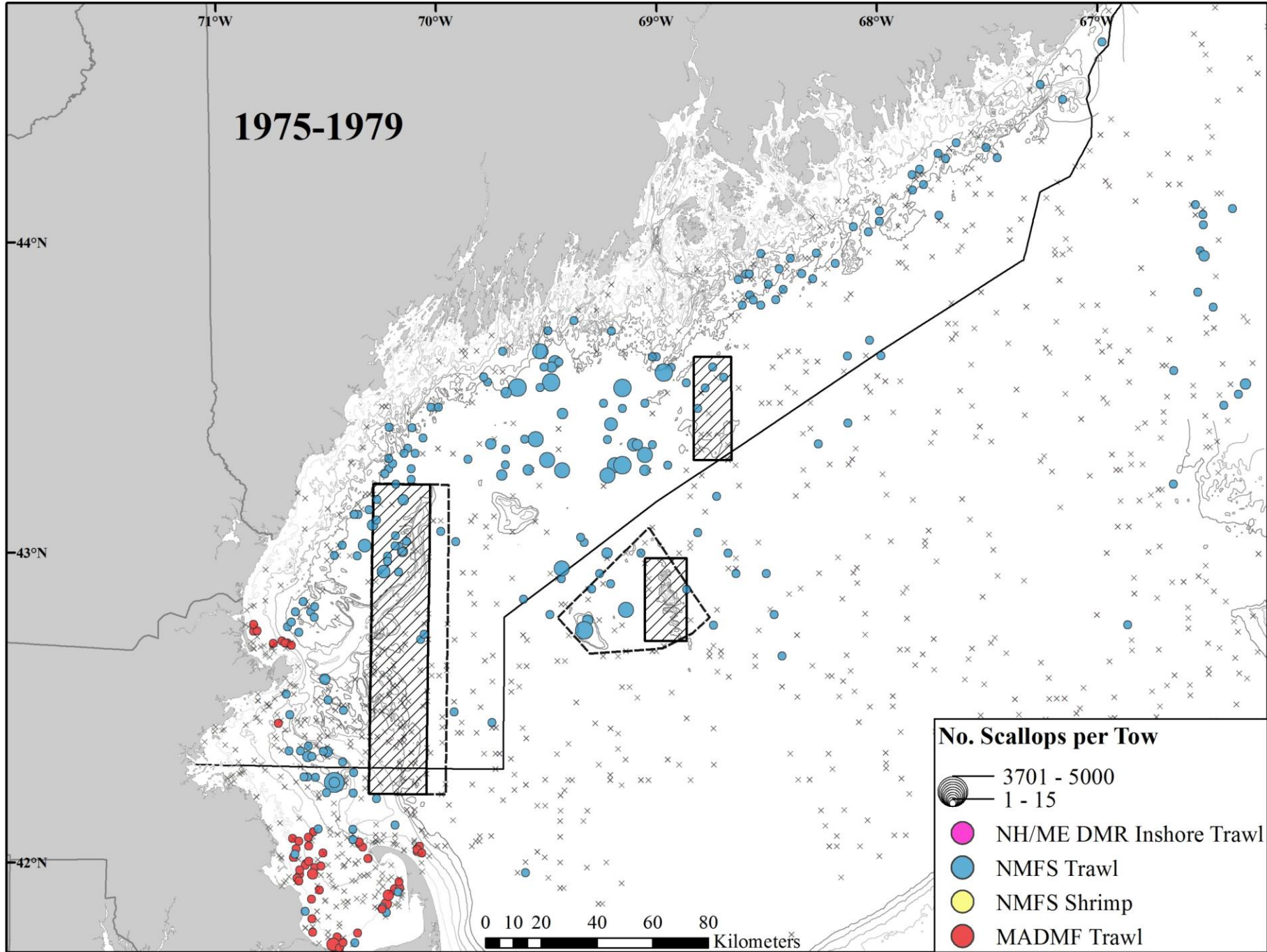
3701 - 5000
1 - 15

- NH/ME DMR Inshore Trawl
- NMFS Trawl
- NMFS Shrimp
- MADMF Trawl

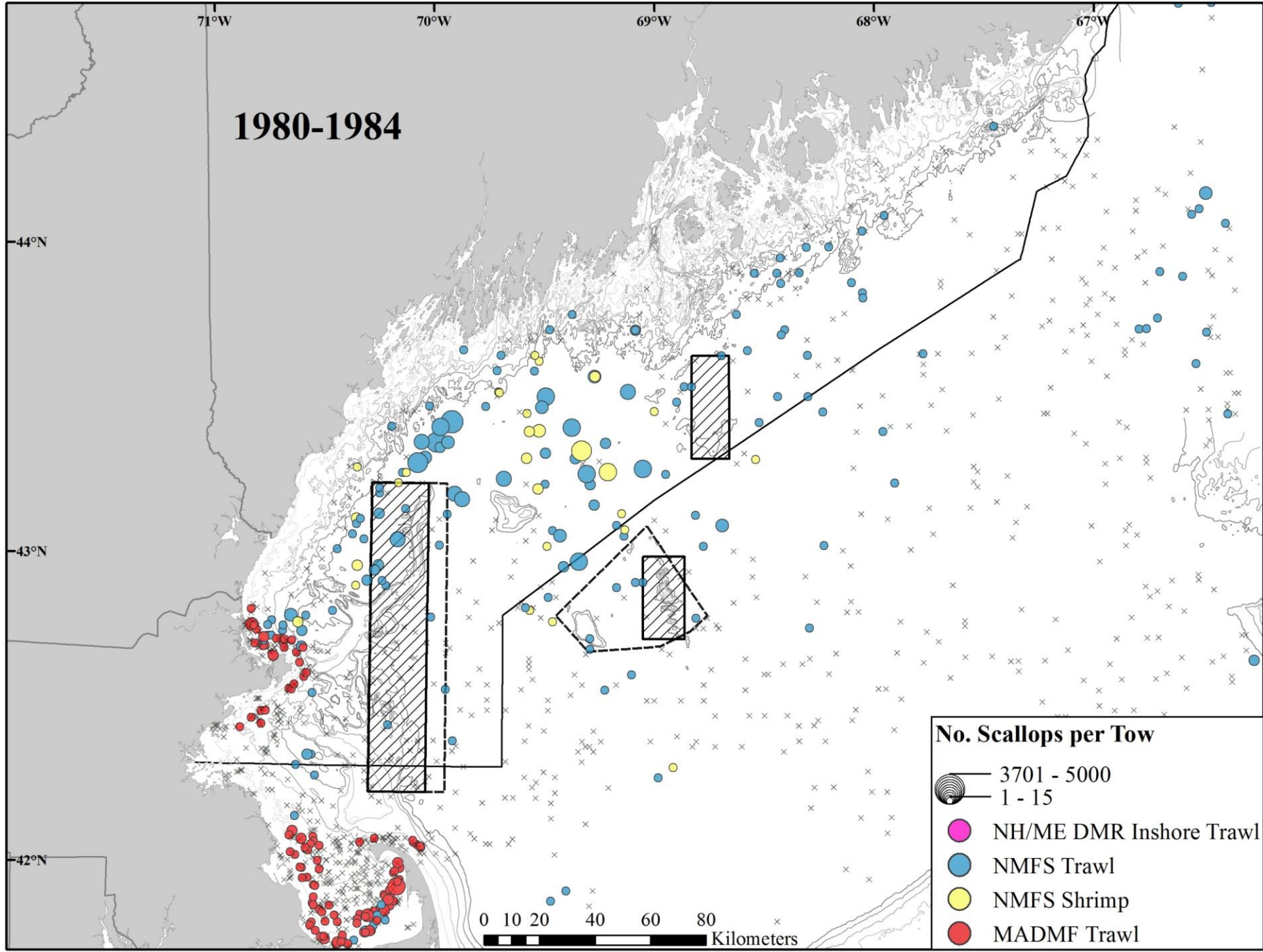
1970-1974



1975-1979



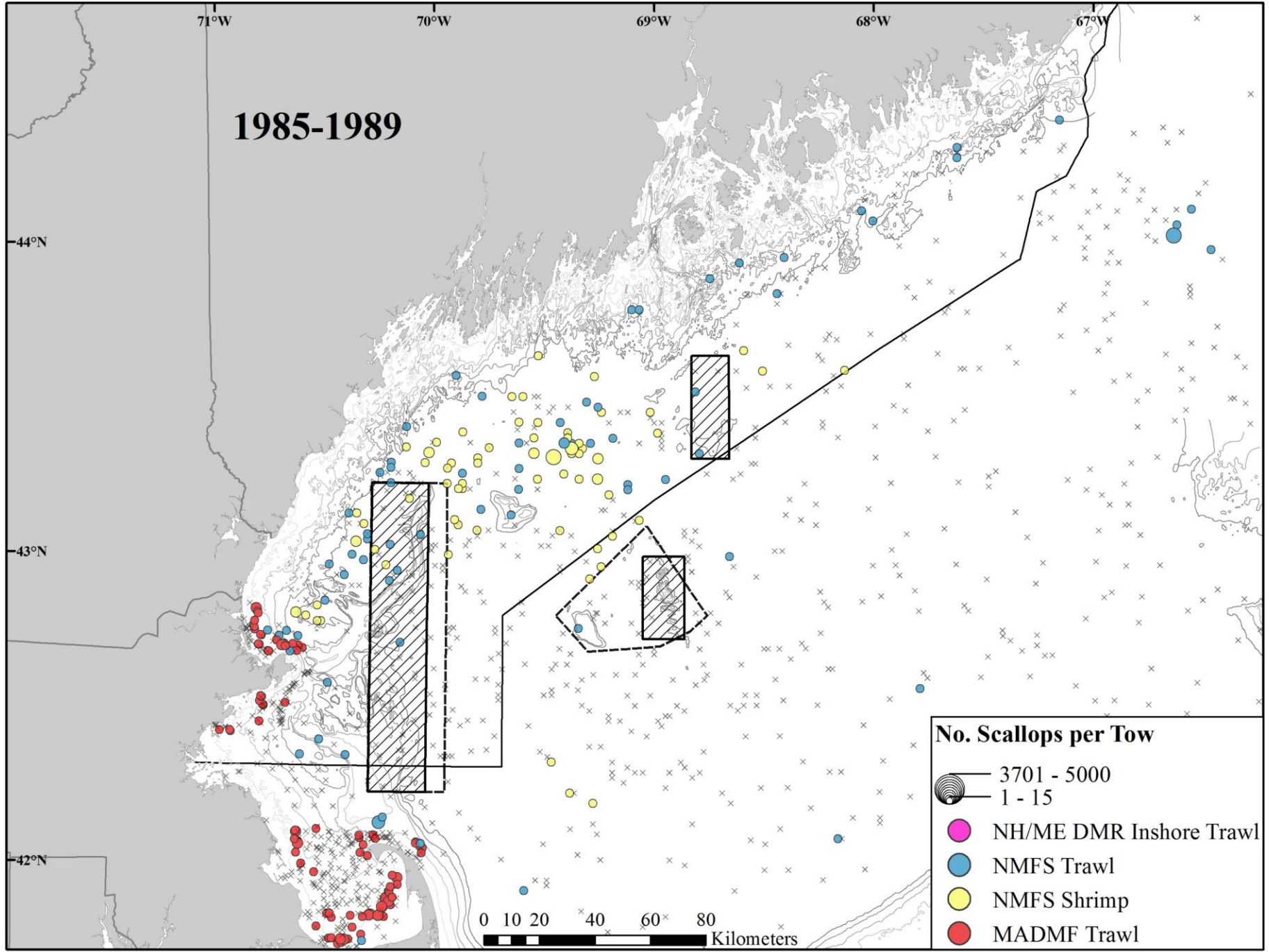
1980-1984



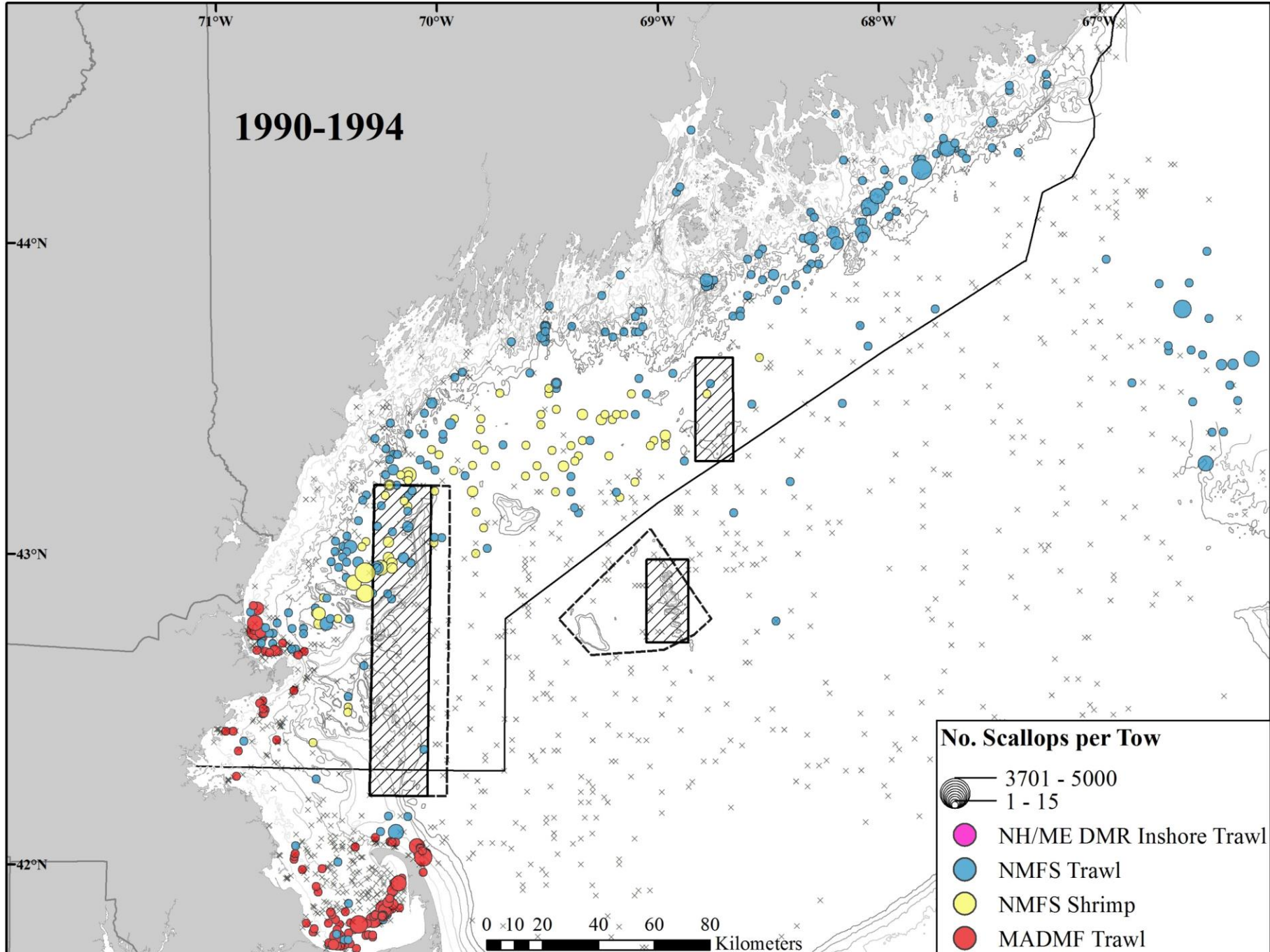
No. Scallops per Tow

- 3701 - 5000
- 1 - 15
- NH/ME DMR Inshore Trawl
- NMFS Trawl
- NMFS Shrimp
- MADMF Trawl

1985-1989



1990-1994



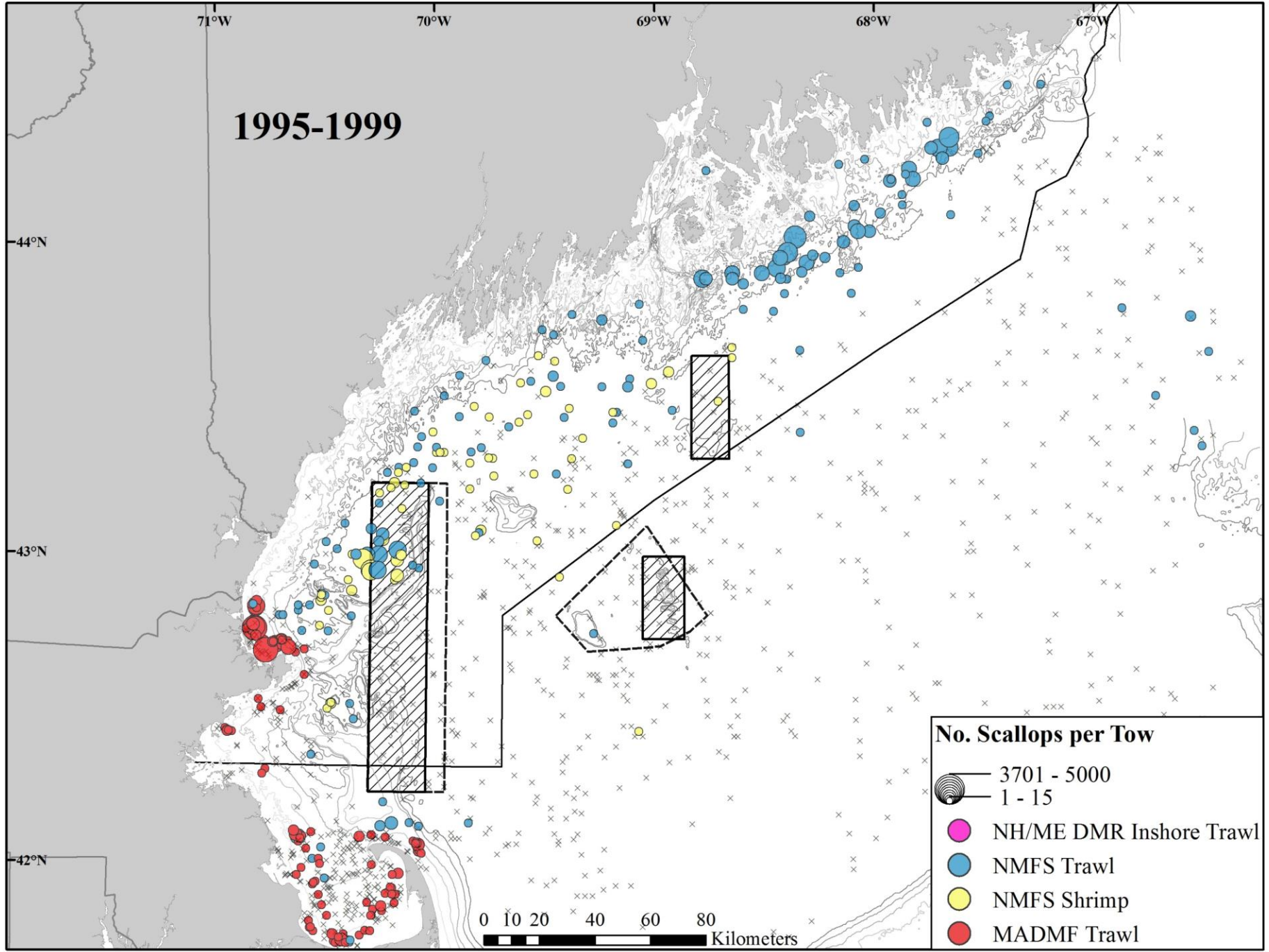
No. Scallops per Tow

3701 - 5000
1 - 15

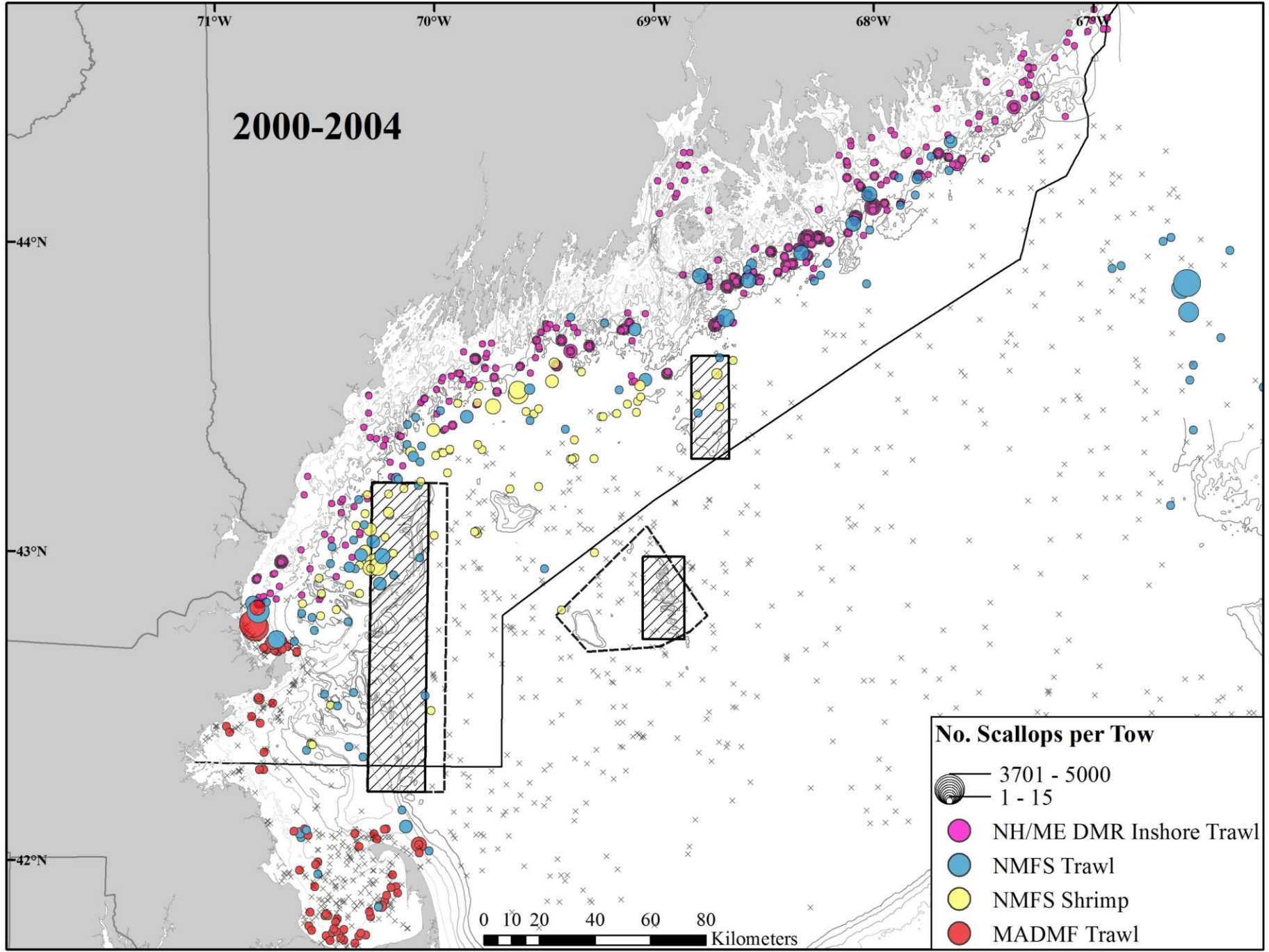
- NH/ME DMR Inshore Trawl
- NMFS Trawl
- NMFS Shrimp
- MADMF Trawl

0 10 20 40 60 80
Kilometers

1995-1999



2000-2004



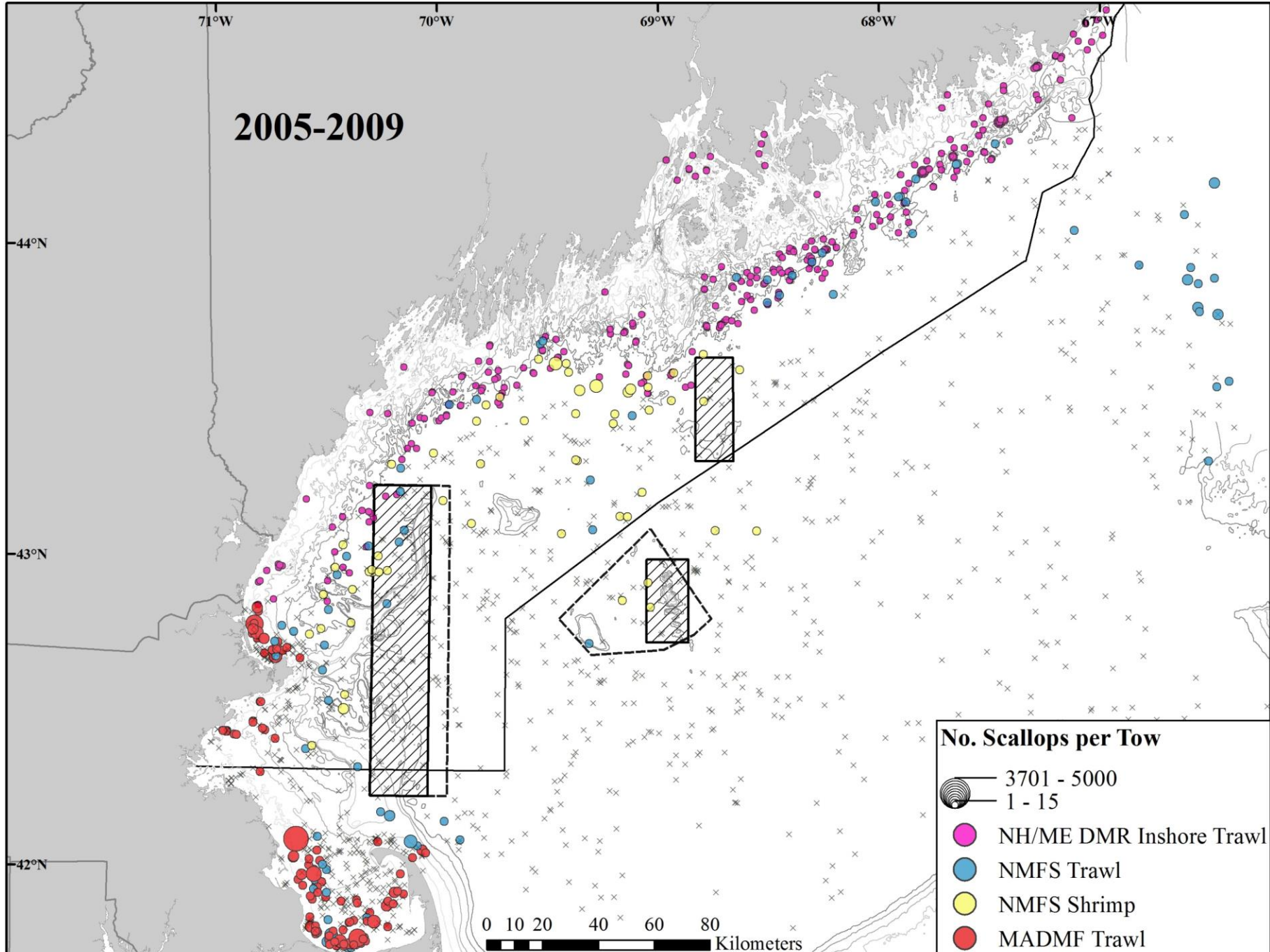
No. Scallops per Tow

3701 - 5000
1 - 15

- NH/ME DMR Inshore Trawl
- NMFS Trawl
- NMFS Shrimp
- MADMF Trawl

0 10 20 40 60 80 Kilometers

2005-2009



2010-2014

