

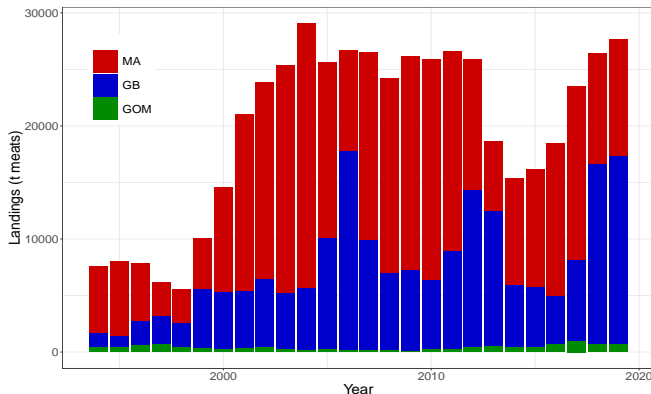
# Sea Scallop Assessment Update, 2020

---

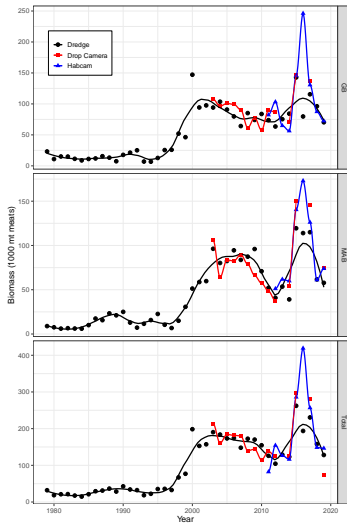
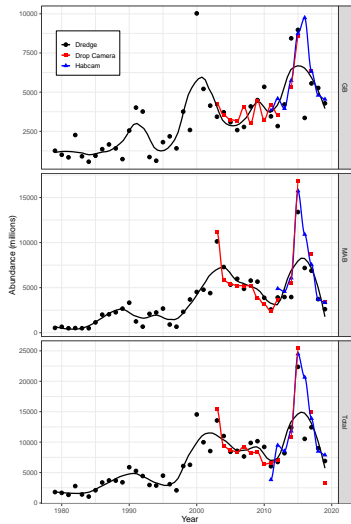
*Dvora Hart and Jui-Han Chang  
Northeast Fisheries Science Center  
Woods Hole MA 02543*

# Landings

Landings increased in 2018-2019, in large part due to harvesting of the 2012 year class in the Nantucket Lightship area and the 2013 year class in the Elephant Trunk and Hudson Canyon South rotational areas. Landings in 2019 were the second highest on record.

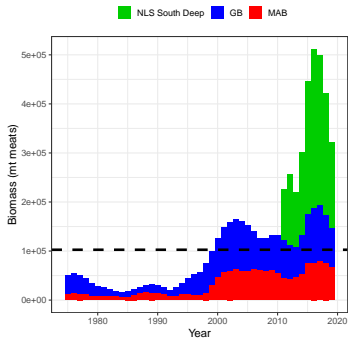
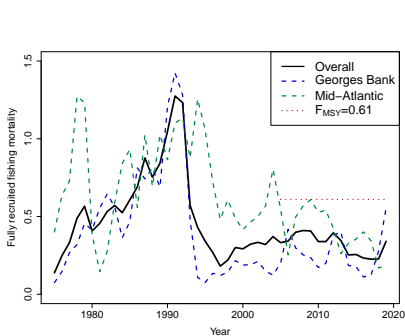


# Sea Scallop Surveys - Plots



## CASA model output

The CASA model estimates fishing mortality and biomass based on surveys, commercial data, and biological assumptions (e.g., growth and natural mortality).



## All Three Regions Combined

### 2019 biomass and fishing mortality estimates

Stock	Biomass (mt meats)	CV	F	CV
Georges Bank Closed	60,587	0.09	0.53	0.35
Georges Bank Open	19,692	0.06	0.61	0.14
Mid-Atlantic	66,795	0.04	0.19	0.34
Total	147,073	0.04	0.34	0.06

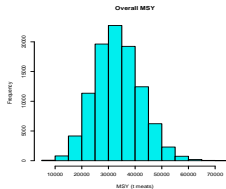
Scallops located in the deep water southeast portion of Nantucket Lightship Area are excluded.

# SYM Reference Point Model

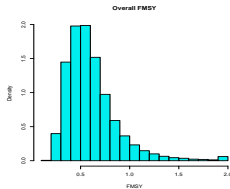
The SYM model estimates fishery reference points taking uncertainty into account.

Uncertainty in  $MSY$ ,  $F_{MSY}$ , and  $B_{MSY}$  for Georges Bank and Mid-Atlantic combined

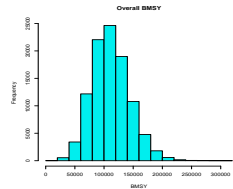
$MSY$



$F_{MSY}$



$B_{MSY}$



## Median reference point curves

2020

$$F_{\text{MSY}} = 0.61$$

2018

$$F_{\text{MSY}} = 0.64$$

$$B_{\text{MSY}} = 102,657 \text{ t}$$

$$B_{\text{MSY}} = 116,766 \text{ t}$$

