

Mitigating impacts to GB yellowtail

Sam Asci
Council staff

Scallop AP—September 18, 2019
Scallop CTE—September 19, 2019
Boston, MA



New England
Fishery Management
Council

Overview of work to date

- January '19—CTE tasking to analyzing 1) seasonal closures, 2) reduced hanging ratios
- May '19—CTE tasks the PDT with developing time/area closure options in two week increments from August 1 – December 31
- July '19—PDT discusses tasking, develops options for proactive measures to potentially include in FW32 (see [Doc.3d](#)):

Option 1—Extend current seasonal closure of CAII AA (August 15 to November 15) through December 31st. (page 2)

Option 2—Seasonal Closure of CAII AA until from April 1st – April 30th. (page 3)

Option 3—Establish a seasonal closure from February 1 to April 30 in the central and northeast portion of Closed Area II Access Area. (page 5)

Option 4—Establish a one-year, focused year-round closure in Closed Area II and surrounds to improve scallop yield-per-recruit and mitigate impacts on Georges Bank yellowtail flounder. (page 5)

Outlook for FY2020

GB yellowtail

- SSC/TMGC recommendation for GB yellowtail—similar to FY2019

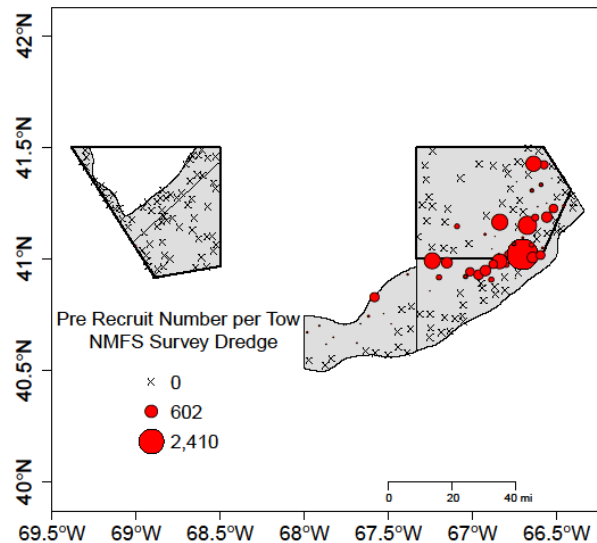
YT ABC	US Share	Scallop 'ABC'	Scallop 'sub-ACL'
FY2020	74%	16%	95% of ABC
162	119.9 mt	19.2 mt	18.2 mt

Outlook for FY2020

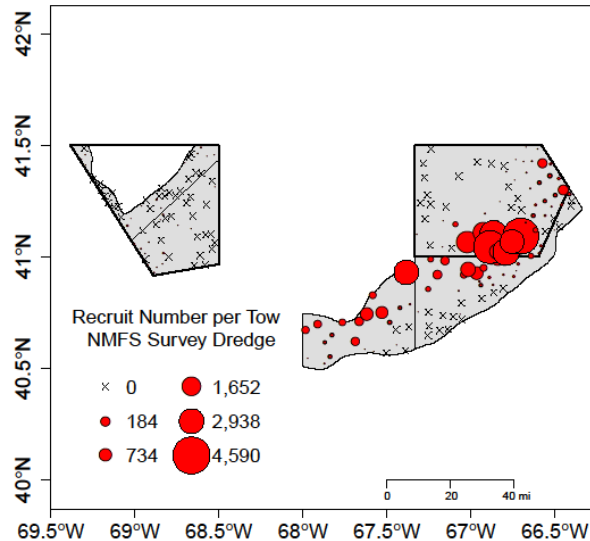
Scallops

- Bycatch estimate for 15k lb trip in 2019 was 10.5mt
- Viable fishing opportunity in CAII AA
- Large, incoming year class observed in CAII AA, CAII-ext, SF

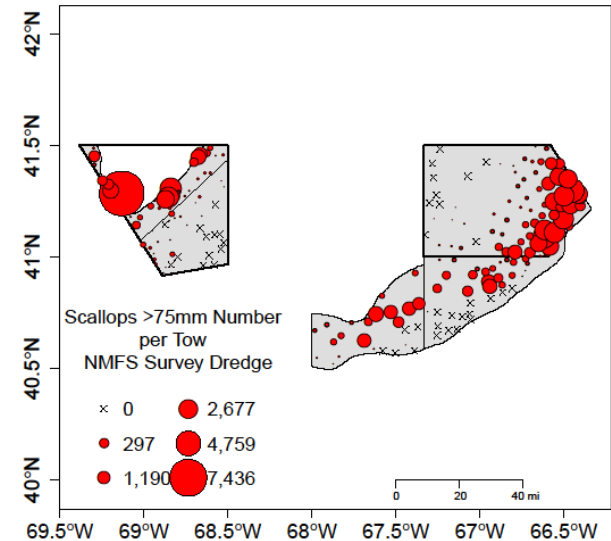
CA I II Survey Pre Recruits (< 35mm)



CA I II Survey Recruits (35 – 75mm)

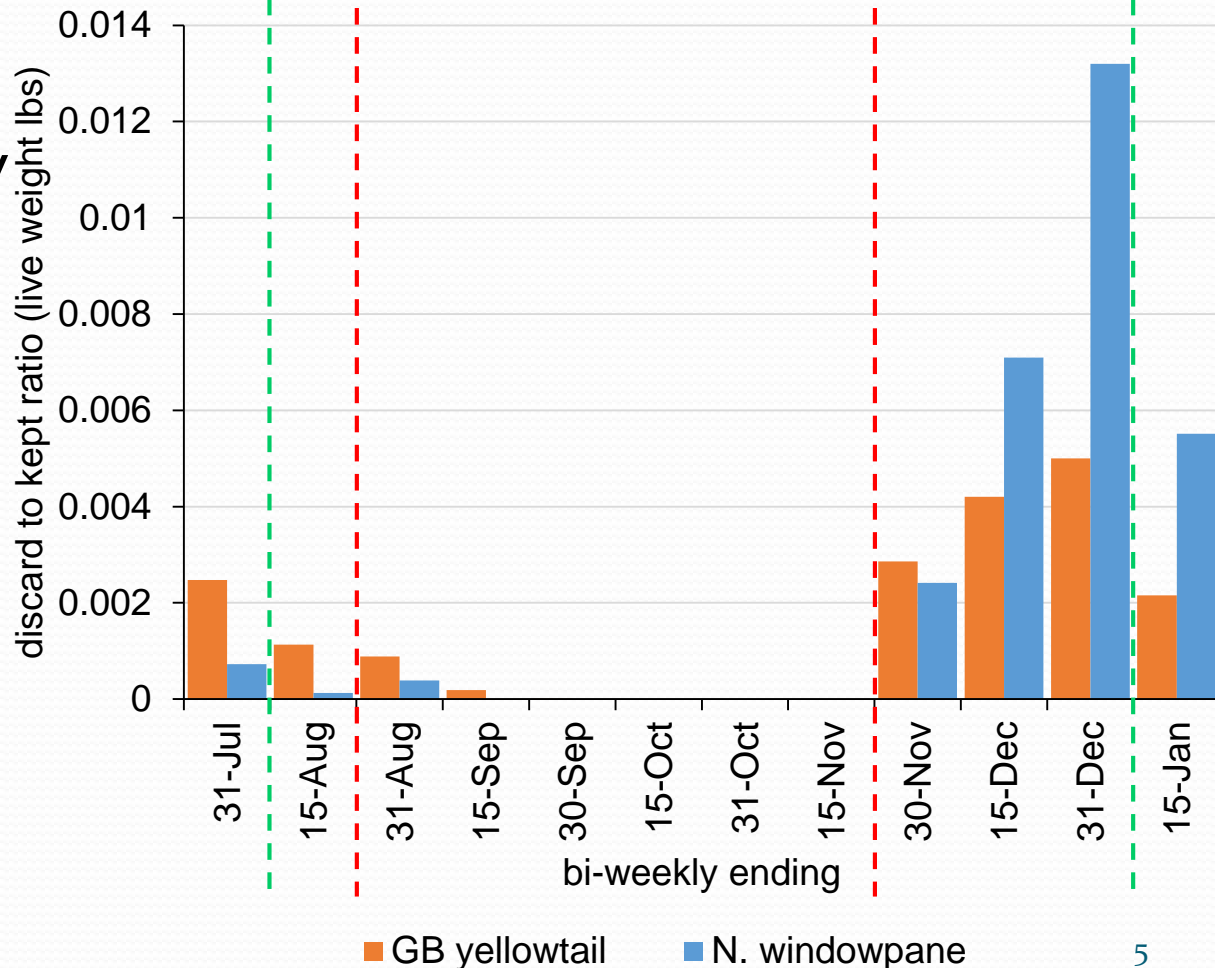


CA I II Survey Recruits (>75mm)



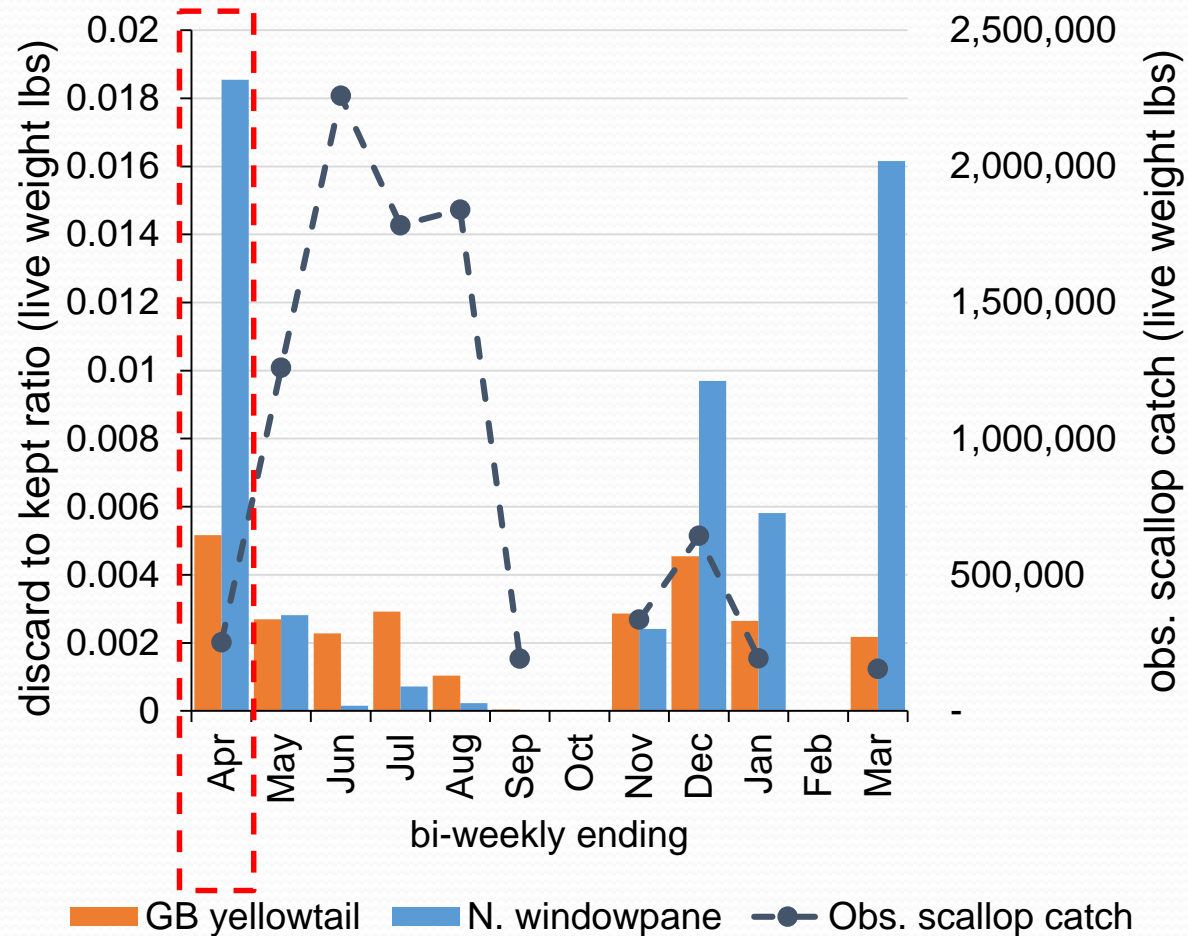
Option 1—extend seasonal closure

- Extend current seasonal closure in CAII AA (Aug 15-Nov 15) through Dec 31st.
- Supported by CTE tasking analyses—GB YT & NWP d/K higher during late fall/early winter months, higher bycatch savings anticipated.



Option 2—April closure in CAI

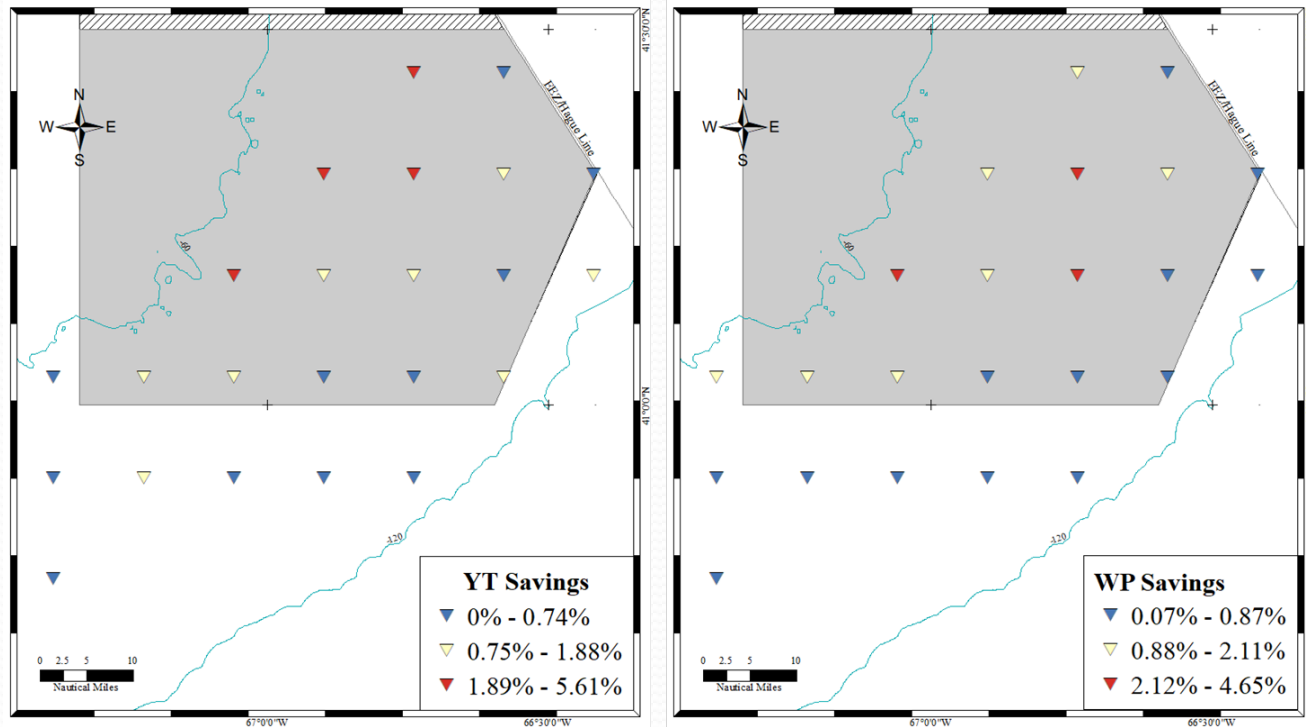
- April 1-April 30 closure of CAI for FY2020/2021
- GB YT d/K highest during April, but scallop yield not optimal
- See this as “delayed” opening of CAI if fishing occurs in FY2020, FY2021 (accounting for carryover fishing)



Option 3—sub-area seasonal closure in CAI

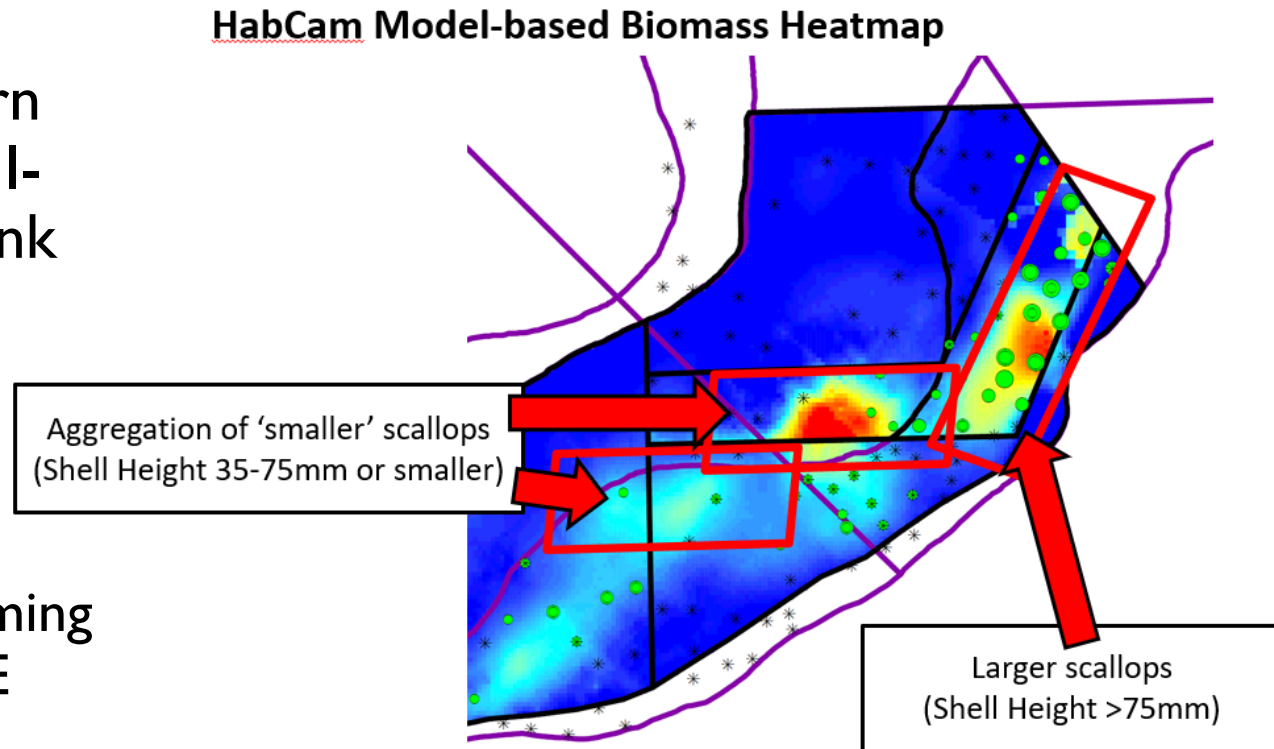
- Establish a focused closure in the central and northeast part of CAI AA from Feb 1-Apr 30.
- CFF seasonal bycatch survey shows increased GB YT catches during this time/space.
- Option 3 would keep eastern extent of CAI accessible (i.e. larger scallops)

Figure 3. Estimated extended link apron bycatch savings for stations sampled during the 2018 Seasonal Bycatch Survey (source: CFF).



Option 4—year-round sub-area closure in CAII and surrounds

- Establish a focused closure along southern edge of CAII AA, CAII-ext, and Southern Flank for FY2020
- Two fold benefit:
 - Reduction in GBYT catch expected
 - Protects large, incoming year class in CAII/SE Parts.
- Option 4 concept would keep eastern extent of CAII accessible (i.e. larger scallops)



For discussion

- Fishing CALL has resulted in high GB YT bycatch—true in the past, likely true in the future (see [Doc.9 Memo to GF PDT re: GB yellowtail](#))
- Based on outlook for GB YT and scallops in FY2020, consider the paired benefit of reducing yellowtail bycatch AND conserving small scallops (improve YPR)
- If the reactive AM is triggered for GB YT/NWP, gear modification required while fishing eastern GB
- Clarify Committee tasking: “if an action necessary”
- Seeking input on options for FW32

Other slides

Jan 18, 2019 Committee tasking

Motion #4: Hughes/Patterson

The Committee tasks the PDT with analyzing the options for reducing bycatch of Georges Bank Yellowtail Flounder. This should include evaluating:

- Seasonal closures
- Analyze hanging ratios down to 1.5:1

Rationale: Given the poor status of Georges Bank yellowtail founder, there is a need to continue to find ways to reduce bycatch to mitigate impacts on the stock.

The motion carried on a show of hands: (11/0/0)

Scallop Committee Tasking (5/23/19)

15. By consensus:

Committee tasks the PDT with developing time/area closure options in two week increments from August 1 – December 31 to mitigate the impact on Georges Bank yellowtail flounder and Northern windowpane flounder in an upcoming management action if an action is necessary

Biweekly d/K

Relative to obs. scallop catch:

- downward trend when d/K lowest (Aug 1-15)
- relatively consistent in fall when d/K highest (Nov 16-Dec 31)

