

Scallop Framework 30

**Jonathon Peros, NEFMC Staff,
Scallop PDT Chair**

**Scallop AP – Nov. 27, 2018
Scallop CTE – Nov. 28, 2018
Providence, RI**



**New England
Fishery Management Council**

Today's Meeting:

- **Goal: Review FW30 measures and analyses, and identify preferred alternatives.**

Outlook:

- Scallop Report at Council meeting will be Wed., Dec. 5 at 2 pm
- The SSC report to Council will be at 11:45 am Wednesday, Dec. 5
- Expect the Council to take final action on FW30 in December.
- “Decision Draft” submission of FW30 in December to being rule making process.
 - Delay in Final Action will delay the Framework.

Updates – Groundfish FW 58

- **Alternative 4.3.1:** Modify part of the GB YT AM trigger for scallop fishery (remove 150% trigger for 2 years)
- Final year end groundfish catch report for FY2017 has been released. **No Reactive Scallop AMs triggered for FY2019.**
- **Update to some sub-ACLs for FY 2019. See below.**

Stock	FY 2018 Sub-ACL	FY 2019 Sub-ACL	% Change
GB Yellowtail Flounder	33 mt	17 mt	-94%
SNE/MA Yellowtail Flounder	5 mt	15 mt	+200%
GOM/GB Windowpane	18 mt	18 mt	No Change
SNE/MA Windowpane Flounder	158 mt	158 mt	No Change

Agenda – FW 30, Specifications

- Framework Overview and Preliminary Analyses
- 4.1 – OFL and ABC for 2019/2020
- 4.2 – Northern Gulf of Maine Management Measures
- 4.3 – Specifications for FY 2019 and FY 2020 (default)
- 4.4 – LAGC IFQ fishing in Access Areas
- 4.5 – Measures to Reduce Fishery Impacts
- 4.6 – Standard Default Measures

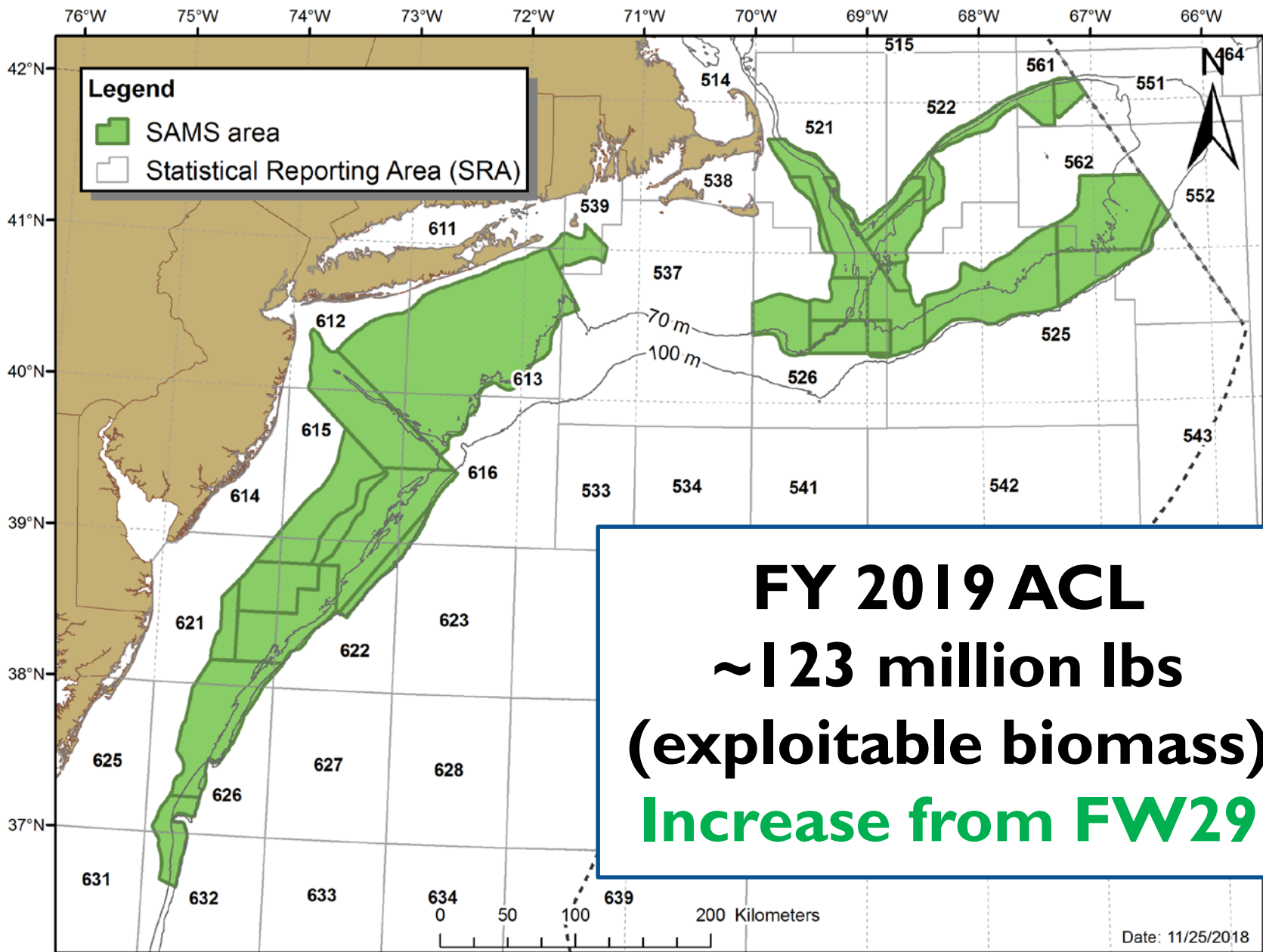


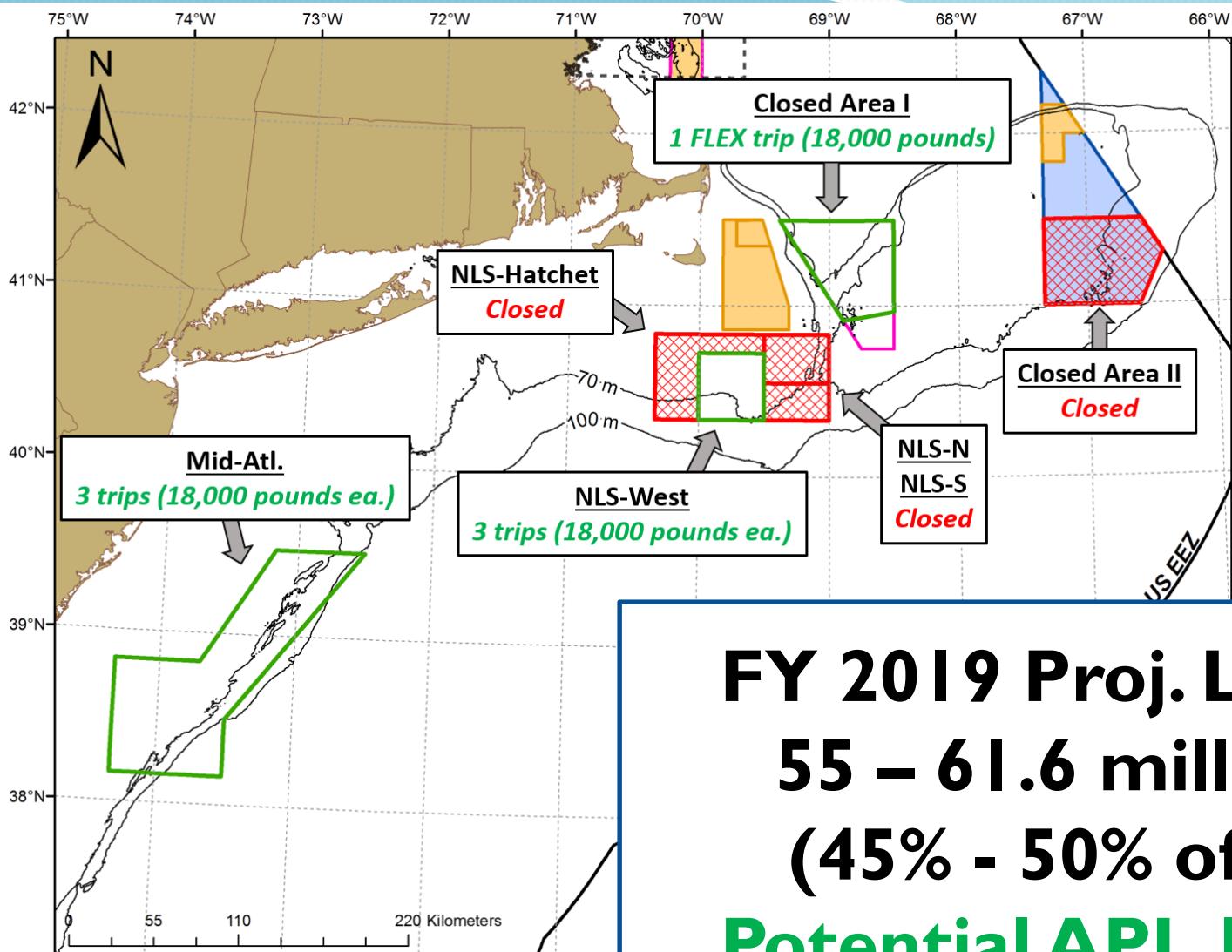
Framework 30: Purpose and Need

Doc.3, Section 3.2, page 6

Need	Purpose	Section(s)
To achieve the objectives of the Atlantic Sea Scallop FMP to prevent overfishing and improve yield-per recruit from the fishery.	To set specifications including: OFL, ABC, scallop fishery ACLs and ACTs including associated set-asides, day-at-sea (DAS) allocations, general category fishery allocations, and area rotation schedule and allocations for the 2019 fishing year, as well as default measures for FY2020 that are expected to be replaced by a subsequent action.	4.1, 4.2, 4.3, 4.4, 4.5
To streamline the specifications setting process and facilitate predictable outcomes for stakeholders.	To standardize the approach to setting default measures for open-area DAS and LAGC IFQ allocations.	4.6

Overview of FW30 Specifications and Preliminary Analyses





FY 2019 Proj. Landings
55 – 61.6 million lbs
(45% - 50% of ACL)
Potential APL Increase
from FW29

Specification Alternatives

- ***6 Total Options, including Status Quo and No Action***
- Annual Projected Landings (fishery allocations) with most scenarios under consideration comparable to FW29 allocation (~60 million lbs).
- Alternative 3: two possible F rates for open area fishing.
- Alternatives 3 & 4: CAI “FLEX” Trip

Specification Alternatives

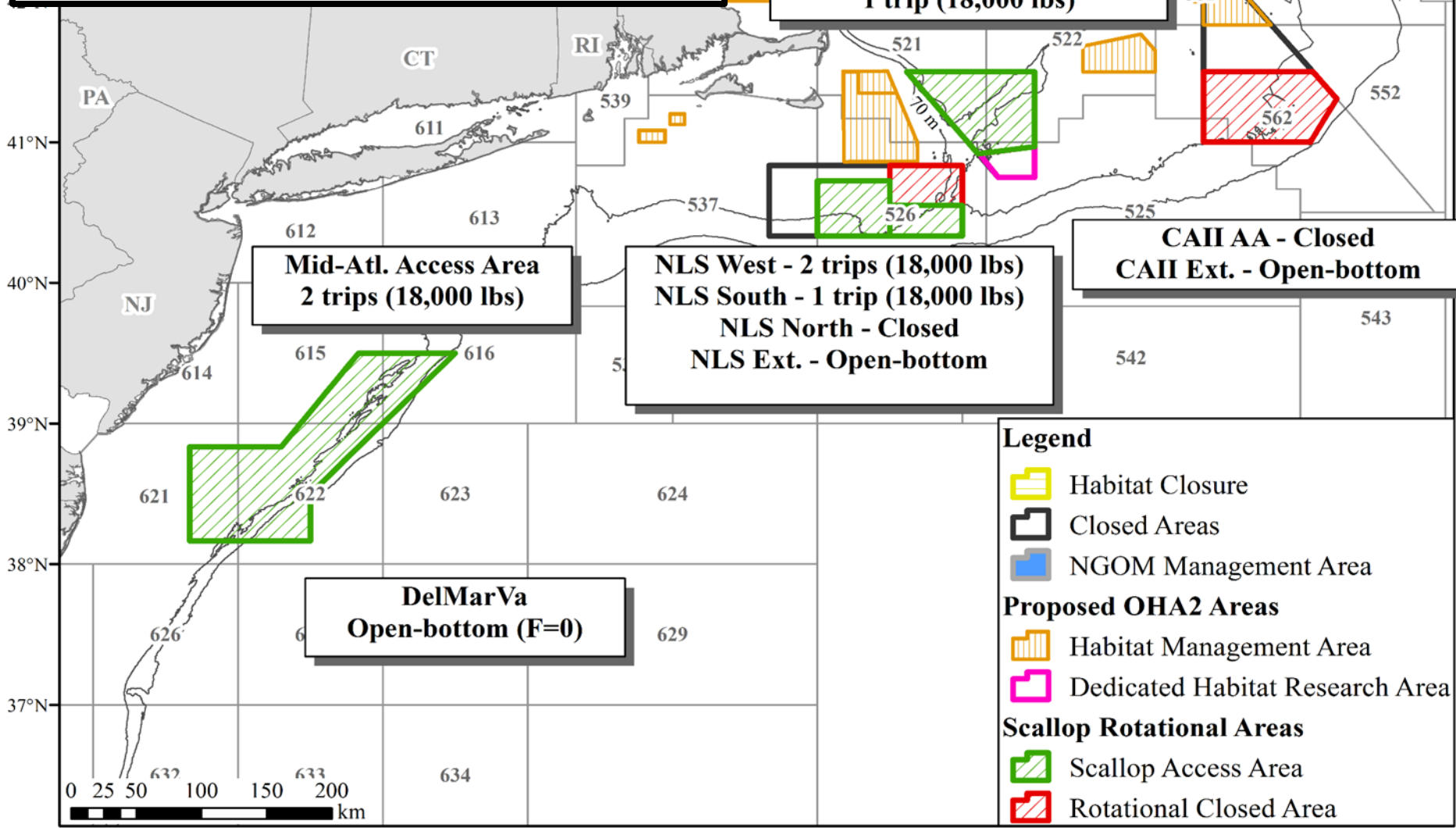
- See Decision Document 3a, page 6

4.3 – Fishing Year 2019 & 2020 Specifications		
Section	Alternative	Description
4.3.1	Alt. 1	No Action: 1 trip to MAAA, 18 DAS
4.3.2	Alt. 2	7 Access area trips (15,000 lb trip limit): <ul style="list-style-type: none"> • 1 Closed Area I • 3 Nantucket Lightship-West • 3 Mid-Atlantic Access Area FT LA DAS: 26 (F=0.25) <i>2020 Default:</i> 1 trip to MAAA, 1 trip to NLS-West (15k lbs), 19.5 FT LA DAS
4.3.3.1	Alt. 3 – Sub-Option 1	7 Access area trips (18,000 lb trip limit): <ul style="list-style-type: none"> • 1 Closed Area I FLEX • 3 Nantucket Lightship-West • 3 Mid-Atlantic Access Area FT LA DAS: 26 (F=0.25) <i>2020 Default:</i> 1 trip to MAAA, 1 trip to NLS-West (18k lbs), 19.5 FT LA DAS
4.3.3.2	Alt. 3 – Sub-Option 2	7 Access area trips (18,000 lb trip limit): <ul style="list-style-type: none"> • 1 Closed Area I FLEX • 3 Nantucket Lightship-West • 3 Mid-Atlantic Access Area FT LA DAS: 24 (F=0.23) <i>2020 Default:</i> 1 trip to MAAA, 1 trip to NLS-West (18k lbs), 18 FT LA DAS
4.3.4	Alt. 4	7 Access area trips (15,000 lb and 18,000 lb trip limits): <ul style="list-style-type: none"> • 1 Closed Area I-FLEX (15k) • 3 Nantucket Lightship-West (18k) • 3 Mid-Atlantic Access Area (18k) FT LA DAS: 24 (F=0.23) <i>2020 Default:</i> 1 trip to MAAA, 1 trip to NLS-West (18k lbs), 18 FT LA DAS

4.3.5 - Status Quo

FY 2018 Spatial Management

Used in this action for comparison to other alternatives under consideration



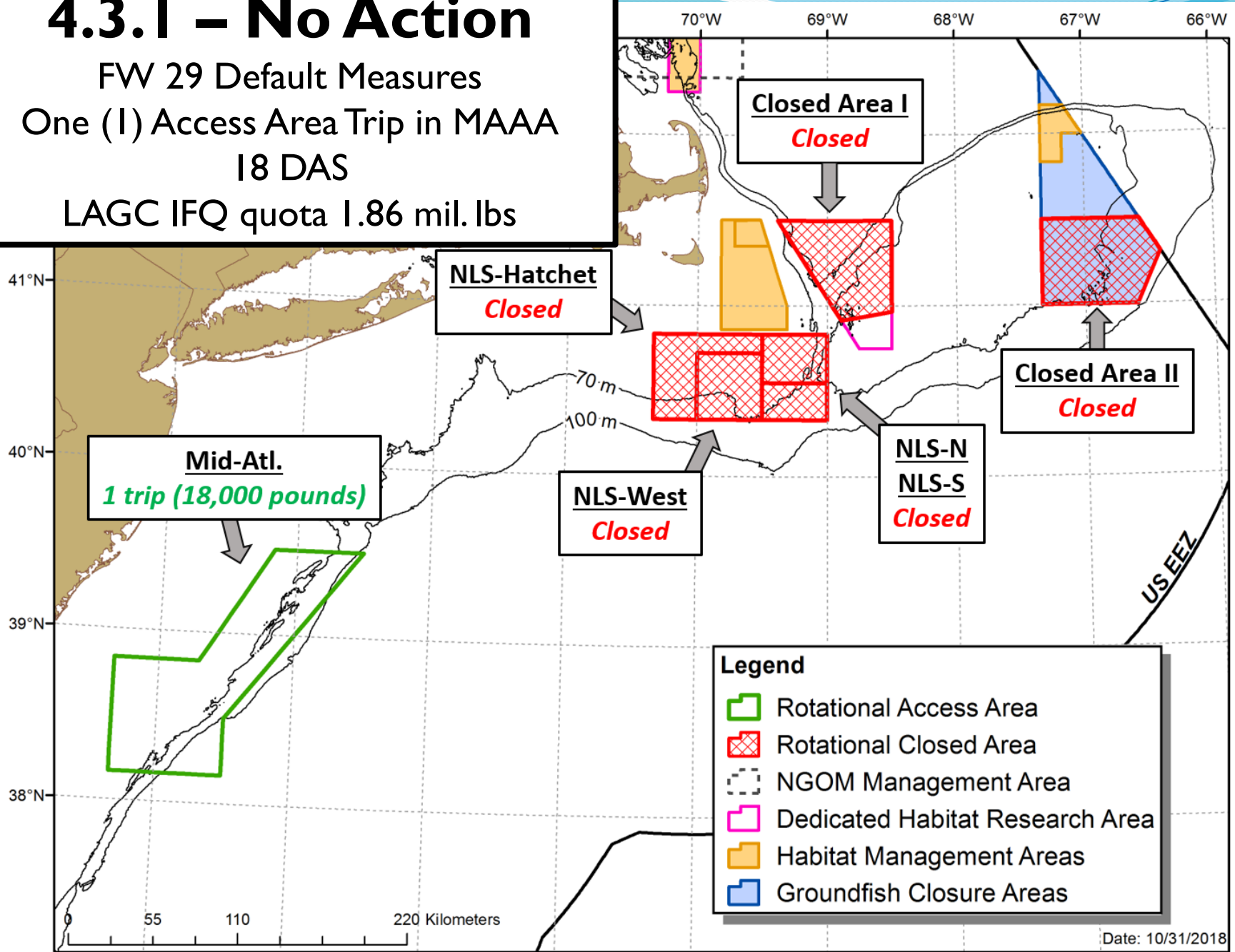
4.3.1 – No Action

FW 29 Default Measures

One (1) Access Area Trip in MAAA

18 DAS

LAGC IFQ quota 1.86 mil. lbs



Legend

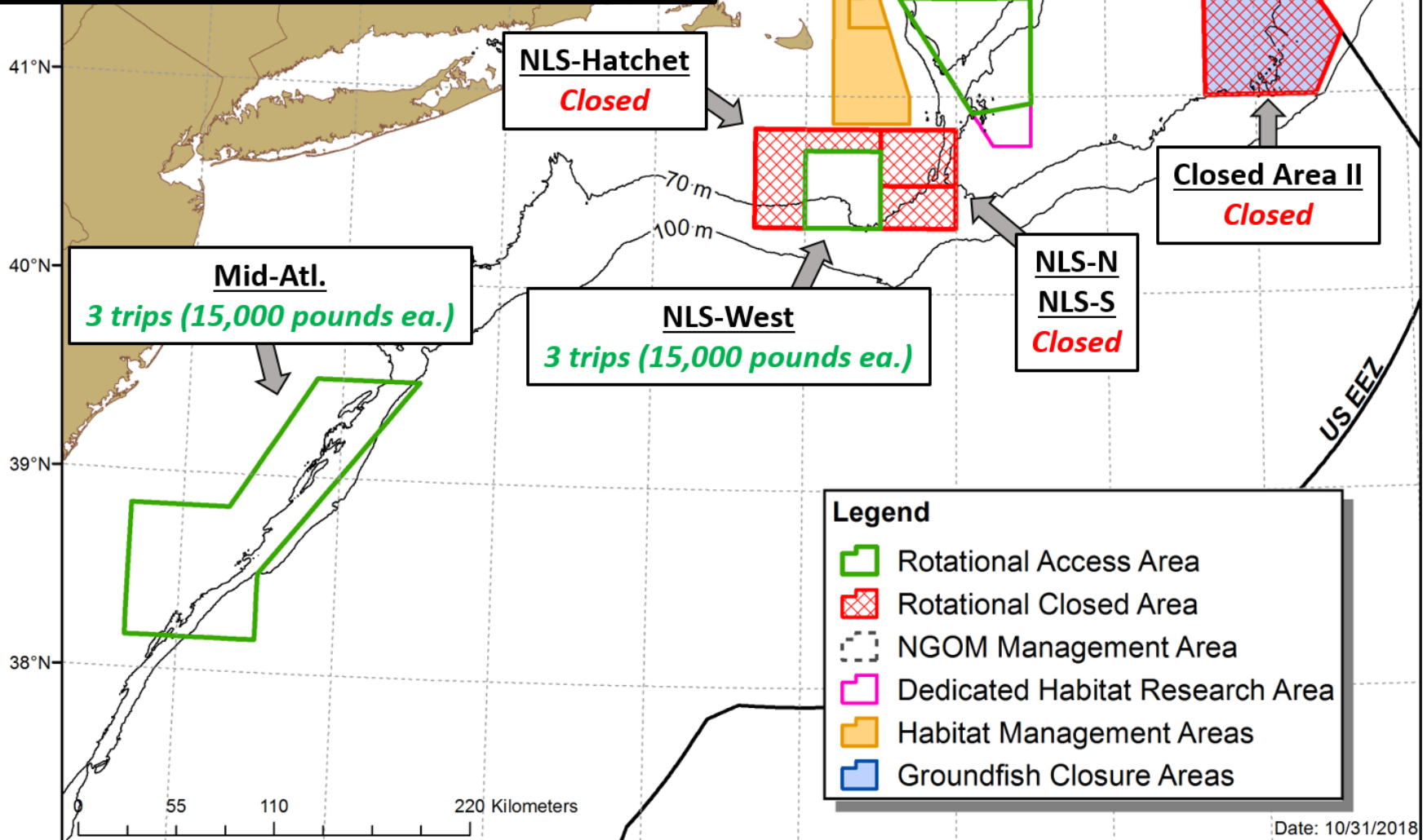
- Rotational Access Area
- Rotational Closed Area
- NGOM Management Area
- Dedicated Habitat Research Area
- Habitat Management Areas
- Groundfish Closure Areas

4.3.2 – 7 trips at 15k

7 Access Area Trips

(3 MAAA, 3 NLS-W, 1 CAI)

26 DAS at F=0.25, APL~55.0 mil. lbs



“FLEX” Alternatives

- “FLEX” concept similar to what the Council preferred for the ET-FLEX/MAAA in FW28.
- Allow vessels to fish pounds from their “CAI” FLEX trip in the NLS-West or the MAAA.
 - Vessels could opt not to go to CAI at all; or
 - Land part of the CAI trip, then redirect the remaining FLEX allocation to NLS-W or MAAA.
- *Rationale:*
 - There are 9 year old animals in CAI. This is the oldest dominant cohort in rotational areas.
 - If projections are overly optimistic, it could be difficult for the fishery to achieve the allocation in CAI.
 - Exploitable biomass in NLS-W and MAAA is projected to be sufficient to support any redirection from CAI.

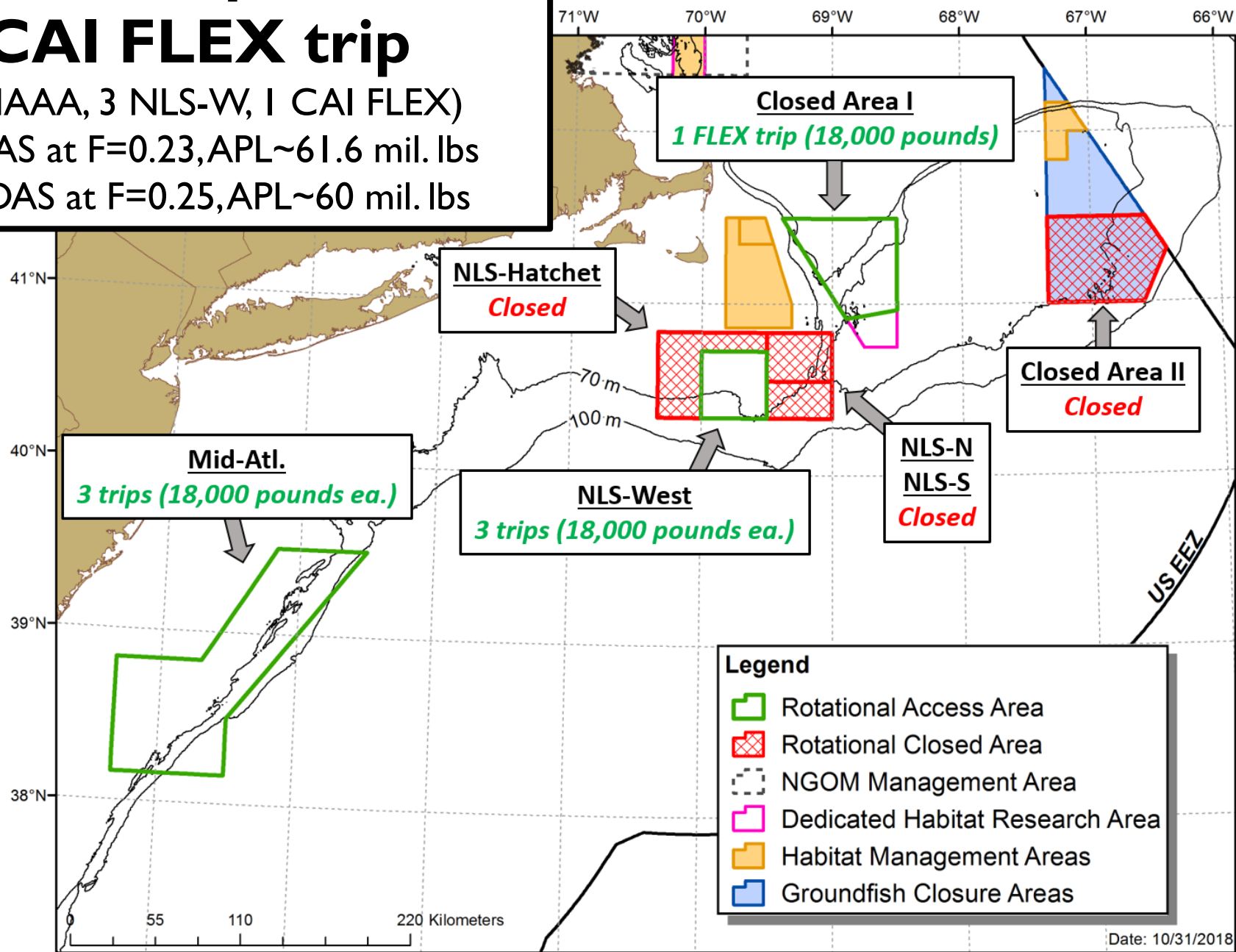
4.3.3 – 7 trips at 18k;

CAI FLEX trip

(3 MAAA, 3 NLS-W, 1 CAI FLEX)

26 DAS at F=0.23, APL~61.6 mil. lbs

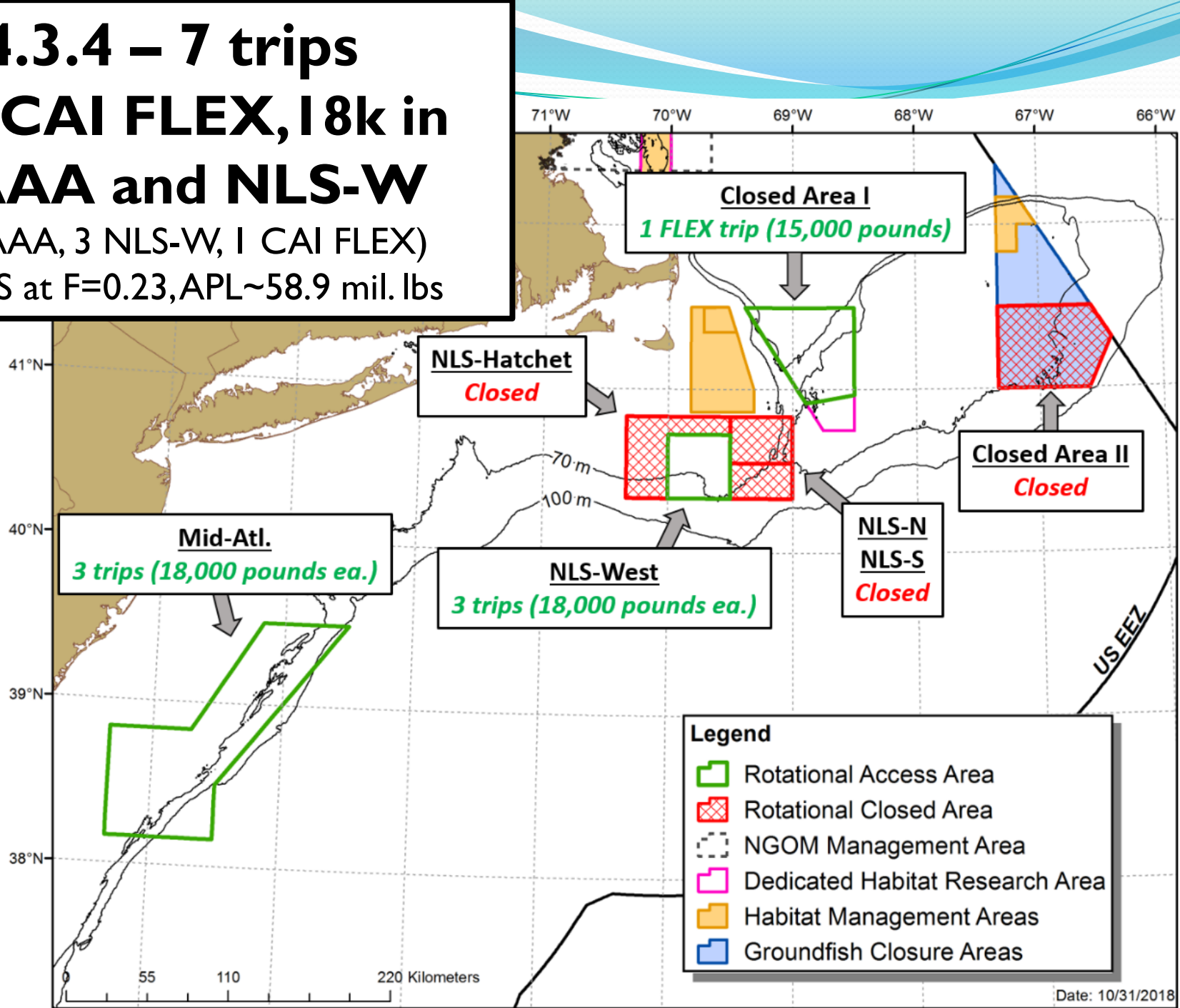
24 DAS at F=0.25, APL~60 mil. lbs



4.3.4 – 7 trips

15k CAI FLEX, 18k in MAAA and NLS-W

(3 MAAA, 3 NLS-W, 1 CAI FLEX)
24 DAS at F=0.23, APL~58.9 mil. lbs



Default Measures for FY 2020

- ***Included in each specifications alternative (4.3)***
- For LA Vessels – 75% of DAS allocation, and 1 access area trip in the MAAA, 1 trip in NLS-W.
- For LAGC vessels – 75% of 2019 allocations, LAGC access area trips set at 5.5% of the total access area allocation for default measures. These trips would be available in the MAAA and NLS-W.
- These options have been incorporated into the draft alternatives, and can be modified.
- 75% of DAS and IFQ quota are standard default options.

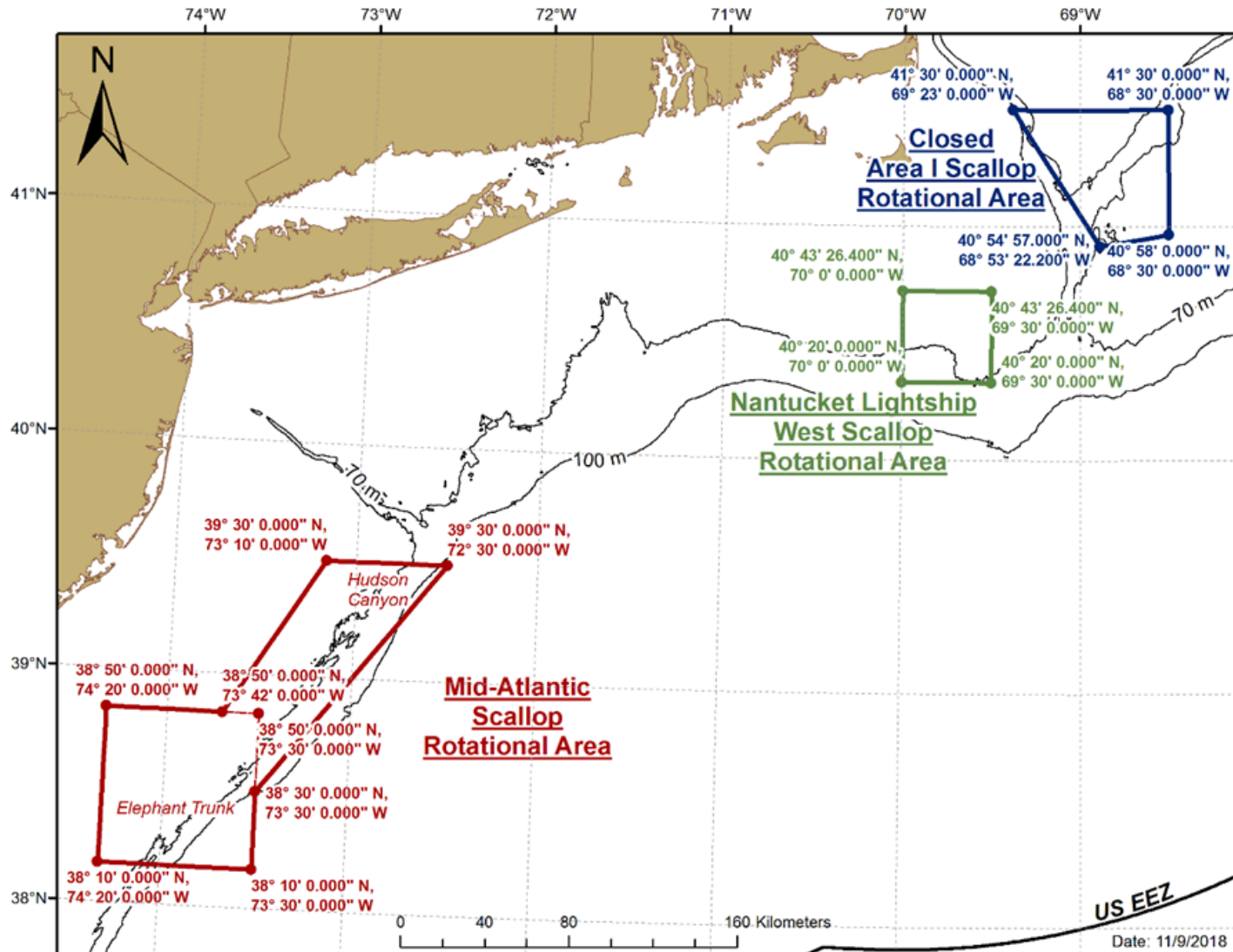
Part Time Allocations

- 40% of Full Time Allocations; DAS fixed, some flexibility for AAs
- **PDT Recommendations:**
 - **Alternative 2:** PT access area allocations at 42,000 pounds, with a trip limit of 14,000 lbs
 - **Alternative 3:** PT access area allocations at 51,000, with a trip limit of 17,000 lbs
 - **Alternative 4:** LA PT access area allocations at 48,000, with a trip limit of 15,000 lbs
- All Alternatives: one (1) CAI-FLEX trip, one (1) NLS-West trip, and one (1) Mid-Atlantic access area trip. (3 total trips)
- These options have been incorporated into the draft alternatives, and can be modified.

Opportunity to Fish AA Trips in FY 2020

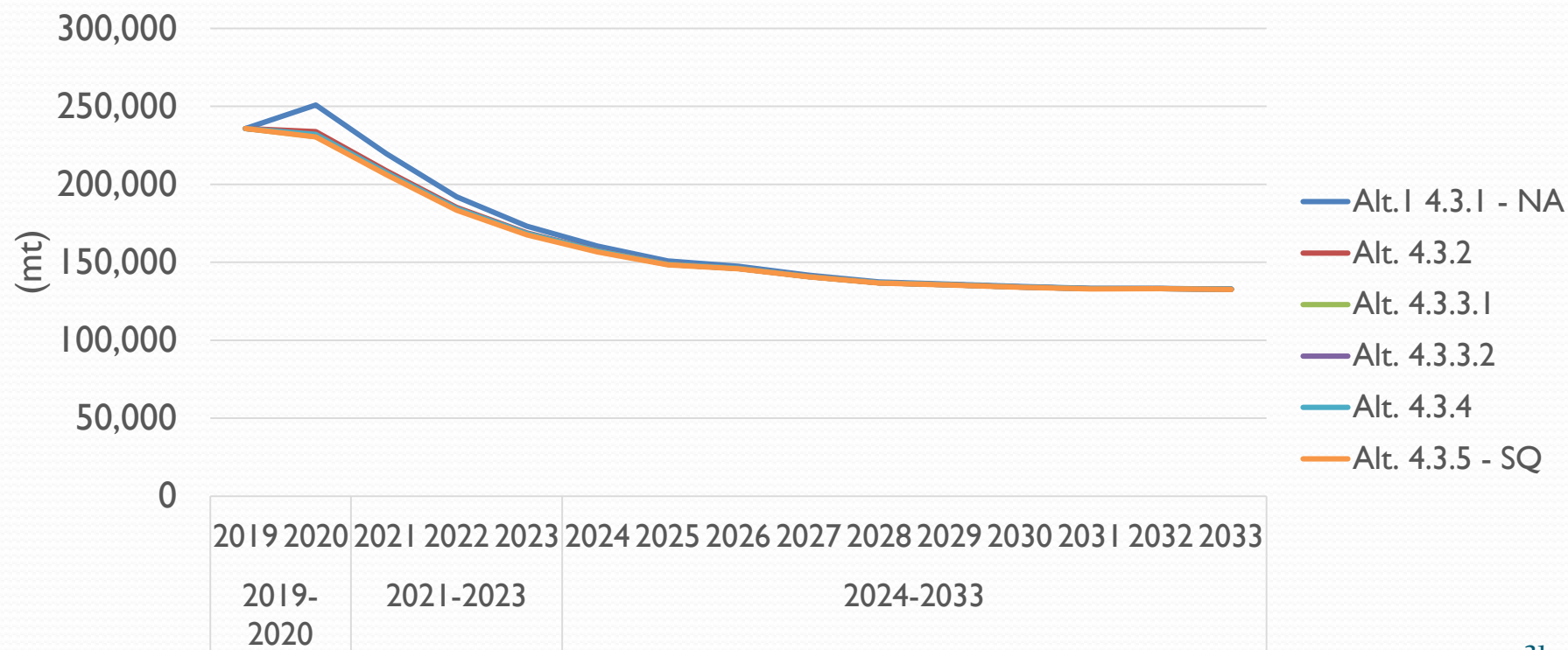
- LA access area trips would be available in the same access areas defined by Framework 30 for the first 60 days of FY 2020, even if the area is scheduled to close in FY 2020.
- Vessels must start their trip (i.e., position on their VMS unit seaward of the demarcation line) by 23:59 on May 30, 2020.
- For example, trips allocated to the Nantucket Lightship-West access area could only be fished in the access area boundary defined by FW30 in the first 60 days of FY 2020.

Opportunity to Fish AA Trips in FY 2020



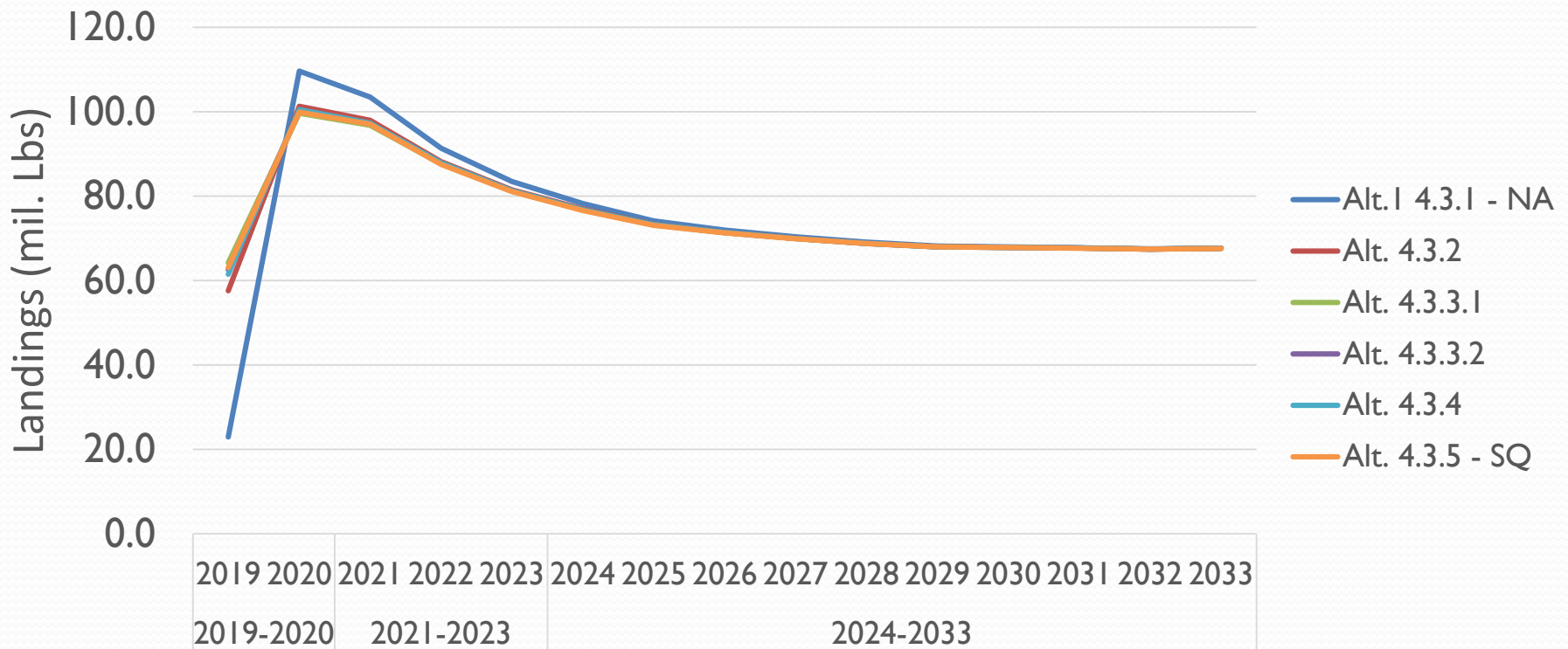
Projected Biomass

- Overall the projected biomass estimates are similar in the short and long run.
- No Action (default measures, lowest allocation), results in slightly higher biomass in the short term.



Biological Considerations

- Overall F for all runs less than $F=0.15$.
- Risk of overfishing is low for all alternatives under consideration.
- LT Landings projections reflect partial approval of OHA2.



Summary of Economic Impacts

Section Alternative	4.3.1 Alt.1	4.3.2 Alt.2	4.3.3.1 Alt.3	4.3.3.2 Alt.3	4.3.4 Alt.4	4.3.5 Alt.5
Values/ RUN	No Action	7at15k	F25FLEX18k	24DASFLEX18k	24DASFLEX15k	Status Quo
DAS (F)	18	26 (F=0.25)	26 (F=0.25)	24 (F=0.23)	24 (F=0.23)	30 (F=0.295)
Landings	22.9	57.6	64.2	62.5	61.5	63.0
Revenue	241.7	542.4	587.5	577.5	569.8	578.9

- Revenue estimates range from \$542.4 to \$587.5 million dollars across range of alternatives.
- Alternative 3 with 26 DAS may result in **higher benefits** compared to Status Quo.
- Alternative 3 with 24 DAS results in nearly the same **benefits** as SQ
- Differences in benefits of specification alternatives would be small both in the short- and long-term.
- Compared to FW29 alt., not much difference between options in FW30.

Summary of EFH Impacts

- Spatial management focuses harvest on high densities of large animals
- All FW30 Alternatives appreciably less swept area than SQ

	Alt. 2	Alt. 3.1	Alt. 3.2	Alt. 4	Status Quo
Section	4.3.2	4.3.3.1	4.3.3.2	4.3.4	4.3.5
Scenario	7 trips 15k 26DAS	7 trips 18k, FLEX 26DAS	7 trips 18k, FLEX 24DAS	7 trips, 15k FLEX 24DAS	6 trips 18k, 30 DAS (F=0.295)
Total Swept Area (sq nm)	2,336	2,443	2,278	2,251	2,802
Total Landings	57.6 mil lbs	64.2 mil lbs	62.5 mil lbs	61.5 mil lbs	63.0 mil. Lbs

Impacts: Flatfish Bycatch Estimates

- The projections are forecasts (with error) and should not be taken as precise estimates.
- Preliminary estimates for GB YT, Northern Windowpane, Southern Windowpane, and SNE/MA YT flounder are **below** expected sub-ACLs for FY 2019.

Section	DAS	NWP	SWP	SNE MA YT	GBYT	Total
Anticipated 2019 sub-ACL (GF FW58)		18 mt	158 mt	15 mt	17 mt	
4.3.1	18	5.69	36.88	1.43	9.39	53.39
4.3.2	26	8.77	63.38	2.86	13.15	88.16
4.3.3.1	26	8.55	67.5	3.05	13.01	92.11
4.3.3.2	24	8.02	64.03	2.9	11.48	86.43
4.3.4	24	7.87	64.03	2.9	12.04	86.84
Status Quo	30 (F=0.295)	10.3	108.35	4.79	15.1	138.54

Summary of Protected Resources Impacts

- There are fewer PR interaction concerns in NLS-West or CAI-N (turtles or sturgeon) vs. MAAA.
- Alternatives with 15,000 lb trips in MAAA may have positive impact relative to 18,000 lb options.
- Harvest in MAAA is comparable to recent levels (FW27)
- DAS fishing anticipated across GB and MAAA
- NGOM fishery not anticipated to have seasonal overlap with PR.

Framework 30 Measures

Document 3a: “Decision Document”

Version I (11/21/18)

- Summary of Measures
- High Level Impacts

DECISION DOCUMENT
for
Framework Adjustment 30
to the
Atlantic Sea Scallop FMP

Advisory Panel and Committee Copy (11/21/18, version 1)

This decision document will be updated again for the Council on November 30, 2018, and after the Advisory Panel and Committee meet to reflect their input on alternatives under consideration in this action.



Scallop AP and Committee Meetings
November 27 & 28, 2018
Providence, RI

This decision document was developed to assist the Advisory Panel and Committee to provide the Council with input on measures in Scallop Framework Adjustment 30.

Document 3: Draft Framework 30 v.2 – Council Mailing Update Sent 11/26/18

This is the document that
is sent to NMFS

**AP and Committee Draft
November 21, 2018**

Note: FW30 will be updated for Council Mailing

Framework 30 to the Scallop FMP

Including a Draft Environmental Assessment (EA), an Initial Regulatory Flexibility Analysis and Stock Assessment and Fishery Evaluation (SAFE Report)

Initial Council Meeting: June 13, 2018
Final Council Meeting:
Submission of Decision Document:
Submission of Preliminary EA:
Submission of Final EA:

Section 4.1 – OFL and ABC

- SSC Approved PDT Recommendation for OFL and ABC.
- Survey estimates and projections were adjusted to account for observed slow growth in the Nantucket Lightship areas.
- Even with modifications to model parameters, increases in OFL, and ABC

	FY	OFL	ABC including discards	Discards	ABC with discards removed
Alt. 1 – No Action	2019	69,633	58,126	12,321	45,805
Alt. 2 – Updated OFL and ABC	2019	73,421	62,989	5,986	57,003
	2020	59,447	50,943	4,915	46,028

Section 4.1 – OFL and ABC

- Document 3a: Page 3

Section 4.1	OFL and ABC		PDT Pref.	AP Pref.	CTE Pref.
4.1.1	Alt. 1	No Action for OFL and ABC			
4.1.2	Alt. 2	Updated OFL and ABC for FY2019 and FY2020 (default)	**		

- PDT supports updating OFL/ABC, 4.1.2

Section 4.2 - Northern Gulf of Maine

- Both alternatives maintain changes recommended in FW29:
 1. Cap removals for all fishery components, and develops separate TACs for LA and LAGC
 2. TAC Shares: First 70k lbs to LAGC, then 50/50 split
 3. LA share of NGOM TAC could only be fished as NGOM RSA compensation pounds. Additional reporting requirements (VMS hauls) for these trips. Preference to research projects in area.
 4. Overages deducted from following year's TAC
- *Rationale:* This TAC split is intended to be a short term solution to allow controlled fishing in the NGOM management area until a future action can be developed to address NGOM issues more holistically. Not intended to be permanent.

Section 4.2 - Northern Gulf of Maine

FW 30 Alternative	FW 30 Section	F	2019 TAC (lbs)	2019 LA/RSA Share (lbs)	2019 LAGC Share (lbs)	2020 TAC (lbs)
Alternative 1	4.2.1		135,000	32,500	102,500	0
2, Sub-Option 1	4.2.2.1	0.20	205,000	67,500	137,500	170,000
2, Sub-Option 2	4.2.2.2	0.25	250,000	90,000	160,000	200,000

- Alternative 2: Based on projected exploitable biomass on Stellwagen Bank, Ipswich Bay, and Jeffrey's Ledge.
- Oldest/largest animals on Stellwagen Bank ($F=0.4 \rightarrow 190k$)
- Multiple cohorts in Ipswich Bay, largest YC $\approx 115mm$ 2019
- Incoming recruitment on Jeffreys Ledge

Section 4.2 – NGOM

- Document 3a: Page 5

4.2 - Northern Gulf of Maine TAC			PDT Pref.	AP Pref.	CTE Pref.
4.2.1	Alt. 1	No Action (135,000 lb TAC)			
4.2.2	Alt. 2	Set NGOM TAC using exploitable biomass projections for 2019 and 2020, cap removals for all fishery components, and apply LA share of TAC toward RSA compensation fishing. NGOM TAC split: first 70,000 lbs to LAGC, then 50/50 split	**		
4.2.2.1	Alt. 2 – Sub-Option 1	Set NGOM TAC at F=0.20 2019: 205,000 lbs; 2020: 170,000 lbs	**		
4.2.2.2	Alt. 2 – Sub-Option 2	Set NGOM TAC at F=0.25 2019: 250,000 lbs; 2020: 200,000 lbs			
Decisions/Questions/Information to Consider:					
The Council has developed a range of measures in FW30 that are consistent with management changes made through Framework 29.					

Section 4.3 – Specifications

- Document 3a: Page 10

Section	DAS	Scenario	APL	LA Share	IFQ-only
b	c	d	f	f x 0.945	f x 0.05
4.3.1	18 DAS	One MAAA at 18k	20,369,236	19,248,928	1,018,462
4.3.2	26 DAS	7 trips at 15k	55,012,675	51,986,978	2,750,634
4.3.3.1	26 DAS	7 trips at 18k (FLEX)	61,637,566	58,247,500	3,081,878
4.3.3.2	24 DAS	7 trips at 18k (FLEX)	59,986,304	56,687,057	2,999,315
4.3.4	24 DAS	1 CAI FLEX trip at 15k, 6 trips at 18k	58,930,290	55,689,124	2,946,514
4.3.5	30 DAS	For Comparison Only	60,488,958	57,162,065	3,024,448
FW29	24 DAS	For Comparison Only	57,506,104	54,343,268	2,875,305

Section 4.3 – Specifications

• Document 3a: Page 11

4.3 – Fishing Year 2019 & 2020 Specifications			PDT Pref.	AP Pref.	CTE Pref.
4.3.1	Alt. 1	No Action: 1 trip to MAAA, 18 DAS			
4.3.2	Alt. 2	7 Access area trips (15,000 lb trip limit): 1 CAI; 3 NLS-W; 3 MAAA. FT LA DAS: 26 (F=0.25)			
4.3.3.1	Alt. 3 – sOption 1	7 Access area trips (18,000 lb trip limit): 1 FLEX CAI; 3 NLS-W; 3 MAAA. FT LA DAS: 26 (F=0.25)			
4.3.3.2	Alt. 3 – sOption 2	7 Access area trips (18,000 lb trip limit): 1 FLEX CAI; 3 NLS-W; 3 MAAA. FT LA DAS: 24 (F=0.23)	**		
4.3.4	Alt. 4	7 Access area trips (15,000 lb and 18,000 lb trip limits): 1 CAI I-FLEX (15k), 3 NLS-W (18k), 3 MAAA (18k) FT LA DAS: 24 (F=0.23)			

Section 4.4 – LAGC IFQ AA Allocations

- Document 3a: Page 12

- ***One decision this year (allocation + where trips can be fished)***
- **4.4.1 - Alt 1. – No Action**
 - Default Trips (558 trips) to MAAA
- **4.4.2 – Alt. 2 – Total trips based on 5.5% of the total Access Area Allocations, allocate trips proportionally to each area, and allocation Flex trips to CA I AA.**
 - Trip range: 3,331 – 3,996
 - Allocated trips: 1/7th to CAI, 3/7th to NLS-West , 3/7th to MAAA

Section 4.4 – LAGC IFQ AA Allocations

• Document 3a: Page 12

Specs. Alt.	Description	LAGC IFQ Trips	Closed Area I	NLS-West	MAAA
		Total Trips	Allocated LAGC Trips to Each Access Area		
4.3.1 - Alt. 1	No Action	558			558
4.3.2 - Alt. 2	7 trips at 15k	3,331	476	1427	1427
4.3.3 - Alt. 3	7 trips at 18k	3,996	571	1713	1713
4.3.4 - Alt 4	1 trip at 15k 6 trips at 18k	3,902	476	1713	1713

Section 4.4 – LAGC IFQ AA Allocations

• Document 3a: Page 12

Section 4.5.1 – Allocation of the LAGC IFQ Trips in Access Areas			PDT Pref.	AP Pref.	CTE Pref.
4.4.1	Alt. 1	No Action (558 trips, default measure)			
4.4.2	Alt. 2	5.5% of overall access allocations <ul style="list-style-type: none"> • Trip range: 3,331 – 3,996 • Allocated trips: <ul style="list-style-type: none"> ○ 1/7th to CAI ○ 3/7th to NLS-West ○ 3/7th to MAAA 	**		

**PDT supports:
4.4.2 – Alternative 2**

Section 4.5 – Measures to Reduce Fishery Impacts

- Measure focuses on RSA compensation fishing.
- Alternative 2 considers restrictions on RSA compensation fishing in FY2019
 - NGOM Management Area (up to LA TAC)
 - CA I Access Area
- This leaves the following areas available for compensation fishing:
 - Open Areas
 - All other access areas that may open (NLS-W, MAAA)

Section 4.5 – Measures to Reduce Fishery Impacts

- Document 3a: Page 13

Section 4.5	Measures to Reduce Fishery Impacts		PDT Pref.	AP Pref.	CTE Pref.
4.5.1	Alt. 1	No Action, RSA Comp fishing restricted to open areas			
4.5.2	Alt. 2	RSA Comp fishing prohibited in CAI, and limited to LA TAC in NGOM	**		

- PDT supports Alt. 2

Section 4.6.1 – Default Specifications

- Document 3a: Page 14

Section 4.6.1 – Default Specifications			PDT Preferred	AP Preferred	CTE Preferred
4.6.1.1	Alt. 1	No Action			
4.6.1.2	Alt. 2	Standardize default open-area DAS for the LA component and LAGC IFQ quota allocation at 75% of the preferred alternative for the previous Fishing Year's allocation	**		

- PDT supports Alt. 2

Section 4.6.2 – LAGC IFQ Access Area Allocations

- Document 3a: Page 14

Section 4.6.2 – LAGC IFQ Allocations to Access Areas			PDT Preferred	AP Preferred	CTE Preferred
4.6.2.1	Alt. 1	No Action			
4.6.2.2	Alt. 2	Standardize LAGC IFQ access area allocations as 5.5% of the total expected access area harvest	**		

- PDT supports Alt. 2

January Meeting:

- **Goal: Begin work on 2019 Priorities (TBD)**
- AP scheduled for January 27, 2019
- Committee scheduled for January 28, 2019
- *Location: Hilton Garden Inn, Boston Logan*
- *2019 Priorities will be finalized at the December Council meeting (Thursday)*