

2020 Scallop Grades and LPUE update

Benjamin Galuardi (NOAA/NMFS/GARFO/APSD)

2020-09-15



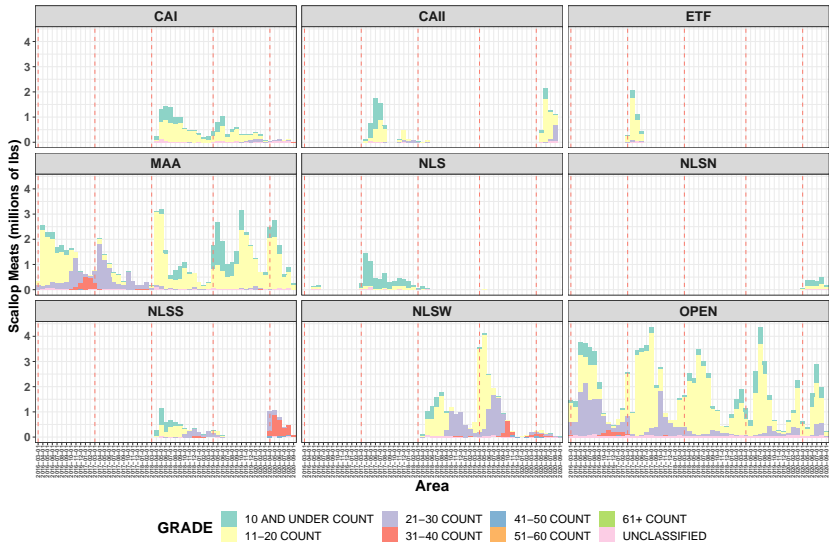


Figure 1: Scallop landings, by grade, within access areas and open areas for fishing years 2016 - 2020 (to date). Red dashed lines indicate start of fishing years.

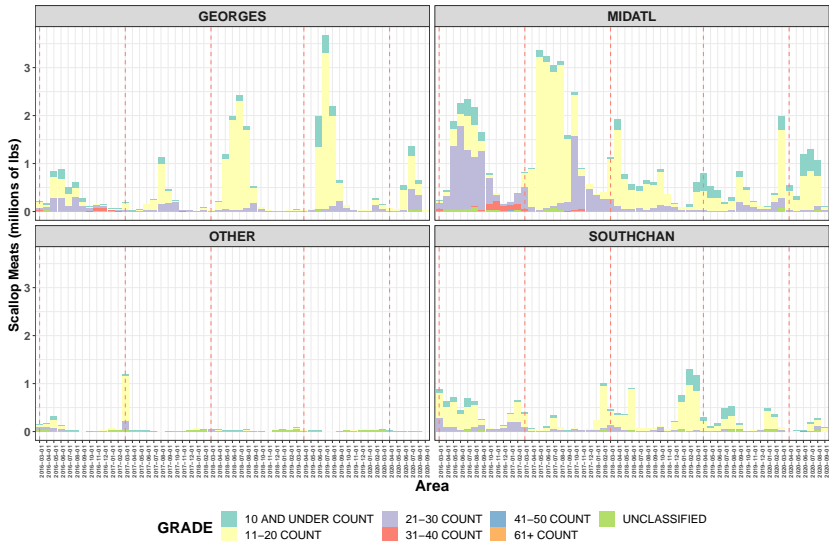


Figure 2: Scallop landings, by grade, Open Area Region, for fishing years 2016 - 2020 (to date). Red dashed lines indicate start of fishing year(s). Open areas were defined by statistical area as follows: SOUTHCHAN (521, 526), GEORGES (522 - 599, excluding 526), MIDATL (≥ 600), OTHER (all others, including NGOM)

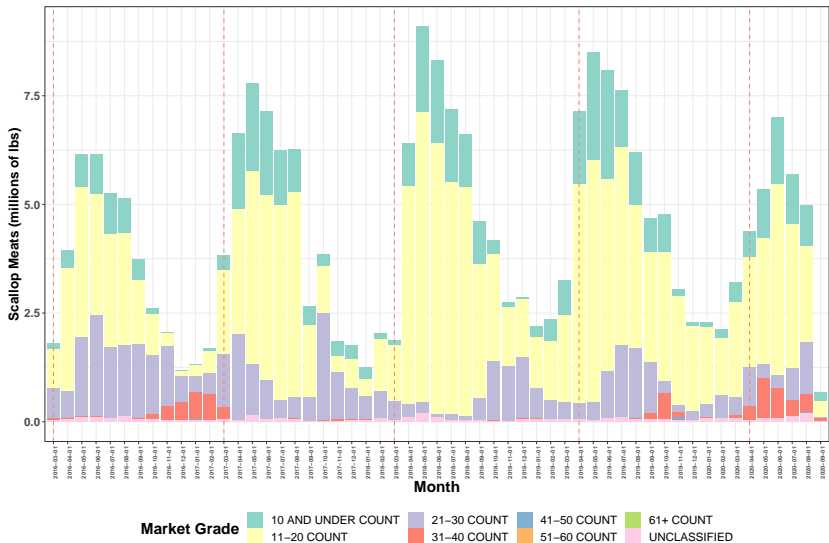


Figure 3: Monthly landings by grade (All areas combined)

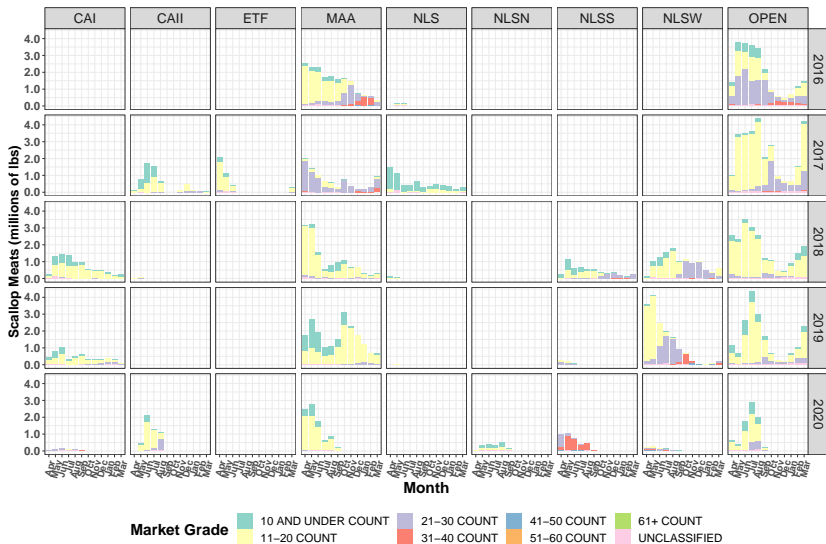


Figure 4: Scallop landings by month for fishing years 2016 - 2020, by market grade and Access/Open area.

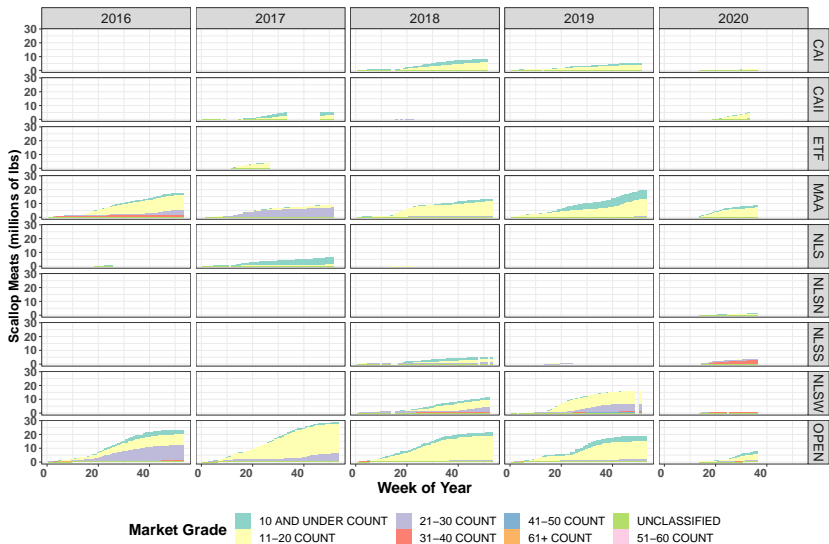


Figure 5: Cumulative landings, by week and grade for fishing years 2016-2020 (to date) for Access/Open areas.

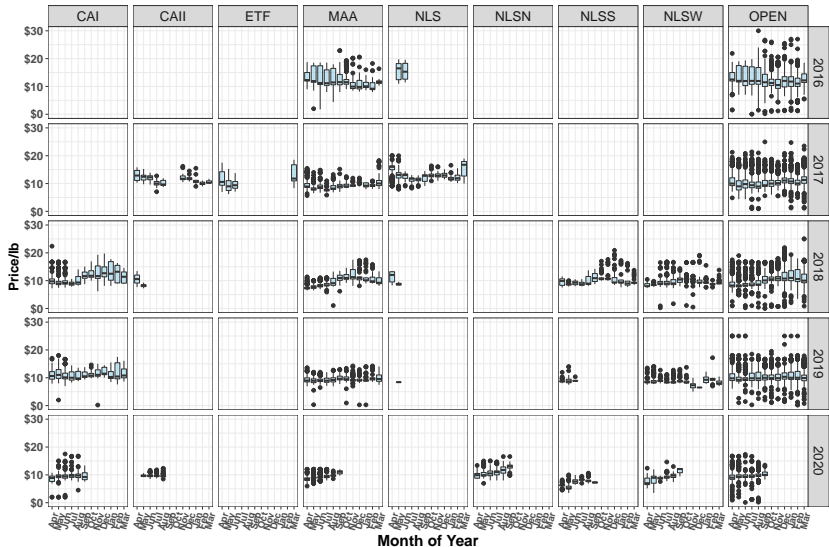


Figure 6: Boxplots of monthly price/pound for fishing years 2016-2020 (to date). Boxes indicate interquartile range (25% - 75%); thick, horizontal, black lines indicate monthly mean. Whiskers and dots show 95% range and outliers, respectively.

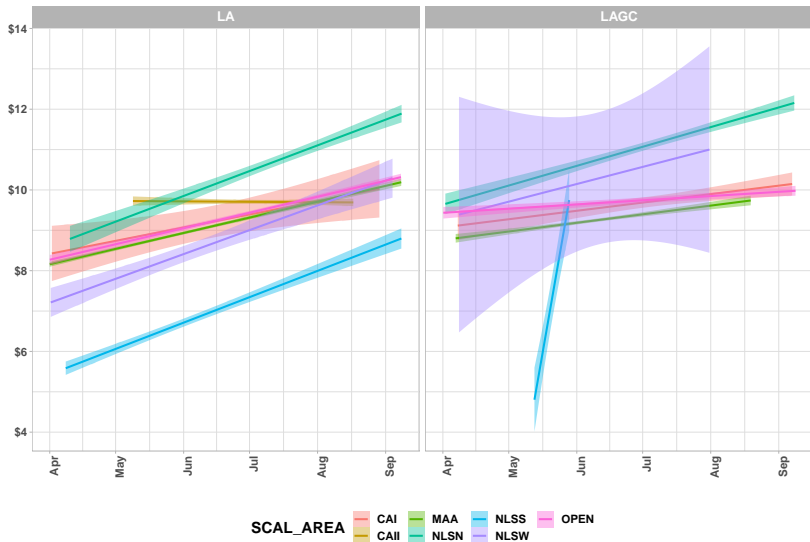


Figure 7: Average scallop price per trip by fleet and Area for Fishing Year 2020

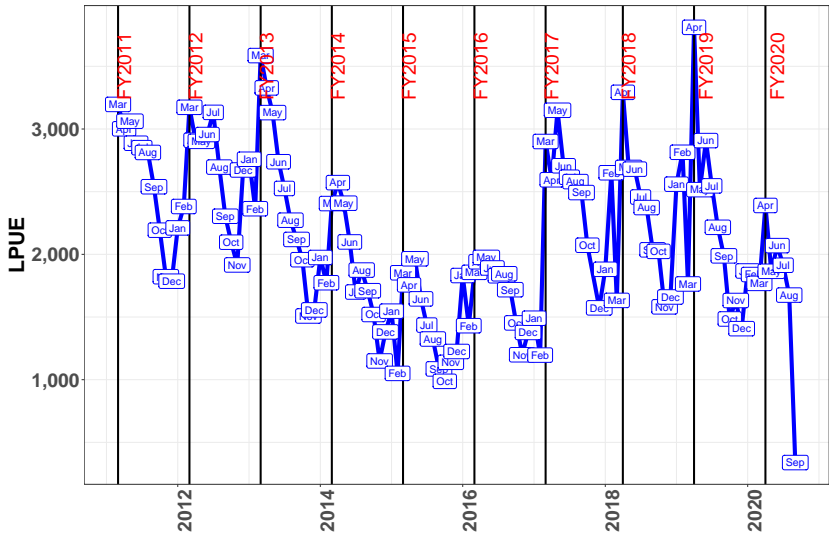


Figure 8: LPUE by month for Open Area Limited Access fishing. LPUE was calculated by dividing monthly scallop meat total landings by the days-at-sea charged.

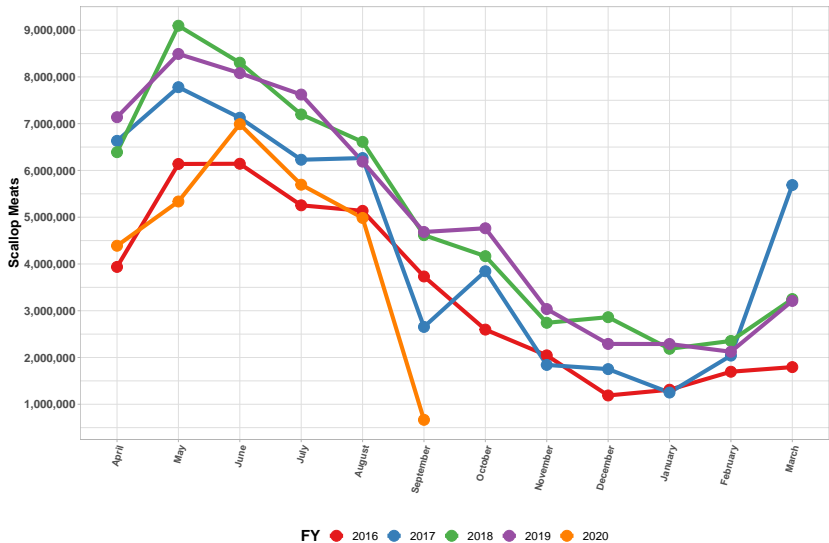


Figure 9: Total scallop landings by month, 2016-2020

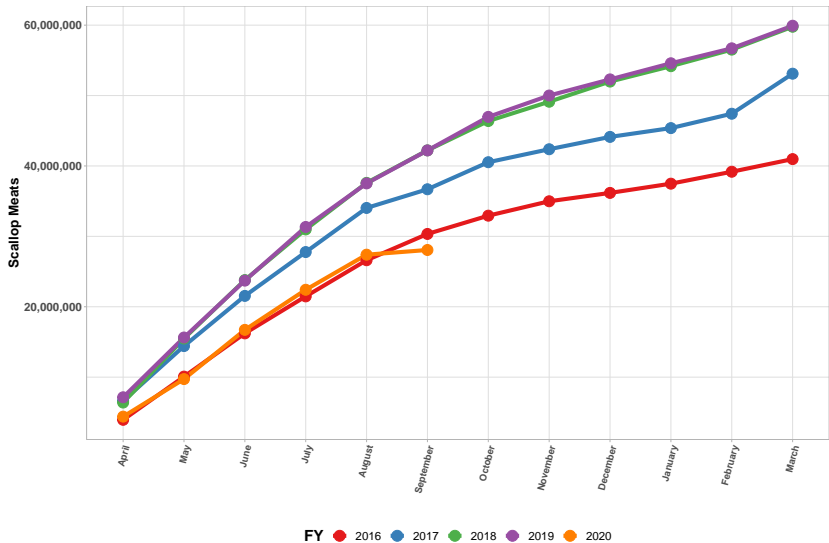


Figure 10: Cumulative landings, by month, for 2016-2020

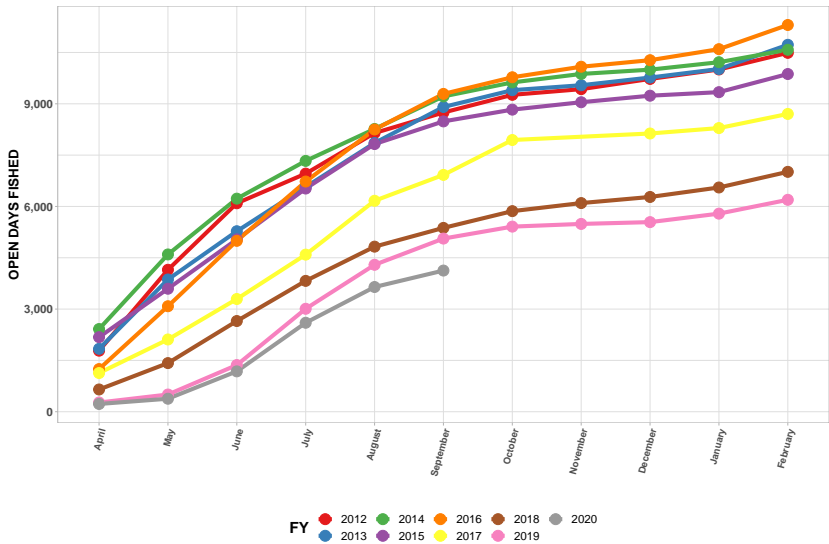


Figure 11: Cumulative open area days fished, for 2010-2020