



**NOAA
FISHERIES**

VMS summary for scallop fishing years 2016 and 2017

**Scallop Plan
Development Team
August 29-30, 2017**

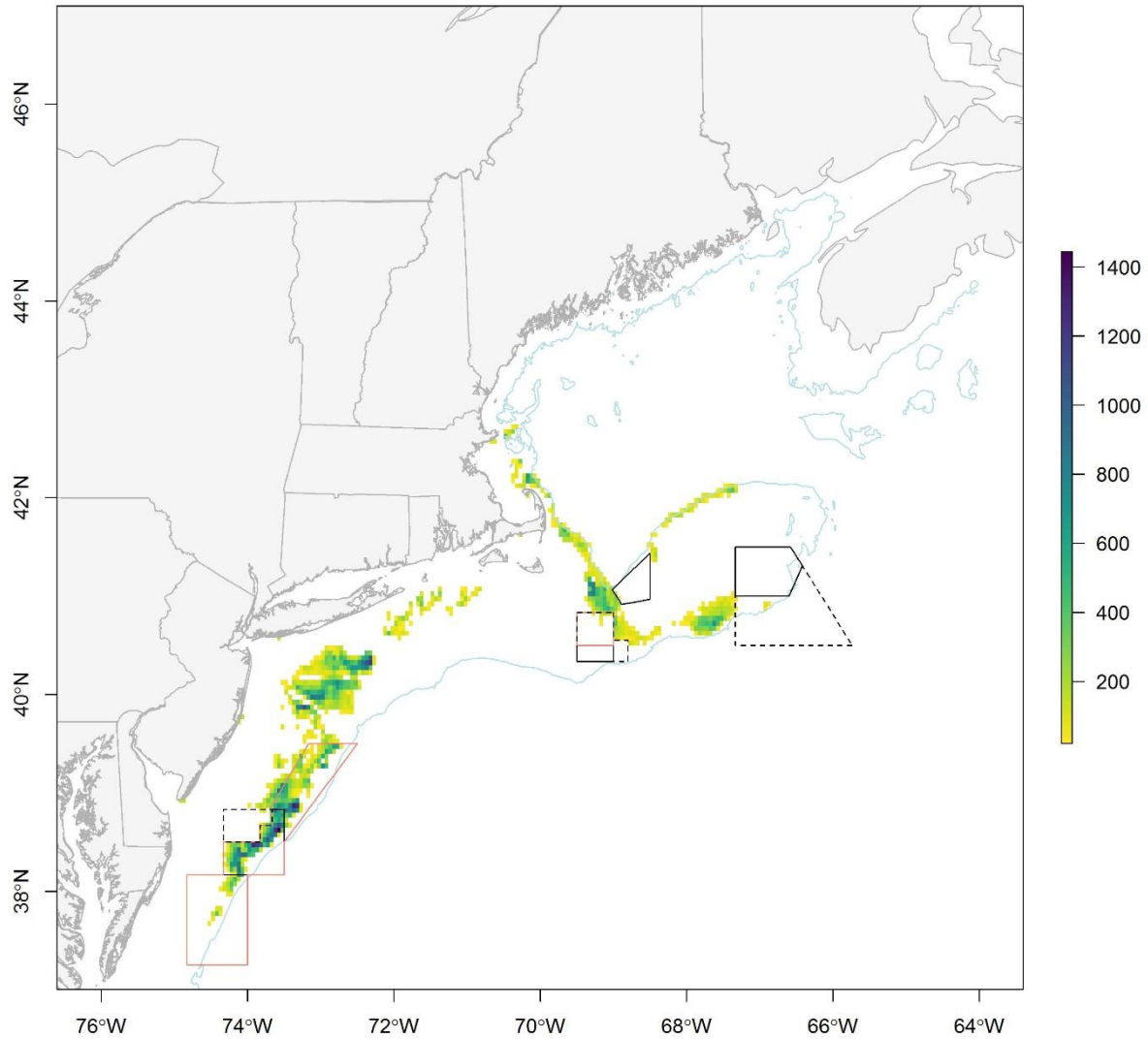
Benjamin Galuardi
NOAA/NMFS/GARFO/APSD

VMS as a proxy for effort

- **Sum of polls x time (~30 minutes/poll) = total hours**
- **Speed filter: ≤ 2 kts and ≤ 5 kts**
- **3-minute squares**
- **≥ 3 unique vessels/square**
- **Minimum effort/square**
 - **LAGC: 20**
 - **LA: 100**

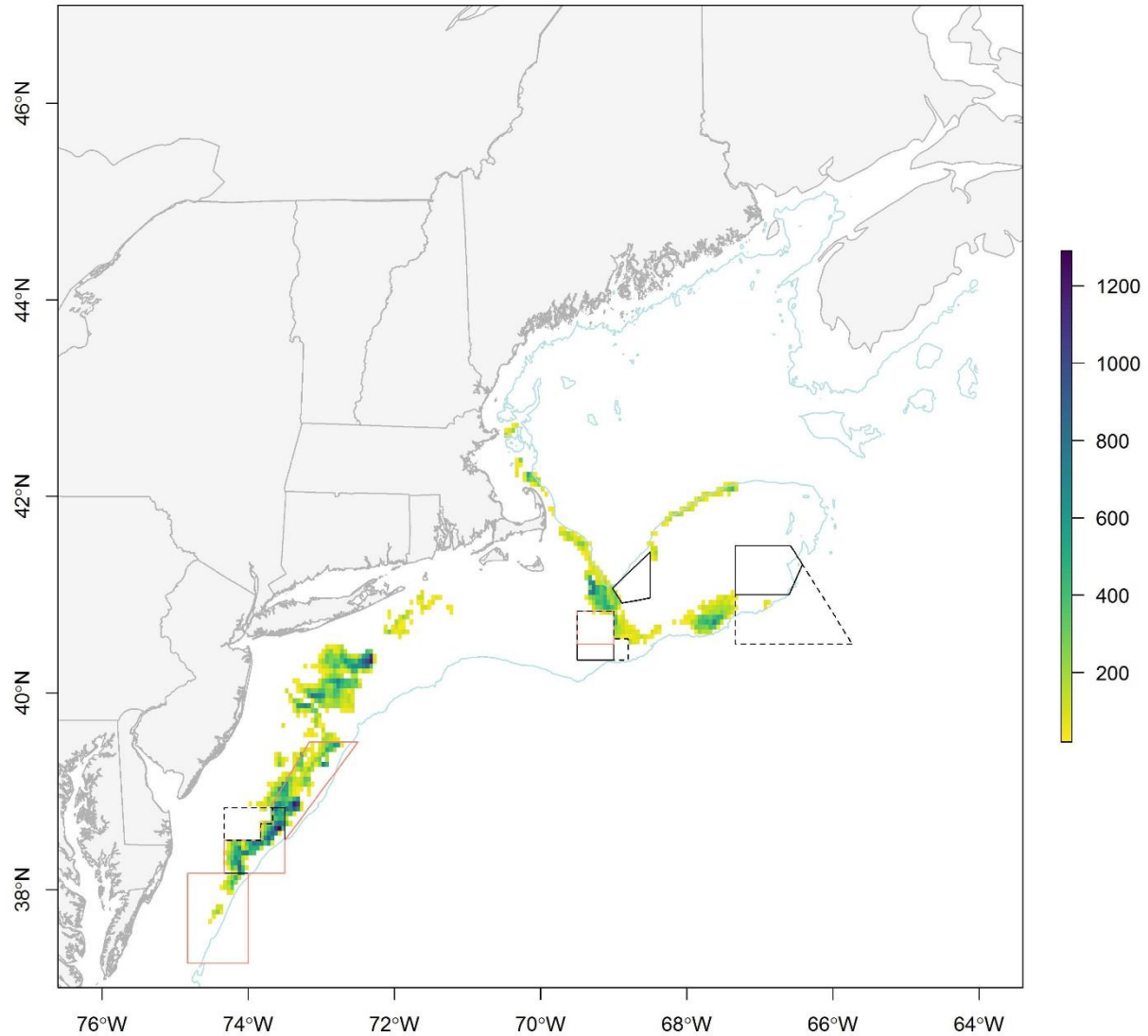
FY 2016: All vessels

Scallop Fishery Effort 2016 (hours)



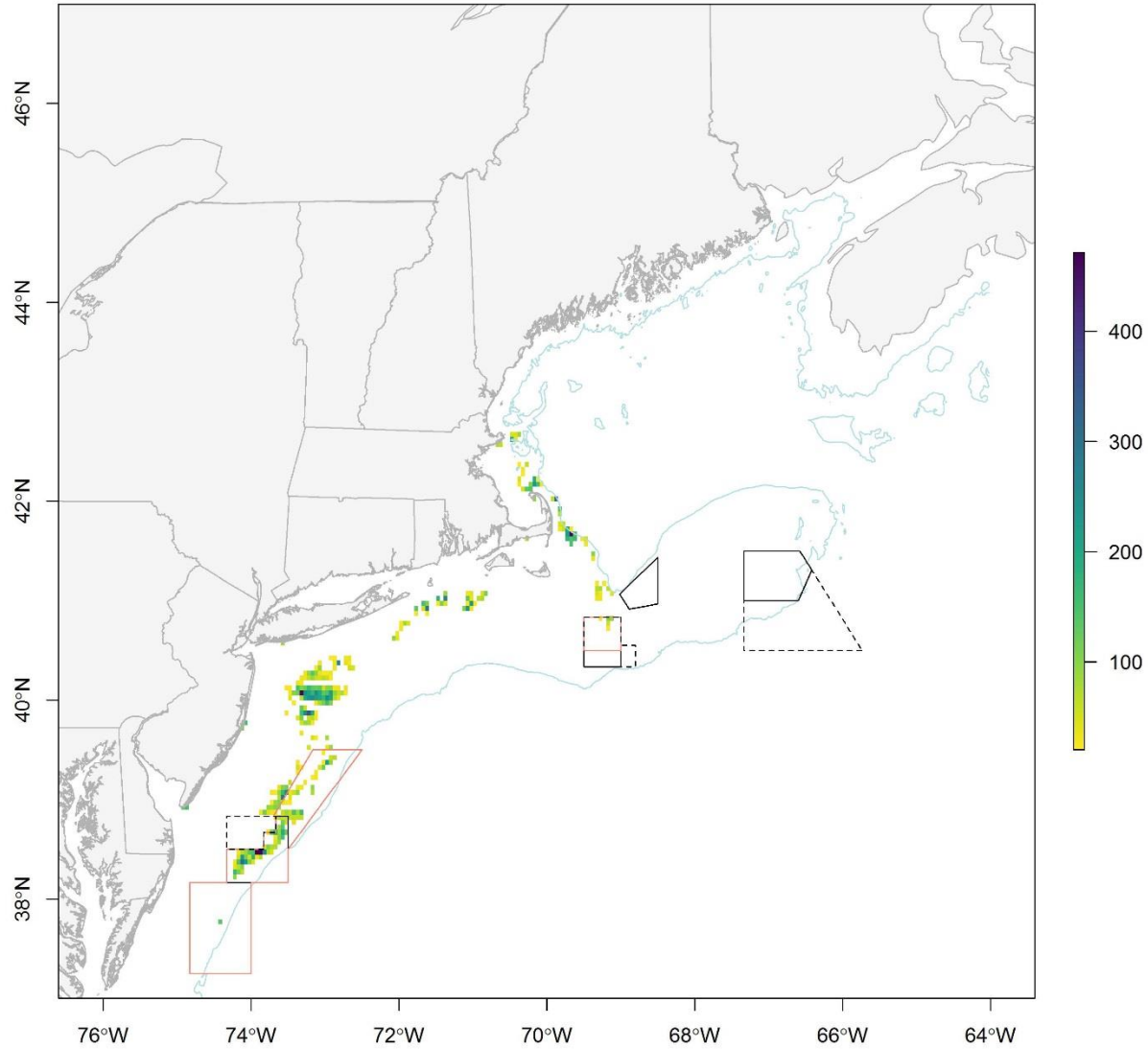
FY 2016: Limited Access

Limited Access Effort 2016 (hours)



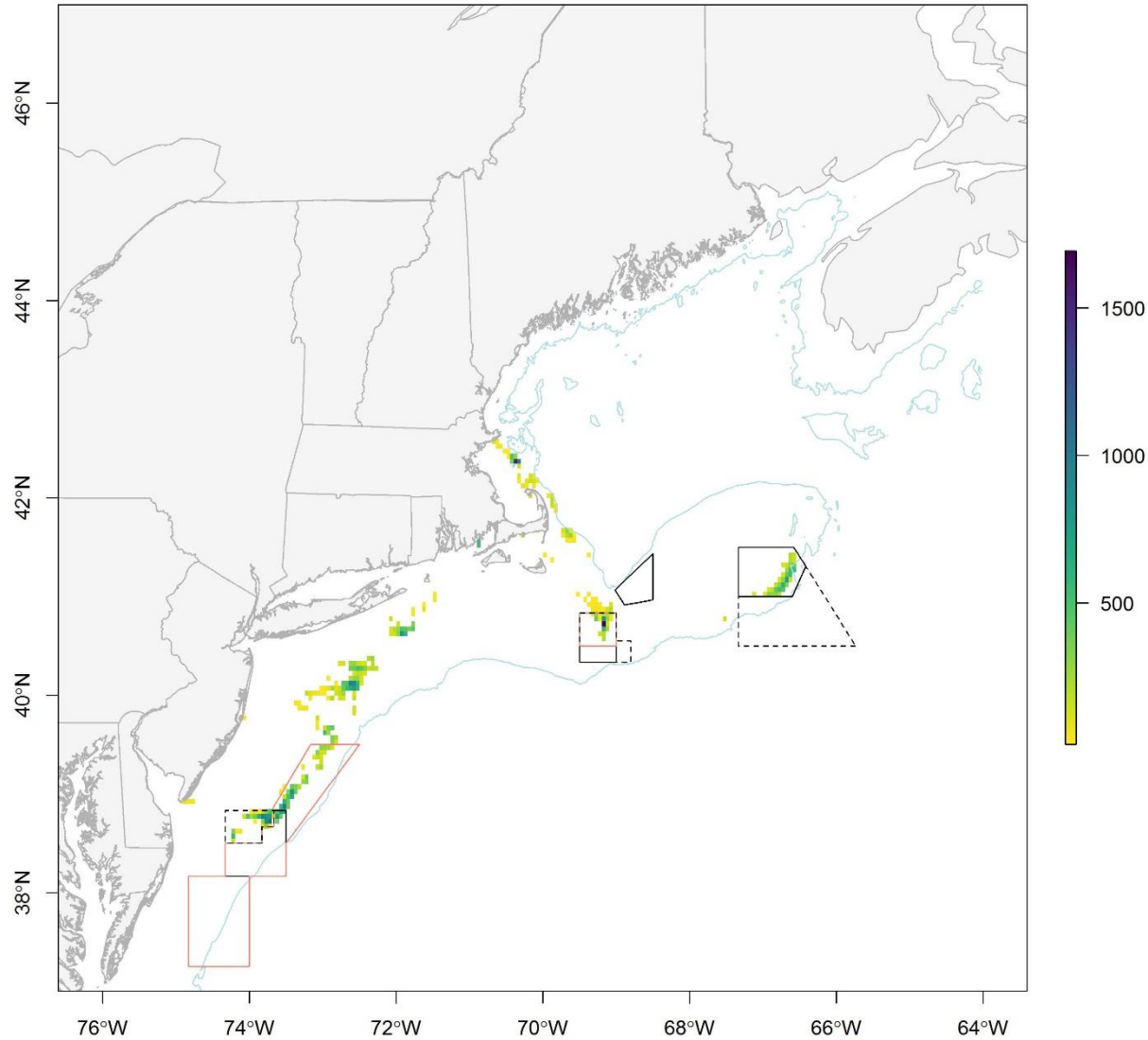
FY 2016: General Category

General Category Effort 2016 (hours)



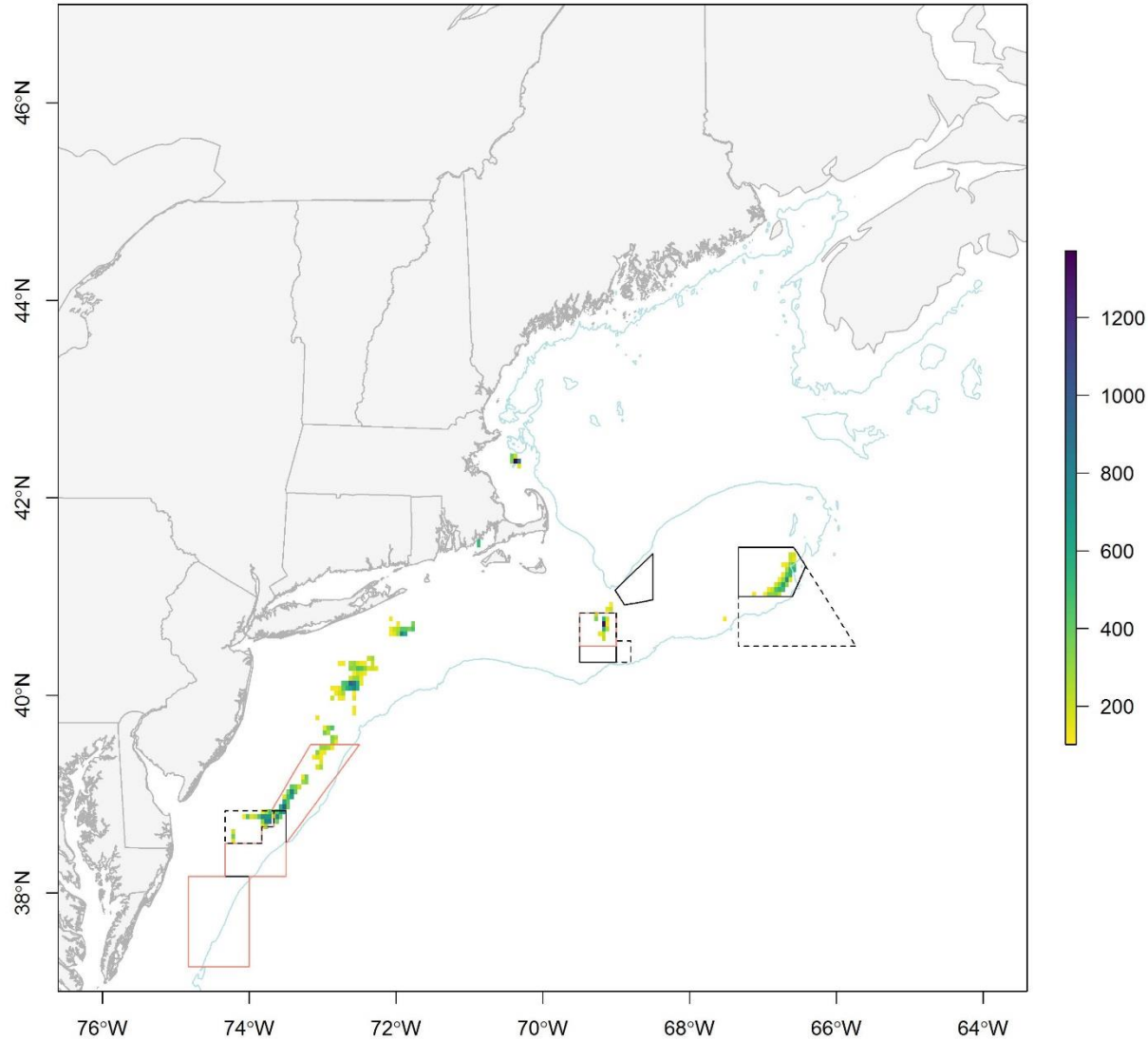
FY 2017: All Vessels (March – July)

Scallop Fishery Effort 2017 (hours)



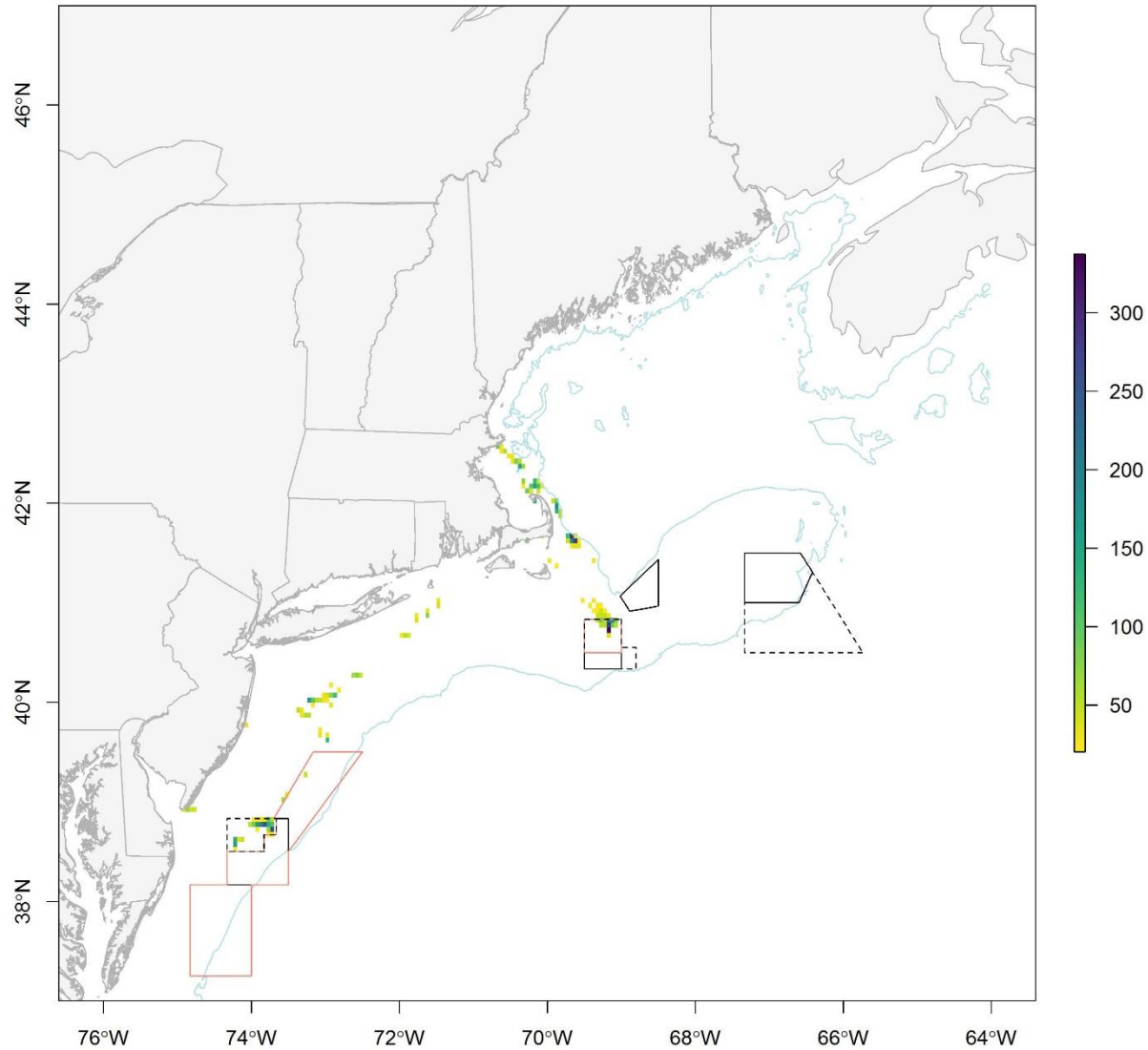
FY 2017: Limited Access (March – July)

Limited Access Effort 2017 (hours)



FY 2017: General Category (March – July)

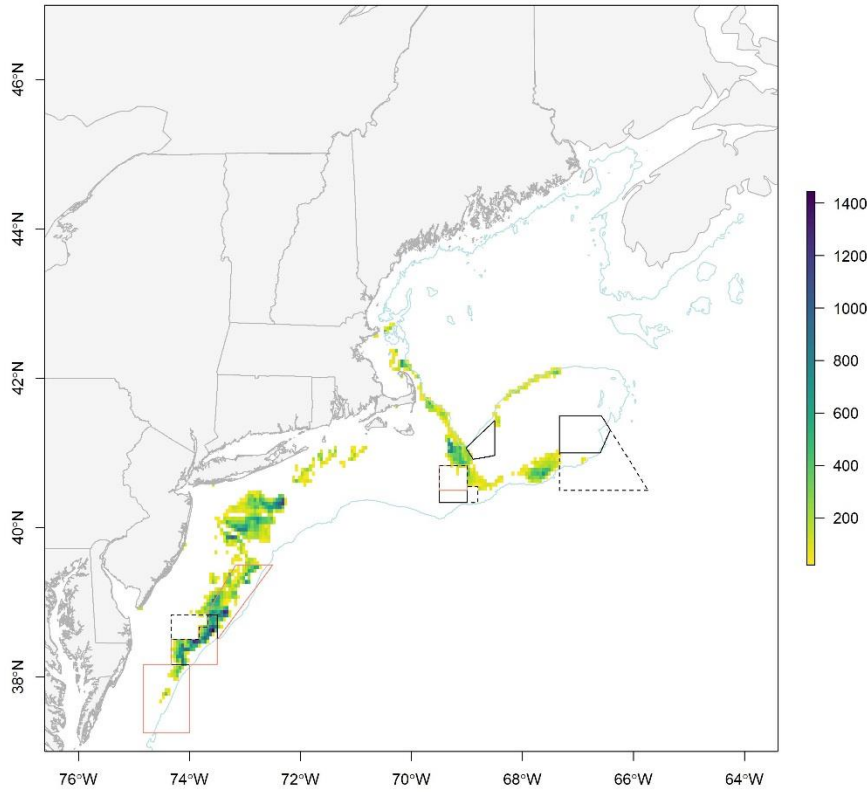
General Category Effort 2017 (hours)



Comparison

2016

Scallop Fishery Effort 2016 (hours)



2017

Scallop Fishery Effort 2017 (hours)

