

2017 SMAST Stellwagen Bank Drop Camera Survey Results

#1.2.2

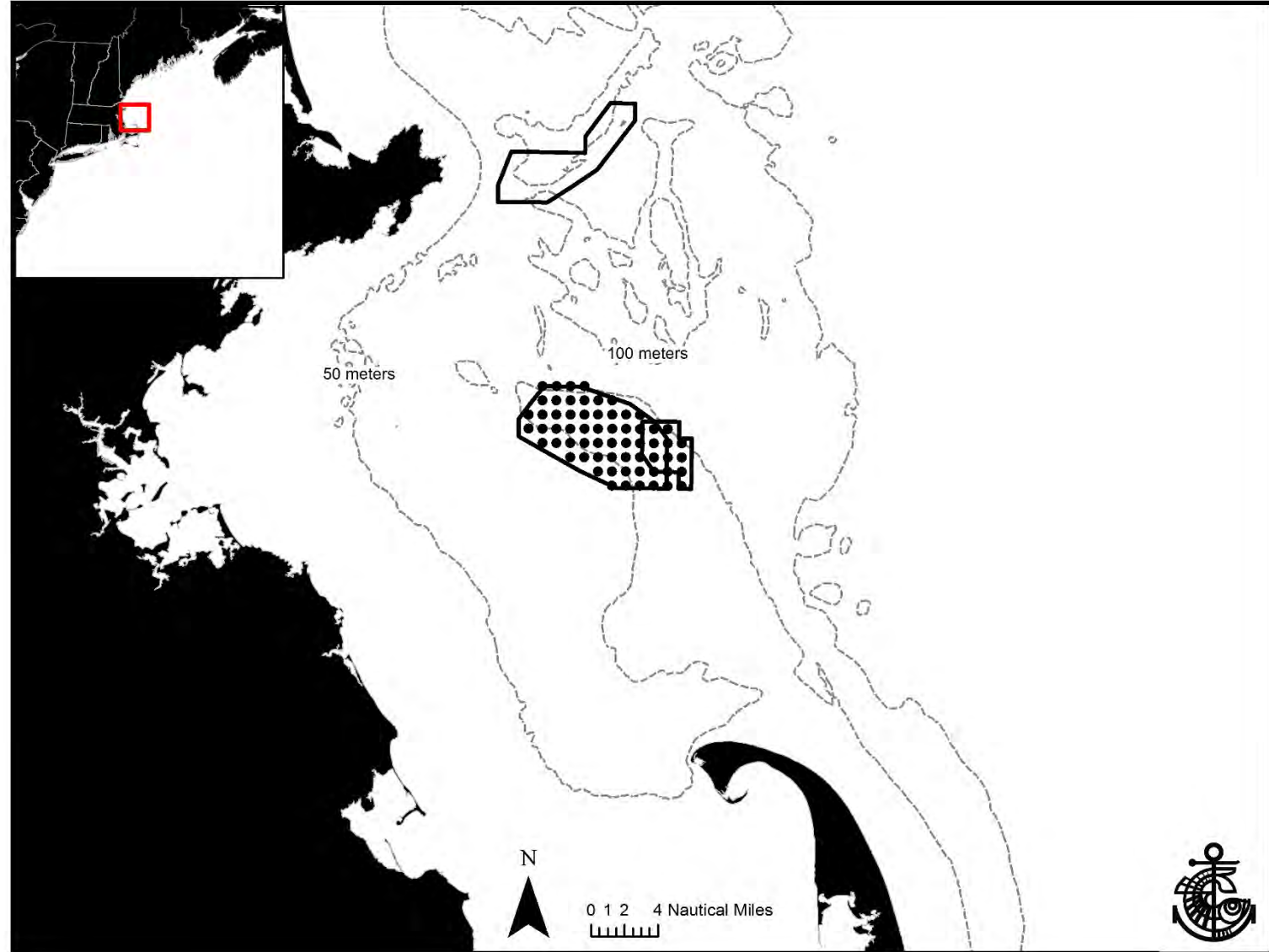
Scallop PDT Meeting
August 29-30, 2017

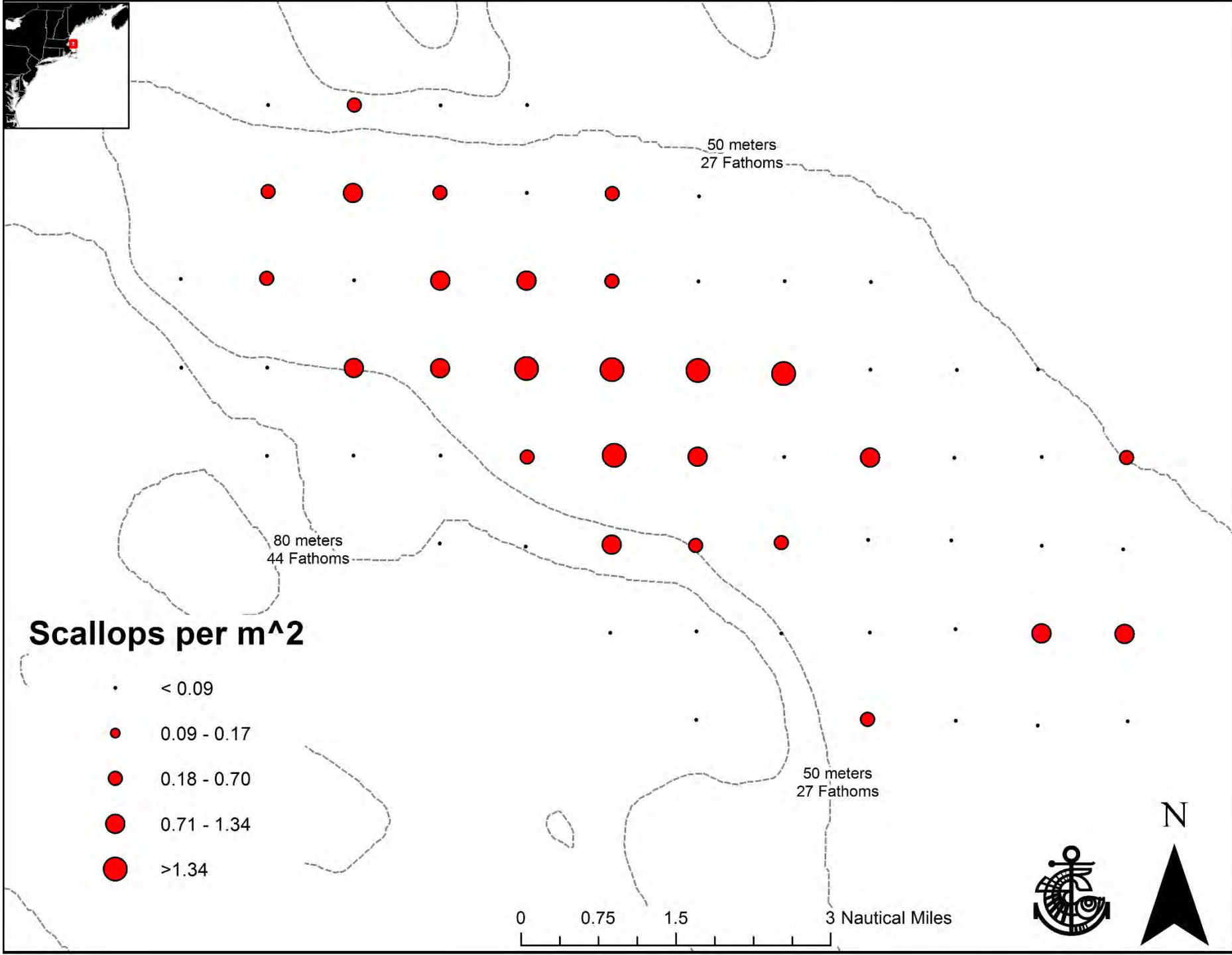


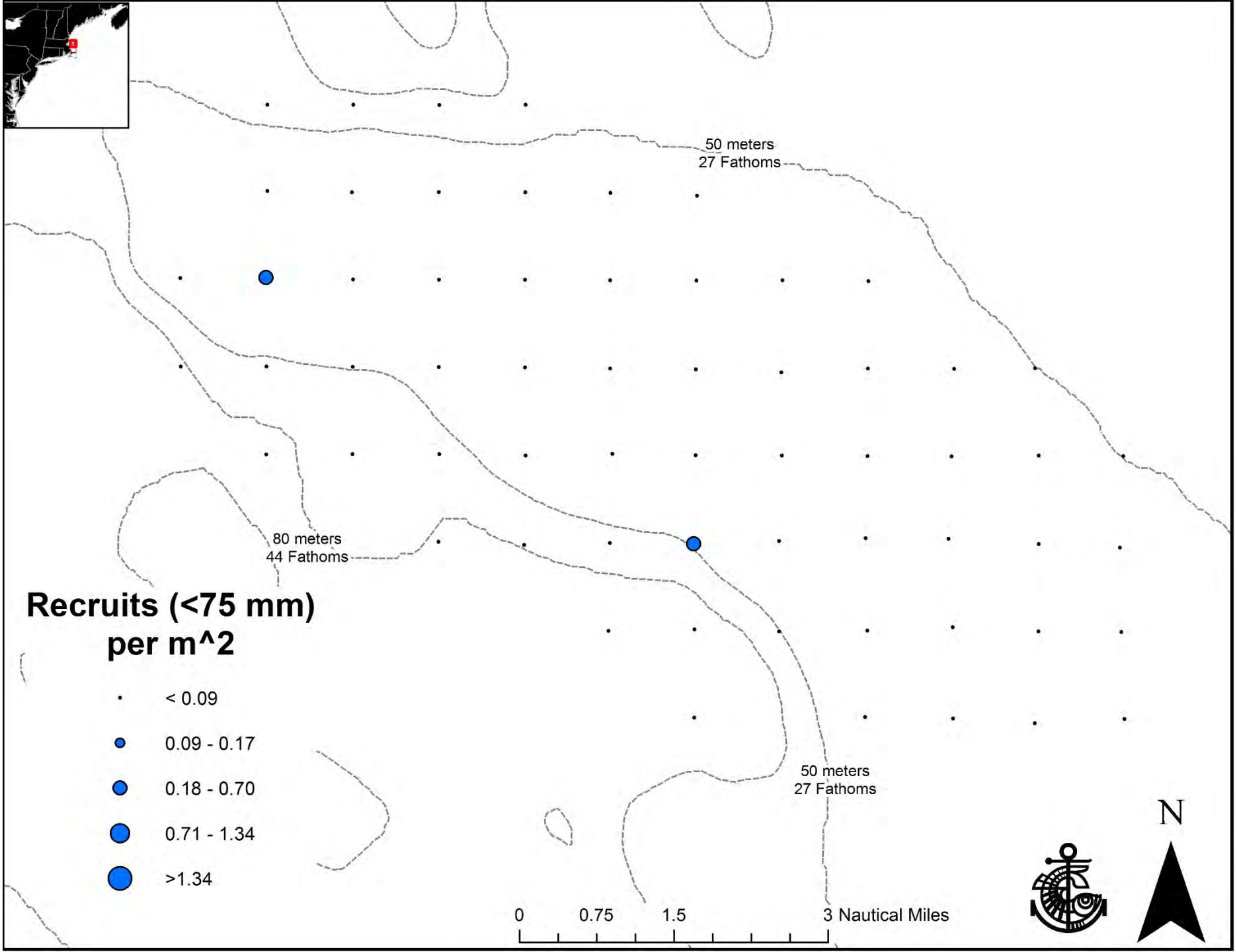
**University of Massachusetts Dartmouth
School for Marine Science and Technology**

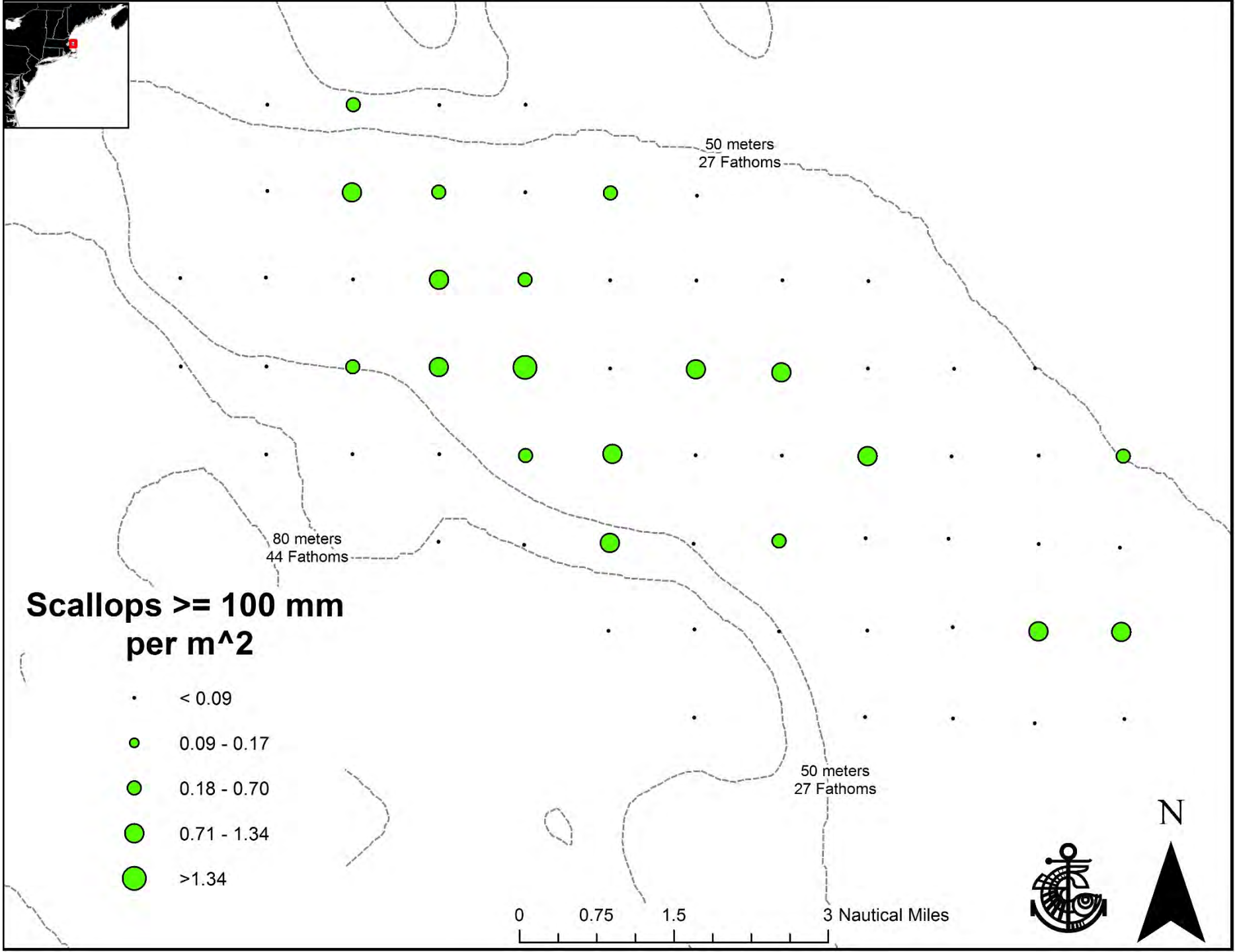
Stellwagen Bank Survey

- F/V Guidance – July 7-13
- Imperx Digital Still
- 0.8 nmi (1.5 km) grid









Stellwagen Bank Survey

Area	QuadratArea	meanSH	NumberMeasured	ScallopDensity	StationCount	SE	CV%	ScallopAbundance	WeightedLatitude	WeightedDepth	meanMTWT
Stellwagen 0.8 nmi	2.61	102.61	54	0.1	63	0.02	19.48	13,786,702	42.39	34.09	25.82

TotalBiomassMillLbs	TotalBiomassMT	SEofTotalBiomassMT	ExploitablemeanMTWT	ExploitableBiomassMillLbs	ExploitableBiomassMT	SEofExploitableBiomassMT
0.8	356	69	30.35	0.5	228	44



Questions/Discussion

Thank you to all involved in SMAST Drop Camera Survey:

Students, Staff, Captains, Crew, Vessel Owners, Fuel and Food Donators