

Complete FY2018 VMS data

Sam Ascii
Council Staff

Scallop PDT—July 24, 2019
Boston, MA



New England
Fishery Management
Council

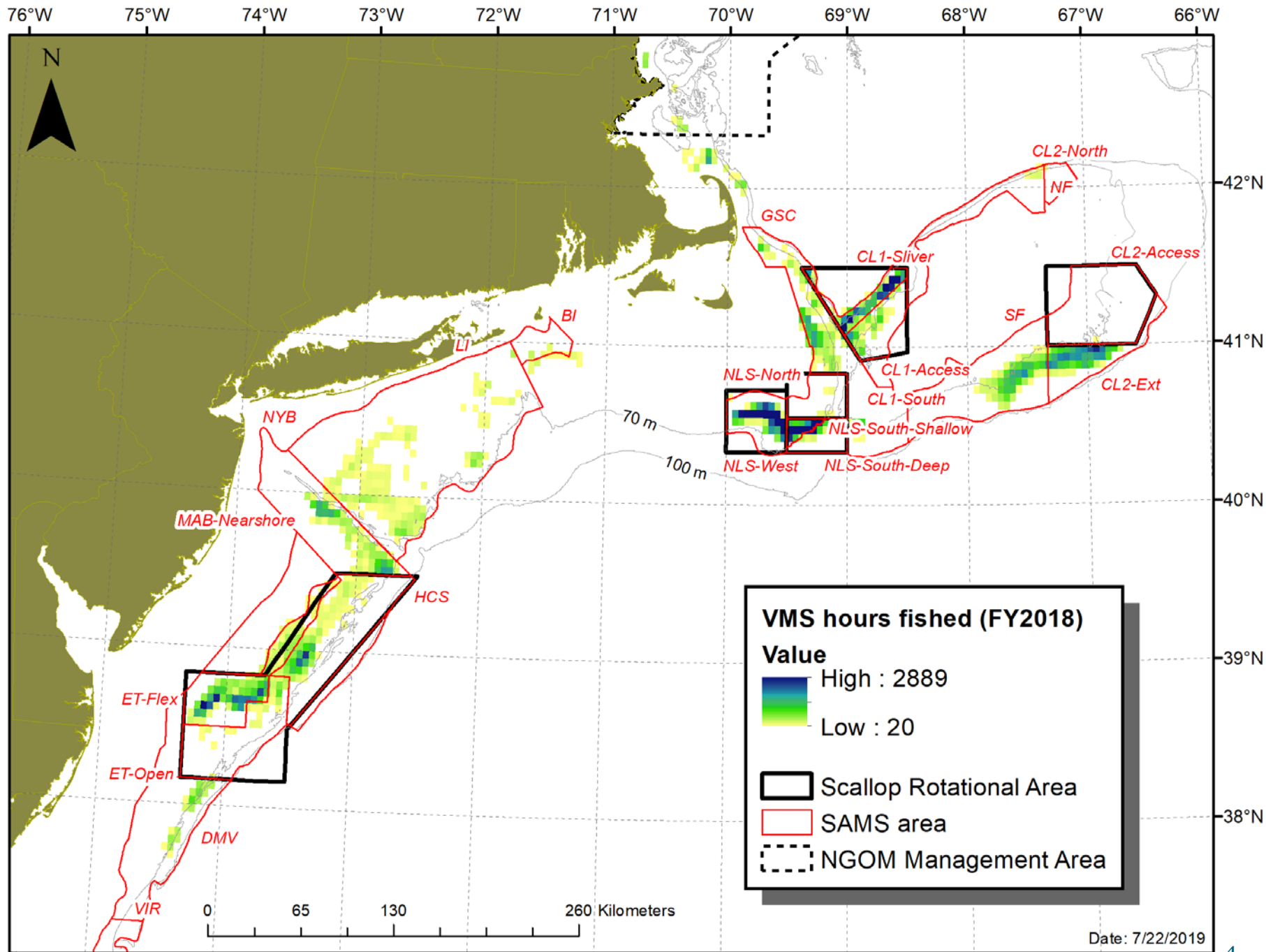
Overview

- Complete FY2018 VMS hours fished for LA and LAGC IFQ components, April 1st, 2018 through March 31st, 2019, by region and SAMS area.
- VMS effort outside of SAMS area boundaries was < 2% of grand total
 - Focused primarily north/east of P-Town, the NGOM, and along southern border of BI SAMS.
 - *These tables do not include VMS hours from outside of SAMS areas.*

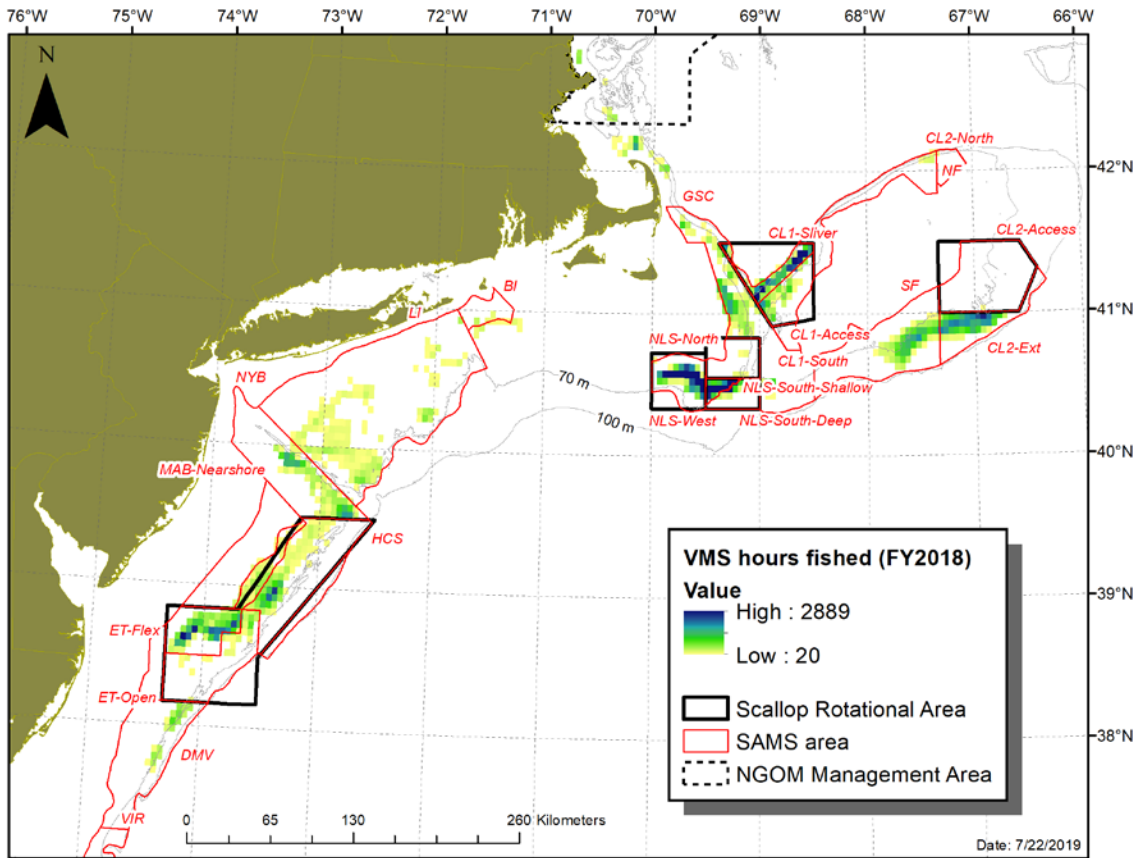
Data used

Source: B. Galuardi (GARFO)

- Data is combined scallop fishery (LA and LAGC) VMS pings from April 2018 – March 2019.
- Sum of polls x time (30 min/poll) = total hours
- Maps aggregated at 3 nm squares. Minimum 20 hours in each square.
- 2-5 kt speed filter applied.
- All data within state waters were masked.
- VMS hours were summed by SAMS area using 'Zonal statistics' tool (ArcMap 10.5).



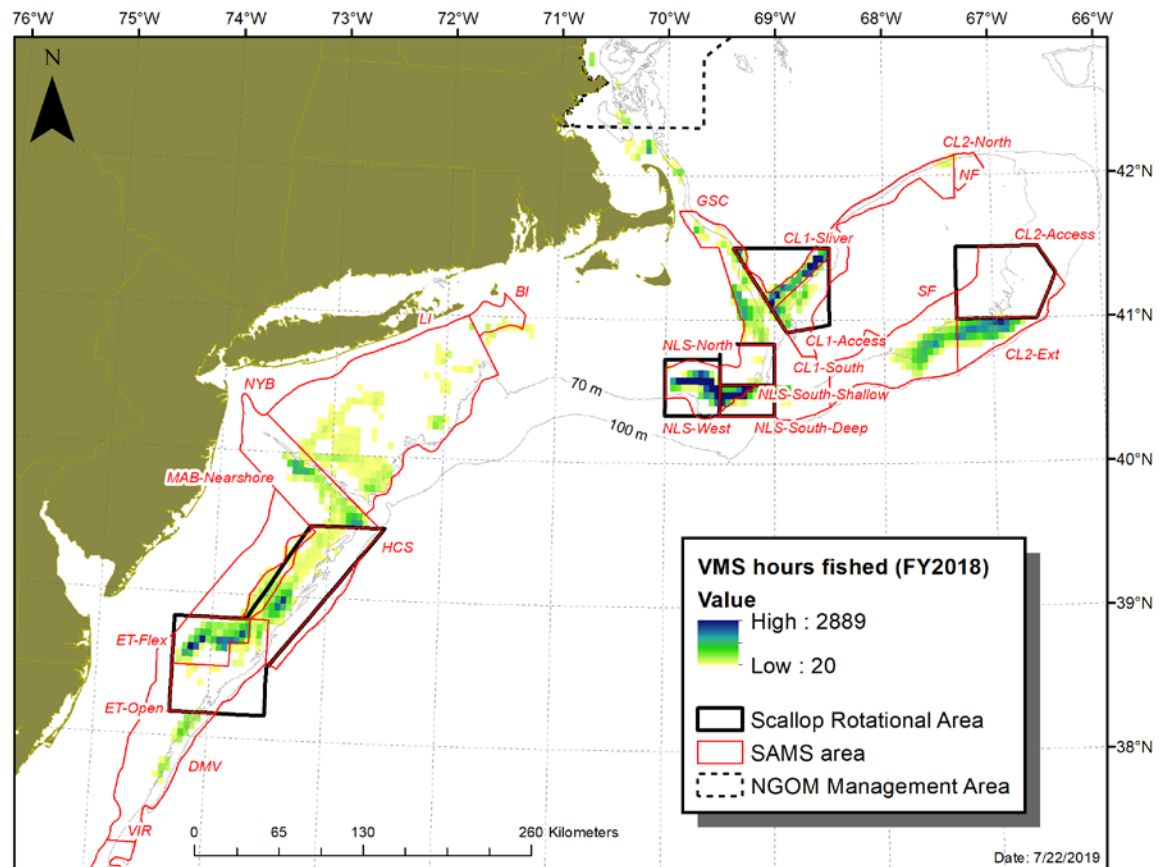
Total hours by SAMS



Region/SAMS area	hours	% of total
GB		
NLS-West	28,212	15.7%
CL1-Silver	19,472	10.8%
CL2-Ext	18,807	10.4%
GSC	15,473	8.6%
SF	13,906	7.7%
NLS-South-Shallow	12,662	7.0%
NLS-South-Deep	5,401	3.0%
CL1-Access	4,459	2.5%
NF	272	0.2%
NLS-North	251	0.1%
CL2-Access	22	0.0%
MA		
ET-Flex	19,040	10.6%
NYB	14,866	8.3%
HCS	10,508	5.8%
LI	9,555	5.3%
ET-Open	3,313	1.8%
DMV	3,096	1.7%
MAB-Nearshore	479	0.3%
BI	275	0.2%
Grand Total	180,069	100.0%

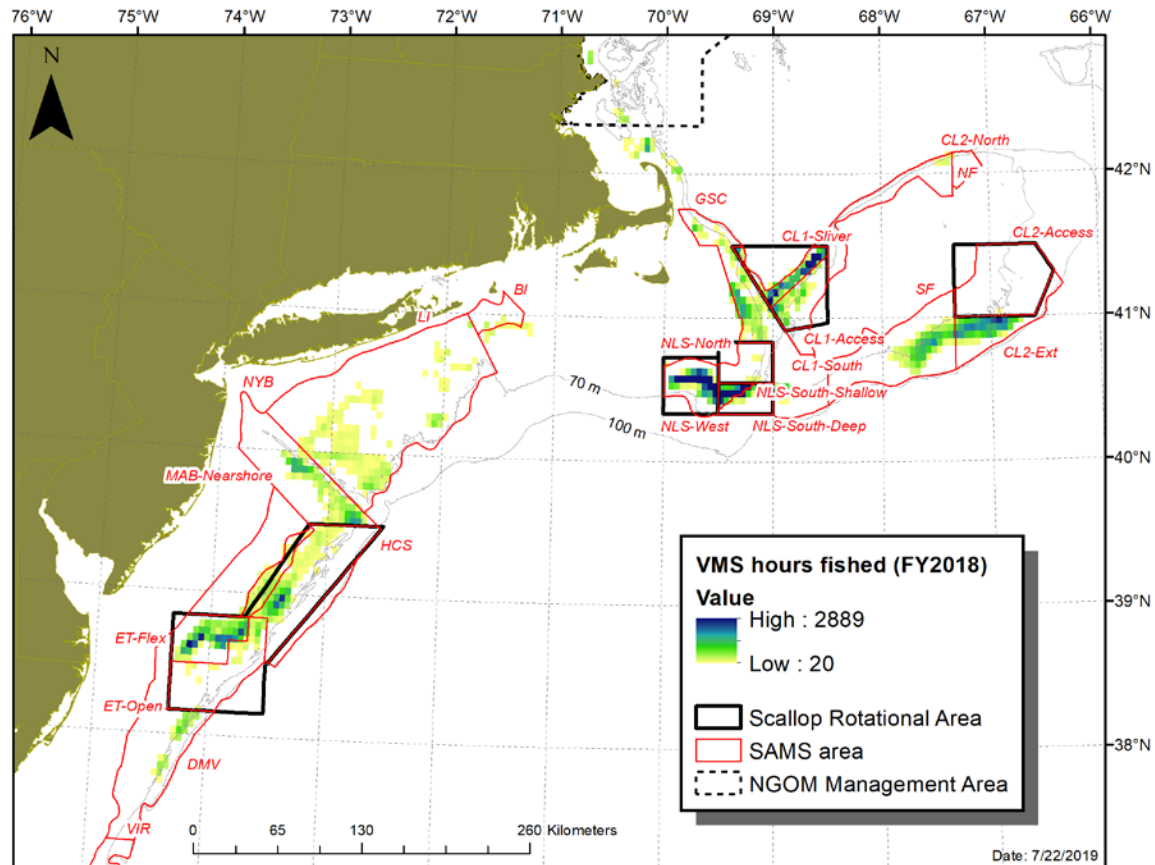
Open area effort

Region/SAMS area	hours	% of total
GB		
CL2-Ext	18,807	24.5%
GSC	15,473	20.2%
NF	272	0.4%
SF	13,906	18.1%
MA		
BI	275	0.4%
DMV	3,096	4.0%
LI	9,555	12.5%
MAB-Nearshore	479	0.6%
NYB	14,866	19.4%
Grand Total	76,729	100.0%



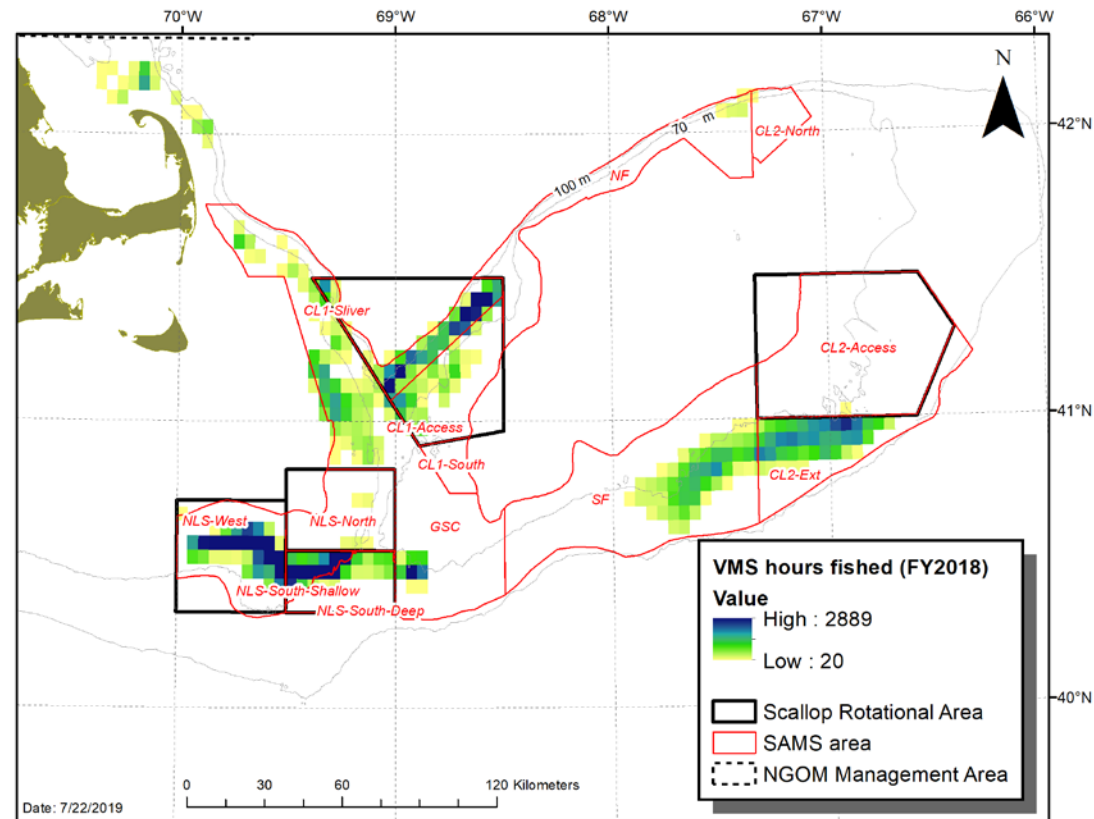
Access area effort

Region/SAMS area	hours	% of total
GB		
CL1-Access	4,459	4.3%
CL1-Sliver	19,472	18.8%
CL2-Access	22	0.0%
NLS-North	251	0.2%
NLS-South-Deep	5,401	5.2%
NLS-South-Shallow	12,662	12.3%
NLS-West	28,212	27.3%
MA		
ET-Flex	19,040	18.4%
ET-Open	3,313	3.2%
HCS	10,508	10.2%
Grand Total	103,340	100.0%



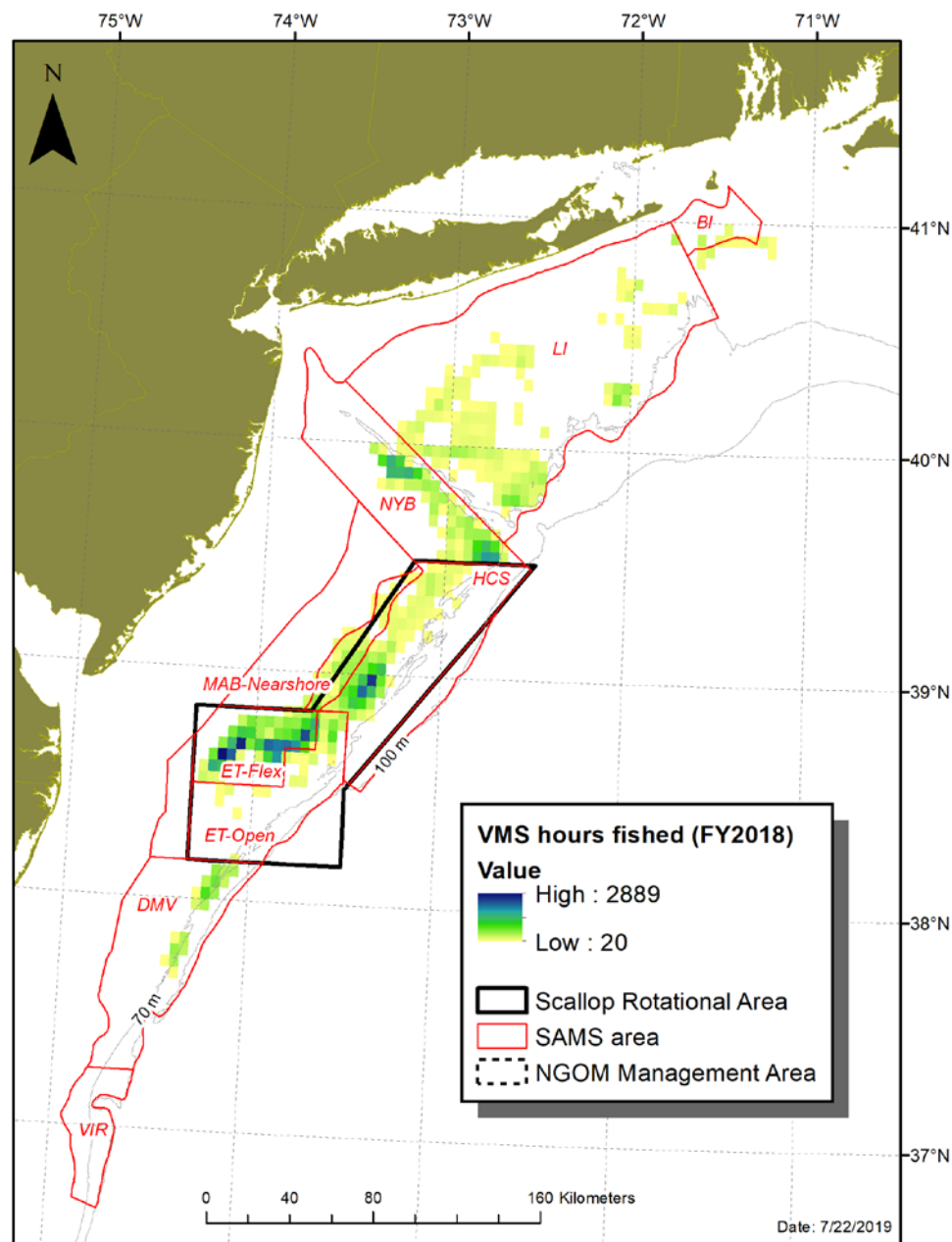
Georges Bank effort

Region/SAMS area	hours	% of total
GB		
NLS-West	28,212	23.7%
CL1-Sliver	19,472	16.4%
CL2-Ext	18,807	15.8%
GSC	15,473	13.0%
SF	13,906	11.7%
NLS-South-Shallow	12,662	10.6%
NLS-South-Deep	5,401	4.5%
CL1-Access	4,459	3.7%
NF	272	0.2%
NLS-North	251	0.2%
CL2-Access	22	0.0%
Grand Total	118,936	100.0%



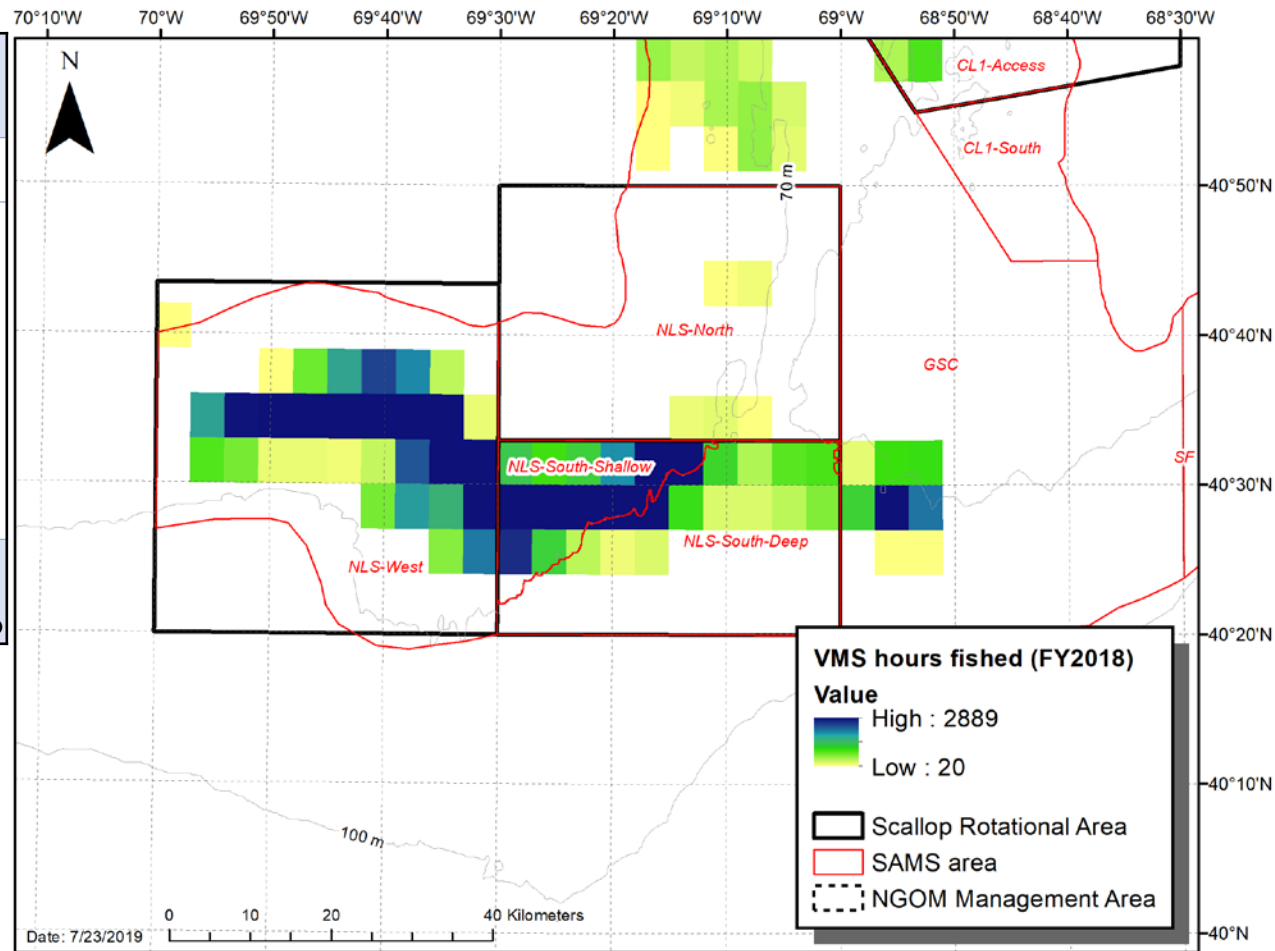
Mid-Atlantic effort

Region/SAMS area	hours	% of total
MA		
ET-Flex	19,040	31.1%
NYB	14,866	24.3%
HCS	10,508	17.2%
LI	9,555	15.6%
ET-Open	3,313	5.4%
DMV	3,096	5.1%
MAB-Nearshore	479	0.8%
BI	275	0.5%
Grand Total	61,133	100.0%



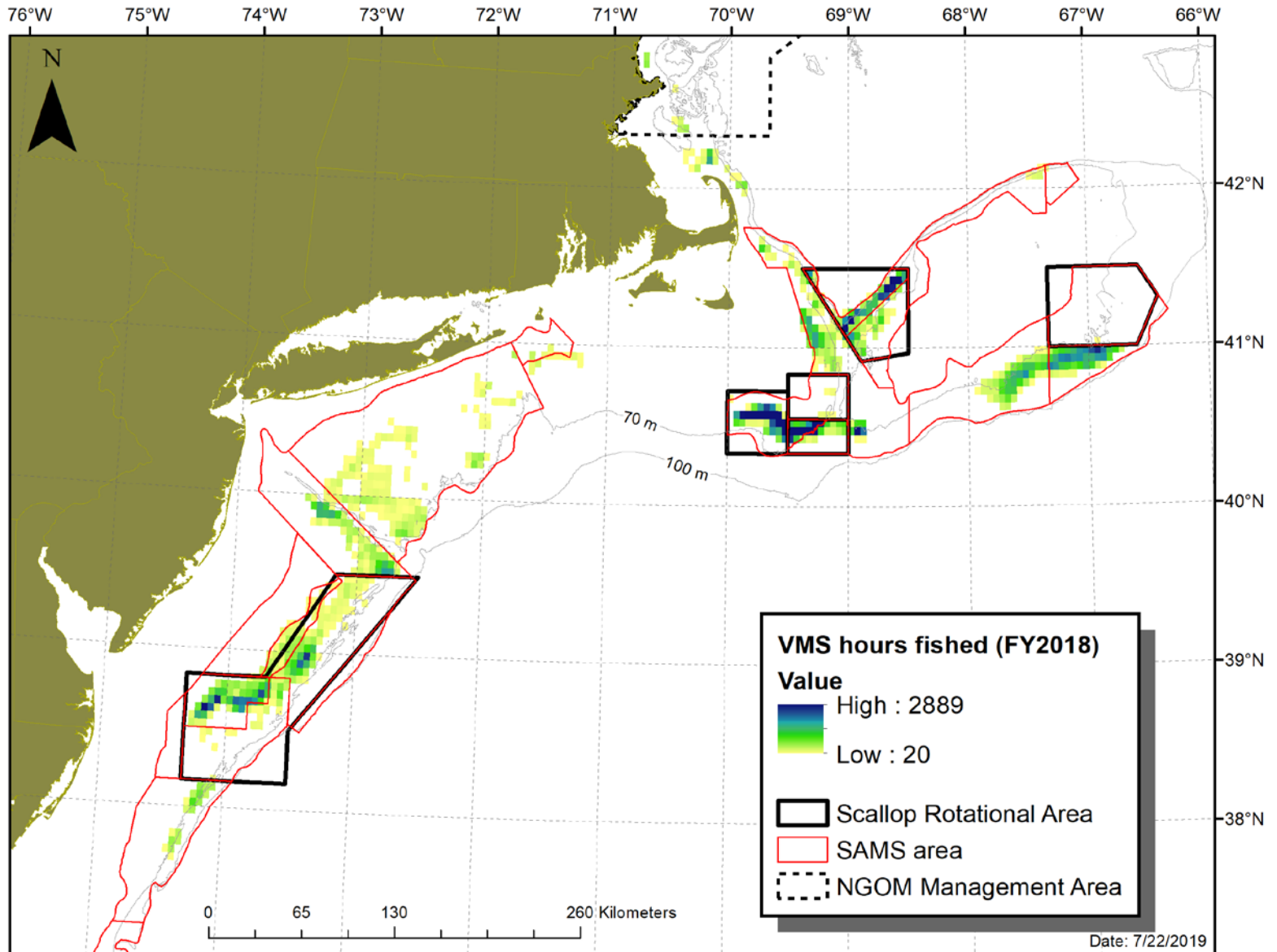
Nantucket Lightship

Region/SAMS area	hours	% of total
GB		
NLS-West	28,212	60.6%
NLS-South-Shallow	12,662	27.2%
NLS-South-Deep	5,401	11.6%
NLS-North	251	0.5%
Grand Total	46,526	100.0%

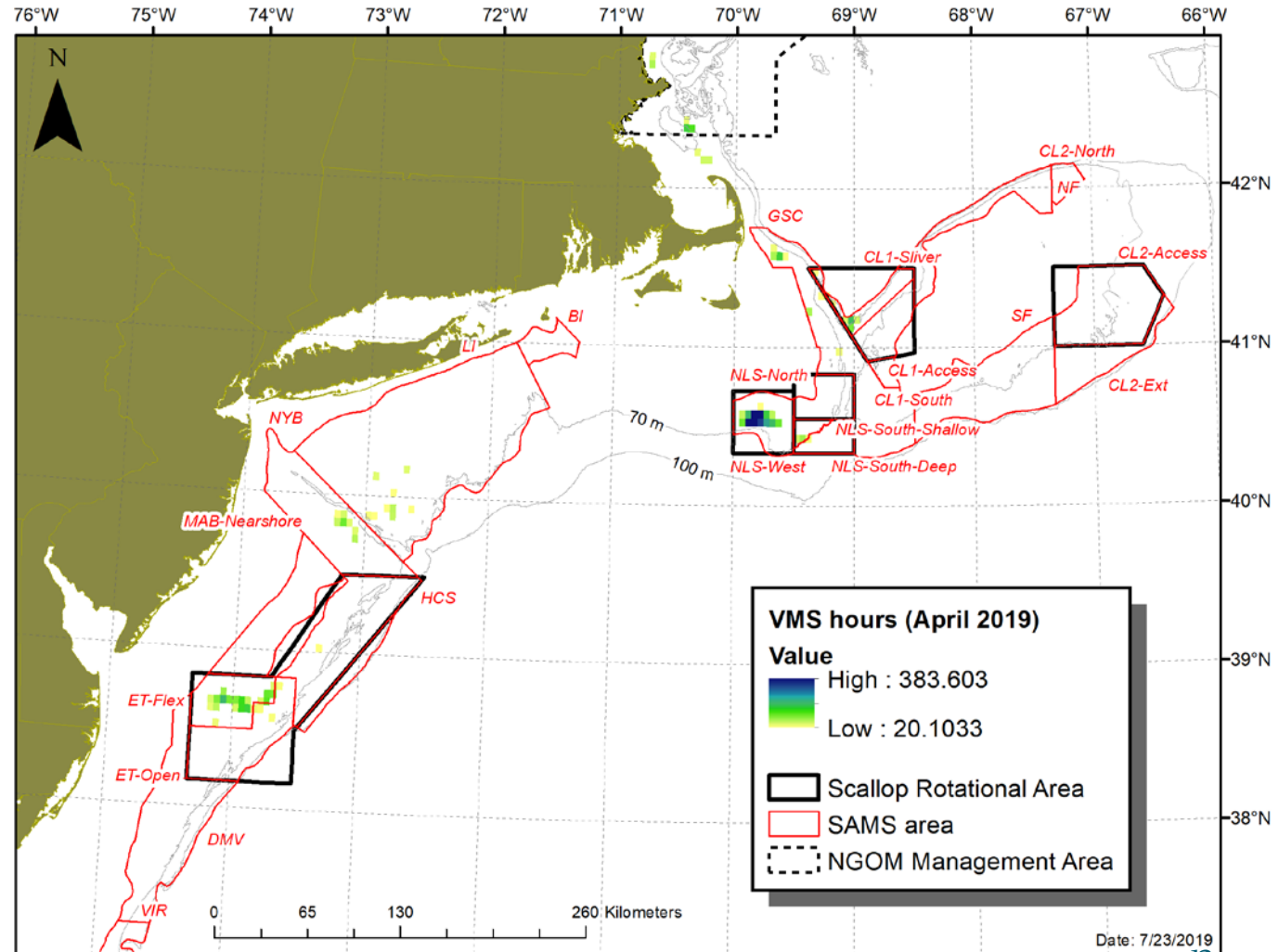


Other slides

FY2018 total for reference (no labels)



April 2019



May 2019 (through May 20th)

