

Groundfish Plan Development Team Report:

Georges Bank yellowtail flounder stock Acceptable Biological Catches for fishing years 2019 and 2020

Jamie M. Cournane, PhD

NEFMC Staff

Scientific and Statistical Committee
Meeting
August 15, 2018



SSC Recommendations in 2017

1. ABC for the Georges Bank yellowtail flounder stock should not exceed 300 mt for FY2018 and FY2019, with the expectation that the FY2019 catch specifications will be revisited and possibly adjusted following the 2018 TRAC assessment. OFL for the stock remains unknown.
2. The SSC SCWG should continue its work to develop a control rule for the GB yellowtail flounder stock. The work should be extended to offer advice on the most important uncertainties to consider for simulation work. The control rule should be developed in the context of the Council's Risk Policy, and should be available for use by the SSC as a method to consider in specification setting in 2018 for FY 2019. The SSC suggests that the Council consider this as a priority in terms of supporting this effort with appropriate resources.

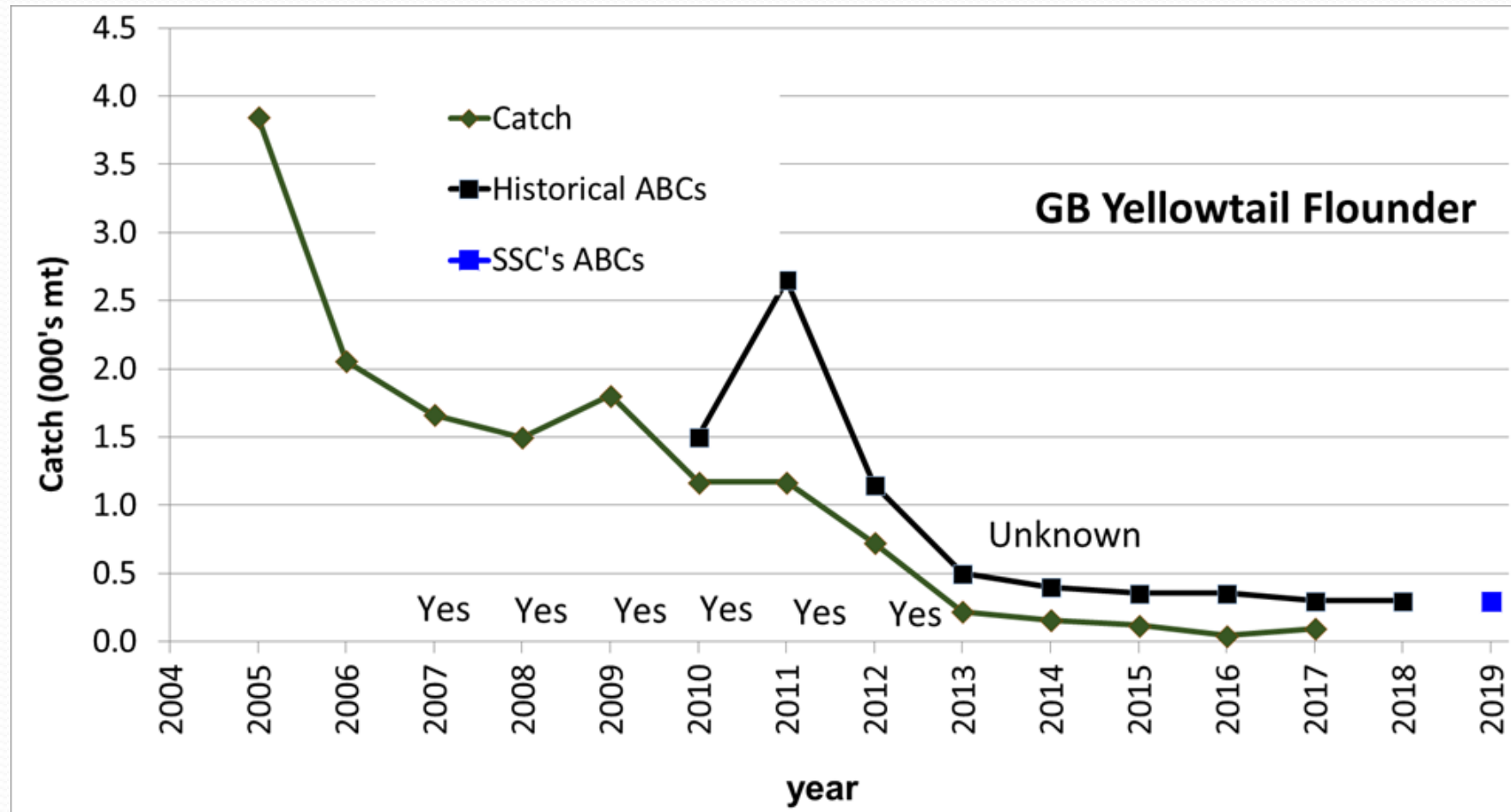
Groundfish Fishery Catch Performance

	Total Shared TAC – US & CA (mt)	US % Share	US TAC (mt)	% US TAC Caught	Groundfish sub-ACL (mt)	Groundfish catch (mt)	Percent Groundfish ACL Caught (%)
FY2011	2,650	55%	1,458	76.0%	1142.0	990.0	86.7%
FY2012	1,150	49%	564	68.0%	368.3	215.5	58.5%
FY2013	500	43%	215	43.0%	154.5	55.8	36.1%
FY2014	400	82%	328	37.0%	254.5	62.5	24.5%
FY2015	354	70%	248	27.5%	202.9	38.4	18.9%
FY2016	354	76%	269	12.3%	250.8	23.9	9.5%
FY2017*	300	69%	207	44.4%	162.6	31.4	19.3%
FY2018**	300	71%	213		169.4	26.0	15.3%
FY2019		76%					

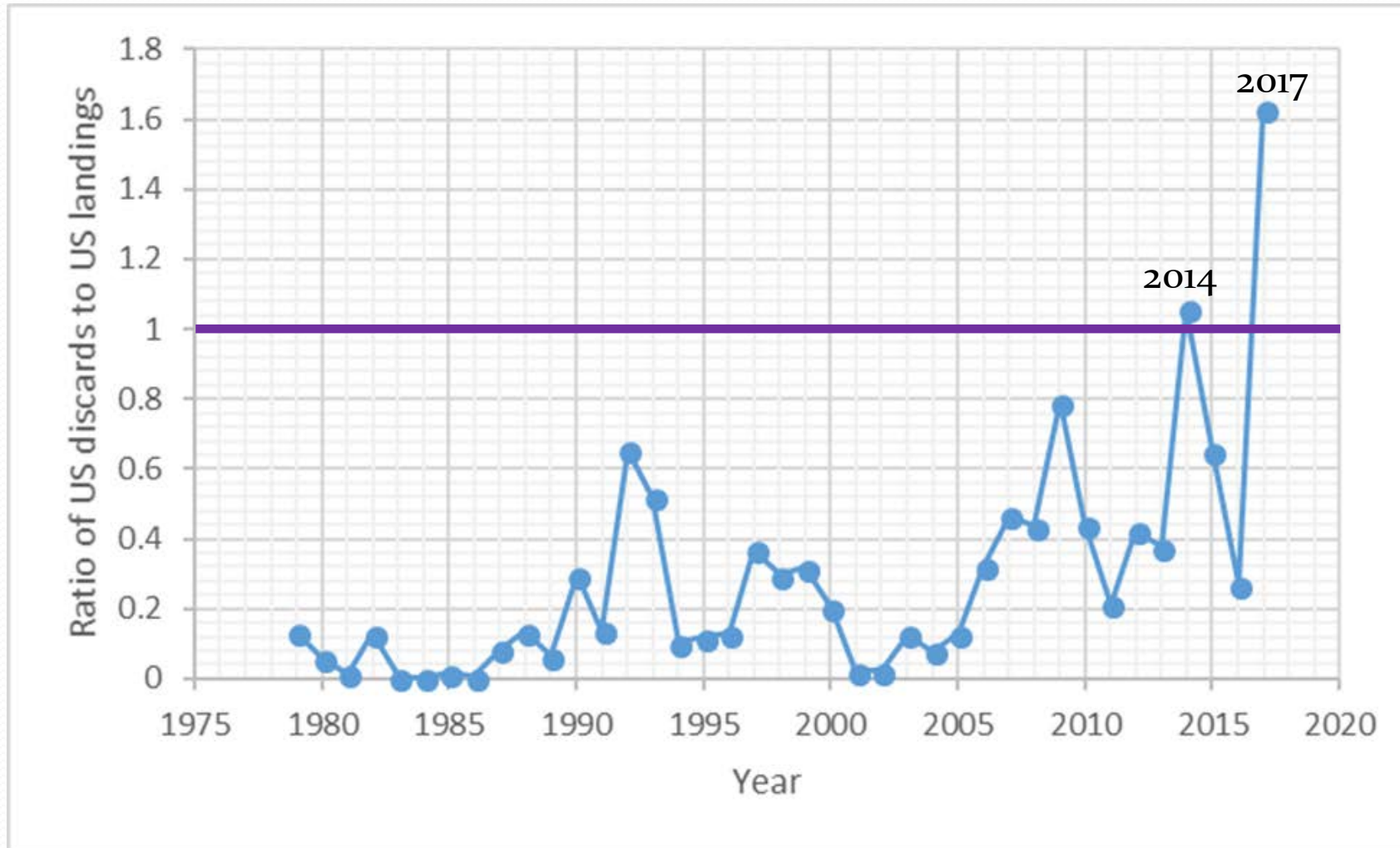
*Indicates preliminary year-end catch data.

**Preliminary in-season catch estimate as of August 3, 2018, GARFO catch reports.

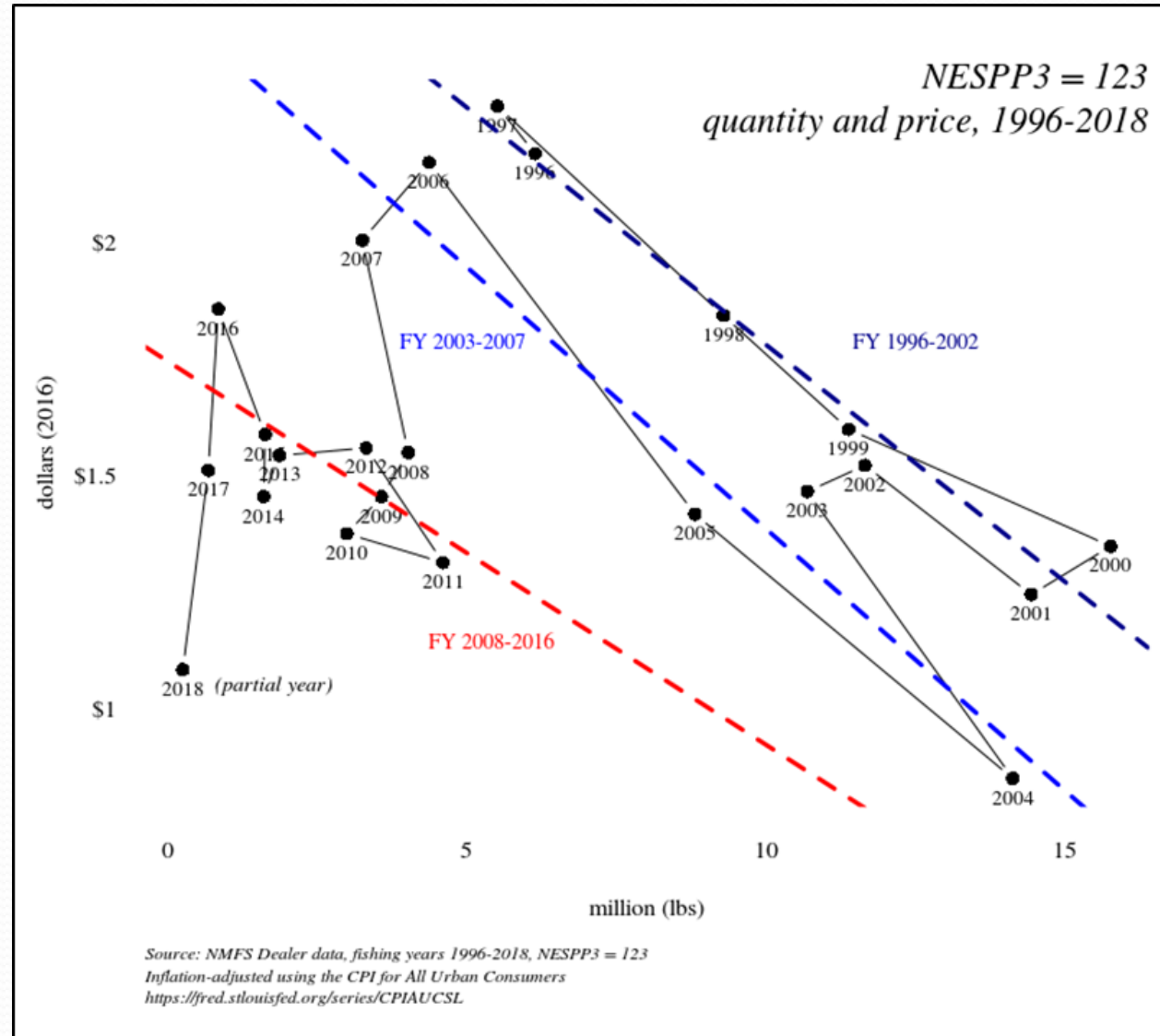
Total Bank (US/CA) Catch Performance



Ratio of US Landings to US Discards



Demand Function for Yellowtail Founder



PDT Recommendation

- The PDT recommends a decrease in the GB yellowtail flounder quota from the 2018 quota of 300 mt. The PDT remains concerned about the continued declines in survey biomass estimates, low stock productivity, and poor state of the stock.
- Applying the empirical approach, the TRAC recommended an upper bound of 6% on the exploitation rate for catch advice, resulting in 68mt for 2019. The PDT concurs with TRAC that quotas should be reduced from 2018 quota of 300 mt
- As an alternative approach to the TRAC recommendation, the PDT recommends setting the ABC for FY2019 (and FY2020) at the recent three-year (2015-2017) average catch $([118+44+95]/3)$, 86mt.

Additional Information to Evaluate Risk

- **Biological/Ecological** – natural mortality
- **Economic** – scallop fishery effort
- **Social**- fishing communities such as New Bedford and Gloucester

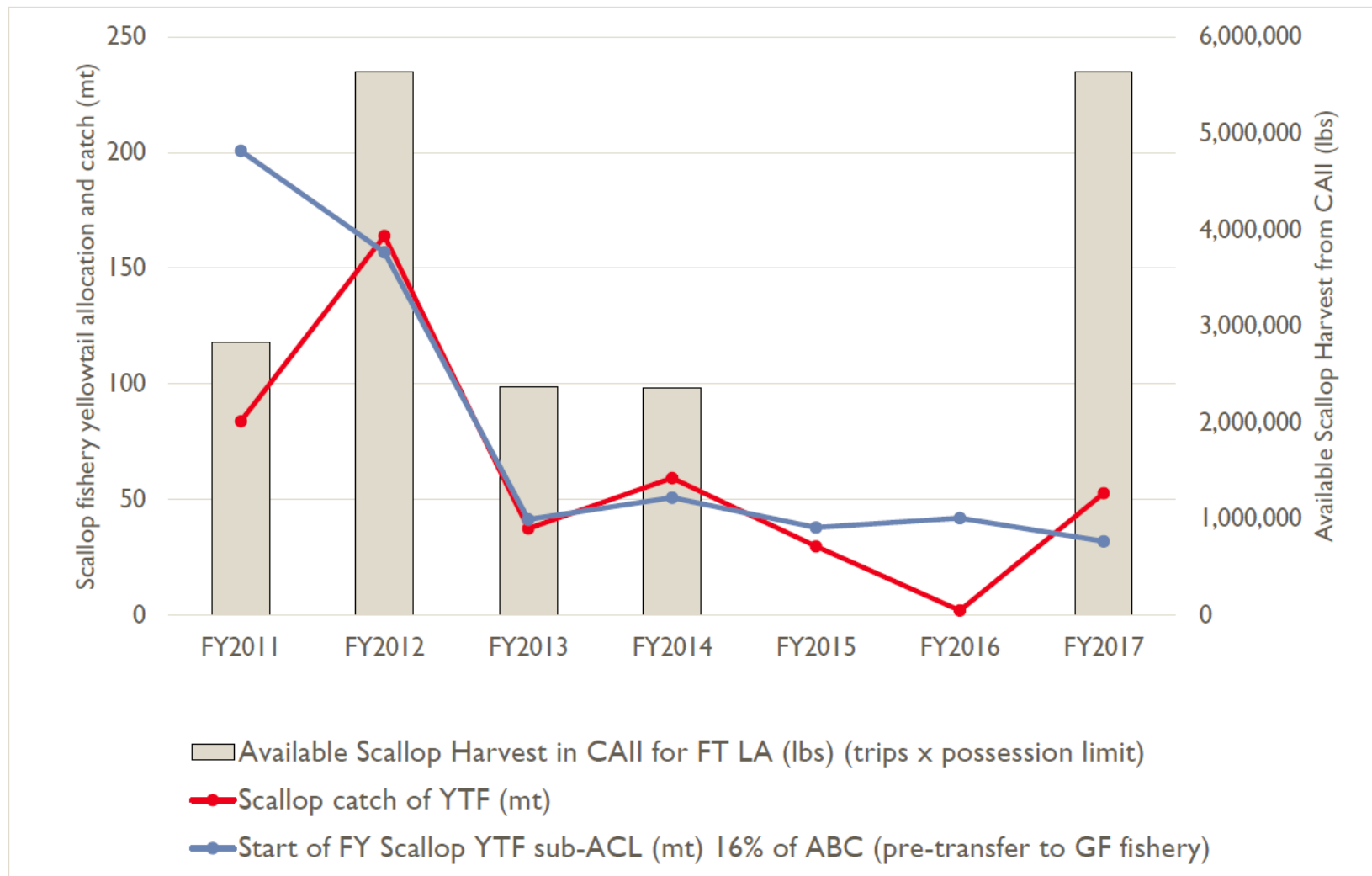
Scallop Plan Development Team Memo

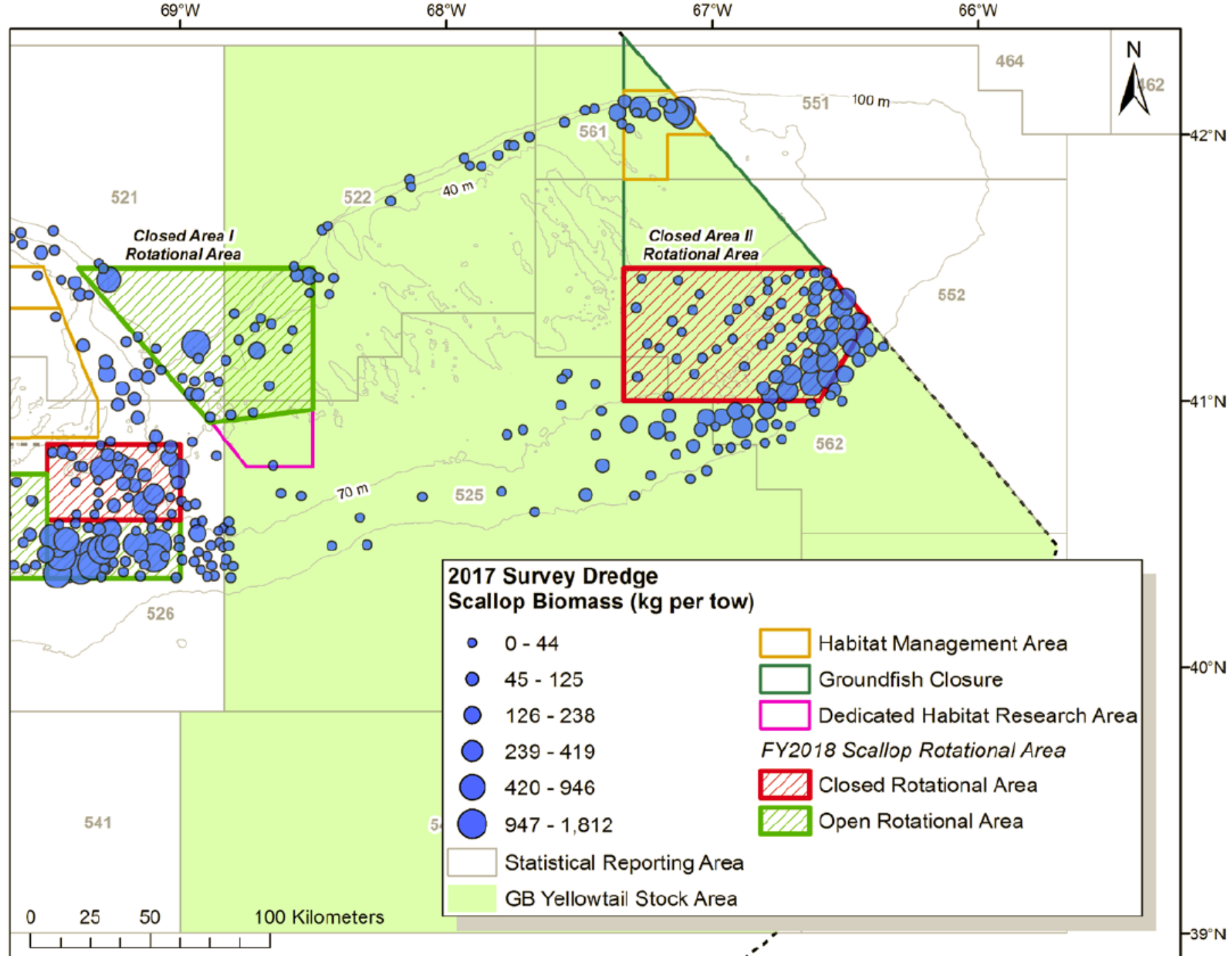
Tables and Figures

Scallop Fishery Catch Performance

FY	Total Shared TAC	US % Share	US TAC (mt)	% US TAC Caught	Scallop sub-ACL	Scallop catch	% Scallop ACL Caught
FY2010	1,500	64%	1,200	68%	146	17.6	12.1%
FY2011	2,650	55%	1,458	76%	200.8	83.9	41.8%
FY2012	1,150	49%	564	68%	156.9	164.0	104.5%
FY2013	500	43%	215	43%	41.5	37.5	90.4%
FY2014*	400	82%	328	37%	50.9	59.0	115.9%
FY2015*	354	70%	248	28%	38	29.7	78.1%
FY2016*	354	76%	269	12%	42	2.1	5.0%
FY2017*	300	69%	207	44%	32	52.6	164.3%
FY2018*	300	71%	213	n/a	33	n/a	n/a
* retention of GB yellowtail prohibited for scallop fishery							

Scallop Fishery and Closed Area II



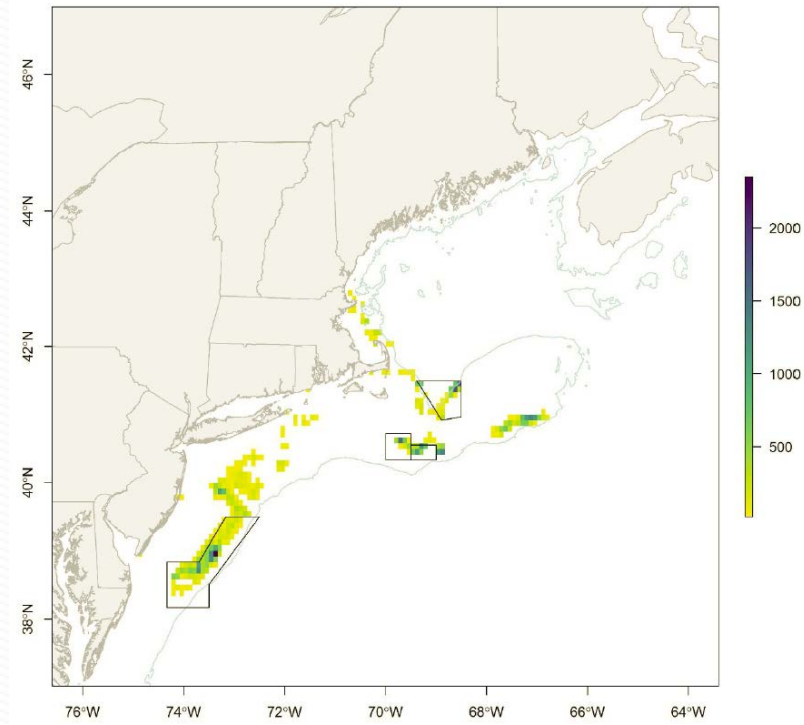


Scallop Fishery Monthly Catches

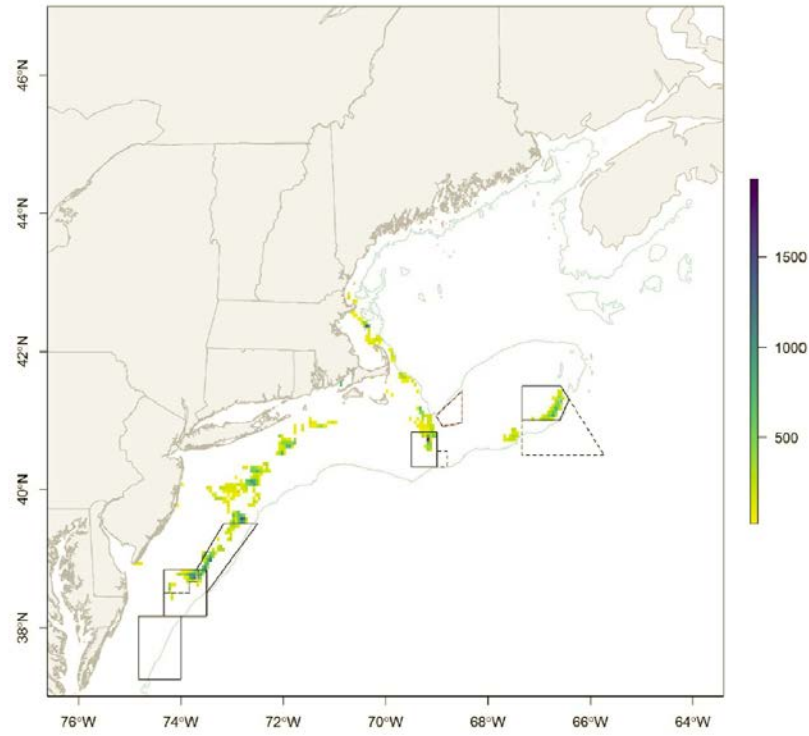
Date	Limited Access Fleet*		LAGC IFQ Fleet	Monthly total catch (lb)	Cumulative catch (lb)	Percent of sub-ACL (70,584 lb)
	Open Areas	Closed Area II				
17-Mar	68	-	2	69	69	0.1
17-Apr		2,251		2,251	2,320	3.3
17-May		15,196		15,196	17,517	24.8
17-Jun		35,740		35,740	53,257	75.5
17-Jul	159	31,382		31,541	84,798	120.2
17-Aug	888	13,590		14,477	99,275	140.7
17-Sep	356	-		356	99,630	141.2
17-Oct	182	-		182	99,813	141.5
17-Nov		2,045		2,045	101,858	144.4
17-Dec		9,834		9,834	111,692	158.3
18-Jan		2,349		2,349	114,042	161.7
18-Feb		1,864		1,864	115,906	164.3
18-Mar			-	0	115,906	164.3
Total	1,652	114,252	2	115,906		

FY	Action	LA DAS (Full Time)	FT LA AA trips	CA II AA	Notes re: CA II AA and other management
2011	FW22	32	4 (2 MA)	0.5 trips (157 vessels; 18K lbs/trip)	10% access area bycatch cap; GB stock- wide monitoring of YT sub- ACL; Bycatch Avoidance Program CAI and CAII
2012	FW22	34	4	1 trip (313 vessels; 18K lbs/trip)	GB stock-wide monitoring of YT sub- ACL; Bycatch Avoidance Program CAI and CAII
2013	FW24	33	2	182 trips (13K lbs/trip)	Seasonal closure of CAII Aug 15 – Nov 15; GB stock-wide monitoring of YT sub-ACL; Bycatch Avoidance Program CAII
2014	FW25	31	2	197 trips (12K lbs/trip)	16% GB YT sub-ACL; YT landings prohibited; Seasonal closure of CAII Aug 15 – Nov 15; GB stock-wide monitoring of YT sub-ACL; Bycatch Avoidance Program CAII
2015	FW26	30.86	51K lbs to MAAA	Closed	In-season transfer to groundfish fishery (7.9 mt).
2016	FW27	34.55	3 (51K lbs to MAAA)	Closed	‘CAII Extension’ closure of open areas to protect small scallops; In- season transfer to groundfish fishery (39.8 mt)
2017	FW28	30.41	4 (18K each)	1 trip (313 vessels; 18k lbs trip)	‘CAII Extension’ closure of open areas to protect small scallops; no RSA compensation fishing in CAII; seasonal closure of CAII Aug 15—Nov 15; Bycatch Avoidance Program CAII
2018	FW29	24.00	6 (18K each)	Closed	‘CAII extension’ reverted back to open area. Reactive AM for GB yellowtail changed from time-area closure to gear modification in CAII.

Scallop Fishery Effort 2018 (hours)



Scallop Fishery Effort 2017 (hours)



Scallop Fishery Effort 2016 (hours)

