



***Spiny Dogfish
2022
Federal Specifications
Review***

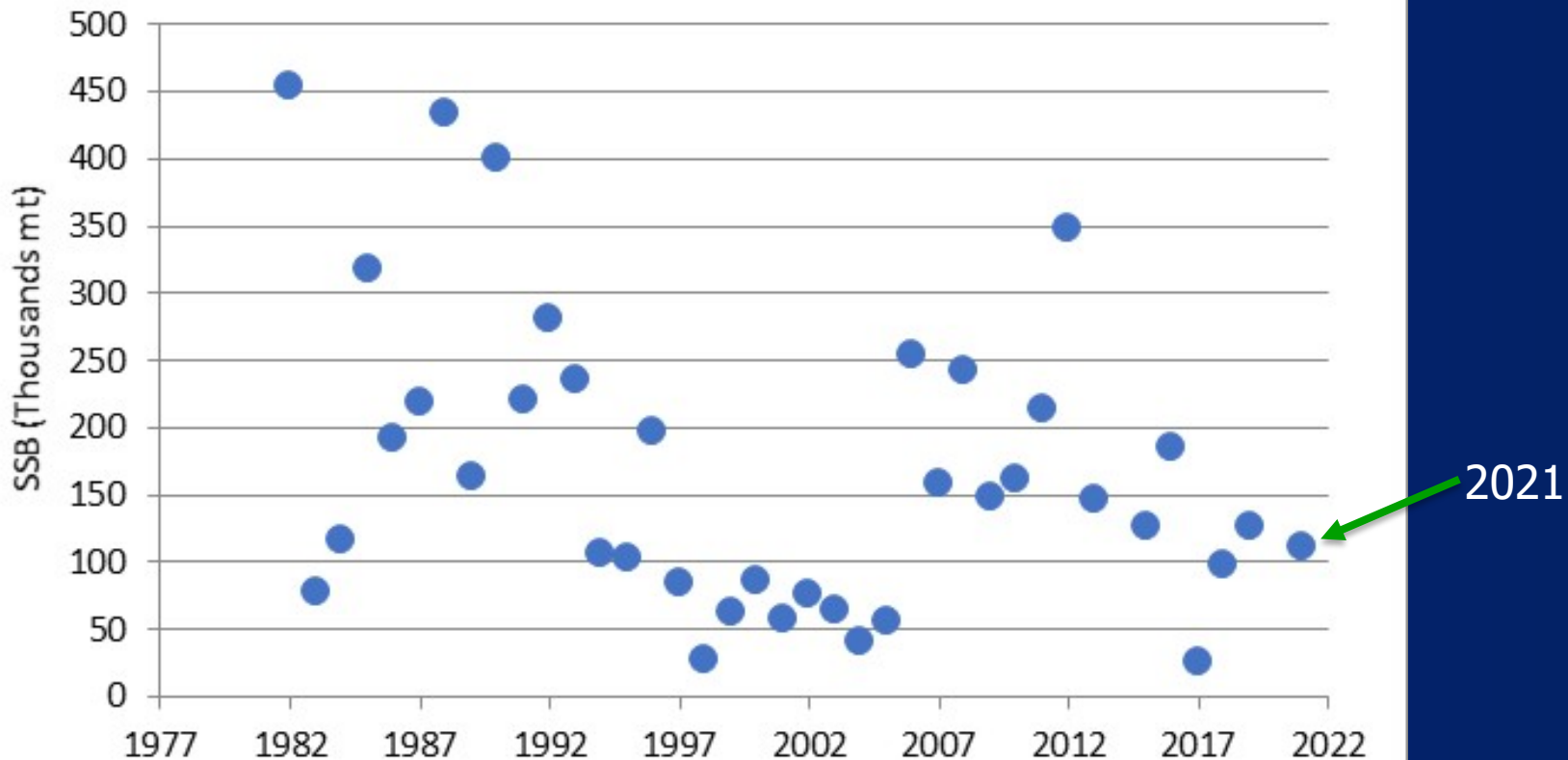
December 2021 - NEFMC

Current 2021 + planned 2022 Specs

- Acceptable Biological Catch (ABC)
 - 17,498 metric tons (mt); 38.6 million pounds
 - 13,408 mt quota; 29.6 million pounds (discards)
- P^* for 2021 = 0.333
 - Extended ABC to 2022 (May 1, 2022)
 - Research Track Assessment underway
- Open access, current federal trip limit =
6,000 pounds

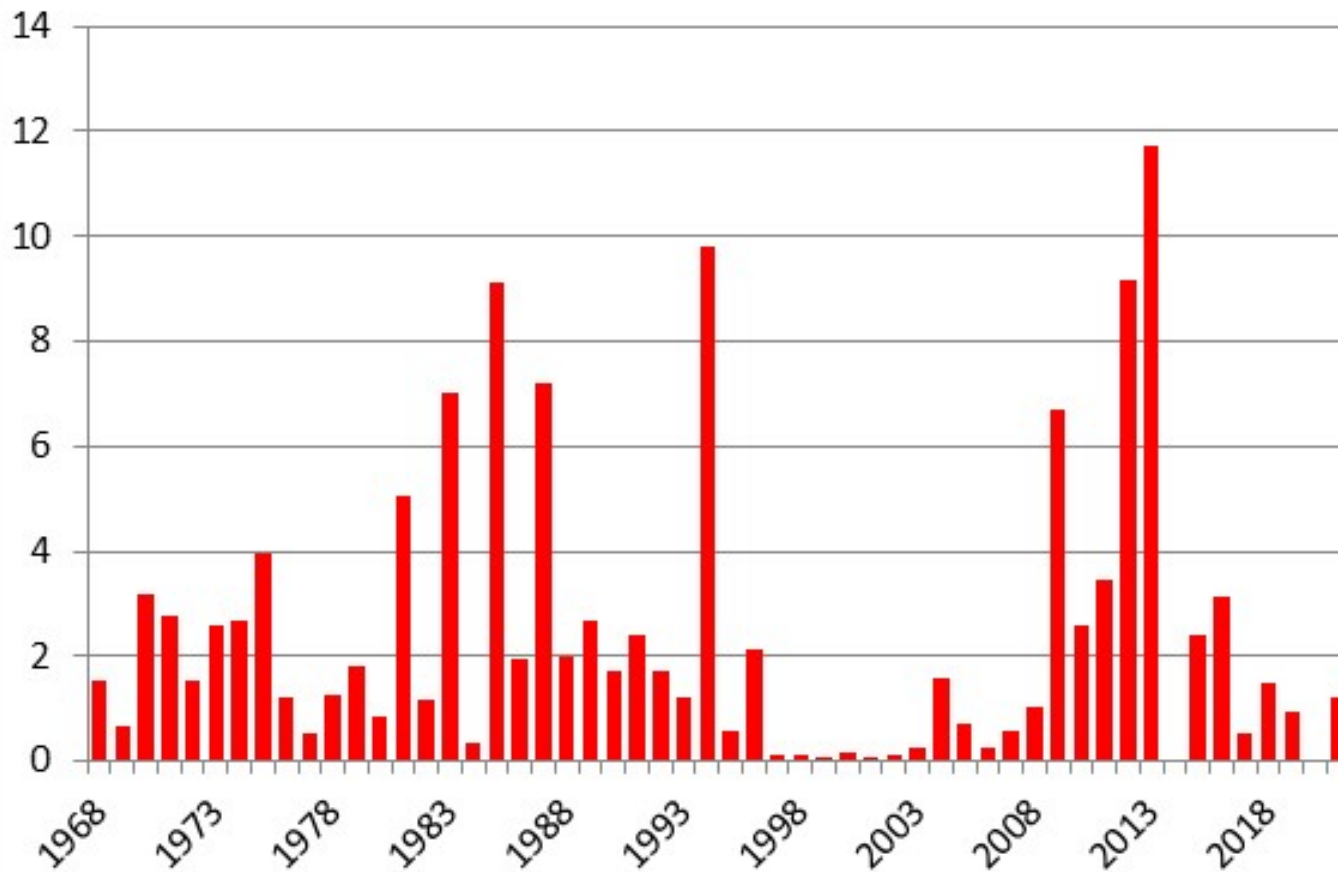
Survey Update

Female spawning stock biomass Estimates 1982-2021



Survey Update

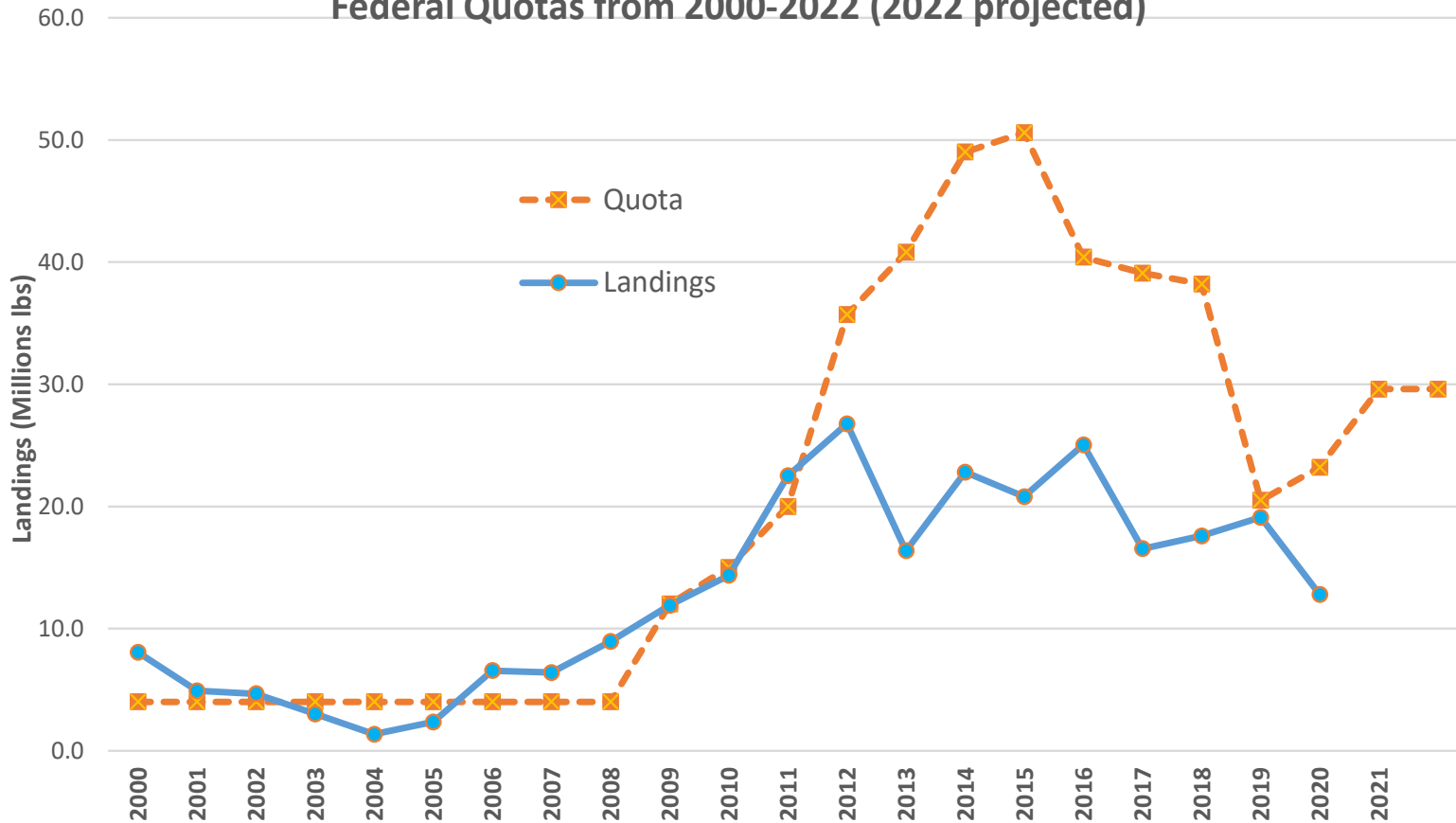
Pup Index, 1968-2021



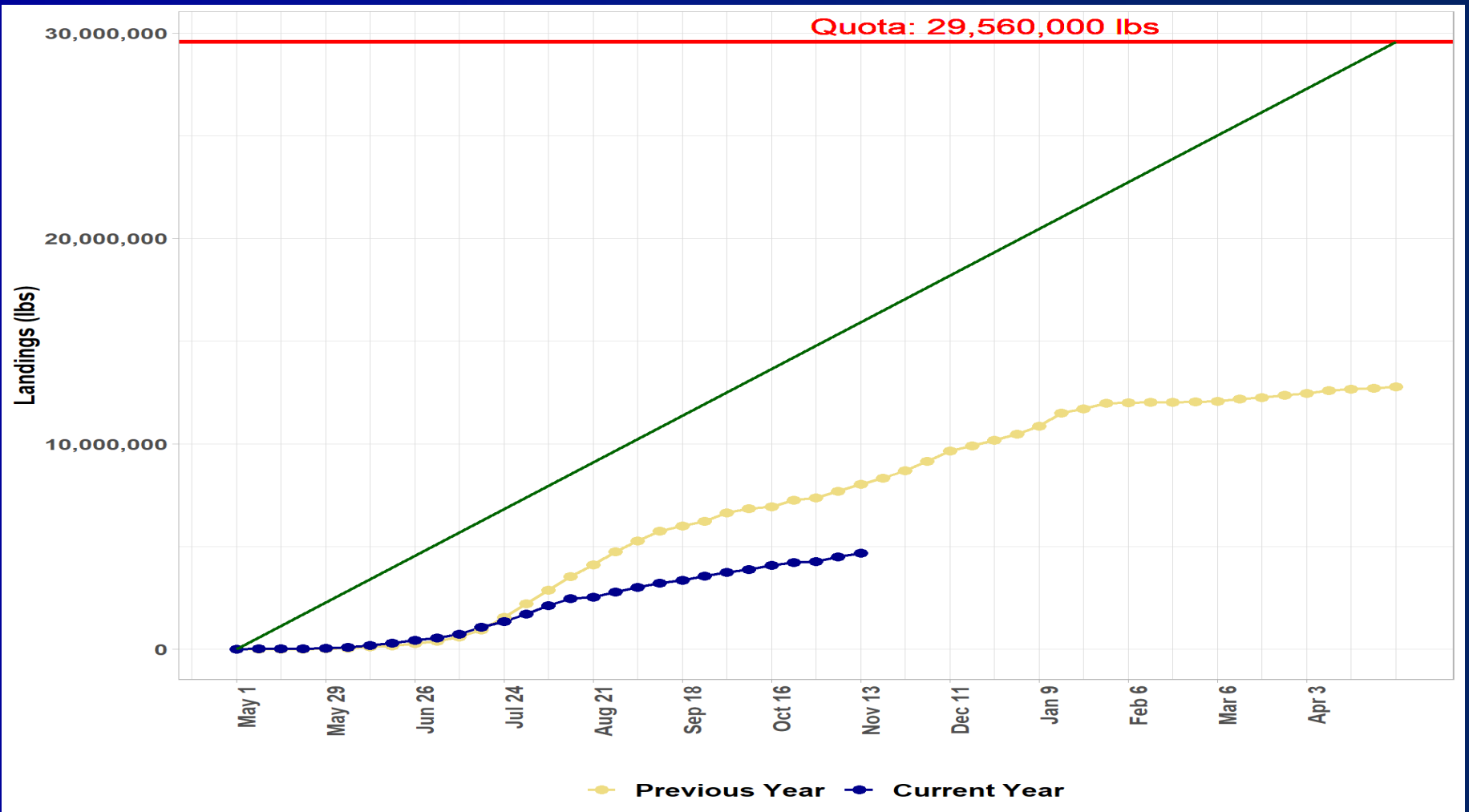
2021

Landings Since Management

Commercial Spiny Dogfish Fishing Year Landings from 2000-2020 and Federal Quotas from 2000-2022 (2022 projected)



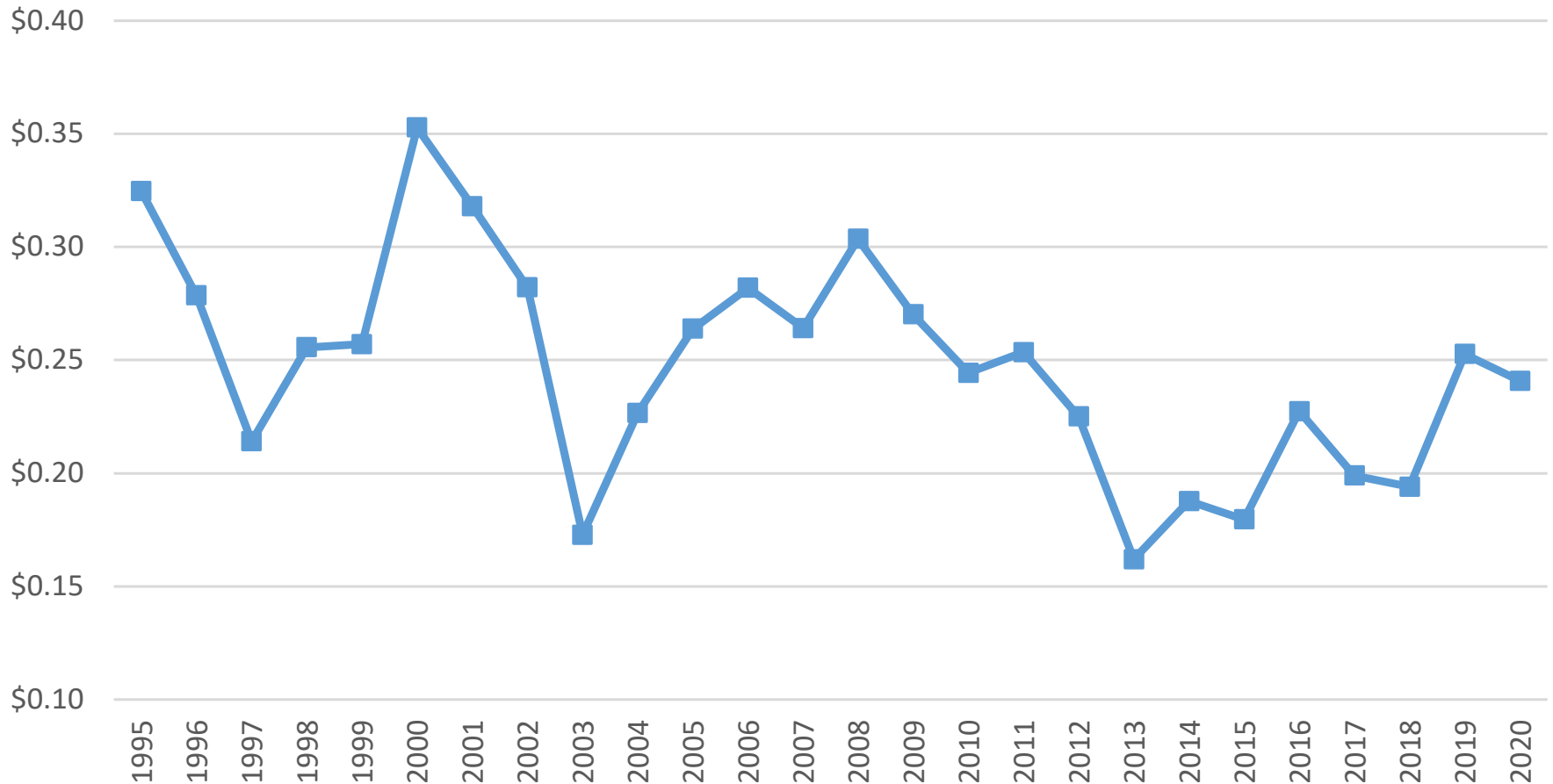
Dogfish Landings 2020 and 2021 FYs



Yellow = 2020 Fishing Year, Blue = 2021

Price up to 2020 Fishing Year

Dogfish Price, Inflation Adjusted (2020) \$/pound



Dogfish – Advisory Panel FPR

- Similar sentiments as previous years
- Markets and trip limit restrict landings
- Continued erosion of participants
 - Increased fuel costs and opportunities in other fisheries: 10,000 lb trip limit would increase landings
- 2020 VA landings particularly off
 - Other opportunities, weather
- MA off to a slow start for 2021 fishing year (summer-fall) (public)
 - Availability, skate issue, other opportunities

Dogfish – Advisory Panel FPR

■ Science Concerns

- Bigelow operations performance
- Dogfish distribution and meaning for trawl index
 - Survey area and water column usage
- Fecundity

Spiny Dogfish SSC

- Data gaps will increase uncertainty, especially 2020 Spring Survey
- 2021 Survey available
 - SSB down slightly and no evidence of a strong year class in 2021
- Research Track Assessment to be completed in 2022
 - SSC recommends collaboration with Canada on ageing methods
 - Alternative modeling approach possible
- **SSC did not recommend any changes to current quota**

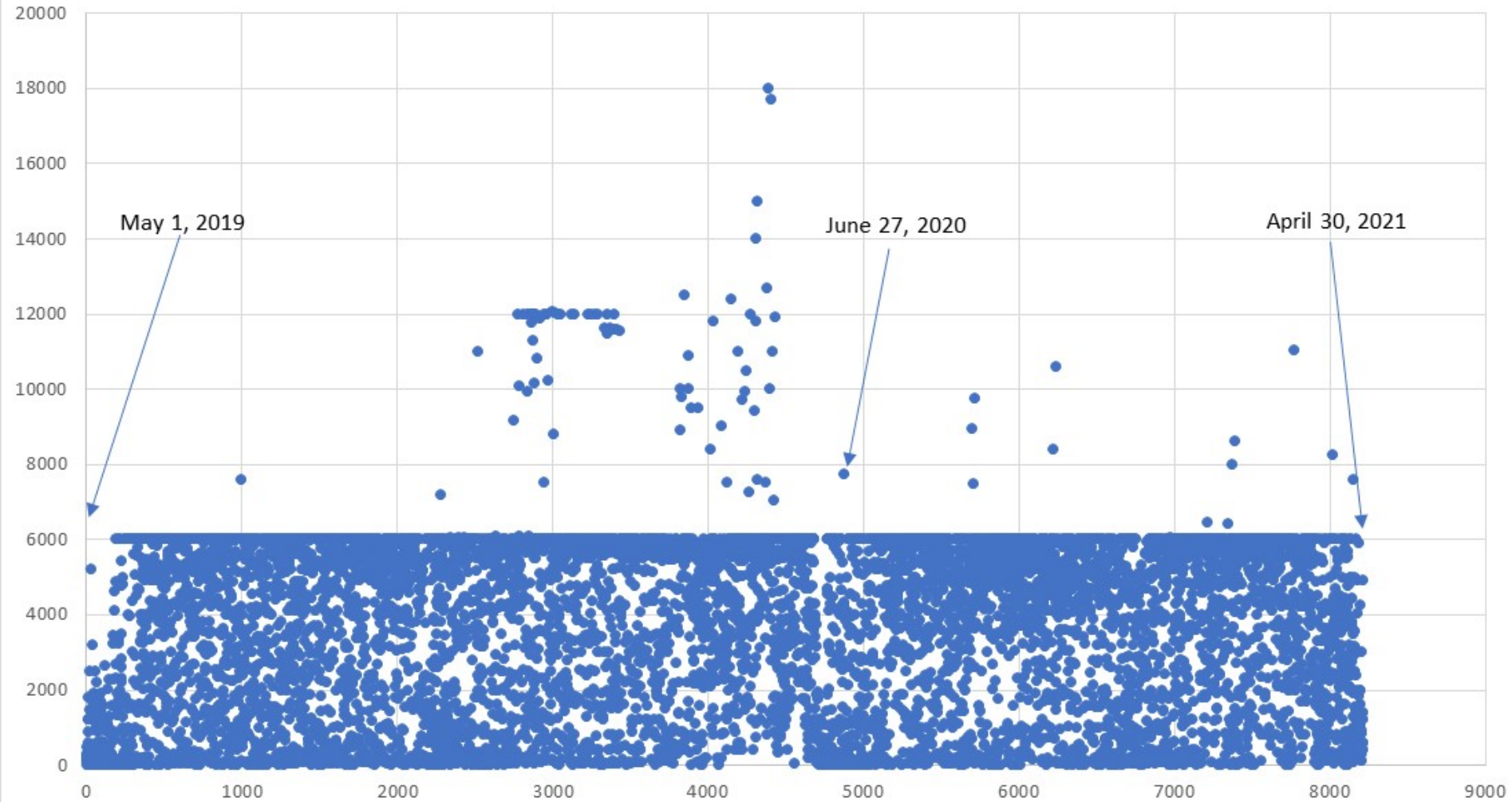
Dogfish – Trip Limit Analysis

- Considers price as indicator of disruption
- No substantial price effects apparent from two most recent changes
 - 4,000 to 5,000 (2014) and
 - 5,000 to 6,000 (2016)

Additional descriptive info... 2019 and 2020 fishing years...

Dogfish – Trip Limit Analysis

8,215 Trips with Some Federal Permit 2019-2020 Fishing Years

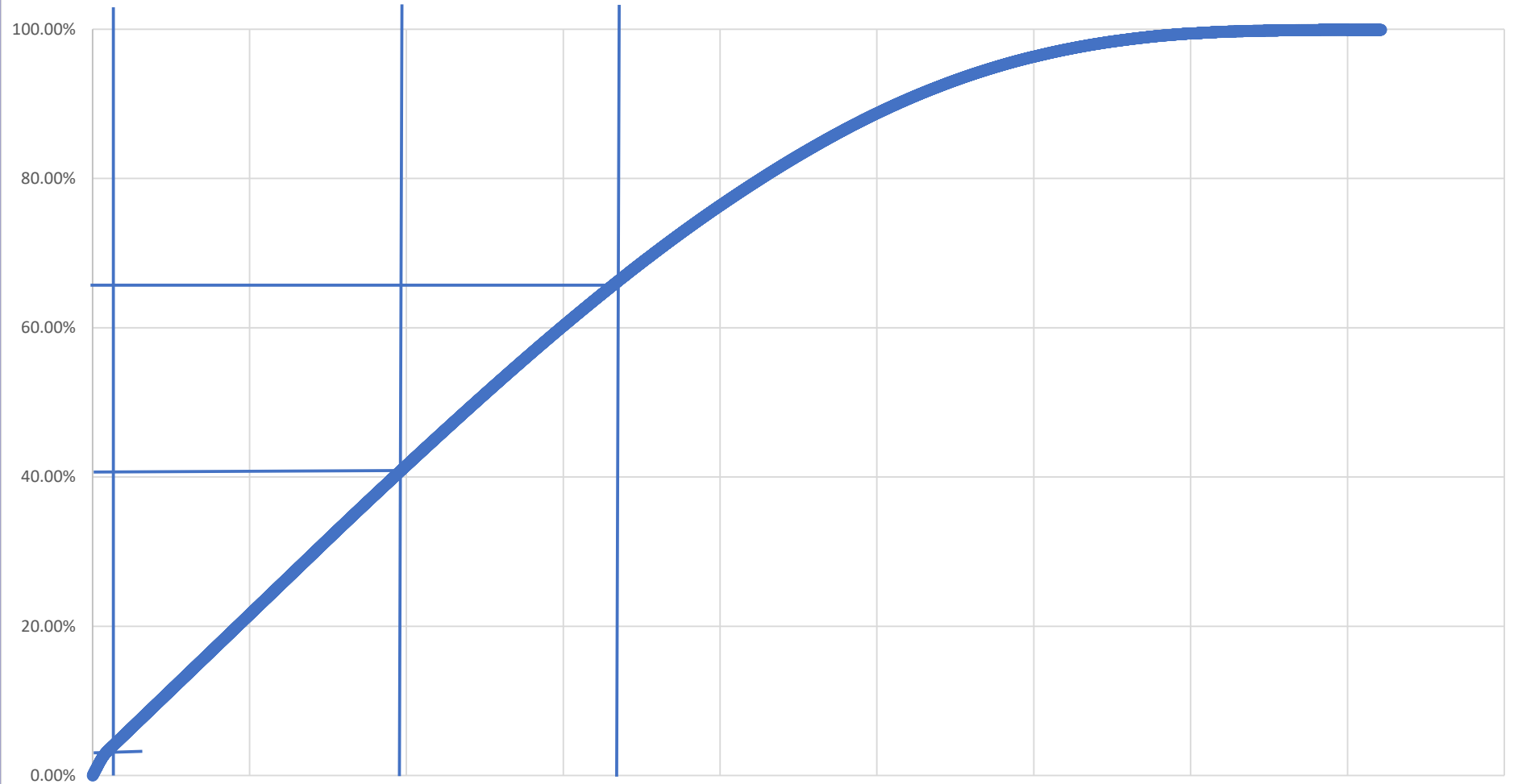


Dogfish – Trip Limit Analysis

6000+ = 4% land,
4% cumulative

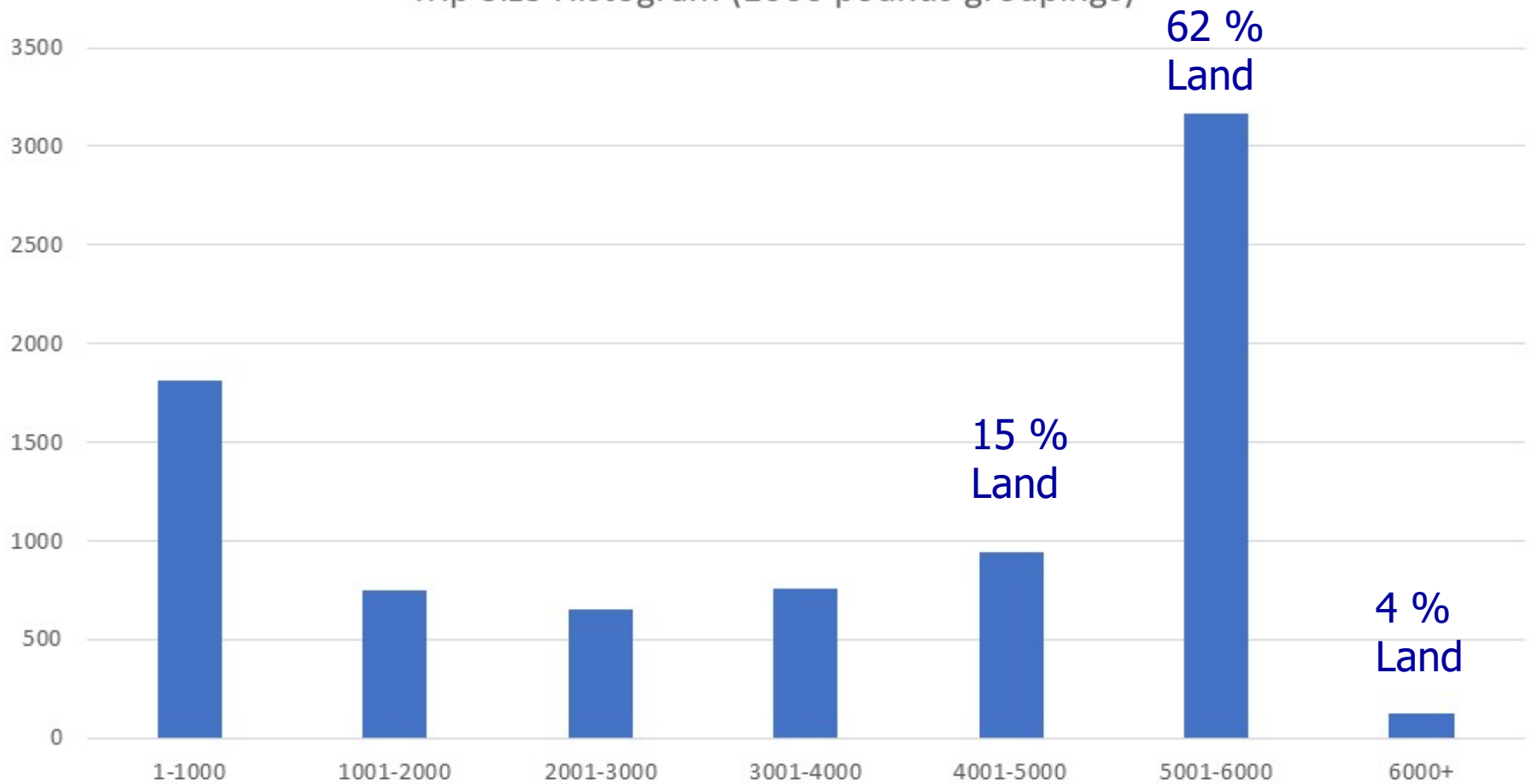
6000-5800 = 37% land,
41 % cumulative

5800-5000 = 25% land,
66% cumulative



Dogfish – Trip Limit Analysis

Trip Size Histogram (1000 pounds groupings)



Dogfish – MonCom

- Ex-Officio industry members: Double trip limit to 12,000 pounds
 - Incentivize return to the somewhat higher participation levels as seen in recent years
- MonCom concerns more process oriented...
 - as long as adhering to overall ABC/ACL, different trip limits should not negatively affect stock size
 - Size of change & impacts dictate process
 - Emergency rule seems unlikely.

Dogfish – Committee

- No changes to specifications/quotas.
- Increase federal trip limit to 7,500 pounds (25% increase)
- Recommend the Councils prioritize a framework to consider additional trip limit changes, with work beginning after the completion of the research track assessment

Dogfish – MAFMC

- No changes to specifications/quotas.
- Increase federal trip limit to 7,500 pounds (25% increase)
- In December, consider prioritizing a 2022 framework for additional modifications

Dogfish – ASMFC

- Waiting to see what NEFMC does...