



# Spring Stock Assessment Results

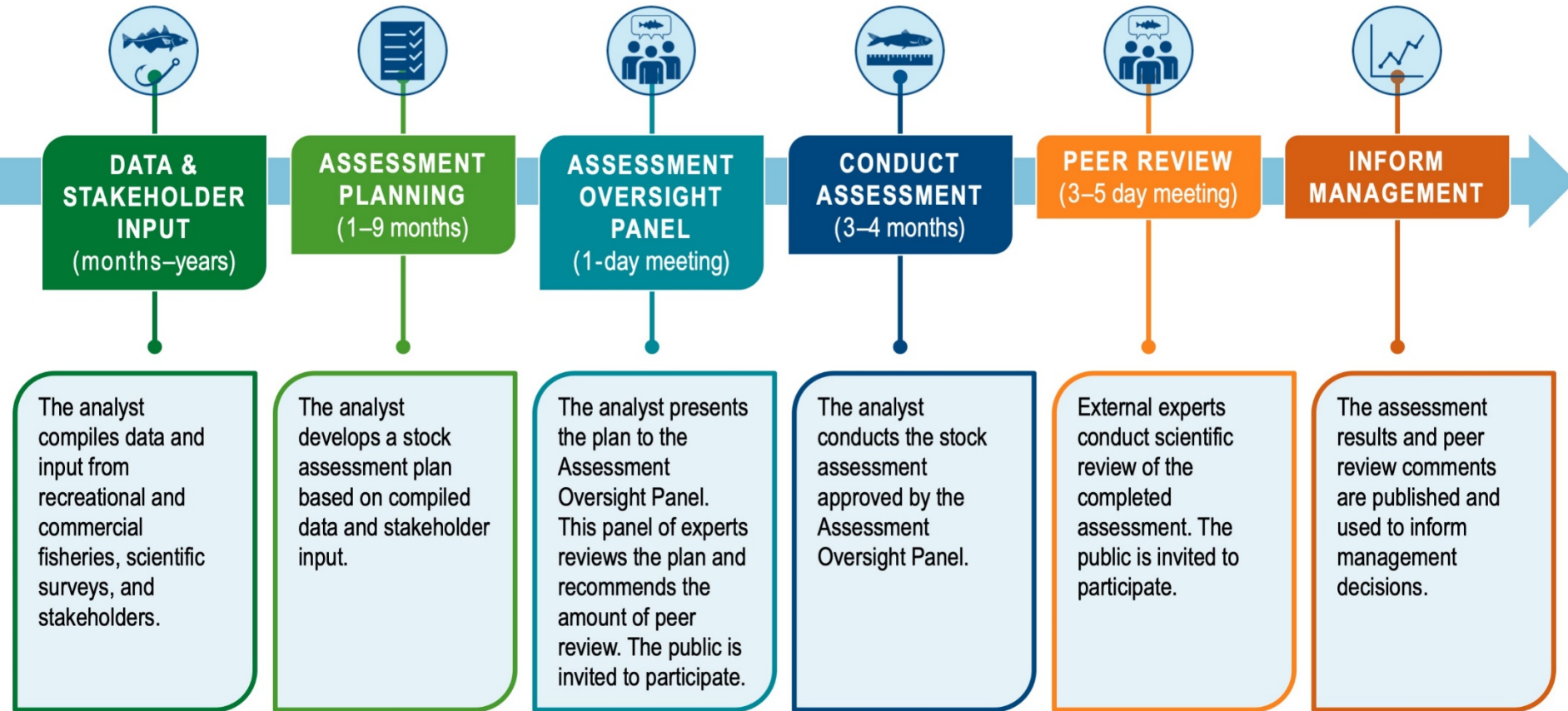
Mike Simpkins, Ph.D.  
READ Chief

# Presentation Outline

- Quick management track process review
- Spring stock assessment results by stock

# Process Review

## MANAGEMENT TRACK STOCK ASSESSMENTS



# Spring Assessments

- Two Assessment Oversight Panel Meetings
  - 25 February 2020: Assessment plans presented for 6 stocks, 1 postponed (mackerel)
  - 29 April 2020: Reconsideration of herring review level given unforeseen challenges in assessment – increased from level 1 to level 2
- 22-26 June 2020 Peer Review
  - Panel: Michael Wilberg (chair), Ed Houde, Fred Serchuk
- Final report of peer review online
- Final assessment report available upon request (formatting for accessibility – aka 508 compliance)

# Five stocks

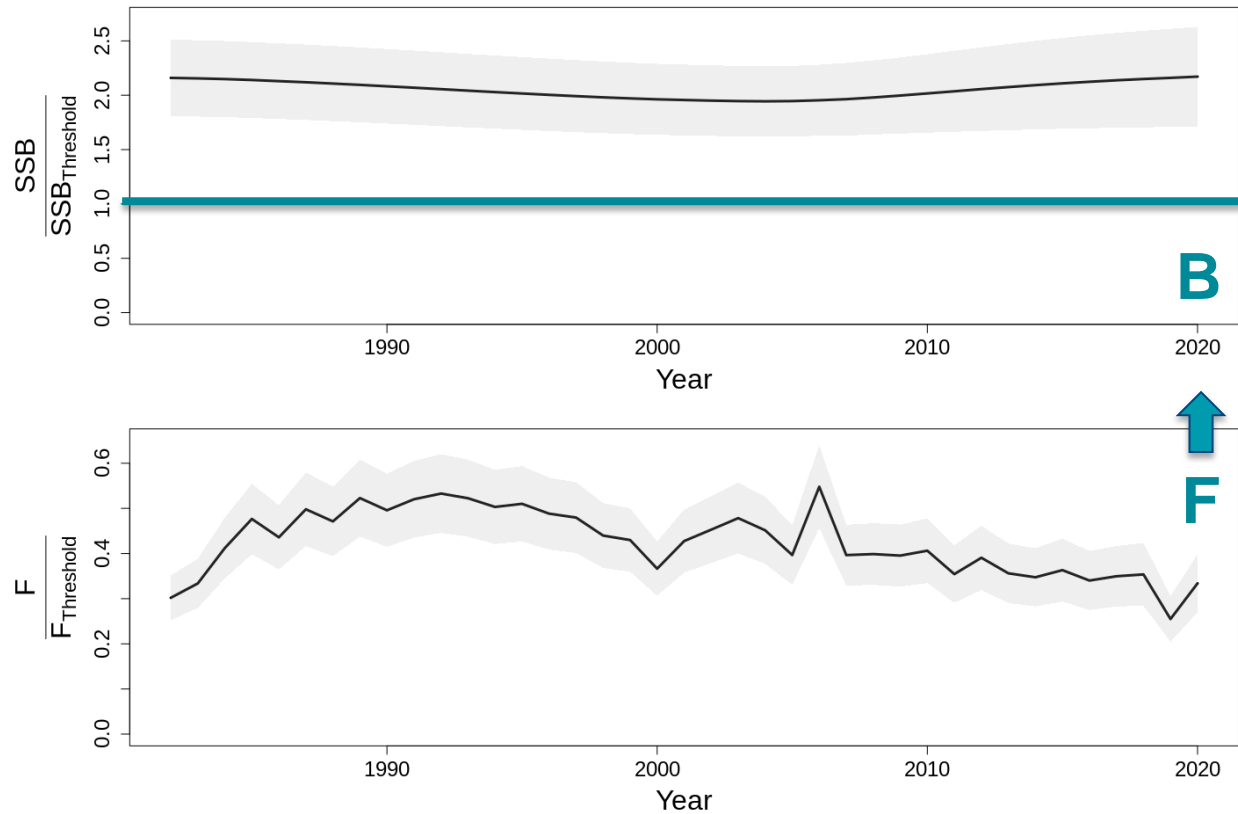
- Ocean quahog (level 1)
- Surfclam (level 3)
- Longfin squid (level 3)
- Butterfish (level 2)
- Herring (level 2)
- *Mackerel postponed to 2021 (COVID data gaps)*



# OCEAN QUAHOG

# Ocean quahog

- Not overfished
- No overfishing
- Change in survey design



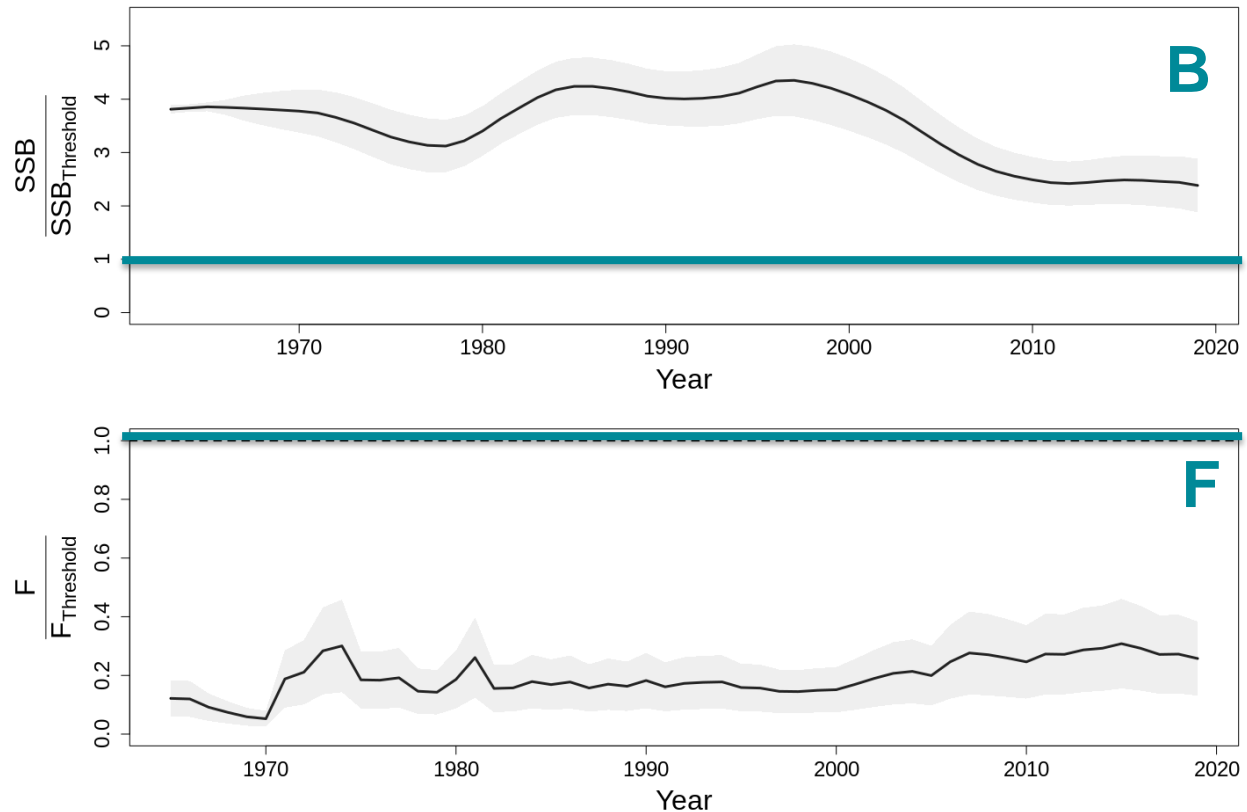


# ATLANTIC SURFCLAM



# Atlantic surfclam

- Not overfished
- No overfishing
- Change in survey design
- Enhanced model flexibility

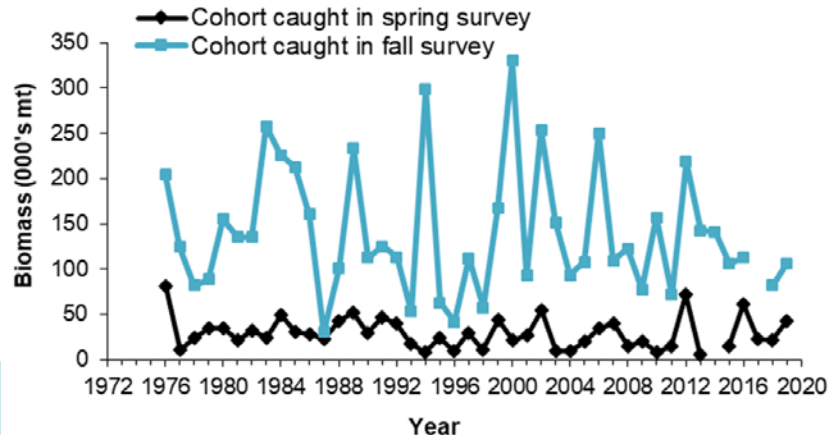
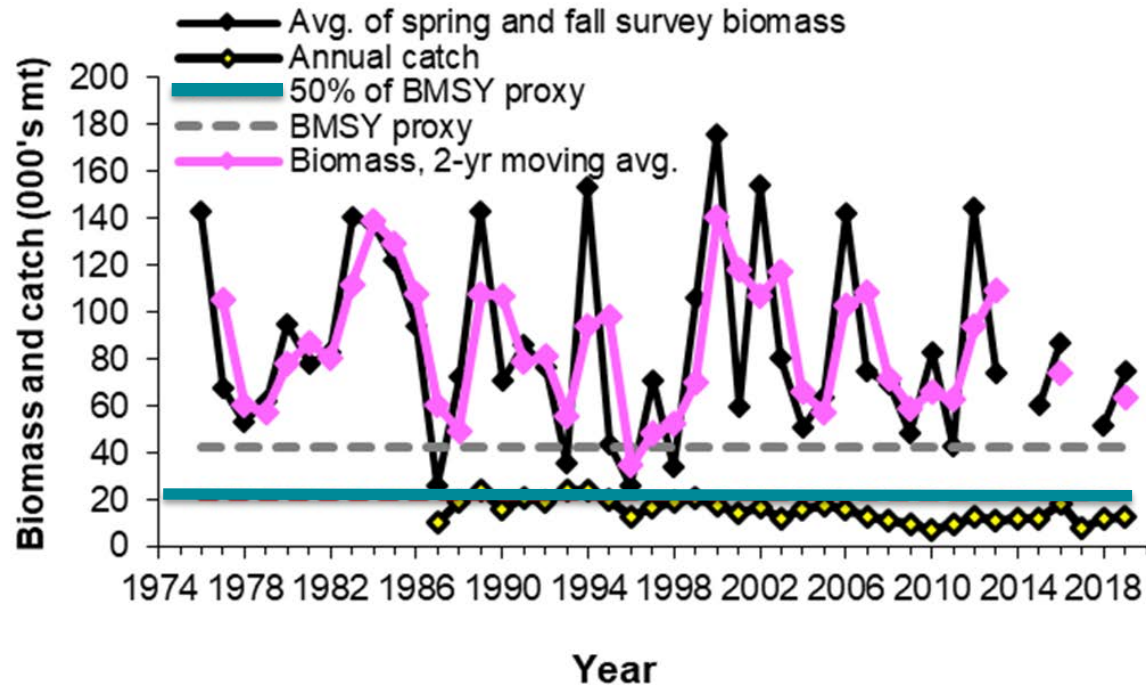




# LONGFIN INSHORE SQUID

# Longfin squid

- Not overfished
- Overfishing unknown
- Exploration of separate BRPs for seasonal cohorts (fall cohort ~5x larger than spring)

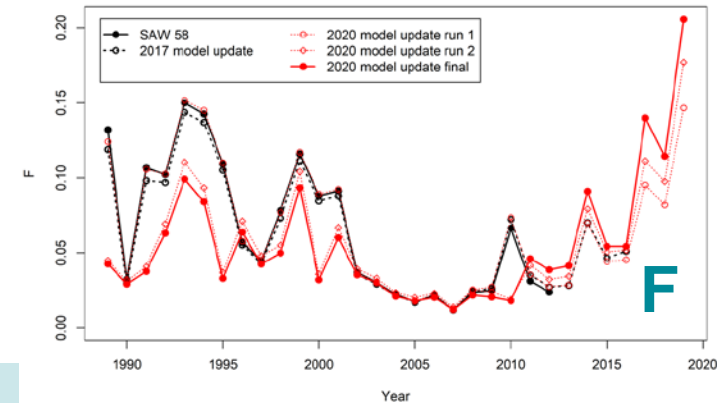
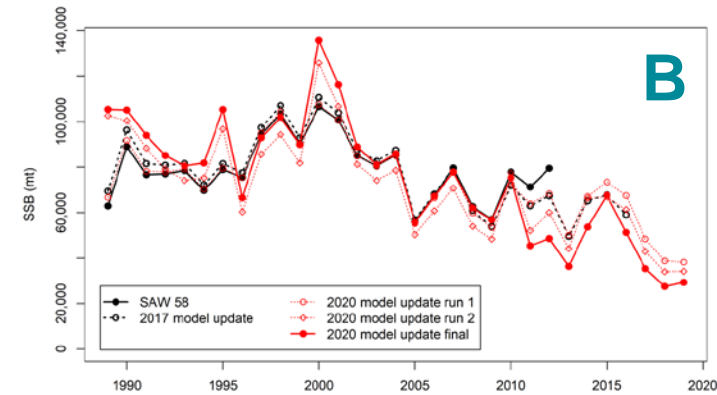
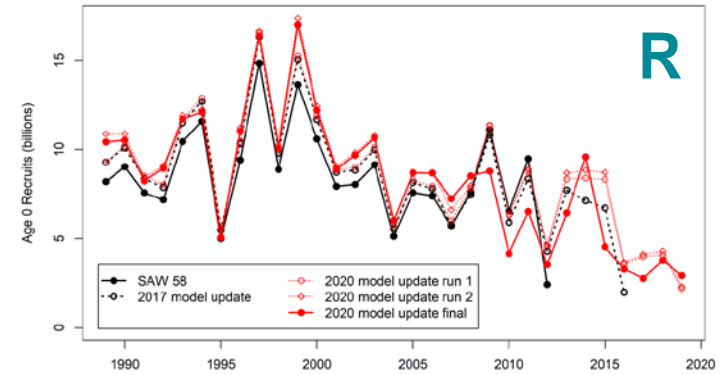
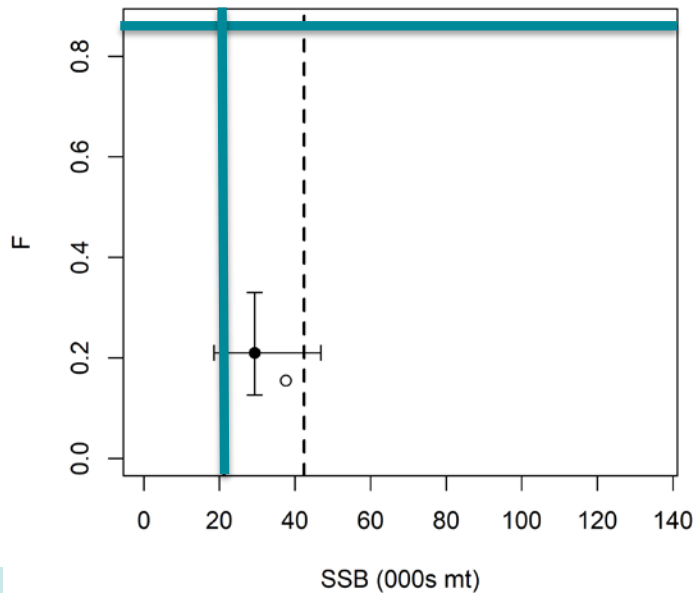




# BUTTERFISH

# Butterfish

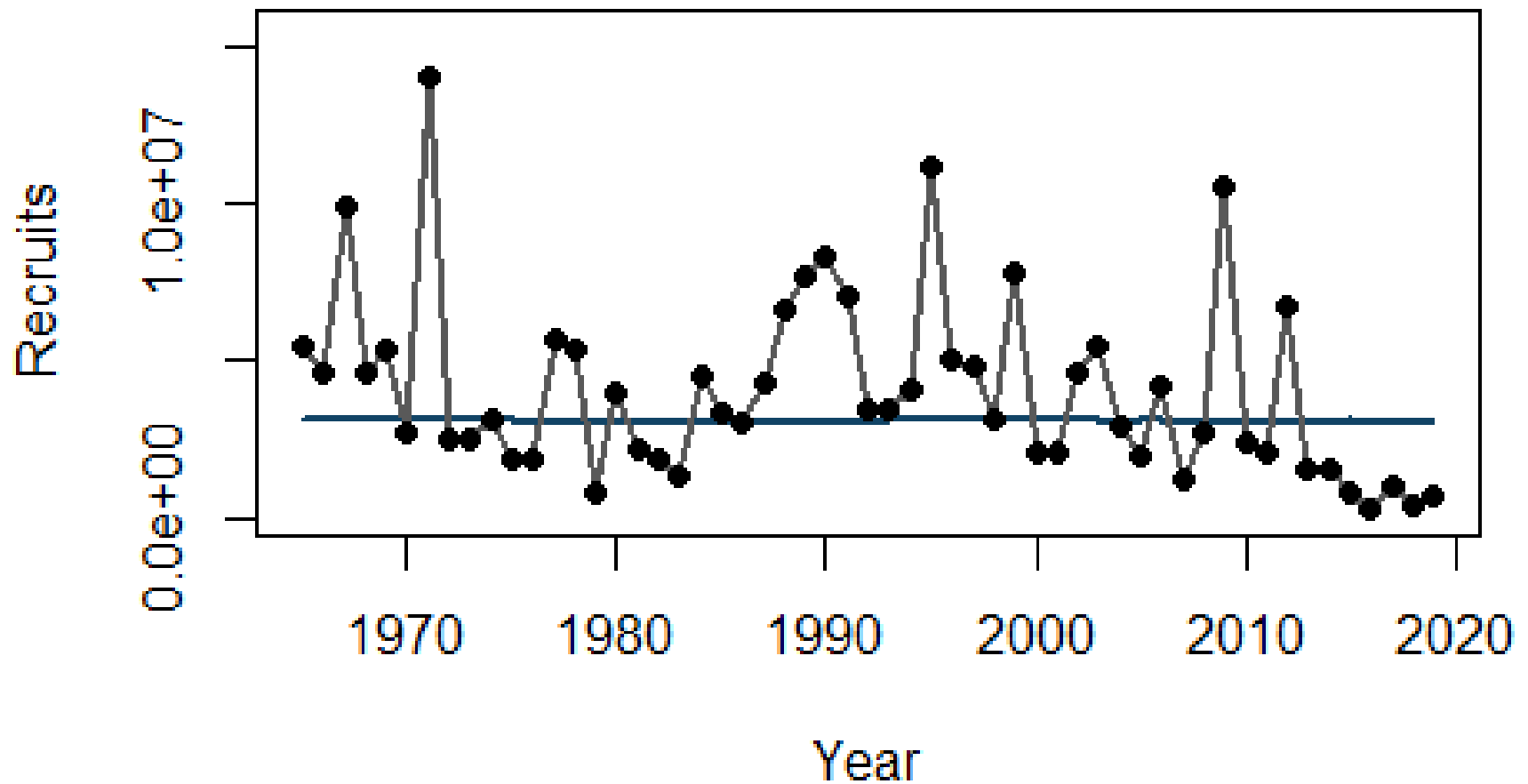
- Recruitment declining
- SSB declining
- F increasing (below threshold)
- Not overfished, no overfishing



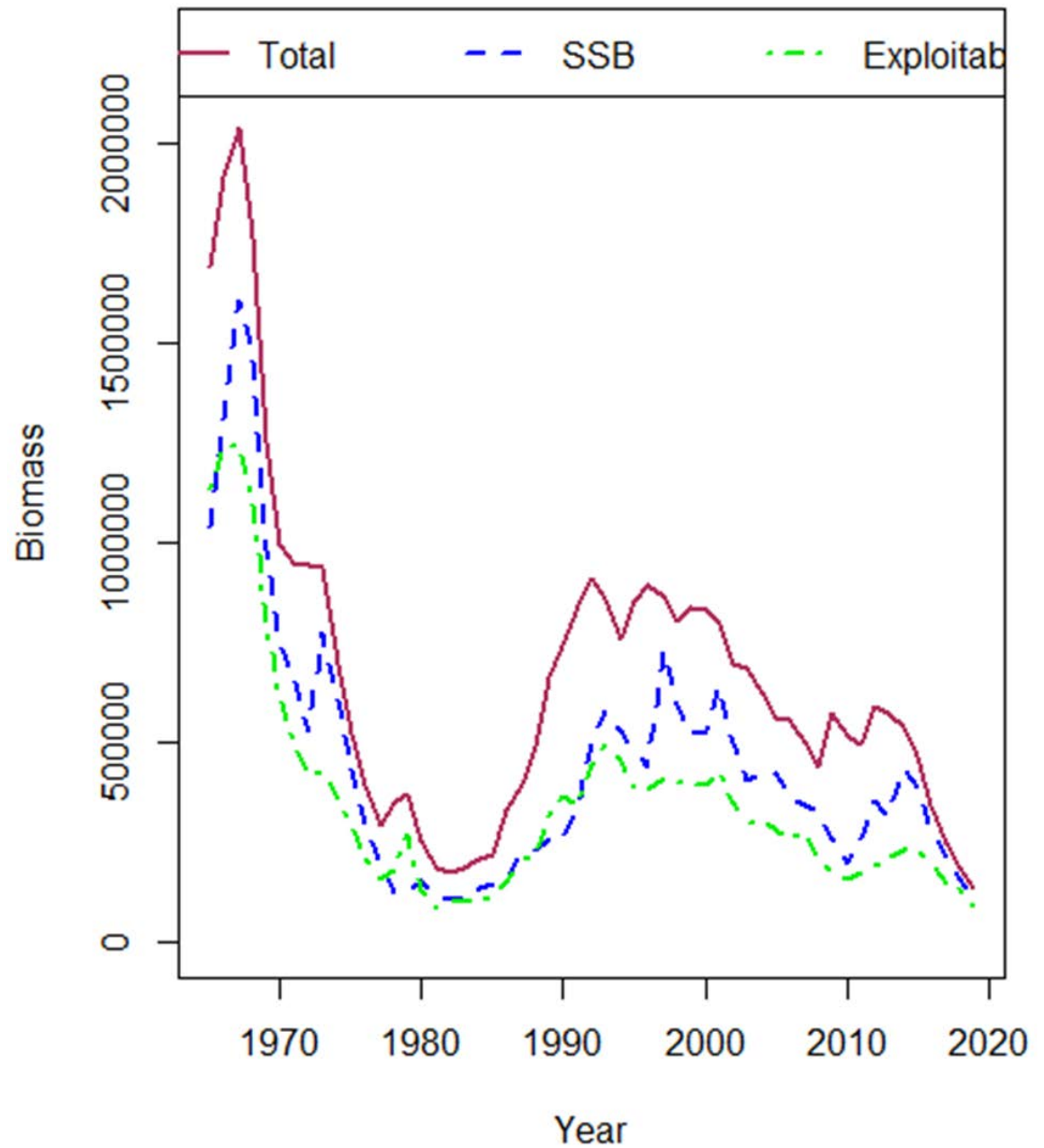


# ATLANTIC HERRING

# Low recruitment

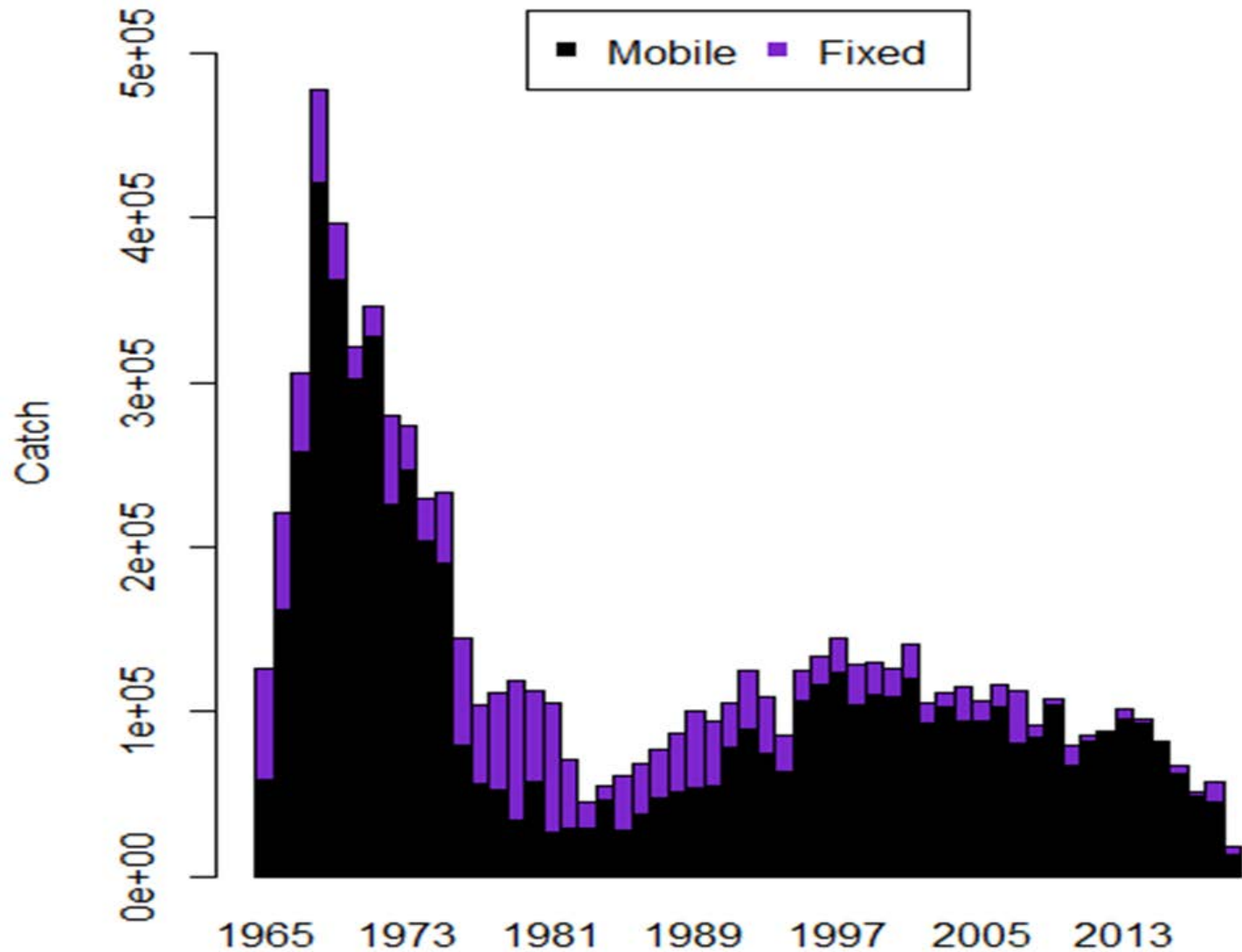


# Biomass decline

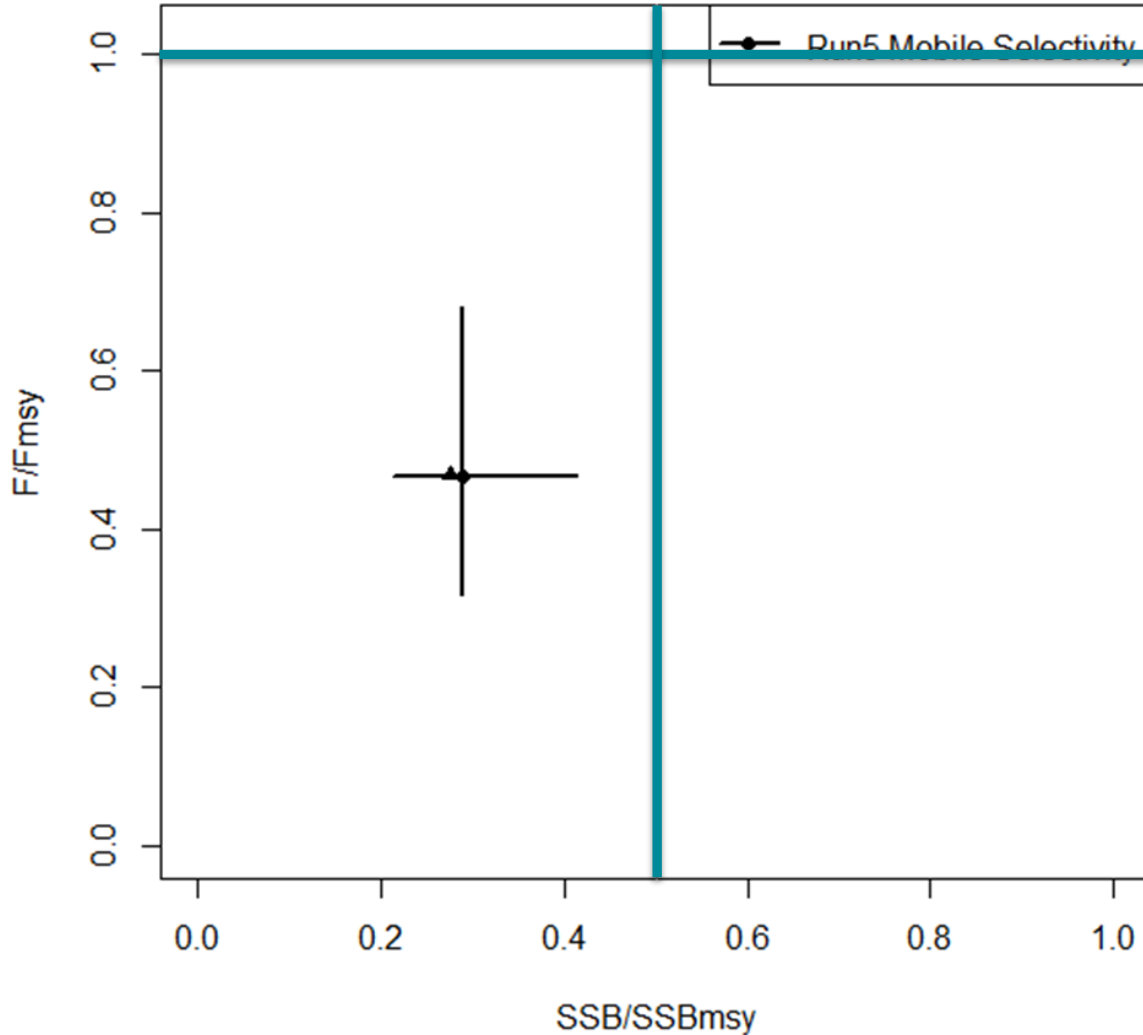




# Catch decline

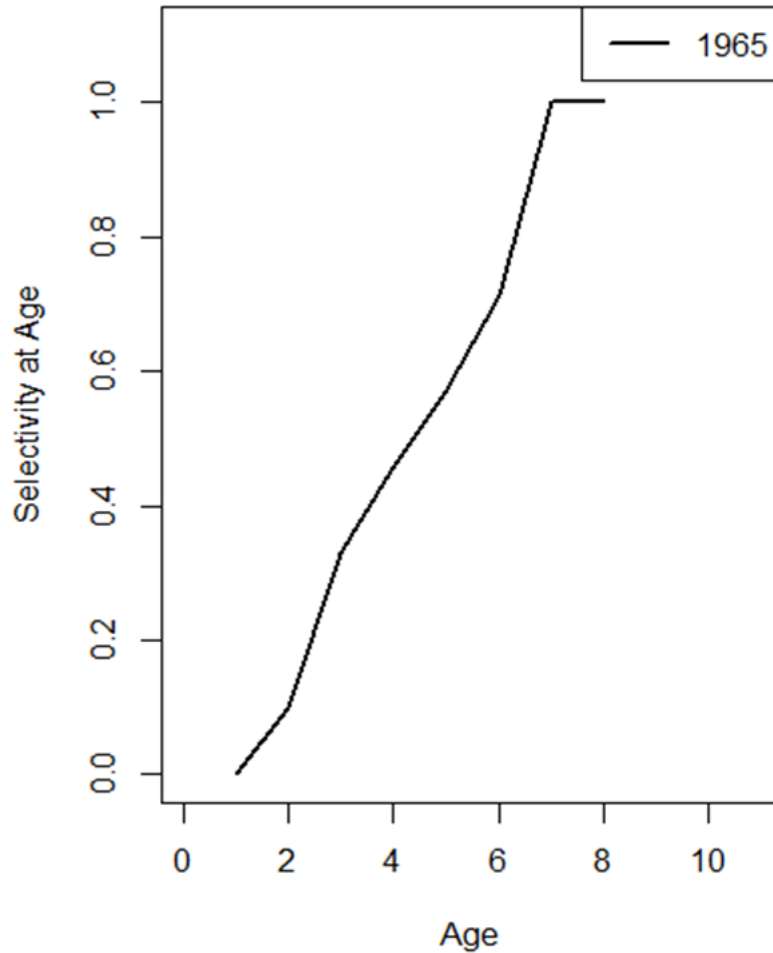


# Stock status – Overfished, No Overfishing

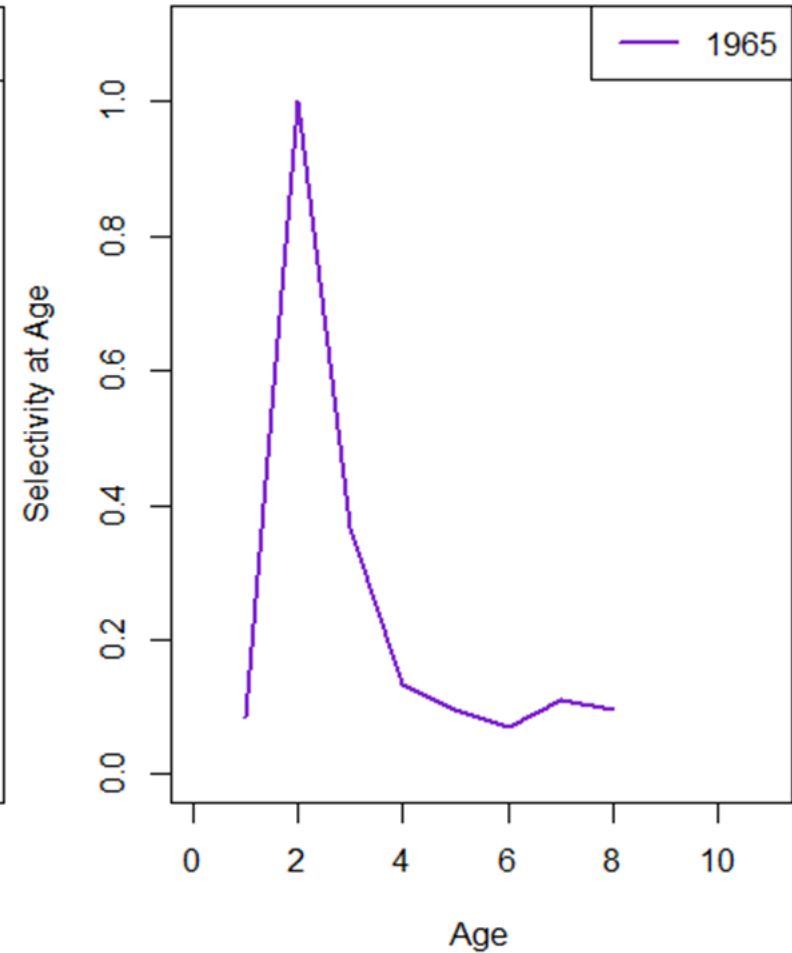


# Challenge of fleets and selectivity

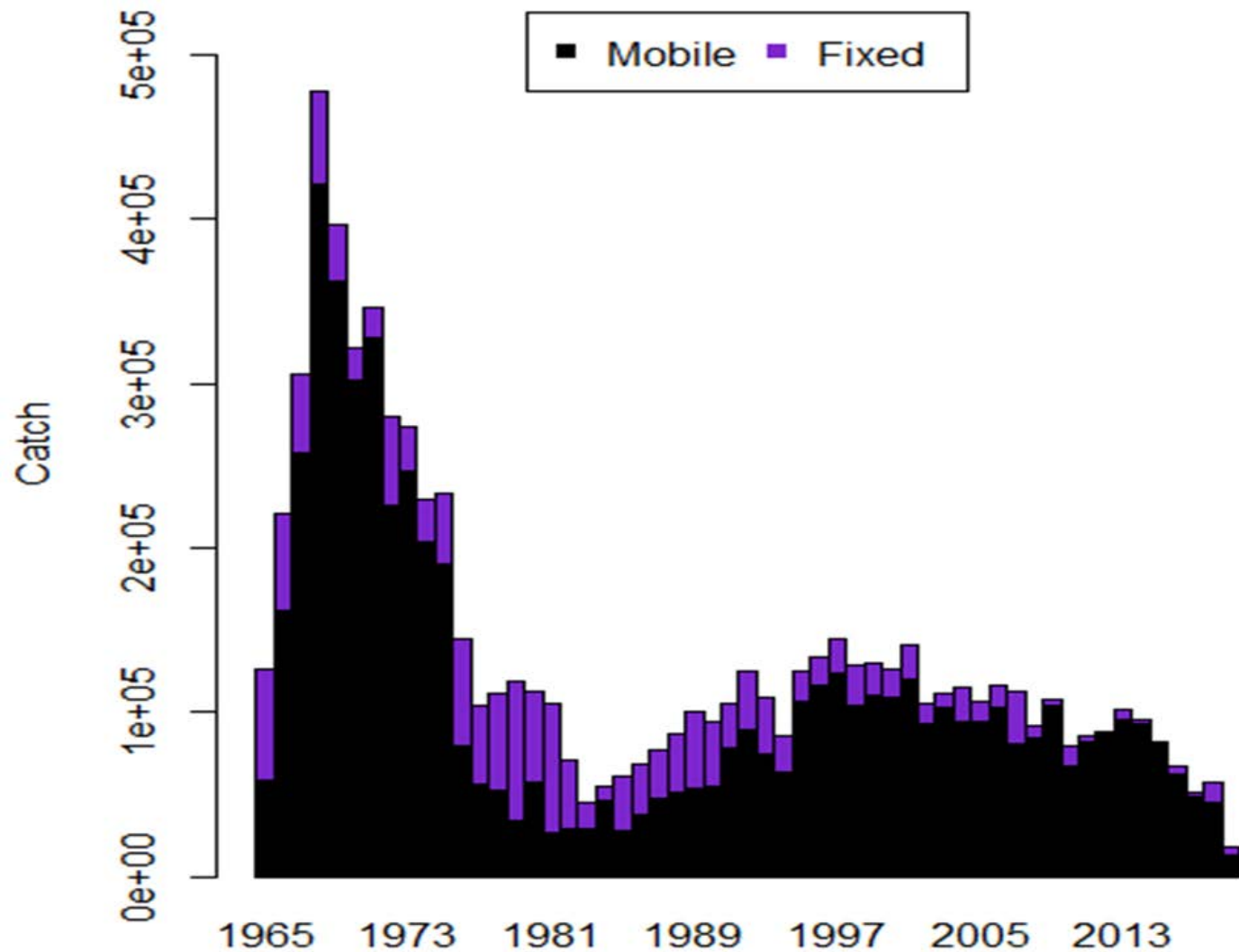
Fleet 1 (Mobile)



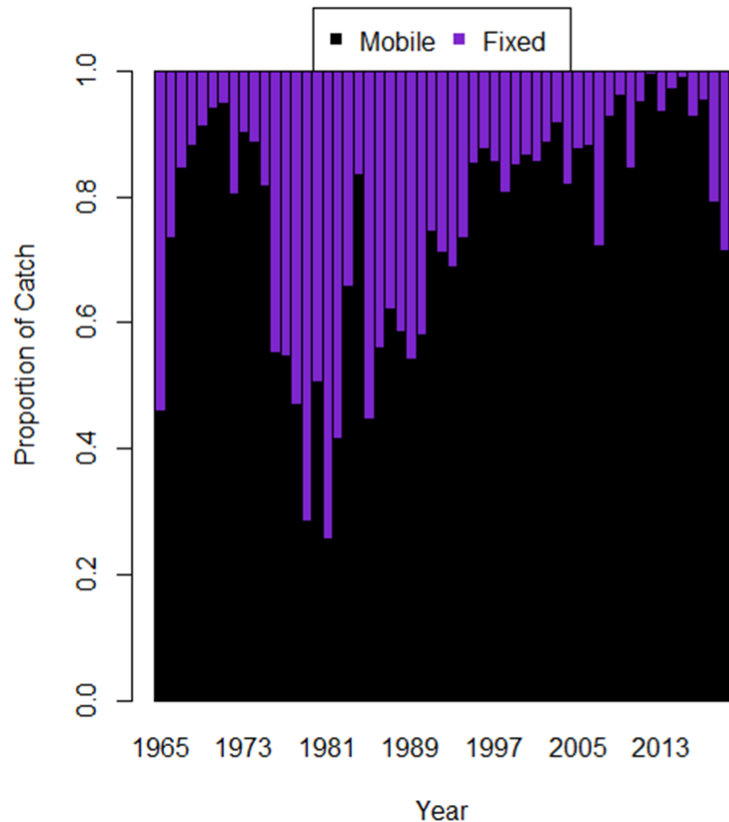
Fleet 2 (Fixed)



# Challenge of fleets and selectivity

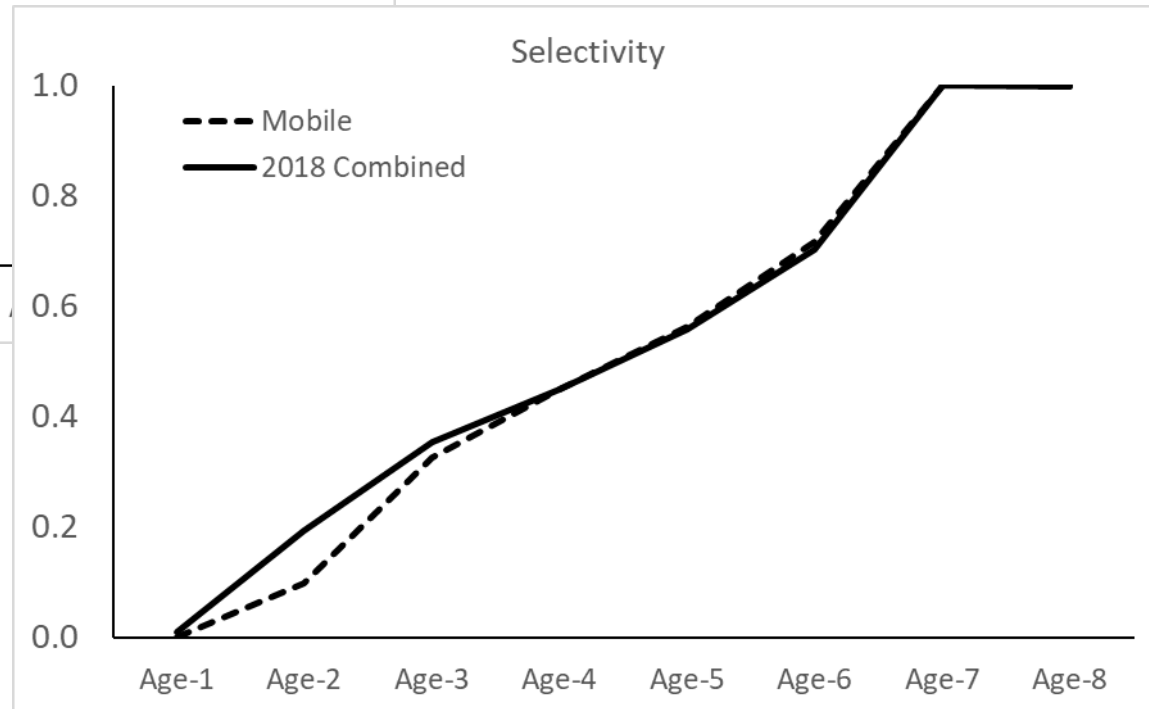
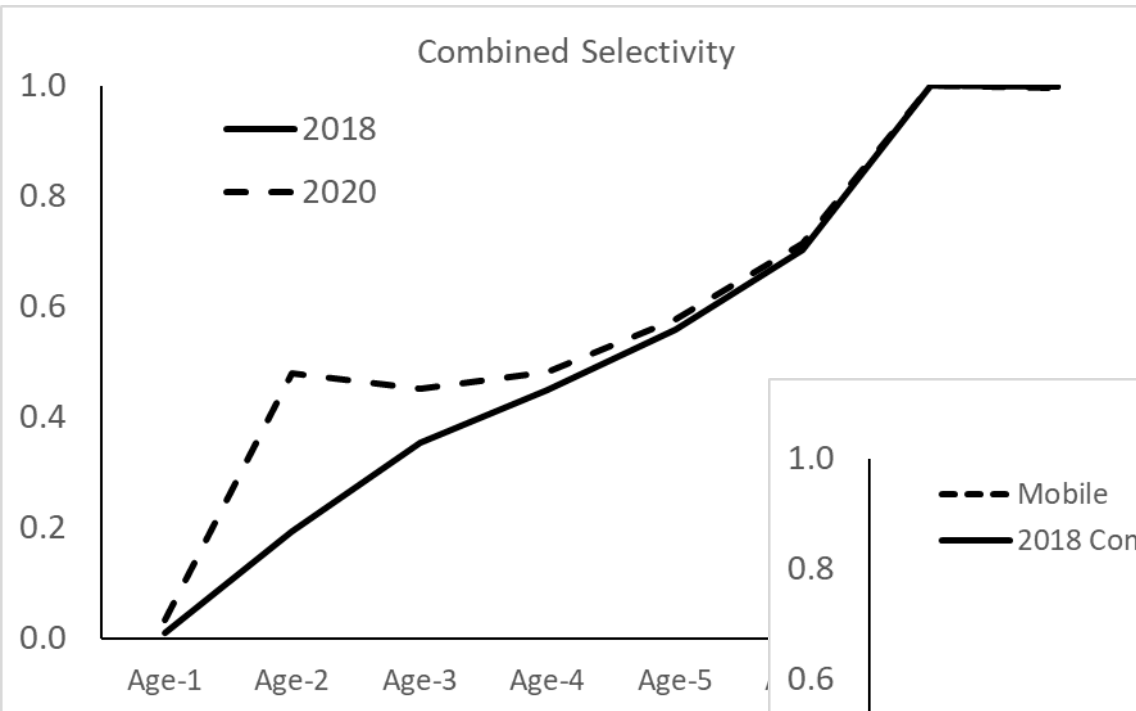


# Challenge of fleets and selectivity



	Mobile	Fixed	%Fixed
2012	87162	513	0.006
2013	95182	6440	0.063
2014	92566	2667	0.028
2015	80465	884	0.011
2016	61808	4849	0.073
2017	48531	2368	0.047
2018	45189	11912	0.209
2019	12721	5115	0.287

# Challenge of fleets and selectivity



# Challenge of fleets and selectivity

- Used mobile selectivity – focus on US fleet
- Probability of overfishing based on comparing Mobile F to Mobile only reference points, but explicitly responsive to input Canadian catch
- Probability of overfished based on comparing SSB to SSBproxy
- Short-term projections explicitly include both fleets



THANK YOU