

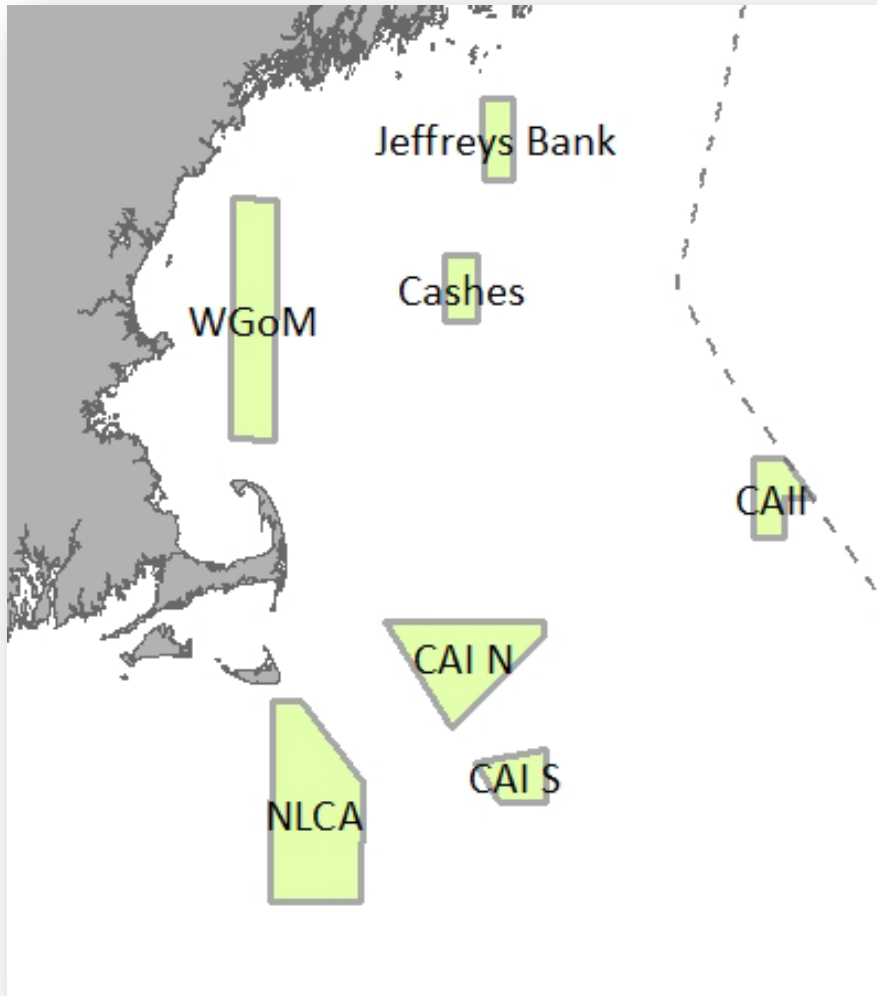
# Omnibus Essential Fish Habitat Amendment 2 Habitat Management Options

New England Fishery Management Council  
Groundfish Committee, GAP, and RAP Joint Meeting  
January 24, 2013

# Individual area-based management options to minimize the adverse effects of fishing on EFH

- Developed using Swept Area Seabed Impact model outputs and other information between summer 2010 and present
- Some based on existing habitat management areas, others in new areas
- Most proposed as mobile bottom-tending gear closures, except enhanced protection for Ammen Rock area
- Gear modifications for trawls were evaluated by the PDT/AP/Ctte but not moved forward for further evaluation as of 12/04/12
- Will be integrated with groundfish management areas once those areas have been developed and reviewed by the Groundfish Ctte

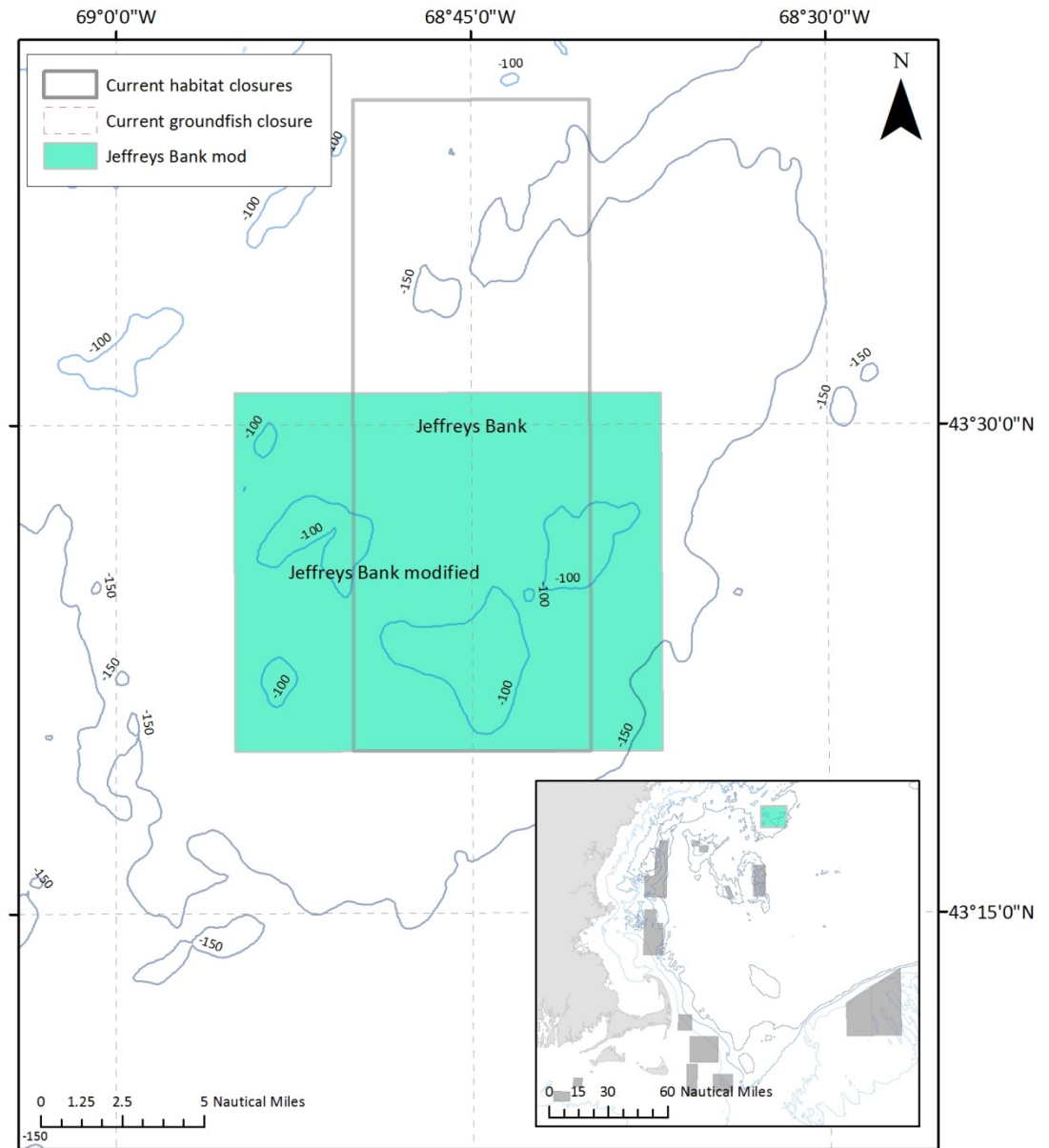
# Options related to current areas



- **Jeffreys Bank:** maintain or modify
- **Cashes Ledge:** maintain or modify
- **WGOM:** maintain, modify, or eliminate
- **CAII:** maintain or eliminate
- **CAI:** maintain or eliminate
- **NLCA:** maintain or eliminate

# Jeffreys Bank

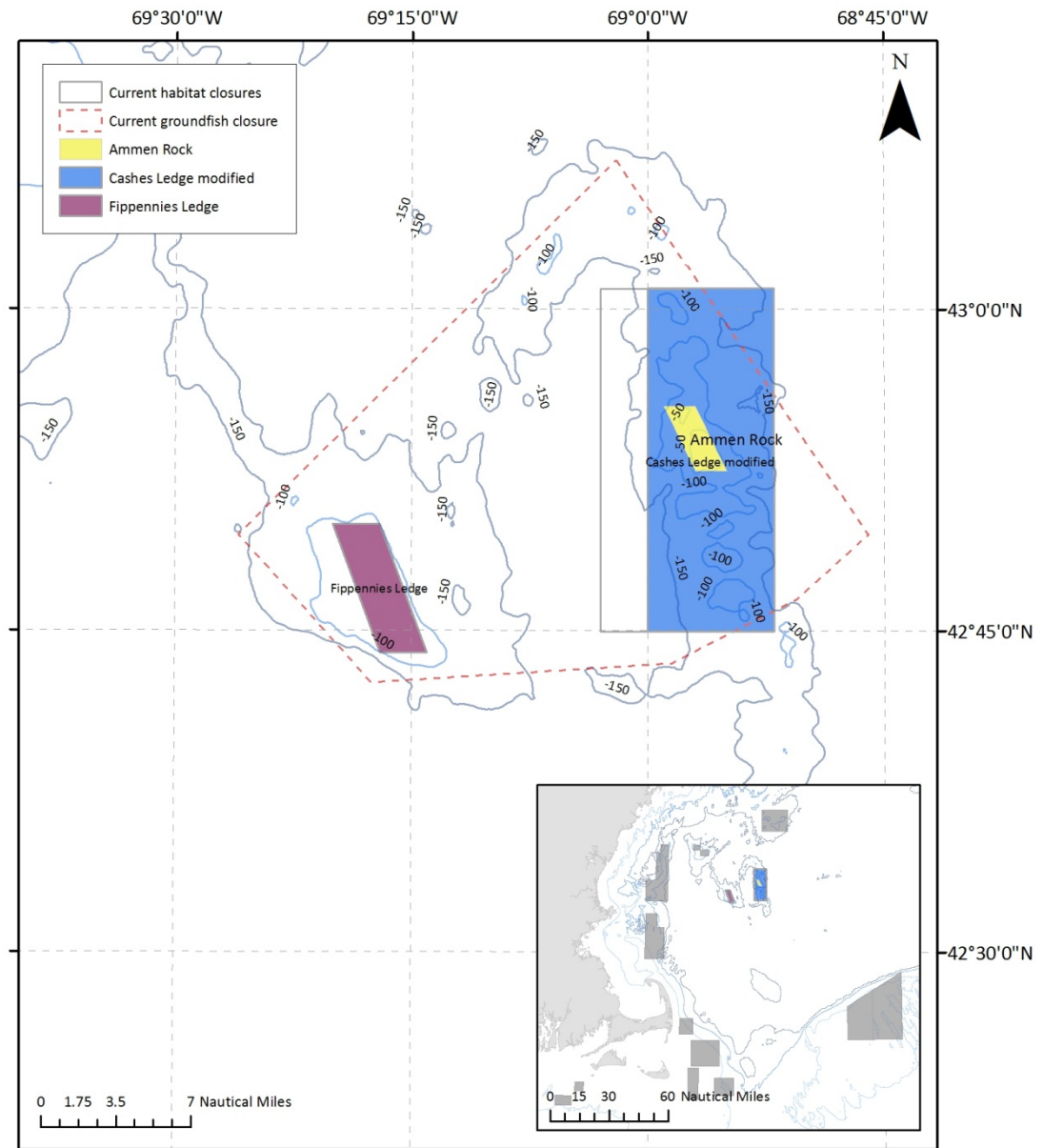
- Current habitat area implemented via Amendment 13, or
- Proposed modification designed to encompass the shallowest areas of Jeffreys Bank when cobble and boulder-dominated habitats are most common
- Both areas proposed as mobile bottom tending gear closures



New England Fishery Management Council Habitat Plan Development Team  
 Map date: 05 Sept 2012  
 NAD 1983 UTM Zone 19N

# Cashes Ledge

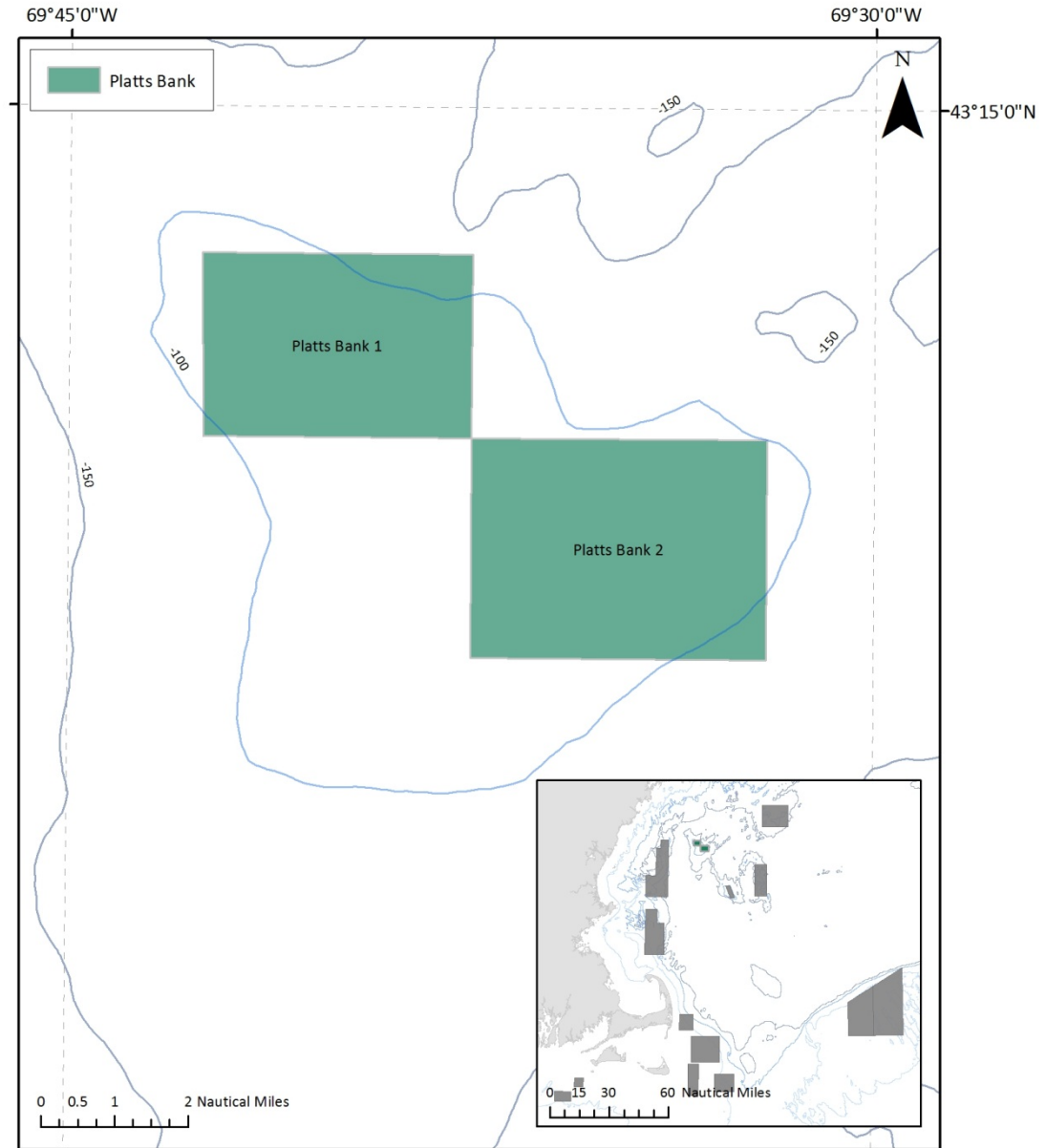
- Current Cashes Ledge habitat area implemented via Amendment 13, or
- Modified Cashes Ledge area shifts boundary to the east – designed to encompass the majority of the shallower ledge areas and allow fishing access in the deeper western portion
- Fippennies Ledge area designed to focus on portions of the ledge where gravel substrates are present
- Cashes Ledge and Fippennies Ledge proposed as mobile bottom tending gear closures
- Ammen Rock area proposed for enhanced protections – no fishing zone



New England Fishery Management Council Habitat Plan Development Team  
 Map date: 10 Sept 2012  
 NAD 1983 UTM Zone 19N

# Platts Bank

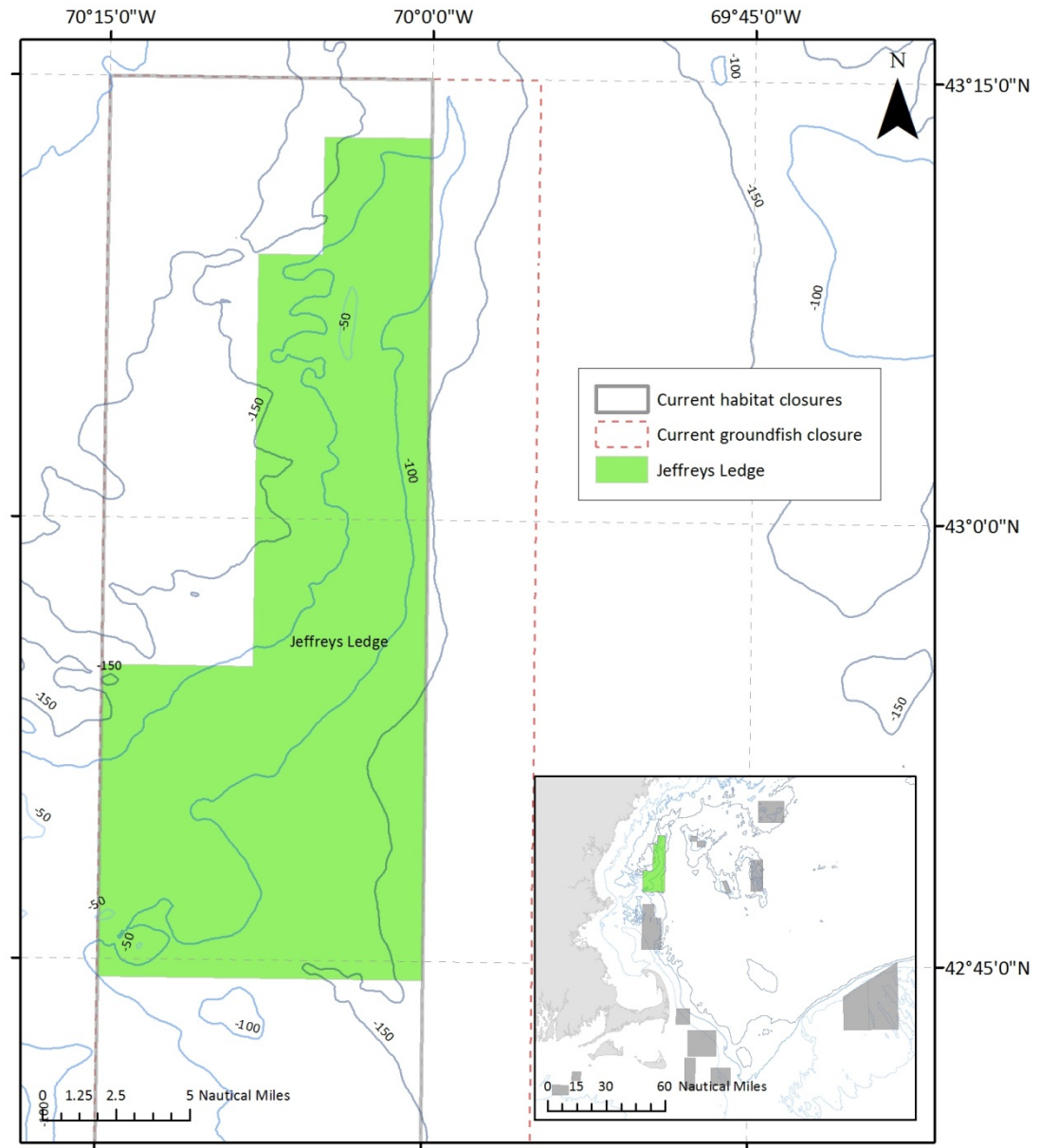
- Currently open to fishing
- Platts Bank areas designed to focus on portions of the bank where gravel substrates are present
- Proposed as a mobile bottom tending gear closure



New England Fishery Management Council Habitat Plan Development Team  
Map date: 05 Sept 2012  
NAD 1983 UTM Zone 19N

# Jeffreys Ledge

- Subset of the WGOM habitat closure, enacted via Amendment 13
- Area designed to focus on shallower ledge habitats and allow fishing access in the deeper, muddier areas in the northwestern portion
- The ledge itself contains gravel dominated habitats more vulnerable to fishing than adjacent soft bottomed habitats
- Proposed as a mobile bottom tending gear closure

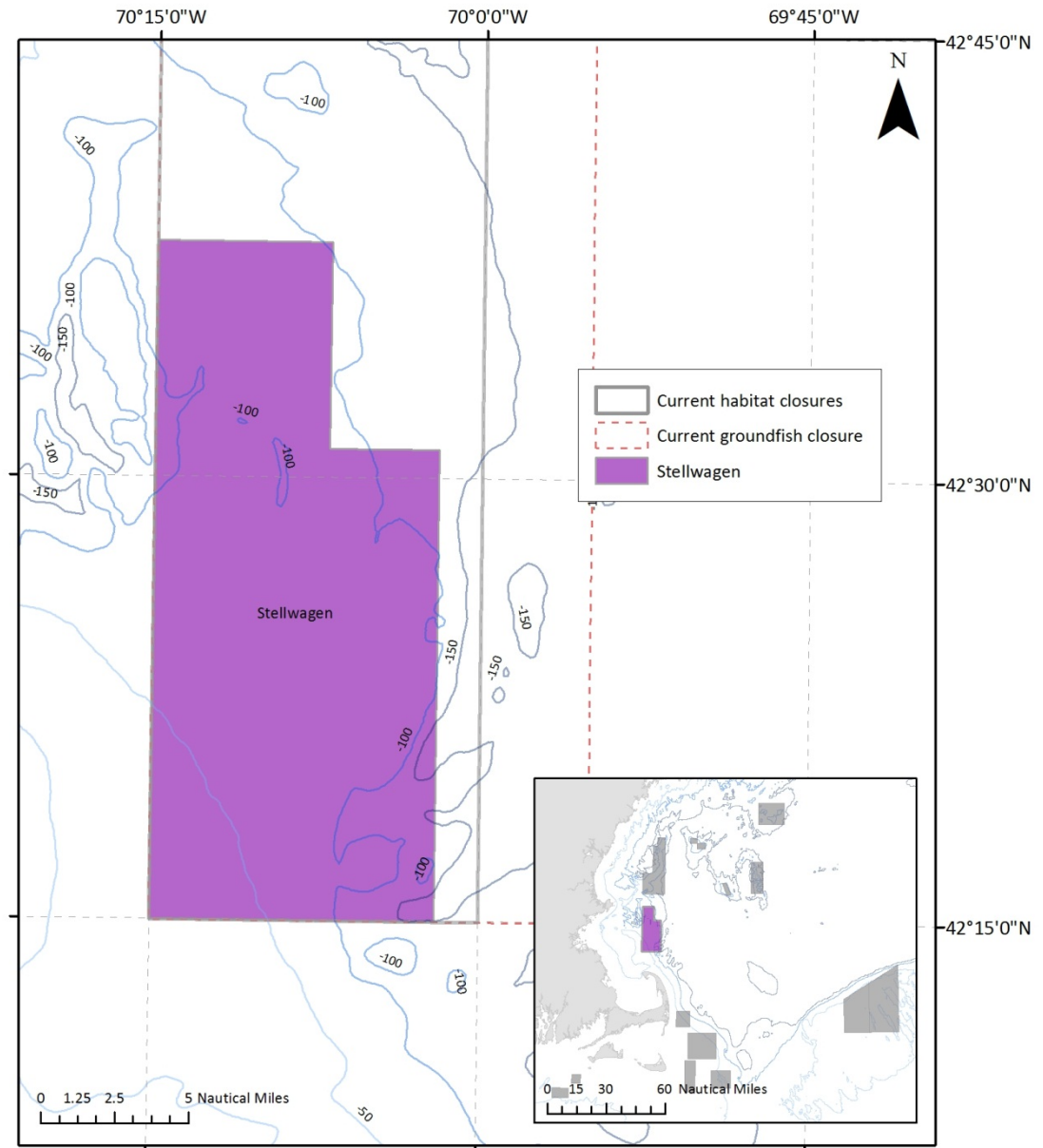


New England Fishery Management Council Habitat Plan Development Team  
Map date: 05 Sept 2012  
NAD 1983 UTM Zone 19N



# Stellwagen

- Subset of the WGOM habitat closure, enacted via Amendment 13
- Overlaps with SBNMS
- Area designed to encompass gravel dominated habitats more vulnerable to fishing; extent of these habitats documented in multibeam data (extra-SASI)
- Proposed as a mobile bottom tending gear closure

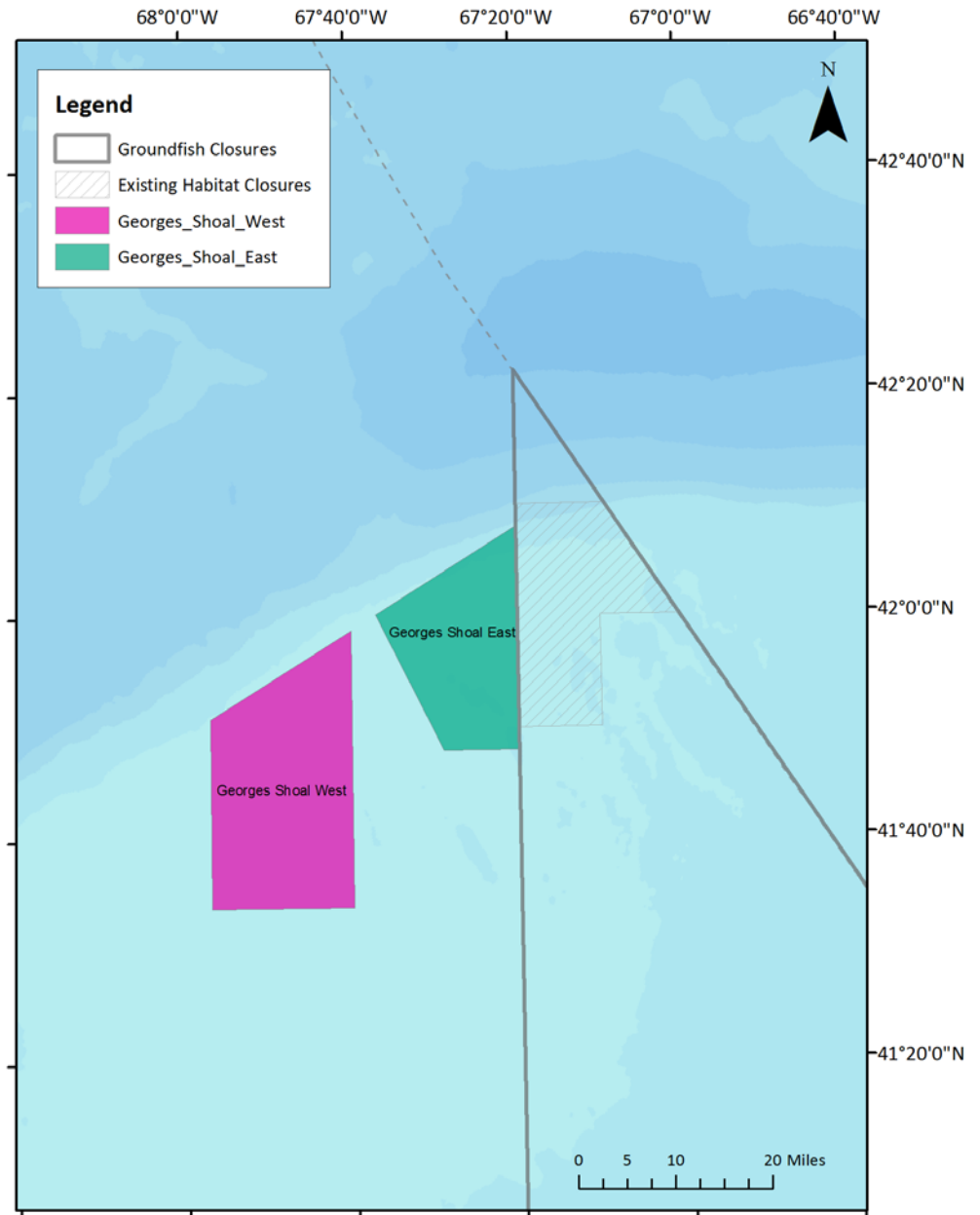


New England Fishery Management Council Habitat Plan Development Team  
Map date: 05 Sept 2012  
NAD 1983 UTM Zone 19N



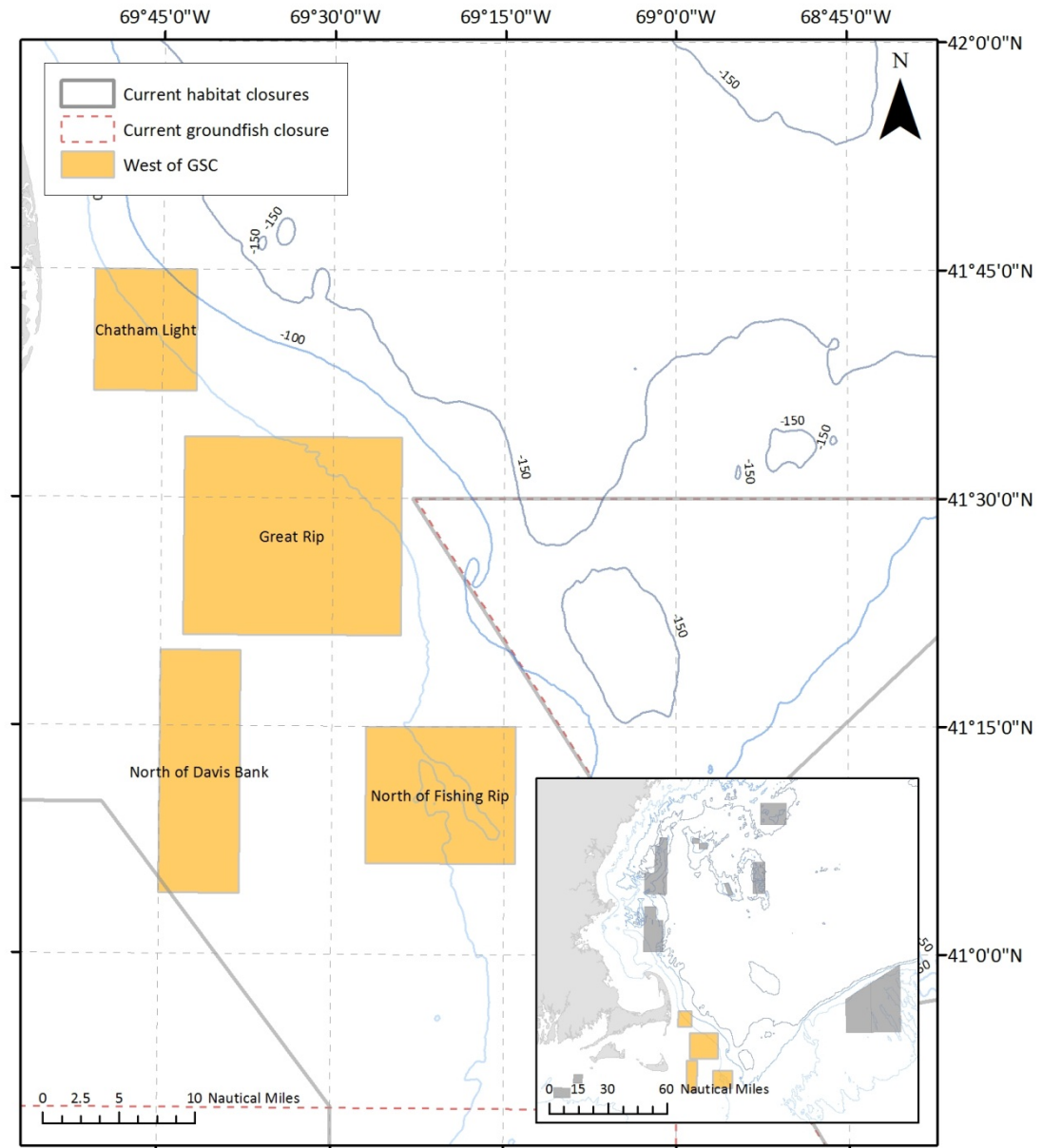
# Georges Shoal

- Currently open to fishing
- Designed to encompass one or more gravel 'hotspots' in and around one of the trawl LISA clusters
- Both areas proposed as mobile bottom tending gear closures



# West of the Great South Channel

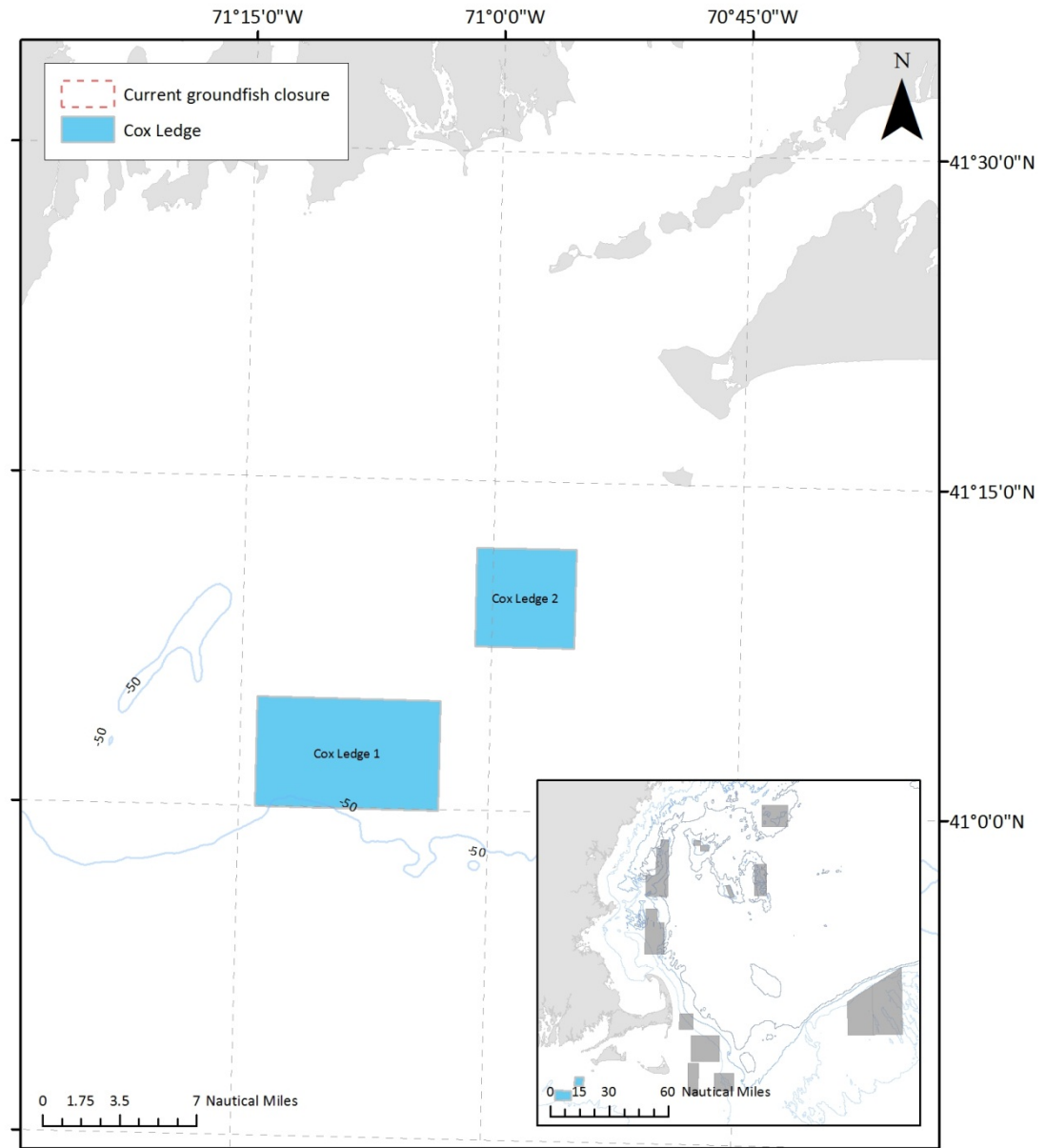
- Currently open to fishing
- Designed to encompass one or more gravel 'hotspots' in and around one of the trawl LISA clusters
- All areas proposed as mobile bottom tending gear closures



New England Fishery Management Council Habitat Plan Development Team  
Map date: 05 Sept 2012  
NAD 1983 UTM Zone 19N

# Cox Ledge

- Currently open to fishing
- Designed to encompass gravel-dominated habitats in and around one of the trawl LISA clusters
- Areas proposed as mobile bottom tending gear closures



New England Fishery Management Council Habitat Plan Development Team  
Map date: 05 Sept 2012  
NAD 1983 UTM Zone 19N

# Individual area-based management options combined into alternatives

## **Adverse Effects Minimization Alternative 1 (No action)**

- Existing habitat areas would remain in place as mobile bottom-tending gear closures

## **Adverse Effects Minimization Alternative 2**

- Remove CAII, CAI, NLCA habitat areas
- Mobile bottom-tending gear closures:
  - Modified Jeffreys Bank, Cashes Ledge, WGOM
  - New areas on Fippennies Ledge, Georges Shoal, W. Great South Channel, and Cox Ledge
- Ammen Rock closed to all fishing

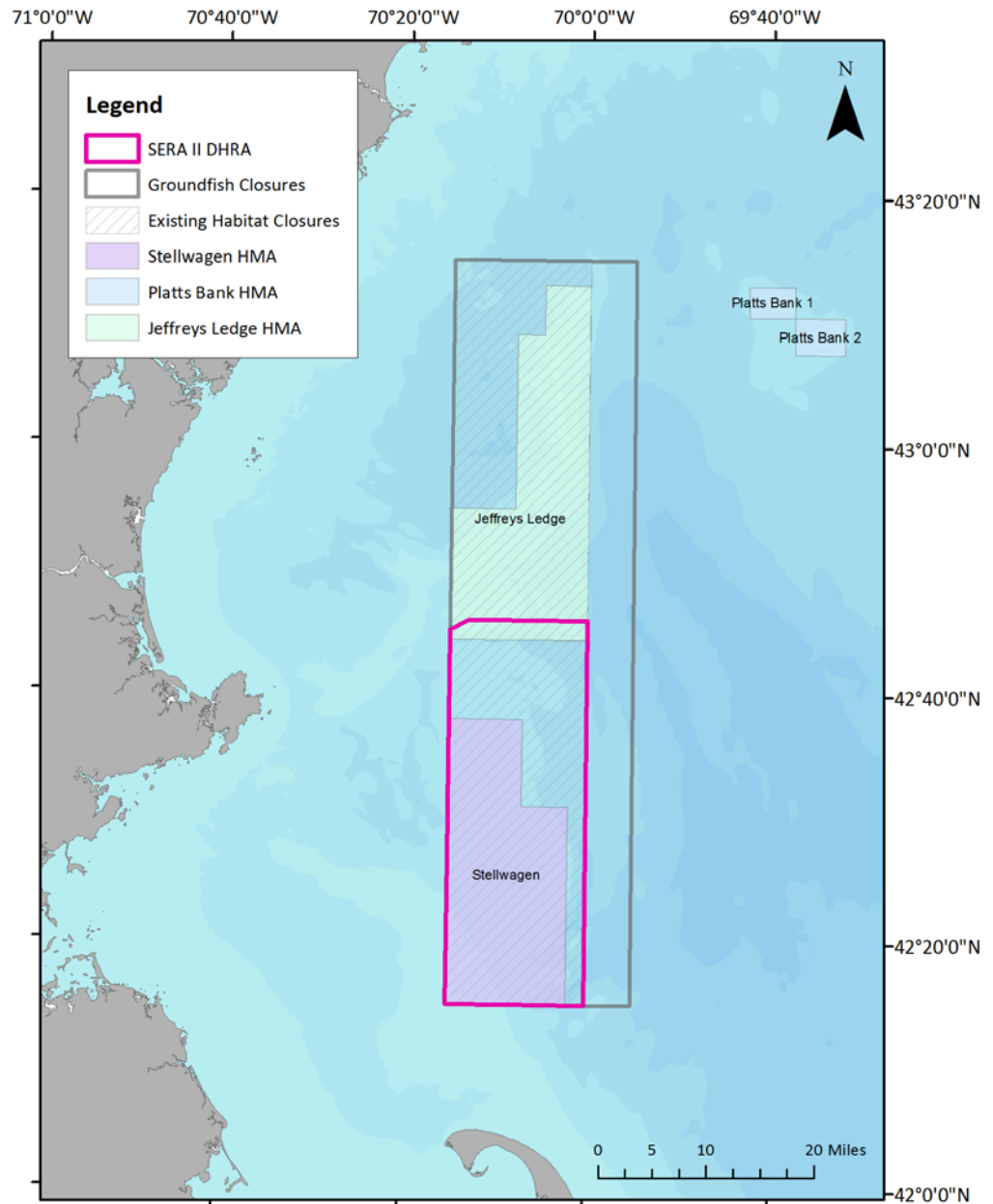
## **Alternative 3 – TBD subset of Alternative 2**

# Alternatives to designate Dedicated Habitat Research Areas (DHRAs)

- Research agenda includes four themes: gear impacts, habitat recovery, natural vs. human disturbance, habitat-related productivity
- Research areas would be closed to certain gears as needed with any fishing impacts studies relying on research-directed fishing activities
- Re-evaluation after three years to determine if area is actively being used, and if not, area would sunset

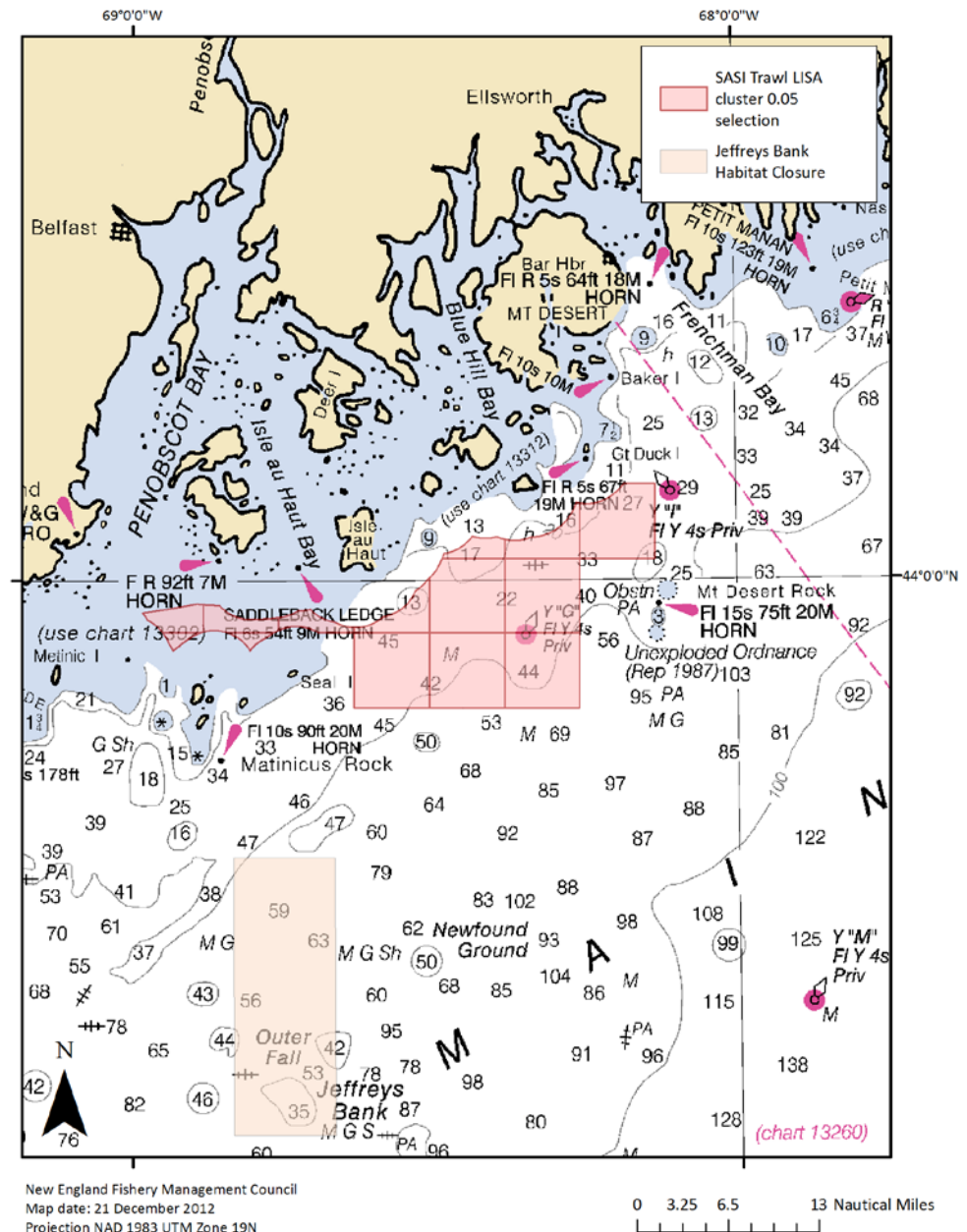
# SERA II

- Within existing WGOM habitat closure – encompasses Stellwagen HMA and part of JL HMA
- Nexus to Stellwagen Bank National Marine Sanctuary
- Multi-stakeholder proposal



# Eastern Maine DHRA

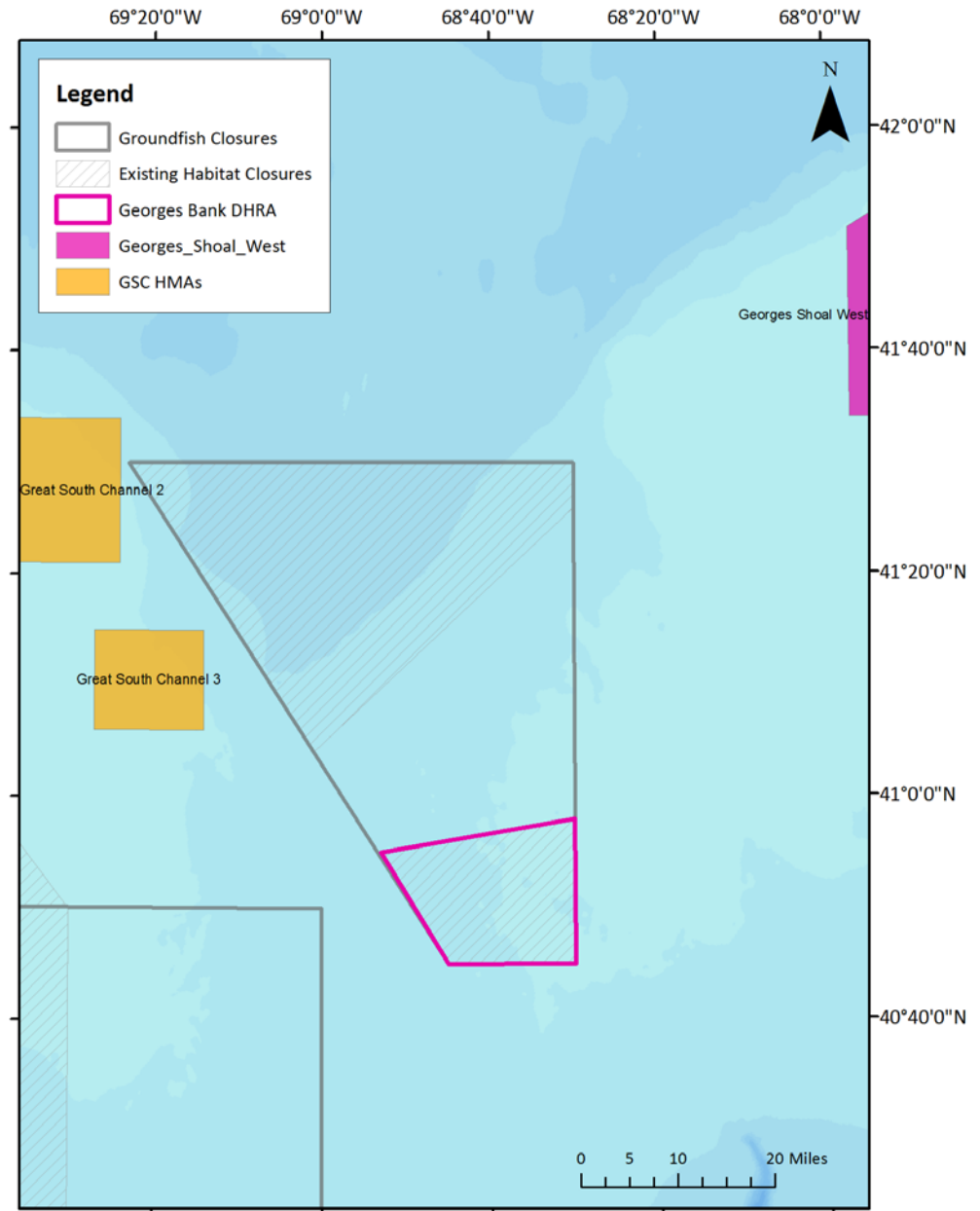
- Within/adjacent to a cluster of high vulnerability habitats identified by the SASI model
- Exact boundaries in development by PDT
- Focus on groundfish habitats
- Stakeholder proposal





# Georges Bank DHRA

- Within/adjacent to southern part of existing CAI habitat closure
- Focus on scallop productivity issues
- Stakeholder proposal



# Next steps

- Groundfish Closed Area Technical Team (CATT) completes work to identify management areas to meet groundfish-related objectives
- CATT recommendations go to the Groundfish Committee
- Joint Groundfish/Habitat Committee process to reconcile habitat and groundfish options and identify a range of area-management alternatives for Council approval