

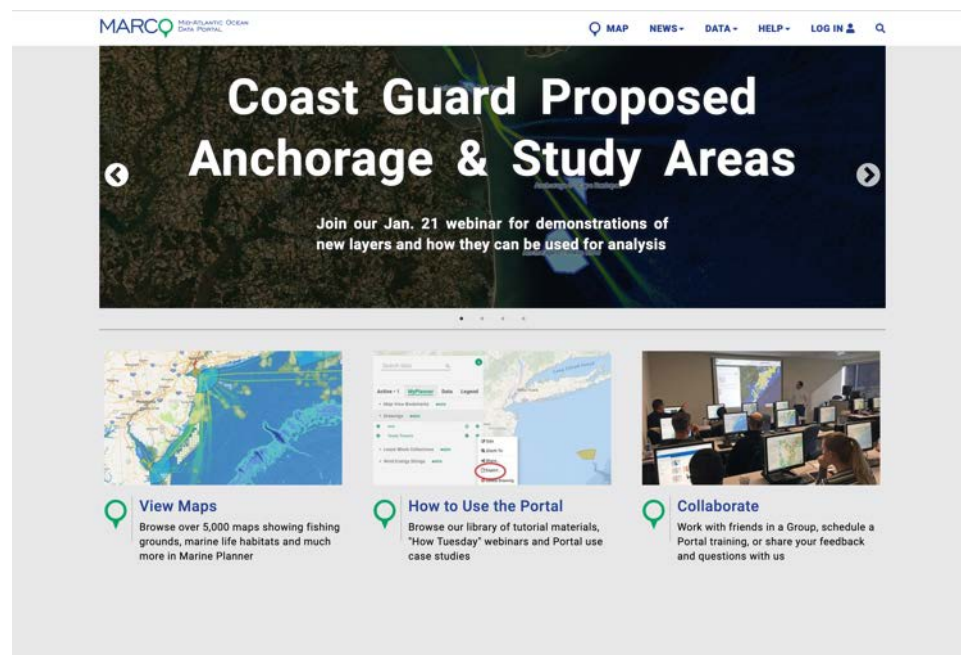
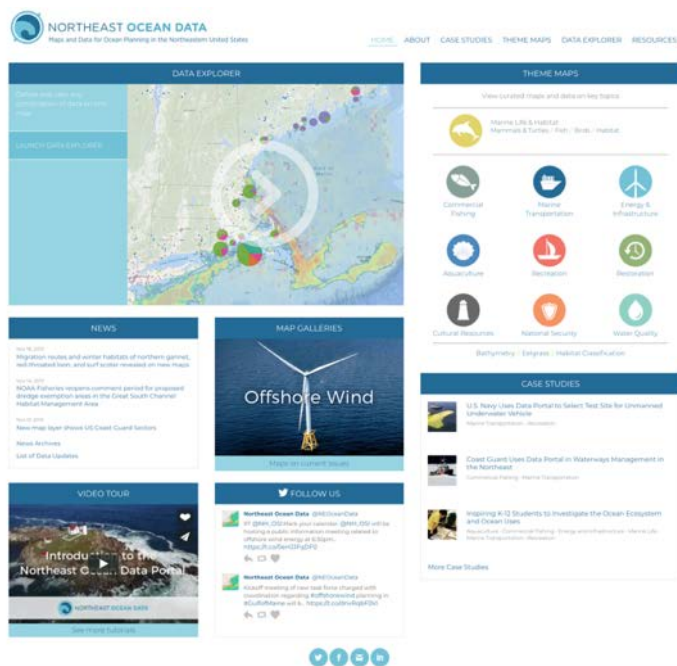
Updating Commercial Fisheries Data on the Northeast and Mid-Atlantic Ocean Data Portals

Nick Napoli, NROC & MARCO
Fiona Hogan, RODA



NROC
Northeast Regional
Ocean Council

MARCO
MID-ATLANTIC REGIONAL
COUNCIL ON THE OCEAN



Overview of Mid-Atlantic and Northeast Ocean Data Portals

- Over 5,000 map products showing the footprint of activities and distribution of resources
- Products derived from federal, state, tribal, research/academic, and other sources
- Informed and vetted by regional experts, agencies, and stakeholders
- Functionality focuses on interactive mapping, contextual information, sharing, and data download



Overview of Mid-Atlantic and Northeast Ocean Data Portals

Ocean Resources and Conditions Data Themes

- Marine mammals & sea turtles
- Fish
- Birds
- Habitat & other marine life
- Oceanography
- Bathymetry
- Geology, sand & sediment
- Water quality

Ocean Uses and Economics Data Themes

- Administrative & management areas
- Commercial fishing
- Aquaculture
- Energy
- Marine transportation & maritime
- National security
- Recreation
- Culture
- Socioeconomic

Overview of Mid-Atlantic and Northeast Ocean Data Portals

Portal uses

- Fishery management council alternatives
- USCG waterways management
- US Navy to ID areas for testing AUVs
- Offshore wind
- Energy and telecommunications cables
- Aquaculture siting/alternatives
- Dredge material disposal site designation
- Environmental assessments/NEPA
- State planning efforts and state portals throughout both regions
- Education & research

Portal users

- State and federal agencies
- Tribes
- Municipalities
- Industry
- Project proponents/developers
- Consultants
- Stakeholder/public comment
- Universities
- K-12 Schools
- Aquariums

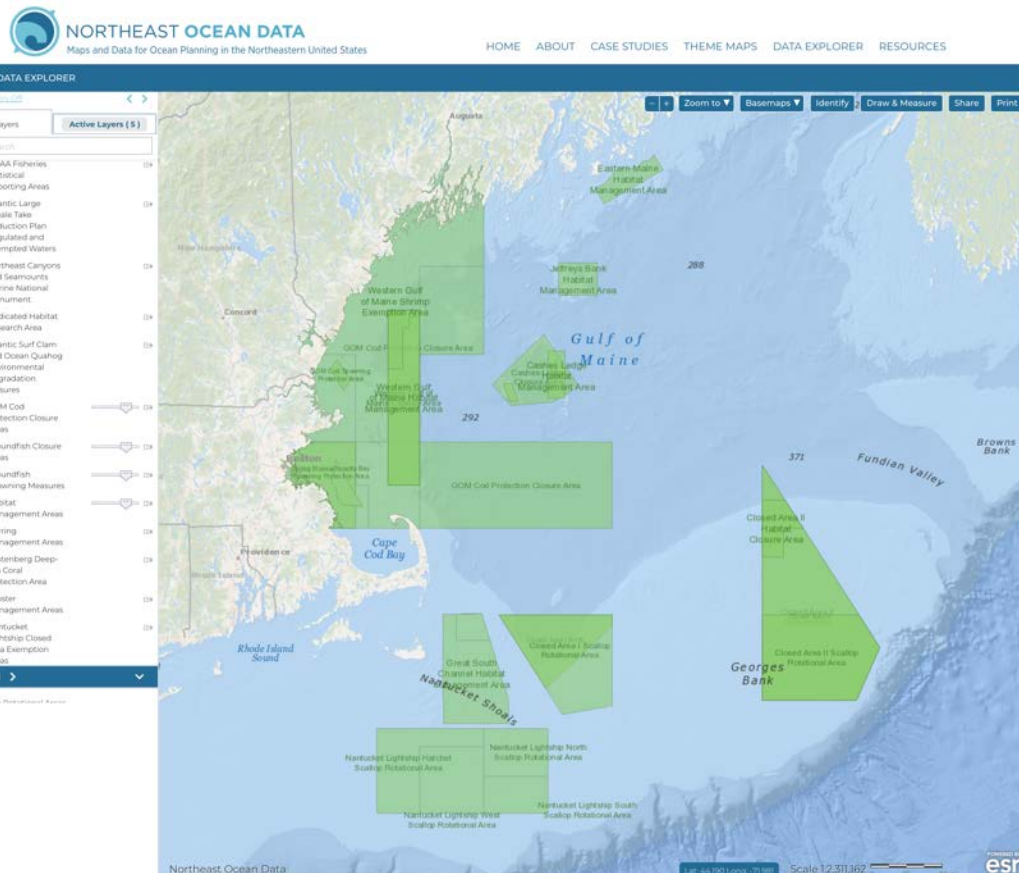
Updating Commercial Fisheries Data on the Northeast and Mid-Atlantic Ocean Data Portals

Fisheries Data Currently on the Portals

1. Fisheries Management Areas
2. VTR-based “Communities at Sea”
3. VMS-based fishing and transit
4. AIS-based transit

Updating Commercial Fisheries Data on the Northeast and Mid-Atlantic Ocean Data Portals

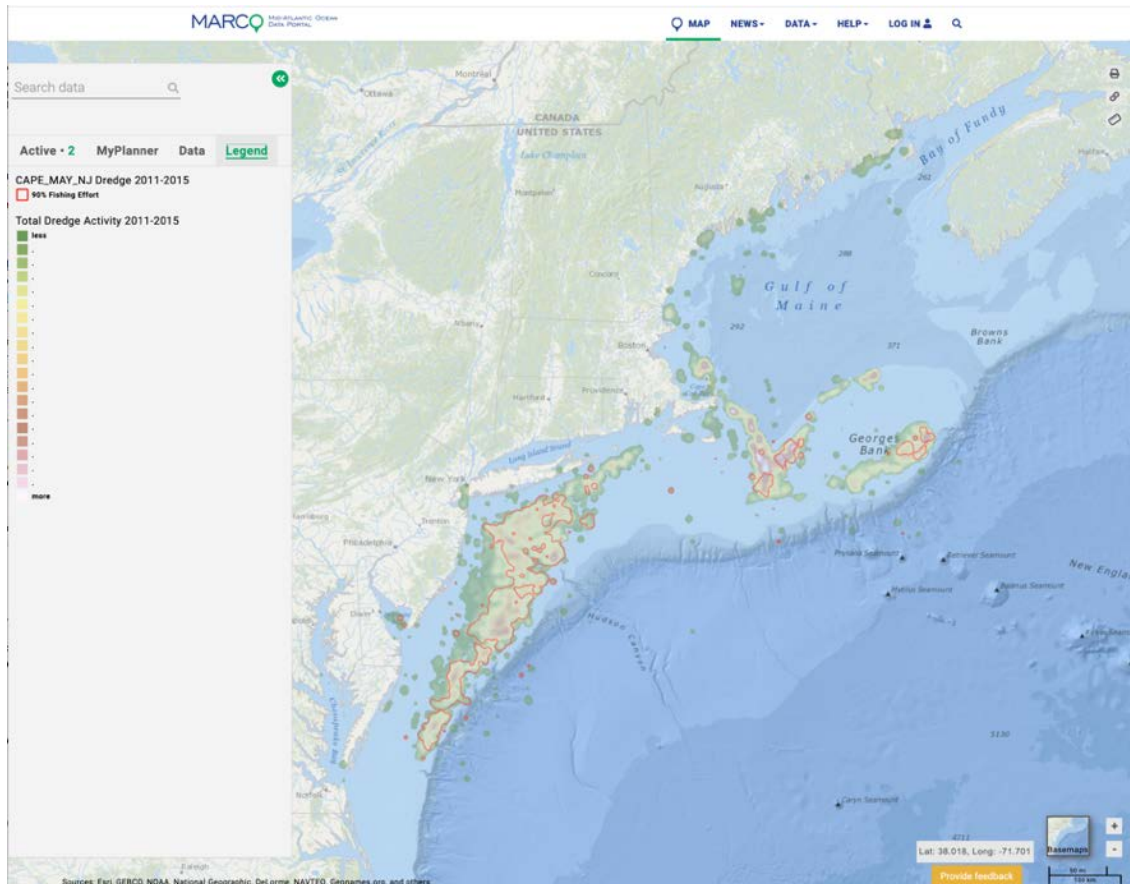
1. Fisheries Management Areas



- Current statistical reporting areas, closures, rotational areas, and habitat management areas
- From and updated by NMFS
- More detailed lobster management areas layers in development

Updating Commercial Fisheries Data on the Northeast and Mid-Atlantic Ocean Data Portals

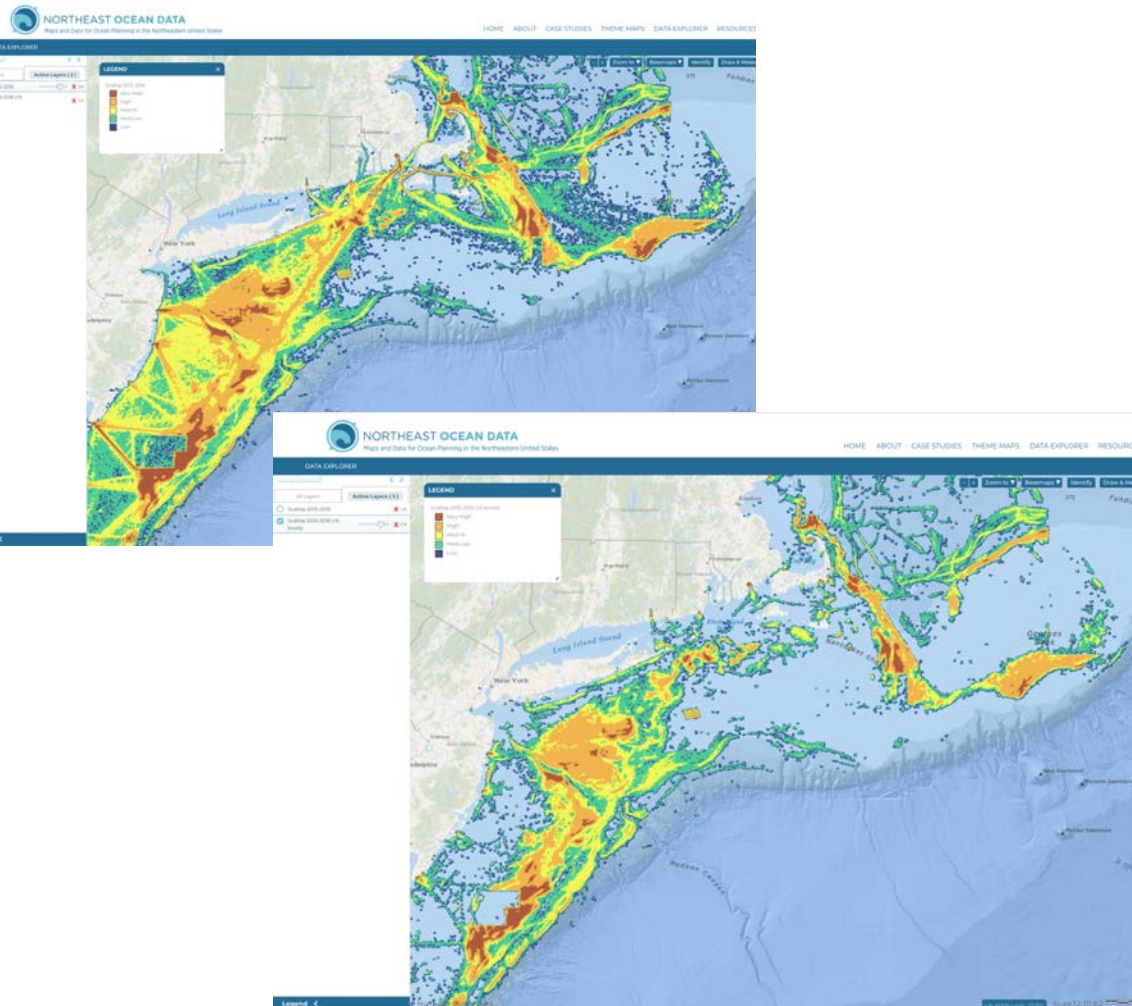
2. VTR-based “Communities at Sea”



- 1996-2015
- Effort – days at sea
- By gear
 - Bottom trawl (< and > 65')
 - Dredge
 - Gillnet
 - Longline
 - Pots and traps
- Overall density map for 5-year time period
- Area where 90% of effort occurs by port/gear type

Updating Commercial Fisheries Data on the Northeast and Mid-Atlantic Ocean Data Portals

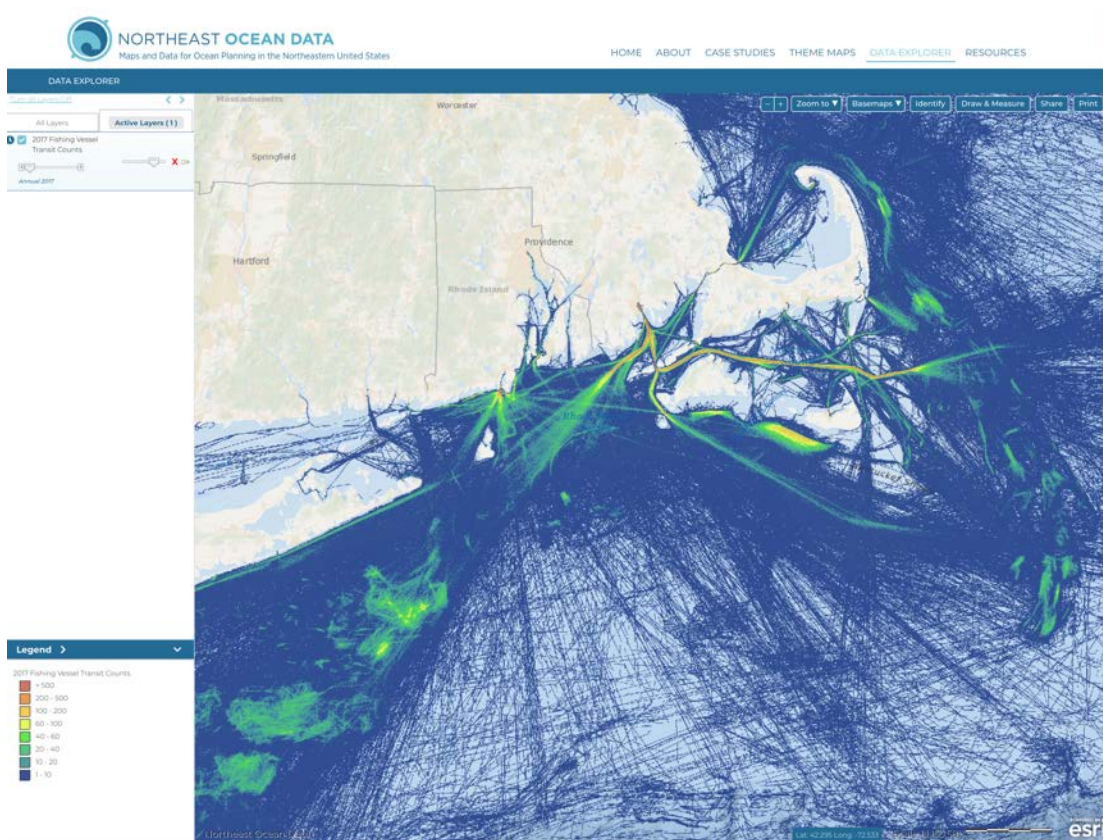
3. VMS-based fishing and transit



- 2006-2016 (depending on fishery)
- Separate maps for:
 - Northeast multispecies
 - Monkfish
 - Scallops
 - Surfclam/ocean quahog
 - Pelagics (herring, mackerel, and squid)
 - Herring
 - Squid
- All activity and activity over industry defined transit speed threshold

Updating Commercial Fisheries Data on the Northeast and Mid-Atlantic Ocean Data Portals

4. AIS-based transit



- 2015-2017 on Portals
- 2018-2019 being added shortly
- Monthly data/patterns available via time slider
- Known limitations around AIS usage
- Not fishery or gear specific

Updating Commercial Fisheries Data on the Northeast and Mid-Atlantic Ocean Data Portals

Currently No Data For:

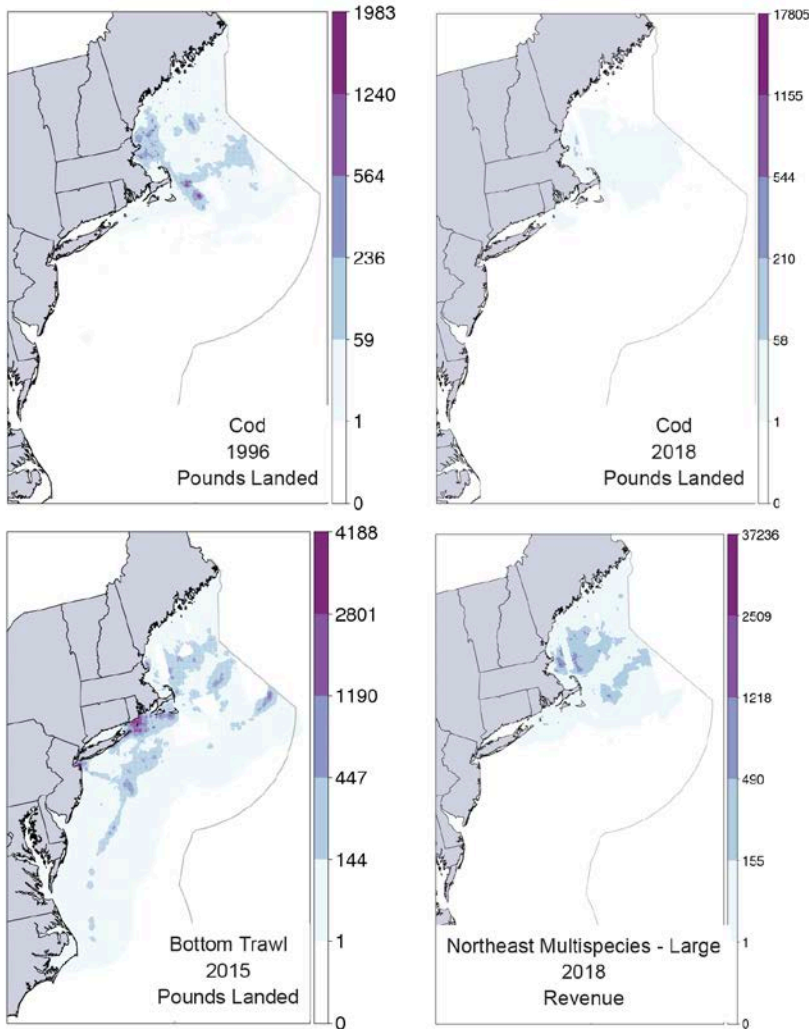
- Lobster (near term potential to integrate ME DMR and MA DMF data; also potential to use VTRs)
- Recreational fisheries (near term potential provide products for party and charter vessels from VTRs)

Also, Considering Adding:

- Northeast Fisheries Science Center “Fishing Footprints”

Updating Commercial Fisheries Data on the Northeast and Mid-Atlantic Ocean Data Portals

NEFSC “Fishing Footprints”



- 1996-2018
- VTR-based
- Pounds landed; Revenue
- By species, gear, or FMP
- Potential for year aggregations

Updating Commercial Fisheries Data on the Northeast and Mid-Atlantic Ocean Data Portals

Project Partners:

- **Responsible Offshore Development Alliance (RODA)** – coalition of fishing industry associations and fishing companies with an interest in improving the compatibility of new offshore development with their businesses.
- **Northeast Regional Ocean Council (NROC)** - voluntary forum for states, federal agencies, and other regional organizations formed by the New England governors in 2005
- **Mid-Atlantic Regional Council on the Ocean (MARCO)** - state partnership to address shared regional priorities and provide a collective voice formed by the Governors of New York, New Jersey, Delaware, Maryland and Virginia in 2009

Updating Commercial Fisheries Data on the Northeast and Mid-Atlantic Ocean Data Portals

Funding:

Federal appropriation through NOAA to NROC and MARCO for regional data sharing for management decisions

Duration:

January through September 2020

Project Outcomes:

- Guidance for and updated maps on the NE and Mid-A portals with new years, additional products, and understanding of current and potential uses
- Upfront and consistent industry engagement on data product development and use via RODA convened focus groups

Updating Commercial Fisheries Data on the Northeast and Mid-Atlantic Ocean Data Portals

Industry's Role

- Provide feedback to RODA
 - Specific to your fishery and/or gear type
 - Attend any working group or other meeting where RODA is discussing the data portals, e.g. Council meetings or Council AP meetings
 - Contact Fiona (Fiona@rodafisheries.org)

Updating Commercial Fisheries Data on the Northeast and Mid-Atlantic Ocean Data Portals

- Which of the following is important to the fishery(s) you operate in?
 - Adding additional years to the fisheries data? If so, what years?
 - Add more fisheries, even if they are merged across fisheries?
 - Add other data sets that are more appropriate to show fishing spatial activity? (please list below?)
 - Change the speed used to identify vessels actively fishing (in VMS or AIS)?
 - Consider additional methods for identifying fishing and transit areas?
 - Consider other ways of aggregating existing data to show important operations to the fishery (e.g. seasonal, annual, multiple years, or some other time period)?
 - Add additional important management or regulatory spatial areas?
 - Add other maps that would show things that are important to your fishery?
 - Change how transiting vessels are identified?
 - Include non-map information to provide better context to spatial depictions?
 - Other?