

CATT PROGRESS REPORT

January 2013

Primary Goals of Groundfish Closed Area Management Adopted Nov 2012

- 1. Enhance groundfish fishery productivity**
- 2. Maximize societal net benefits from the groundfish stocks while addressing current management needs**

Objectives for Groundfish Closed Area Management

1. Improved spawning protection; including protection of localized spawning contingents or sub-populations of stocks
2. Improved protection of critical groundfish habitats
3. Improved refuge for critical life history stages
4. Improved access to both the use and non-use benefits arising from closed area management across gear types, fisheries, and groups. These benefits may arise from areas designed to address other three groundfish closed area objectives.

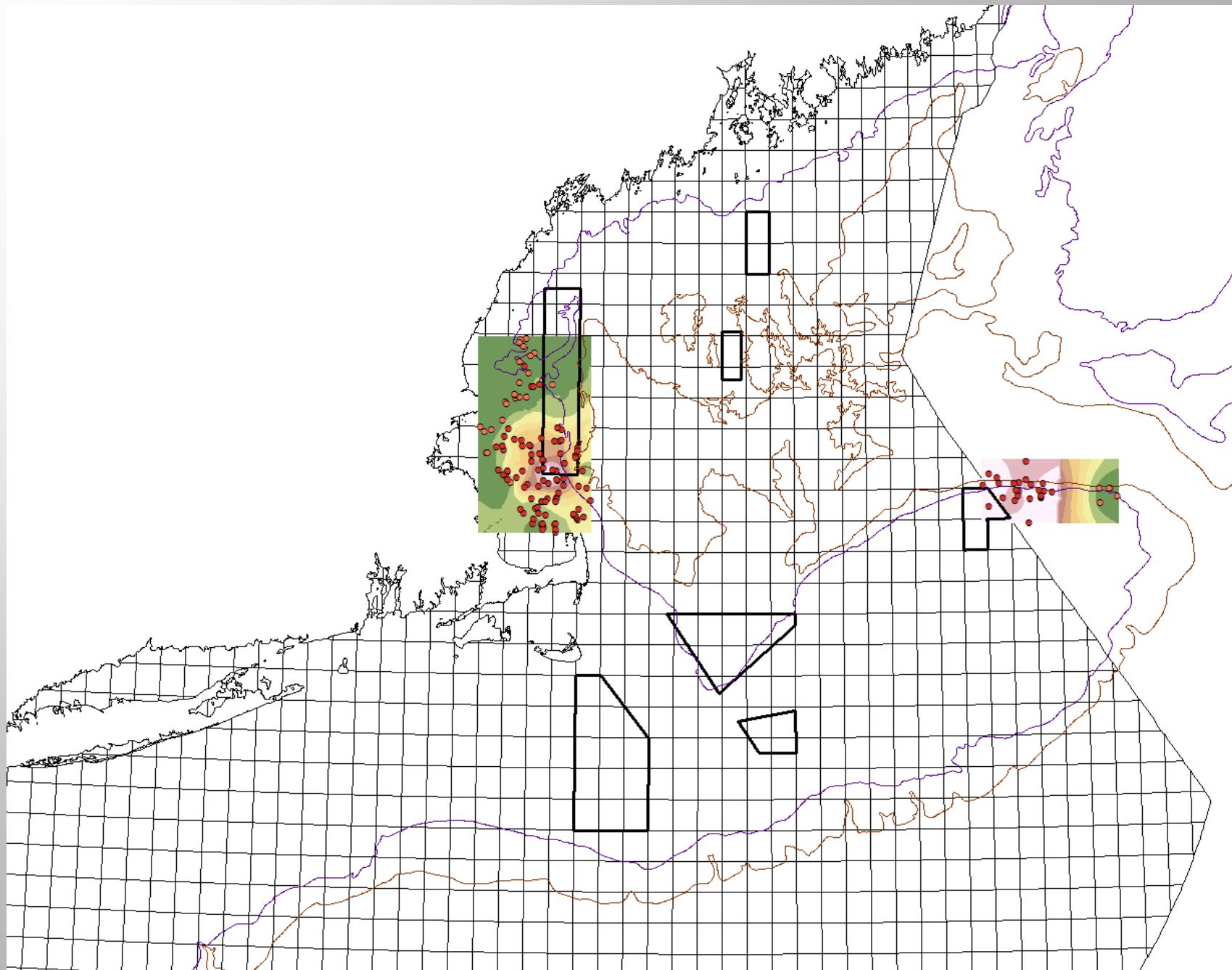
CATT Analyses

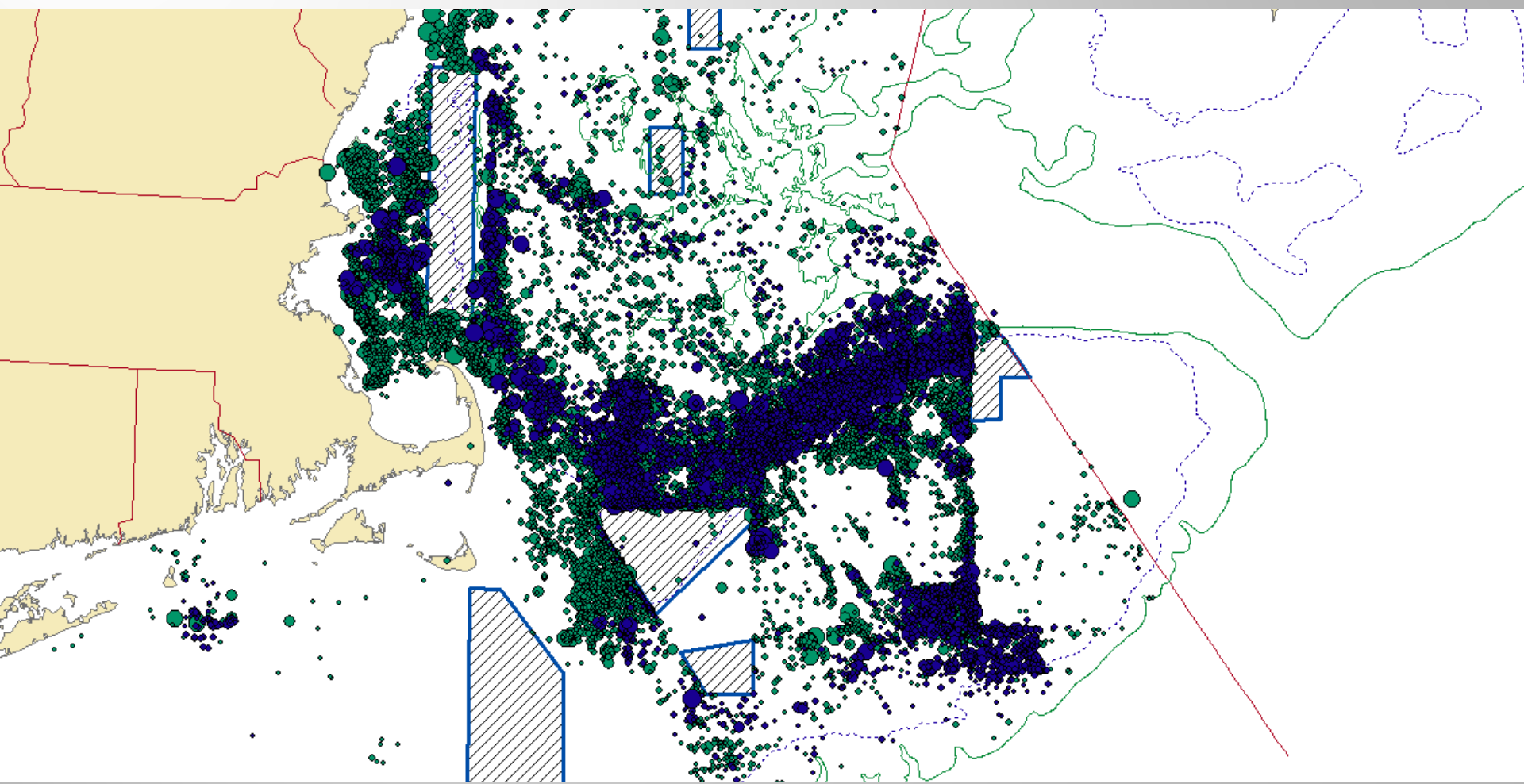
▣ Relevant case studies

- Intended effect
- Actual effects

▣ Geographic cluster analysis

- State and Federal surveys
- Observer data





CATT Analyses

- ▣ Geographical modeling of juvenile groundfish distribution: depth, temperature, substrate
- ▣ Fishery net revenue maps
- ▣ Classify movement and spawning from tagging data

Status

- ▣ Technically complex
- ▣ Need time
- ▣ Expert consultation

Management policy

- ▣ **Automatic sunset provision**
 - Pre-determined years
 - Triggered events ($B > B_{\text{target}}$)
- ▣ **Spawning closure application**
 - Commercial fishermen
 - Recreational fishermen
- ▣ **Habitat closures**
 - Bottom tending mobile gears
 - Gill nets
 - Long lines