

Draft Northeast Ocean Plan

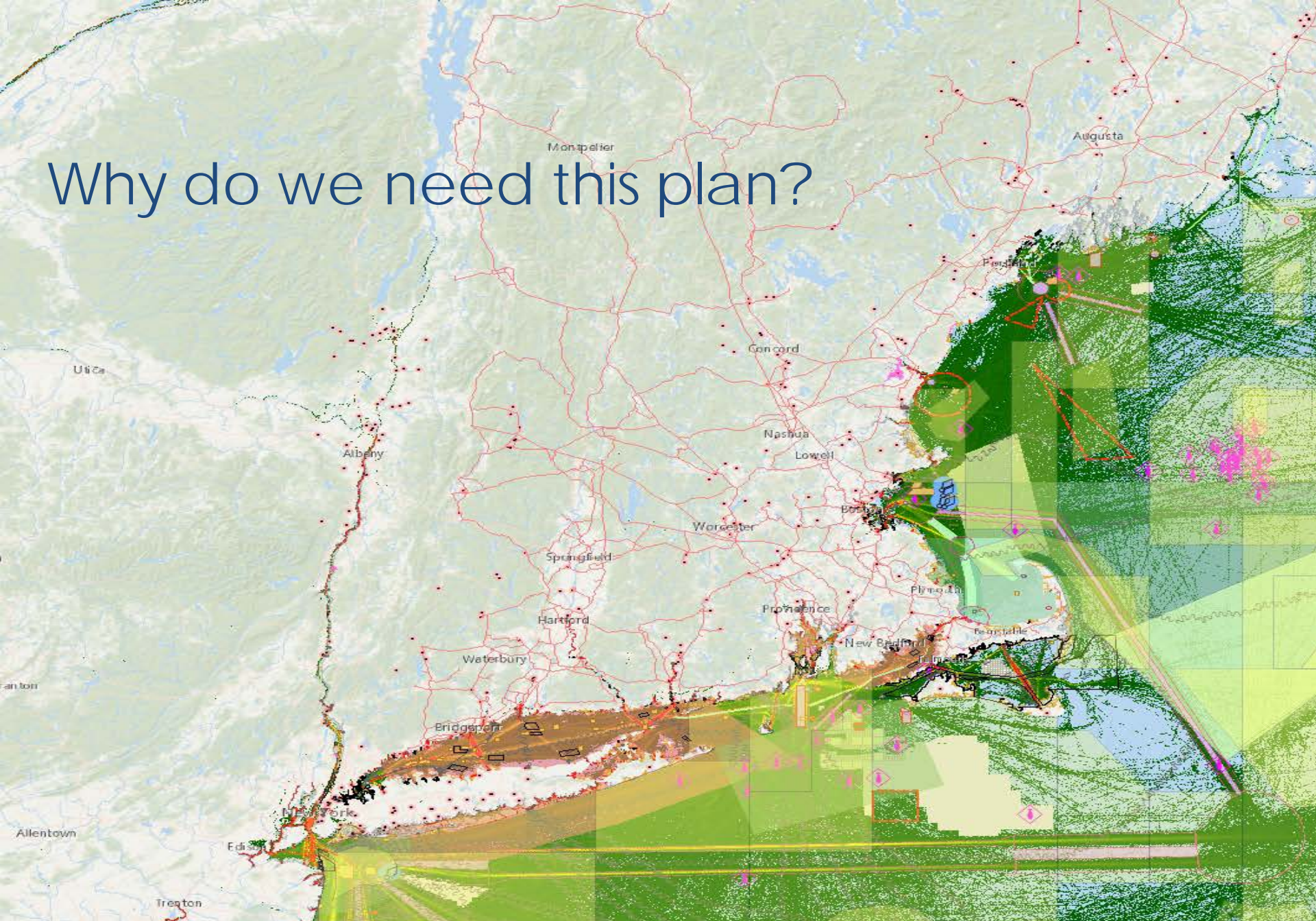
#6a

Available at - <http://neoceanplanning.org/plan/>

Public Meetings
June 2016



Why do we need this plan?



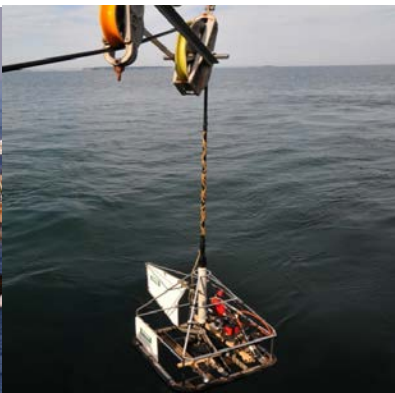


What does the
Northeast
Ocean Plan do?



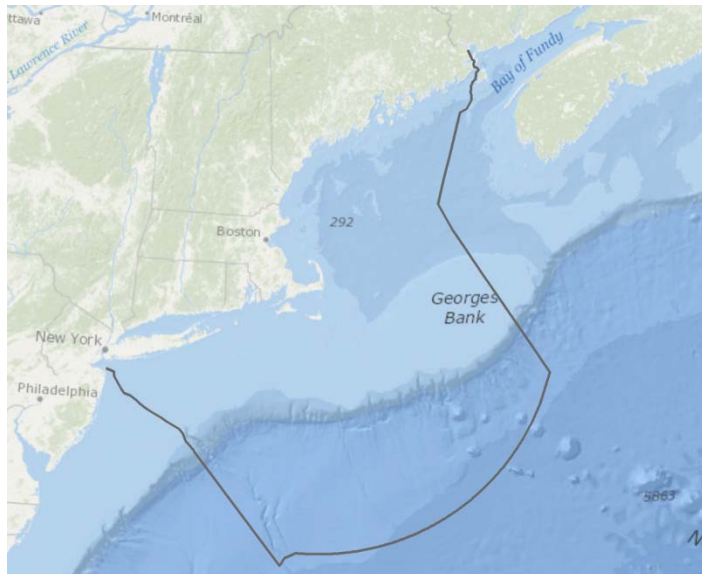
What Does the Northeast Ocean Plan Do?

- Provides unprecedented amount of ocean information
- Commits federal agencies to use information in their decisions
- Helps identify conflicts and compatibility on the water
- Encourages government to work better together and engage ocean users
- Identifies future priority science and research needs



Northeast Regional Planning Body

- Six New England states
- Six federally-recognized tribes
- Nine federal agencies
- New England Fishery Management Council
- Two ex-officio members, NY and Canada



Northeast Ocean Plan goals

1. Healthy ocean and coastal ecosystems
2. Effective decision-making
3. Compatibility among past, current and future ocean uses

An underwater photograph showing a large, green, leafy seaweed plant. The seaweed has long, narrow, wavy blades that are densely packed with small, dark spots, likely representing individual cells or small organisms. The plant is set against a bright, blue background of water, with sunlight filtering through from the top, creating a shimmering, dappled light effect. The overall scene is serene and natural.

How was the
Northeast
Ocean Plan
developed?

NORTHEAST OCEAN DATA PORTAL

NORTHEAST OCEAN DATA

Maps and data for ocean planning in the northeastern United States

[HOME](#)

[MAPS](#) ▾

[DATA](#) ▾

[ABOUT](#) ▾




DATA EXPLORER

Interact with any combination of data in the Data Explorer — Human Activities, Marine Life, and Environment

Human Activities

Marine Life

Environment



AQUACULTURE
Interactive Map



COMMERCIAL FISHING
Interactive Map



MAMMALS & TURTLES
Interactive Map



FISH
Interactive Map




BATHYMETRY
Data Resources & Maps



CULTURE
Interactive Map



ENERGY & INFRASTRUCTURE
Interactive Map



BIRDS
Interactive Map




EELGRASS
Data Resources & Interactive Map



WATER QUALITY
Interactive Map




MARINE TRANSPORTATION
Interactive Map



RECREATION
Interactive Map



HABITAT
Interactive Map



HABITAT CLASSIFICATION
Story Map



RESTORATION
Interactive Map

OUTREACH + ENGAGEMENT

Regional Stakeholder forums + workshops

3–6 weeks before each
RPB meeting

Focus on upcoming RPB
decisions

Subject specific projects + targeted outreach + work groups

Cumulatively reached
thousands of people across
many issue areas

Expert/scientific review of
methods, products

State public meetings + advisory groups

Interactive and informal
Throughout New England

Website + social media + eblasts

Calendar and RPB
updates

Project reports, meeting
summaries, other
products

Existing meetings + events

Leveraged existing
opportunities to reach
stakeholders

Various topics, throughout
New England



OCEAN RESOURCES & ACTIVITIES



MARINE LIFE &
HABITAT



NATIONAL
SECURITY



AQUACULTURE



RESTORATION



COMMERCIAL &
RECREATIONAL
FISHING



OFFSHORE SAND
RESOURCES



CULTURAL
RESOURCES




RECREATION



MARINE
TRANSPORTATION



ENERGY &
INFRASTRUCTURE

A sandy path leads through tall green dune grasses towards a beach. In the background, there are people, colorful beach umbrellas, and a yellow inflatable ring in the blue ocean under a clear sky.

What are the
different parts
of the plan?

- 1 Northeast region and need for ocean planning
- 2 Plan process and development of Data Portal
- 3 Using plan data in regulatory and management decisions across 10 ocean management topics
- 4 Plan implementation
- 5 Future science and research priorities

USING PLAN DATA TO INFORM DECISIONS

Plan includes Federal agency actions to update and use Plan data and information in regulatory and management decisions within existing authorities.

NORTHEAST OCEAN DATA

Maps and data for ocean planning in the northeastern United States

[HOME](#)

[MAPS](#) ▾

[DATA](#) ▾

[ABOUT](#) ▾



DATA EXPLORER

Interact with any combination of data in the Data Explorer Human Activities, Marine Life, and Environment

Human Activities



AQUACULTURE
Interactive Map



COMMERCIAL FISHING
Interactive Map



CULTURE
Interactive Map



ENERGY & INFRASTRUCTURE
Interactive Map



MARINE TRANSPORTATION
Interactive Map



RECREATION
Interactive Map

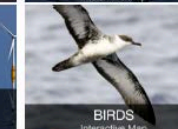


NATIONAL SECURITY
Interactive Map

Marine Life



MAMMALS & TURTLES
Interactive Map



BIRDS
Interactive Map



HABITAT
Interactive Map



FISH
Interactive Map



EELGRASS
Data Resources & Interactive Map



HABITAT CLASSIFICATION
Story Map

Environment



BATHYMETRY
Data Resources & Maps

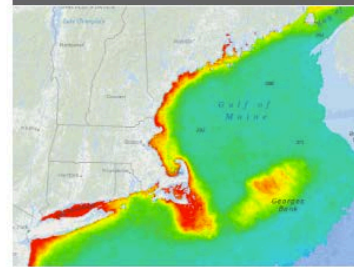


WATER QUALITY
Interactive Map



RESTORATION
Interactive Map

FEATURED MAP



NEWS

[Redesigned Home Page Reflects New Data Themes in Support of the Upcoming Draft Northeast Ocean Plan](#)

March 17, 2016

[New Map Shows Restoration Projects that Require Funding in New England](#)

March 17, 2016

[Updated Maps of Physical and Biological Habitat Data](#)

Plan Describes Top Ten Primary Ocean Resources and Activities

1. Overview of **importance** of each ocean resource or activity to ocean management
2. **Regulatory and management landscape** of that resource/activity
3. Peer-reviewed **maps and data** available on portal
4. Regulatory and management **actions** identified by RPB agencies
 - ✓ Maintain, update and develop additional data for the Portal
 - ✓ Inform regulatory/environmental review and management decisions
 - ✓ Identify potentially affected stakeholders and resources
 - ✓ Enhance interagency coordination

Ocean Resources & Activities





MARINE LIFE & HABITAT

Marine Life & Habitat

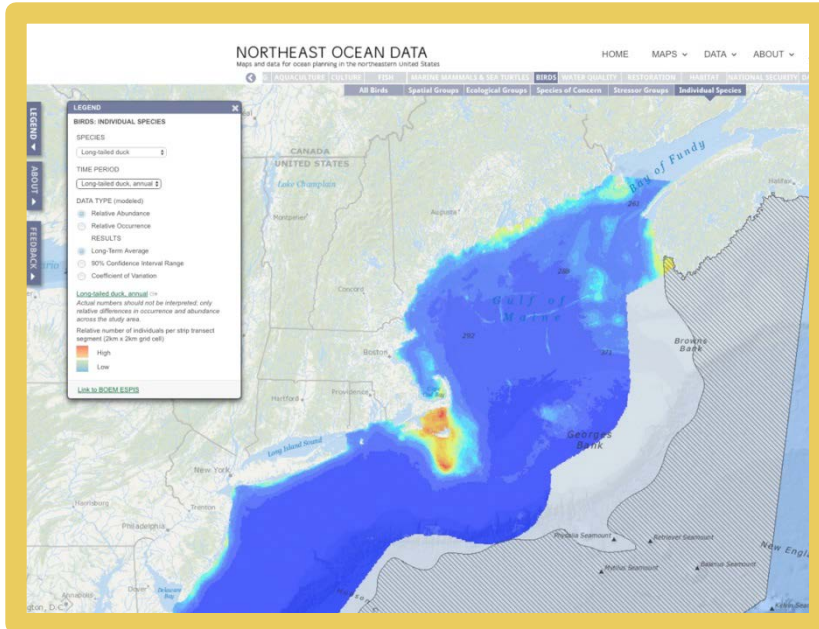
Describes how we developed an unprecedented library of regional data products characterizing marine life and habitat, and includes:

- Maps of species
- Maps of habitat types
- Draft maps of species groupings developed to assist decision-making



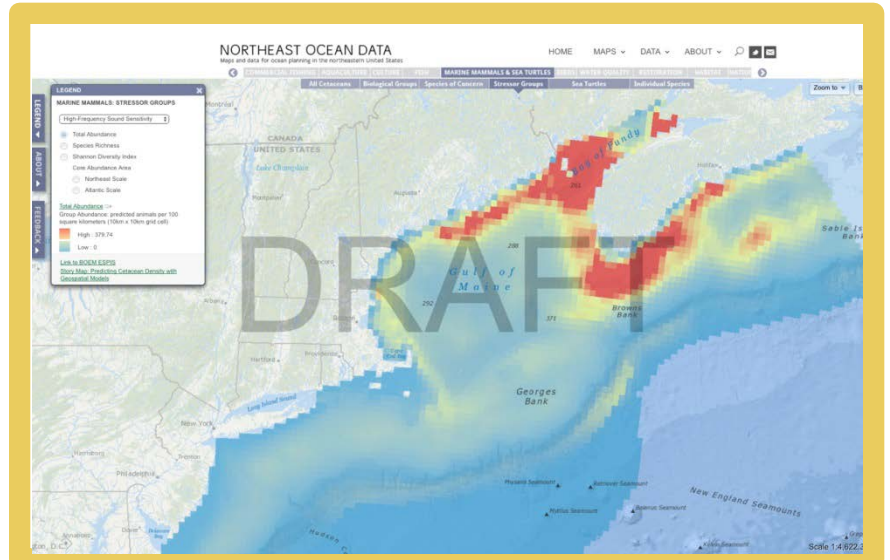
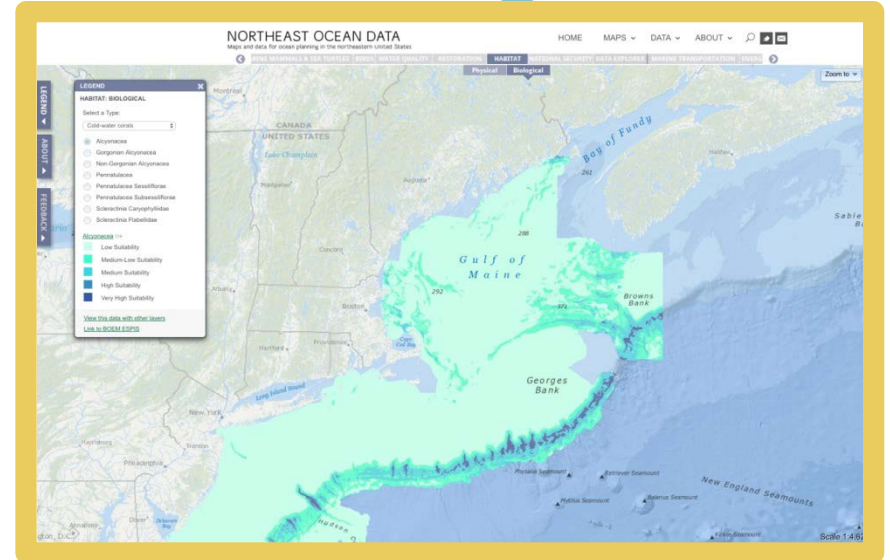
MARINE LIFE & HABITAT

Corals



Long-tailed duck: predicted annual relative abundance

Mammals sensitive to high frequency sound





MARINE LIFE & HABITAT

Marine Life & Habitat

Defines Important Ecological Areas as habitat areas and species, guilds, or communities critical to ecosystem function, recovery, and resilience. They are further divided by five components:

- Areas of high productivity
- Areas of high biodiversity
- Areas of high species abundance
- Areas of vulnerable marine resources
- Areas of rare marine resources



OVERVIEW ACTIONS

ML-1 Update marine life data

ML-2 Update habitat data

ML-3 Identify opportunities to update marine life and habitat data every five years

ML-4 Advance the mapping of Important Ecological Areas



OVERVIEW ACTIONS

ML-5 Use marine life and habitat data as key inputs to monitor ecosystem health

ML-6 Use marine life and habitat data to inform applicable review processes under federal environmental and regulatory laws

ML-7 Use marine life and habitat data to inform responsibilities within managed areas

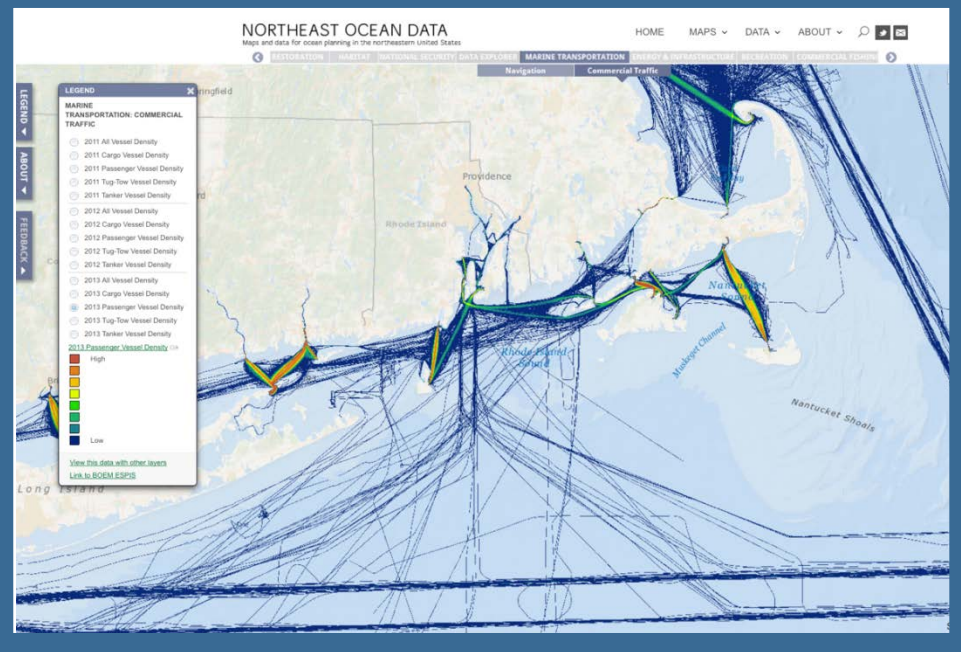
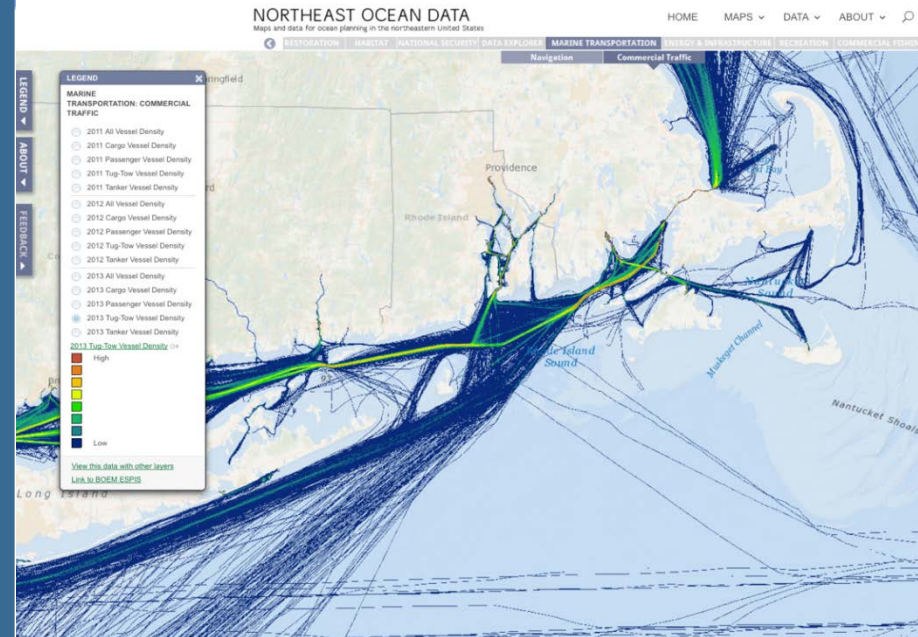
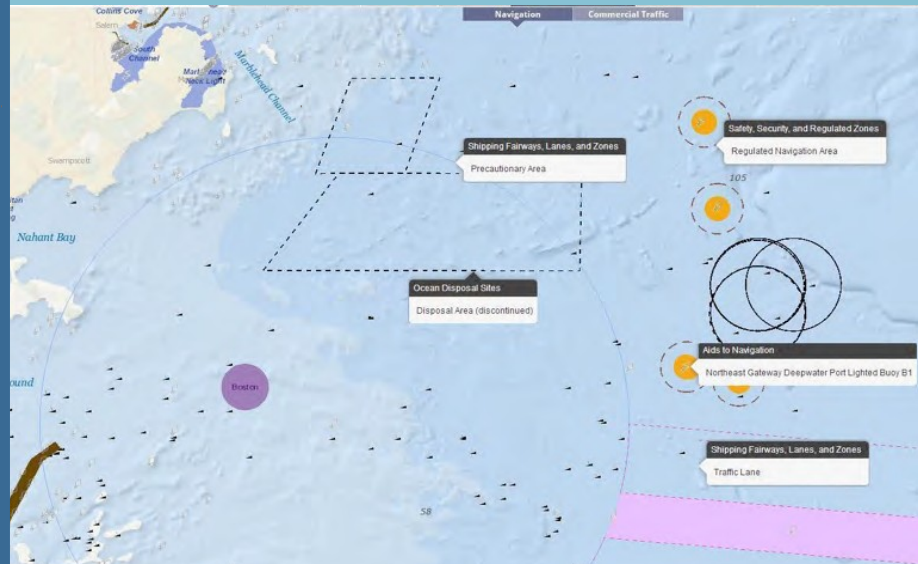
ML-8 Use marine life and habitat data to inform other management activities



MARINE TRANSPORTATION



Approach to Boston Harbor



Passenger vessels

Tug Tow vessels



OVERVIEW ACTIONS

- MT-1 Maintain existing maps and data on the Portal
- MT-2 Provide additional data through new analyses
- MT-3 Use the Portal and Plan to inform regular operations and management of the MTS
- MT-4 Use the Portal and Plan to identify potential conflicts, impacts and potentially affected maritime stakeholders during permitting and leasing for new proposed activities
- MT-5 Use the Plan to inform dredging and federal navigation projects
- MT-6 Continue outreach to maritime stakeholders to understand current trends and the potential effects of new activities to the MTS

COMMERCIAL &
RECREATIONAL
FISHING



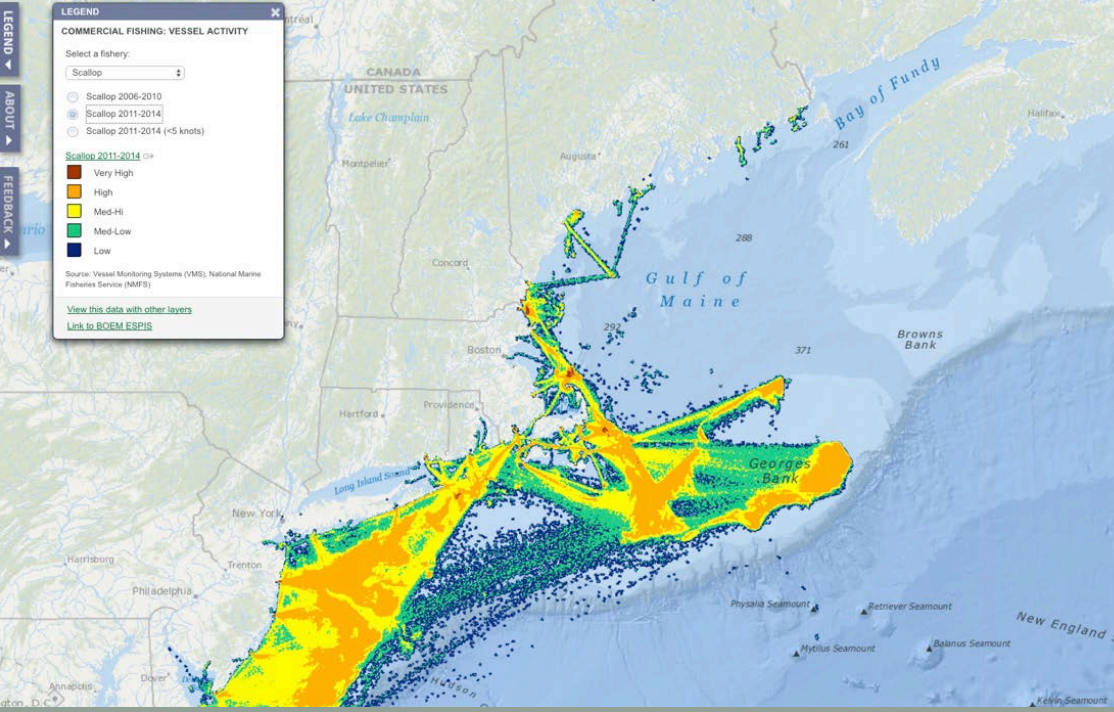
NORTHEAST OCEAN DATA

Maps and data for ocean planning in the northeastern United States

HOME MAPS DATA ABOUT

MINI TRANSPORTATION ENERGY & INFRASTRUCTURE RECREATION COMMERCIAL FISHING AQUACULTURE CULTURE FISH MARINE MAMMALS & SEA TURTLES

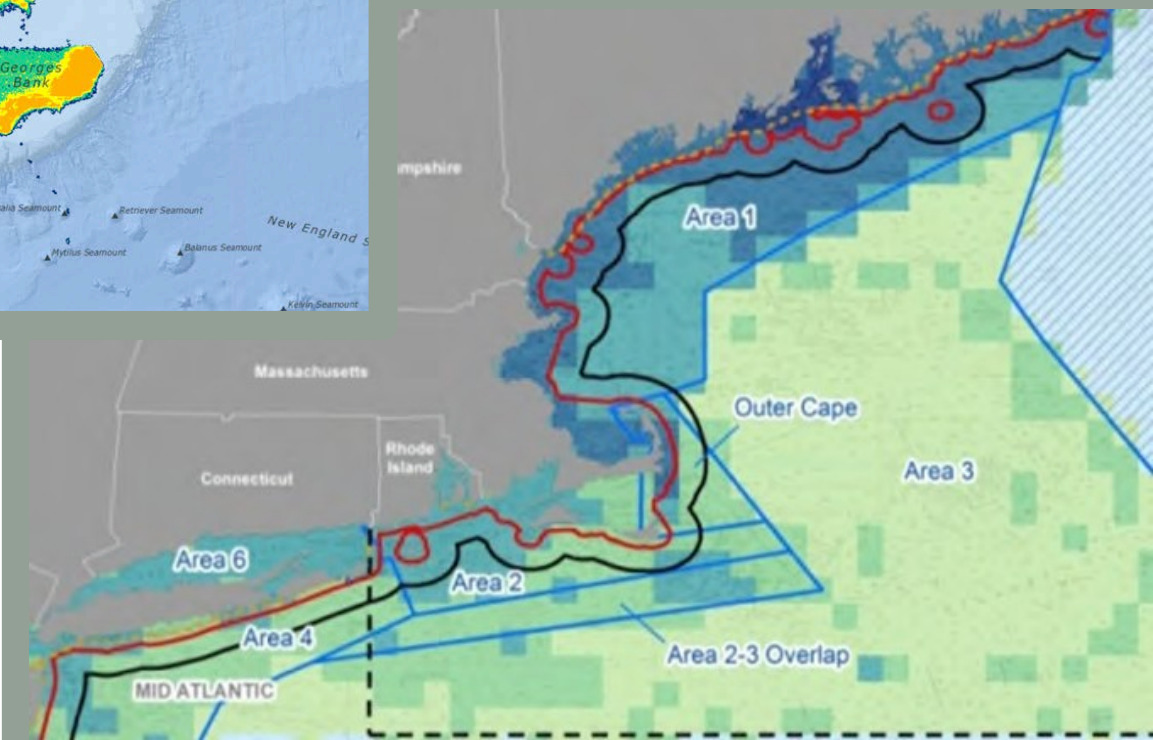
Vessel Activity Management Areas



NORTHEAST OCEAN PLAN

Lobster Trap End Line Density

All VMS Scallop Vessels 2011-2014





COMMERCIAL &
RECREATIONAL FISHING



NORTHEAST OCEAN PLAN

OVERVIEW ACTIONS

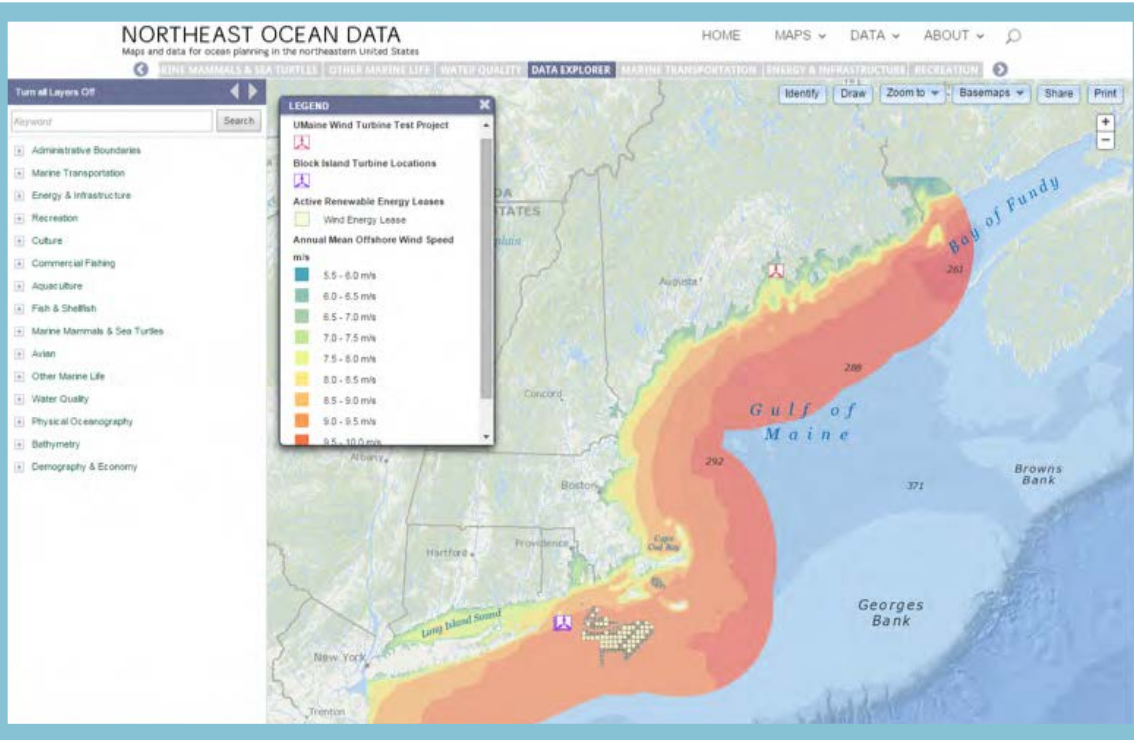
- CF-1 Maintain existing maps and data on the portal
- CF-2 Develop additional regional maps and data of commercial and recreational fisheries
- CF-3 Inform regulatory and environmental reviews of agency actions for their potential impacts to commercial and recreational fisheries
- CF-4 Identify potentially affected commercial fishing stakeholders



NORTHEAST OCEANPAN



ENERGY AND INFRASTRUCTURE



Wind resources in the Northeast U.S. from a 2010 DOE study.

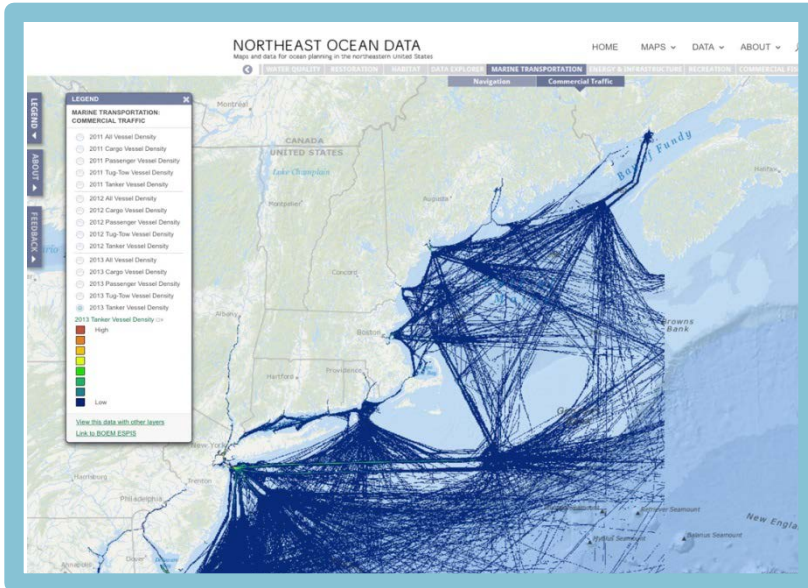


Renewable energy planning areas.

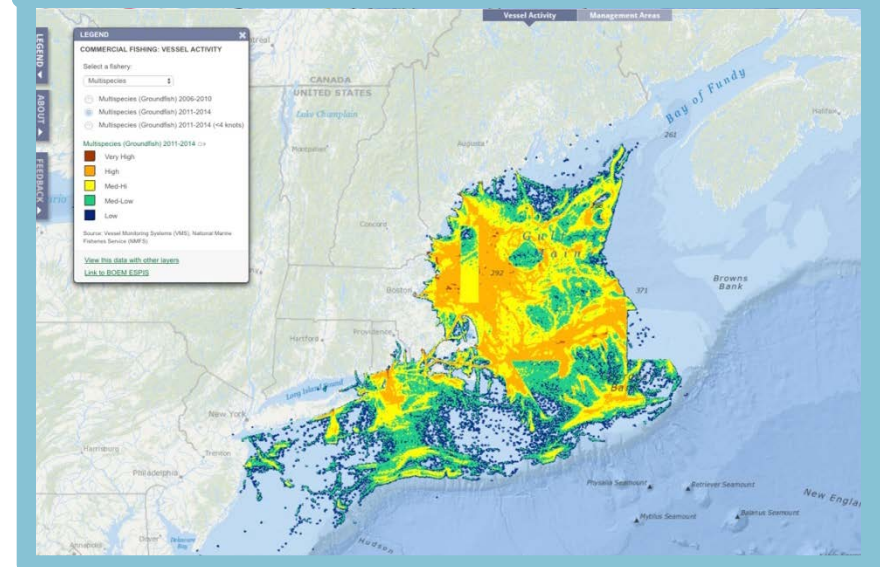
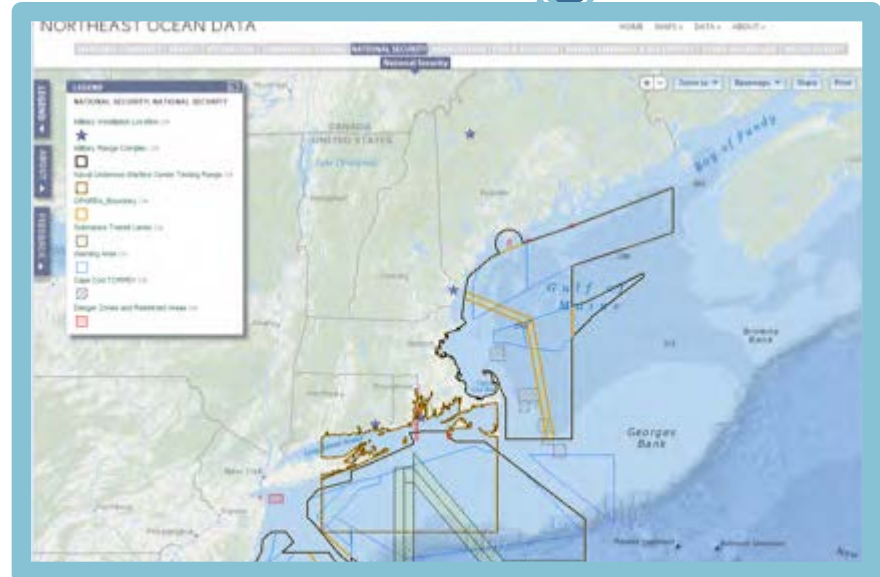


ENERGY &
INFRASTRUCTURE

National Security Use Areas



Tanker Vessel Density



Multispecies Fishing Vessel Density



ENERGY &
INFRASTRUCTURE

OVERVIEW ACTIONS



NORTHEAST OCEAN PLAN

EI-1 Maintain existing maps and data on the Portal

EI-2 Provide additional regional data related to energy and infrastructure permitting when available

EI-3 Inform commercial leasing for offshore renewable energy development



ENERGY &
INFRASTRUCTURE

OVERVIEW ACTIONS



NORTHEAST OCEAN PLAN

5
EI-4 Incorporate Plan maps and data into environmental reviews associated with new offshore energy or submarine cable proposals

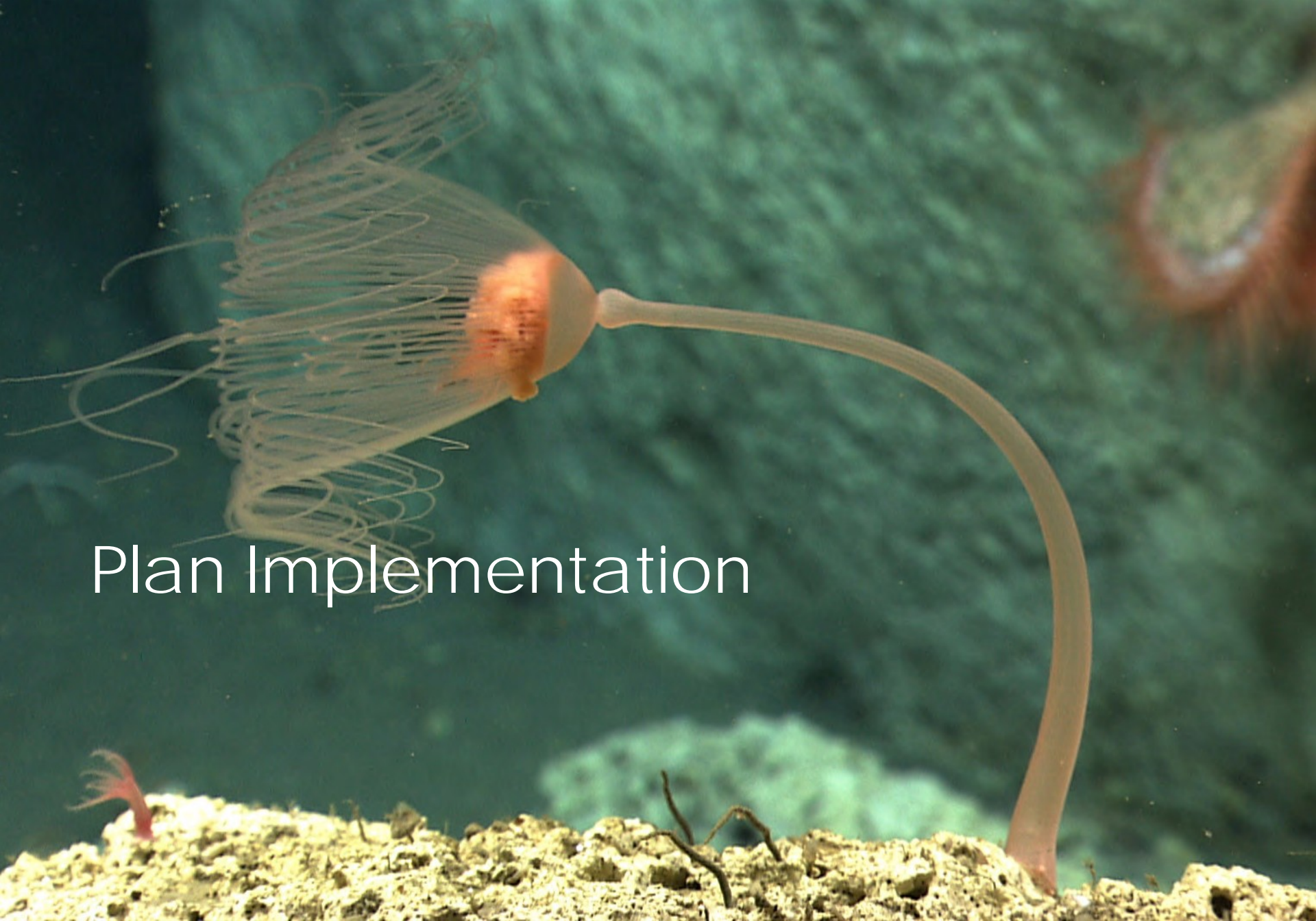
EI-5 Identify and notify potentially affected stakeholders

EI-6 Improve outreach to industry and stakeholders related to renewable energy development

EI-7 Ensure the plan and portal are used by agencies and project proponents

EI-8 Inform research and development

EI-9 Enhance intergovernmental coordination related to offshore energy development



Plan Implementation

PLAN IMPLEMENTATION

1. Intergovernmental Coordination
2. Plan Administration
 - Portal Maintenance
3. Monitoring and Evaluation of the Plan and ecosystem health

EARLY AGENCY COORDINATION

Entities that participate in early agency coordination in the Northeast typically include (or should include) some combination of the following:

- DOI (including BOEM, USFWS, NPS, USGS)
- FERC
- USACE
- NOAA (including NMFS)
- USEPA
- DHS (including USCG and FEMA)
- Navy
- DOT (MARAD)
- NEFMC and Mid-Atlantic Fishery Management Council (depending on location)
- State agencies (permitting, wildlife, and fisheries agencies, CZM programs, SHPO). Fisheries agencies may also coordinate through NEFMC, MAFMC, or ASMFC.
- Atlantic States Marine Fisheries Commission
- Federally-recognized tribes

PLAN IMPLEMENTATION

Best practices provide flexible but consistent guidance to help enhance value of agency coordination by supporting:

- Agreement across agencies to use relevant information from portal, plan, stakeholders, other sources early on,
- Initial understanding of proposed project and broad understanding of issues,
- Clear and efficient direction for the applicant,
- Informed and engaged ocean stakeholders, and
- Coordinated federal, state, tribal review as appropriate.

SCIENCE AND RESEARCH PRIORITIES

1. Improve understanding of marine life and habitats
2. Improve understanding of tribal cultural resources
3. Improve understanding of human activities, coastal communities, socioeconomics, and interactions between uses
4. Characterize the vulnerability of marine resources to specific stressors
5. Characterize changing environmental conditions, particularly resulting from climate change, and characterize resulting impacts to existing resources and uses
6. Advance ecosystem-based management (EBM) by building on the previous priorities and also including cumulative impacts and ecosystem services

How does the plan
address the goals?



1. Healthy ocean and coastal ecosystems

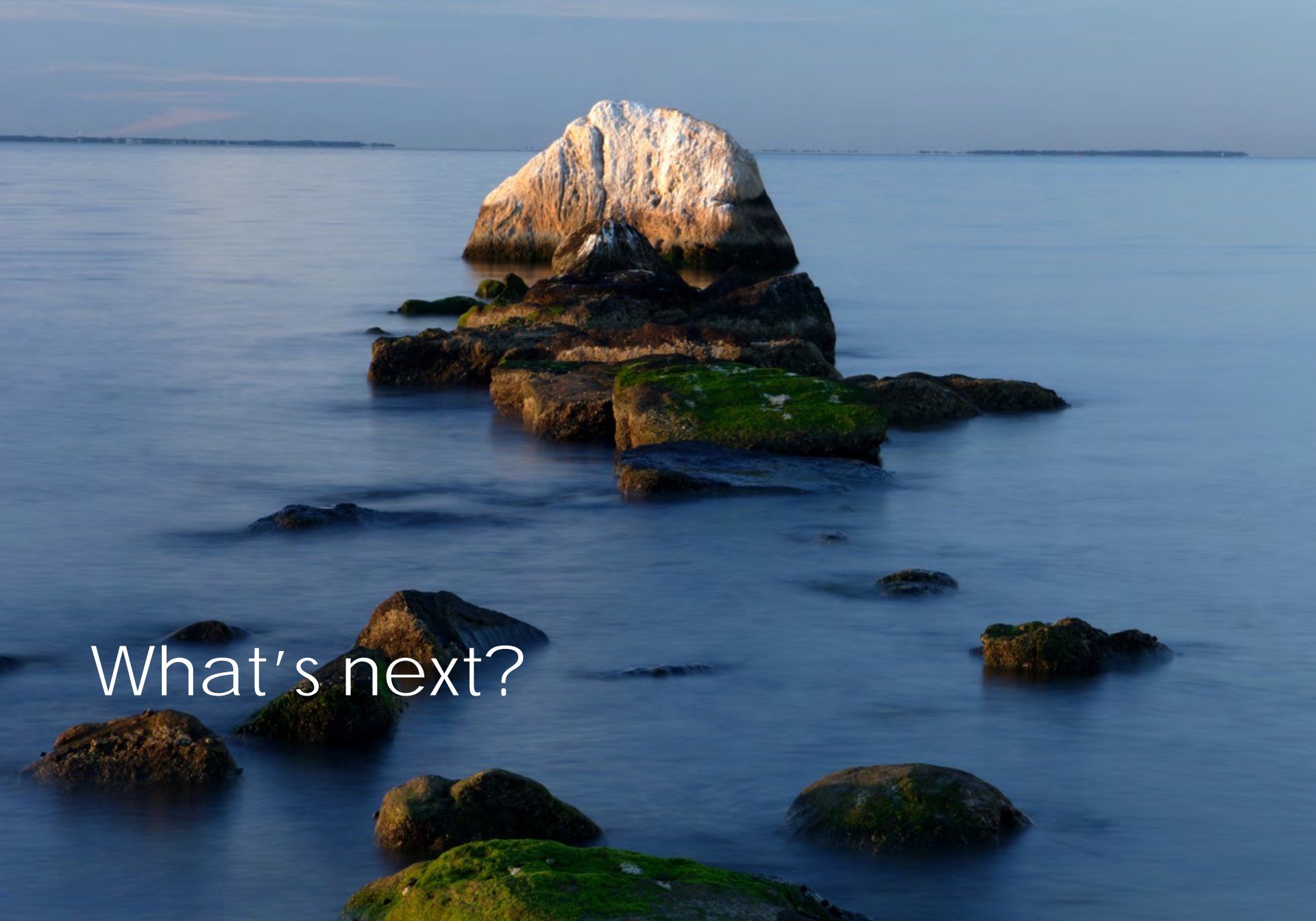
- Agency commitment to use an unprecedented, scientifically- and expert-developed amount of marine life, habitat, and human use data
- Development of an IEA Framework and commitments to advance it
- Commitment to develop indicators of ecosystem health, including the Ocean Health Index
- Identification of potential restoration projects that could advance a healthy ecosystem
- Identification of six science and research priorities

2. Effective decision-making

- Commitments to use the Portal in regulatory and management decisions
- Commitments to maintain and advance the Portal
- Best practices to enhance intergovernmental coordination
- Identify and engage stakeholders
- Continuation of the RPB as a regional forum for coordination

3. Compatibility among past, current and future ocean uses

- Discussion of potential interactions between uses and marine life (e.g., recreation, aquaculture, energy, sand)
- Commitment to use best practices and regional data to identify potentially affected stakeholders to further understand compatibility issues
- Pursue science and research priorities to advance compatibility, including better understanding resource vulnerability, use conflicts, important socioeconomic connections, cumulative impacts, and ecosystem services



What's next?

PUBLIC COMMENT

- Public comment period begins May 25th and will conclude on July 25th at 5pm
- Public comment will be collected via:
 - Public listening sessions
 - Comments submitted online at neooceanplanning.org/plan
 - Via email: comment@neooceanplanning.org
 - Comments submitted in writing to:
 - Betsy Nicholson, Northeast Regional Planning Body, 55 Great Republic Drive, Gloucester, MA 01930
- The RPB will submit revised plan to National Ocean Council for review and certification, at which point the plan will be in effect

PUBLIC COMMENT

Monday, June 6 – Rockland, ME: 5PM to 8PM
Wednesday, June 8 – Old Lyme, CT: 7PM – 9PM
Monday, June 13 – Gloucester, MA: 6PM-8:30PM
Tuesday, June 14 – Boston, MA: 2PM – 4:30PM
Wednesday, June 15 – New Bedford, MA: 6PM – 8:30PM
Monday, June 20 – Ellsworth, ME: 5PM – 8PM
Monday, June 27 – Portsmouth, NH: 6PM – 8:30PM
Wednesday, June 29 – Narragansett, RI: 6PM – 8:30PM
Thursday, June 30 – Portland, ME: 5PM – 8PM

Go to neoplan.org for details