

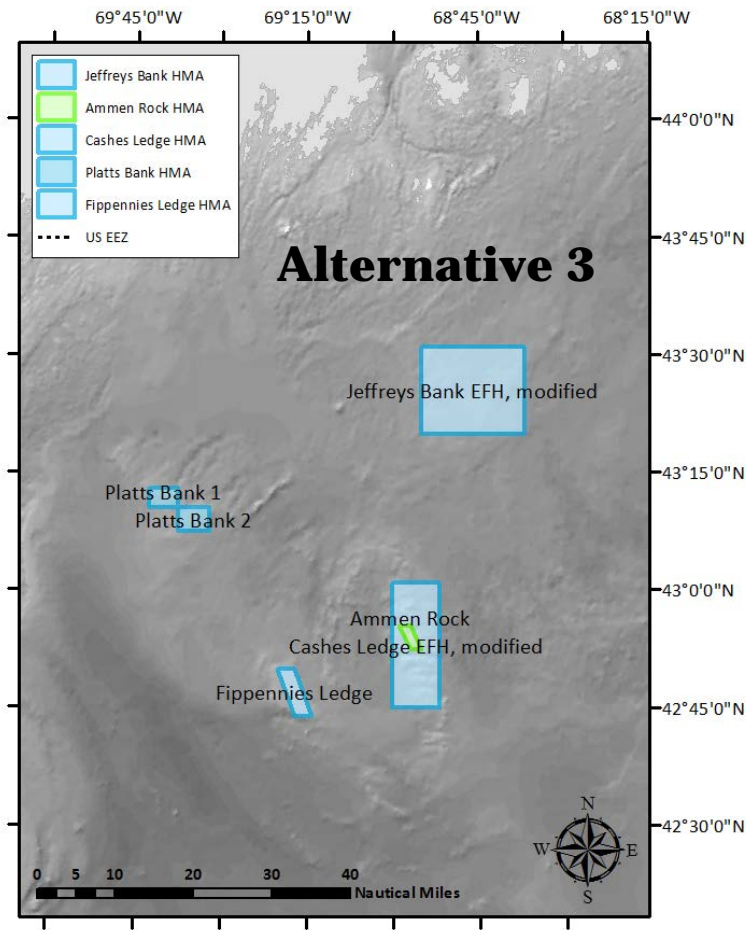
Omnibus Essential Fish Habitat Draft Amendment 2

1

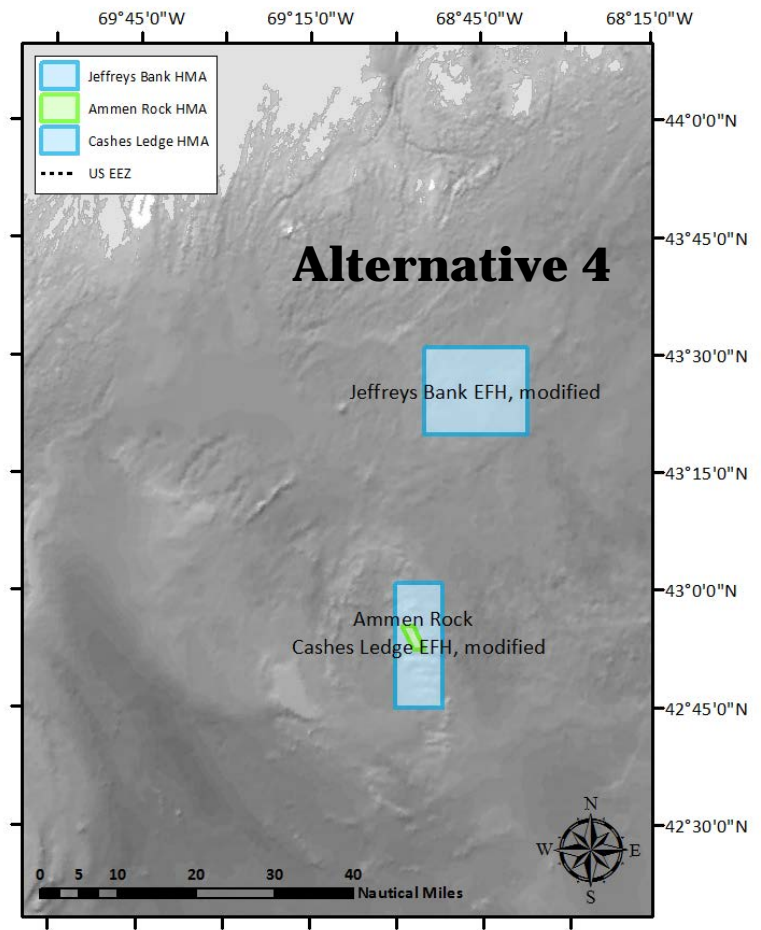
**New England Fishery Management Council
Groundfish Recreational Advisory Panel
January 22, 2014
Danvers, MA**

Central GOM Habitat Management

2

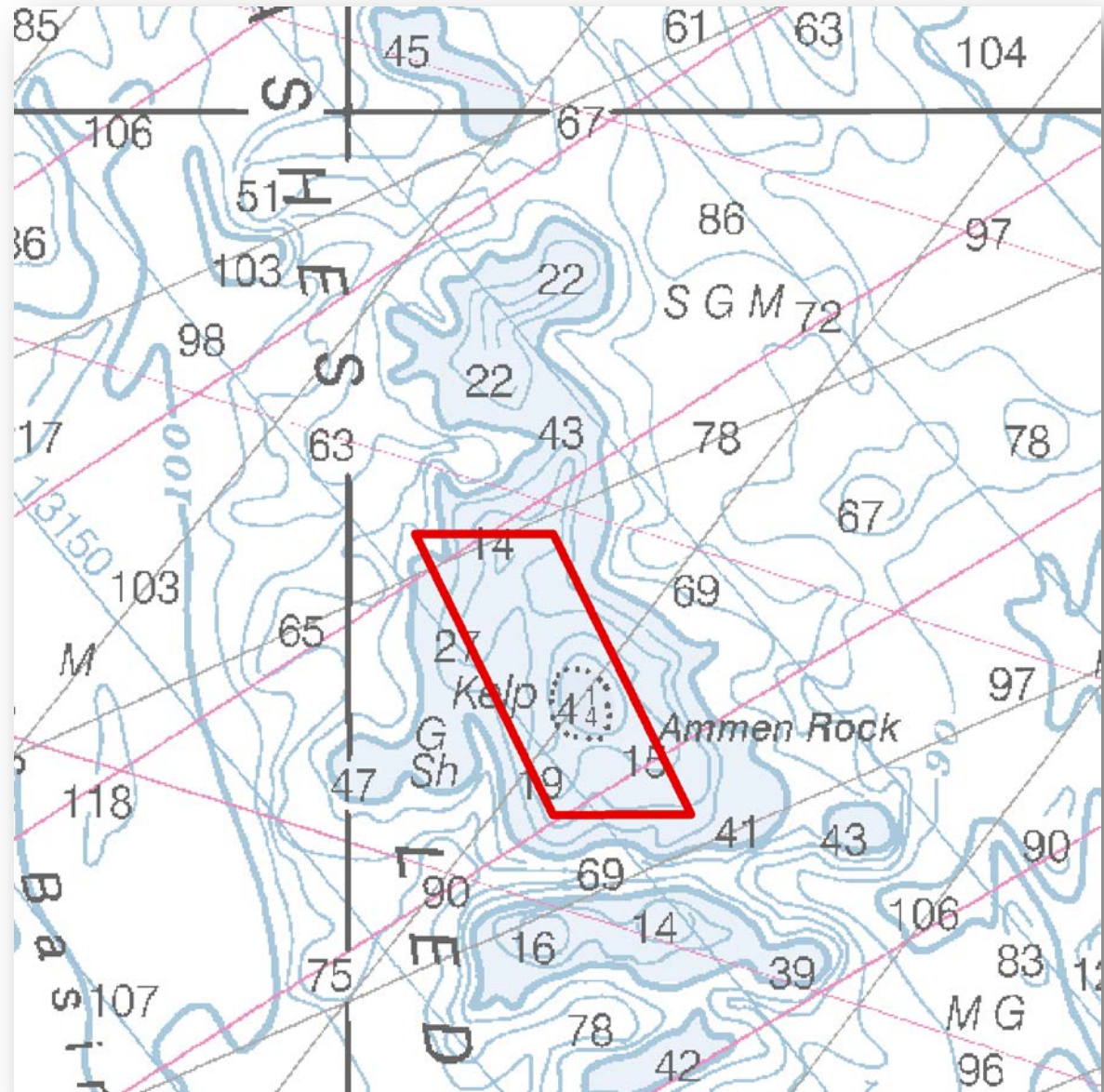


WGS 1984 UTM Zone 19N projection; map updated Sept 12, 2013



WGS 1984 UTM Zone 19N projection; map updated Sept 12, 2013

Ammen Rock
area proposed
as a closure to
all fishing,
which would
include
recreational
fishing.



Gulf of Maine Groundfish Spawning

4

Alternative 1 (no action)

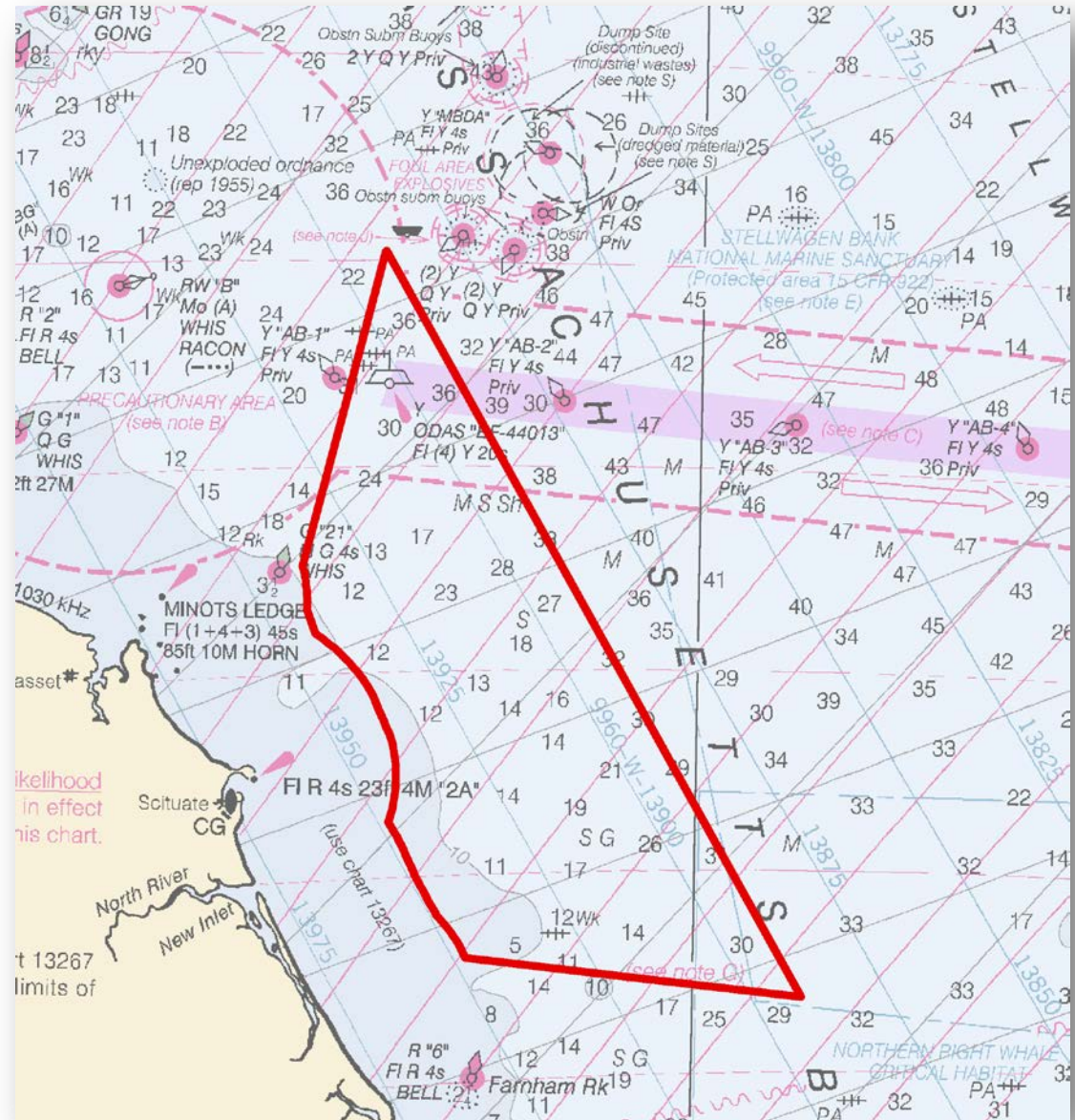
- Year-round Cashes Ledge, WGOM groundfish areas
- Sector rolling closures
- Common pool rolling closures
- GOM Cod Spawning Protection Area

Alternative 2

- Sector rolling closures
 - Affects rec fishing under Option B
- GOM Cod Spawning Protection Area
- Massachusetts Bay Spawning Area (new)

Whaleback
(existing area)
and
Massachusetts
Bay (new area)
would be closed
seasonally to
recreational
groundfishing

Mass Bay
season =
November 1-
January 31

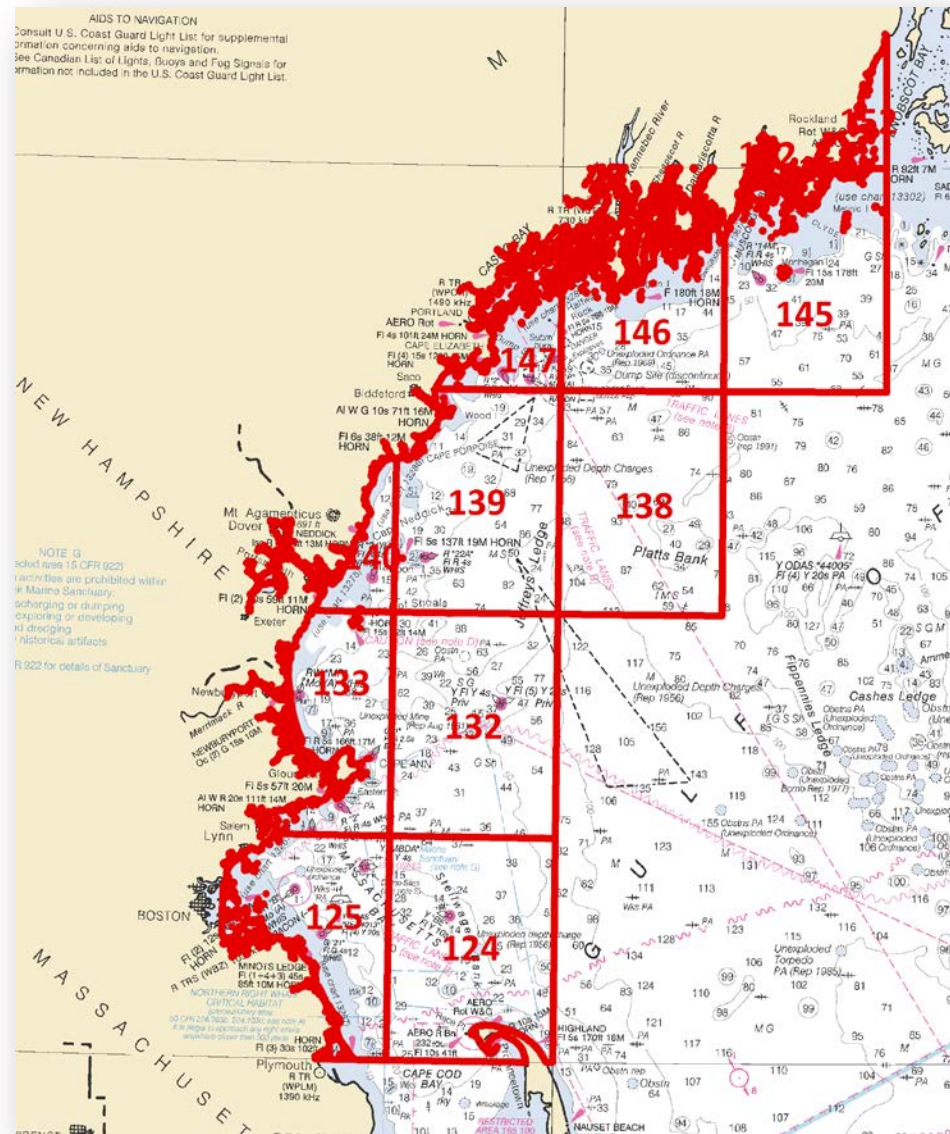


Under GOM
spawning
alternative 2b,
sector rolling
closures would
be applied to
recreational
groundfishing

April = 124-133

May = 132-138

June = 139, 140,
145-147

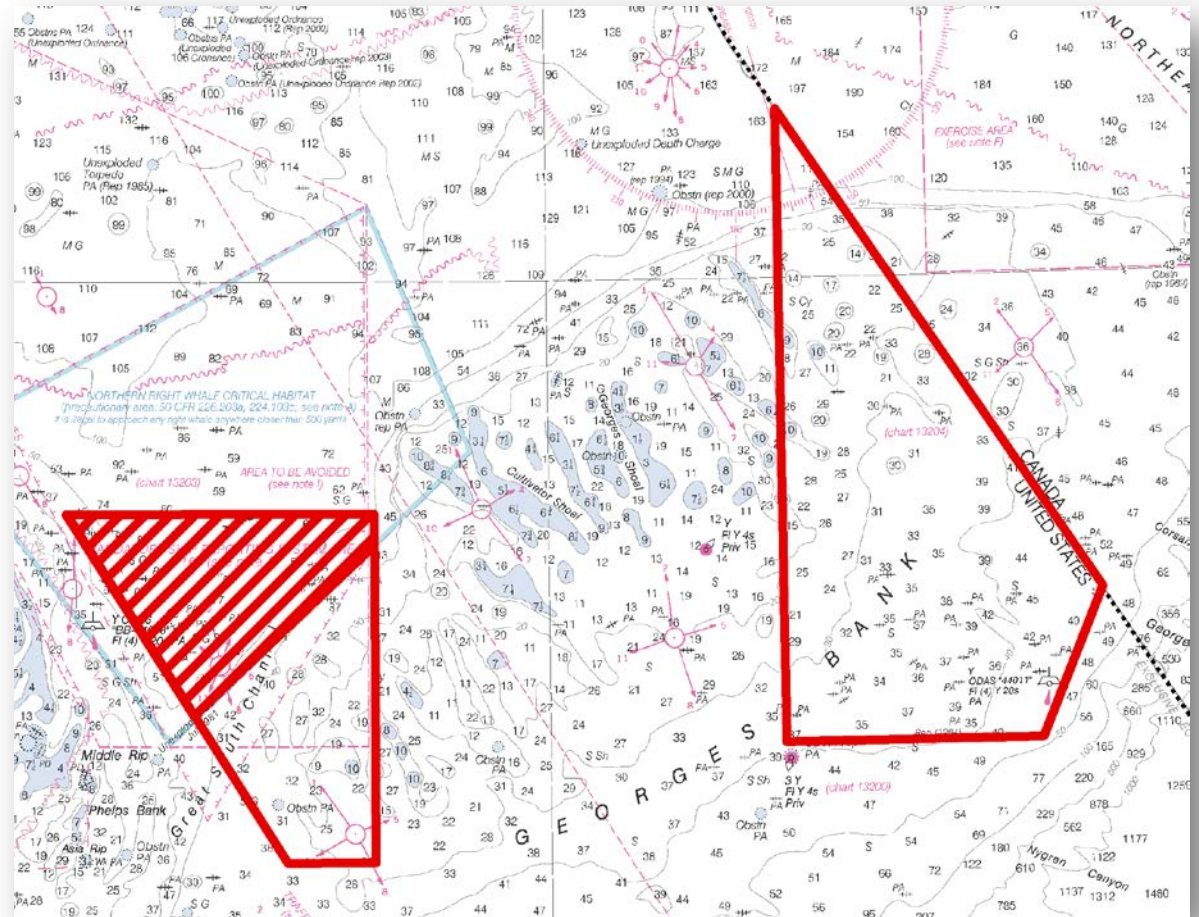


Georges Bank Groundfish Spawning

7

- Alternative 1 (no action): CAI, CAII, NLCA year round, May se
- Alternative 2: CAI, CAII during February, March, April
 - Option A – closure does not affect recreational fishing
 - Option B – closure does affect recreational fishing
- Alternative 3: CAI North, CAII during February, March, April
 - Option A – closure does not affect recreational fishing
 - Option B – closure does affect recreational fishing

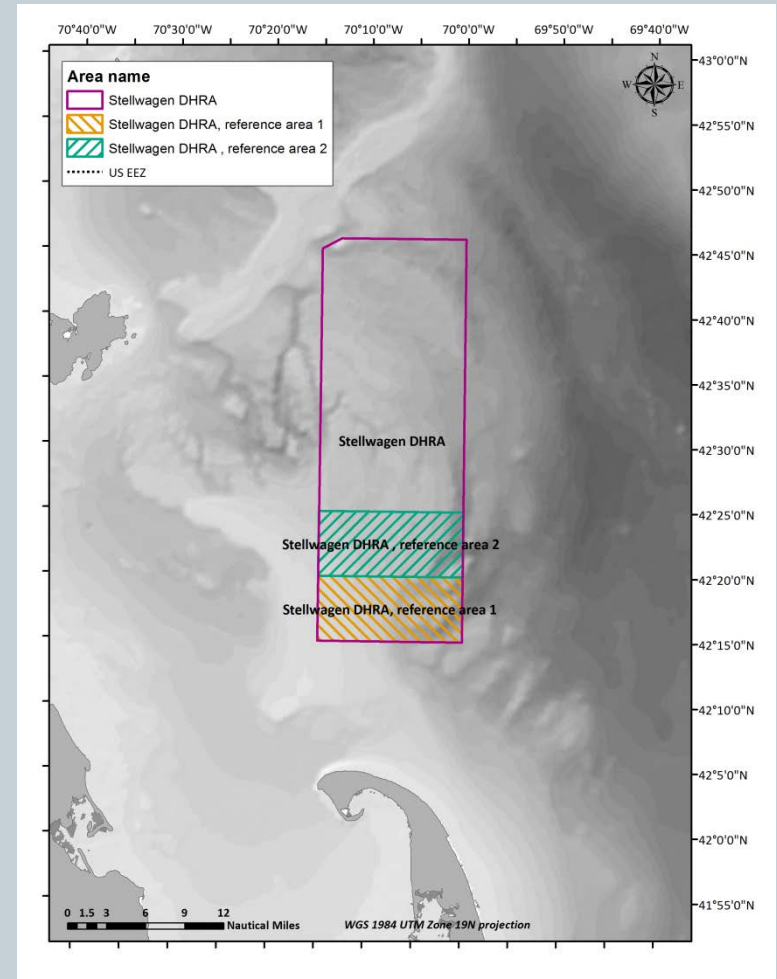
Under GB spawning alternative 2b, CAI and CAII would be applied to recreational groundfishing, February-April



DHRA Alternative 3: Stellwagen

9

- Same boundaries as Stellwagen Large HMA, subset of WGOM Habitat Closure
- No action measures throughout that are associated with overlapping WGOM groundfish closure (i.e. no fishing vessels, with various exemptions)
- Two 5 x 10 nm reference area options – also closed to recreational groundfishing
- Sunset provision (Alternative 5) would apply if also approved

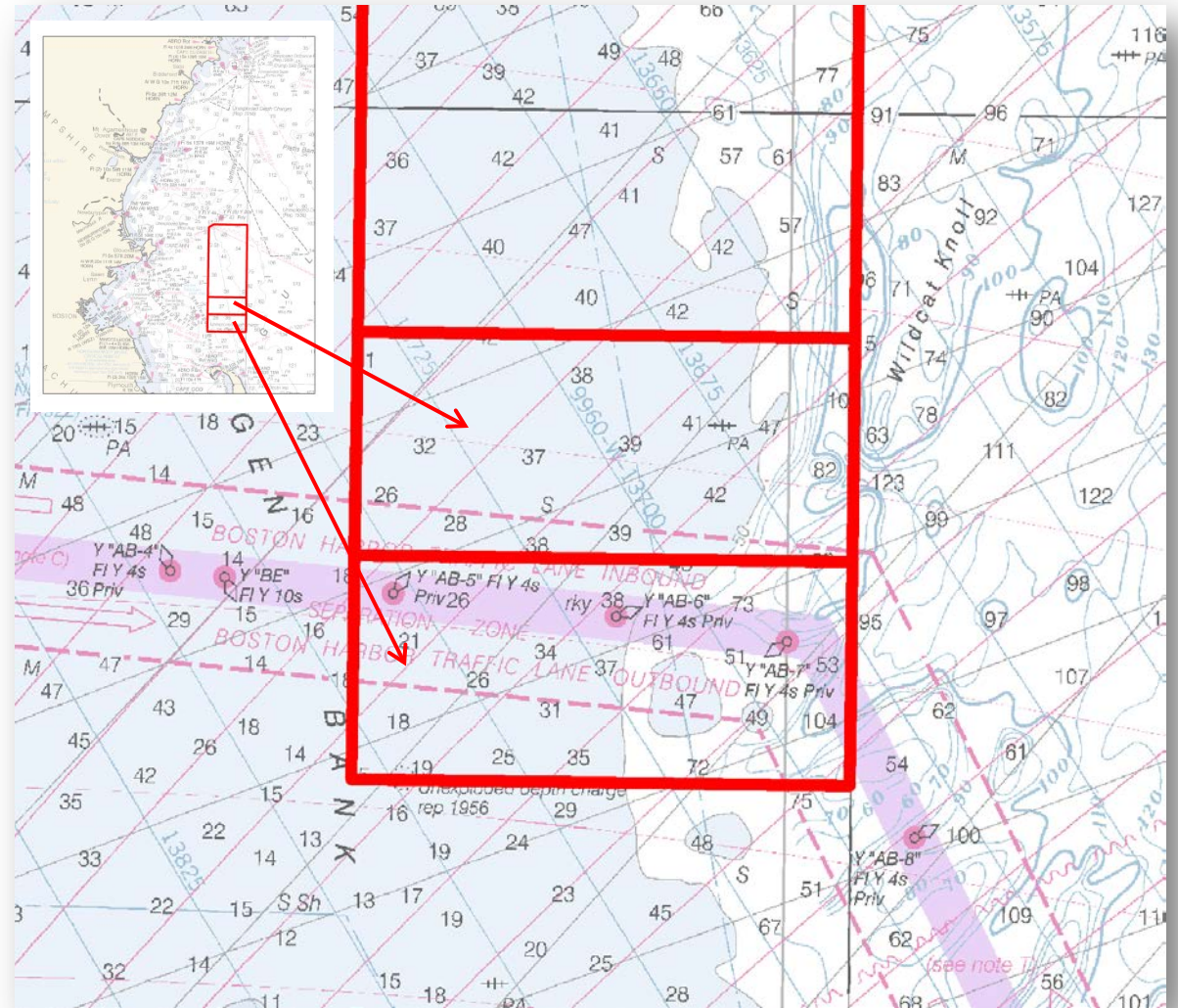


Option A – with
southern
reference area

Option B – with
northern
reference area

Option C –
without
reference area

DHRA Alternative 3: Stellwagen



Alternative 5: DHRA sunset provision

11

- Allows administrative removal of a DHRA designation after three years if specific criteria are not satisfied
- Criteria relate to active or immediately pending use for specific types of research
 - See Volume 2, introduction to section 2.4, for research agenda
- Habitat Management Area or Spawning Area designations and associated restrictions would not be affected if the DHRA is removed