

**NEFMC Council Meeting November 18-20, 2014
Groundfish Amendment 18 Motions for Consideration**

Accumulation Limits

August Committee Motion: To move Section 4.1.3.1, Option A (Do not grandfather current holdings) to the Considered but Rejected section.

The motion carried (7/1/0).

September Committee Motion: To recommend to the Council that for Section 4.1.3.1. Option B (Grandfather current holdings as of the control date; p. 35), add clarifying language that the grandfathered status of an individual or entity is not transferrable and is not attached to the holdings itself.

The motion carried (8/0/3).

August Committee Motion: In Section 4.1.3.2 (Disposition of current holdings in excess of what is allowed), add Option C to allow the purchase of permits that exceed the PSC cap, with the stipulation that any PSC over the cap would be permanently deleted from that permit and annually redistributed to the remainder of the fleet in the manner described in Framework 45. It would not be used by the purchaser and would no longer be attached to that permit when it is sold.

The motion carried (5/0/1).

August Committee Motion: In Section 4.1.3.3 (Acquisition of future holdings), add Option B that would require relinquishment (permanent divestment) only of the PSC that is above the established cap.

The motion carried (6/0/0).

September Committee Motion: For Section 4.1 (Accumulation limits; p. 30-39), allow accumulation limits to be modified in a future framework due to a federal permit buyout or buyback.

The motion carried (10/0/1).

Motion (Blount): To approve for analysis the range of alternatives in Section 4.1 (Accumulation limits; p. 30-39).

Inshore/Offshore GOM

September Committee Motion: In Section 4.5.1 Alternative 2 (Establish an inshore/offshore boundary), delete the text (on p. 50):

“This action [alternative] is based on knowledge of the seasonal distribution of juvenile and adult fish within the management area, differences between the inshore and offshore fishing grounds, and the location of known spawning grounds.” And “One of the most important reasons for distinguishing management areas is to avoid over-exploitation of individual spawning components that are included within a stock-complex.”

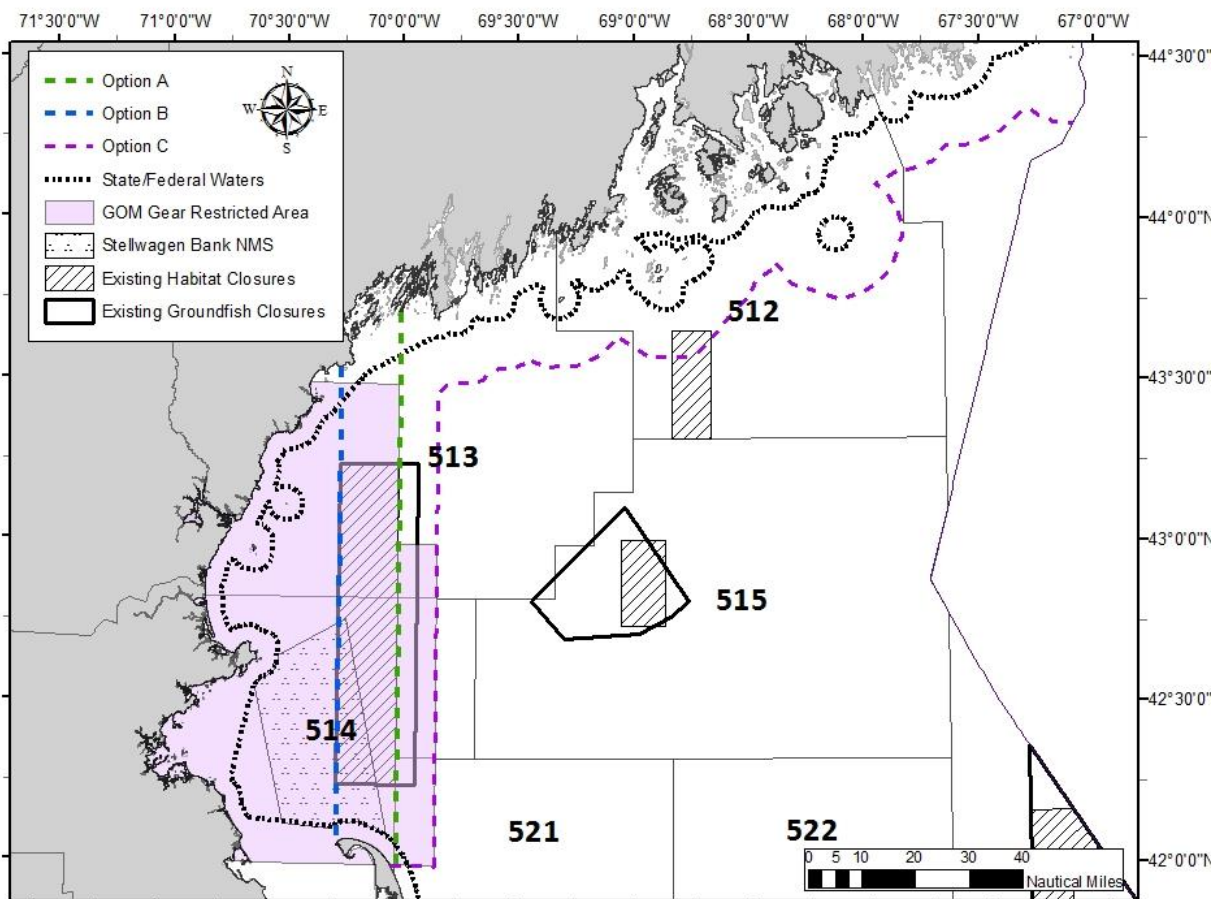
The motion carried (7/2/1).

August Consensus Statement: The intent of the inshore/offshore measures (Section 4.5) is to address Goals 1 and 3 of Amendment 18.

August Consensus Statement: In Section 4.5.1, part of the rationale for Alternative 2 Option B (boundary line at 70°15'W) would be to create a distinction between the day-boat and the trip boat fishery.

September Committee Motion: In Section 4.5.1 Alternative 2 (Establish an inshore/offshore boundary; p. 50-51), add an Option C that would establish an inshore/offshore line that goes from where 42°N intersects the state water boundary of Massachusetts, runs west to 69°50'W, runs north along 69°50'W to the 12 nm territorial sea line, then runs northeast to the Hague Line along the 12 nm territorial sea line.

The motion carried (9/0/1).



[Note: This is Figure 2 (p. 54) of the Discussion Document. The motion considers adding the Option C line illustrated here.]

August Committee Motion: In Section 4.5.2.2, Alternative 2 (Establish an inshore/offshore GOM cod sub-ACL), refine the options for specifying the control rule for setting the sub-ACLs by adding sub-options to Options B and C that would have two time periods, 10- and 20-years rolling forward (set in each specifications process).

The motion carried (5/1/0).

September Committee Motion: Any option in Section 4.5 (Inshore/offshore GOM; p. 50-58) on prohibiting fishing without an observer or electronic monitoring technology would only apply to commercial vessels, and that reporting measures be established to accurately apportion catch to each sub-ACL (including for recreational vessels).

The motion carried (7/0/2).

September Committee Motion: For clarity, in Section 4.5.4 Alternative 4 (Trip Declaration; p. 57-58), eliminate Options A and B and add the concept of Option B into to the catch monitoring provision of Section 4.5.2 Alternative 2 (Establish inshore/offshore GOM cod sub-ACL) as modified today.

The motion carried (9/0/0).

Redfish Exemption Area

September Committee Motion: To add an alternative in Amendment 18 that would allow vessels to use a 5.5 inch codend within the Redfish Exemption Area (defined by the coordinates below) on trips with an observer or approved electronic monitoring technology on-board.

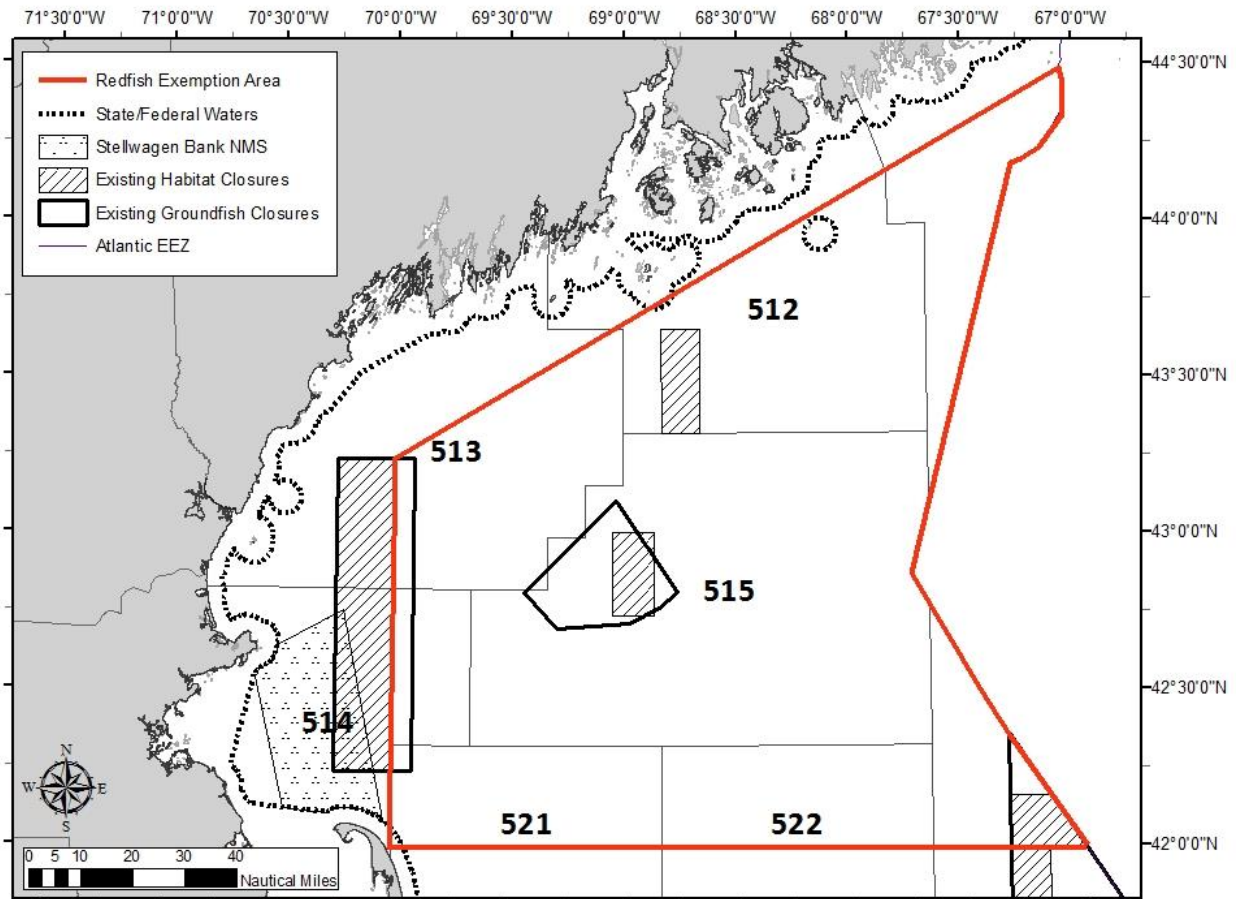
Stipulations:

- 1) Prior to leaving the dock, vessel operators would be required to declare their intent to fish in the Redfish Exemption area through the VMS by checking the box next to "Redfish Trip";
- 2) In the first part of the trip, vessel operators would fish with conventional groundfish codends (6.5 inch) in the GOM and GB regulated mesh areas, except when towing a separator trawl on GB where the codend may be 6 inch;
- 3) Vessel operators would be allowed to switch to 5.5 inch codends at the end of the trip after submitting VMS notification;
- 4) Vessel operators would report catch from the entire trip through the VMS prior to returning to port; and
- 5) Vessel operators would submit a separate VTR to report catch or each codend.

Point	N. Lat.	W. Long.
A	44°27.25'	67°02.75'
B	44°16.25'	67°30.00'
C	44°04.50'	68°00.00'
D	43°52.25'	68°30.00'
E	43°40.25'	69°00.00'
F	43°28.25'	69°30.00'
G	43°16.00'	70°00.00'
H	42°00.00'	70°00.00'
I	42°00.00'	67°00.63' ^a

Note: This area is currently the Redfish 6 inch exempted area.
^aThe intersection of 42°00' N. latitude and the U.S.-Canada Maritime Boundary. Longitude is approximate.

The motion carried (8/1/1).



[Note: This is Figure 4 (p. 63) of the Discussion Document. The motion considers adding the Option C line illustrated here.]

U.S./Canada Trading

September Committee Motion: To move Section 4.2 Trading U.S./Canada TACs (p. 40-42) to Considered but Rejected.

The motion carried (9/0/2).

Range of Alternatives

Motion (Blount): To approve for analysis the Range of Alternatives in Amendment 18.