

# Action to consider modifications to the GB Haddock sub-ACL and AMs in the Herring Fishery

**Deirdre Boelke**  
**Council Staff**

**Groundfish Committee**  
**June 9, 2016**



New England  
Fishery Management Council

# Outline of Presentation

1. Review April 2016 Council meeting
2. Review Draft Action Plan – Document #4a
3. Review Draft Discussion Document - #4b
  - 4 specific areas for input
4. Summarize input to date from Herring PDT, Herring AP, Herring Cmte, and Groundfish PDT
  - Draft GF PDT Memo – Doc. #4c
  - Draft Herring AP and Cmte motions – Doc. #4d



# I. April Council meeting

- Not a new issue – Council working on this over 10 years
- **Motion 4b**: *That the Council initiate an action to consider amending: the herring fishery catch cap of Georges Bank haddock, associated accountability measures, and their implementation using approaches that are frameworkable.   **Vote (13/3/1).***
- **Motion 5**: *that the following be a goal for the management action: To incentivize the midwater trawl fleet to minimize the incidental catch of haddock in the herring fishery while providing the opportunity to fully harvest the sub-ACL of herring for herring management Areas 3 and 1B.   **Vote (17/0/0).***



# What is in and what is out?

## Based on March Cmte Motion

### IN

- Seasonal split of Herring sub-ACL (80/20 split)
- Refine AM area (to leave some area to fish for herring within Area 3)
- Define an AM season linked to higher bycatch rate months
- Replace in-season AM with following year AM

### OUT - frameworkable

- 50% buffer around Herring sub-ACL
- Transfer haddock from GF ACL to Herring MWT ACL
- Increase Herring sub-ACL to 2%
- Herring AM does not trigger if total ACL is below some threshold

### OUT - Amendment

- Allow transfer of haddock from GF sector to herring fishery or herring vessel/sector
- Emergency action to suspend AM

## 2. Draft Action Plan (#4a)

- Specific vehicle for action still uncertain – June meeting
- Goal and likely range of alternatives described
- Environmental Assessment expected (not an EIS)
- Herring and GF PDT involvement needed
- Action initiated in April, development over the summer
- Final action as early as Sept if range more limited
- Final action in Nov or Jan if more complex; or folded in GF specs if more efficient (FWV56)
- Target Implementation – May 1, 2017
- **Looking for Cmte approval of draft action plan**



# 3. Draft Discussion Document (#4b)

- Section 1.1 – Background
- Section 1.2 - Draft purpose and need (page 8)

## **Cmte Input #1 – Review and Approve**

- Section 2.0 – Draft Alternatives

Disclaimer: staff developed  
Herring and GF PDT have had preliminary review  
More work needed – looking for initial input

## **Cmte Input #2 – Add / Remove / Modify**

Additional rationale and discussion would help clarify  
what specific alternatives should be developed further.

- One slide for each section - handful of background slides

### 3. Draft Purpose and Need (p. 8) *with input from Herring Cmte*

The purpose of this action is to consider measures that would incentivize the midwater trawl fleet to minimize the incidental catch of haddock in the herring fishery while providing the opportunity to fully harvest the sub-ACL of herring for Herring Management Areas 3 and 1B. ~~Given the current large biomass of Georges Bank haddock, and the fact that overall haddock catches are far below the ABC for that stock, the current fixed 1.0% cap on haddock catch by the herring fleet has a real potential to create a serious constraint on herring catch.~~ Therefore, this action is needed to reduce the potential for negative impacts on the herring fishery from reducing the opportunity to fish the TAC in Area 3 and 1B, and avoid potential impacts to the supply of herring used as bait for the lobster fishery. ~~This action is also needed to reduce the potential for negative impacts on the mackerel fishery since those vessels are also impacted by the GB haddock AM.~~

# 3. Draft Discussion Document

## Section 2.1 – GB Haddock catch cap

- 2.1.1 No Action
- 2.1.2 Modify the cap
- 2.1.3 Modify the cap – variable percentage
- 2.1.4 Increase cap with transfer to GF fishery mid-year
- 2.1.5 Terminate sub-ACL – herring fishery under other subcomponent
- 2.1.6 Others?





# Table 1 – GF PDT memo

Groundfish FY	<u>Midwater Trawl- Georges Bank Haddock</u>				
	Sub-ACL	Landings	Discards	Catch	Percentage of sub-ACL
2010	84	69.2	0	69.2	82.3%
2011	318	101.8	0	101.8	32.0%
2012	286	271.9	16.7	288.6	100.9%
2013	273	272.7	17.2	290	106.2%
2014	162	113.5	0	113.5	70.1%
2015	227			235.54	103.76%
2016	521			12.08	2.3%

2016 - FW 55 value does not include deduction for FY 2015 overage; catch from 5/1/16-5/15/16

## Table 2 – GF PDT memo

Groundfish FY	<u><i>Commercial Fishery- Georges Bank Haddock</i></u>				
	Sub-ACL	Landings	Discards	Catch	Percentage of sub-ACL
2010	40,440	8,299.2	41	8,340.2	20.6%
2011	30,580	3,758.5	82	3,840.5	12.6%
2012	27,438	926.8	270.7	1,197.6	4.4%
2013	26,196	2,696.4	281.1	2,977.5	11.4%
2014	17,171	4,975.3	473.7	5,449.1	31.7%
2015	21,759	4,240.0	861.3	5,101.2	23.4%
2016	51,667	398.4	73.5	471.9	0.9%

# Table 4 – GF PDT memo

<b><i>Fishing Year</i></b>	<b><i>U.S. ABC (mt)</i></b>	<b><i>Other sub-Component</i></b>		<b>Total</b>	<b>% of sub- Compo nent Caught</b>
		<b>% of ABC</b>	<b>Value (mt)</b>		
2010	44,903	4%	1,796	131.0	7%
2011	34,244	4%	1,370	305.8	22%
2012	30,726	4%	1,229	25.1	2%
2013	29,335	4%	1,173	56.5	5%
2014	19,229	4%	769	793.4	103%
2015	24,366	4%	975		
2016	56,068	1%	561		
2017	48,398	1%	484		
2018	77,989	1%	779		

# Table 5 – GF PDT memo

Fishery	<i><u>Fishing Year</u></i>					Average Catch
	2010	2011	2012	2013	2014	
Scallop	2.6	2.4	3.4	3.5	5.5	3.5
Fluke	0.6	8.2	0.0	0.1	31.1	8.0
Herring (non-MWT)	45.1	14.4	1.8	5.2	40.1	21.3
Lobster/Crab	0.2	2.3	0.6	0.0	0.8	0.8
Menhaden	1.5	0.0	0.5	0.0	0.5	0.5
Monkfish	0.0	0.1	0.0	0.0	0.1	0.0
Research	0.0	18.1	3.4	0.5	5.6	5.5
Scup	0.2	5.5	0.0	0.1	38.3	8.8
Shrimp	0.1	0.1	0.0	0.0	6.3	1.3
Squid	23.4	98.8	6.7	14.8	194.8	67.7
Squid/Whiting	17.1	52.0	3.9	15.5	149.5	47.6
Surf Clam	0.0	0.0	0.0	0.0	23.6	4.7
Whelk/Conk	0.0	0.0	0.1	0.0	0.0	0.0
Whiting	0.1	0.9	0.0	0.0	0.1	0.2
Unknown	40.0	102.9	4.7	16.7	297.2	92.3
<b>Total</b>	<b>131.0</b>	<b>305.8</b>	<b>25.1</b>	<b>56.5</b>	<b>793.4</b>	<b>262.4</b>

<b>Herring MWT</b>	<b>69</b>	<b>102</b>	<b>289</b>	<b>290</b>	<b>114</b>	<b>173</b>
--------------------	-----------	------------	------------	------------	------------	------------

# Table 3 – GF PDT memo

GF FY							<u>ACLs</u>		
	OFL	ABC	Canada n TAC	US ABC	State waters Sub- Component	Other Sub- Component	Commercial Groundfish sub-ACL	MWT Sub-ACL	Total ACL
2016	160,385	77,898	21,830	56,068	561	561	51,667	<b>521</b>	53,309
2017	258,691	77,898	29,500	48,398	484	484	44,599	<b>450</b>	46,017
2018	358,077	77,898	0	77,898	779	779	71,783	<b>724</b>	74,065
2019		27,264		27,264			25,124	<b>253</b>	25,923

# 3. Draft Discussion Document

## *with input from Herring Cmte*

### Section 2.1 – GB Haddock catch cap

- 2.1.1 No Action
- 2.1.2 Modify the cap (2%, 3%, 5%)
- 2.1.3 Modify the cap – variable percentage

*AP input to include minimum cap of 1%*

- 2.1.4 Increase cap with transfer to GF fishery mid-year
- ~~2.1.5 Terminate sub-ACL – herring fishery under other subcomponent~~
- 2.1.6 Others?



# 3. Draft Discussion Document

## Section 2.2 – GB Haddock AMs for the herring fishery

- 2.2.1 No Action
- 2.2.2 Modify the GB AM area

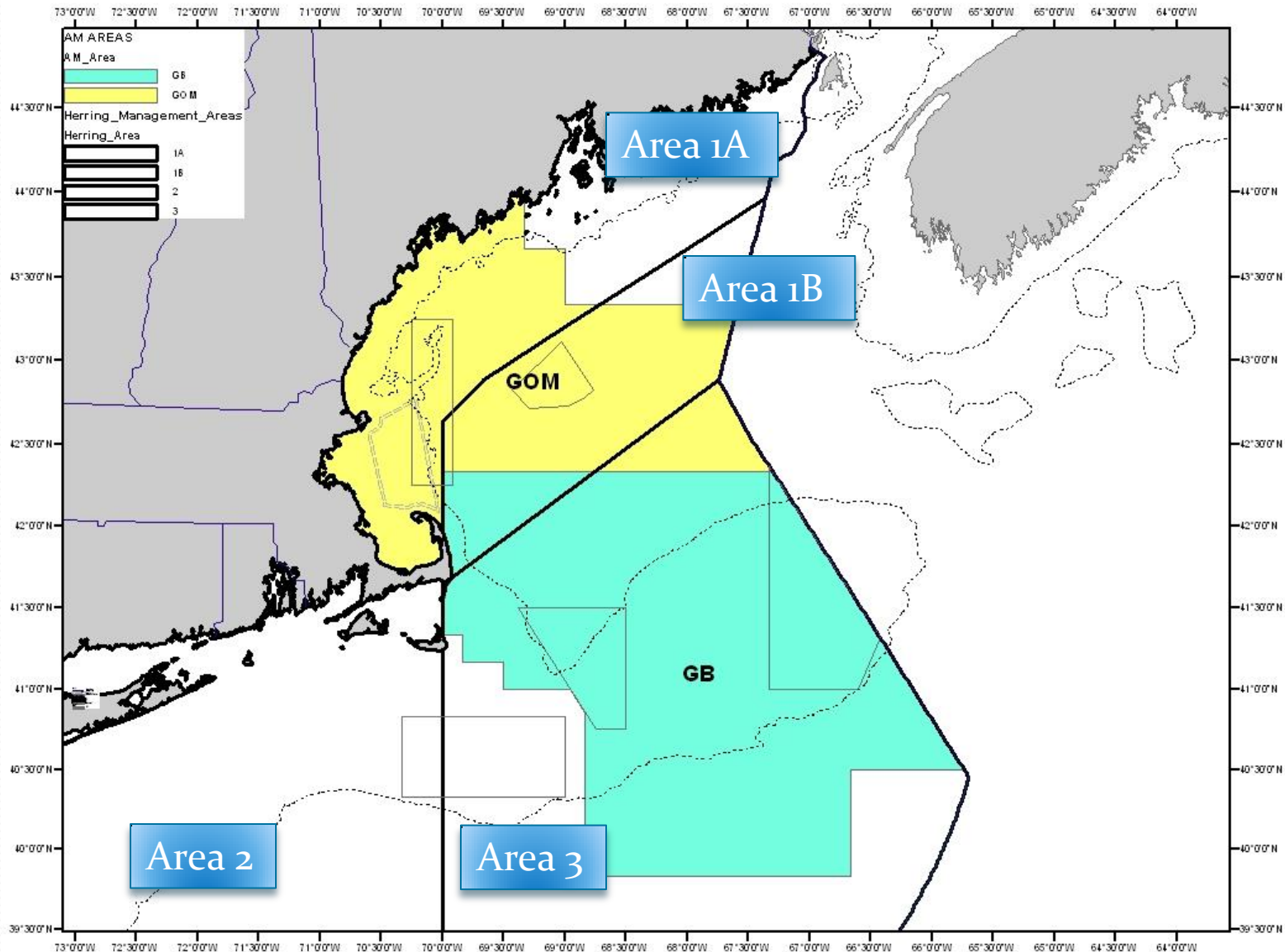
**Cmte Input #3 – What should driver be?**

**GF fishery, haddock distribution, bycatch rate?**

- 2.2.3 Establish an AM season
- 2.2.4 Modify the payback provision
- 2.2.5 Others?



# I. No Action Haddock AM areas

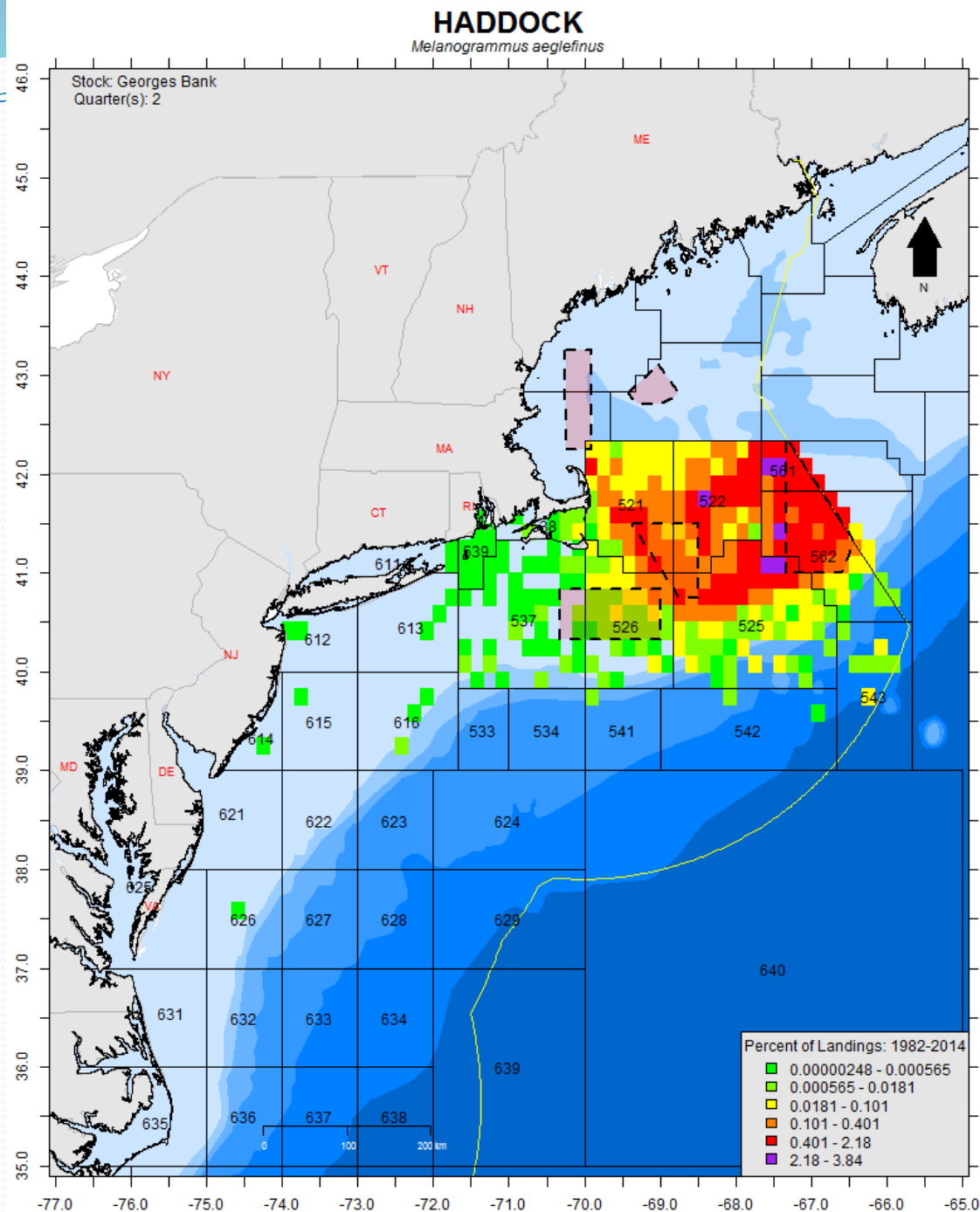




**GF Fishery**

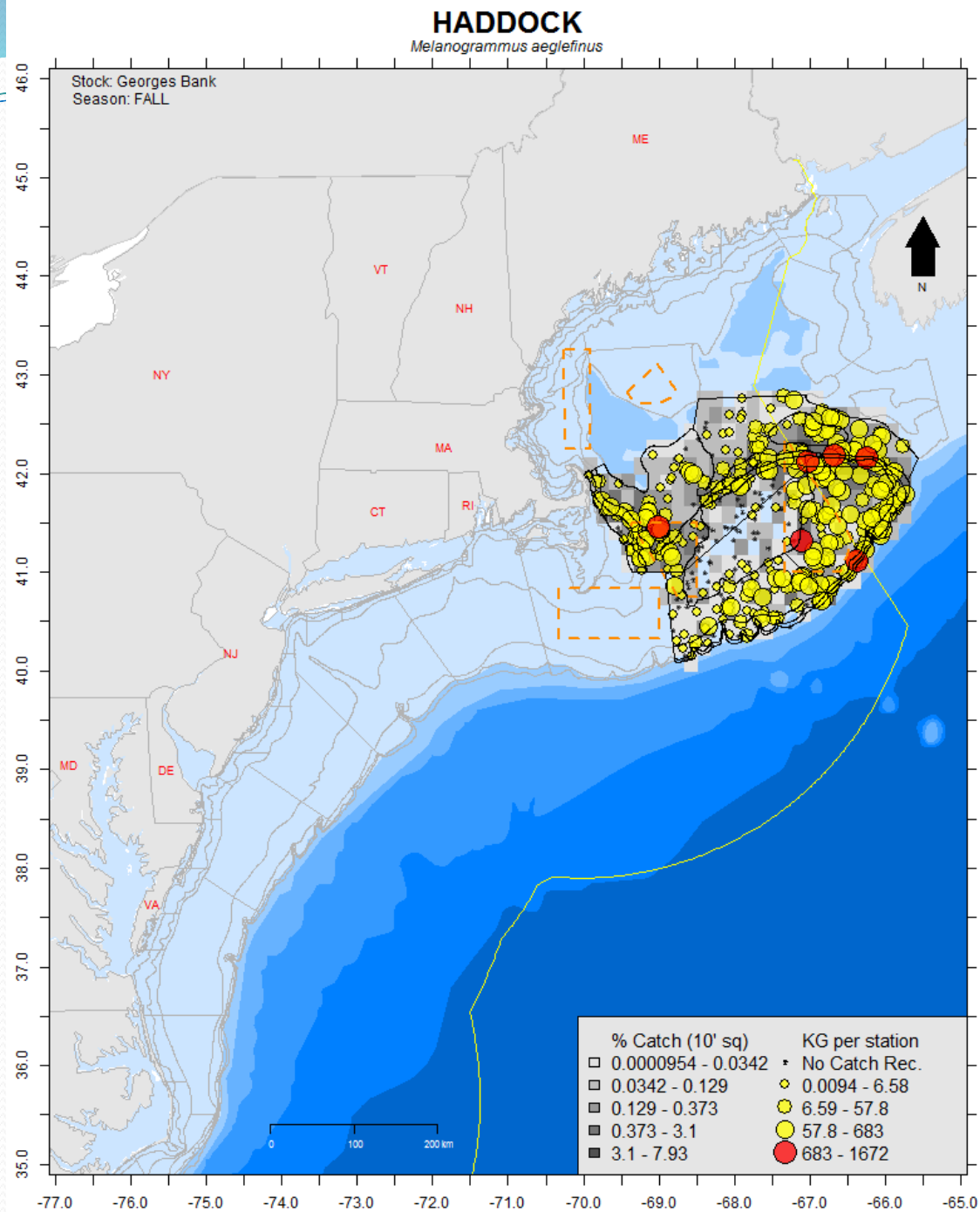
**Commercial  
Landings of  
Haddock**

**Quarter 2  
April – June  
1982-2014**



# GB Haddock Abundance

Trawl  
Surveys  
Fall  
2010-2014



## Haddock catch rate in Herring Fishery

Haddock catch in  
Observed  
Hauls for  
directed  
herring trips  
(2005-2009)

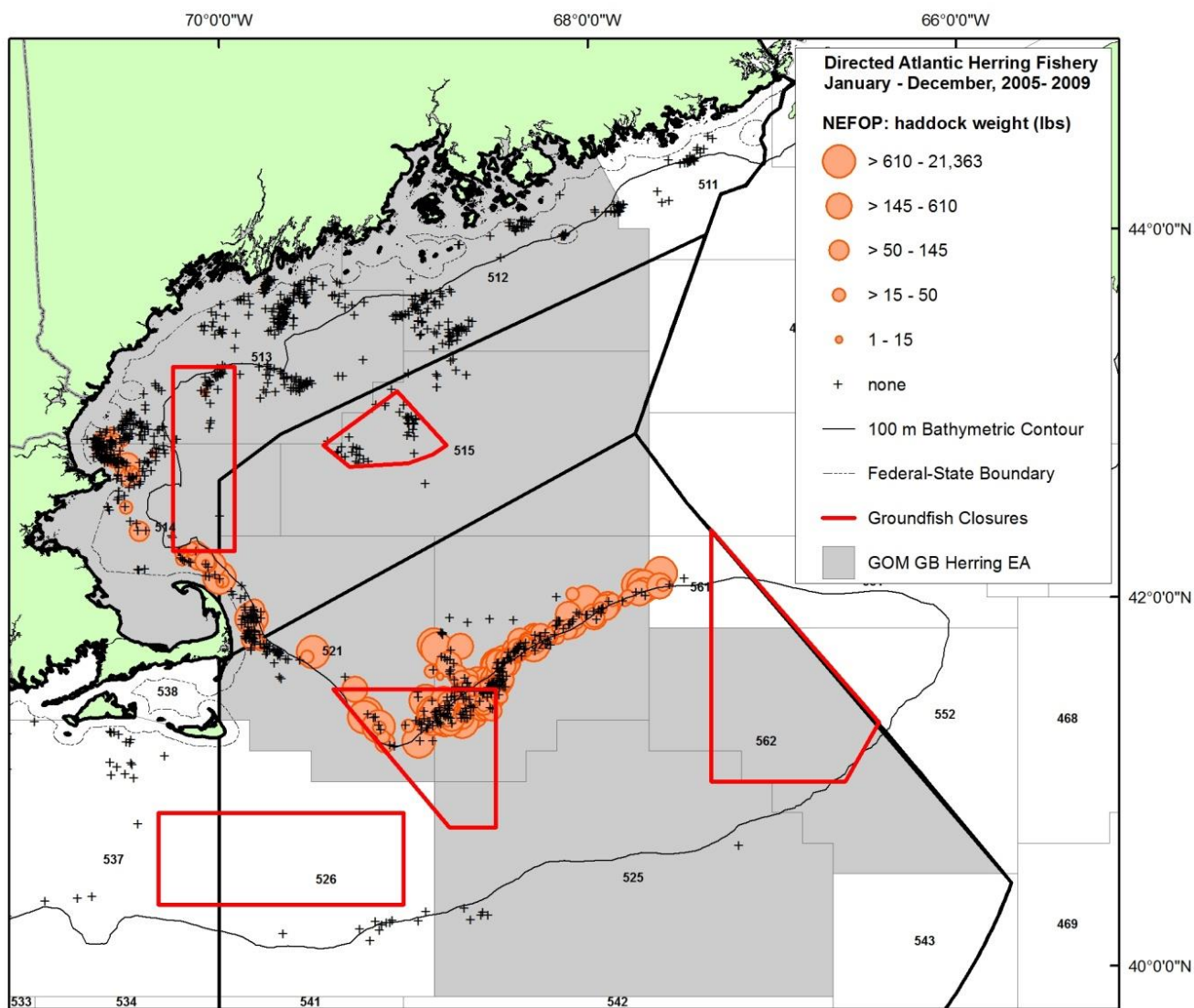
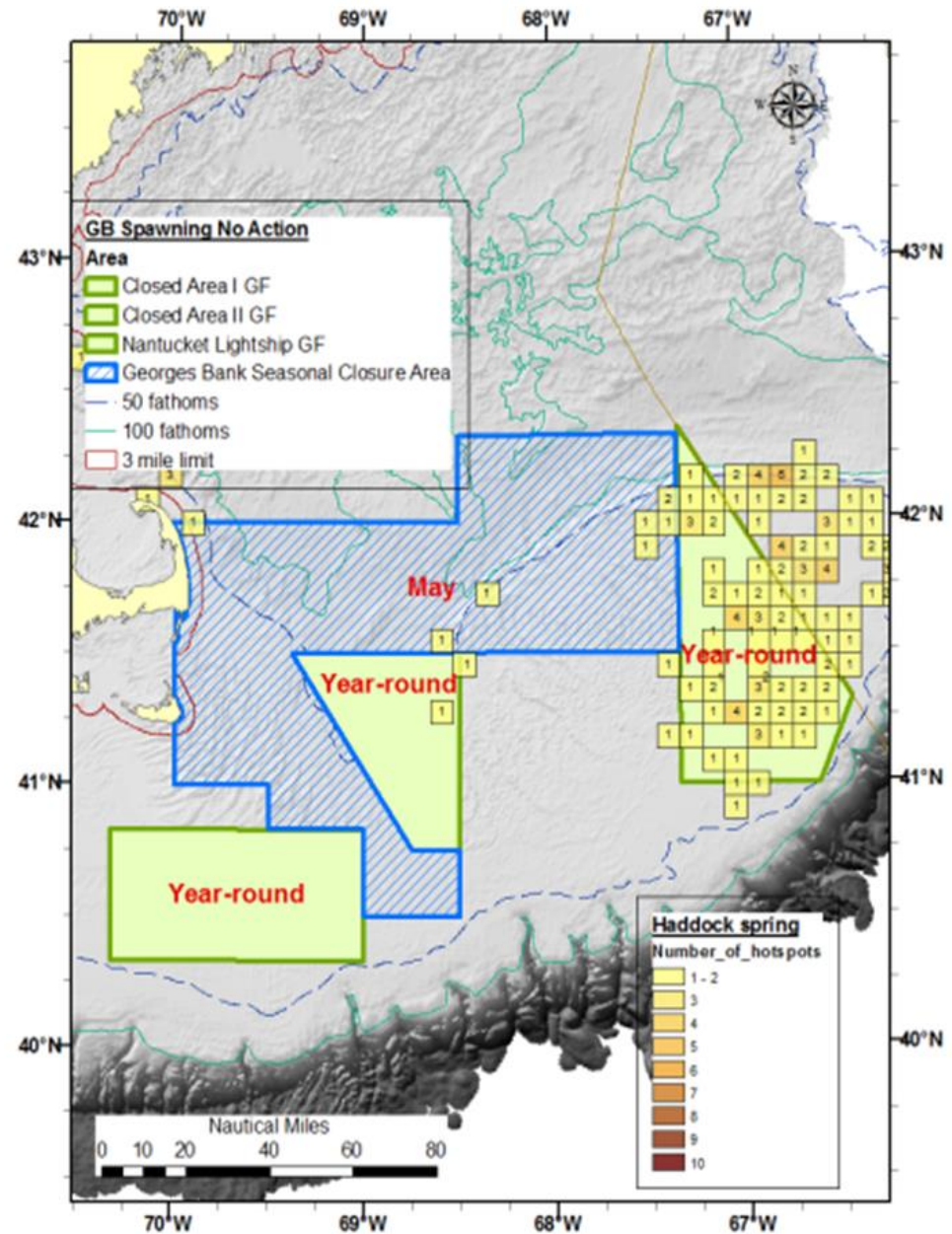


Figure 1:  
Seasonal  
distribution of  
large spawner  
hotspots for  
haddock  
(EFH Omnibus II)



# 3. Draft Discussion Document

## *with input from Herring Cmte*

### Section 2.2 – GB Haddock AMs for the herring fishery

- 2.2.1 No Action
- 2.2.2 Modify the GB AM area

**Cmte Input #3 – What should driver be?**

**GF fishery, haddock distribution, bycatch rate?**

- 2.2.3 Establish an AM season (for in-season only, do not develop a season for subsequent year AM)
- ~~2.2.4 Modify the payback provision~~
- 2.2.5 Others?





# 3. Draft Discussion Document

## Section 2.3 – Implementation of GB Haddock AMs

- 2.3.1 No Action
- 2.3.2 Modify when AMs trigger – subsequent year
- 2.3.3 Modify when AMs trigger – timing depends on precision of estimate (cv of 30%)
- 2.3.4 Seasonal split of sub-ACL (80% / 20%)
- 2.3.5 Change condition of trigger (2 sub-options)
- 2.3.6 Allow transfer of haddock to herring fishery
- 2.3.7 Amend how catch is estimated in herring fishery using dockside monitoring
- 2.3.8 Others?

# 3. Draft Discussion Document

## Section 2.3 – Implementation of GB Haddock AMs

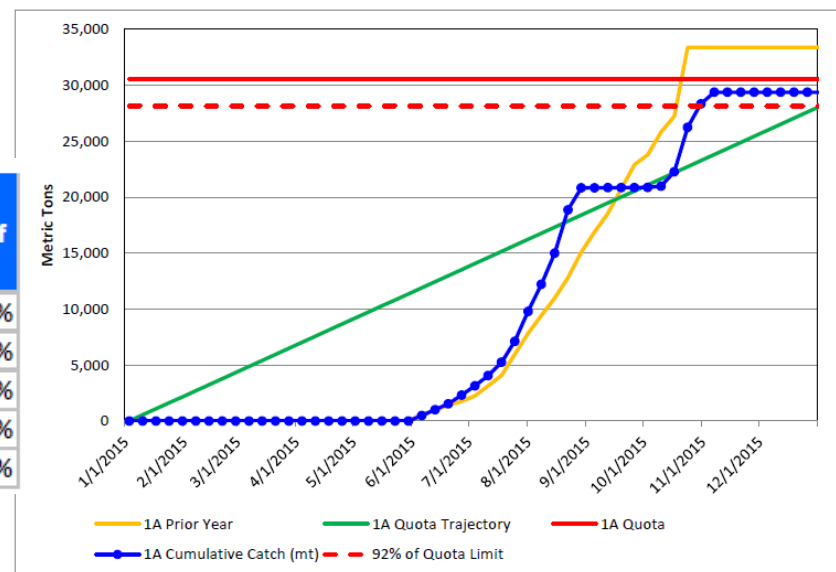
Table I of GF PDT Memo

	Midwater Trawl- Georges Bank Haddock				
Groundfish FY	Sub-ACL	Catch	Percentage of sub-ACL	CV on Catch	Observer Coverage % Trips
2010	84	69.2	82.3%		
2011	318	101.8	32.0%	17.6%	41.7%
2012	286	288.6	100.9%	12.3%	62.9%
2013	273	290	106.2%	21.3%	35.6%
2014	162	113.5	70.1%	20.5%	27.2%
2015	227	235.54	103.76%	61.4%	4.9%
2016	521	12.08	2.3%		
2016 - FW 55 value does not include deduction for FY 2015 overage; catch from 5/1/16-5/15/16					



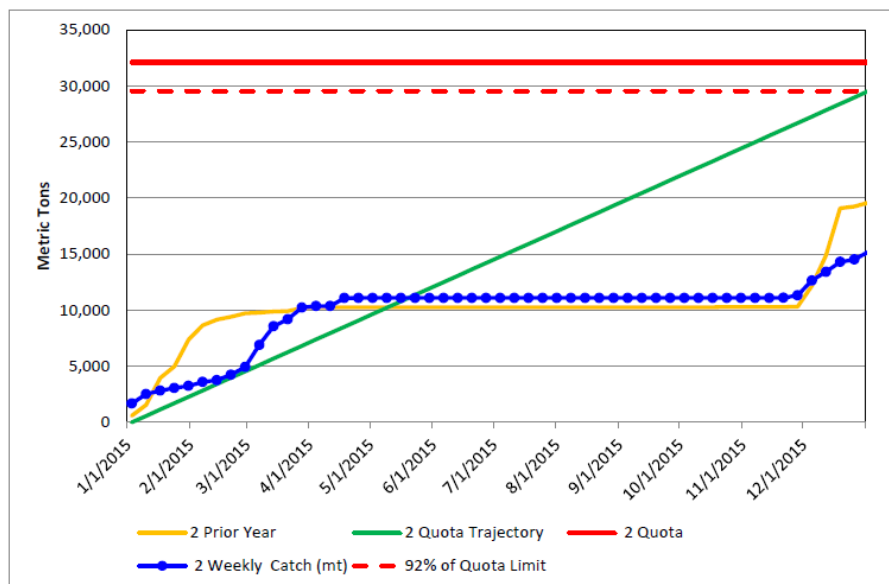
# FY 2015 Herring Catch

Atlantic Herring  
2015 Area 1A Quota Report

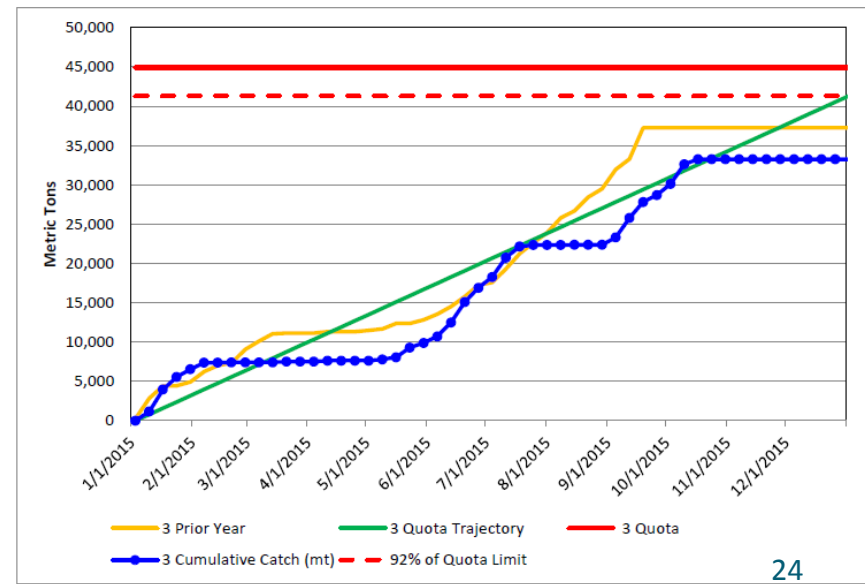


Management Area	Current Week's Catch (mt) <sup>1</sup>	Reporting Week's Catch (mt) <sup>2</sup>	Cumulative Catch (mt)	Quota (mt) <sup>3</sup>	Percent of Quota <sup>4</sup>
1A	0	0	29,406	30,580	96.16%
1B	0	0	2,889	4,922	58.69%
2	698	0	15,214	32,100	47.40%
3	0	0	33,256	44,910	74.05%
Total	698	0	80,766	104,566	77.24%

Atlantic Herring  
2015 Area 2 Quota Report



Atlantic Herring  
2015 Area 3 Quota Report





# 3. Draft Discussion Document

## *with input from Herring Cmte*

### Section 2.3 – Implementation of GB Haddock AMs

- 2.3.1 No Action
- ~~2.3.2 Modify when AMs trigger – subsequent year~~
- ~~2.3.3 Modify when AMs trigger – timing depends on precision of estimate (cv of 30%)~~
- 2.3.4 Seasonal split of sub-ACL (80% / 20%) *Clarify that this be added to list of measures under spec package*
- 2.3.5 Change condition of trigger
- ~~2.3.6 Allow transfer of haddock to herring fishery~~
- 2.3.7 Amend how catch is estimated in herring fishery using dockside monitoring
- 2.3.8 Others?

# 3. Draft Discussion Document

- Section 2.4 –Proactive GB Haddock AMs

**Cmte Input #4 –The Council has not yet mentioned proactive AMs, does the Cmte support development of proactive AM alternatives?**

- 2.4.1 – No Action
- 2.4.2 – Bycatch avoidance program
- 2.4.3 – Proactive seasonal closure
- 2.4.4 – Others?

*Failed Herring Cmte motion to not consider proactive AMs*



## 4. Herring AP and Cmte Input (#4d)

- Table with input on draft range of alternatives
- Herring AP:
  - no comments on draft action plan
  - no comments on purpose and need
  - range of alternatives: several consensus statements: 1% minimum for cap, in season AMs only, 80/20 split with increased allocation only, no proactive AMs at this time.
- Herring Cmte:
  - approved action plan,
  - approved purpose and need with 2 modifications
  - recommended range of alternatives: 2 consensus statements, 6 motions, and 2 failed motions

# Questions?

- Cmte Discussion:
  1. Review and approve Draft Action Plan
  2. Review and approve draft purpose and need
  3. Review and approve range of alternatives
    - more direction for AM area alternative
    - proactive AMs?

