

Monitoring the Stellwagen Dedicated Habitat Research Area

Presentation to the Habitat AP/CTE - 10/26/21

Key Points:

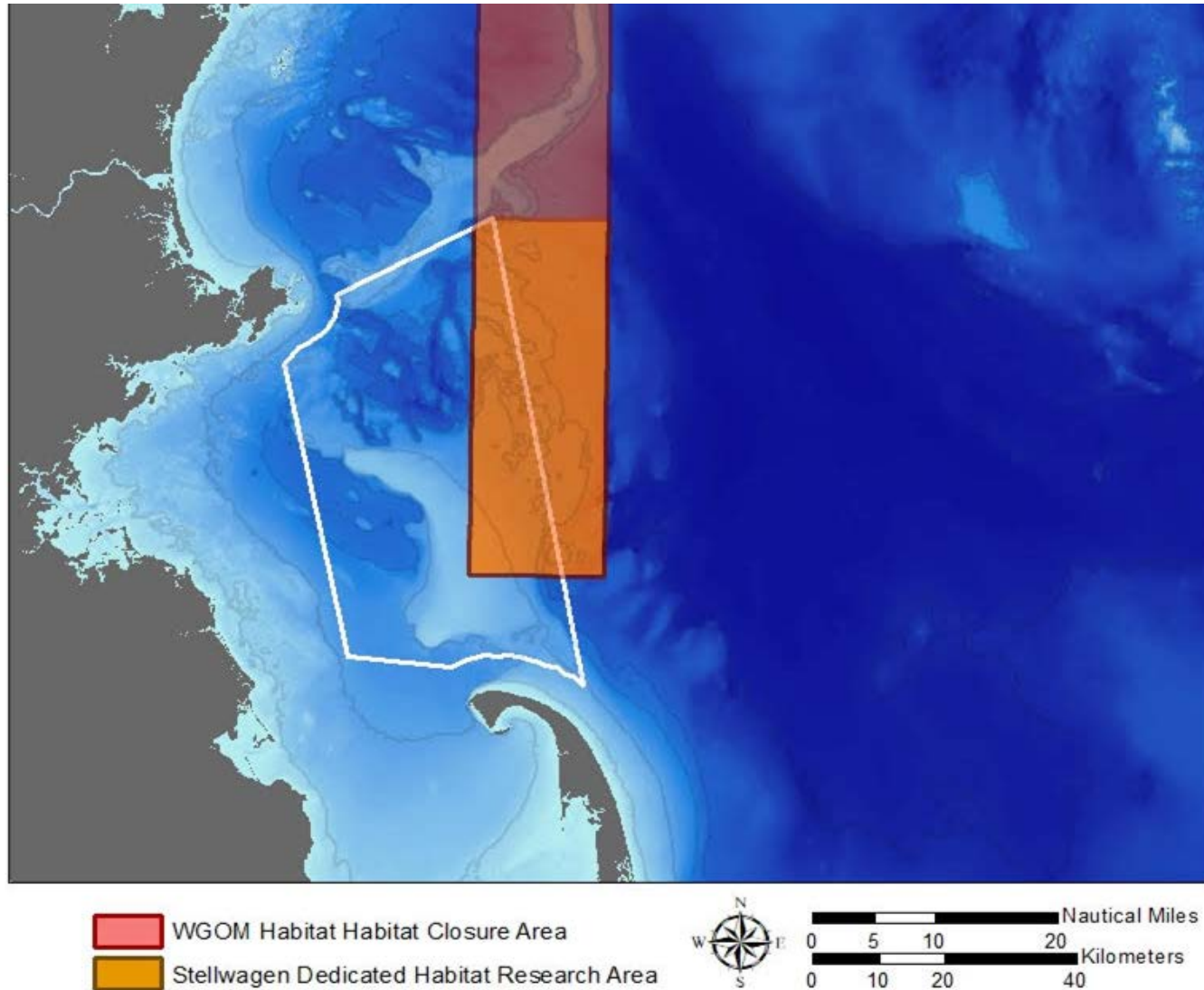
- In August, reinitiated monitoring of the SDHRA/Sliver/WGOM habitat closure/WGOM mortality closure.
- A collaboration with Dr. Peter Auster, Mystic Aquarium/UConn and Habitat PDT member
- Objective: Assess the status and dynamics of seafloor habitats/communities in the DHRA.
- Address comparable research needs identified in multiple venues.
- No results to share at this time.

Stellwagen Dedicated Habitat Research Area

- We are addressing both Council and Sanctuary research priorities

NEFMC OHA2 DHRA Research Agenda	NEFMC 2020-24 Research Priorities	Draft Stellwagen SERA Proposal Research Priorities from 2012
Habitat Recovery What recovery models (e.g., successional vs. multiple-stable states) are operant in the region and how resilient are seafloor habitats to disturbance?	Productivity Characterize and evaluate current and potential HMAs and HAPCs. Identify nursery and over-wintering habitats of species vulnerable to habitat alteration by fishing gear.	Gear Impacts What are the spatial patterns of diversity and do they vary in phase with increasing levels of disturbance (i.e., both natural and human-caused)?
Natural Disturbance In the absence of fishing, what are the dynamics of natural disturbance on seafloor habitat (especially biological components). In areas where natural disturbance is high, are signals of the impacts of fishing masked?		Habitat Recovery Do communities across disturbance regimes exhibit predictable shifts in state or are changes stochastic, especially as species distributions shift under climate change?
		Natural Disturbance What is the relationship between biodiversity and ecological resilience? What are the relationships between disturbance regime and persistence of rare species?

Overlap of SDHRA and SBNMS



Seafloor Observation System

- Fwd/Dwn GoPros
- Fwd/Dwn Video lights
- ROV video pilot cam

