

# Northeast Ocean Plan

New England Fishery Management Council

December 5, 2017

1. Correspondence/Reports (December 5-7, 2017)

#4b

Nick Napoli



# November 2017 RPB Meeting



## Day 1 - Data Workshop:

- Review and approve work plan for the continued development and maintenance of the NE Ocean Data Portal in 2018, including outreach to stakeholders/scientists
- 90 attendees in-person; additional 35 attendees on webex

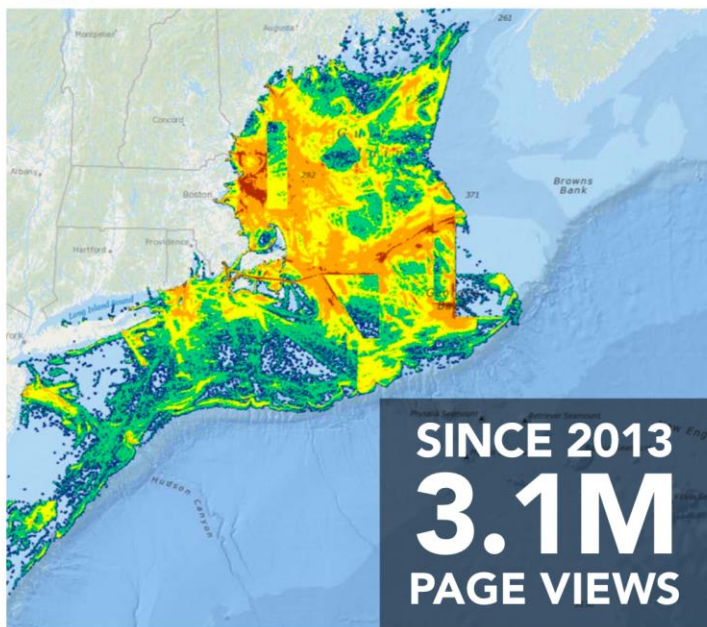
## Day 2 - Formal RPB Meeting:

- RPB discussion about the potential use of the Plan and Portal to inform a theoretical project in Gulf of Maine
- Tribal, subcommittee, and work group updates and work plan for 2018

## Key takeaways:

- The Portal is being used and is an important resource for agencies, stakeholders, and project proponents as an early source of information for potential projects
- The Plan's best practices provide opportunities for new projects to be well informed and there is a need for more structured communication as projects are proposed

# Portal Use



## COMMERCIAL FISHING DATA VIEWS [VESSEL MONITORING SYSTEM DATA]



March 10, 2017  
BOEM announces  
3 unsolicited bids  
for offshore wind  
permits in  
offshore  
MA and NY

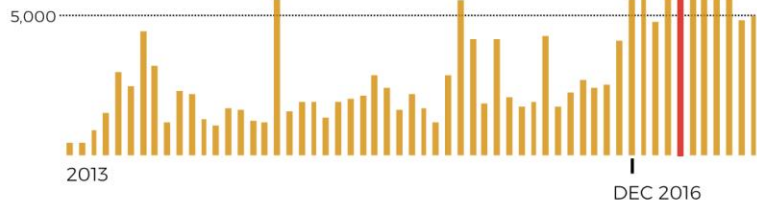
April 14, 18 - 20  
New England Fishery  
Management Council  
meetings



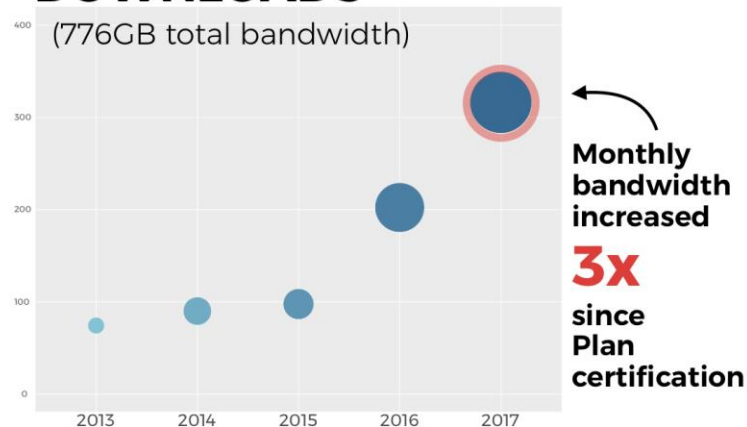
**NEARLY 10,000  
UNIQUE VISITORS**   
**IN APRIL 2017**

**HIGHEST  
MONTH  
EVER**

Plan  
certified



## INCREASING DATA DOWNLOADS



# Portal Use

- Surpassed previous highest annual visitation in early July
- Portal mentioned in interview with BOEM Acting Director and in many recent articles
- Increased use of certain data/services around relevant events/announcements and increased use by certain industries
- Case Studies – planning/management, regulatory/siting, educational

## NORTHEAST OCEAN DATA

Maps and data for ocean planning in the northeastern United States

[HOME](#)[MAPS](#) ▾[DATA](#) ▾[CASE STUDIES](#) ▾[ABOUT](#) ▾

### Applications of Northeast Ocean Data

The case studies featured on this page are examples of the many ways that public- and private-sector organizations use the Northeast Ocean Data Portal to accomplish diverse objectives. Icons indicate the ocean uses primarily related to each case study.

More case studies are in development and will be posted on an ongoing basis. [Follow us on Twitter](#) and [subscribe to our email list](#) to be notified of new case studies.



### Cost Savings for Connecticut's Ocean Planning Process

Data Portal User: Connecticut Dept. of Energy and Environmental Protection  
Location: Long Island Sound



### Leveraging Ocean Data for Economic and Ecological Vitality

Data Portal User: New York Department of State  
Location: New York State



### First Shellfish Farm in Atlantic Federal Waters Facilitated by the Northeast Ocean Data Portal

Data Portal User: Northeastern Massachusetts Aquaculture Center (NEMAC)  
Location: Off Gloucester, Massachusetts



### Balancing Deep-Sea Coral Protection and Commercial Fishing

Data Portal User: New England Fishery Management Council (NEFMC)  
Location: Gulf of Maine & offshore canyons, continental shelf, and seamounts



### Siting a New Wave-monitoring Buoy to Increase Maritime Safety and Improve Weather Forecasts

Data Portal User: Northeastern Regional Association of Coastal Ocean Observing Systems (NERACOOS)  
Location: Cape Cod Bay, Massachusetts



# Portal Use - Case Studies



## Planning and Management

- CT Blue Plan
- NY Geographic Information Gateway
- New England Fishery Management Council
- USCG waterways management, including aids to navigation
- US Navy identify areas for testing and potentially affected stakeholders
- NOAA charts

## Education and Research

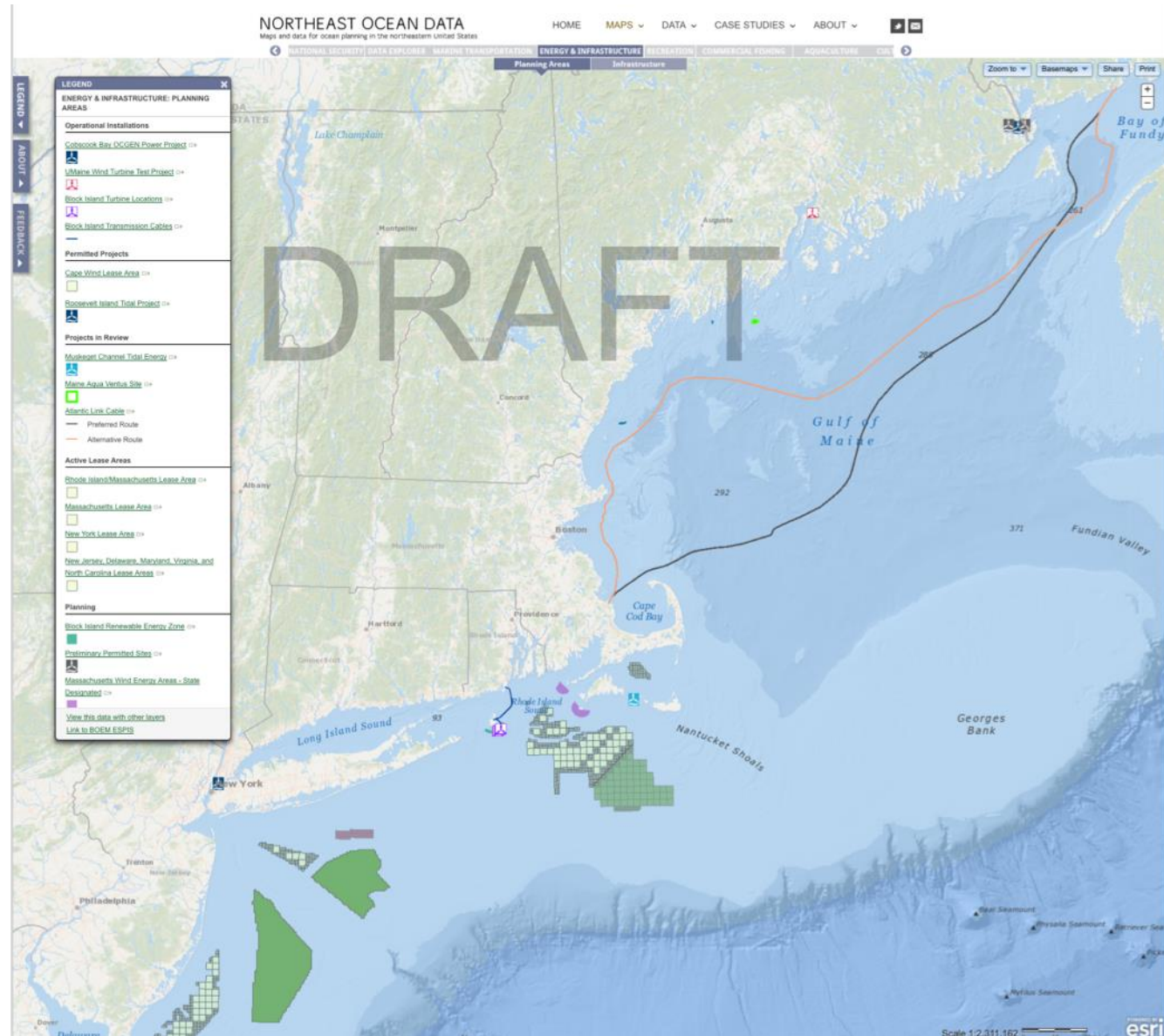
- Island Institute
- Pew
- UMass Dartmouth; UMass Boston
- UMaine
- Brown

## Regulatory and Siting

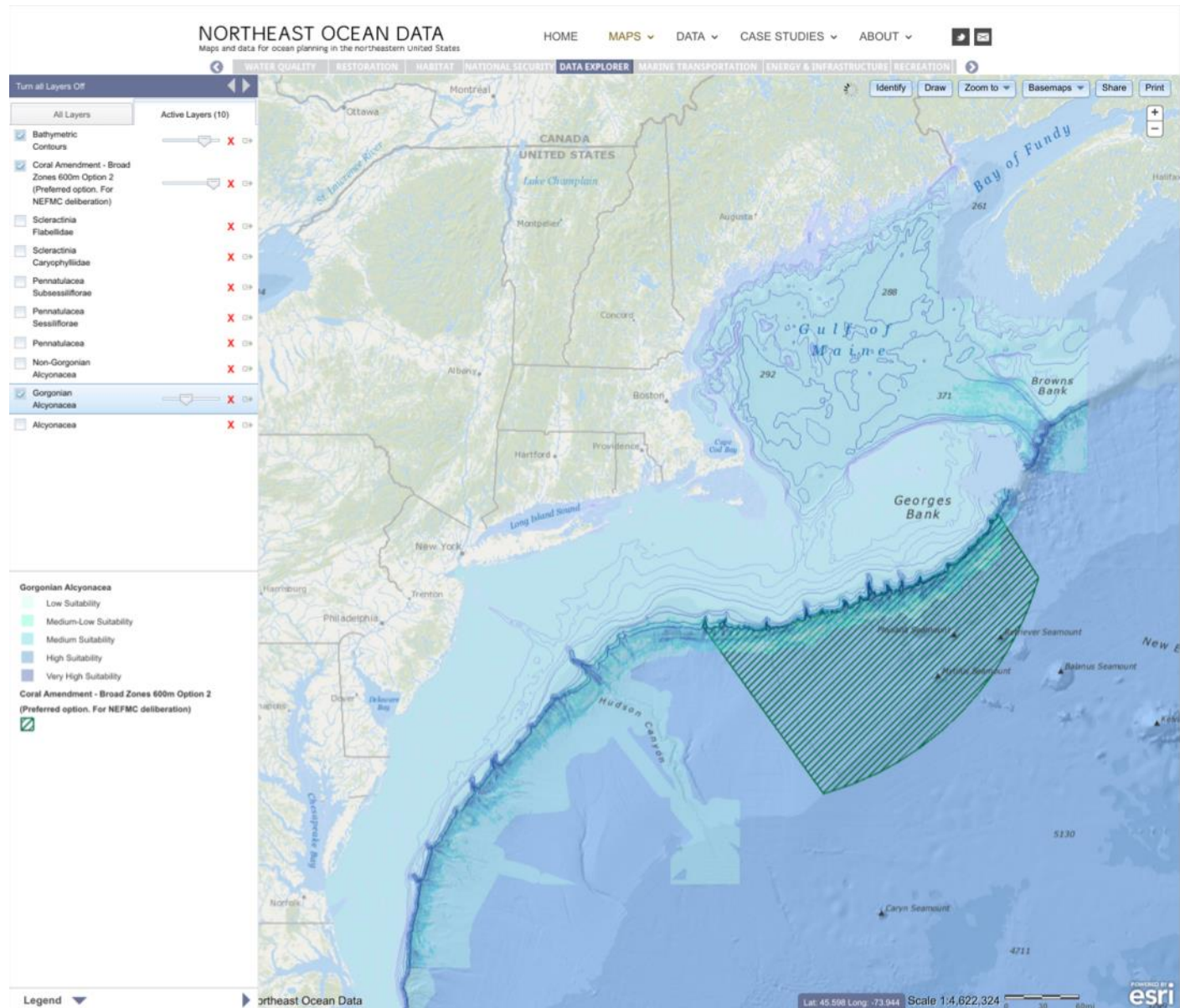
- States inform coastal effects test under CZM
- Consultants to support permitting and leasing or custom apps for regulated clients
- EPA to review other agency EA and EIS
- USACE regulatory division
- NOAA Office of Habitat Protection and Protected Resources Division
- BOEM Guidelines for Renewable Energy Activities
- NEMAC Mussel Farm in Mass Bay
- NERACOOS wave buoy in Cape Cod Bay
- Offshore wind developers
- Atlantic Link Proposed Cable Alternatives



# Proposed and Permitted Energy and Infrastructure



# Deep-Sea Coral Amendment Alternatives





The screenshot displays the 'NORTHEAST OCEAN DATA' web application. The main map area shows the Northeastern United States coastline, with a dense network of blue lines representing commercial vessel traffic. A large, semi-transparent 'DRAFT' watermark is centered over the map. On the left side, there is a legend titled 'MARINE TRANSPORTATION: COMMERCIAL TRAFFIC'. It includes a 'Select a Data Type:' dropdown set to 'Monthly', and three radio button options: '2013 Tug-Tow Vessel Density', '2015 Tug-Tow Vessel Transit Counts', and '2015 All Vessel Transit Counts'. Below these, a color-coded scale for '2015 All Vessel Transit Counts' is shown, ranging from dark blue (2-5) to red (> 100). The top of the page features a navigation bar with links for 'HOME', 'MAPS', 'DATA', 'CASE STUDIES', and 'ABOUT'. The bottom right corner includes a scale bar (1:2,311,162) and the Esri logo.



# Draft Fishing Data (for review)

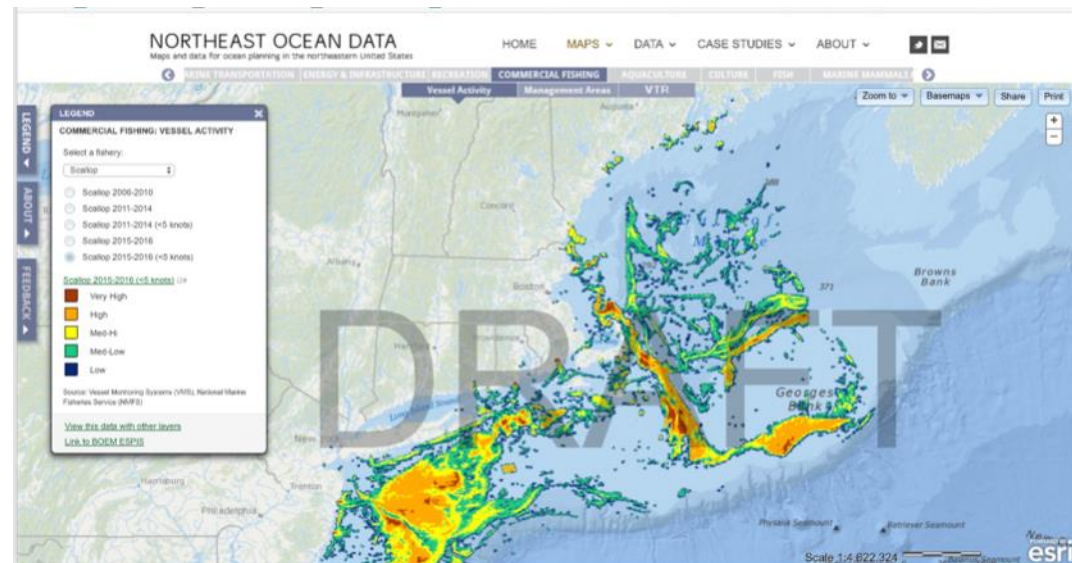
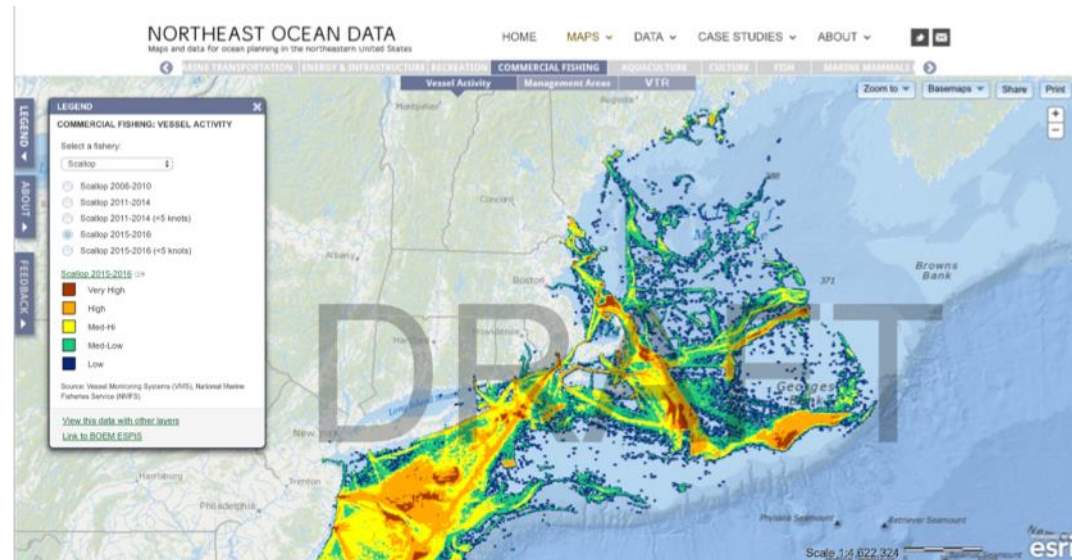


Commercial Fishing

## 2015-2016 VMS

w/ speed thresholds:

- Multispecies
- Monkfish
- Herring
- Scallop
- Surfclam/Ocean Quahog
- Squid
- Mackerel



# Draft Fishing Data (for review)



Commercial Fishing

## Communities at Sea

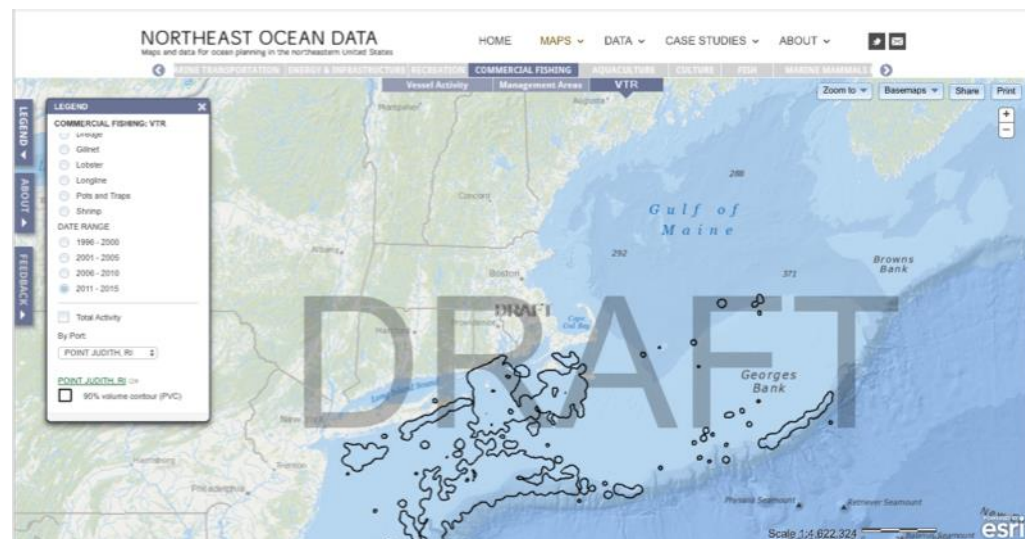
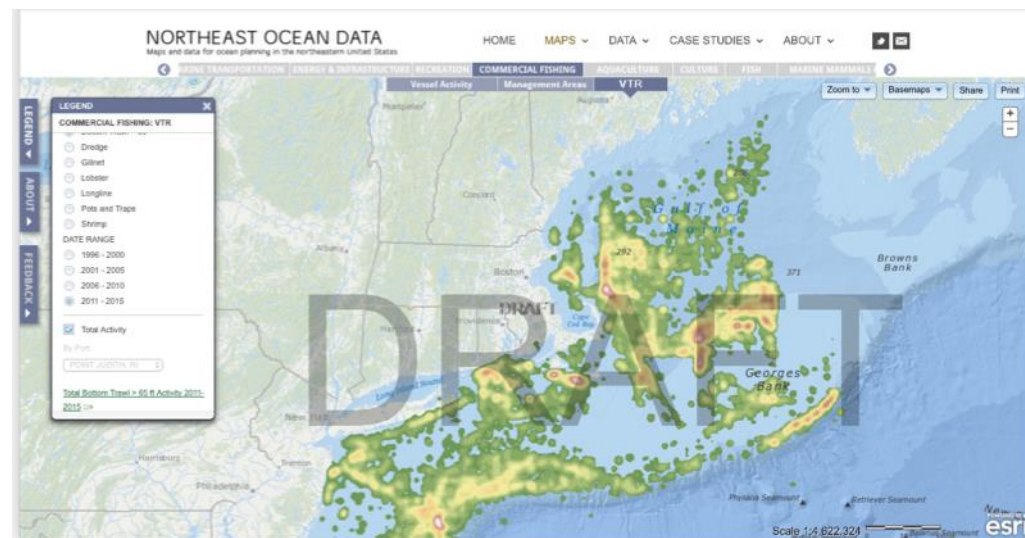
1996-2000

2001-2005

2006-2010

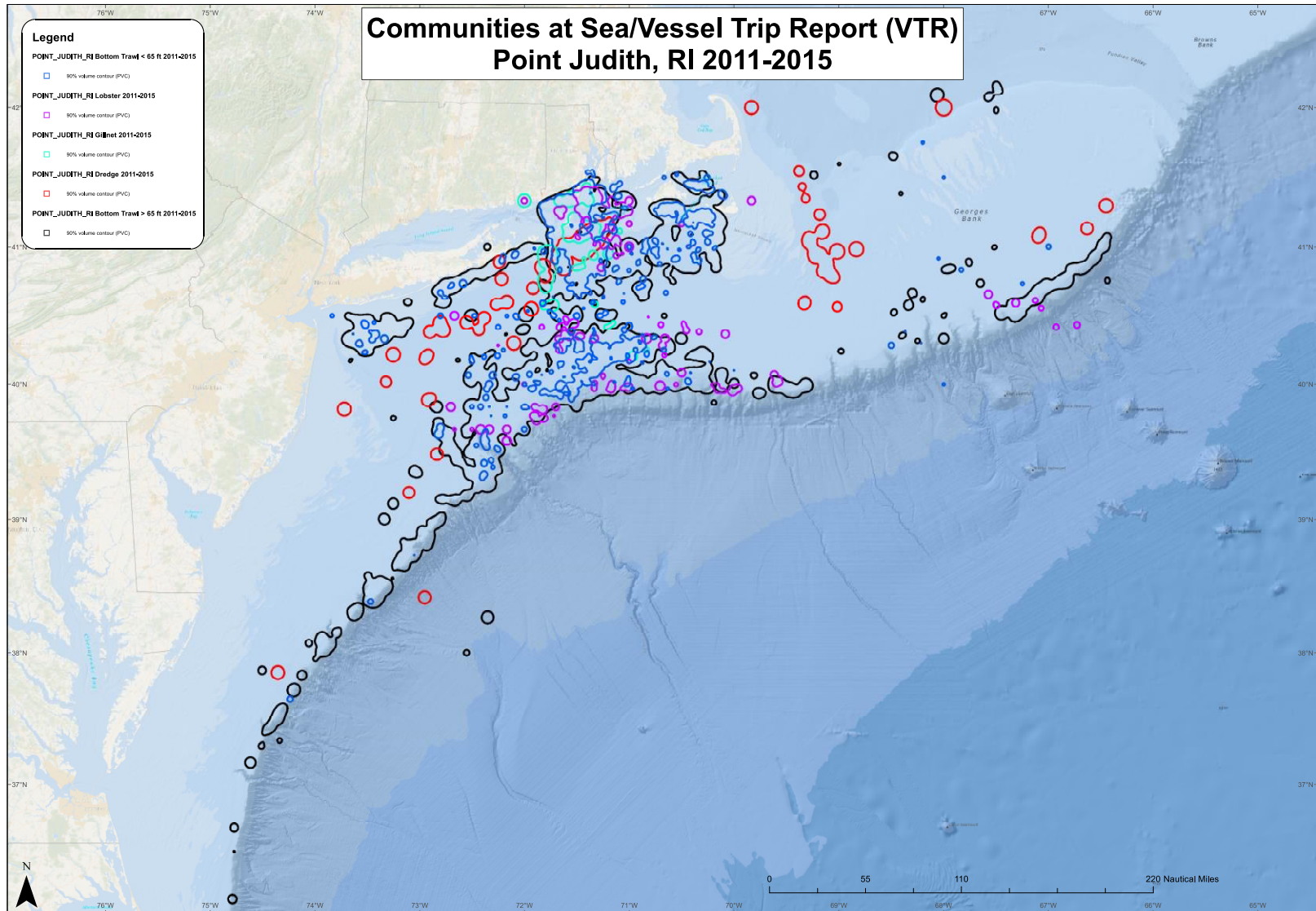
2011-2015

- Total effort by gear type
- Polygons representing 90% of the effort from each fishing port for each gear type





# Draft Fishing Data (for review)





# Draft Fishing Data

## Feedback To Date



Commercial Fishing

- *Take a little more time to resolve remaining questions and develop narratives about data limitations and appropriate use of products*
- *Remaining questions - VMS:*
  - *minor inaccuracies in scallop & clam maps*
  - *aggregation or disaggregation of herring, squid, mackerel*
  - *obtain data on highly migratory species*
  - *seasonality of fisheries?*
- *Remaining questions - Communities at Sea:*
  - *representativeness and utility of lobster data; distinction between lobster and pots and traps (fixed gear vs mobile gear)*
  - *clarity on methodology: home port vs landed port; use of coordinates from VTR; how confidentiality screening is applied to data*