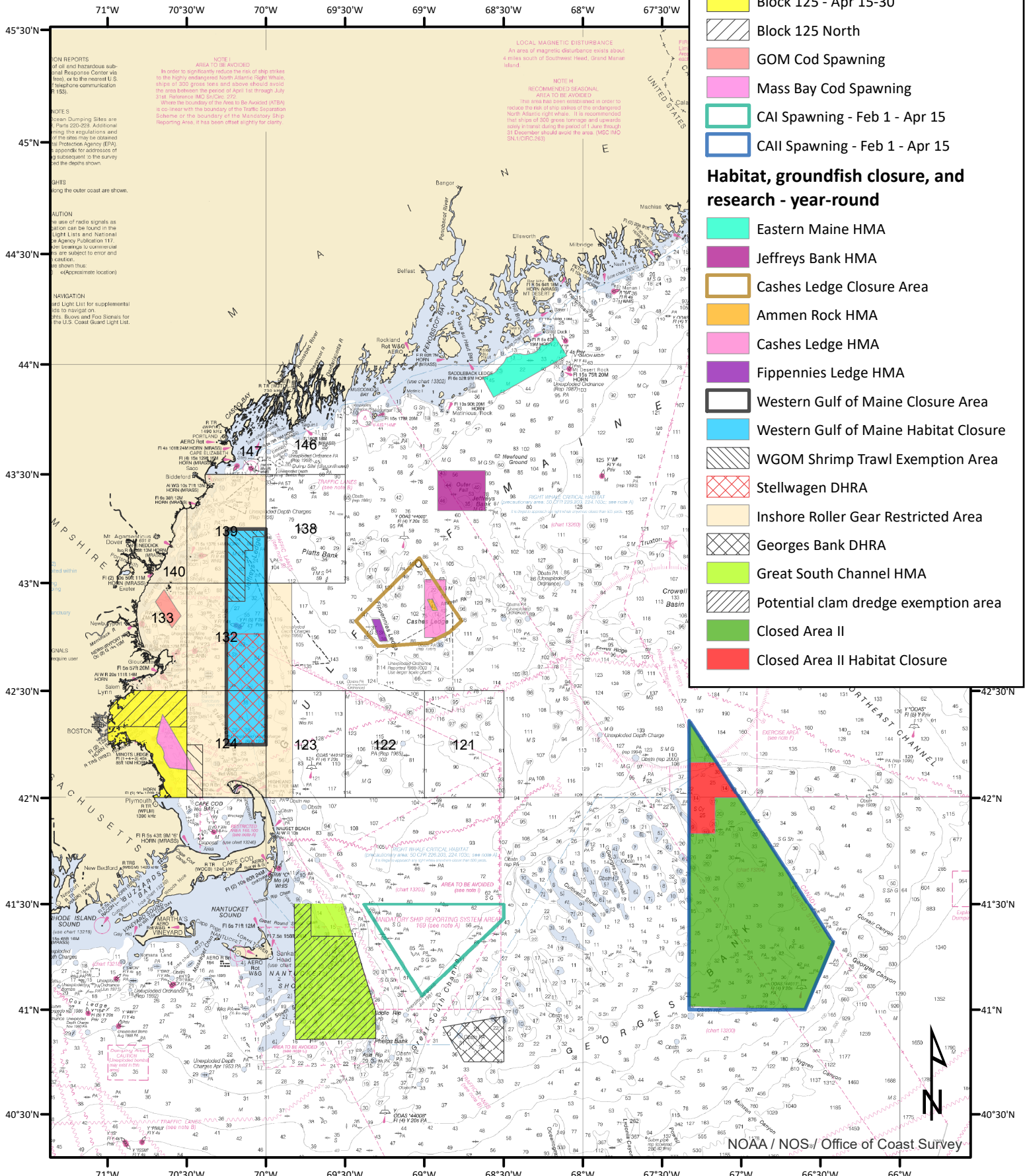
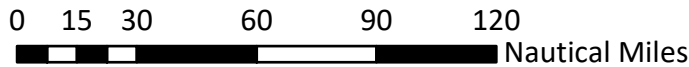


Omnibus Habitat Amendment 2 Measures approved by NMFS as of January 3, 2018



Spawning areas - seasonal (also includes labeled 30 minute blocks which are cod protection closures)

- Block 124 Southwest
- Block 125 - Apr 15-30
- Block 125 North
- GOM Cod Spawning
- Mass Bay Cod Spawning
- CAI Spawning - Feb 1 - Apr 15
- CAII Spawning - Feb 1 - Apr 15

Habitat, groundfish closure, and research - year-round

- Eastern Maine HMA
- Jeffreys Bank HMA
- Cashes Ledge Closure Area
- Ammen Rock HMA
- Cashes Ledge HMA
- Fippennies Ledge HMA
- Western Gulf of Maine Closure Area
- Western Gulf of Maine Habitat Closure
- WGOM Shrimp Trawl Exemption Area
- Stellwagen DHRA
- Inshore Roller Gear Restricted Area
- Georges Bank DHRA
- Great South Channel HMA
- Potential clam dredge exemption area
- Closed Area II
- Closed Area II Habitat Closure