

Table 1. MRIP Pre-calibrated Gulf of Maine Recreational Catch Estimates<sup>1</sup>

	FY 2017	FY 2017	FY 2018
	May 1 - Apr. 30	May 1 - Aug. 30	May 1 - Aug. 30
	(All waves)	(Wave's 3, 4)	(Wave's 3, 4)
Cod/haddock Angler Trips <sup>2</sup>	168,076	153,290	110,354 (-28%)
Cod Catch (numbers, a+b1+b2)	814,496	788,310	464,540 (-41%)
Cod Kept/Released Dead (numbers, a+b1)	14,072	12,977	1,759 (-86%)
Cod Released Alive (numbers, b2)	800,425	775,333	462,781 (-40%)
Cod Removals (numbers, a+b1+(0.15*b2))	134,136	129,277	71,176 (-45%)
Cod Removals (weight <sup>3</sup> , mt)	246	238	142 (-40%)
Cod Avg. Catch Per Trip (numbers)	4.8	5.1	4.2 (-18%)
Haddock Catch (numbers, a+b1+b2)	1,356,415	1,279,216	993,813 (-22%)
Haddock Kept (numbers, a+b1)	516,805	482,445	449,311 (-7%)
Haddock Released (numbers, b2)	839,610	796,771	544,501 (-32%)
Haddock Removals (numbers, a+b1+(b2*season/size release mortality))	953,007	887,126	712,444 (-20%)
Haddock Removals (weight <sup>3</sup> , mt)	795	756	607 (-20%)
Haddock Avg. Catch Per Trip (numbers)	8.1	8.3	9.0 (+7%)

<sup>1</sup>Source: Available MRIP data (pre-calibrated) as of Oct. 12, 2018

<sup>2</sup>Number of angler trips that targeted and/or caught cod or haddock

<sup>3</sup>All weights are based on round weights calculated from MRIP length frequencies and length to weight equations used in the assessments.

Table 2. MRIP Pre-calibrated Gulf of Maine Angler Trips by Mode

	FY 2017		FY 2017		FY 2018	
	May 1 - April 30 (All Waves)		May 1 - Aug. 30 (Wave's 3, 4)		May 1 - Aug. 30 (Wave's 3, 4)	
	Cod/haddock <sup>1</sup>	All <sup>2</sup>	Cod/haddock <sup>1</sup>	All <sup>2</sup>	Cod/haddock <sup>1</sup>	All <sup>2</sup>
Head	45,407	75,890	39,325	65,634	37,560	56,190
Charter	19,502	94,155	18,928	84,799	12,233	68,514
Private	103,167	1,135,333	94,977	885,231	60,354	812,870
Shore	-	652,066	-	439,168	207	450,733
	168,076	1,957,444	153,230	1,474,832	110,354	1,388,307

<sup>1</sup>Number of angler trips that targeted and/or caught cod or haddock

<sup>2</sup>All angler trips in the Gulf of Maine

Table 3. MRIP Precalibrated Gulf of Maine Cod Recreational Catch Estimates by Mode

	FY 2017	FY 2017	FY 2018
	May 1 - Apr. 30	May 1 - Aug. 30	May 1 - Aug. 30
Mode	(All waves)	(Wave's 3, 4)	(Wave's 3, 4)
<b>Head</b>			
Cod Catch (numbers, a+b1+b2)	78,918	67,856	62,944 (-7%)
Cod Kept/Released Dead (numbers, a+b1)	1,208	1,051	540 (-49%)
Cod Released Alive (numbers, b2)	77,710	66,805	62,403 (-7%)
Cod Removals (numbers, a+b1+(0.15*b2))	12,865	11,072	9,900 (-11%)
Cod Avg. Catch Per Angler Trip (numbers) <sup>1</sup>	1.7	1.7	1.7 (-3%)
<b>Charter</b>			
Cod Catch (numbers, a+b1+b2)	117,875	115,615	23,508 (-80%)
Cod Kept/Released Dead (numbers, a+b1)	432	432	478 (+10%)
Cod Released Alive (numbers, b2)	117,443	115,183	23,031 (-80%)
Cod Removals (numbers, a+b1+(0.15*b2))	18,048	17,709	3,933 (-78%)
Cod Avg. Catch Per Angler Trip (numbers) <sup>1</sup>	6.0	6.1	1.9 (-69%)
<b>Private</b>			
Cod Catch (numbers, a+b1+b2)	617,703	604,839	377,881 (-38%)
Cod Kept/Released Dead (numbers, a+b1)	12,431	11,494	535 (-95%)
Cod Released Alive (numbers, b2)	605,272	593,344	377,347 (-36%)
Cod Removals (numbers, a+b1+(0.15*b2))	103,222	100,496	57,137 (-43%)
Cod Avg. Catch Per Angler Trip (numbers) <sup>1</sup>	6.0	6.4	6.3 (-2%)

<sup>1</sup>Based on the number of angler trips by mode that targeted and/or caught cod or haddock

Table 4. MRIP Precalibrated Gulf of Maine Haddock Recreational Catch Estimates by Mode

	FY 2017	FY 2017	FY 2018
	May 1 - Apr. 30	May 1 - Aug. 30	May 1 - Aug. 30
Mode	(All waves)	(Wave's 3, 4)	(Wave's 3, 4)
<b>Head</b>			
Haddock Catch (numbers, a+b1+b2)	277,807	242,555	353,276 (+46%)
Haddock Kept/Released Dead (numbers, a+b1)	100,848	88,517	166,018 (+87%)
Haddock Released Alive (numbers, b2)	176,959	154,039	187,258 (+21%)
Haddock Removals (numbers, a+b1+(b2*season/size release mortality))	192,778	166,753	256,520 (+53%)
Haddock Avg. Catch Per Angler Trip (numbers) <sup>1</sup>	6.1	6.2	9 (+52%)
<b>Charter</b>			
Haddock Catch (numbers, a+b1+b2)	220,401	212,183	176,855 (-17%)
Haddock Kept/Released Dead (numbers, a+b1)	94,935	92,291	81,445 (-12%)
Haddock Released Alive (numbers, b2)	125,467	119,891	95,410 (-20%)
Haddock Removals (numbers, a+b1+(b2*season/size release mortality))	160,119	153,184	127,557 (-17%)
Haddock Avg. Catch Per Angler Trip (numbers) <sup>1</sup>	11.3	11.2	14.5 (+29%)
<b>Private</b>			
Haddock Catch (numbers, a+b1+b2)	858,206	824,479	463,681 (-44%)
Haddock Kept/Released Dead (numbers, a+b1)	321,022	301,638	201,848 (-33%)
Haddock Released Alive (numbers, b2)	537,183	522,841	261,833 (-50%)
Haddock Removals (numbers, a+b1+(b2*season/size release mortality))	600,110	567,189	328,368 (-42%)
Haddock Avg. Catch Per Angler Trip (numbers) <sup>1</sup>	8.3	8.7	7.7 (-11%)

<sup>1</sup>Based on the number of angler trips by mode that targeted and/or caught cod or haddock

Table 5. MRIP Pre-calibrated George's Bank Recreational Catch Estimates<sup>1</sup>

	FY 2016	FY 2017
	May 1 - Apr. 30	May 1 - Apr. 30
	(All waves)	(All waves)
Cod Catch (numbers, a+b1+b2)	241,776	19,676
Cod Kept/Released Dead (numbers, a+b1)	151,075	14,064
Cod Released Alive (numbers, b2)	90,701	5,612
Cod Removals (numbers, a+b1+(0.30*b2))	178,285	15,748
Cod Removals (weight <sup>3</sup> , mt)	281	53

<sup>1</sup>Source: Available MRIP data (pre-calibrated) as of Oct. 12, 2018

<sup>2</sup>Number of angler trips that targeted and/or caught cod or haddock

<sup>3</sup>All weights are based on round weights calculated from MRIP length frequencies and length to weight equations used in the assessments.

Table 6. MRIP Pre-calibrated George's Bank Recreational Catch Estimates (FY2018)<sup>1</sup>

	FY 2017	FY 2018
	May 1 - Aug. 30	May 1 - Aug. 30
	(Wave's 3, 4)	(Wave's 3, 4)
Cod Catch (numbers, a+b1+b2)	13,002	7,530
Cod Kept/Released Dead (numbers, a+b1)	6,835	3,348
Cod Released Alive (numbers, b2)	6,166	4,181
Cod Removals (numbers, a+b1+(0.30*b2))	8,685	4,602
Cod Removals (weight, mt)	?	?

<sup>1</sup>Source: Available MRIP data (pre-calibrated) as of Oct. 12, 2018

<sup>2</sup>Number of angler trips that targeted and/or caught cod or haddock

Figure 1. GOM Cod MRIP Total Catch (A+B1+B2) Comparison

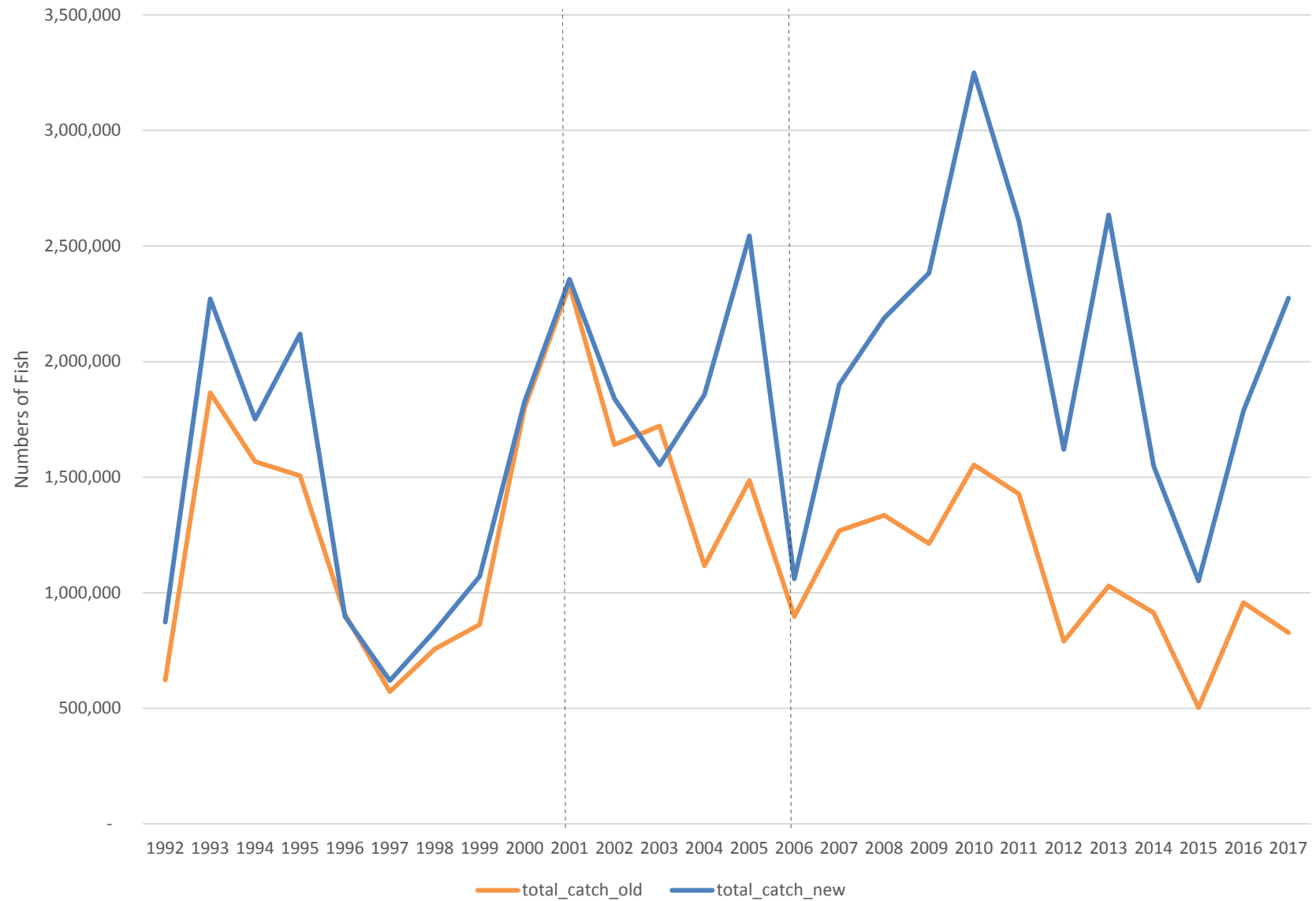


Figure 2. GOM Cod MRIP Landings (A+B1) Comparison

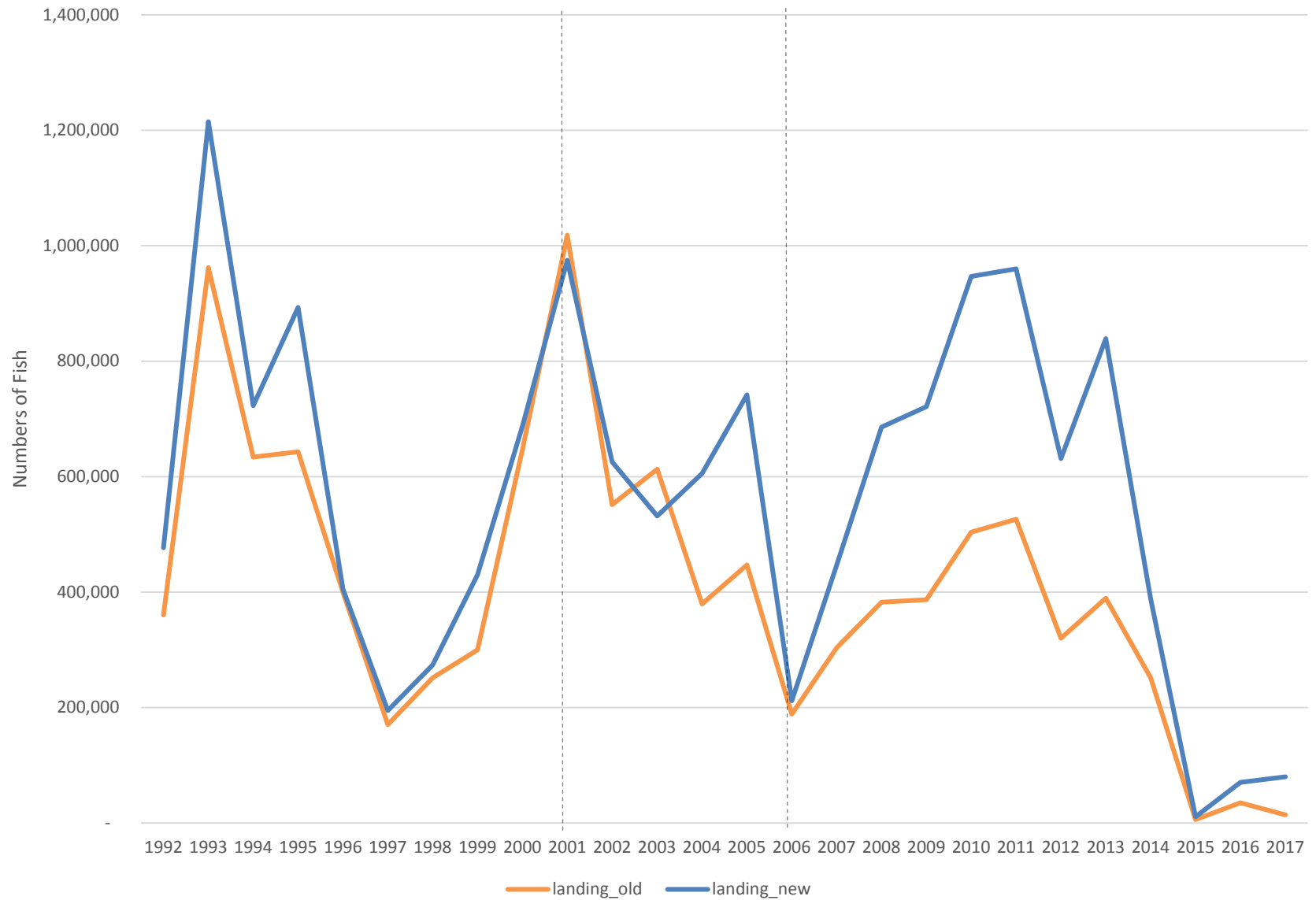


Figure 3. GOM Haddock MRIP Total Catch (A+B1+B2) Comparison

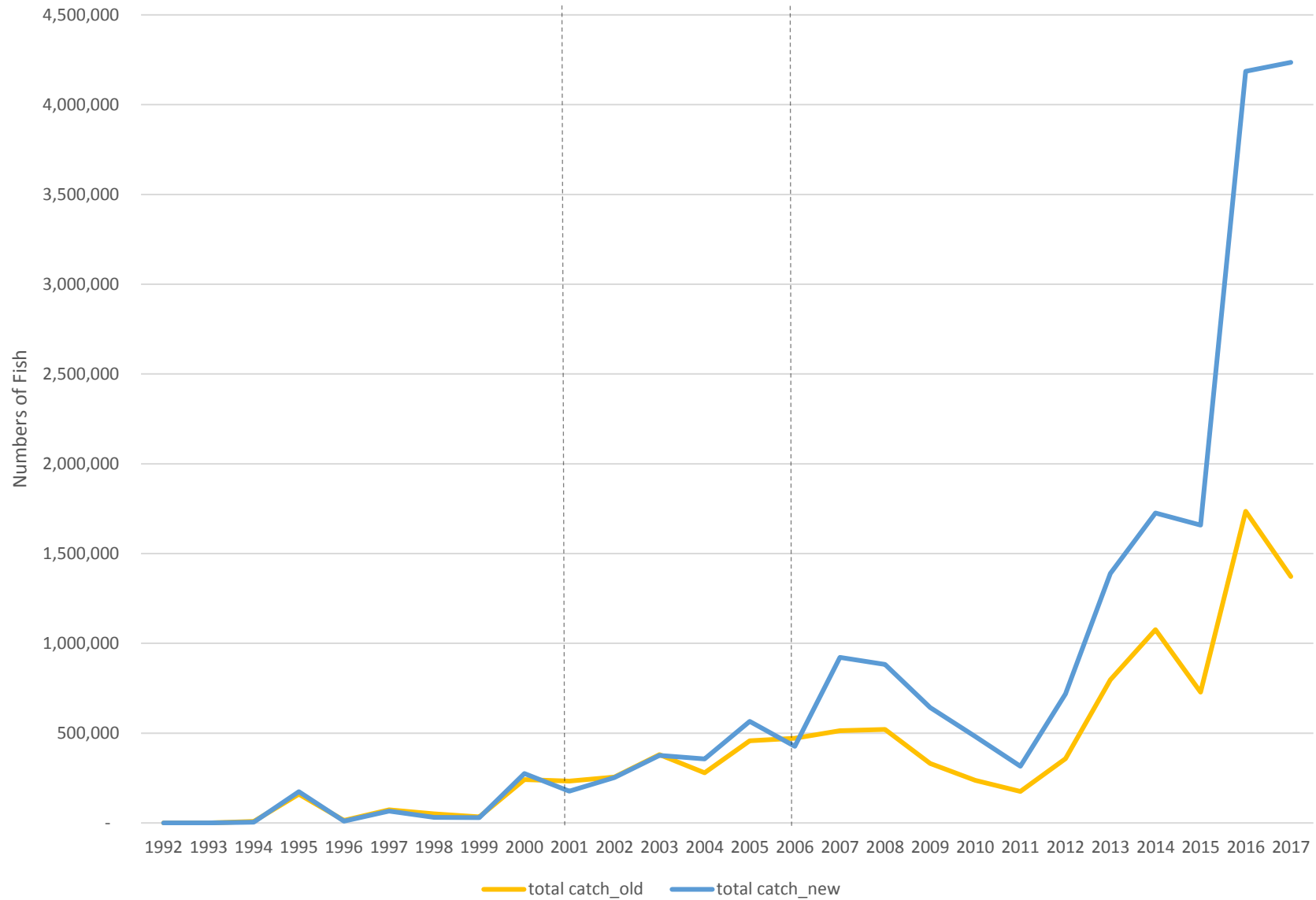
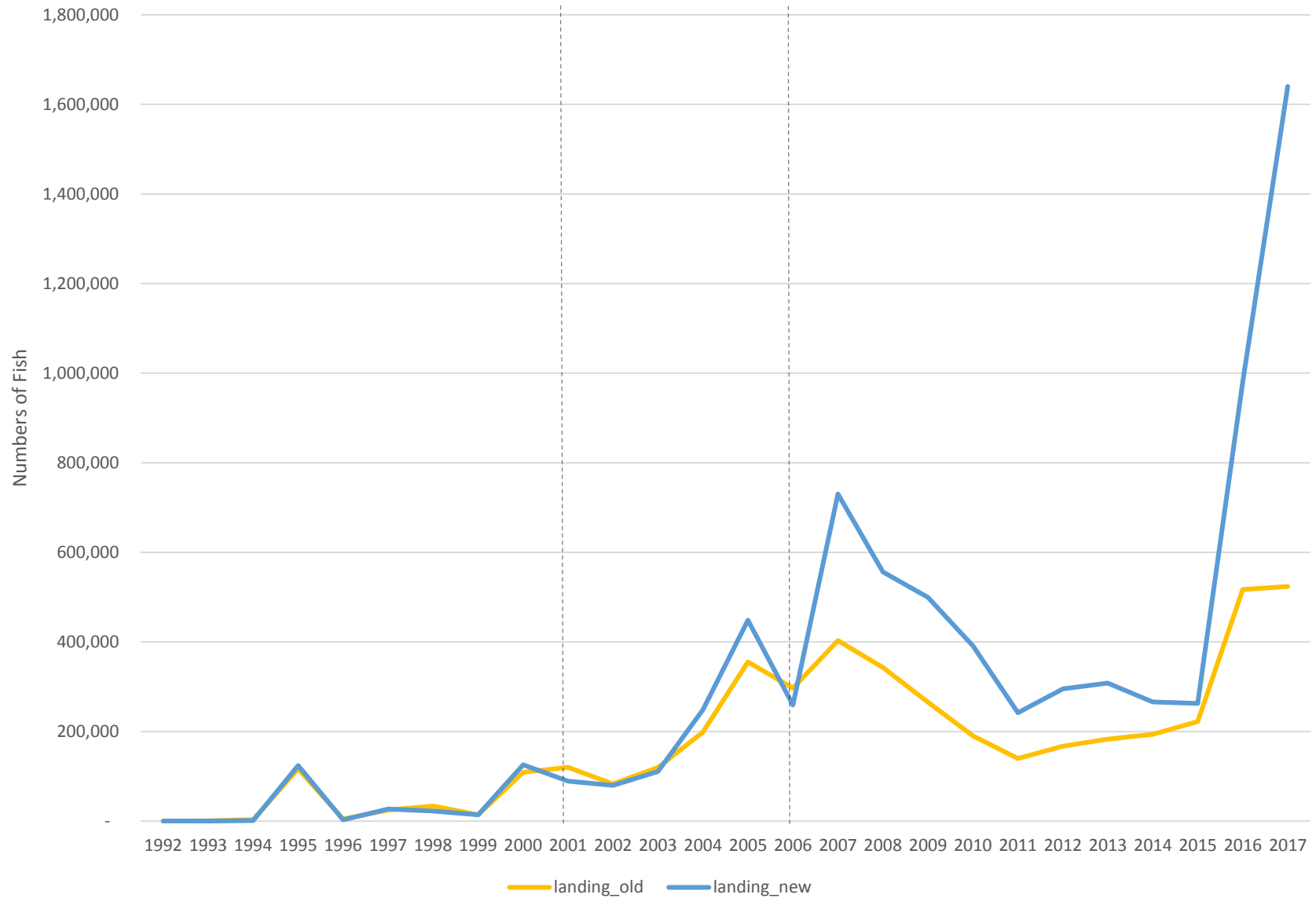




Figure 4. GOM Haddock MRIP Landings (A+B1) Comparison



# FOR INFORMATIONAL PURPOSES ONLY

## Gulf of Maine Cod

Table 1. Gulf of Maine Cod Existing Rec/Com Allocation (GARM III, Amendment 16)

Year	Rec Landings (A+B1)	Rec Discard Mortality (1,000's of fish)	Com Landings	Com Discard Mortality	Total Mortality	Rec Share
2001	1,018	0	1,187	382	2,587	0.394
2002	551	0	898	383	1,832	0.301
2003	611	0	870	277	1,758	0.348
2004	531	0	799	99	1,429	0.372
2005	584	0	856	65	1,505	0.388
2006	250	0	761	114	1,125	0.222
						<b>0.337</b>

## Gulf of Maine Haddock

Table 3. Gulf of Maine Haddock Existing Rec/Com Allocation (GARM III, Amendment 16)

Year	Rec Landings (A+B1)	Rec Discard Mortality (1,000's of fish)	Com Landings	Com Discard Mortality	Total Mortality	Rec Share
2001	120	0	514	39	673	0.179
2002	83	0	507	30	620	0.134
2003	120	0	577	25	722	0.166
2004	279	0	528	31	838	0.333
2005	445	0	531	42	1,017	0.437
2006	278	0	346	74	697	0.399
						<b>0.275</b>

Table 2. Gulf of Maine Cod Preliminary Evaluation of Rec/Com Allocation Using New MRIP Landings and Discards, and Updated Commercial Landings and Discards (2017 Assessment Update)

Year	Rec Landings (A+B1)	Rec Discard Mortality (1,000's of fish)	Com Landings	Com Discard Mortality	Total Mortality	Rec Share
2001	975	207	1,168	591	2,941	0.402
2002	626	182	882	410	2,100	0.385
2003	532	153	844	417	1,946	0.352
2004	606	188	766	546	2,105	0.377
2005	742	270	832	225	2,070	0.489
2006	212	127	733	299	1,371	0.247
						<b>0.375</b>

Table 4. Gulf of Maine Haddock Preliminary Evaluation of Rec/Com Allocation Using New MRIP Landings and Discards, and Updated Commercial Landings and Discards (2017 Assessment Update)

Year	Rec Landings (A+B1)	Rec Discard Mortality (1,000's of fish)	Com Landings	Com Discard Mortality	Total Mortality	Rec Share
2001	89	?	556	17	?	?
2002	80	?	531	22	?	?
2003	110	?	579	21	?	?
2004	249	50	528	13	840	0.356
2005	449	73	539	31	1,091	0.478
2006	259	71	348	40	719	0.460
						<b>?</b>