

Commercial Fishing Transit Lanes & Offshore Wind Energy in the New York Bight

Responsible Offshore Development Alliance
NEMFC Meeting - January 29, 2019

Responsible Offshore Development Alliance (RODA)

- * Coalition of fishing industry associations and companies
 - * Over 120 vessels
 - * Spanning 9 states
 - * Representing ~30 fisheries
- * Aim to represent a unified voice on issues of mutual interest related to offshore development
- * Engage with BOEM, developers, NMFS, Councils and other partners to provide a platform for achieving compatible use of development areas

RODA – Ørsted Partnership

- * Joint industry task force to explore new approaches to project design and operations
- * Promote coexistence and collaboration of offshore wind energy and commercial fishing
- * Encouraging other developers to join RODA-Ørsted task force



RODA @RODAfisheries · Jan 17

Our new partnership with @OrstedNA is a significant step forward for dialogue between commercial fishermen & #OffshoreWind.



Pinned Tweet



Ørsted North America @OrstedNA · Jan 17

We're dedicated to working with fishermen to ensure #offshorewind benefits everyone in the community. That's why we're excited to announce our partnership with @RODAfisheries, which will enable a platform of ongoing communications to create solutions together!



Regional Science and Monitoring Framework

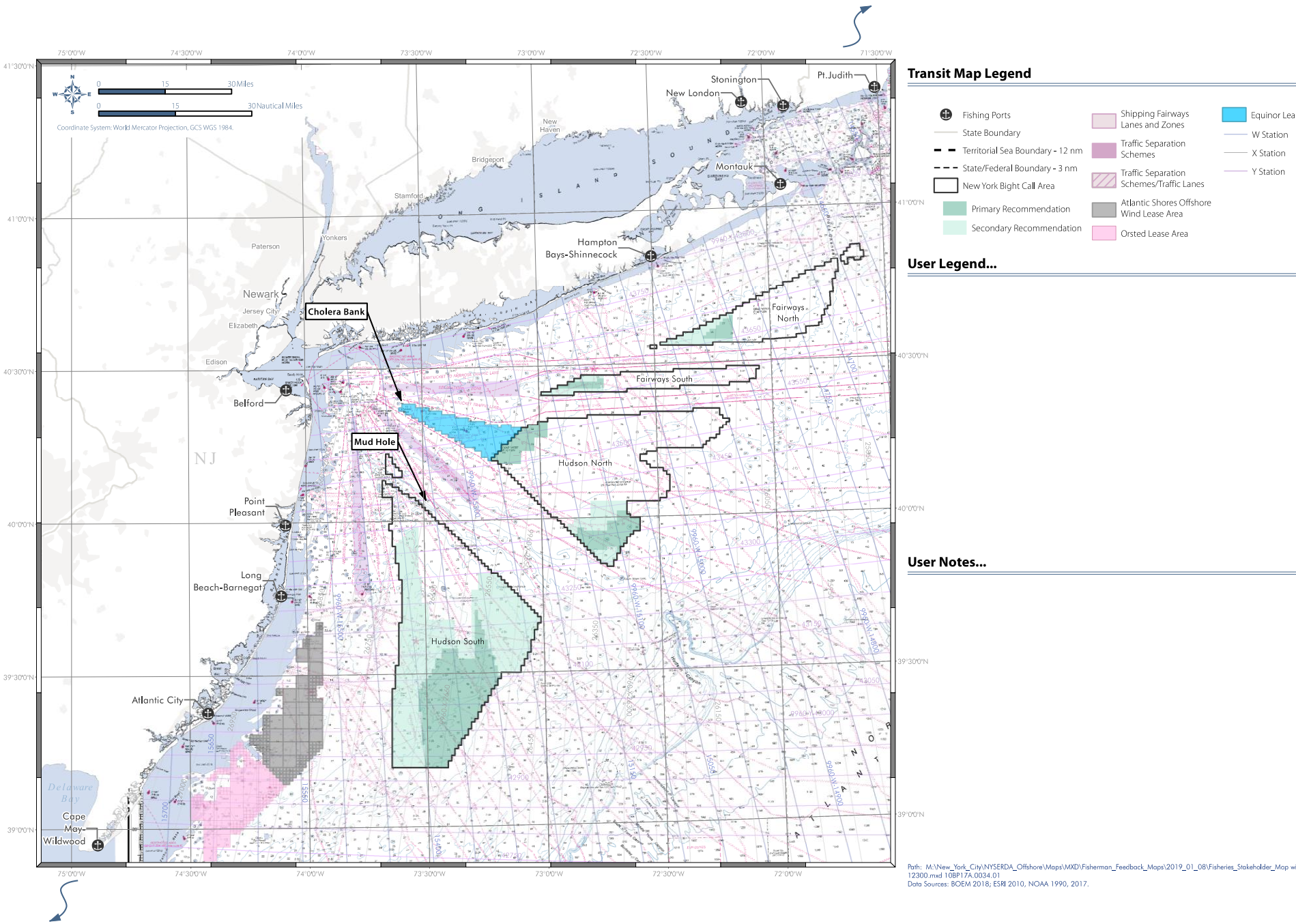
- * Evident need for increased research on the potential impacts of offshore wind energy projects
- * Unbiased, non-duplicative, research efforts
- * Exploring options to get a regional framework established quickly
 - * NMFS working on this prior to government shut down
 - * Expected participation from NMFS, BOEM, USCG, the fishing industry and wind energy developers

NE Transit Lanes Update

- * Workshop held December 3rd 2018
- * Identified general location and direction of lanes adequate for *most* fisheries
- * Width of transit lanes TBD
 - * Fishermen request 4nm
 - * Developers 1-2nm
 - * USCG on hold pending furlough

Fishermen Survey Tool for Transit Lane Locations

- * RODA as intermediary partner to facilitate discussion on the least intrusive placement of transit lanes in the NY Bight (prior to delineation of new lease areas)
- * Map for fishermen to annotate with vessel routes and general locations of important fishing grounds
 - * Seasonal and fishery specific maps encouraged
 - * Online version available on RODA website
- * RODA will compile survey data to ensure privacy and anonymity
- * Recommendations to BOEM of preferred transit lane locations from surveys and discussions during March 2019 transit workshop

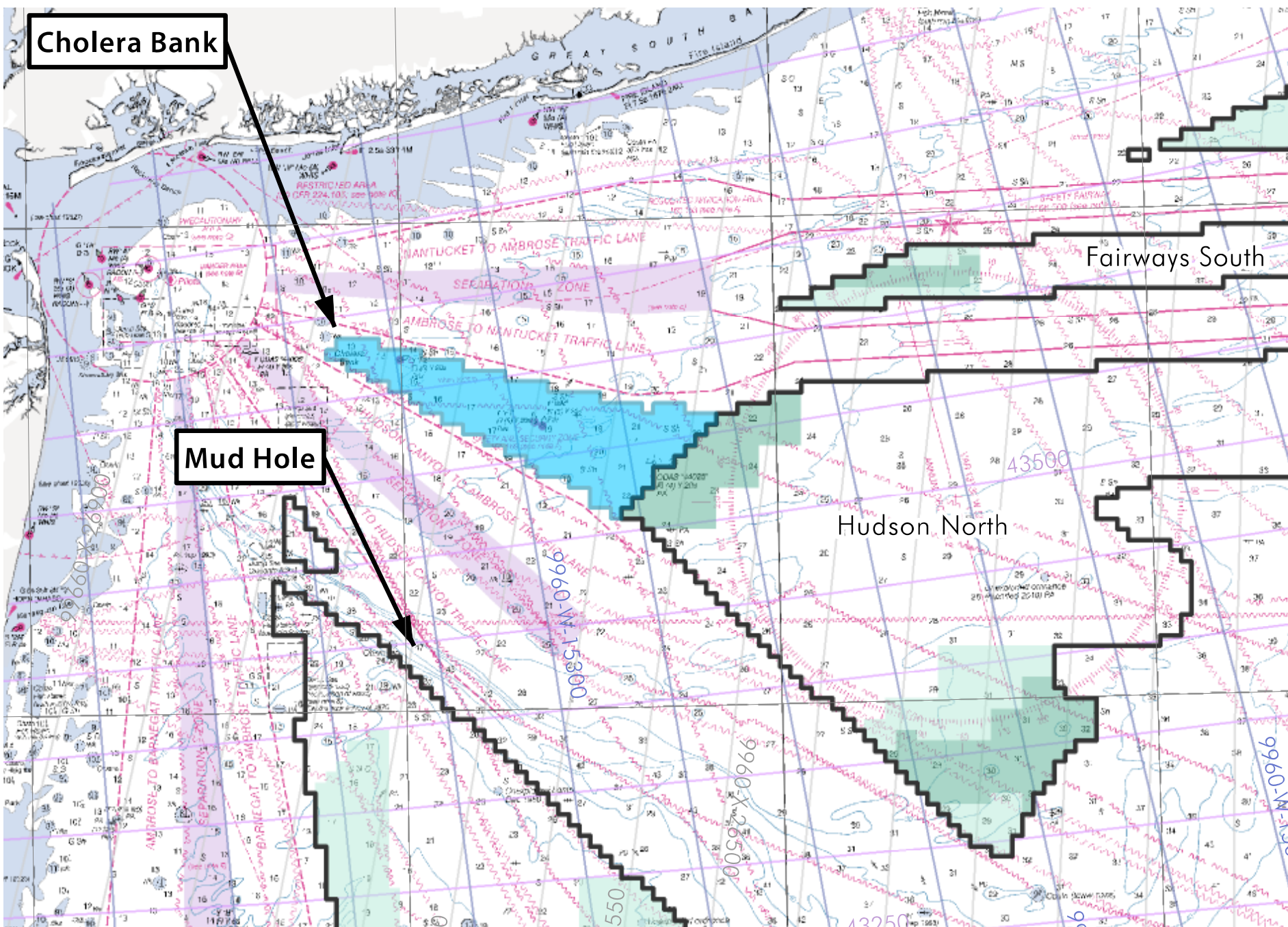


Cholera Bank

Mud Hole

Fairways South

Hudson North



NMFS – RODA Workshop

March 27th 2019

- * Port Jefferson, NY
- * Presentations on roles of New York State, BOEM and USCG in designating transit corridors
- * Survey data, VMS data and AIS data to be compiled and presented
- * Discussion of route options and design objectives to maximize interest of all parties



Department of
Environmental
Conservation

NYSERDA



Responsible Offshore Development Alliance

→ Workshop Report
advising where transit
lanes would provide
greatest value

Thank you!

- * Find the Fishermen Survey map tool at rodafisheries.org
- * Submit completed surveys to lane@rodafisheries.org
Or by mail to RODA
P.O. Box 66704
Washington D.C. 20035
- * NY Transit Lane workshop March 27th 2019 – registration required