



EBFM Communications Update

July 21, 2020



Project Review

Tasks Completed

- Stakeholder interviews (154 contacted, 59 interviews)
- Identification of barriers & benefits
- 1 infographic
- 3 presentations

Tasks In Progress

- 1 infographic
- 5 brochures
- 1 presentation

Tasks Upcoming

- 1 information video



Infographic – the Georges Bank EPU

- Defines the boundaries of the EPU and why it was chosen for the eFEP.
- Management considerations
- What is being fished, how, and where?
- What are the physical, chemical, and biological characteristics of the ecosystem?

The Georges Bank Ecological Production Unit (EPU)

Why Georges Bank?

Ecological Production Units are areas on the continental shelf that have unique characteristics of: **bathymetry, bottom sediments, temperature, salinity, and primary production from phytoplankton.** The boundaries of the Georges Bank EPU are defined by these unique characteristics and extend to the continental shelf on its east and south sedges, to Natucket Shoals on the west, and to the southern edge of Maine on the North.

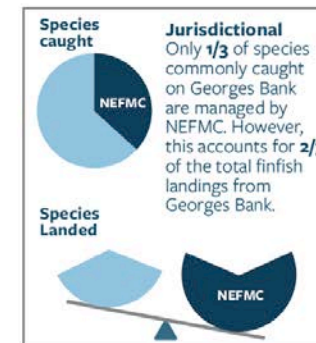


The Georges Bank EPU is displayed as the transparent green area on the map.

Georges Bank was chosen for the example Fishery Ecosystem Plan (eFEP) because a **large amount of data** has been collected and researched conducted about the physical environment and fish and other animals that live there. In addition, computer models of the ecosystem have been researched and developed. Because managers and scientists are familiar with the ecosystem, it will be easier for them to predict how it will respond to a FEP.

Management Considerations

Fisheries management on Georges Bank is complex due to vulnerable habitats, variety of fishing gear types used, and the fact the fish species caught there are managed by a multitude of agencies.



Management Options

- 1 - Only set catch ceilings for species managed exclusively or jointly by NEFMC.
- 2 - **Develop a cooperative and collaborative approach with other management agencies and set ceilings for the portion caught on Georges Bank.***
- 3 - Petition for sole management of all stocks on Georges Bank.

*most likely option



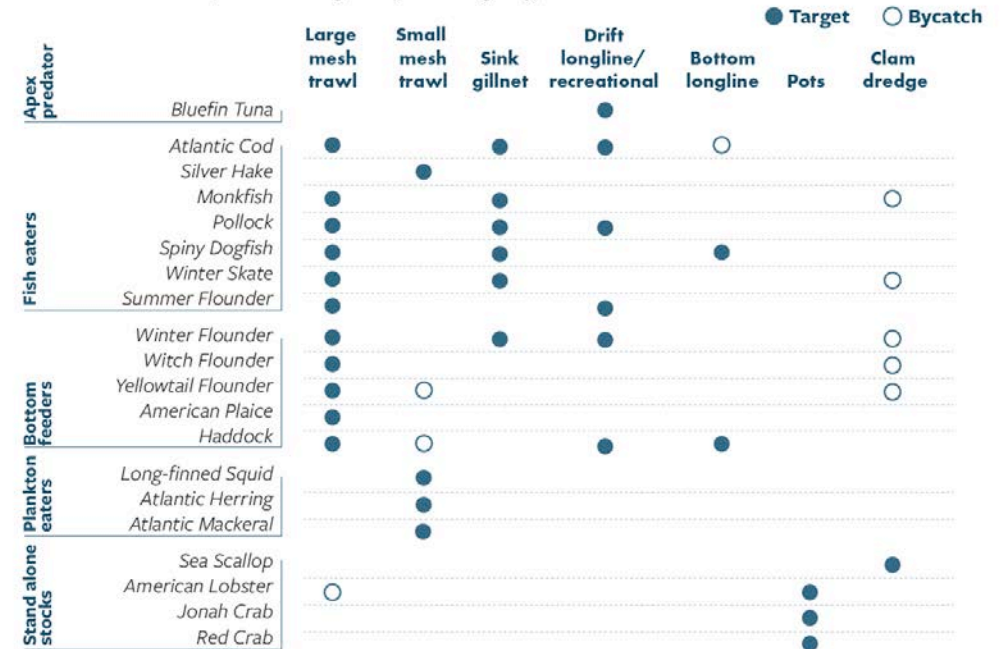
An important goal of this process is to maintain existing access to fish stocks on Georges Bank. If you have a current permit and have fished the EPU, you will be able to retain your ability to fish in the EPU.

Infographic – the Georges Bank EPU

- Defines the boundaries of the EPU and why it was chosen for the eFEP.
- Management considerations
- What is being fished, how, and where?
- What are the physical, chemical, and biological characteristics of the ecosystem?

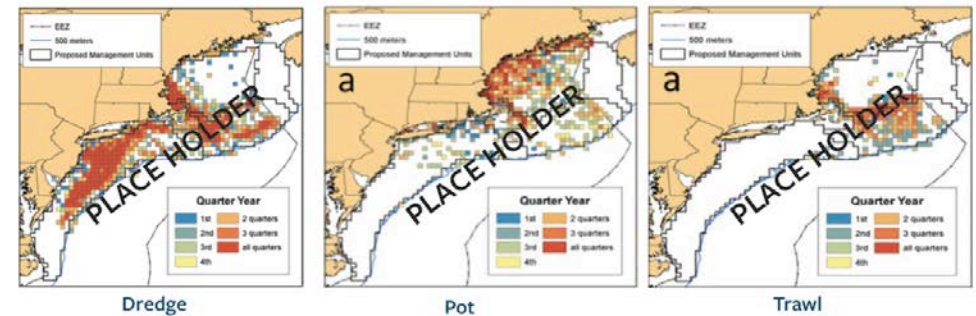
What Is Being Caught on Georges Bank?*

The table below shows the species of fish that are commonly caught on Georges Bank on the type of gear used to catch them. Also indicated is if a fish species is the target or bycatch of a gear type.



* For a complete list of the 82 species caught on Georges Bank, please see table 15 of the Draft Example Fishery Ecosystem Plan for Georges Bank.

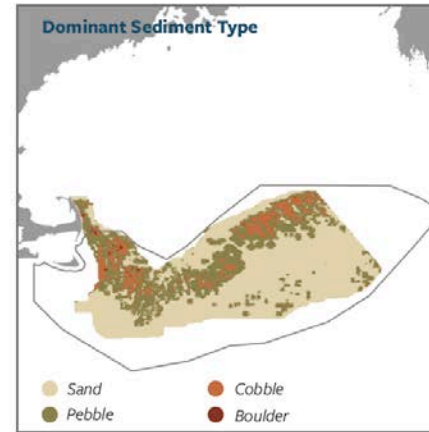
Where Is Fishing Happening By Gear Type?



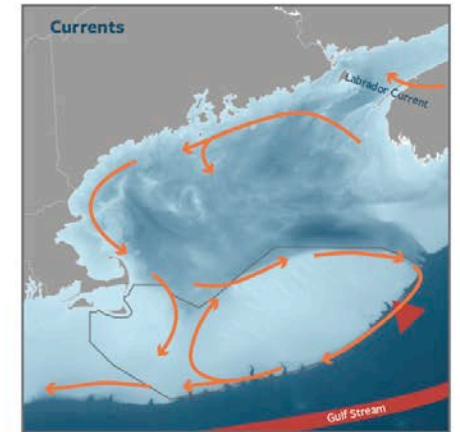
Infographic – the Georges Bank EPU

- Defines the boundaries of the EPU and why it was chosen for the eFEP.
- Management considerations
- What is being fished, how, and where?
- What are the physical, chemical, and biological characteristics of the ecosystem?

The Georges Bank Ecosystem



The bottom of Georges Bank is made up of areas of gravel, sand, and boulders. The gravel areas are important habitat for young cod and haddock. Both gravel and boulders provide important habitat structure for bottom dwelling fish.



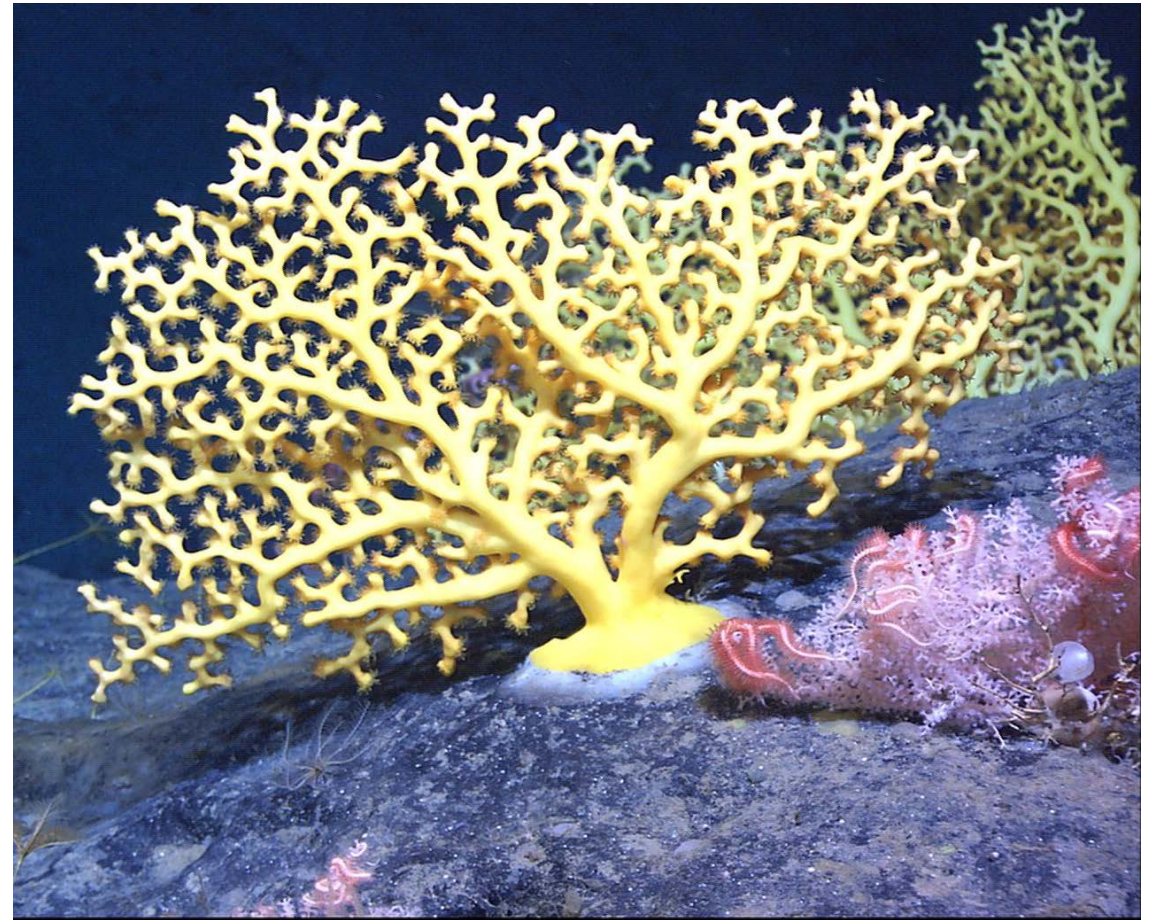
Georges Bank is strongly influenced by 2 major ocean currents - the Labrador Current from the north and the Gulf Stream from the south

There is a clockwise circulation pattern on Georges Bank which helps contain water on the Bank. Water, and the nutrients and plankton in it, tends to stay on the Bank for 2 to 5 months depending on season.

Brochures

Five brochures will be developed along three different themes:

- A glossary of EBFM and general fisheries management terms and phrases.
- An introduction to the EBFM process brochure with three different versions.
- A reader's guide to the eFEP.



Brochures – Glossary

- 35 terms and phrases.
- Intended for a broad audience.
- Will be visual wherever possible.



Brochures – EBFM Process

- Written as an invitation to participate in the process.
- Three different versions:
 - **Fishermen and Seafood Dealers & Processors**
 - **Pelagic & Recreational Fisherman and the General Public**
 - **Conservation NGOs**
- Differences based on a “What does it mean for me?” section.
 - **Introduction to the other stakeholders.**



Brochures – Guide to the eFEP

- A description of the important parts of the eFEP
 - Why the eFEP was developed
 - Goals and objectives
 - Dimensions – geographical and harvest
 - The FEP framework
 - The MSE process



Presentation #4

- An introduction to the eFEP
 - Shared content with the brochure.
- A walk-through of the worked example.

