

Scallop AP & Committee Meetings

PROVIDENCE, RHODE ISLAND
JUNE 2 & 3, 2026

CONNOR BUCKLEY
CHANDLER NELSON



**New England Fishery
Management Council**

WELCOME NEW SCALLOP ADVISORS!

Scallop Advisory Panel Membership	
James Gutowski, Barnegat Light, NJ, <i>Chair</i>	Cassie Canastra Larsen, New Bedford, MA, <i>Vice-Chair</i>
Kirby Aarsheim, New Bedford, MA	Brady Lybarger, Cape May, NJ
Wes Brighton, Chilmark, MA	Michael Marchetti, Wakefield, RI
Jay Elsner, New Bedford, MA	Ben Martens, Brunswick, ME
Brent Fulcher, New Bern, NC	Chris Merl, Wellfleet, MA
Kyle Grant, Gloucester, MA	Ed Mullis, Newport News, VA
Peter Hughes, Stone Harbor, NJ	Alex Todd, Chebeague Island, ME
Bob Keese, Bourne, MA	Walter White, Portsmouth, RI

- Welcome to the NEFMC's largest and most productive Advisory Panel (up for debate)
- Five new Advisors representing Limited Access, LAGC IFQ, and LAGC NGOM perspectives.



AGENDA (AP)

9:00 AM – Welcome, updates, introduction to NEFMC Policies for new advisors

9:30 AM– Discuss fishery performance from end of FY 2025 through May 2026

10:30 AM – Review 2026 Scallop Work Priorities and provide input on the development of measures for Framework 42

12 PM – *Lunch*

1:00 PM – Begin development of 3-year roadmap of Scallop work priorities

- Presentation from Dr. Andrew Corso (CFF) on Electronic Monitoring project

3:00 PM – Develop recommendations for Scallop RSA Priorities for 2027 & 2028

4:00 PM – Other Business (as needed)

4:15 PM – Adjourn



UPDATES

February 7 & April 7 – Scallop PDT Meetings

- PDT met to discuss improvements to survey data treatment, 2026 Scallop Work Priorities, and Scallop EFH.

April 22-27 – International Pectinid Workshop

- Held in New Bedford, brought together scallop experts from around the world to advance collective understanding of scallop biology, ecology, and management.

May 12 – Scallop RSA Share Day

- Hosted by Coonamessett Farm Foundation. ~30 attended virtually, and ~30 in person. 10 presentations on scallop biology, gear, surveys, and industry-collected data and co-management.

May 14 – Enforcement Committee Meeting

- Discussion on NGOM scallop fishery enforcement trends and challenges.



Scallop AP Meeting

9:00AM – 4:15PM

Main meeting materials

Doc 3a, 4a, 5a, 5b

PDT Membership

Dave Rudders has stepped down from the PDT, and **Sally Roman** has joined to represent VIMS.

Staff Changes

Chandler Nelson will be leaving Council Staff in mid-June.

GOALS FOR TODAY

1. Develop input for the Committee on measures to allocate Limited Access DAS by region, and sub-management areas in the NGOM
2. Develop input for the Committee on the implementation of the Scallop Strategic Plan and 3-Year work plan
3. Develop recommendations for the Committee on Scallop RSA priorities for 2027 and 2028.

Scallop AP Meeting

9:00AM – 4:15PM

Main meeting materials

Doc 3a, 4a, 5a, 5b

PDT Membership

Dave Rudders has stepped down from the PDT, and **Sally Roman** has joined to represent VIMS.

Staff Changes

Chandler Nelson will be leaving Council Staff in mid-June.



NEFMC Advisory Panel Policies



New England Fishery
Management Council

NEFMC ADVISORY PANEL POLICIES

Welcome and thank you for serving!

Role: Support developing or amending an FMP or special issue or problem.

Your input matters! AP discussions and recommendations are shared with each Fishery Management Plan Committee and made available to the Council.

AP recommendations are advisory and are considered alongside other information in Committee and Council decision-making.



MEMBERSHIP

1. Actively engaged in some aspect of commercial or recreational fisheries.
2. Knowledgeable in the conservation and management of a fishery.
 - To the extent possible, membership shall reflect broad cross-section of interests and expertise from geographical distribution, user groups, etc.
 - The recreational fishing industry shall have at least one seat on the herring and habitat APs.
 - Other Councils may be invited to name advisors to serve.



ORGANIZATION

- AP Chair designated by Committee Chair, reviewed by Executive Committee and approved by Council Chair.
- AP Chair expected to routinely communicate meeting results to relevant committee.
- *AP Chair will be seated at the Committee table. They may not vote but can freely enter the discussion. AP Chairs must identify comments as “discussed by the AP” or “personal input”. AP Chairs must leave committee table when providing personal comments.*
- A Vice-Chair can be designated but is not required. The vice-Chair may be authorized to attend committee meetings in place of the AP Chair with advance approval of the Executive Director.



COMMITMENT

- Number of meetings varies by panel and year – range of 0-5 per year.
- Meeting may be conducted in-person or by webinar.
- If an in-person meeting is scheduled, we ask that you plan to come to the meeting in-person. The Council provides travel reimbursement (following slide).



APPOINTMENTS

- After three years performance and attendance will be reviewed. If needed, new members will be solicited to fill any vacancies.
- All members must apply for re-appointment at the end of each 3-year term.
- Neither proxies nor designees shall serve in place of appointed advisor.
- Prior to selection, nominees are subject to additional level of review by NOAA's Office of Law Enforcement.



TERMINATION

The Council *may* replace an AP members at its discretion if he/she:

1. Transfers employment or moves;
2. Is absent for two or more consecutive meetings without adequate notification;
3. Appears unable or unwilling to fulfill obligations;
4. Area of expertise no longer required; or
5. For just cause (e.g. marine violation, failure to show respect for other panel members, disruptive behavior, etc.).



TRAVEL AUTHORIZATION AND REIMBURSEMENT

- Eligible for reimbursement of travel expenses incurred while attending authorized meetings (e.g. mileage, hotel overnight, meals, etc.), subject to availability of funds.
 - The Council will reimburse you for the actual cost of meals, including gratuity. Alcohol is not a reimbursable expense. You do not need to submit receipts for your meals.
- Reimbursed from APs primary residence, as reflected on application.
- To qualify for overnight lodging, your travel distance must be over 50 miles or requires you be available before 6 a.m. or after 8 p.m.
- Additional guidance found in [Operations Handbook pages 38-41](#).
- Questions on travel? Contact us before travel takes place.



MEETING PLANNING AND PREPARATION

What to expect:

- Staff may send poll by email before a meeting to identify possible meeting dates, and sometimes a date will just be selected by the Committee Chair.
- Prior to a meeting staff will email memo from Chair with meeting purpose. Monitor your emails from staff and check website frequently.
- The Council has gone paperless – all meeting materials will be sent to you electronically. If you plan to review materials during the meeting, it is suggested that you bring a device that can connect to the internet.
- To the extent possible, come prepared with draft motions and discussion points.



MEETING GROUND RULES

- Come to every meeting prepared, when possible, review documents from staff before arriving at the meeting.
- Follow the agenda as managed by the Chair (i.e. stay on topic).
- Participate in the discussion! You are here for a reason – share your knowledge.
- Listen respectfully to the comments of others; give other opinions honest consideration.
- Be open to points of view that may differ from your own.
- Discuss the issues – avoid personal attacks.
- Avoid profane language.
- Sustain a professional meeting environment before, during and after meetings.



BEHAVIORS THAT ARE UNACCEPTABLE

- Ridicule of another person's opinions or suggestions.
- Threats aimed at anyone (Council/AP/PDT member, staff, public).
- Harassment.
- Discrimination.



UNLAWFUL HARASSMENT

NOAA and the Councils are committed to ensuring a safe working environment for everyone involved in Council process.

Two model policies adopted by the Council:

- Council staff policy
- Council process participant policy

Policies incorporated into the Council SOPP

Based on race, color, religion, sex (including sexual orientation, gender identity, or pregnancy), national origin, older age (beginning at age 40), disability, or genetic information (including family medical history).

Unlawful when:

- Condition of employment
- Severe or pervasive enough create an intimidating, hostile, or abusive environment



UNLAWFUL HARASSMENT

The Council will not tolerate harassment or retaliation against those who report harassment.

Preventing harassment is everyone's responsibility and individuals who experience or observe harassment are strongly encouraged to come forward to ensure a safe working environment for everyone involved in the Council process.

Council Process Participants who observe or are subject to harassment by any Council member, Council employee, or other Council Process Participants may report incidents in a variety of ways, including but not limited to:

- The Council Executive Director;
- The Council chair or vice-chair;
- Appropriate law enforcement authorities, as needed.



KEY POLICIES

- All participants have responsibility to prevent harassment in the Council process
- Those subject to harassment, or observing it, should report it as soon as possible
- The Council should conduct an inquiry
- Appropriate action should be taken after inquiry
- Participants identified in the policies are required to take periodic training
- Reports can be made to Chair, Vice-Chair, Executive Director, or others (employee's supervisor, for example)
- Executive Director responsible for initiating inquiry
- Time limits for response
- Federal/state employees can report within their own organization.



FUTURE ACTION

- Policies included in SOPP as appendices
- Periodic briefings of Council/SSC/AP/Staff on policy
- Required training for Council members, SSC, staff, and some AP members



THANK YOU!

The Council appreciates your time and effort - Your participation is a critical step in this overall process!

Any questions, contact us anytime. We look forward to working with you.

- Connor Buckley - (978) 465-0492 *115
- cbuckley@nefmc.org

Council Operations Handbook Located here: <https://www.nefmc.org/about>



SCALLOP FISHERY PERFORMANCE – FY2025

- FY2025 ended on a high note with an unexpected ~1 million lbs of landings on Stellwagen Bank south of the 42 20.
 - Storm event blew scallops out of the WGOM Closure and into NGOM and open bottom.
- March LPUE – ~2000 lb/day
- Input on FY2025 fishery performance?



Limited Access sub-ACL

	OPEN	CA I	CA II	MONTHLY TOTAL	CUMULATIVE TOTAL	% OF SUB-ACL (35,031,453 lb)	% OF APL (17,041,733 lb)	Observer Set Aside
January	303,156	84,271	0	387,427	16,167,493	46.15%	94.87%	12,415
February	696,198	9,291	0	705,489	16,872,982	48.17%	99.01%	11,269
March	1,469,810	16,965	0	1,486,775	18,361,757	52.42%	107.75%	11,078
TOTAL	11,970,337	2,880,864	3,510,556	18,361,757				274,667

Limited Access General Category sub-ACL

	OPEN	NGOM	MONTHLY TOTAL (ACL)	CUMULATIVE TOTAL (ACL)	% OF SUB-ACL (1,854,088 lb)	CUMULATIVE TOTAL (APL)	% APL (901,691 lb)	Observer Set Aside
January	12,811	0	12,811	722,249	38.95%	953,794	105.78%	400
February	22,448	0	23,574	745,823	40.23%	977,368	108.39%	0
March	30,430	0	30,430	776,253	41.87%	1,007,798	111.77%	2,100
TOTAL	386,522	231,545	776,253					27,400

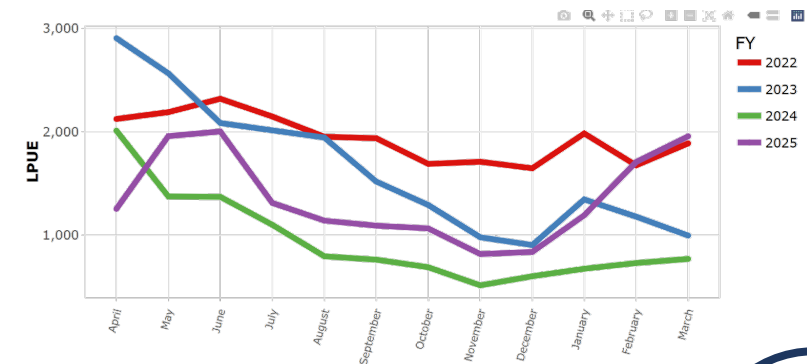
*ACL/APL does not include 155,162 Carryover pounds

Scallop Open Areas Days-at-Sea Usage

	DAS	CUMULATIVE DAS	PERCENT OF ALLOCATION (7,810 days)
January	272	6,652	85.17%
February	405	7,057	90.36%
March	1,187	8,244	105.55%

Northern Gulf of Maine Landings

	DEALER POUNDS	CUMULATIVE TOTAL	% OF TAC (674,615 lb)
April	650,886	650,886	96.48%



SCALLOP FISHERY PERFORMANCE – FY2026

- Strong open bottom landings in the Mid-Atlantic Bight, 30-35 fathoms
 - High survival and strong growth of ~4-year old cohort
 - Likely driven by prevailing short-term cold ocean bottom temperature trend
- April LPUE – ~2400 lb/day, mostly 10/20s & 20/30s
 - Higher catch rates on smaller-sized scallops than in previous years
- **Input on current conditions?**



Reports Run on: 2026-05-21
 For data reported through 2026-05-20
 Quota Period: 2026
 Quota period dates: April 1, 2026 to March 31, 2027

Limited Access sub-ACL

	OPEN	CA I	CA II	MONTHLY TOTAL	CUMULATIVE TOTAL	% OF SUB-ACL (25,059,945 lb)	% OF APL (16,140,042 lb)	Observer Set Aside
April	3,640,187	4,456	11,665	3,656,308	3,656,308	14.59%	22.65%	22,360
May	1,854,514	4,123	1,311	1,859,948	5,516,256	22.01%	34.18%	10,140
TOTAL	5,494,701	8,579	12,976	5,516,256				32,500

Limited Access General Category sub-ACL

	OPEN	NGOM	MONTHLY TOTAL (ACL)	CUMULATIVE TOTAL (ACL)	% OF SUB-ACL (1,324,978 lb)	CUMULATIVE TOTAL (APL)	% APL (853,923 lb)	Observer Set Aside
April	41,123	165,706	41,123	41,123	3.1%	206,829	24.22%	5,125
May	56,747	126	56,747	97,870	7.39%	263,702	30.88%	2,200
TOTAL	97,870	165,832	97,870					7,325

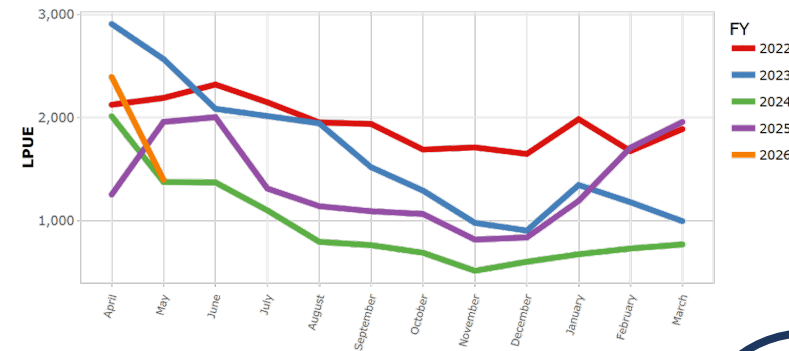
*ACL/APL does not include 58,665 Carryover pounds

Scallop Open Areas Days-at-Sea Usage

	DAS	CUMULATIVE DAS	PERCENT OF ALLOCATION (11,009 days)
April	1,533	1,533	13.93%
May	1,166	2,699	24.52%

Northern Gulf of Maine Landings

	DEALER POUNDS	CUMULATIVE TOTAL	% OF TAC (437,867 lb)
April	449,268	449,268	102.6%



SCALLOP FISHERY OUTLOOK

Rotational Areas

- Nantucket Lightship

Open Bottom

- Gulf of Maine
- Area I
- Southeast parts
- South Channel
- Mid-Atlantic
- Elephant Trunk

Northern Gulf of Maine

- Stellwagen Bank
- Jeffreys Ledge
- Ipswich Bay

Industry Input?

- Expectation versus reality
- Meat yields
- Meat quality
- Predators
- Clappers
- Seed
- Mixed year classes
- Bycatch



2026 Scallop Work Priorities



SCALLOP OUTLOOK BY QUARTER IN 2026

Key:

Staff led project

NMFS led project with Staff and/or PDT involvement

Possible follow-up and/or implementation

External-led project with Staff and/or PDT involved

Calendar Year	Jan – Mar	Apr - Jun	July - Sept	Oct - Dec
✓ Framework 40	Final Submission	Rulemaking		
FY 27/28 Specifications			2026 Field Season	Framework: 2027/2028 (default) Specifications
Framework 42	Analysis to develop measures for regional DAS, NGOM sub-areas			
Annual Scallop RSA Work	NOFO	NOFO Closes	Proposal Reviews	Share Day
Develop Projection methods	RFP Solicitation	Contractor work		
LAGC IFQ Program Review	Final report			
✓ Strategic Plan	Review Strategic Plan and develop 2027-2029 Work Plan			



DEVELOPING NEW STOCK PROJECTION METHODS

Contractor

- Contract awarded to SMAST to develop a new stock projection model for Council use in setting annual catch specifications
 - Drs. Adam Delargy, Steve Cadrin, and Kevin Stokesbury are PIs with substantial experience in scallop biology, scallop management, and stock assessment methods

Project Tasks

1. Group will complete a written review of the Scallop Area Management Simulation (SAMS) model methods and relevant literature
2. Develop new projection models and conduct retrospective testing and comparison with previous SAMS model outputs, fishery, and survey data
3. Develop a new LPUE model for improved DAS calculation



DEVELOPING NEW STOCK PROJECTION METHODS

Deliverables

- Present draft methods and results to Scallop PDT by **April 1, 2027**
- Present methods to the SSC by **May 1, 2027**
- Prepare full technical report summarizing methods, results, and recommendations (including all source code and data) by **June 4, 2027**
- Multi-user accessible projection model, including full documentation with reproducible workflows and user-friendly guidance materials by **June 30, 2027**

Intention is to have viable stock projection model for use in setting FY 2028 catch specifications



SCALLOP FRAMEWORK 42

- Council will be initiating Scallop Framework 42 at June meeting in Mystic, CT
- 2027 and 2028 (default) catch specifications, regional allocation of Limited Access Days-at-Sea, sub-management areas in the NGOM
- **Key milestones & meetings**
 - Survey data in by mid-August
 - October 9, 2026 SSC meeting on OFL and ABC
 - AP/CTE meetings in September, October, and November
 - Council takes final action in December
- **Goal for today**
 - Review Scallop PDT work to date on the development of management measures
 - Provide input to the Scallop PDT on additional analyses to support preparation of alternatives for your September meeting.



NORTHERN GULF OF MAINE SUB-MANAGEMENT AREAS

Background

- Discussed during FW40 development as a tool to control fishing effort on Stellwagen Bank, shift effort towards other banks/ledges with lower catch rates but ~50% of the exploitable scallop biomass.
- NGOM Total Allowable Landings (TAL) is set using total exploitable biomass and a single fishing mortality rate ($F=0.15-0.25$) but realized F-rate on Stellwagen likely much higher.
- Additional benefits might include extending the length of the season and reducing vessel crowding on Stellwagen Bank.



NORTHERN GULF OF MAINE SUB-MANAGEMENT AREAS

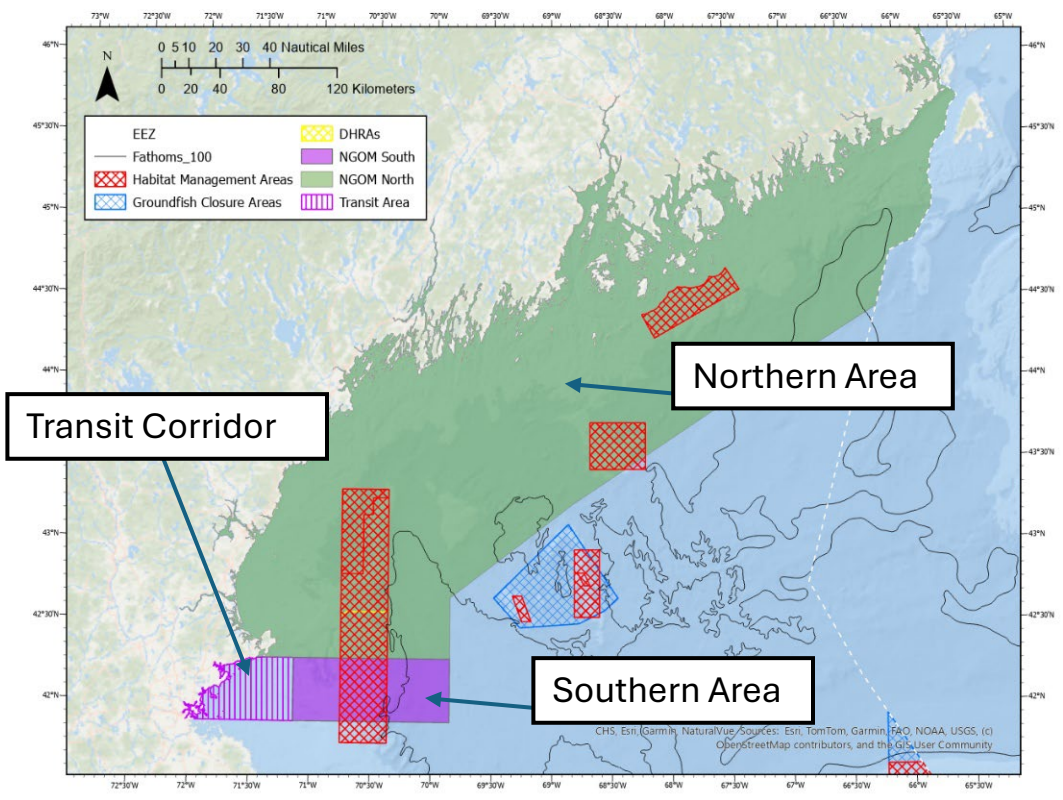
Background

- Discussed during FW40 development as a tool to control fishing effort on Stellwagen Bank, shift effort towards other banks/ledges with lower catch rates but ~50% of the exploitable scallop biomass.
- NGOM Total Allowable Landings (TAL) is set using total exploitable biomass and a single fishing mortality rate ($F=0.15-0.25$) but realized F-rate on Stellwagen likely much higher.
- Additional benefits might include extending the length of the season and reducing vessel crowding on Stellwagen Bank.

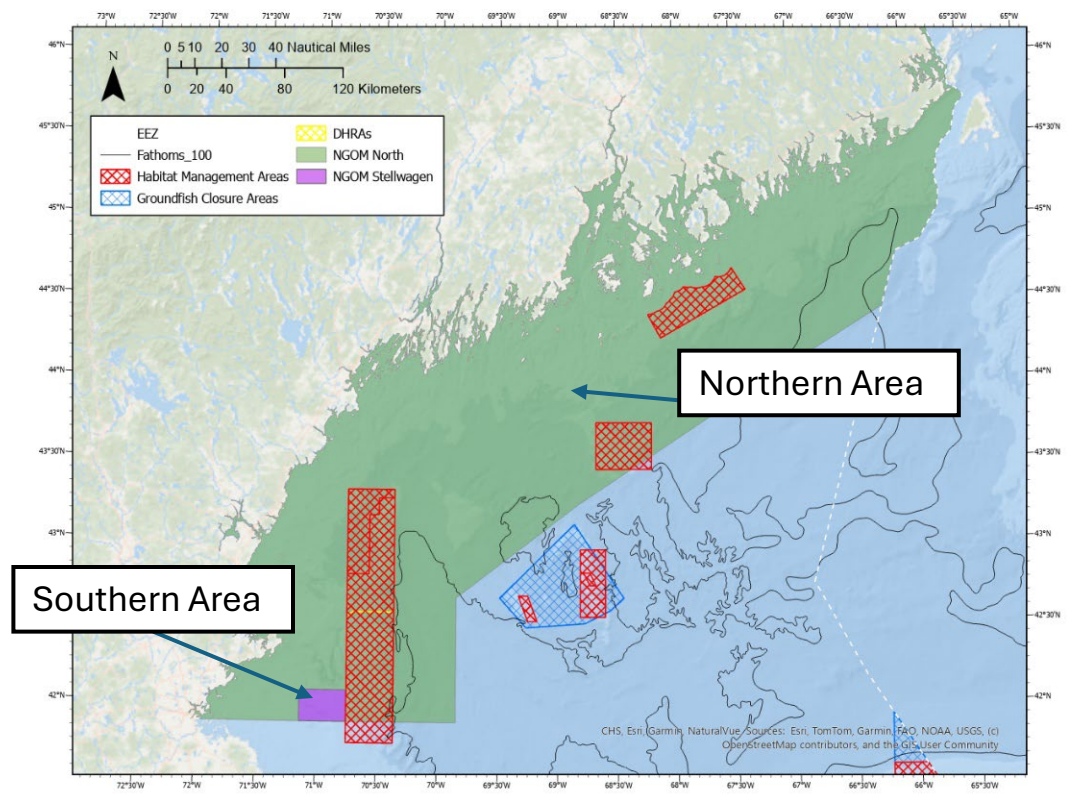


AREA MANAGEMENT

Concept 1

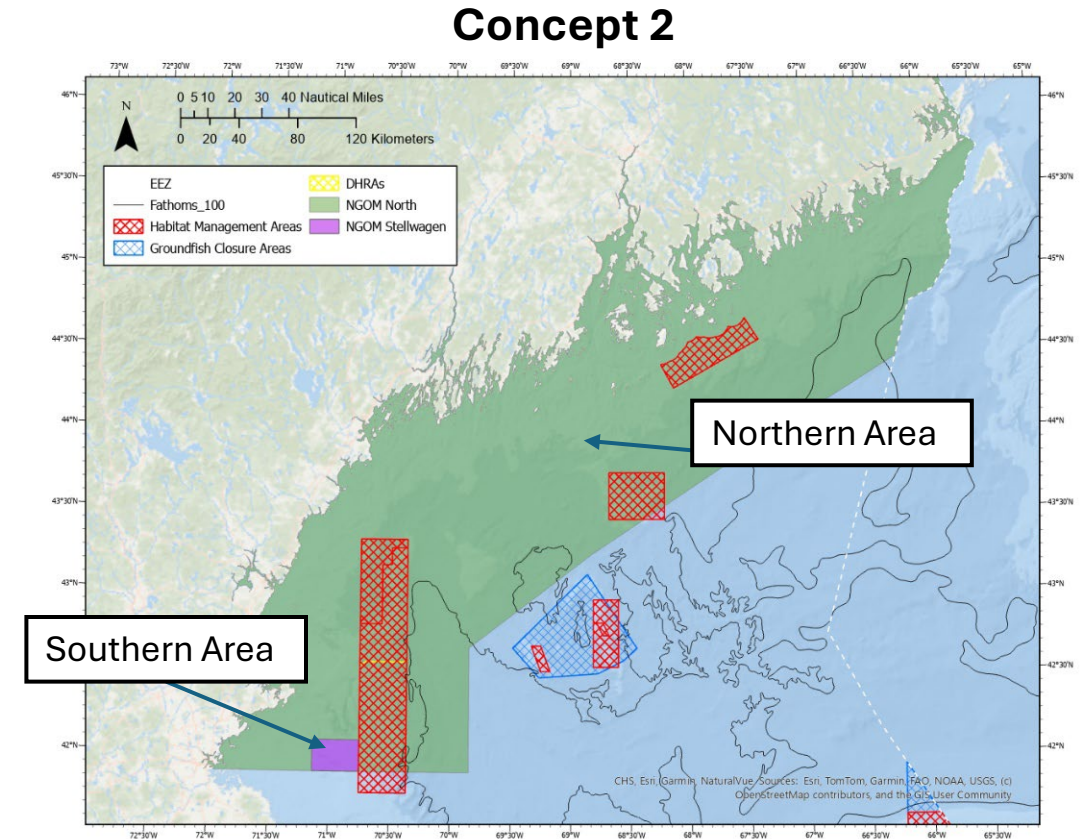


Concept 2



AREA MANAGEMENT

- Manage sub-area fishing mortality rates, but overall fishing mortality for the NGOM must remain between $F=0.15$ and $F=0.25$.
 - Example: If Stellwagen Bank were closed ($F=0$), the F -rate in the northern area would have a minimum regulatory limit $> F=0.15$
- Allow access to one of the two areas on April 1. When that area's TAL is harvested, area would close and the second area would open.



AREA MANAGEMENT

- Manage sub-area fishing mortality rates, but overall fishing mortality for the NGOM must remain between $F=0.15$ and $F=0.25$.
 - Example: If Stellwagen Bank were closed ($F=0$), the F -rate in the northern area would have a minimum regulatory limit $> F=0.15$
- Allow access to one of the two areas on April 1. When that area's TAL is harvested, area would close and the second area would open.
- Monitoring and enforcement remain a challenge, but GARFO staff have confirmed that this can be supported.
- Scallop PDT input
 - No more than two sub-areas
 - Sequential access to areas



NORTHERN GULF OF MAINE SUB-MANAGEMENT AREAS

Discussion Questions

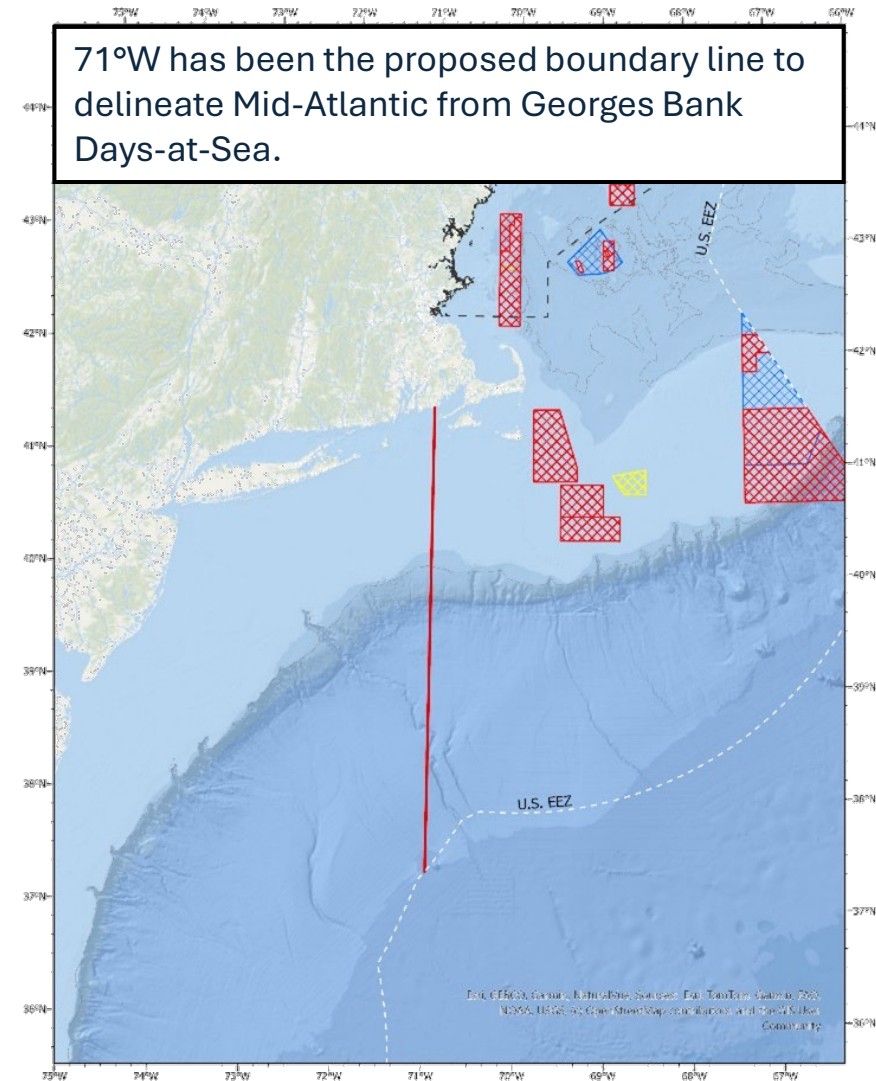
- Feedback on management boundary concepts and timing of access?
- How would separate management of a southern/Stellwagen Bank sub-area affect participation from different segments of the NGOM scallop fishery?
- How would opening the larger northern sub-area on April 1, instead of the southern/Stellwagen bank sub-area, affect participation and fishing operations? For vessels opting to fish in the northern sub-area, what other factors would influence the decision to fish in that area?
- How might in-shell possession limits need to be adjusted to prevent transferring shell-stock between sub-areas?
- How should deductions for observer coverage (1% of NGOM ABC) and RSA (25,000 lb) be apportioned between two sub-areas?



REGIONAL DAY-AT-SEA ALLOCATIONS

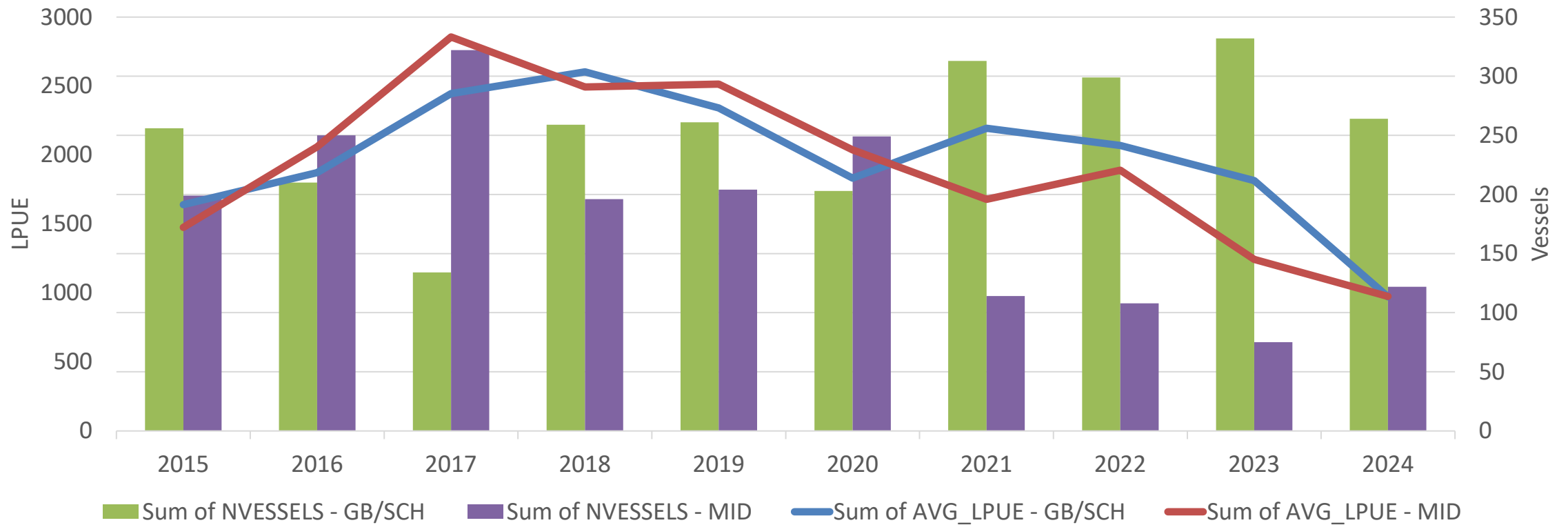
Background

- Strategic Plan work item - Enabling the Council to allocate DAS separately between the Mid-Atlantic and Georges Bank/South Channel, delineated by the 71°W boundary.
 - Reduce risk of regional overfishing when large differences in regional LPUE lead to overconcentration of fishing effort. Since 2021, the fleet has focused their effort on Georges Bank.
- 2025 stock assessment estimated that overfishing was occurring on Georges Bank in 2023, when this concentration was greatest.



REGIONAL DAY-AT-SEA ALLOCATIONS

Background



REGIONAL DAY-AT-SEA ALLOCATIONS

Background

- The Scallop PDT recognized the benefits of regional management of the open-bottom but cautioned against excessive management complexity that could further strain administration, monitoring, enforcement, and the flexibility of vessels to target scallop beds with higher catch rates.
- GARFO staff have shared that there is capacity to support regional DAS allocations in FY 2027, but trading of DAS between regions and vessels could not be supported until FY 2028.
 - Ongoing work to rebuild GARFO's Allocation Management System (AMS)



REGIONAL DAY-AT-SEA ALLOCATIONS

Regional DAS allocations (Concept 1): Vessels are allocated Mid-Atlantic and Georges Bank DAS, delineated by the 71W boundary line.

Differential DAS Counting (Concept 2): Differential counting, a measure used before for Northeast Multispecies areas, would enable specifying a ratio to adjust DAS charges to increase or decrease realized effort in a region. Differential DAS counting areas would be delineated by the 71W boundary line.

- E.g. an adjustment of 1.2:1 on Georges Bank, a vessel that fished for 14 DAS on Georges Bank would only be charged 16.8 DAS, effectively discounting fishing effort spent in that region. This could also be used to incentivize fishing effort in a region.



REGIONAL DAY-AT-SEA ALLOCATIONS

DAS carryover

- 10 DAS can be carried over into following fishing year
- Between 2011-2022, Limited Access vessels carried over 5 DAS on average, with very little interannual variability for Full-Time LA vessels (more for FT-SD, PT)
- Between FY 2026 and FY 2027, need to define how carryover DAS will be treated
 1. Not allow any DAS carryover
 2. Reduce DAS carryover from 10 DAS to 5 DAS
 3. Split up any DAS carryover between regions by the same proportion as FY 2027 DAS allocations



REGIONAL DAY-AT-SEA ALLOCATIONS

Discussion Questions:

- Are regional DAS allocations viable for implementation in FY 2027 if DAS trading could not be supported until FY 2028?
 - If not, would differential DAS counting between the regions be a viable alternative?
- Regional DAS allocations limit the fleet's capacity to use all their DAS in a single area. How might vessels adjust their operations to compensate?
- Would you expect this to lead to economic harm for certain Limited Access scallopers, such as those who typically rely more heavily on one region than the other?
- Feedback on DAS carryover during transition year?



SCALLOP FRAMEWORK 42

Next steps

- AP & Committee should signal continued support for development of these management measures in FW42.
- Committee may wish to provide the Scallop PDT with tasking to inform the development of management alternatives for FW42.
- **September AP/Committee meetings** – Review additional Scallop PDT analysis and define management alternatives.
- **October AP/Committee meetings** – Review additional Scallop PDT analysis and select final preferred alternatives.



Implementing the Scallop Strategic Plan

3-YEAR WORKPLAN



New England Fishery
Management Council

LONG-TERM SCALLOP STRATEGIC PLAN

- Council's Holistic Strategic Plan (2026-2036)
 - Overarching, not fishery specific. Four goals outlined to improve Council processes and decision-making.
 - Implementation plan is still ongoing.
- Scallop Strategic Plan was developed to define a shared vision for the direction of the scallop fishery over the next 3-5 years and provide actionable steps to get there.
 - Informed by four visioning sessions and input from Council members, NOAA Fisheries staff, and scallop fishermen and processors from across the region.
 - Highlighted 9 overall objectives and 29 strategies to work towards those objectives
 - Align implementation of the Scallop Strategic Plan with the Holistic Strategic Plan as it is fleshed out – already a lot of overlap between the two.



LONG-TERM SCALLOP STRATEGIC PLAN

Reactive → Resilient → Proactive

How do we get there?

Proposal – Develop 3-Year Work Plan

1. Identify highest-priority items from the Scallop Strategic Plan. Sequence work items alongside required annual work priorities for 2027 – 2029
2. Kick it back to the Scallop PDT for additional analysis, develop draft work plan
3. AP & Committee review and finalize work plan in September.
4. Committee recommendations for 2027 priorities would go to the Council for final decision in December
5. Summer 2027, AP & Committee reviews planned work for 2028 and discusses new work for 2030.



SCALLOP STRATEGIC PLAN OBJECTIVES

1. Improve management capacity, flexibility, and responsiveness in a changing environment
2. Improve the reliability of annual projections
3. Expand opportunities in the NGOM fishery while maintaining conservative management
4. Improve rotational management performance and access area fishing opportunities
5. Improve fishing practices to minimize incidental scallop mortality, bycatch, habitat impacts
6. Maintain the economic viability of the scallop fleet
7. Maintain a dynamic Scallop Research Set-Aside program to fund scallop research and surveys
8. Develop the necessary infrastructure to support a scallop enhancement program
9. Improve scallop industry engagement at Scallop PDT, Advisory Panel, and Committee



2027 WORK

Scallop	Required	Complete and submit FW42	Complete early 2027
Scallop	Required	Set ABC/ACL for scallop stock with specifications for FY 2028 (FY 2029 default)	2027
Scallop	Required	Framework to set management measures for FY 2028	2027
Scallop	Ongoing	Scallop RSA Management (Share-Day)	Ongoing
Scallop	Ongoing	Scallop Stock Projection Contract	Complete Spring 2027
Scallop	New	?	
Scallop	New	?	



2028 WORK

Scallop	Required	Complete and submit Framework Action	Complete early 2028
Scallop	Required	Set ABC/ACL for scallop stock with specifications for FY 2029 (FY 2030 default)	2028
Scallop	Required	Framework to set management measures for FY 2029	2028
Scallop	Ongoing	Scallop RSA Management (Set 2-year priorities, Share-Day, Program Support)	Ongoing
Scallop	New	?	
Scallop	New	?	
Scallop	New	?	



2029 WORK

Scallop	Required	Complete and submit Framework Action	Complete early 2029
Scallop	Required	Set ABC/ACL for scallop stock with specifications for FY 2030 (FY 2031 default)	2029
Scallop	Required	Framework to set management measures for FY 2030	2029
Scallop	Ongoing	Scallop RSA Management (Share-Day, Program Support)	Ongoing
Scallop	New	?	
Scallop	New	?	
Scallop	New	?	



HIGH PRIORITY WORK FROM PREVIOUS DISCUSSIONS

- Improving real-time data collection
- Developing in-season management triggers
- Separating management of the Mid-Atlantic and Georges Bank stocks
- Developing tools/protocol for managing high-density areas
- Improving fishing practices (e.g. improved outreach, electronic monitoring, gear modifications, regulations)
- Develop a Scallop Access Area on the Northern Edge

Strategic Plan Objectives

1. Improve management capacity, flexibility, and responsiveness in a changing environment.
2. Improve the reliability of annual projections
3. Expand opportunities in the NGOM while maintaining conservative management
4. Improve rotational management performance
5. Improve fishing practices
6. Maintain economic viability of the scallop fleet
7. Maintain a dynamic Scallop Research Set-Aside program
8. Develop infrastructure to support scallop enhancement
9. Improve scallop industry engagement



RELEVANT RECENT AND ONGOING RESEARCH

Real-time data collection

- Image-based Research Fleet (CFRF, 2023-2025 awards)
- ScallApp (CFRF, 2024 award)

Rotational management

- Kowaleski et al. (2026) – Evaluating management options for high-density recruitment events.
- How Often Do Small Scallop Aggregations Grow Into Fishable Beds and What are the Drivers? (SMAST, 2023 award)

Fishing Practices

- Electronic Monitoring (CFF)

Scallop Enhancement

- VIMS Enhancement Workshop White Paper
- Development of a Scalable Near-Shore Nursery System for Sea Scallops (VIMS, 2023 award)
- Key factors influencing the efficacy of transplanting (CFF, 2022 award)

Gear Modifications

- Tensiometers (CFF, 2024 award)
- 4.25” rings (CFRF, 2025 award)

Scallop biology

- Disentangling recruitment and growth dynamics (WHOI, 2024-2025 award)
- Climate driven changes in growth and distribution (VIMS, 2024-2025 award)
- Combining ocean models and shell archives to quantify and project spatiotemporal changes in scallop functional traits (UConn, 2024-2025 award)
- Recruitment dynamics and impacts of offshore wind development (CFF, WHOI, 2025 award)



LONG-TERM SCALLOP STRATEGIC PLAN

For today:

- Discussion on which work items to add to the draft work plan for 2027-2029. Consider sequencing of work items by urgency, additional research needs, and required work priorities.
- The Committee may wish to provide the Scallop PDT with tasking to provide additional analysis or information to support your decisions

Next steps:

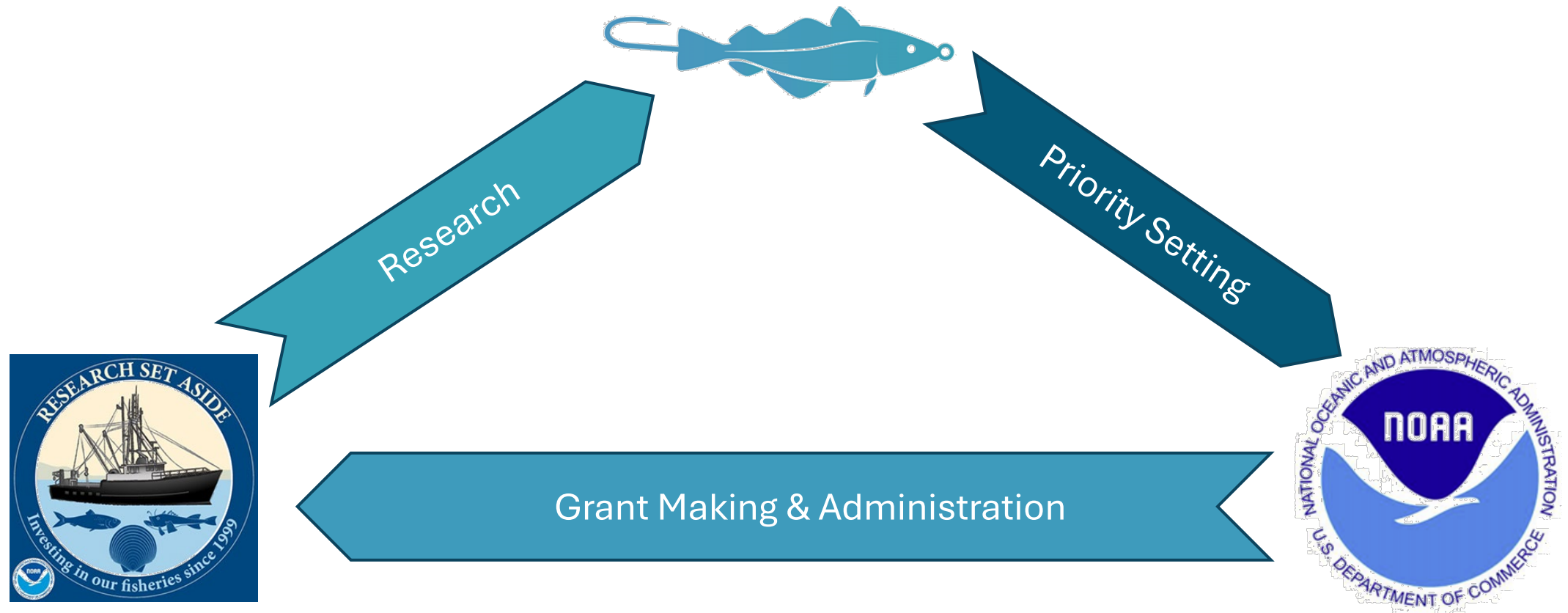
- Based on input today and tomorrow, the Scallop PDT will develop a draft work plan for you to review at your next meeting.
- 3-Year Work Plan will serve as the basis for AP and Committee recommendations for 2027 Priorities (October meeting)

Strategic Plan Objectives

1. Improve management capacity, flexibility, and responsiveness in a changing environment.
2. Improve the reliability of annual projections
3. Expand opportunities in the NGOM while maintaining conservative management
4. Improve rotational management performance
5. Improve fishing practices
6. Maintain economic viability of the scallop fleet
7. Maintain a dynamic Scallop Research Set-Aside program
8. Develop infrastructure to support scallop enhancement
9. Improve scallop industry engagement



Scallop Research Set-Aside



New England Fishery
Management Council

SCALLOP RESEARCH SET-ASIDE PRIORITIES

GOALS: Develop recommendations for 2027 & 2028 Scallop RSA Research priorities.

This is the final opportunity for the AP and the Committee to weigh in as a group.

Seeking input as motion(s) or a consensus statements.



SCALLOP RSA – IN A NUTSHELL

Scallop RSA program began in 1999.

Evolved over time, 1.275 million pounds set-aside each year to fund research projects, typically about 10-15 projects.

No federal funds – awards in pounds of scallop – allocated through competitive grants process.

Council will recommend RSA priorities for 2027 & 2028 at June meeting

- 2026 NOFO was substantially delayed, and no 2027 RSA competition is anticipated.
- Council and GARFO staff are in discussions about potential adjustments to the administration of the grant to improve reliability and flexibility for staff and RSA recipients



SCALLOP RSA SHARE DAY

½ day session held at Coonamessett Farm Foundation and by webinar.
Presentations and short reports are online.

May 12, 2026:

- 10 talks.
- ~50 total attendees.

Feedback on holding an in-person (hybrid) meeting next year.

Springboard for RSA priorities discussion...



RECENT RSA PROGRAM CHANGES

- In 2024, Council voted to set research priorities for two-year cycles, with up 3-year awards for projects related to scallop enhancement (vs. two-year awards for other non-survey projects).
 - Scope of current RSA priorities is broad and minimal changes by Council in recent years.
 - Aiming to shift project awards earlier in the year to address impacts of grant timing on RSA-funded scallop survey groups.

	January	February	March	April	May	June	July	August	September	October	November	December
Year 1					Share Day	Council sets Priorities	NOFO		NOFO Closes		Proposal Reviews	
Year 2	Award Decisions		Announce awards	Share Day	NOFO		NOFO Closes		Proposal Reviews	Award Decisions		
Year 3	Announce awards		Share Day	Council sets Priorities	NOFO		NOFO Closes		Proposal Reviews	Award Decisions		
Year 4	Announce awards		Share Day	NOFO			NOFO Closes		Proposal Reviews	Award Decisions		
Year 5	Announce awards		Share Day	Council sets Priorities	NOFO							



RSA AWARDS: 2010-2025

~ \$238 million awarded over 15-year period

- Total funding = Average scallop price * Set-aside pounds
- Total funding includes *compensation fishing and research*

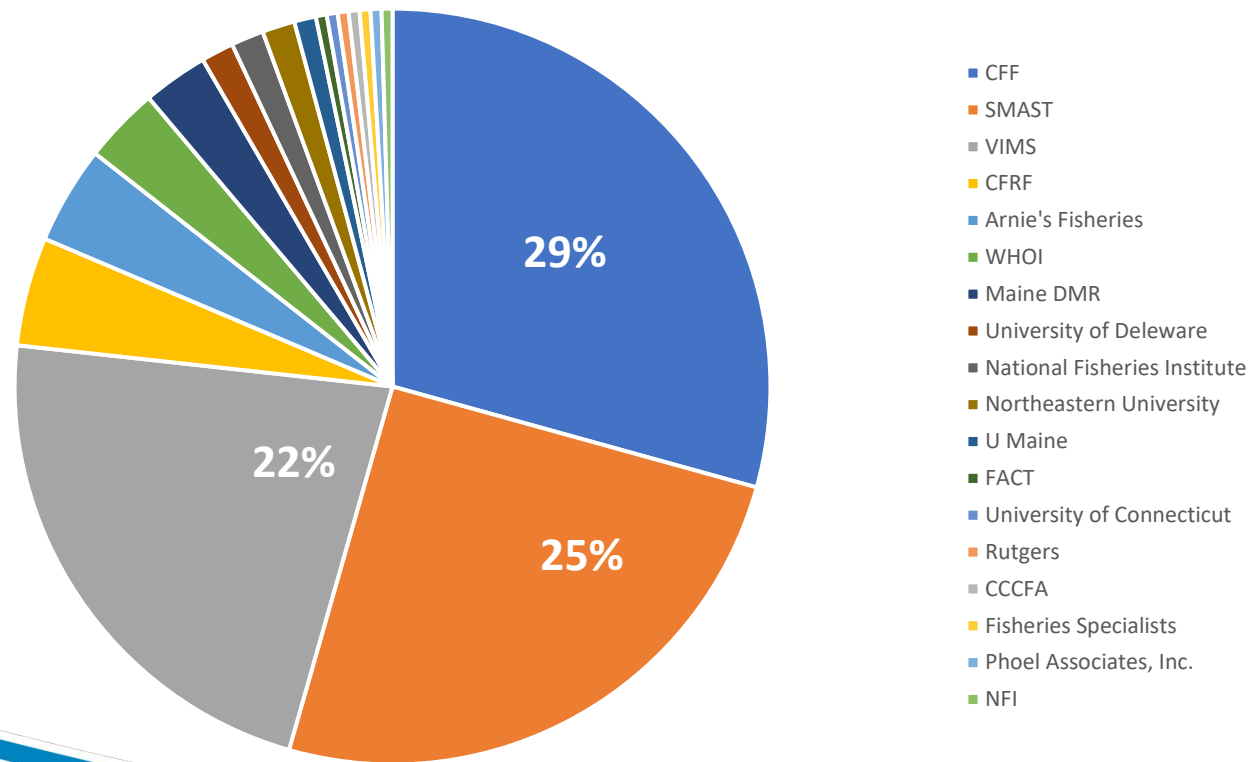
	Number of Projects		Funding	
Survey	90	(42%)	\$113,930,646	(48%)
Bycatch	44	(20%)	\$42,597,130	(18%)
Biology	31	(14%)	\$28,814,273	(12%)
Enhancement	3	(1%)	\$3,065,908	(1%)
Other	47	(22%)	\$43,728,160	(18%)
Grand Total	215		\$237,609,086	



RSA RECIPIENTS: 2010-2024

18 groups received funding through 215 successful proposals.

3 groups have received 77% of RSA pounds



2025 RSA FUNDED PROJECTS

Research Area	Number of Projects Funded	Estimated Value (Common price * pounds awarded)	Percentage of total funding
Survey	3	\$24,609,180	77.54%
Biology	3	\$3,874,867	12.21%
Wind	1	\$2,780,370	8.76%
Gear	1	\$471,787	1.49%
Grand Total	8	\$31,736,204	100.00%



RSA COMMON PRICE

- Common price is set annually by NEFSC, Council staff provide input.
 - Review of domestic fishery data and/or imports/exports
 - 2026 price reflects rising scallop prices.

Common Price				
2009		\$7.55	2019	↓ \$9.50
2010	→	\$7.55	2020	→ \$9.50
2011	↑	\$7.64	2021	↑ \$12.50
2012	↑	\$9.42	2022	↑ \$15.00
2013	↑	\$9.75	2023	→ \$15.00
2014	↑	\$10.50	2024	↓ \$14.00
2015	↑	\$12.00	2025	↑ \$15.00
2016	→	\$12.00	2026	↑ \$16.00
2017	→	\$12.00		
2018	↓	\$10.50		



SSC INPUT FROM OCTOBER 2025

- Reconsideration of the spatial structure of the scallop stock, and specifically research on the possibility of managing Atlantic sea scallops as multiple stocks.
- Exploring options for spatially explicit management and projection models.
- Development of decision-support tools that might help the PDT accomplish finer-scale spatial or temporal management.



SCALLOP RSA: GUIDING QUESTIONS

Questions to consider for the RSA program priorities:

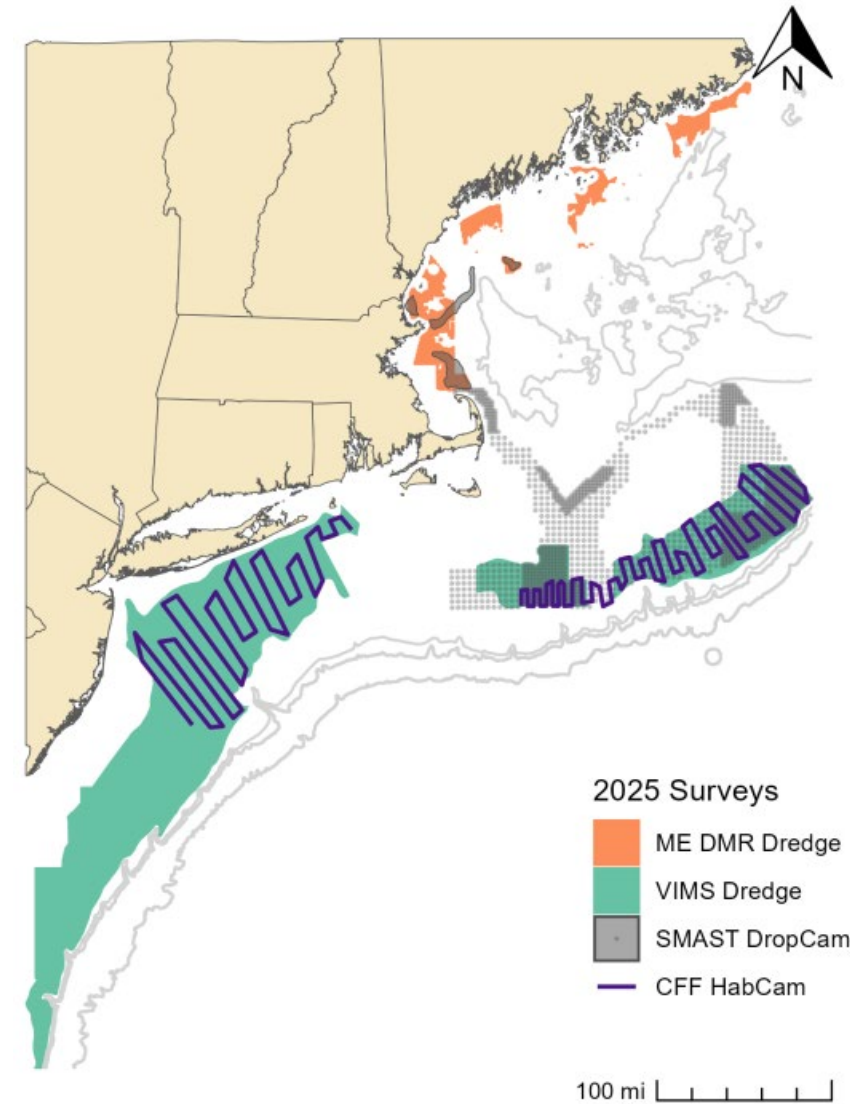
1. If the research is successful, what action will be taken based on the findings (e.g., is there a mechanism to use the results? Is it within the purview of the entity asked to fund the research?), and if so,
2. Is the research likely to be successful, or is the likelihood of success commensurate with the importance of the change it might lead to?

Available pounds are limited – focus on highest management and research priorities for upcoming 2-year period



OUTLOOK FOR SURVEY COVERAGE

	2026	2027	2028	2029
Georges Bank				
CFF	X	X		
SMAST	X	X	X	
VIMS	X	X	X	
Mid-Atlantic				
CFF	X	X		
VIMS	X	X	X	
Gulf of Maine				
SMAST	X	X	X	
DMR	X*			



CURRENT SCALLOP RSA PRIORITIES, 2025-2026

High Priority: Surveys

1. Surveys of access areas, areas of interest, broadscale

Medium Priority: Non-survey research

2. Scallop Biology
3. Turtle behavior
4. Enhancement
5. Bycatch
6. Commercial fishing behavior
7. Gear: Commercial dredge research
8. High-density areas
9. Offshore wind

General Research Needs

10. Habitat characterization and fishery impacts



SCALLOP PDT RECOMMENDATIONS

SCALLOP RESOURCE SURVEYS:

- The PDT continues to recommend that this remain a High Priority and did not recommend any changes to the language of this priority, however Staff note that several Scallop Strategic Plan work items could be included in the language of this priority.
 - Establishing a small-scale survey in access areas prior to the start of the fishing year (Strategy 2.3)
 - Increasing sampling effort in access areas at the end of their rotational cycle to reduce projection uncertainty (Strategy 2.4)
- Many surveys are currently funded through 2027 and 2028.

SCALLOP BIOLOGY:

- The PDT continues to recommend that this remain a Medium Priority and did not recommend any changes to the language of this priority.



SCALLOP PDT RECOMMENDATIONS

COMMERCIAL FISHING GEAR:

- The PDT continues to recommend that this remain a Medium Priority and did not recommend any changes to the language of this priority.
- Staff notes that fishery accountability measures may be revisited holistically by 2028, so it is unlikely that new gear research could be used in the refinement of scallop fishery accountability measures.

FISHING IN HIGH DENSITY AREAS:

- The PDT continues to recommend that this remain a Medium Priority and did not recommend any changes to the language of this priority.
- Noted that fishing in high-density areas has been a recurring concern that may be relevant for rotational fishing in the Nantucket Lightship in upcoming years
- Suggested possibly modifying the title and language of this priority to better capture general research focusing on improving fishing practices, e.g. FISHING PRACTICES AND DECISION-MAKING.



SCALLOP PDT RECOMMENDATIONS

HABITAT CHARACTERIZATION AND FISHERY IMPACTS:

- The PDT continues to recommend that this remain a General Priority and did not recommend any changes to the language of this priority.
- Noted that Scallop Essential Fish Habitat will be updated shortly based on species distribution model, suggesting the need for additional research is low. Other PDT members noted that research that aims to address survey dredge efficiency issues are valuable and could be considered under this priority, or FISHING IN HIGH DENSITY AREAS.

BYCATCH:

- The PDT recommends deprioritizing bycatch research to a General Priority and did not recommend any changes to the language of this priority.
- As above, staff notes that future revised fishery accountability measures may limit the utility of new bycatch research to aid the scallop fishery in avoiding or responding to accountability measures.



SCALLOP PDT RECOMMENDATIONS

SCALLOP RESOURCE ENHANCEMENT:

- The PDT continues to recommend that this remain a Medium Priority and recommends minor changes to the language of this priority.
- Noted that this priority would best be refined to focus in on areas that have shown promise or exclude tools that do not seem to be effective or scalable.

WIND:

- The PDT recommends deprioritizing wind research to a General Priority and did not recommend any changes to the language of this priority.
- Noted that at the current stage of offshore wind development, further understanding of impacts is still valuable.



SCALLOP PDT RECOMMENDATIONS

TURTLES:

- Several PDT members suggested this priority be removed from the list for this cycles, others preferred to see it remain on the list as either a Medium or General Priority.
- Those that supported removing or deprioritizing turtle research noted that loggerhead sea turtle bycatch concerns have not been noted for several years and that other scallop fishery and resource issue were in greater need of research funding.
- Those that supported maintaining turtle research as either a Medium or General Priority noted that it would:
 1. Be valuable to maintain continued monitoring of sea turtle behavior and any changes in overlap with the scallop fishery (e.g., tracking studies funded under previous RSA have offered insights in sea turtle movement patterns and potential shifts (due to changing climate conditions)
 2. Monitoring can also include documenting the types of injuries observed in captured turtles over time, which can provide a window into possible population-level effects of human interaction (possibly including dredge interactions).



SCALLOP RESEARCH SET-ASIDE PRIORITIES

Next steps

- Council staff will incorporate Committee recommendations in a revised copy for the June Council Meeting
- While we're unlikely to see a 2027 RSA NOFO, priority language can guide modifications to existing awards and will be included in the 2028 RSA NOFO.



WRAP-UP – FRAMEWORK 42 MEETING SCHEDULE

- **June 23-25** – New England Council Meeting (Mystic, CT); Framework 42 initiated
- **August 26-27** – Scallop PDT 2-day meeting to review 2026 survey information (Bourne, MA)
- **Early September** – Scallop AP & Committee meetings
- **September 15-17** – New England Council Meeting (Plymouth, MA); review 2026 survey data
- **October 8** – SSC Meeting to recommend OFL/ABC for FY 2027 and FY 2028 (default)
- **Mid-Late October** – Scallop AP & Committee meetings; define range of FW42 alternatives
- **Mid-Late November** – Scallop AP & Committee meetings; pick final preferred FW42 alternatives
- **December 8-10** – New England Council Meeting (Newport, RI); Council takes final action on FW42



BACKUP



New England Fishery
Management Council

1. IMPROVE MANAGEMENT CAPACITY, FLEXIBILITY, AND RESPONSIVENESS IN A CHANGING ENVIRONMENT

1.1 - Increase the capacity for and use of real-time data collection and monitoring in management, including industry-collected data, VTRs, auction data, LPUE, and other data sources.

1.2 - Develop a Management Strategy Evaluation model based on an understanding of scallop population dynamics, biological and oceanographic conditions, and fishery behaviors to inform Best Management Practices, including addressing ocean use conflict (e.g., offshore wind farms) changing resource distribution (e.g., related to climate change), and allocation scenarios (e.g., consolidated fishing fleets).

1.3 - Separate management of the Mid-Atlantic and Georges Bank resources, with individual OFL/ABCs and DAS separately allocated.

1.4 - Streamline the annual specifications setting process to increase capacity for addressing other fishery management challenges.

1.5 - Develop tools within the Scallop FMP to allow for in-season management

1.6 - Revise the Limited Access DAS carryover provision to reduce uncertainty in open-bottom harvest.

1.7 – Disperse fishing effort in high-density areas to reduce incidental mortality and vessel crowding.



2. IMPROVE THE RELIABILITY OF ANNUAL PROJECTIONS OF SCALLOP BIOMASS AND ABUNDANCE

2.1 - Evaluate Scallop Area Management Simulator (SAMS) model performance and associated uncertainty.

2.2 - Continue development of next generation projection model to allow for more flexible and precise projections.

2.3 - Establish a small-scale survey of access areas each year to provide additional data on the resource prior to the start of the fishing year on April 1.

2.4 - Increase survey effort at the end of an area's rotational cycle to reduce projection uncertainty.



3. EXPAND OPPORTUNITIES IN THE NGOM WHILE MAINTAINING CONSERVATIVE MANAGEMENT APPROACHES

3.1 - Extend the length of the NGOM season.

3.2 - Encourage greater dispersion of scallop fishing effort within the NGOM management area to areas other than Stellwagen Bank.

3.3 – Maintain opportunities for NGOM-permitted vessels while allowing orderly access to the NGOM scallop resource by the LAGC and LA components



4. IMPROVE ROTATIONAL MANAGEMENT PERFORMANCE AND ACCESS AREA FISHING OPPORTUNITIES

4.1 - Improve stability of harvest from access areas.

- Multiple possible management measures under this Strategy, including effort controls in access areas, recruitment closures, and other adjustments to rotational management practice.

4.2 - Reconsider development of an access area on the Northern Edge.



5. IMPROVE FISHING PRACTICES TO MINIMIZE INCIDENTAL SCALLOP MORTALITY, BYCATCH, AND IMPACTS ON HABITAT AND PROTECTED RESOURCES

5.1 - Improve scallop industry compliance around best fishing practices through outreach and education efforts.

5.2 - Increase size selectivity using gear modifications to reduce catch of juvenile scallops.

5.3 - Increase use of other gear modifications.

5.4 - Regulate best fishing practices, such as restrictions on high-grading, deck-loading, and excessive tow-times, and monitoring using deck cameras as part of an electronic monitoring (EM) program.

5.5 - Reduce bycatch and habitat impacts from scallop dredging.



6. MAINTAIN THE ECONOMIC VIABILITY OF THE SCALLOP FLEET

6.1 - Develop lower-cost tools, potentially including an EM program, to meet the industry's observer requirement and collect biological and discard data.

6.2 - Allow for consolidation of the Limited Access fleet.

7. MAINTAIN A DYNAMIC SCALLOP RSA PROGRAM TO FUND SCALLOP RESEARCH AND RESOURCE SURVEYS

7.1 - Expand the RSA set-aside for Gulf of Maine-focused research projects and surveys.

7.2 - Expand industry participation in RSA research and compensation fishing.

7.3 - Ensure equity between scallop industry partners with access to RSA compensation pounds and those without, while maintaining sufficient support for RSA-funded surveys and research.



8. DEVELOP THE REGULATORY, MANAGEMENT, AND FUNDING INFRASTRUCTURE TO SUPPORT A SCALLOP ENHANCEMENT PROGRAM

8.1 - Form a working group to identify appropriate areas for spat collection and settlement, develop best practices, and identify regulatory hurdles.

8.2 - Create a separate set-aside as a long-term source of funding for scallop enhancement projects.

9. IMPROVE SCALLOP INDUSTRY ENGAGEMENT AT MEETINGS OF THE COUNCIL'S SCALLOP PDT, AP, AND COMMITTEE

9.1 - Increase outreach to members of the scallop industry that are not represented on or are unaware of the Scallop Advisory Panel.

