

Framework 9 Update

**Fiona Hogan, NEFMC Staff
Monkfish PDT Chair**

**Monkfish Committee
meeting
April 7, 2015**



Outline of Agenda

- ▶ Review Framework 9 alternatives
- ▶ Review PDT memo regarding Framework 9
- ▶ Review PDT analyses
- ▶ Other business



Framework 9 – Purpose and Need

- ▶ **Primary objective:** to revise existing management measures to achieve catch limits
- ▶ **Draft alternatives**
 - ▶ Modify current DAS/trip limit system
 - ▶ Modify monkfish possession limits



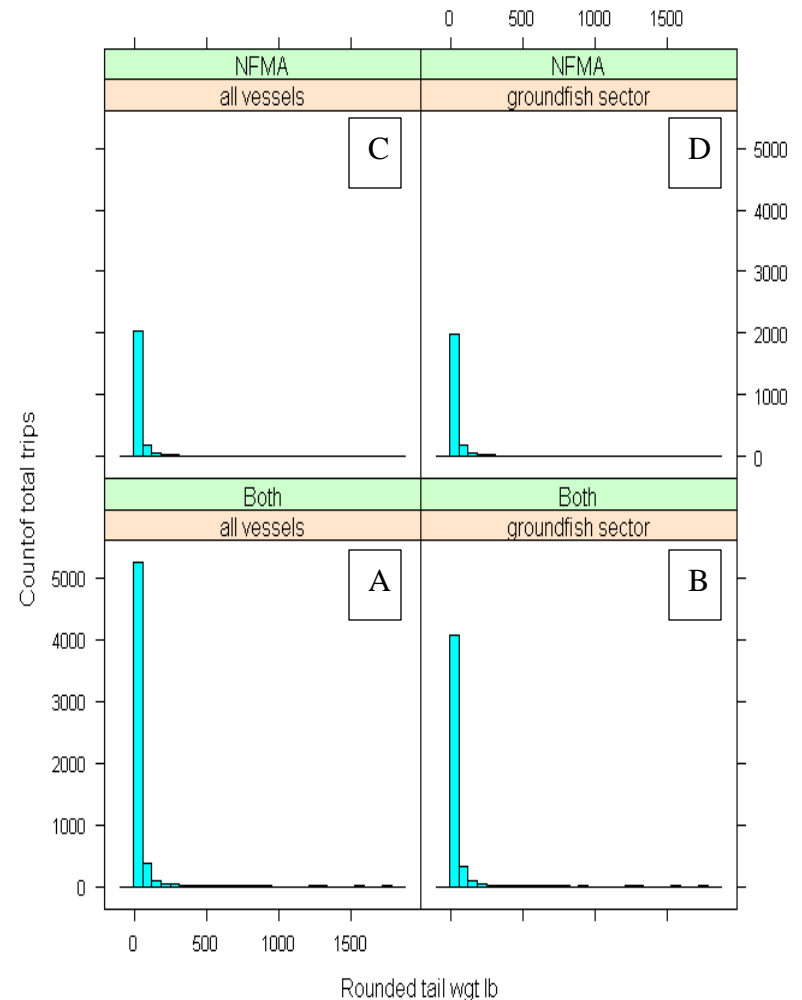
1.1.1 Allow vessels to declare a NE multispecies DAS at sea

- ▶ **4 alternatives to No Action**
 - ▶ Option 2: All C, D, or H vessels, sector and common pool, in both areas
 - ▶ Option 3: Only C, D, or H sector vessels in both areas
 - ▶ Option 4: Only C, D, or H vessels, sector and common pool, in NFMA
 - ▶ Option 5: Only C, D, or H sector vessels in NFMA



1.1.1 Analysis

- ▶ PDT estimated number of trips landing various amount of monkfish (in lb of tail weight)
- ▶ Majority are showing low amounts
- ▶ Difficult to determine appropriate possession limit, e.g. 5% of total catch



1.1.1 What trips qualify?

- ▶ Should this only apply to trips already on a monkfish DAS?
- ▶ Should a vessel go from no DAS limit to the monkfish DAS limit while at sea?
- ▶ Should this be restricted to trips already on a monkfish DAS?

No DAS incidental limit
E.g. 5% of total catch



NE multispecies DAS
incidental limit (50 to
600 lb/DAS)



Monkfish DAS limit
(500 to 1,600
lb/DAS)



1.1.2 SFMA at-sea monkfish DAS declaration

- ▶ Vessels on a NE multispecies DAS in the SFMA to declare a monkfish DAS while at sea

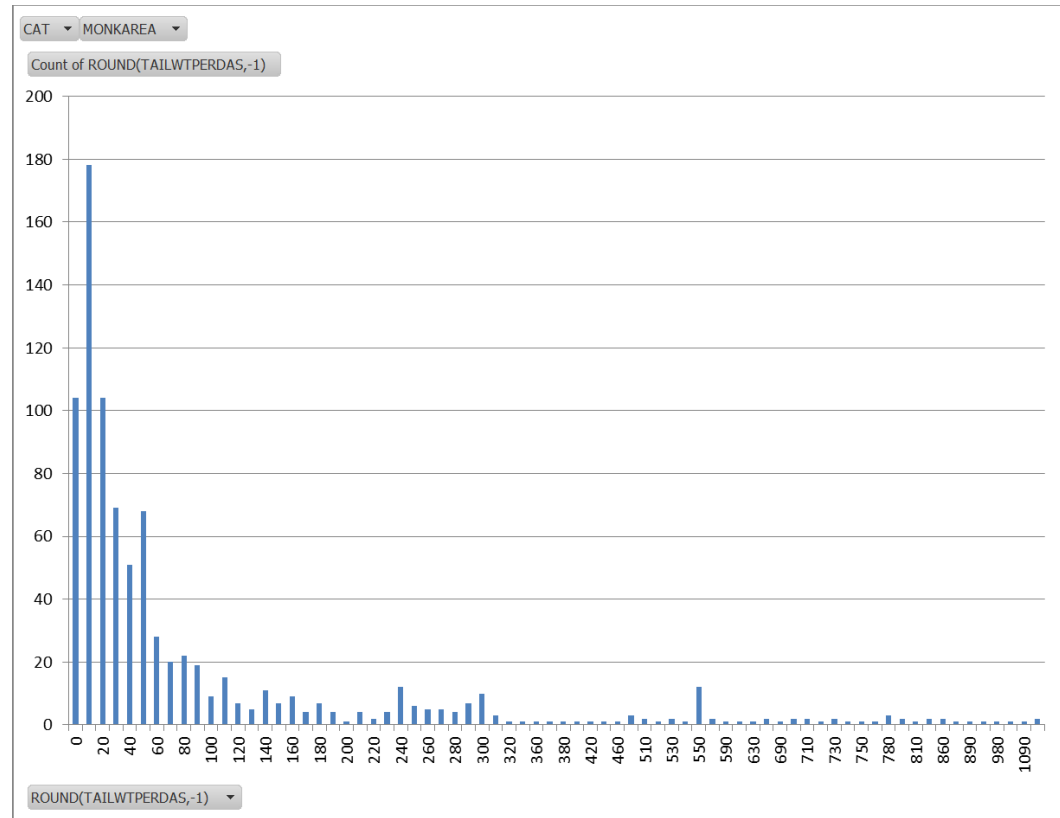
Northern Fishery Management Area		
Permit Category	A & C	B & D
Landing Limit ¹ (tail weight per DAS ²)	1,250 lb (3,638 lb whole weight)	600 lb (1,746 lb whole weight)

Southern Fishery Management Area			
Permit Category	A, C, or G	B, D, or H	F
Landing Limit ¹ (tail weight per DAS ²)	610 lb (1,776 lb whole weight)	500 lb (1,455 lb whole weight)	1,600 lb (4,656 lb whole weight)



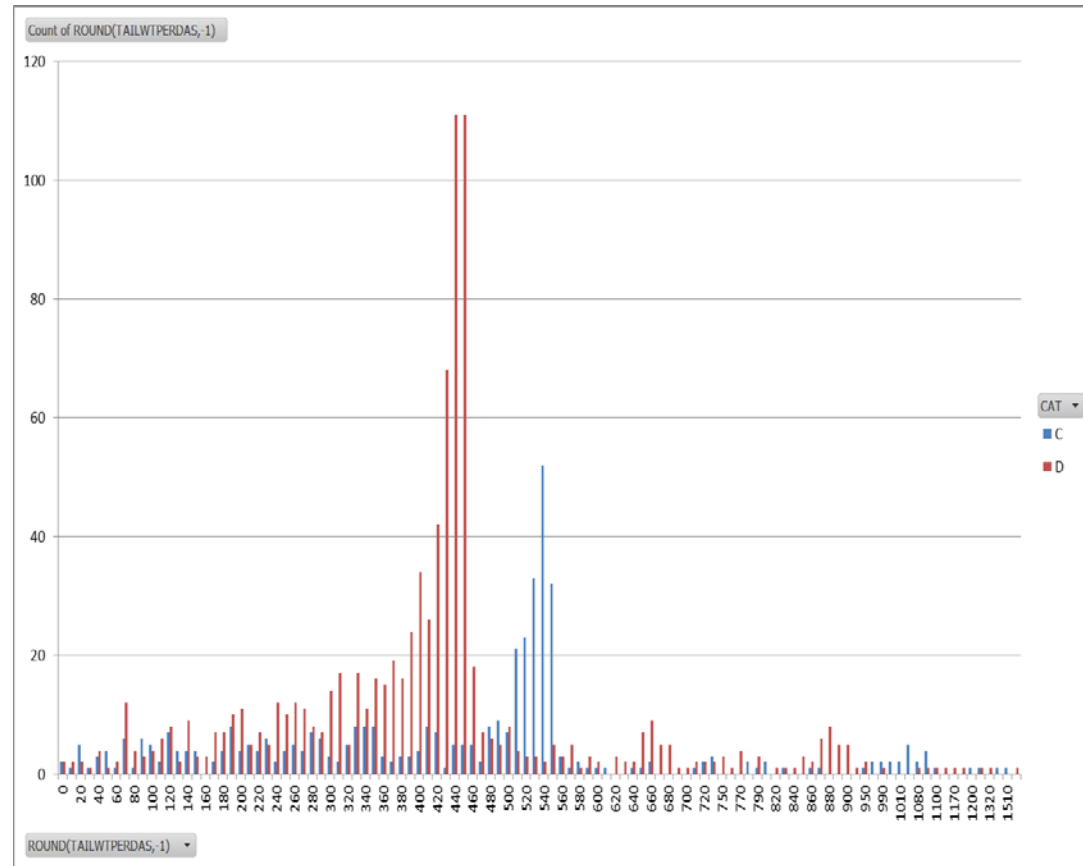
1.1.2 Analysis

- ▶ The PDT estimated incidental landings in SFMA in FY2013
- ▶ Majority of trips below incidental limits



1.1.2 Analysis

- ▶ Directed trips had expected pattern



1.1.3 Increase monkfish-only DAS based on higher groundfish common pool DAS counting

- ▶ Would increase allocation of monkfish DAS to offset the impact of NE multispecies DAS differential counting for common pool vessels
- ▶ Low number of permits affected by this
- ▶ Analysis did not suggest this was affecting operations

Permit category	Sum of NE multispecies DAS	Sum of monkfish DAS	Max Difference	Min Difference	Average Difference
C	85	67.41	0.96	-0.0007	0.25
D	104	87.79	0.9	-0.0007	0.17



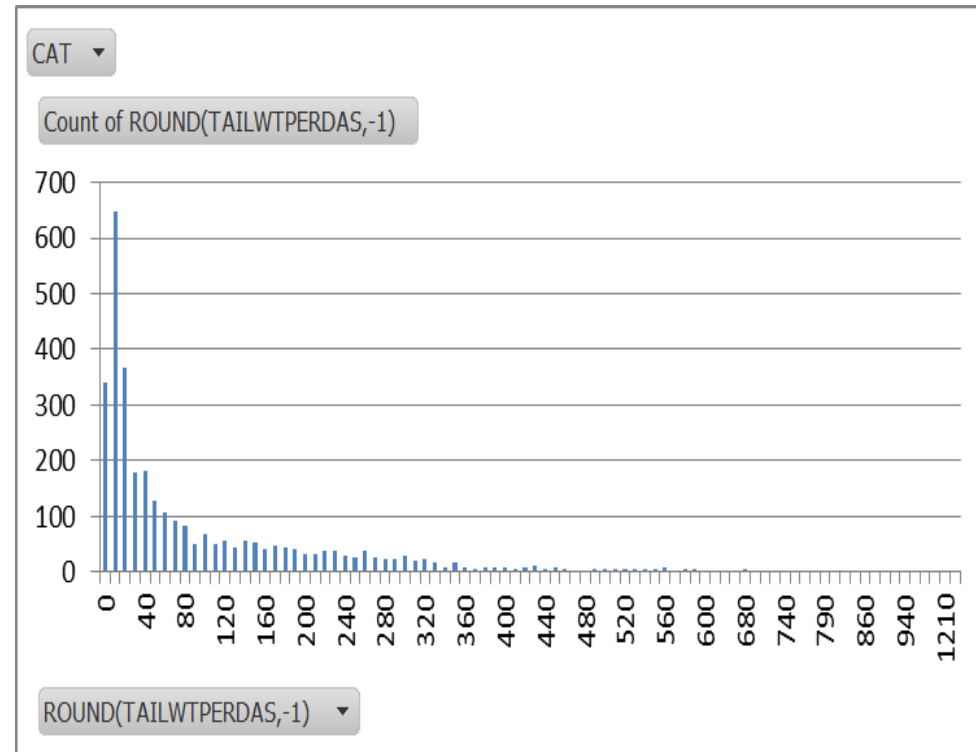
1.1.4 Modify DAS/trip limit allocation for Category F vessels

- ▶ Would increase Category F trip limit.
- ▶ Would monkfish DAS allocations or DAS accrual be revised based on increased trip limits?
- ▶ Is the objective of the offshore trip limit/DAS allocation measures to achieve a desired catch?
 - ▶ Proposed = 7,934 lb (2,200 lb/DAS × 3.6 DAS)
 - ▶ Current = 21,960 lb (1,600 lb/DAS × 13.725 DAS)

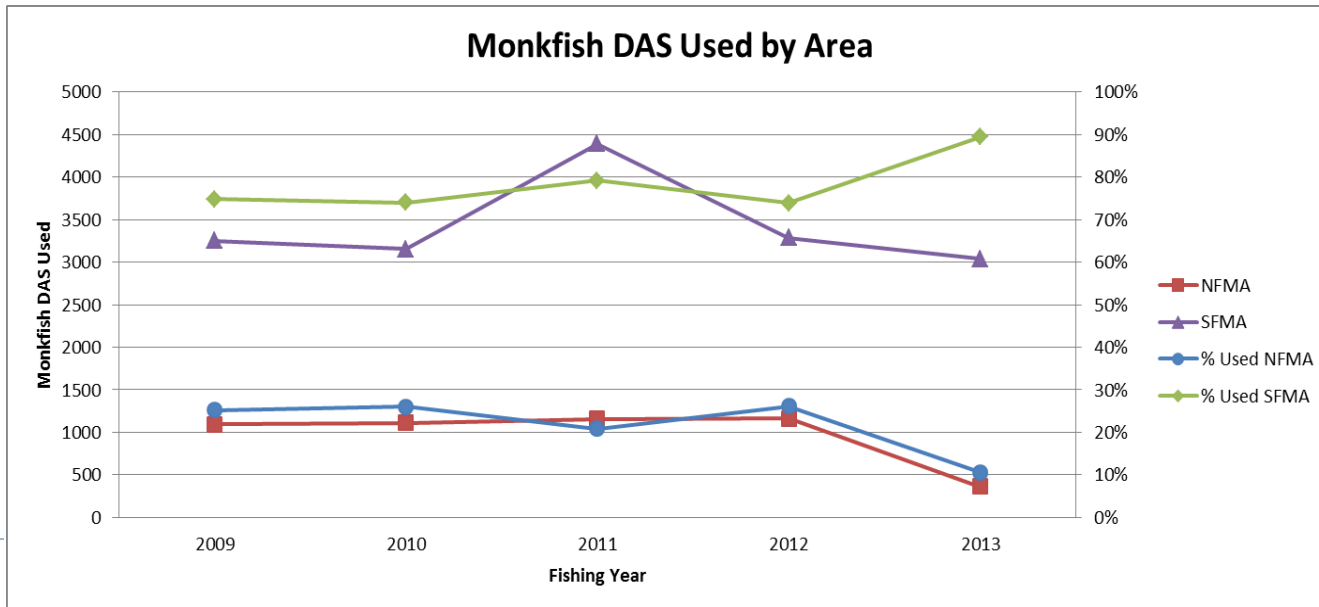
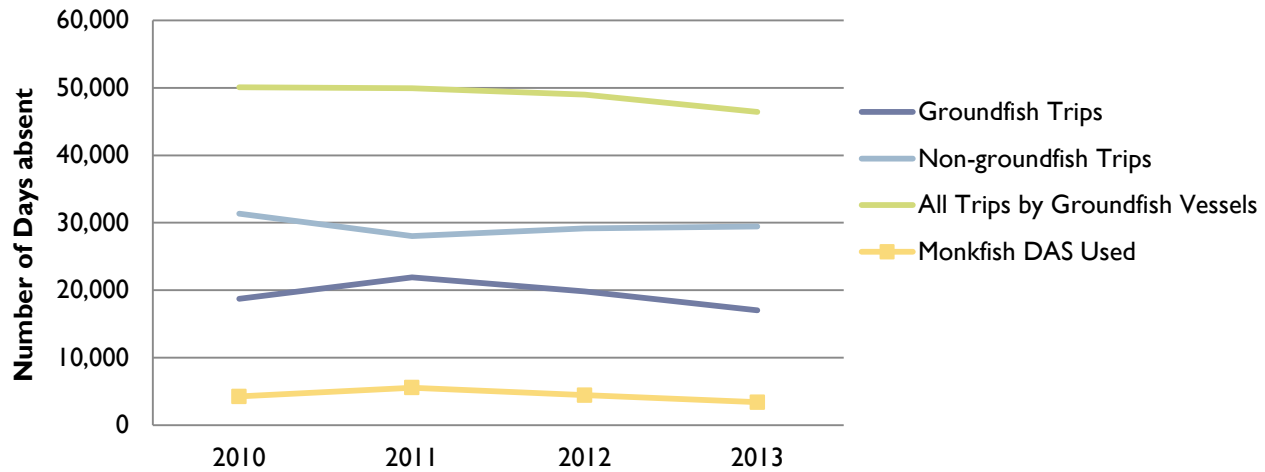


1.2 Modifications to Monkfish Possession Limits

- ▶ Would eliminate NFMA trip limit while on a NE multispecies DAS, effectively removing the need for a monkfish DAS in the NFMA
- ▶ PDT analyzed landings per NE multispecies DAS for C, D, and E permits in NFMA



1.2 Analysis



PDT tasking

- ▶ Allowing the use of less than 10 inch mesh in a stand-up gillnet while on a monkfish DAS
- ▶ Allowing a vessel to re-declare from a monkfish DAS to a monkfish RSA DAS while at sea



RSA DAS declaration while at sea

- ▶ Is the intent of this to charge monkfish RSA DAS for the entire trip or only part of the trip?



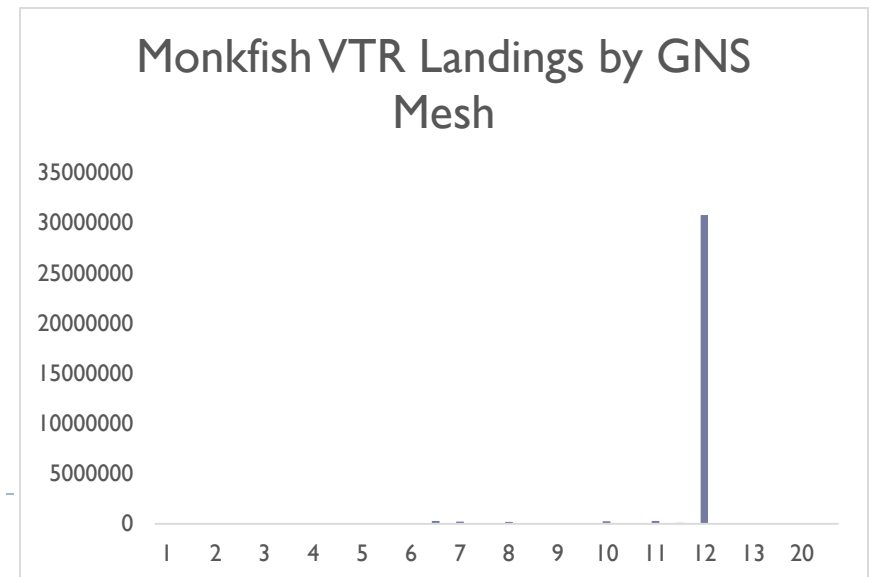
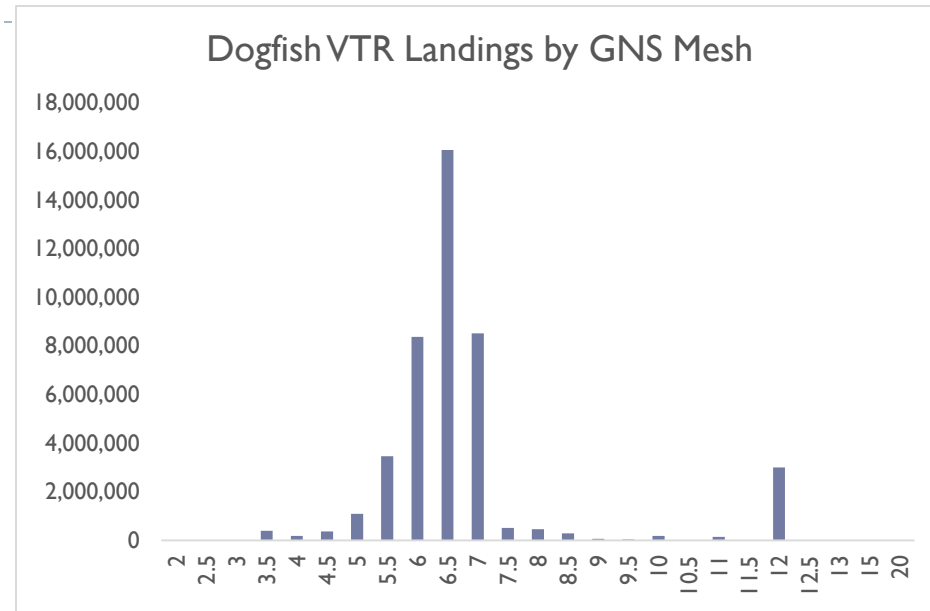
Less than 10 inch mesh

- ▶ Rationale: increase profitability of trips by allowing targeting of dogfish on the same trip
- ▶ Currently, use of less than 10 inch mesh on monkfish DAS is prohibited
- ▶ This has been occurring in the past – need from industry
- ▶ Original FMP goal #3 – prevent increased fishing on immature monkfish



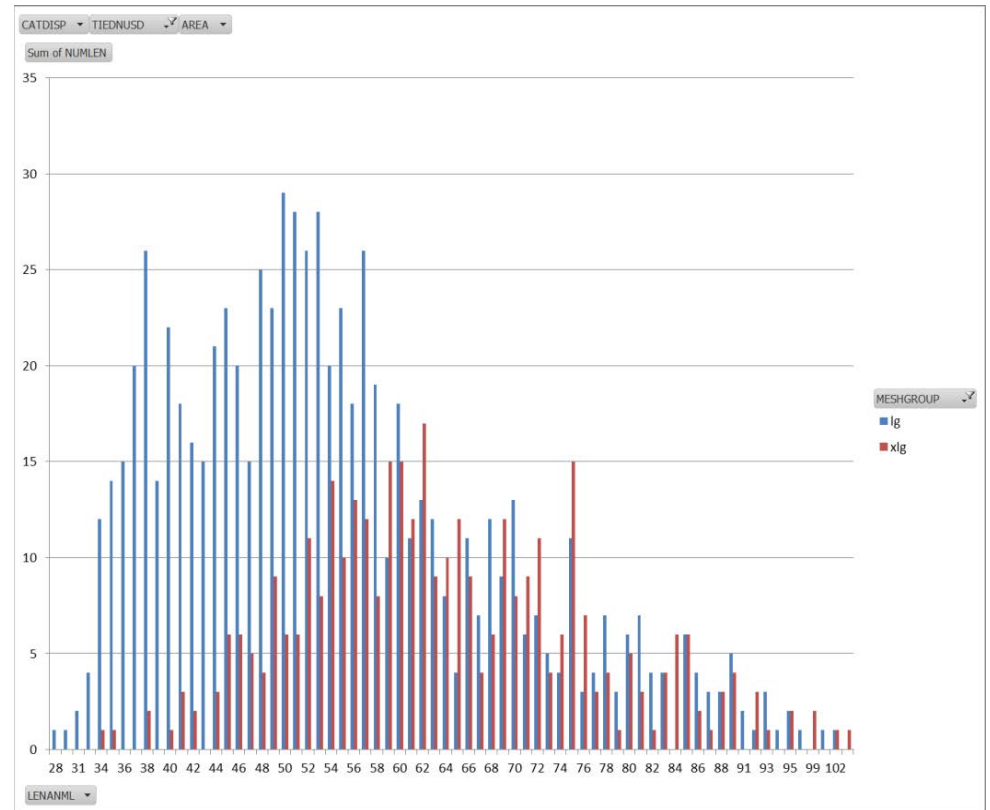
The analysis

- ▶ Observer data
- ▶ Large mesh (lg) = less than 8 inches
- ▶ Extra large mesh (xlg) = greater than 8 inches
- ▶ Tie downs

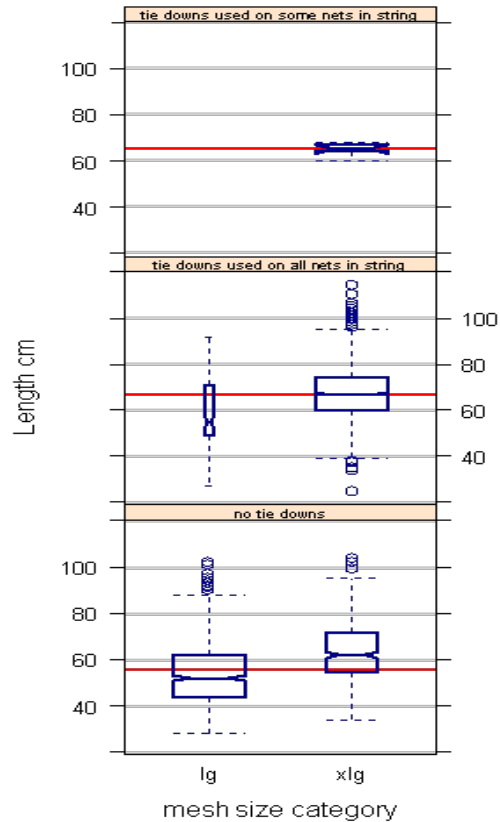


Observer data

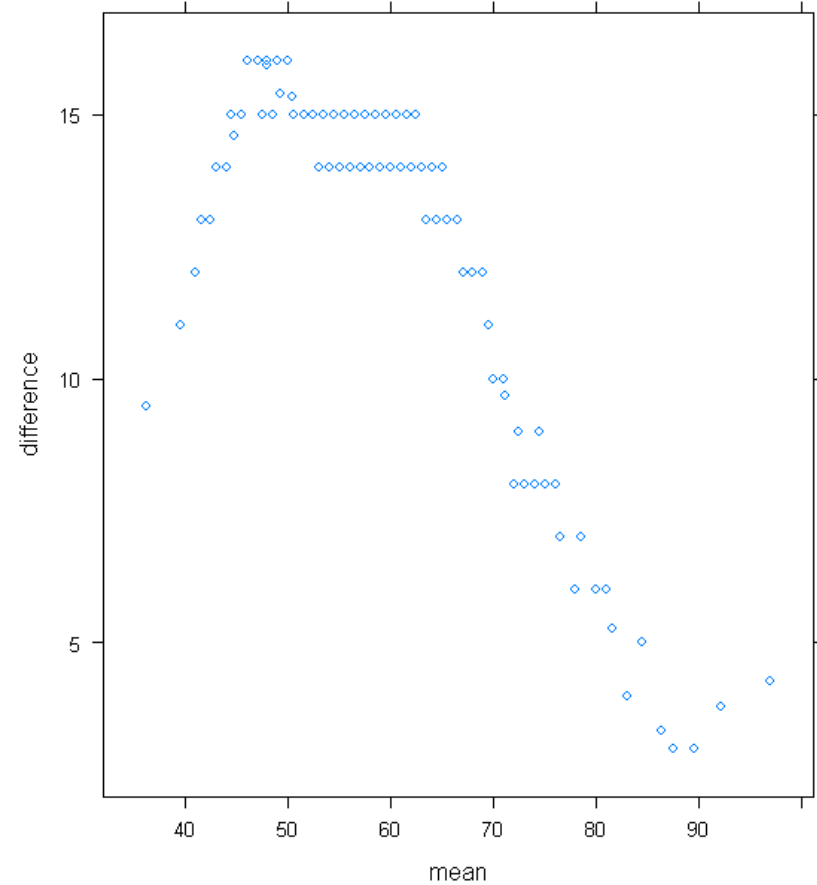
- ▶ There is a difference in monkfish lengths caught between the 2 different sizes



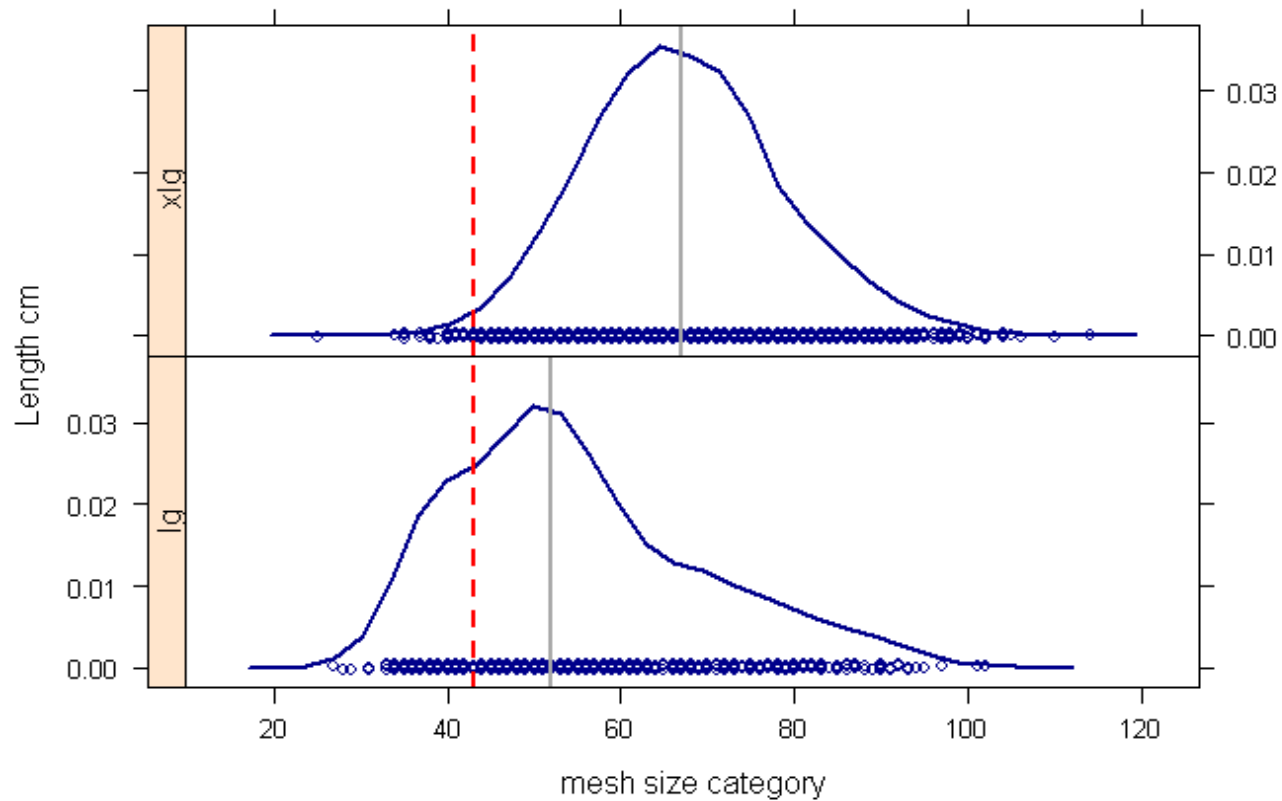
Statistical analysis



Tukey mean-difference plot of lengths for for extra large and large mesh



Length and density plot



VTR data

- ▶ Between 2000 and 2013 less than 1% of monkfish caught in SFMA was caught in less than 10 inch sink gillnets
- ▶ Tie downs
- ▶ Potential measure could:
 - ▶ restrict the allowable large mesh range to 5"-7" (relevant for dogfish) and
 - ▶ not allow the use of tie downs
- ▶ Impacts on other species



Conclusions

- ▶ Less than 10 inch mesh catching minimal amount of undersized monkfish
- ▶ Should be periodically evaluated, if implemented

