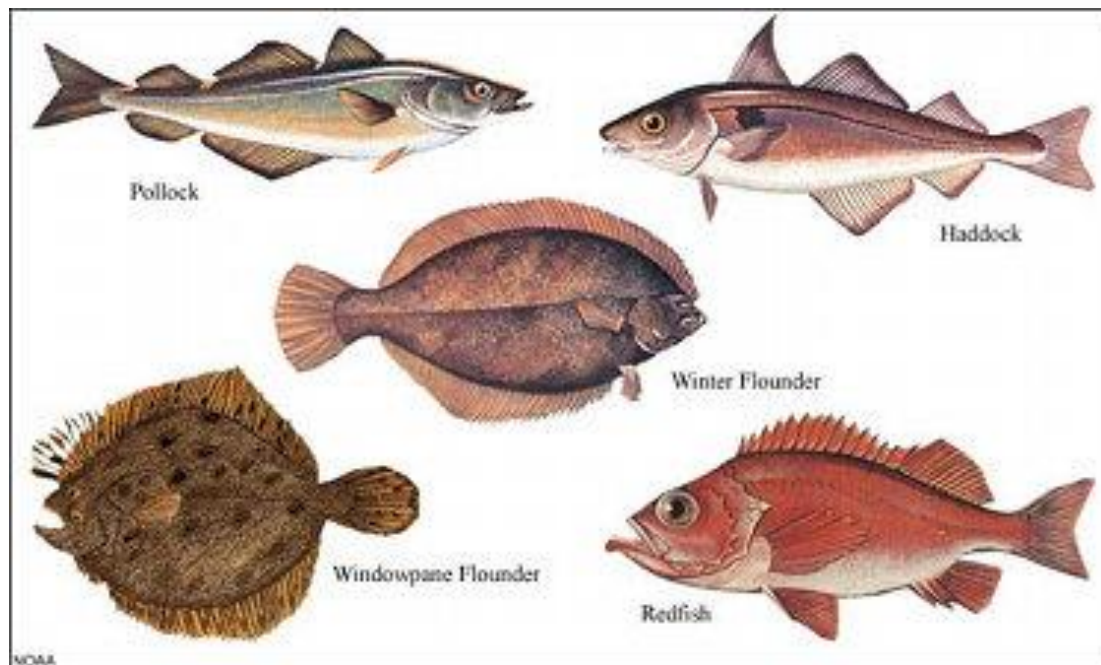




**NOAA  
FISHERIES**

Northeast  
Fisheries  
Science Center

# Groundfish Operational Assessments 2017 Results



<http://www.nefsc.noaa.gov/groundfish/operational-assessments-2017/>



**NOAA FISHERIES**

# *Operational Assessment Process Overview*

- Operational Assessments designed for balance between efficiency and improvements
- Assessment Oversight Panel reviewed plans
- Assessments carried out
- Peer Review Panel evaluated scientific merits of assessments and utility for management advice
- Plan Development Team work to inform SSC
- SSC catch advice

# *Enhancements to Process – Plan Bs, Catchability, and Ecosystem Context*

- Alternative basis for catch advice developed in advance for all analytical assessments – reviewed and approved by AOP
- Meeting started with presentation on ecosystem indices and trends applicable to the suite of stocks
  - Panel considered this context and commented extensively on ecosystem-related research needs
- “Flatfish day” started with presentation on cooperative research on survey catchability
  - Catchability estimates directly used in three empirical assessments (GOM winter, witch, GB yellowtail flounders)
  - Catchability info provided for context/comparison/diagnostics for analytical assessments

# Peer Review Results

- The Panel accepted all 19 assessments as a scientific basis for management and provided recommendations on stock status and catch advice
- Recommended stock status did not change for 18 of the 19 stocks, and improved for 1 stock
- *Note: Halibut assessment conducted by NEFMC contract, to be reviewed by SSC shortly*

# Recommended Status Score Card

## Overfished and Overfishing (4)

GOM Cod

Cape Cod/GOM Yellowtail Flounder

GB Yellowtail Flounder\*

SNE Yellowtail Flounder

## Not Overfished and Overfishing (0)

## Overfished but No Overfishing (4)

SNE Winter Flounder

Wolffish

Northern Windowpane

Ocean Pout

## Not Overfished and No Overfishing (8)

GB Haddock

GOM Haddock

**GB Winter Flounder (improved)**

Plaice

Redfish

White Hake

Pollock

Southern Windowpane Flounder

## Overfished and Overfishing Unknown (2)

GB Cod

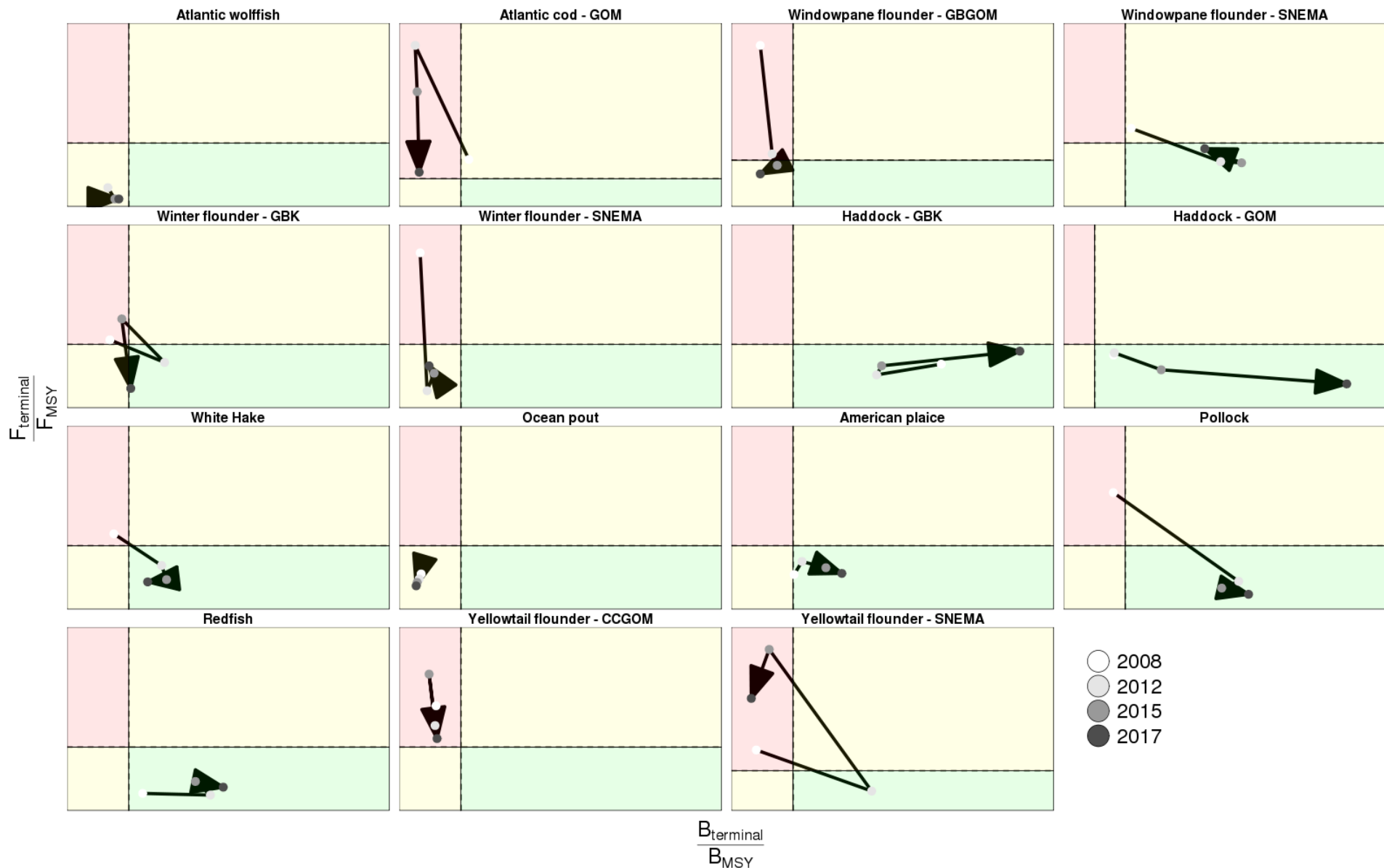
Witch Flounder

## Unknown and No Overfishing (1)

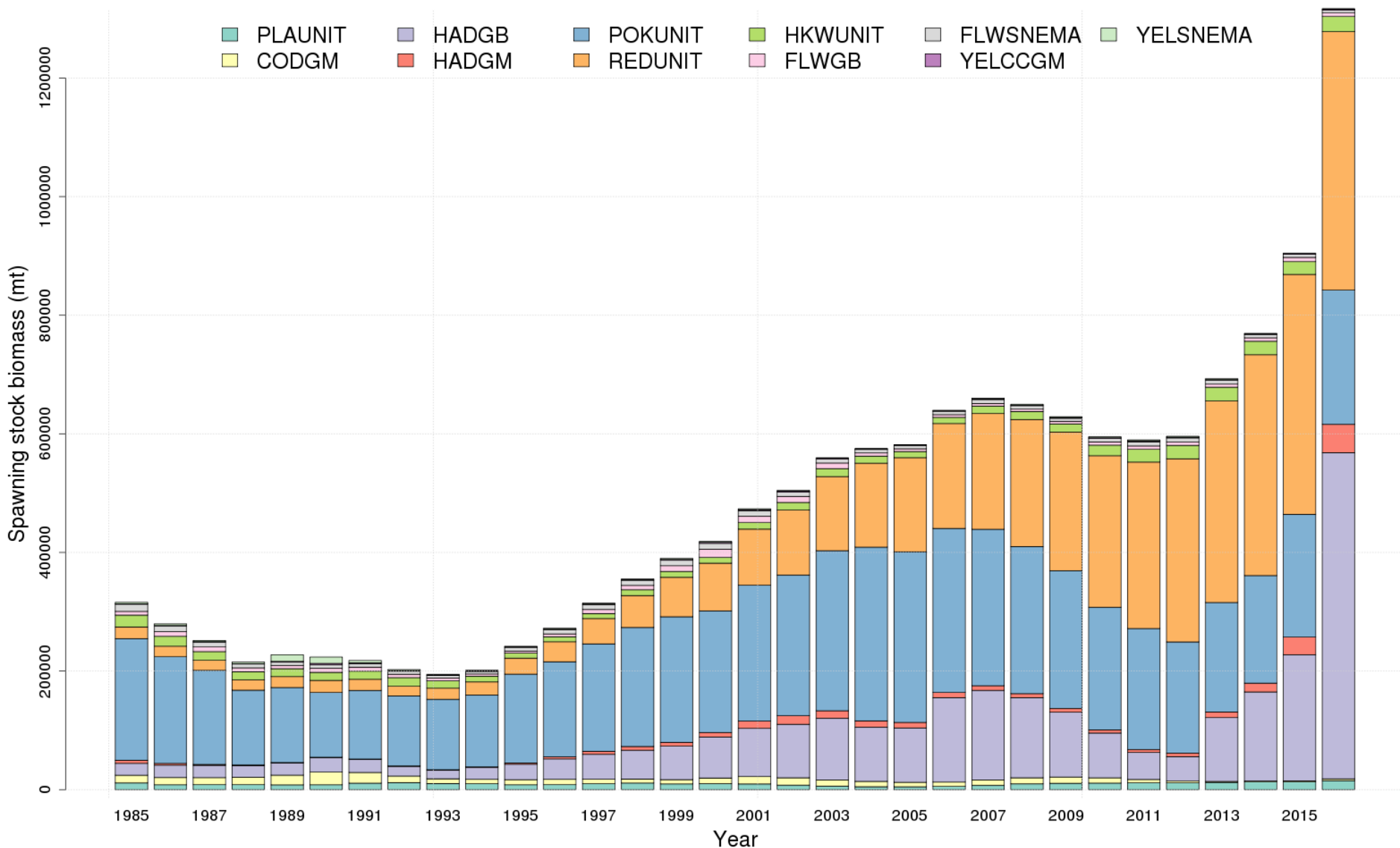
GM Winter Flounder

\*GB Yellowtail Flounder was reviewed by the Transboundary Resources Assessment Committee, so the Operational Assessment Peer Review Panel did not comment on status. The indication here is based on prior status determination.

# Trends in $F$ and $B$



# Spawning Stock Biomass



## *Positive signs*

“2013 stood out as a good year for producing strong recruitment year classes (other years, such as 2007, may also have been conducive to recruitment across stocks).”

### **Stocks with Strong 2013 YC**

GOM Haddock (huge year class)

GB Haddock (huge year class)

GB Cod (relative to recent years, cannot quantify)

American Plaice (relative to recent years)

Witch Flounder (cannot quantify)

Pollock (huge year class)

Redfish (relative to recent years)



# *Challenging situations*

“The review panel observed situations where fisheries stocks seemed unable to respond positively to management restrictions on catch.”

## **Stocks not responding to low catches**

Ocean Pout

Wolffish

GB Yellowtail

GOM Winter Flounder

SNE Winter Flounder

# Questions?

