

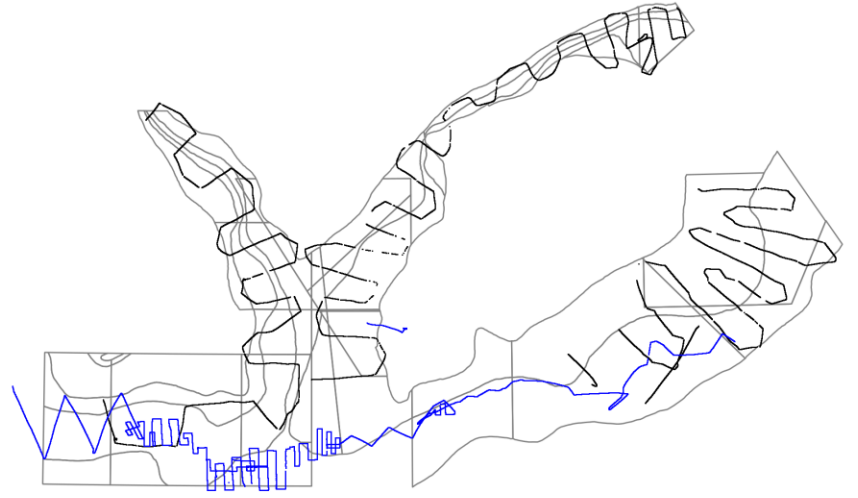
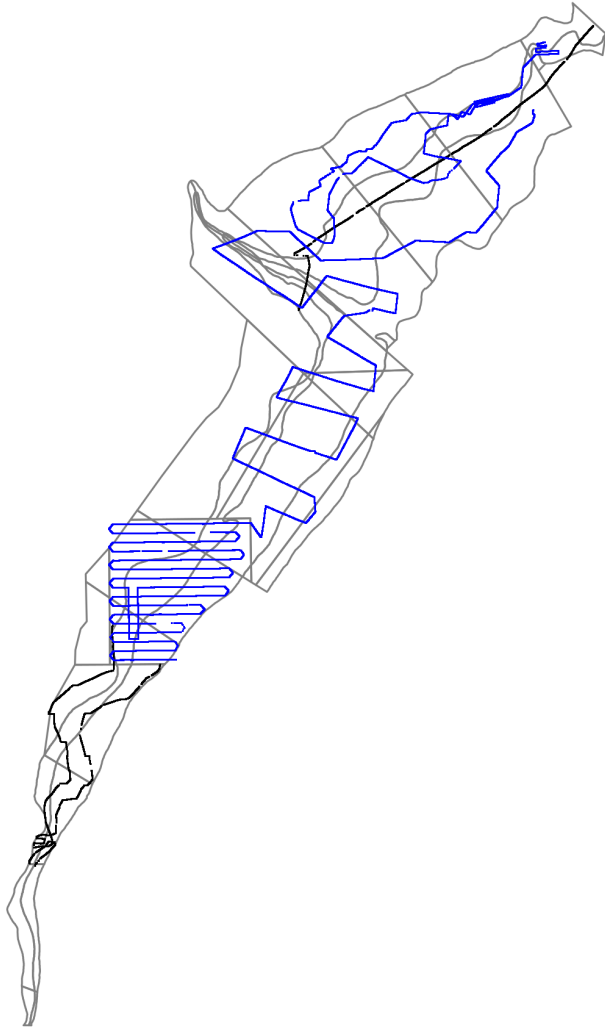
# 2014 HabCam Sea Scallop Survey

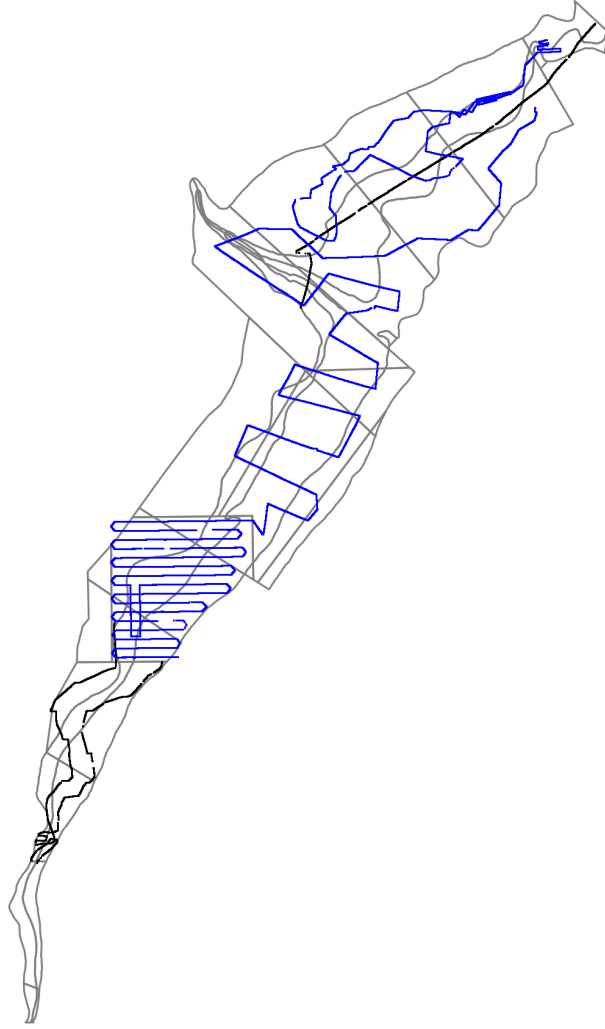
Burton Shank  
Jui-Han Chang  
Dvora Hart

NMFS / Northeast Fisheries Science Center, Woods Hole, MA

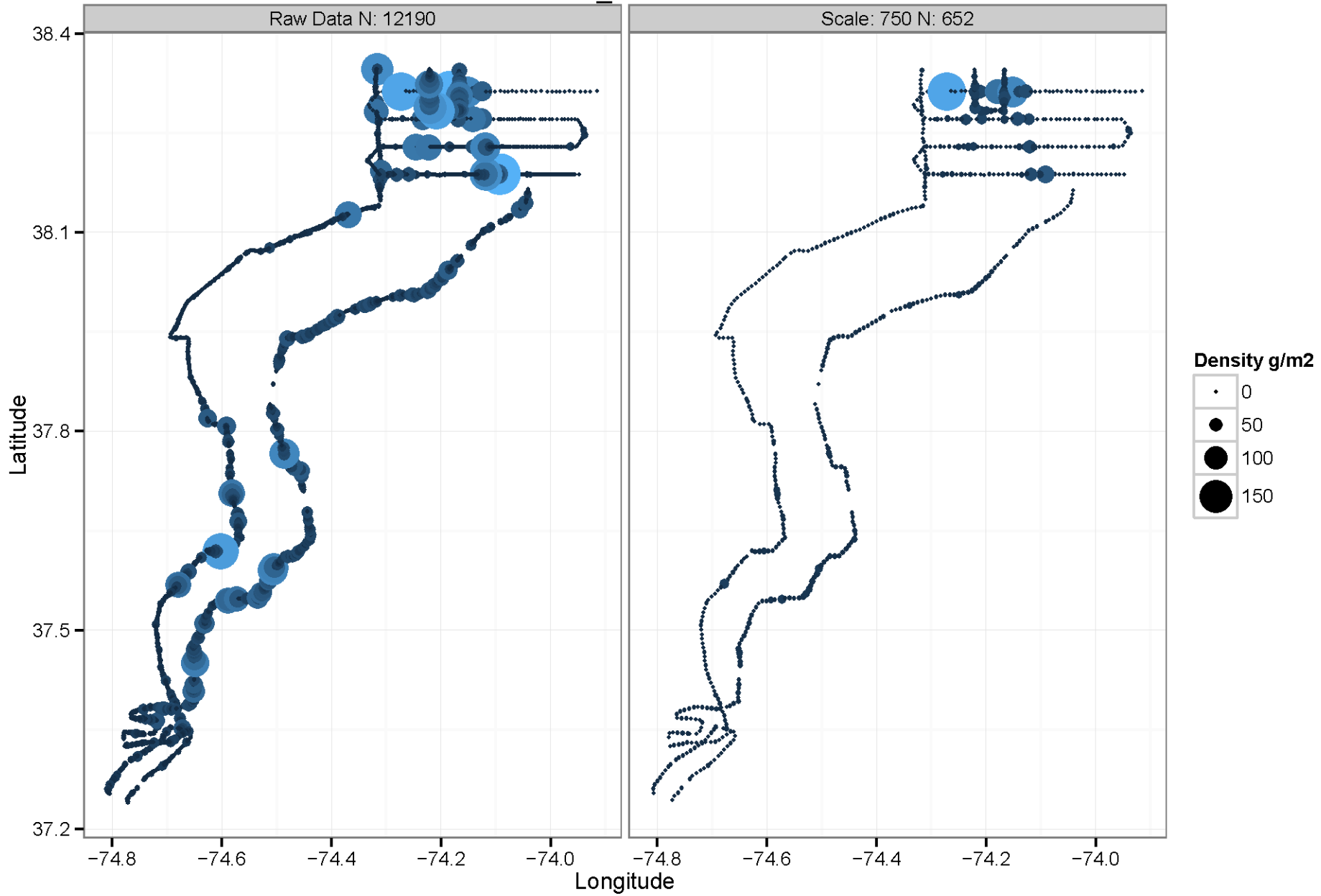
Richard Taylor  
Karen Bolles  
Norman Vine

HabCam Group / Arnies Fisheries, New Bedford, MA

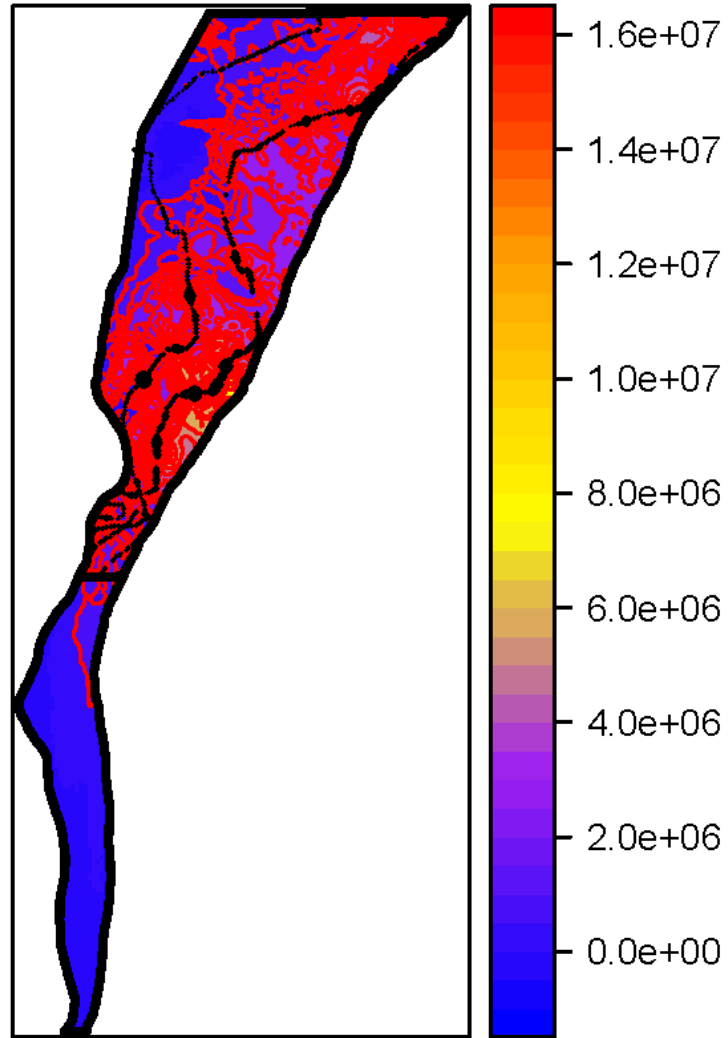




# DMV\_VB MAB



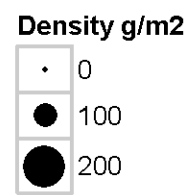
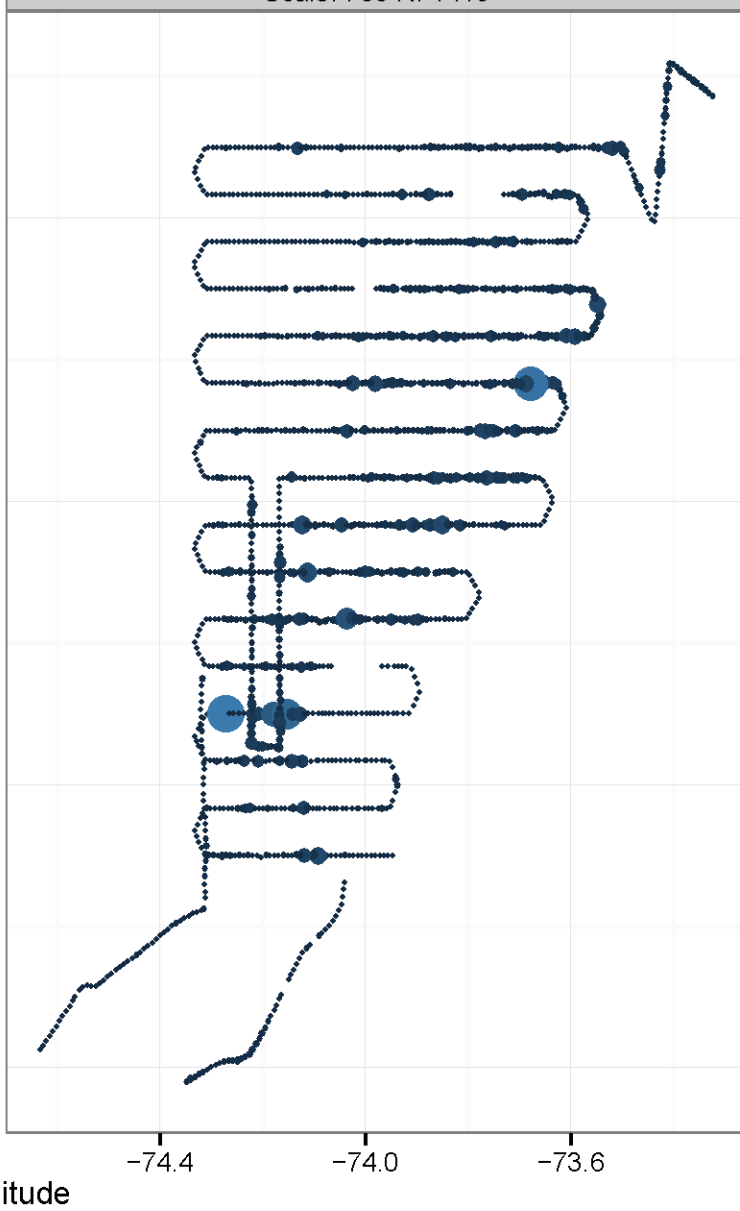
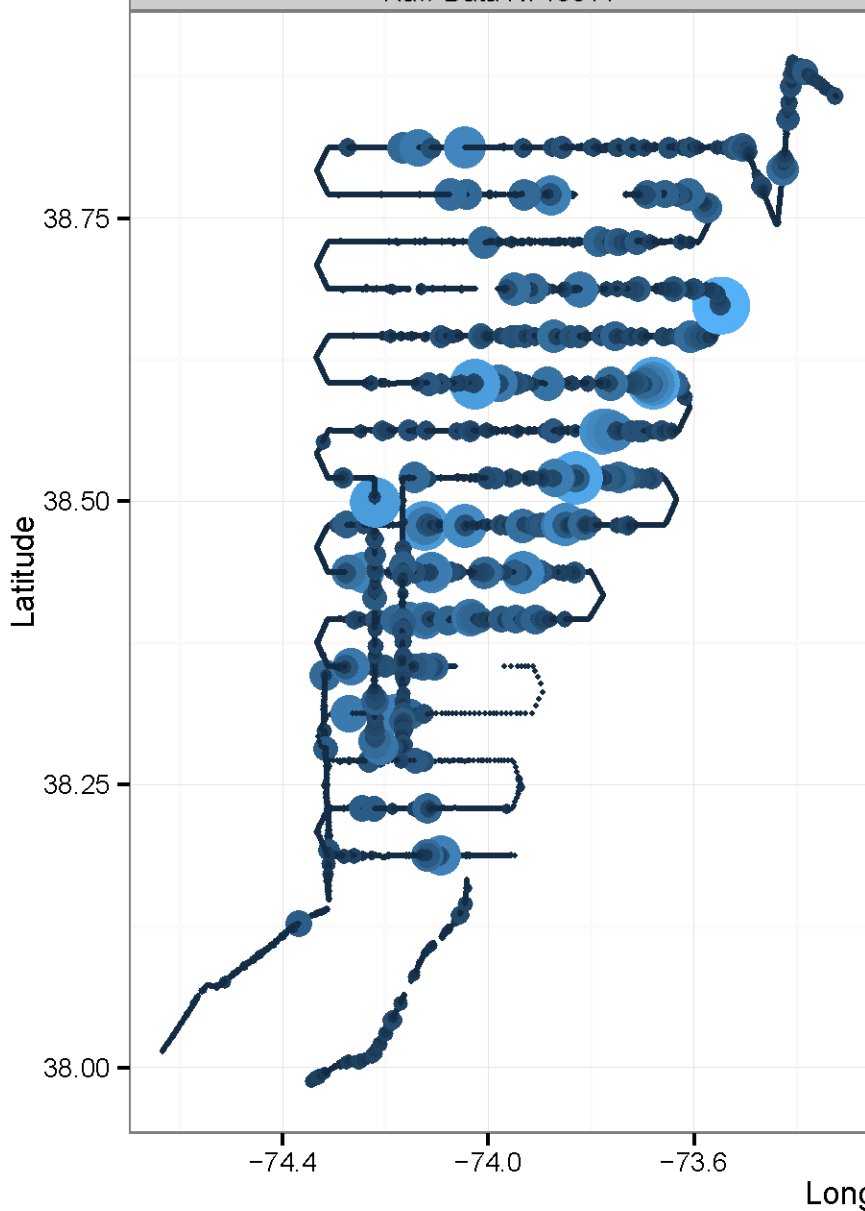
**DMV\_VB MAB**  
**GAM Angle:140 Final Est Scale:750**  
**Total Est:10597.5 CV:0.35**



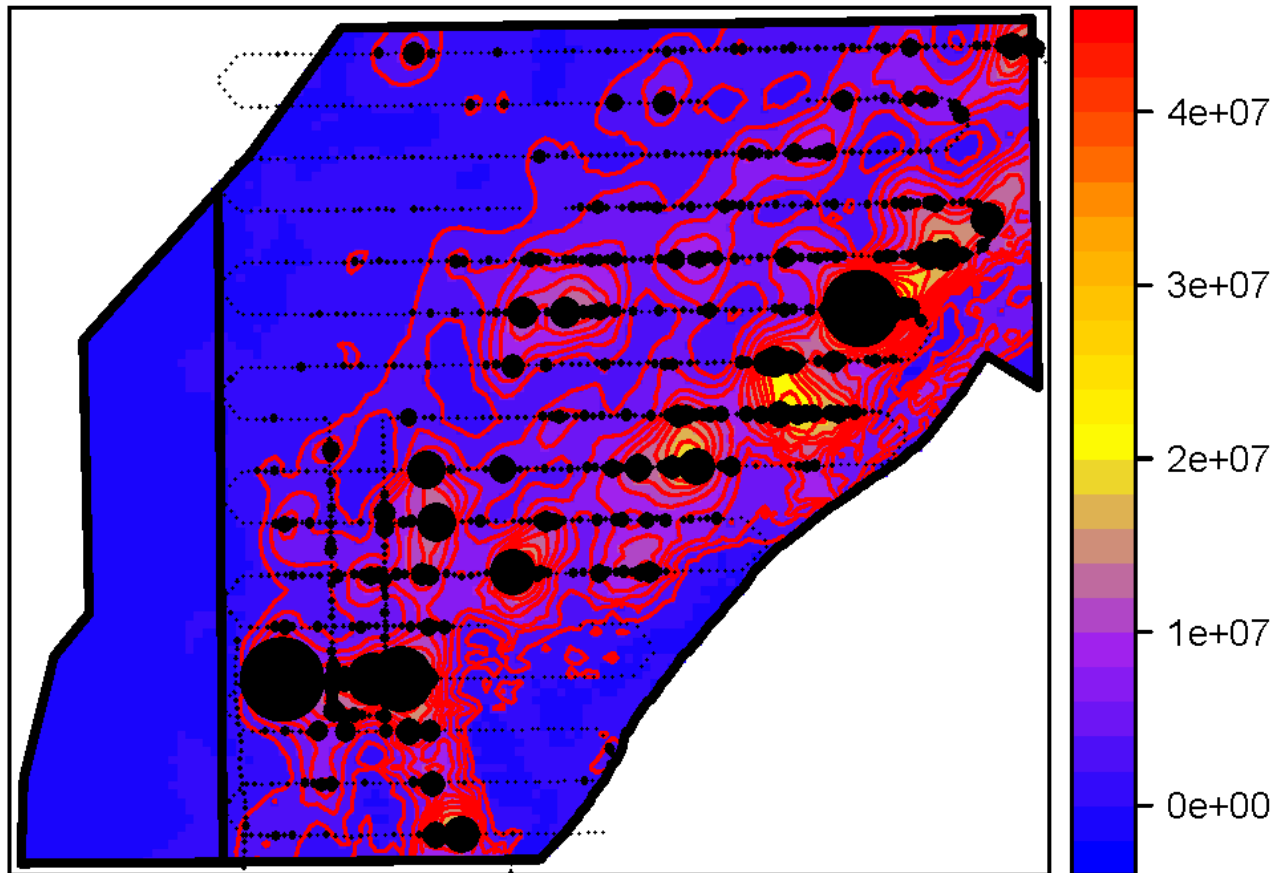
# ET MAB

Raw Data N: 13511

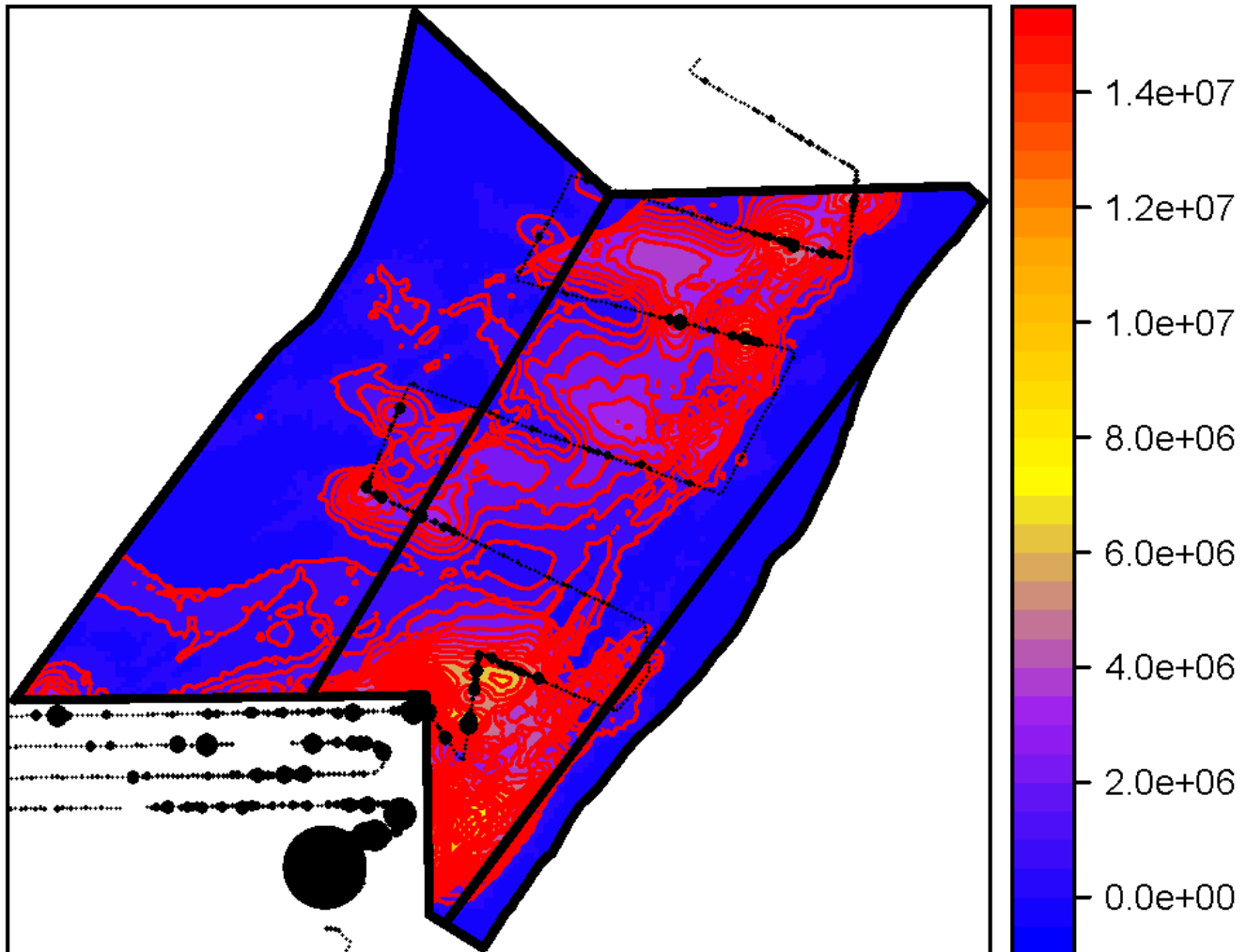
Scale: 750 N: 1416



ET MAB  
GAM Angle:40 Final Est Scale:750  
Total Est:36154.03 CV:0.1

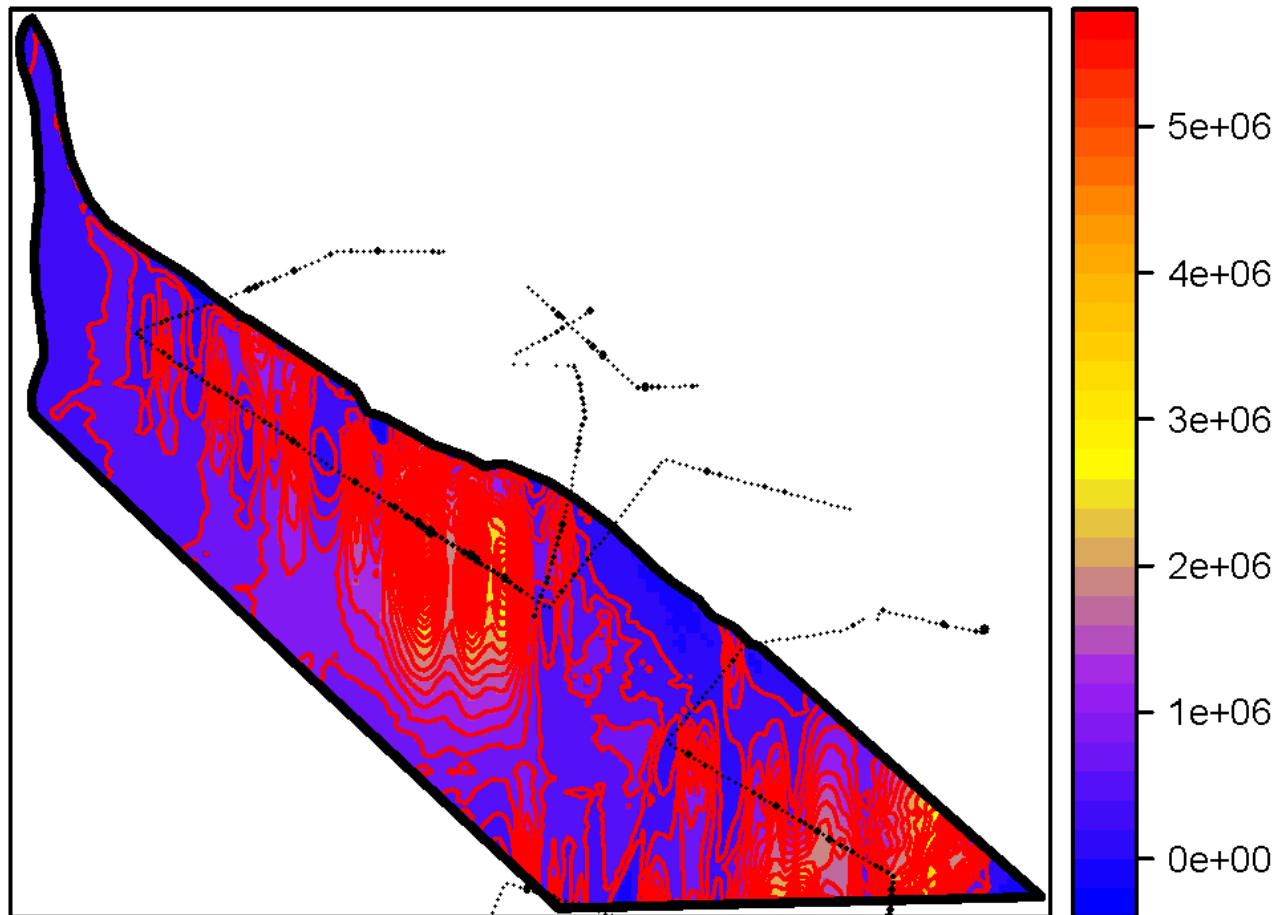


HC MAB  
GAM Angle:120 Final Est Scale:750  
Total Est:18041.34 CV:0.28

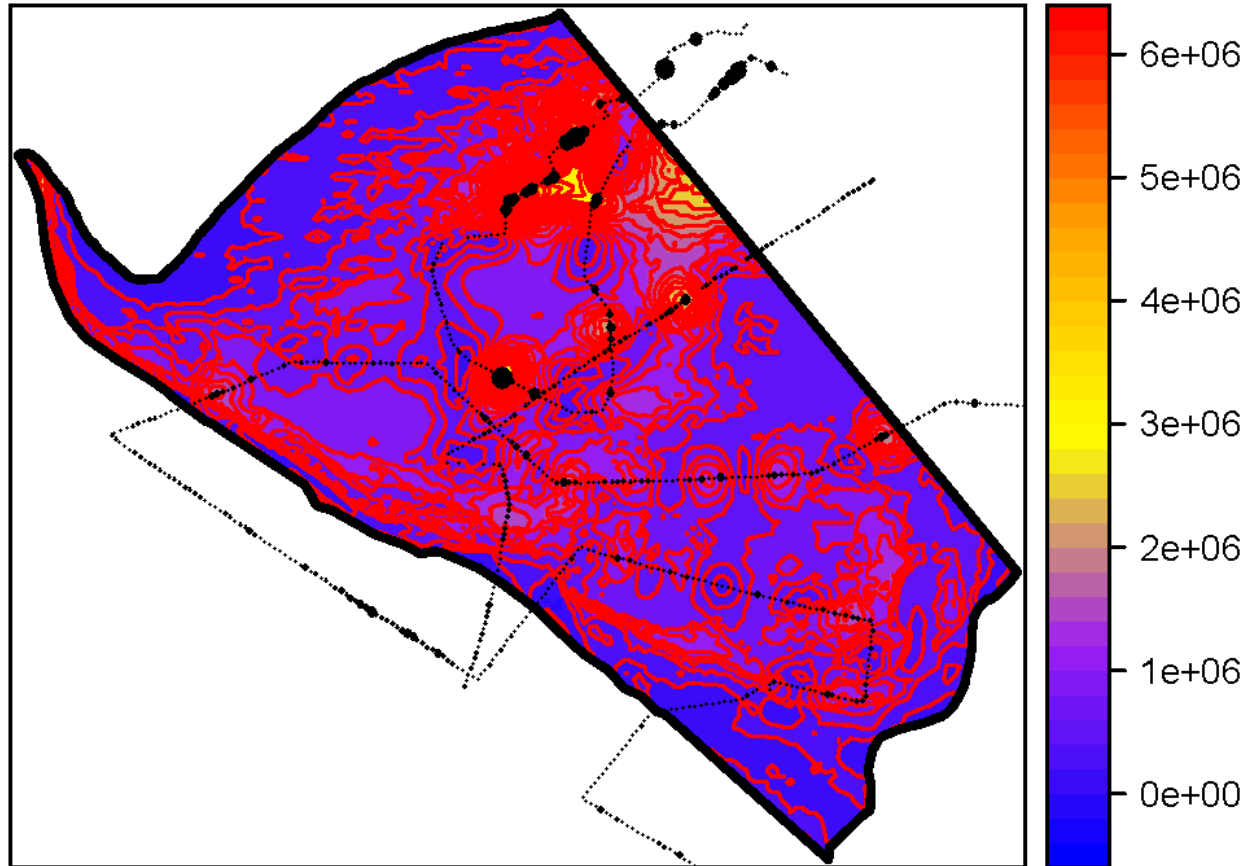




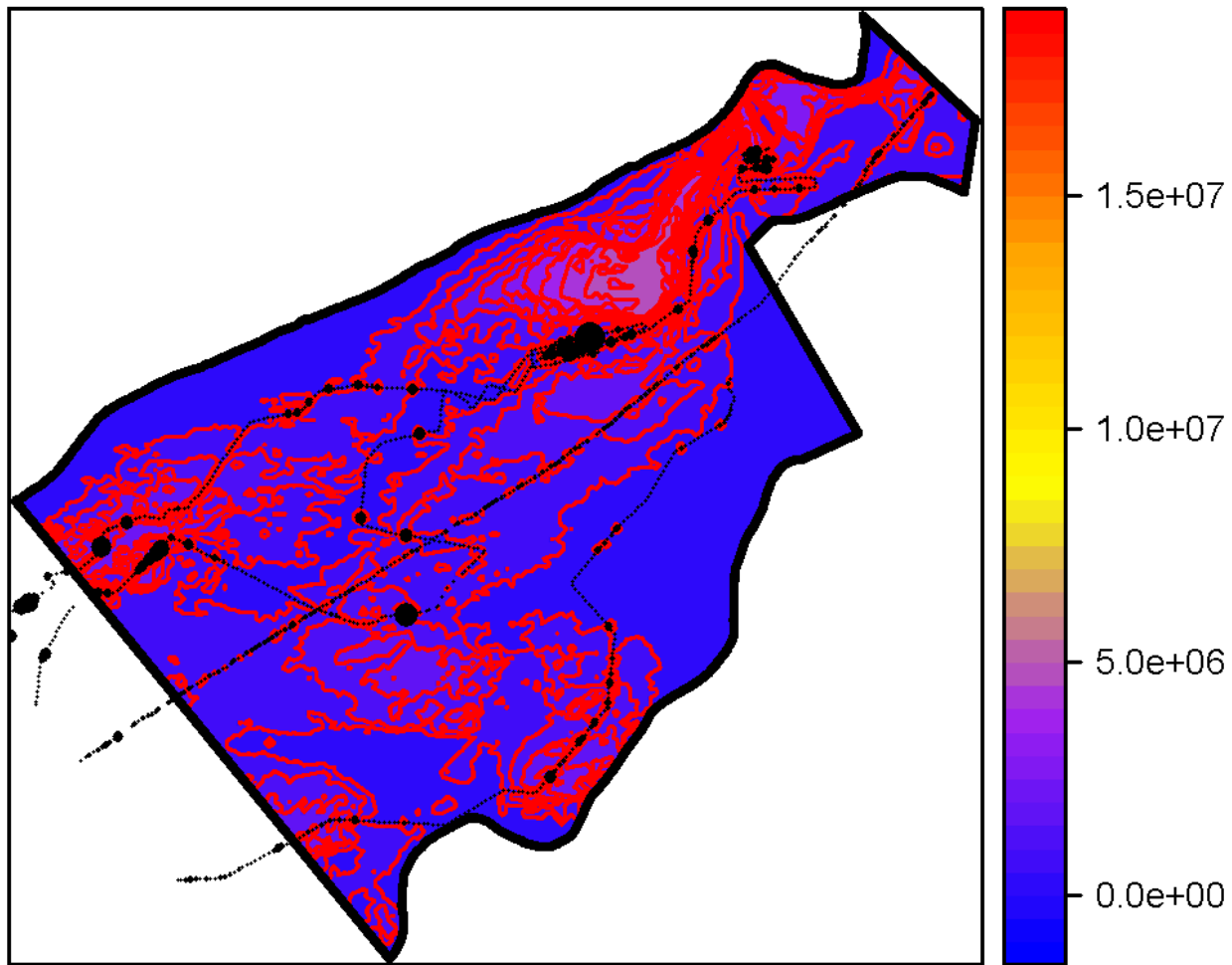
HCsr MAB  
GAM Angle:0 Final Est Scale:750  
Total Est:5029.68 CV:0.08



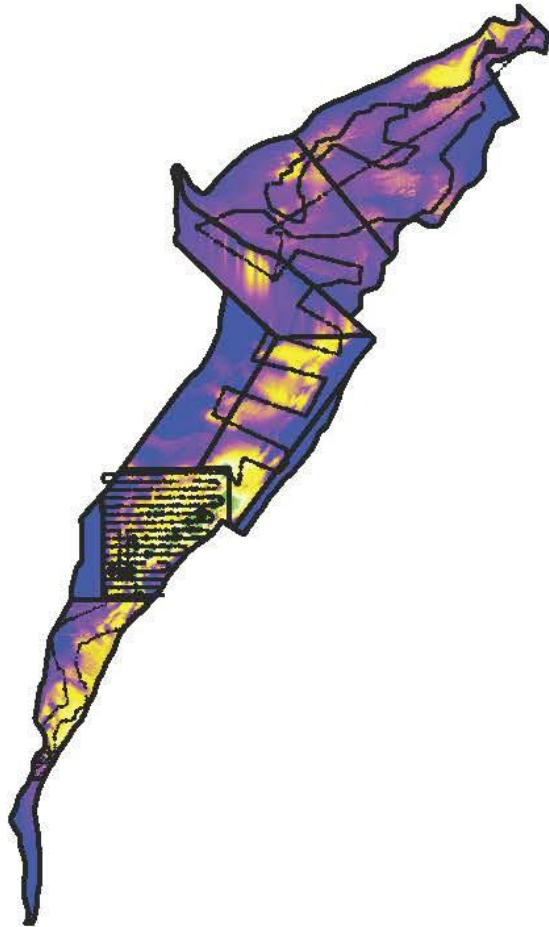
HCnr MAB  
GAM No Angle Final Est Scale:750  
Total Est:7726.76 CV:0.06



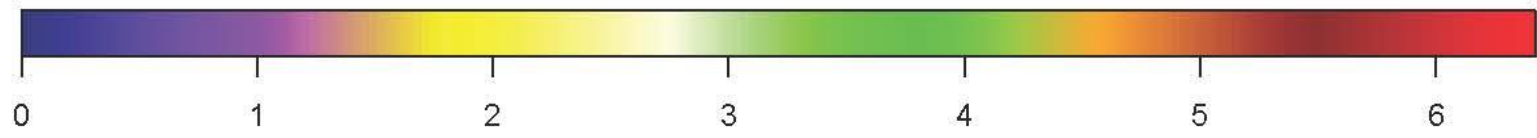
LI MAB  
GAM No Angle Final Est Scale:750  
Total Est:14304.6 CV:0.04

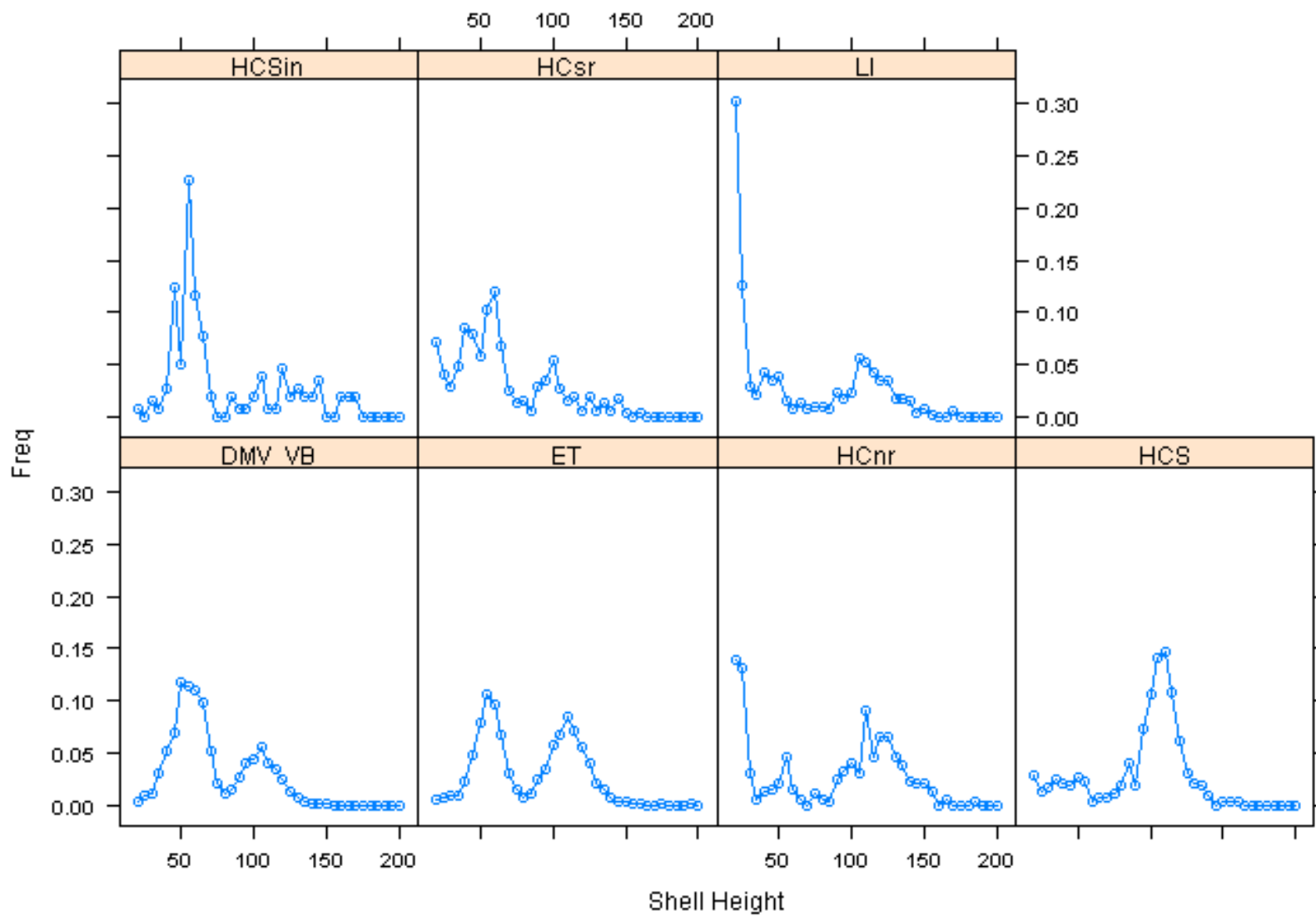


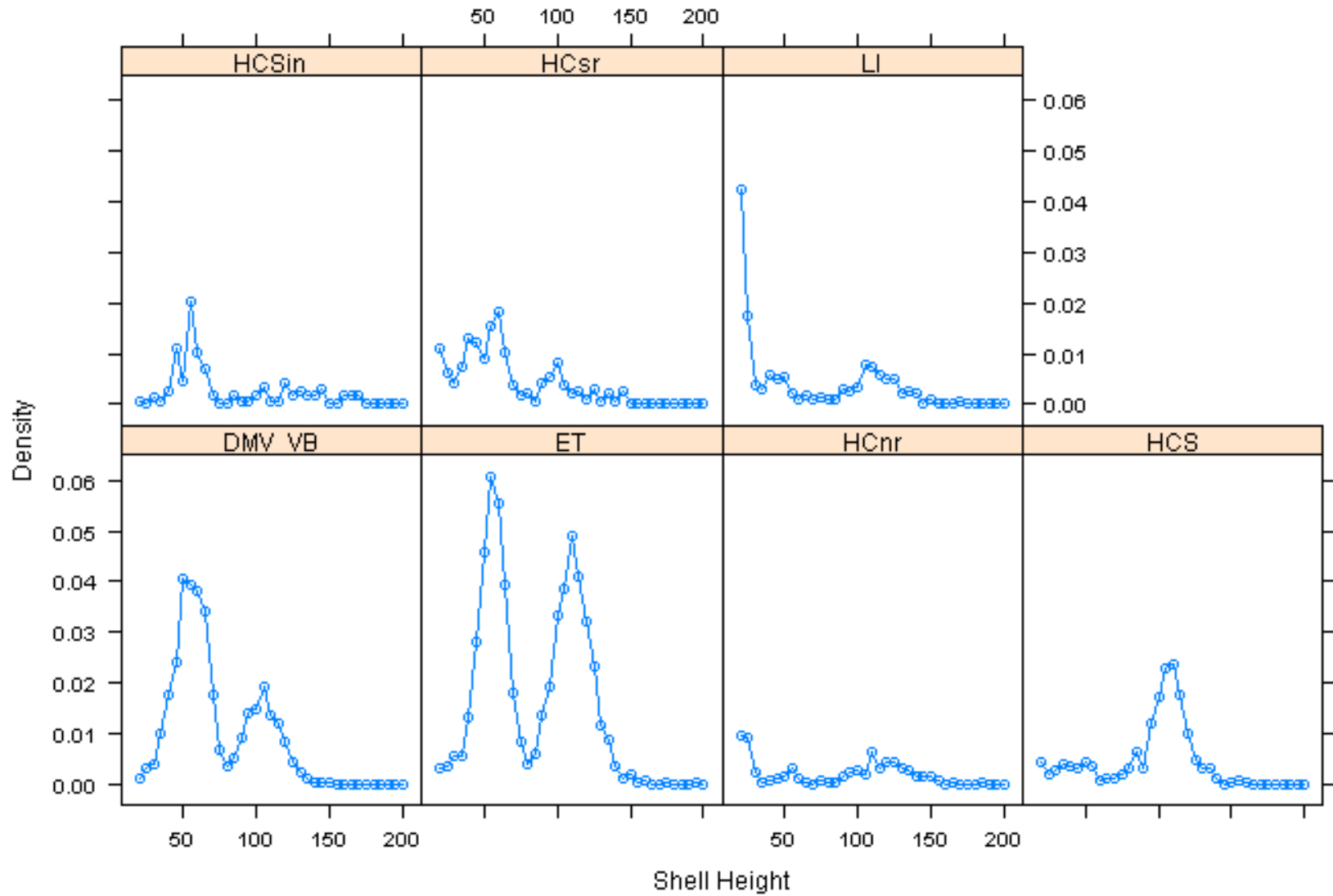
Prediction Unit: mt per 750 m<sup>2</sup>  
Observation Unit: g per m<sup>2</sup>



- 0
- 1
- 61
- 122
- 182





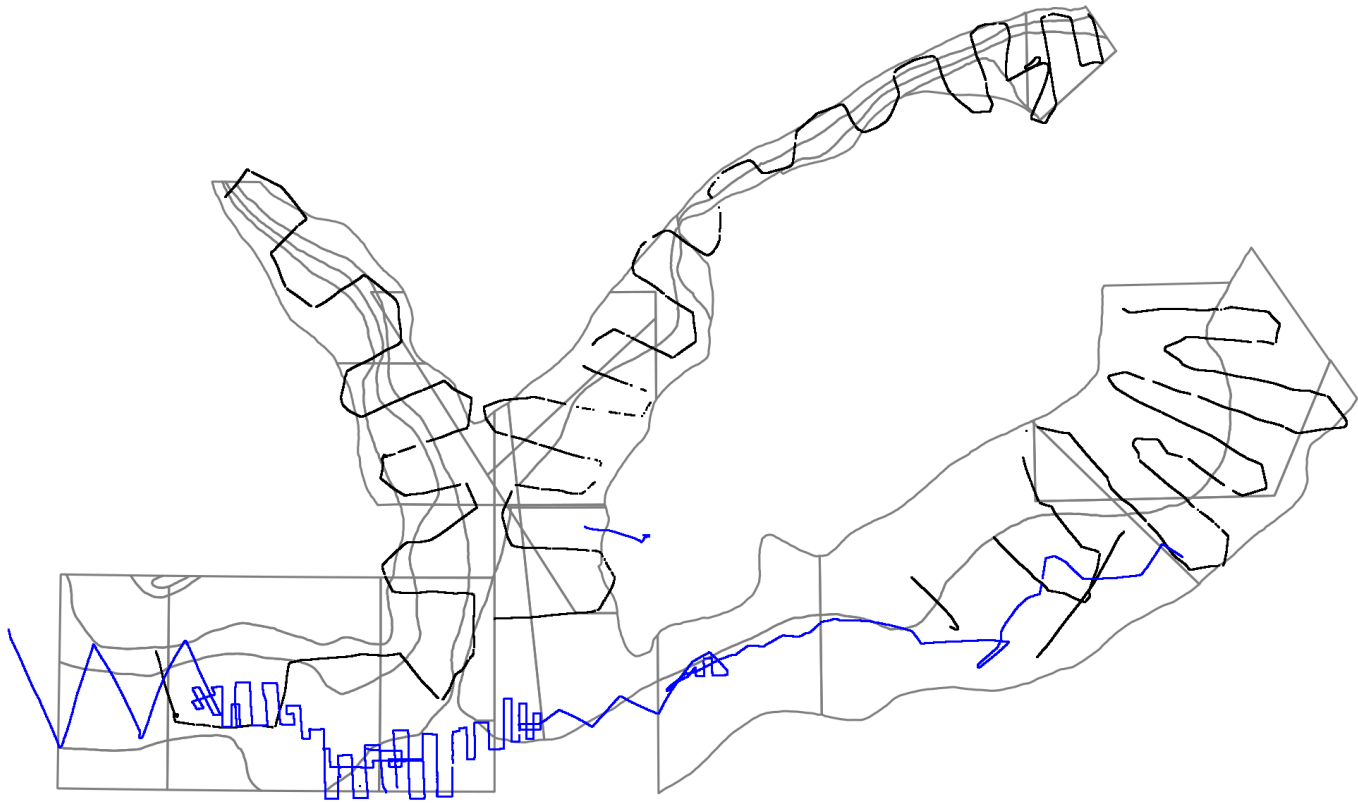


## Model-based Estimates

Area	Biomass	CV
LI north	14.3	0.035502
LI south	7.7	0.057345
NYB	5.0	0.084121
HC	18.0	0.279938
ET	36.2	0.095949
DMV	10.6	0.345819

## Stratified Mean Estimates

Area	Biomass	CV
BI	2.20	0.18
LI	22.47	0.05
NYB	10.26	0.07
HCA	12.47	0.09
ET	36.15	0.11
DMV	4.87	0.03

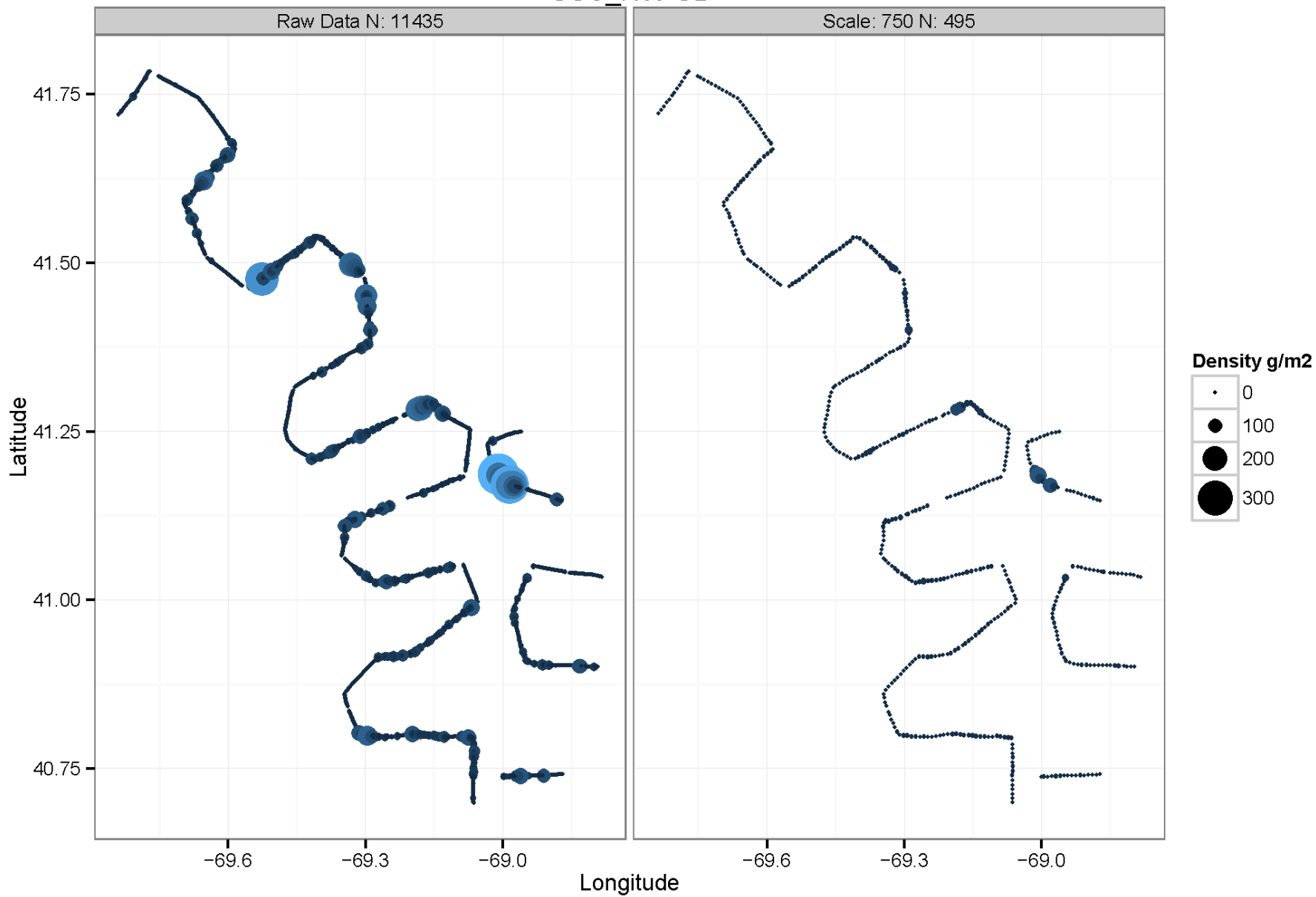




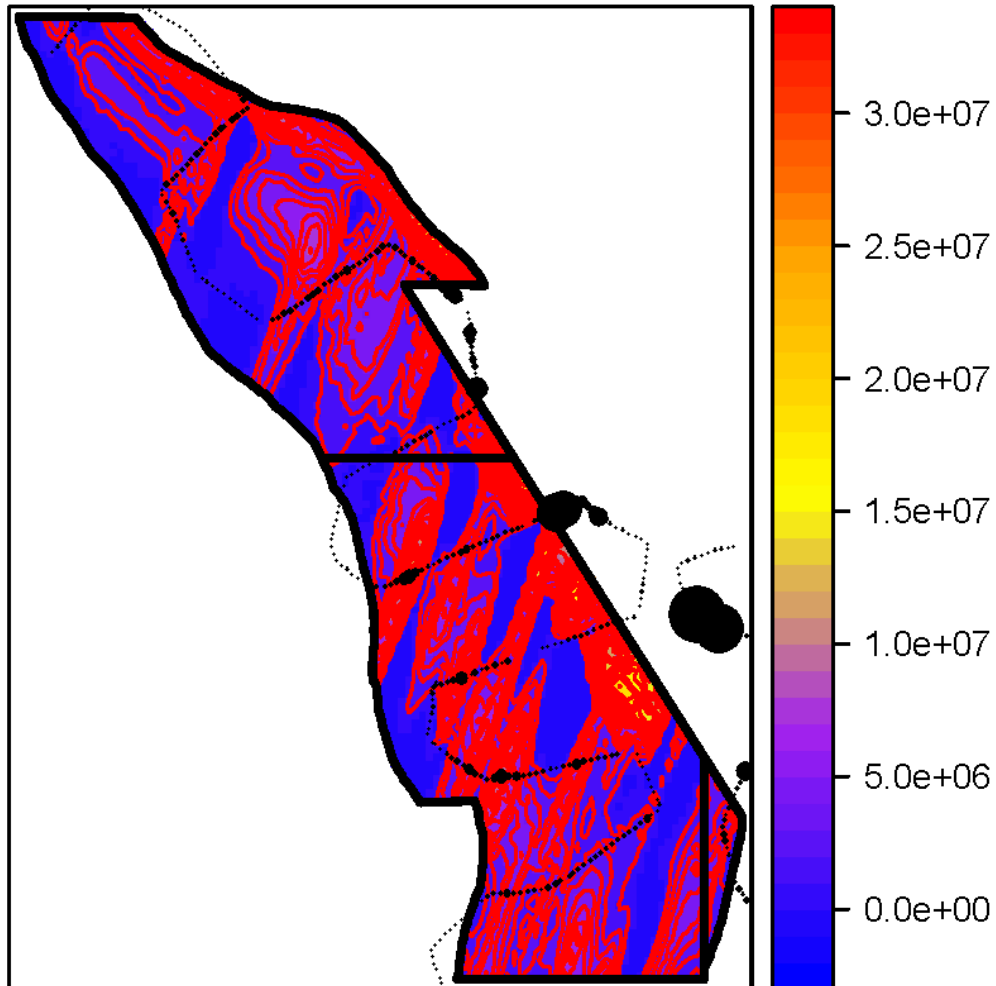
# GSC\_NW GB

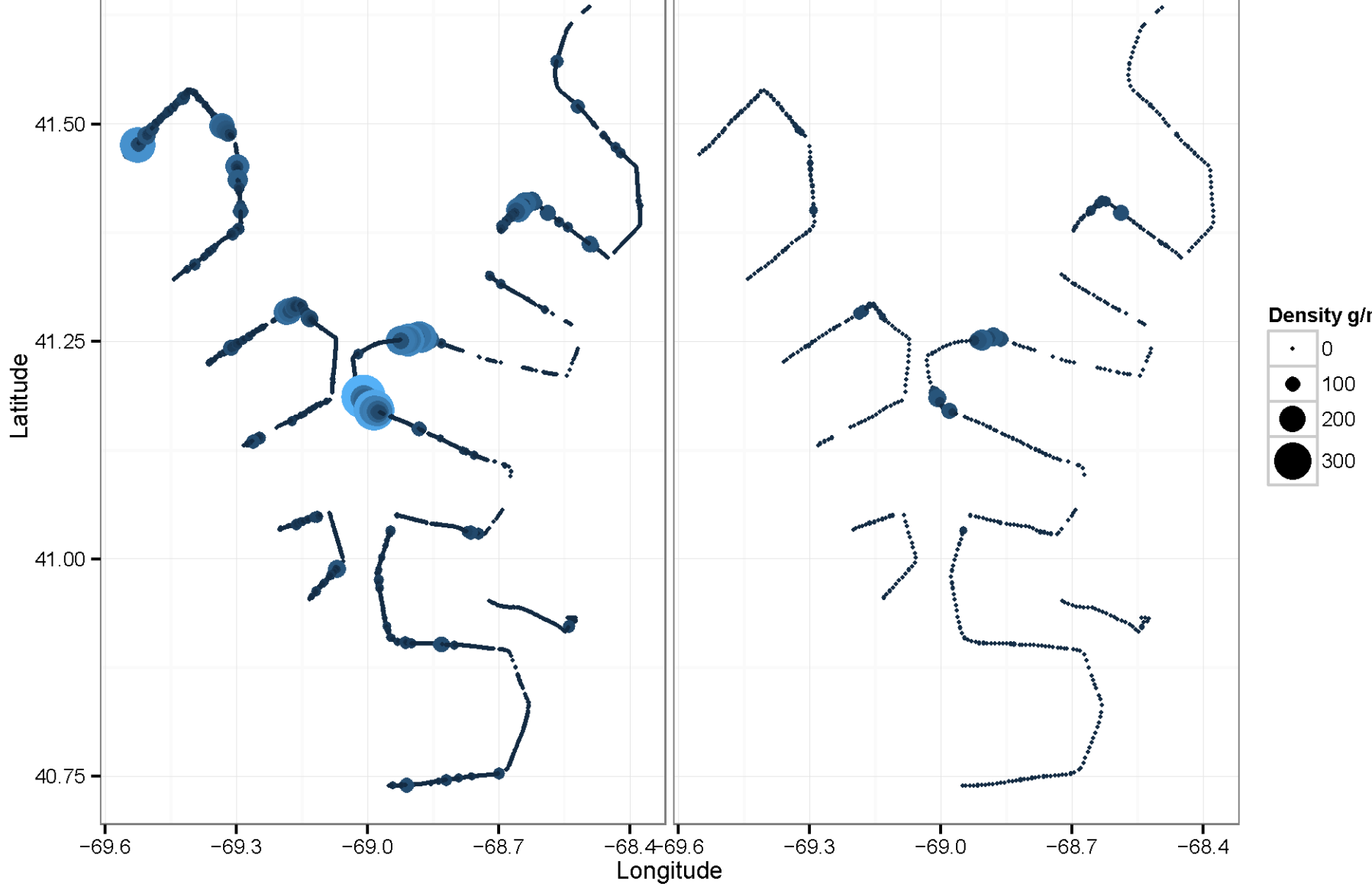
Raw Data N: 11435

Scale: 750 N: 495

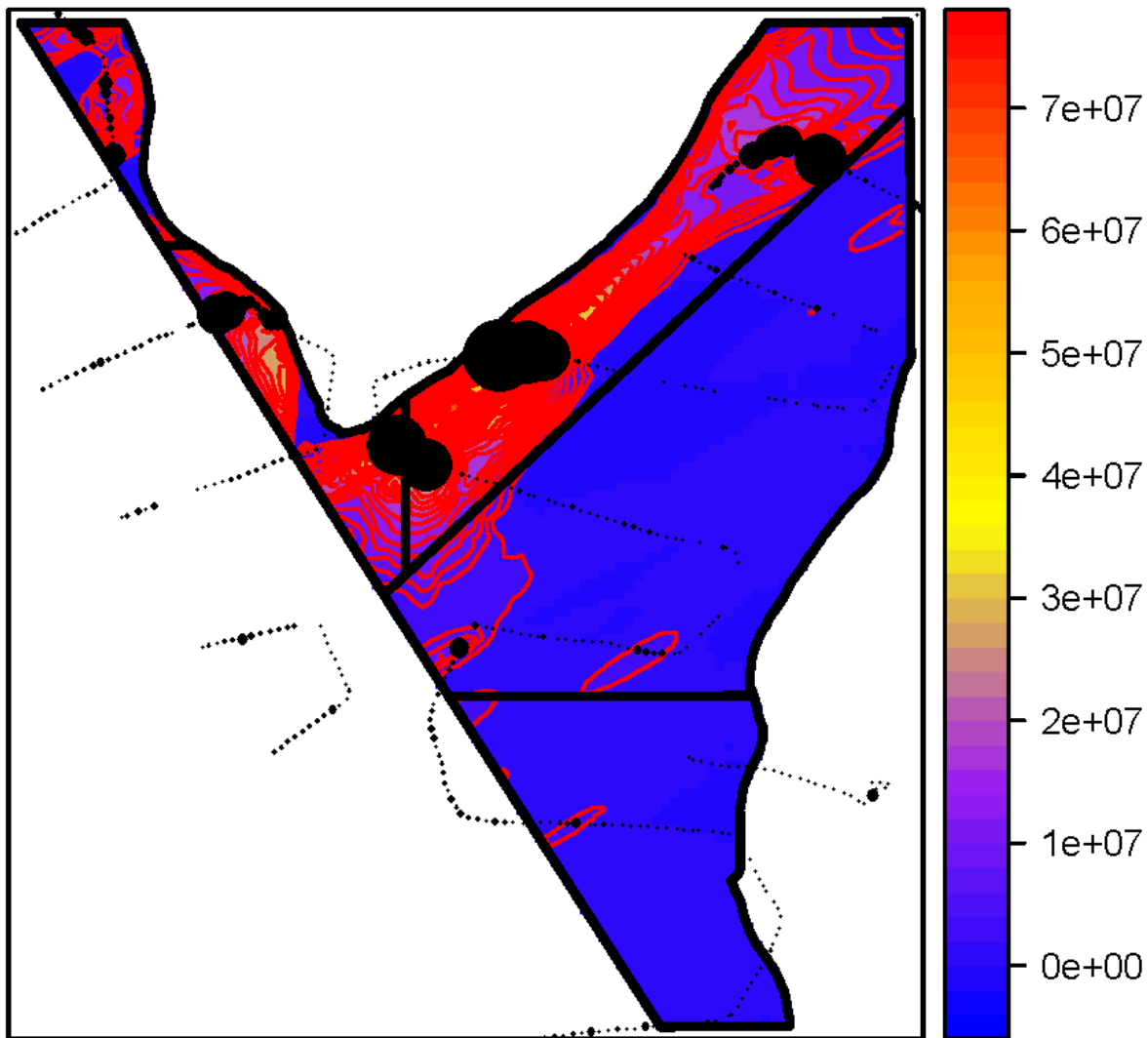


**GSC\_NW GB**  
**GAM Angle:20 Final Est Scale:750**  
**Total Est:12991.87 CV:0.09**

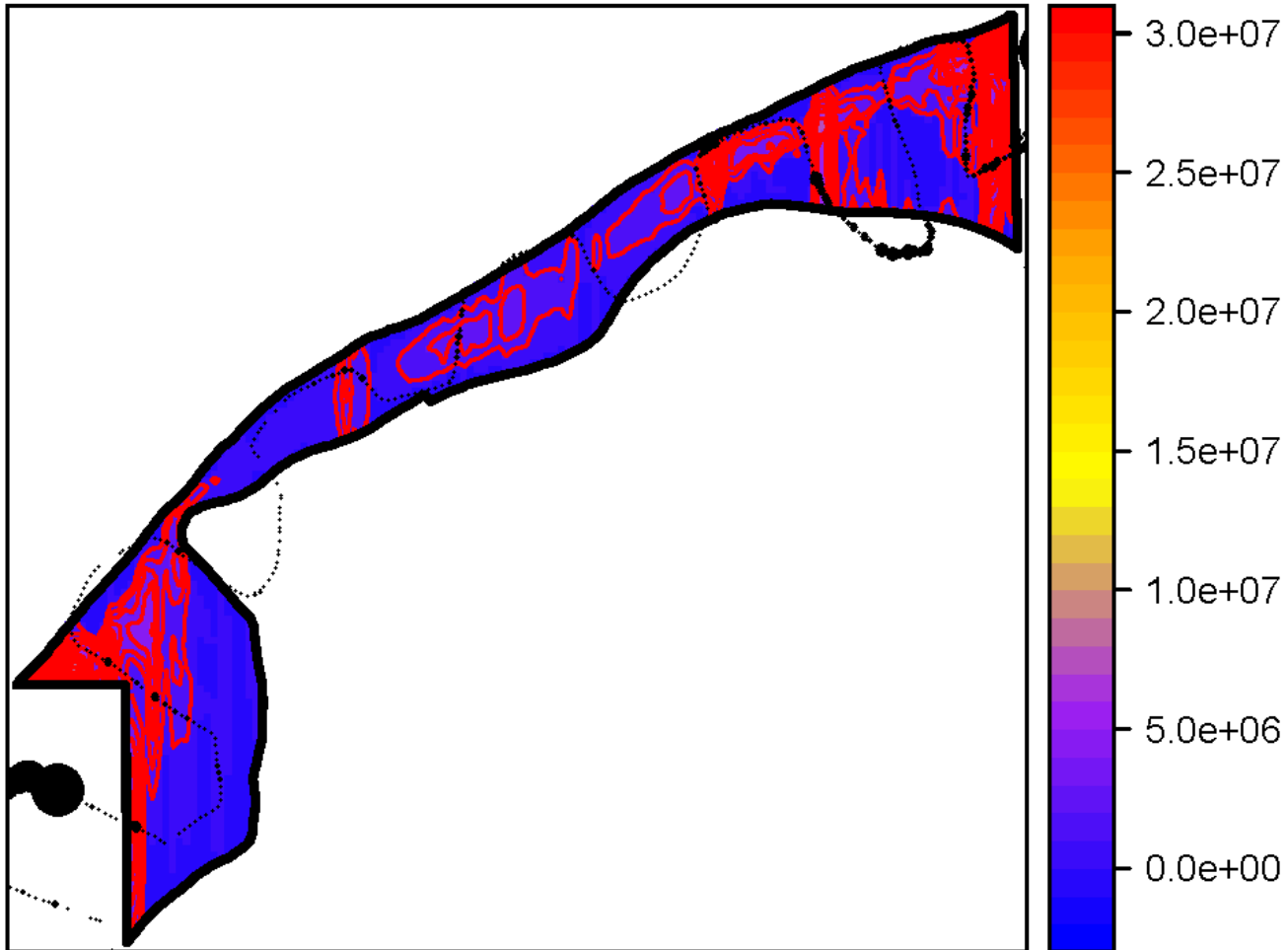




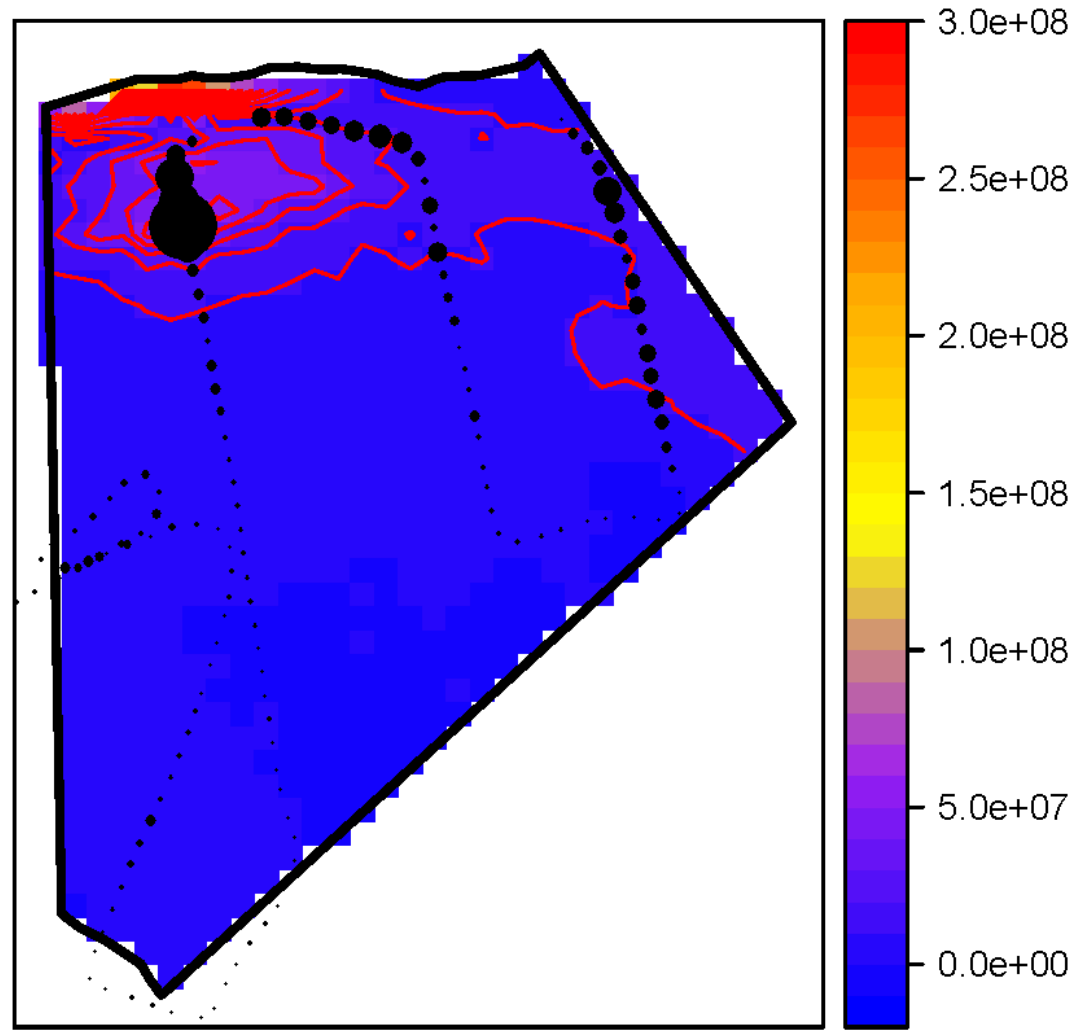
CA1 GB  
GAM Angle:60 Final Est Scale:750  
Total Est:21378.42 CV:0.28



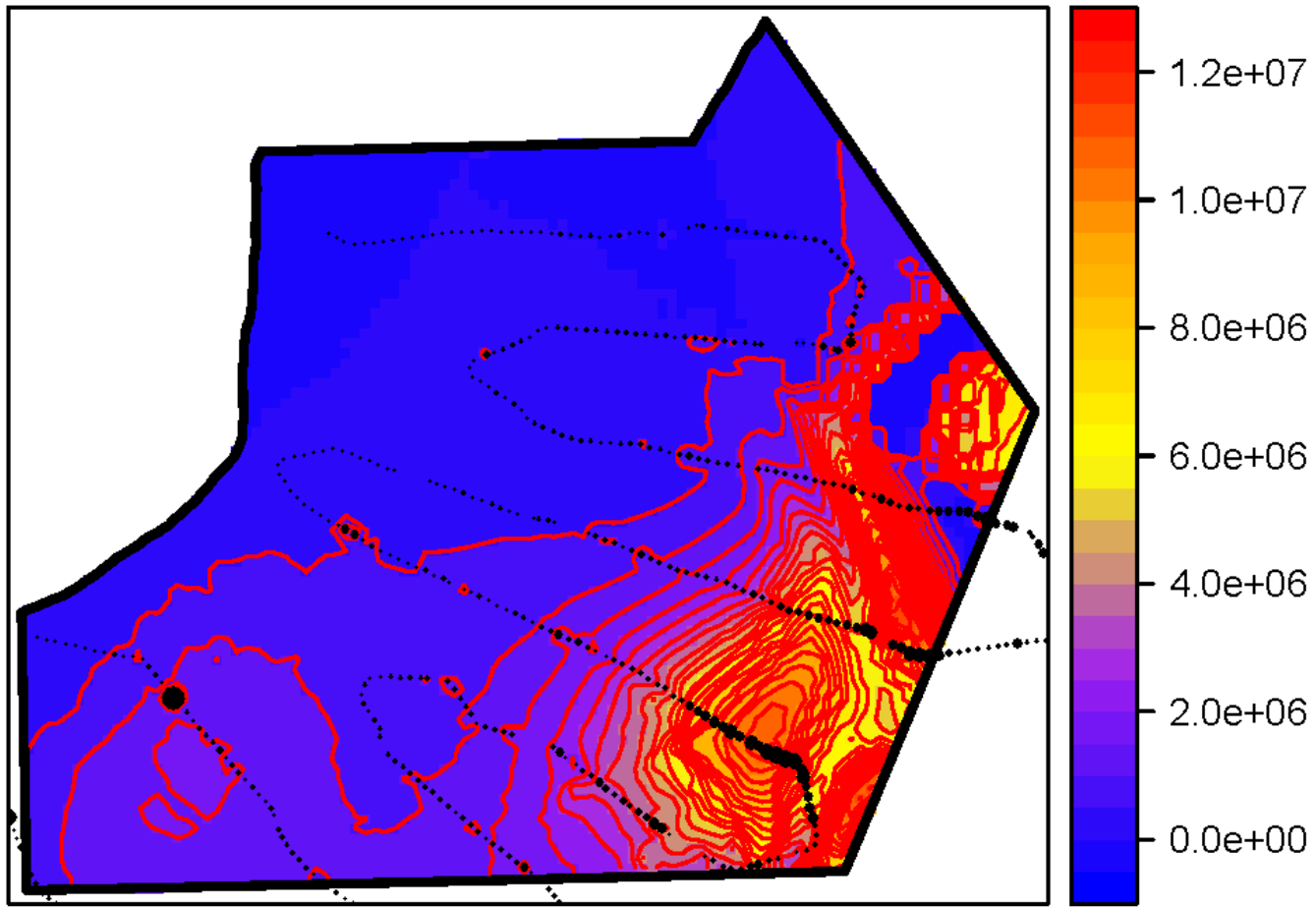
NF GB  
GAM Angle:0 Final Est Scale:750  
Total Est:4329.85 CV:0.09



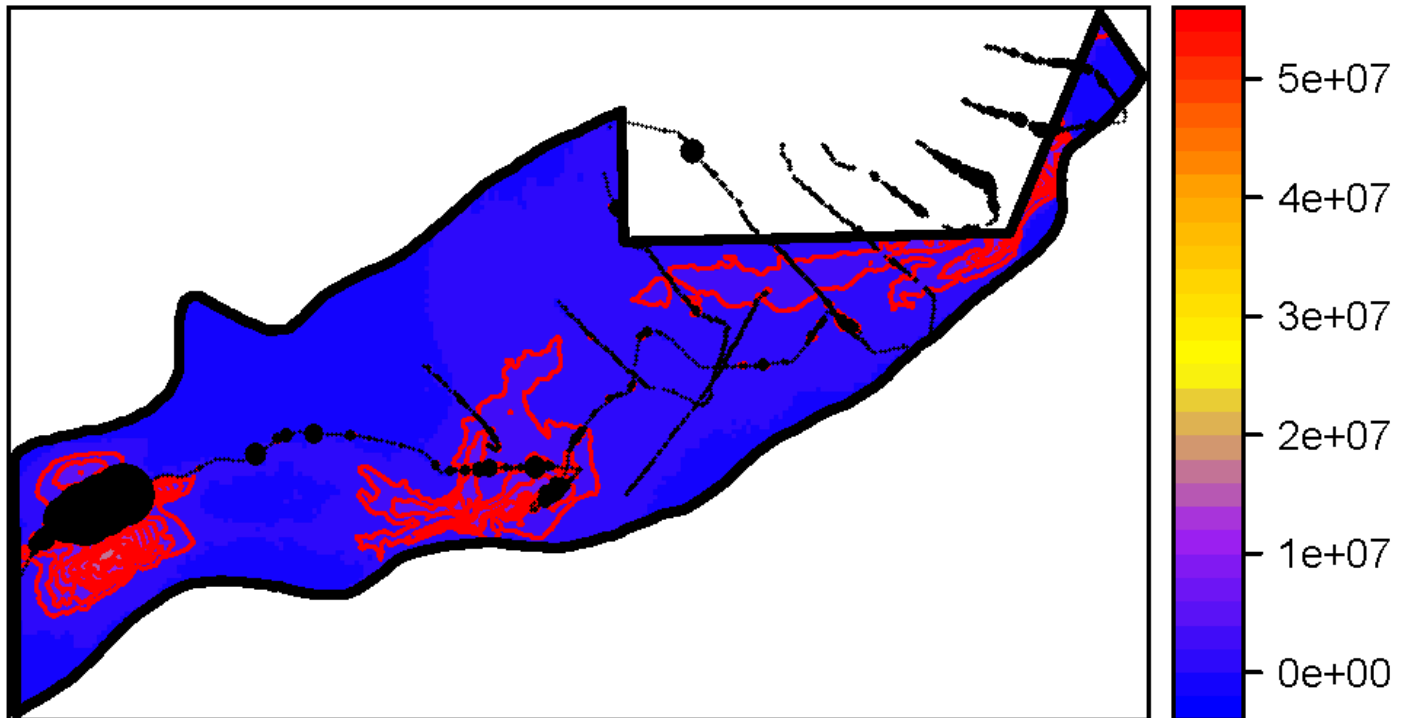
CA2\_N GB  
GAM Angle:120 Final Est Scale:750  
Total Est:7087.25 CV:0.07



CA2\_S GB  
GAM No Angle Final Est Scale:750  
Total Est:9834.84 CV:0.01

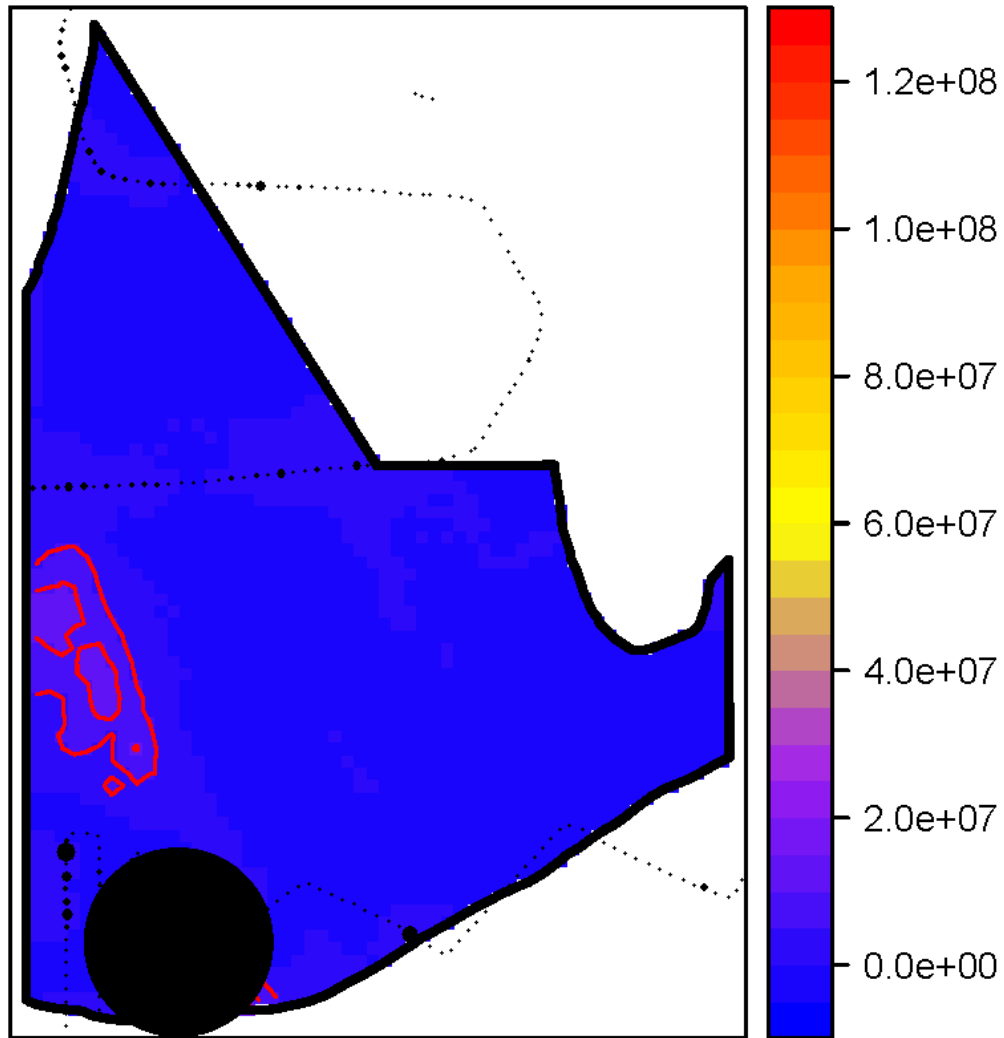


**SF GB**  
**GAM Angle:80 Final Est Scale:750**  
**Total Est:16038.25 CV:0.08**

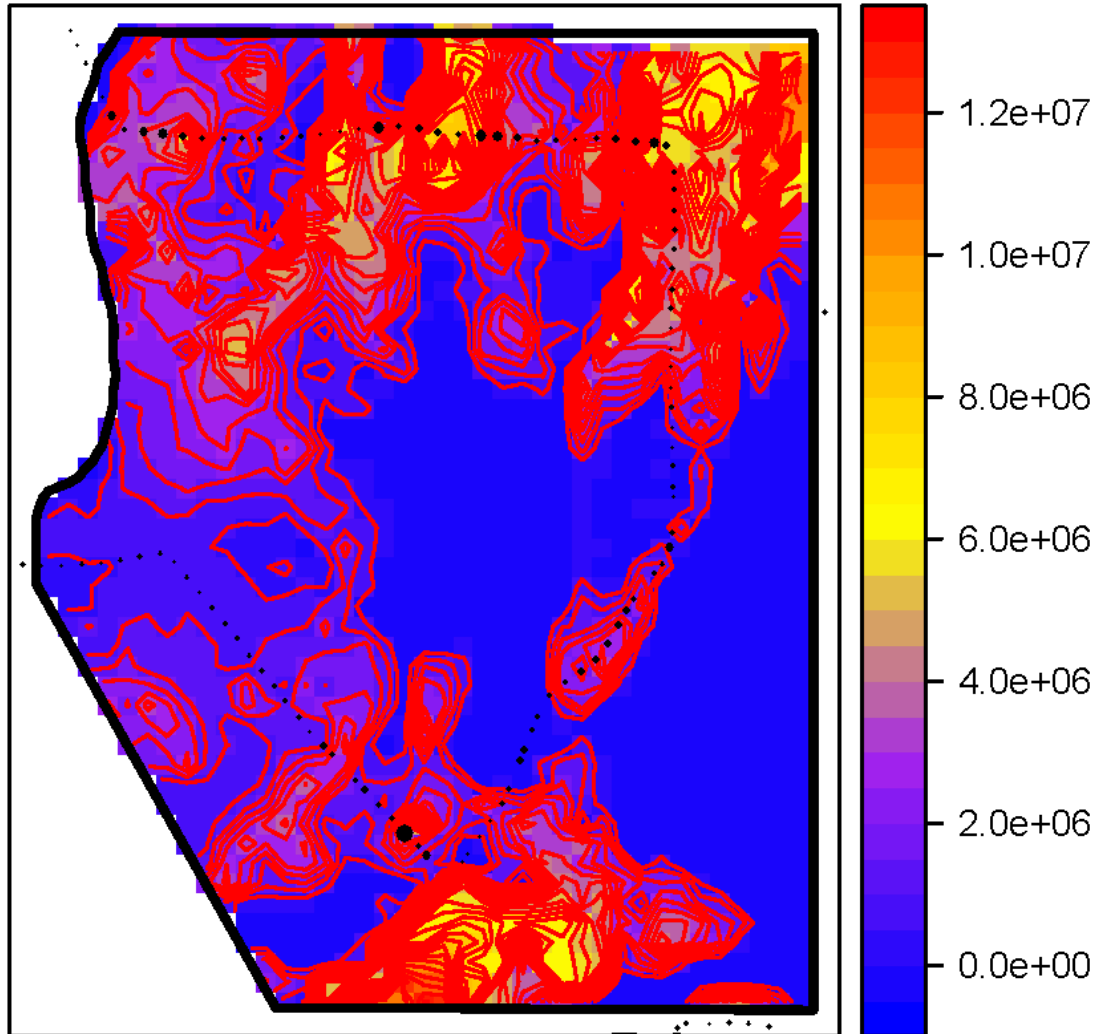




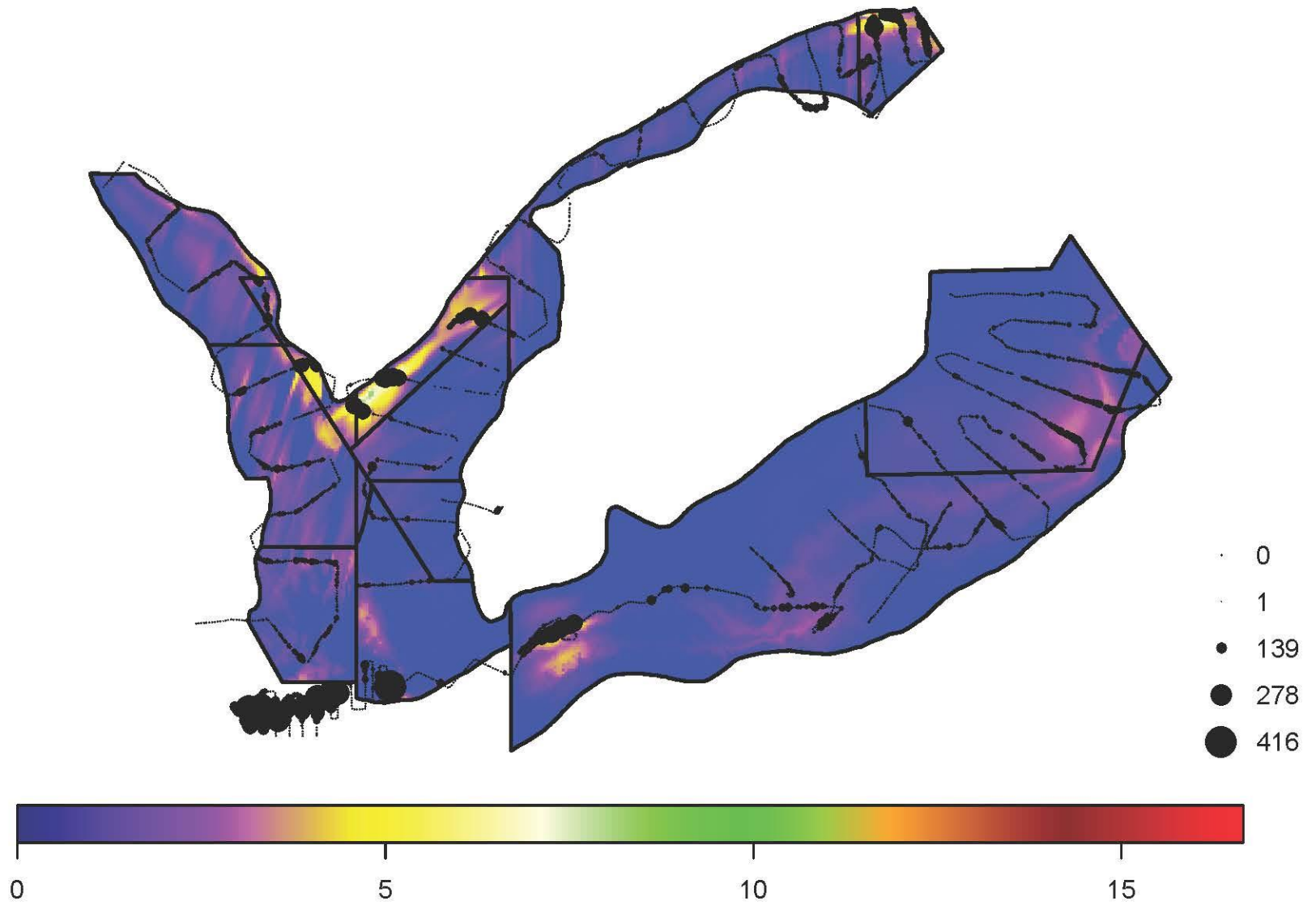
**GSC\_SE GB**  
**GAM Angle:80 Final Est Scale:750**  
**Total Est:3001.84 CV:1.58**

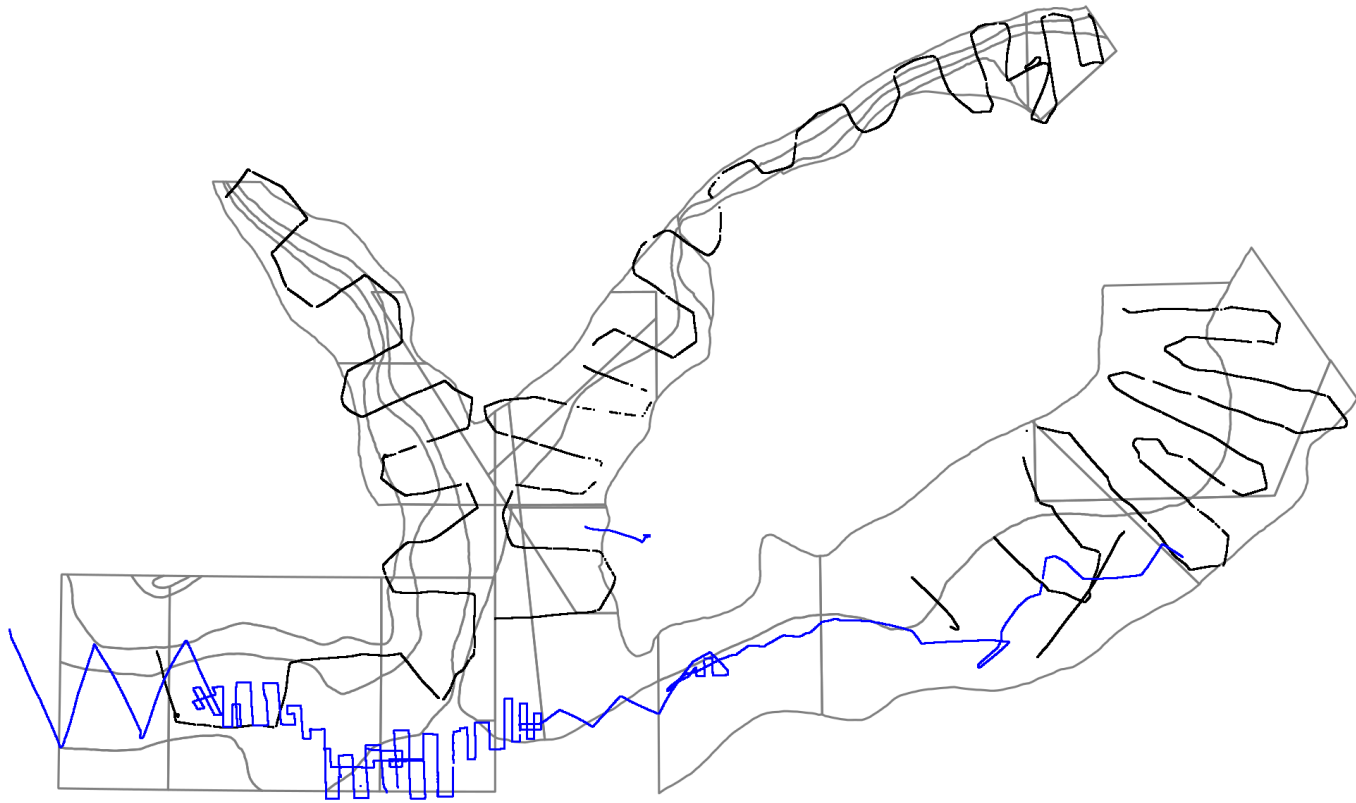


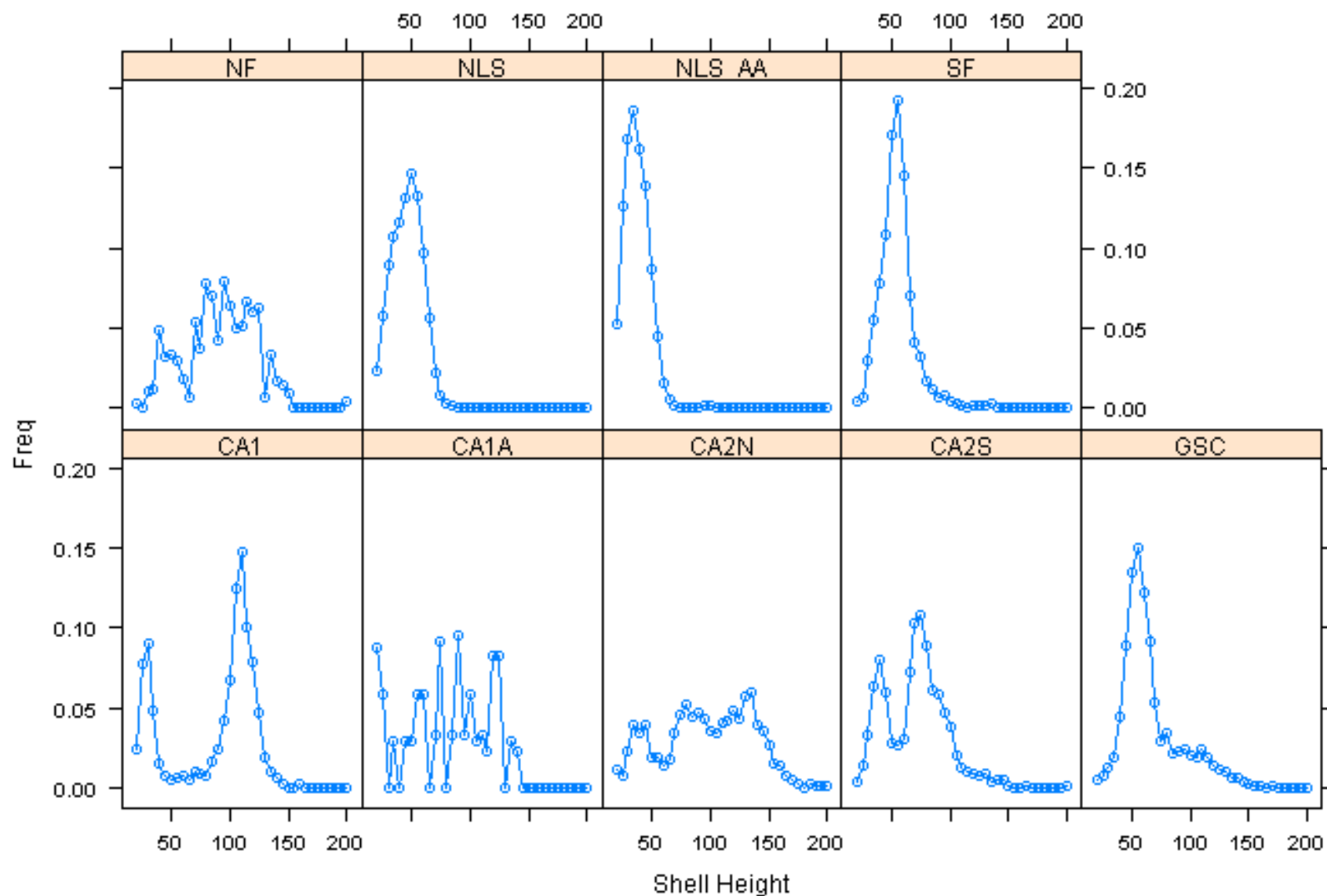
**NLS GB**  
**GAM Angle:60 Final Est Scale:750**  
**Total Est:3231.46 CV:1.64**

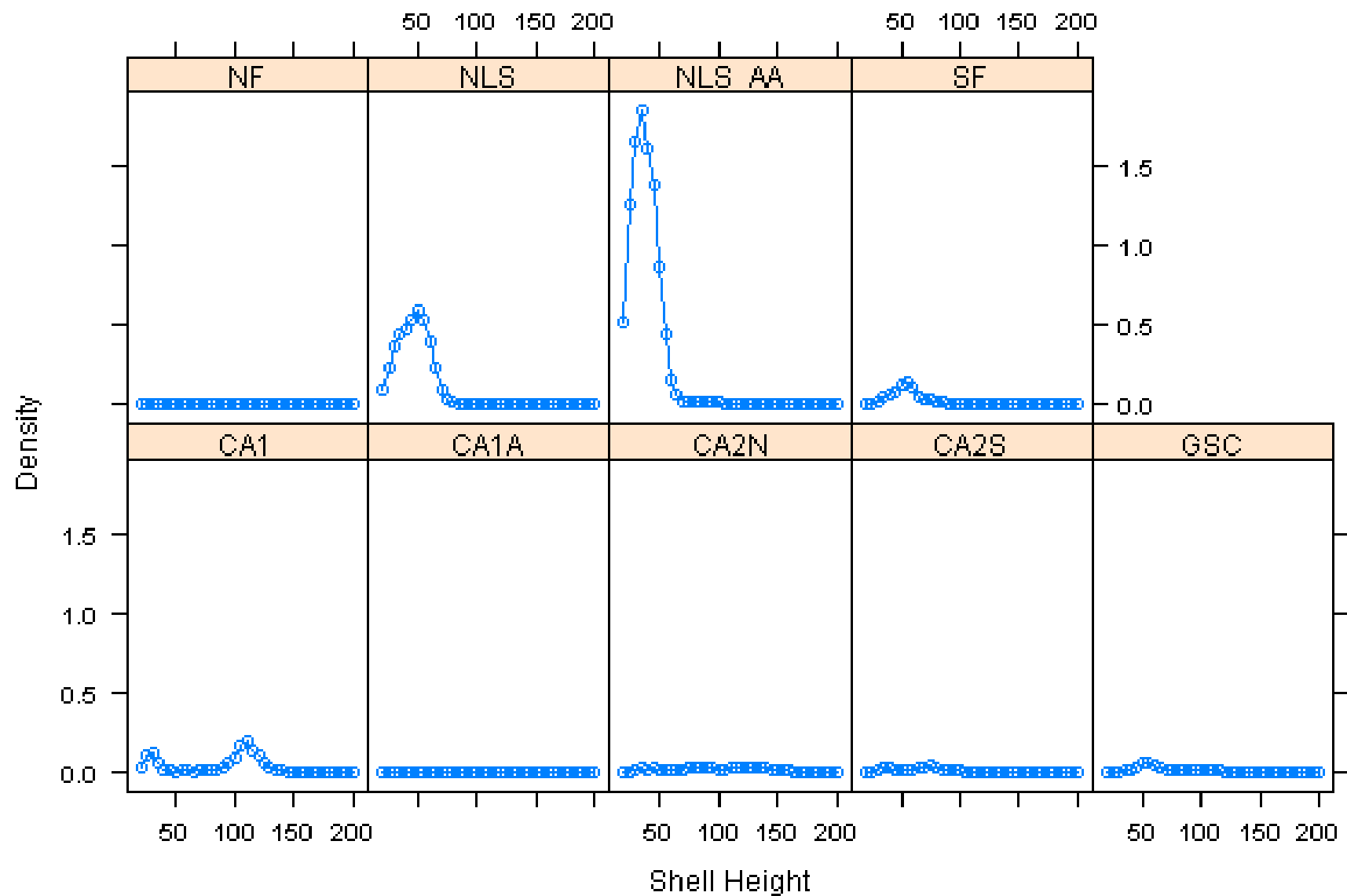


Prediction Unit: mt per 750 m<sup>2</sup>  
Observation Unit: g per m<sup>2</sup>









## Model-Based Estimates

Area	Biomass	CV
CA1	21.4	0.28
CA2_N	7.1	0.07
CA2_S	9.8	0.01
GSC_NW	13.0	0.09
GSC_SE	3.0	1.58
NF	4.3	0.09
NLS_AA	3.2	1.64
SF	16.0	0.08

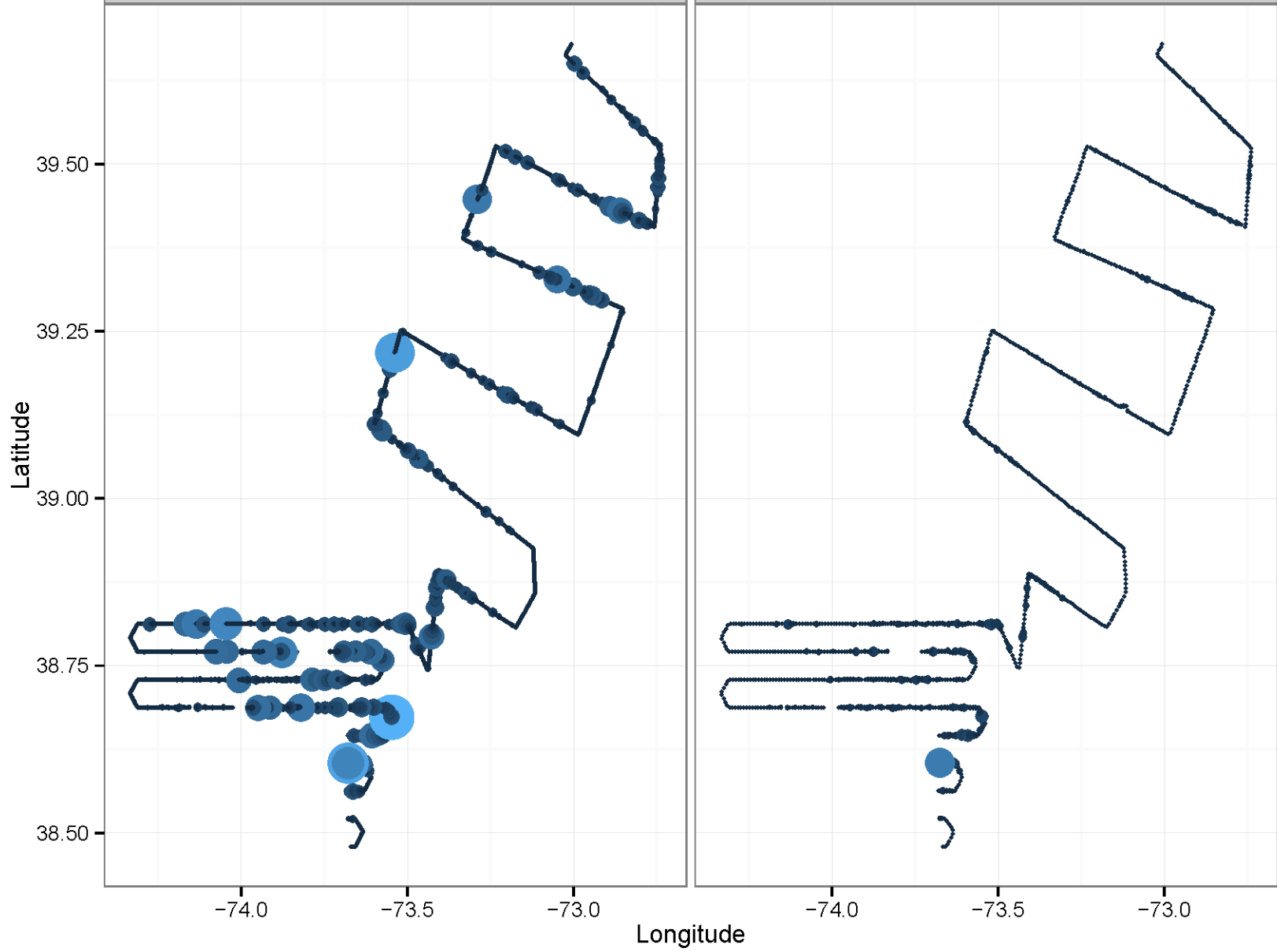
## Stratified Mean Estimates

Zone	Biomass	CV
CA1	21.44	1.33
CA1A	1.18	0.16
CA2N	6.19	0.74
CA2S	11.50	0.07
GSC	17.56	0.18
NF	3.05	0.14
NLS	69.02	0.21
NLS_AA	34.06	0.37
SF	32.25	0.11

# HC MAB

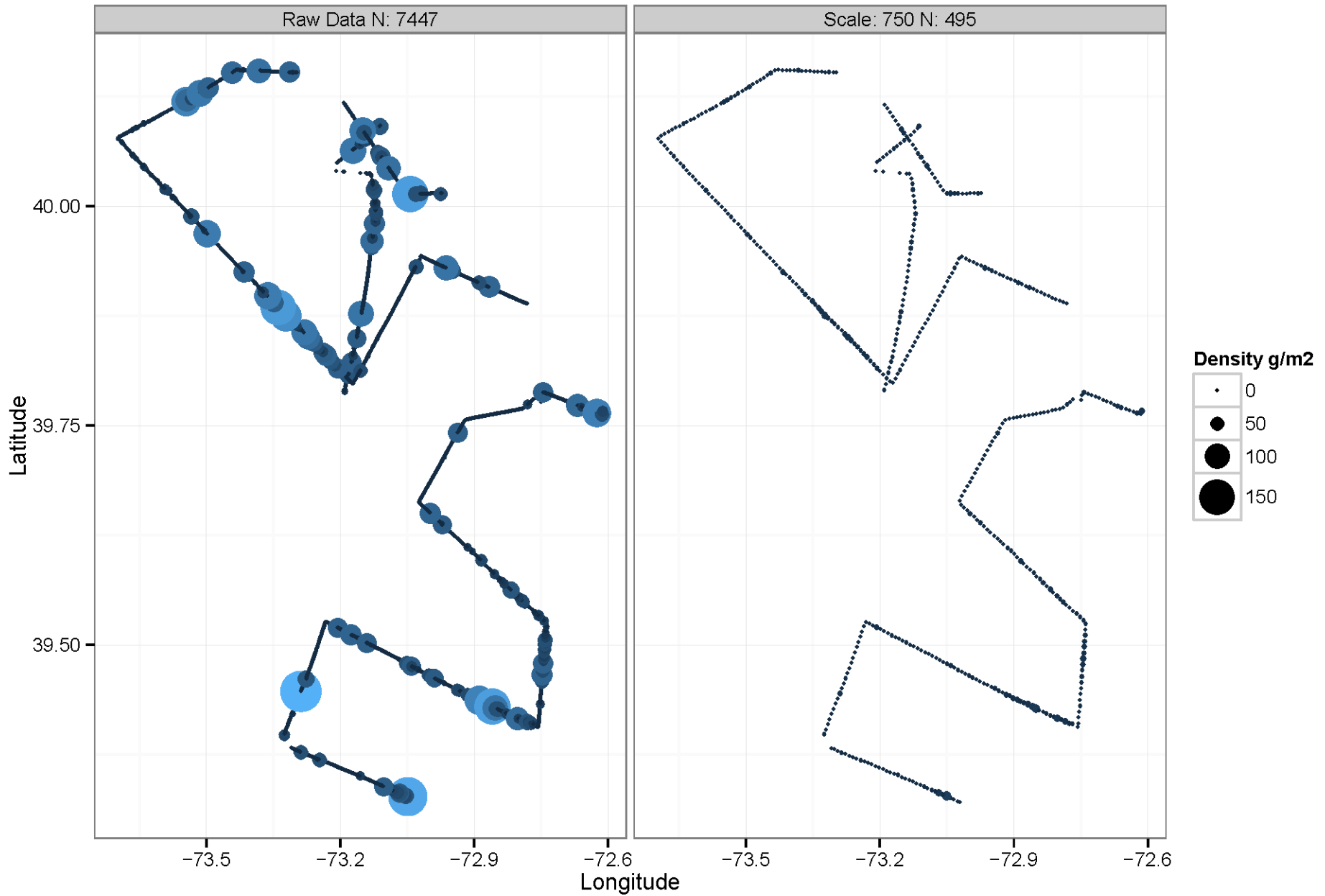
Raw Data N: 9930

Scale: 750 N: 878





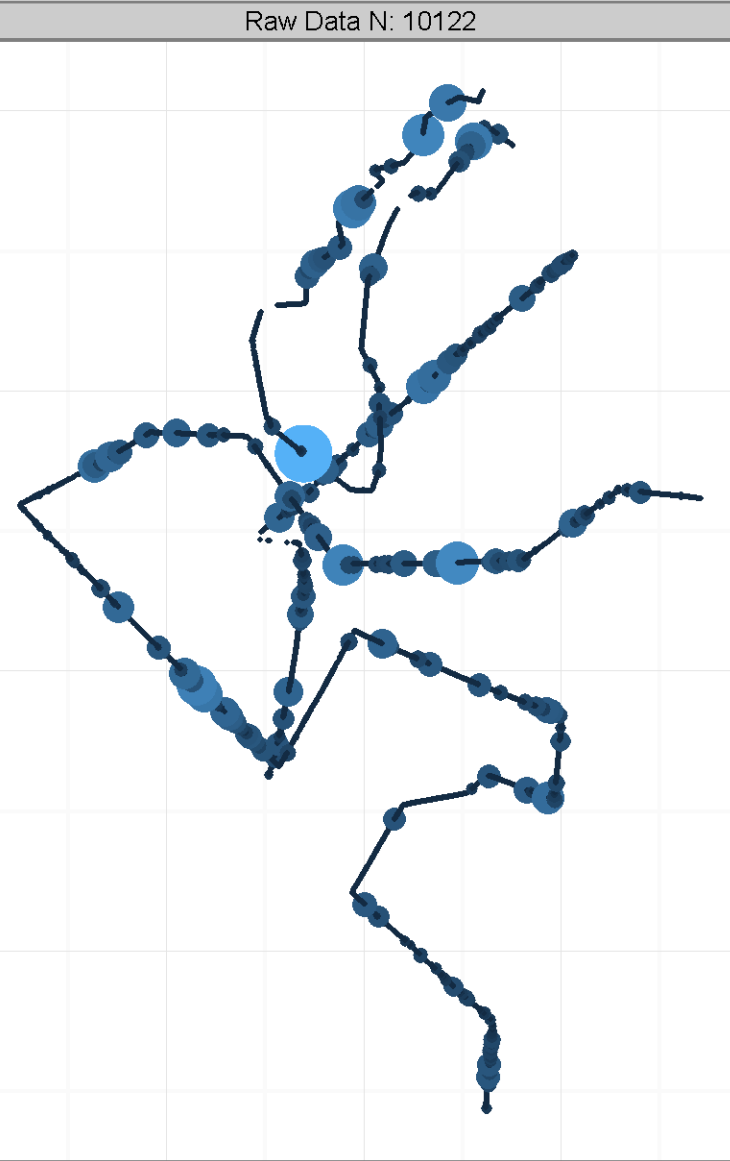
# HCSR MAB



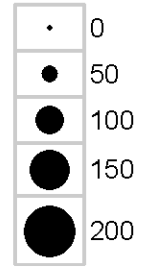
# HCnr MAB

Raw Data N: 10122

Scale: 750 N: 760



Density g/m<sup>2</sup>



-73.4

-73.0

-72.6

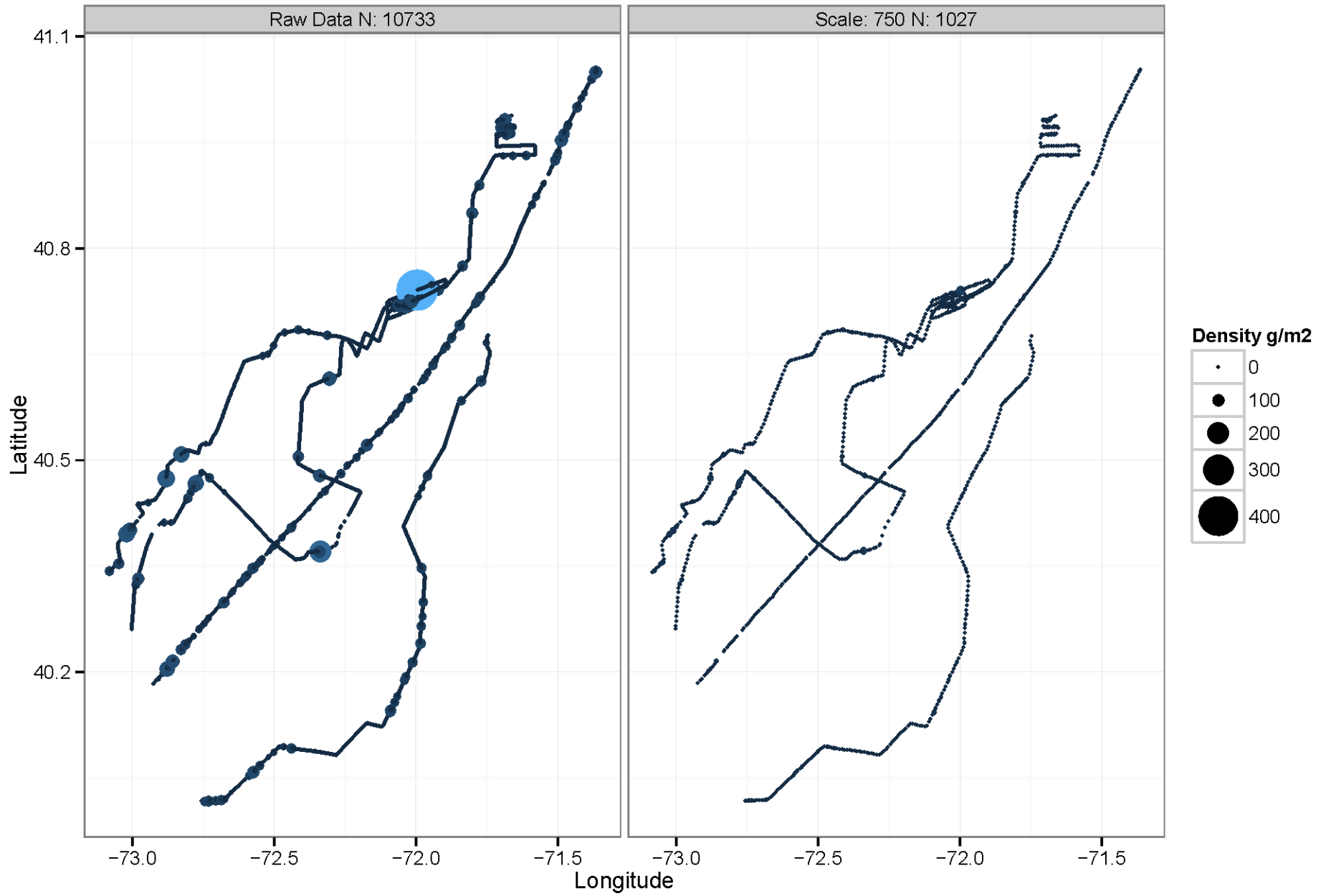
Longitude

-73.4

-73.0

-72.6

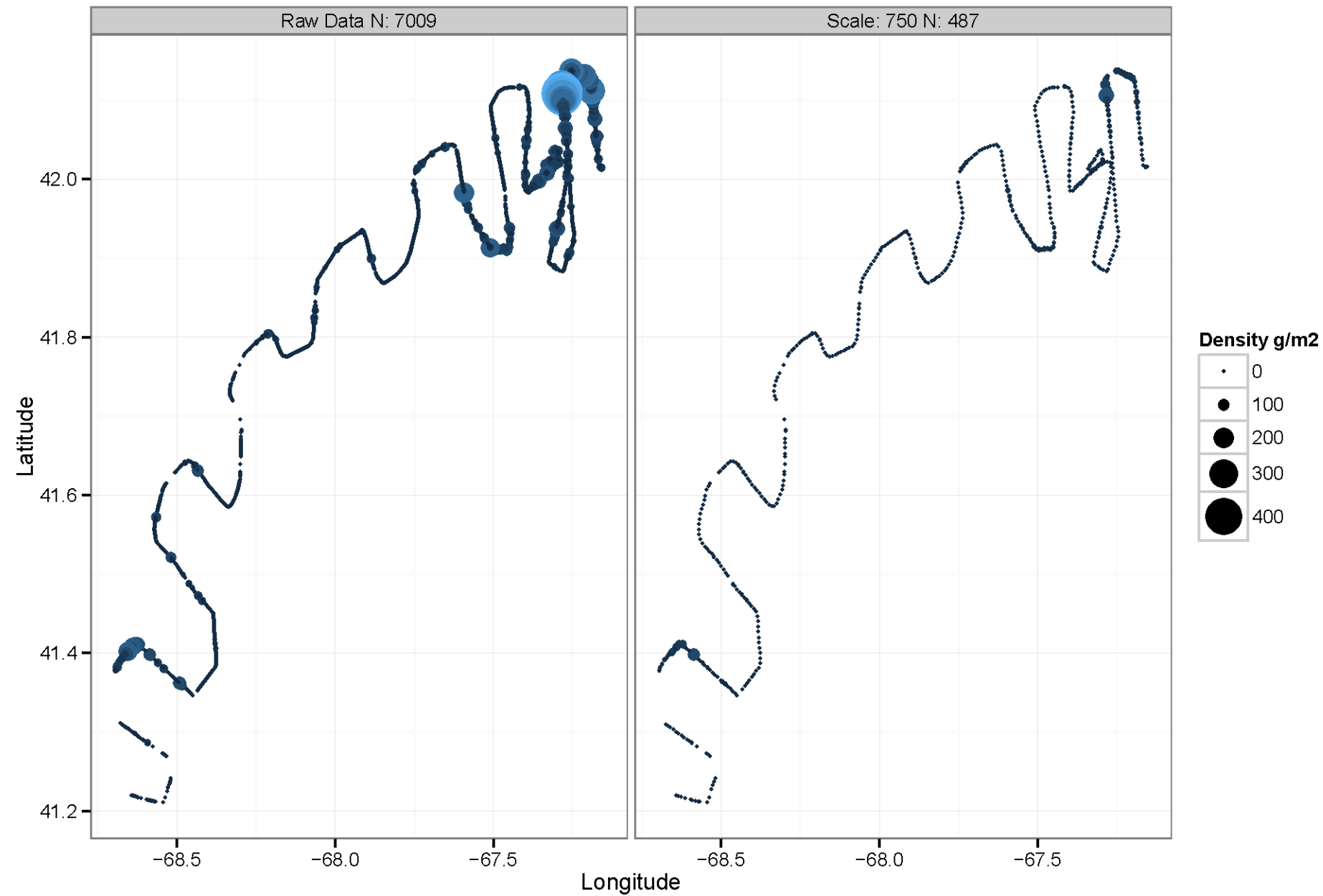
# LI MAB



# NF GB

Raw Data N: 7009

Scale: 750 N: 487



# CA2\_N GB

Raw Data N: 4328

Scale: 750 N: 211

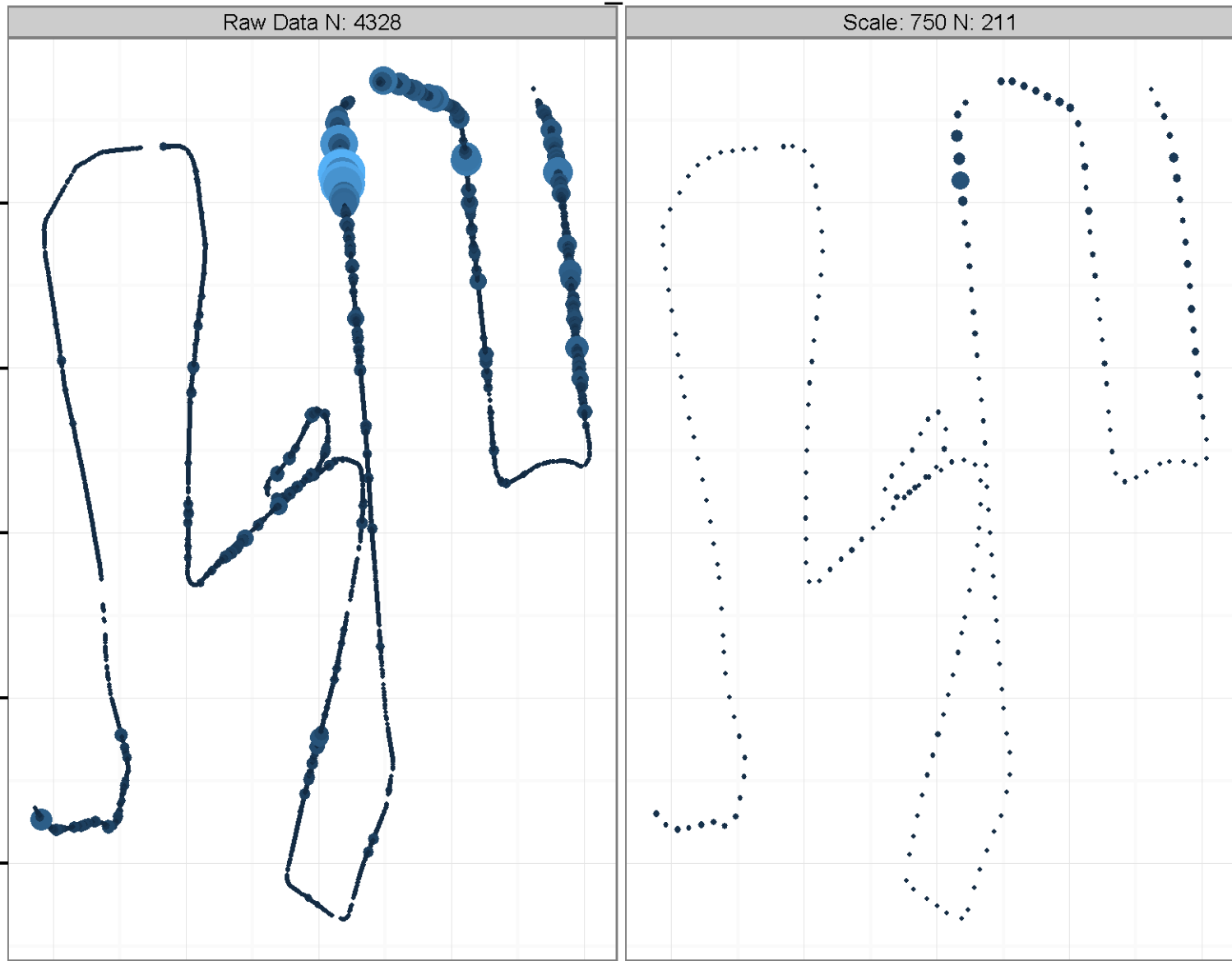
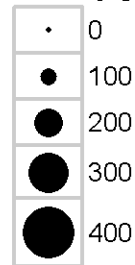
Latitude

42.10  
42.05  
42.00  
41.95  
41.90

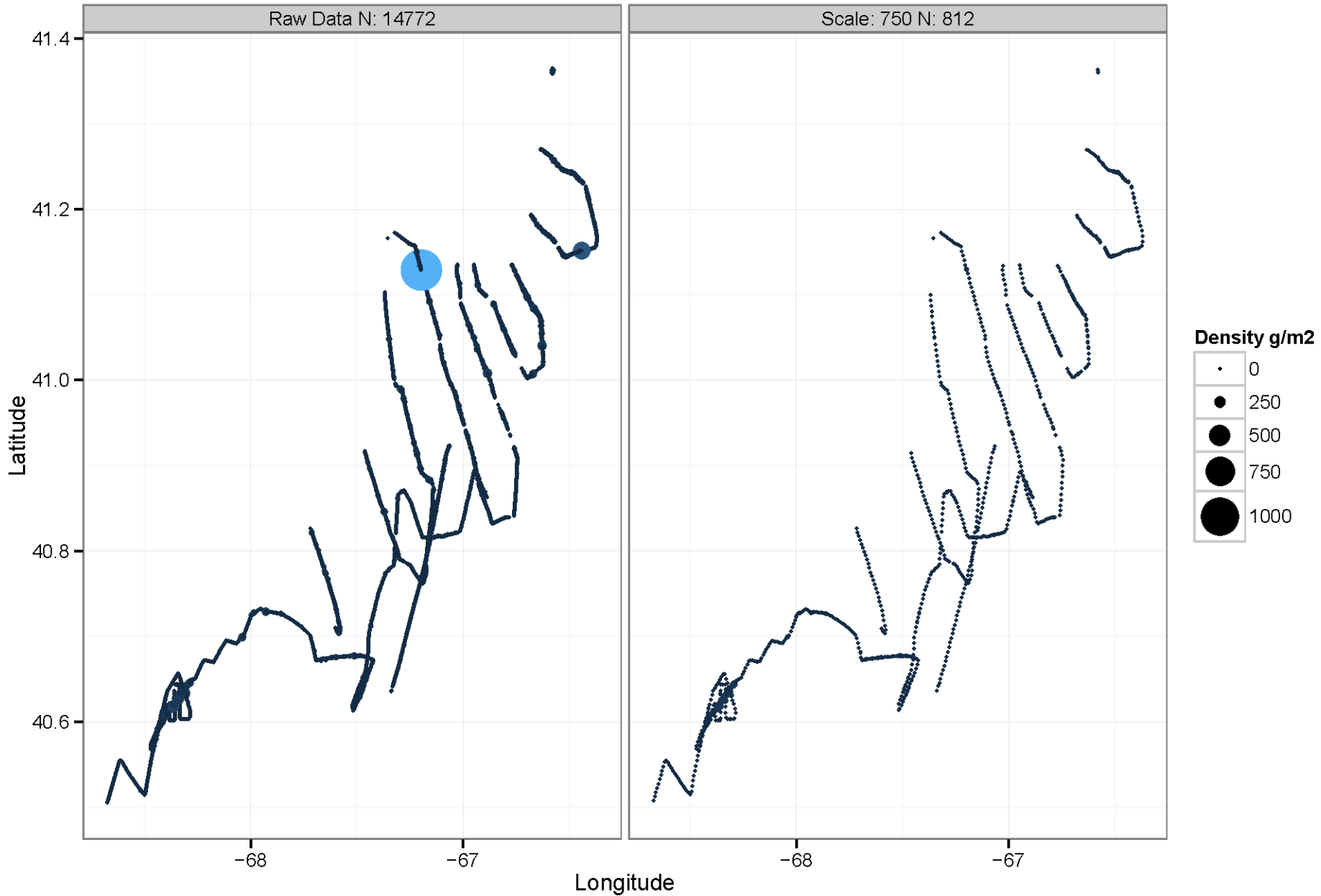
Longitude

-67.5 -67.4 -67.3 -67.2 -67.1 -67.5 -67.4 -67.3 -67.2 -67.1

Density g/m2



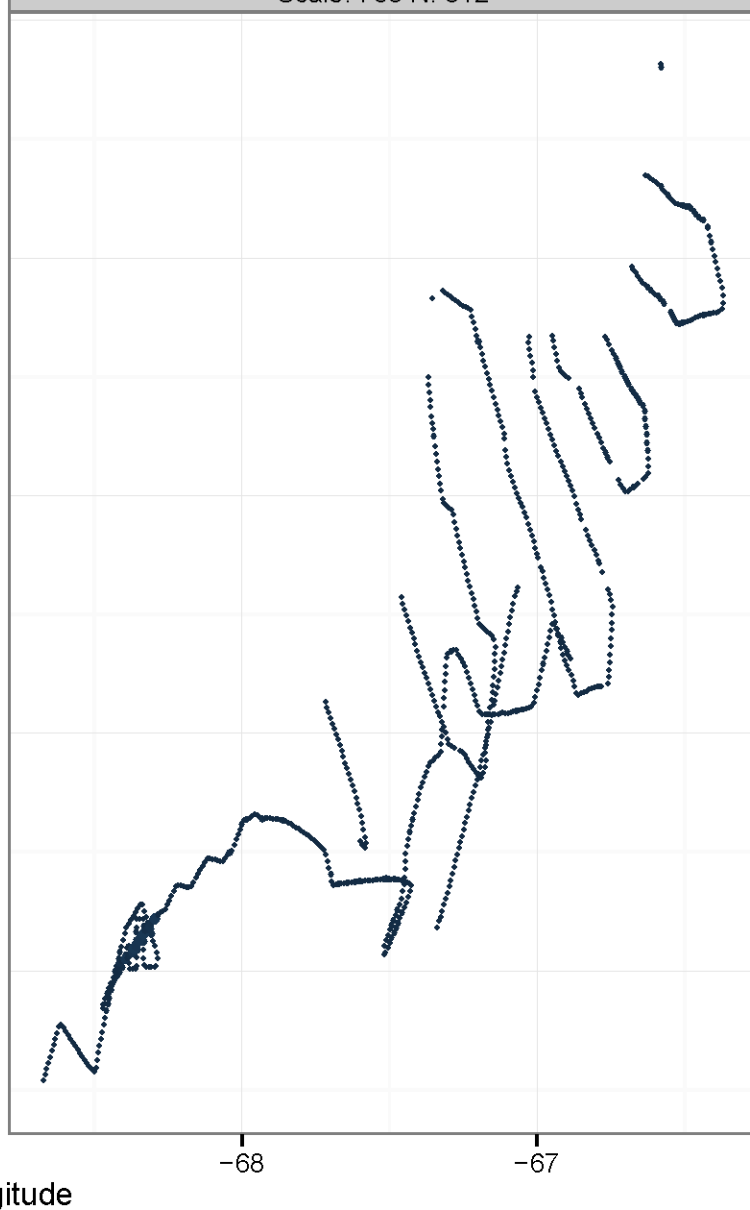
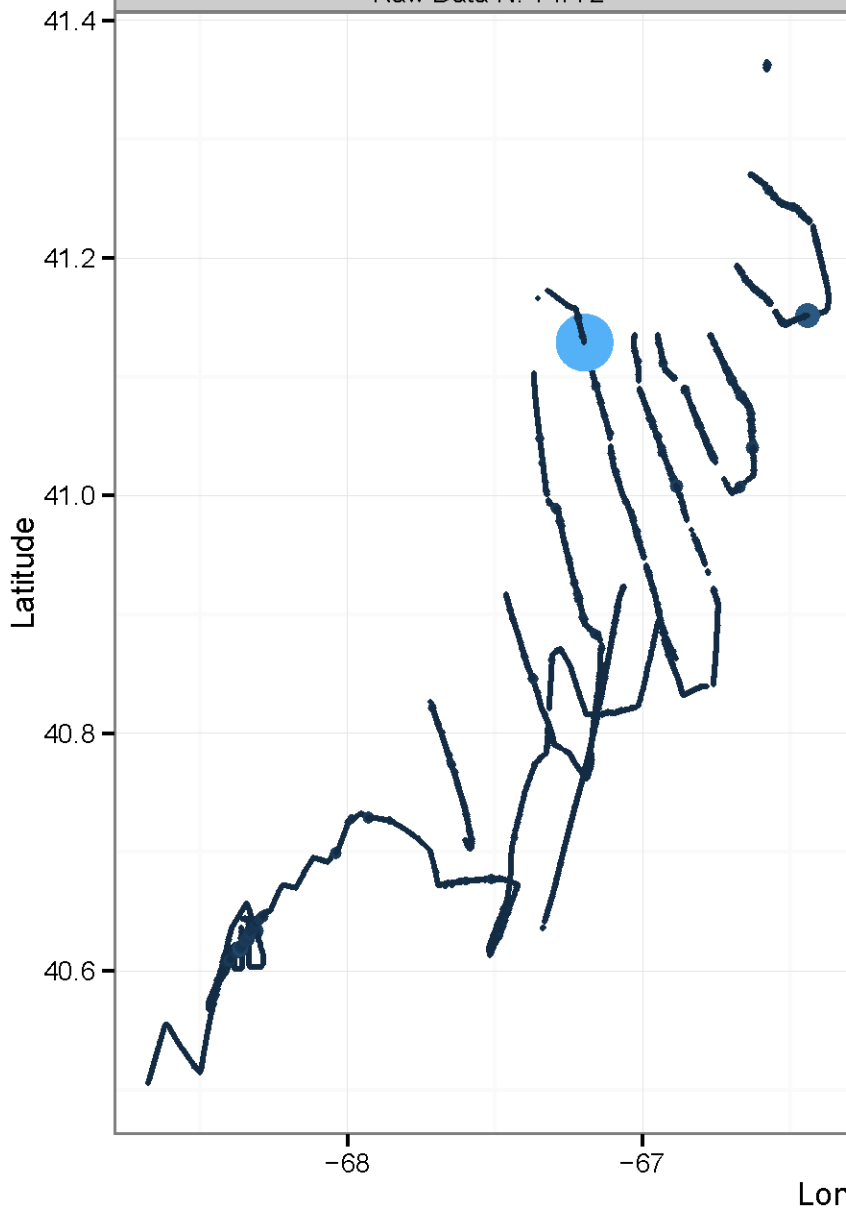
# SF GB



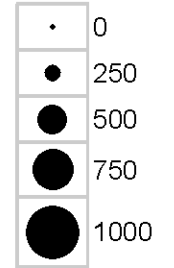
# SF GB

Raw Data N: 14772

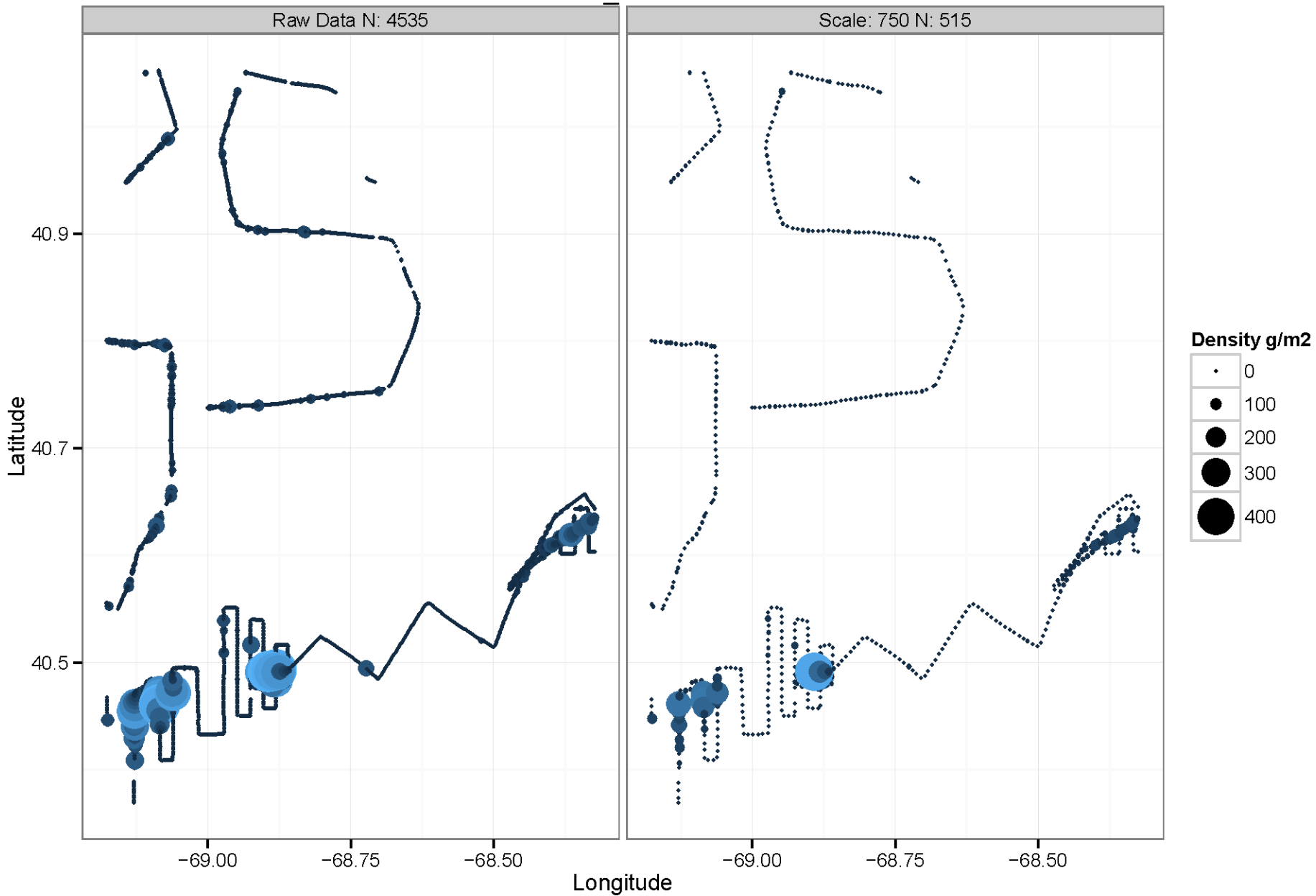
Scale: 750 N: 812



Density g/m<sup>2</sup>



# GSC\_SE GB





# NLS GB

