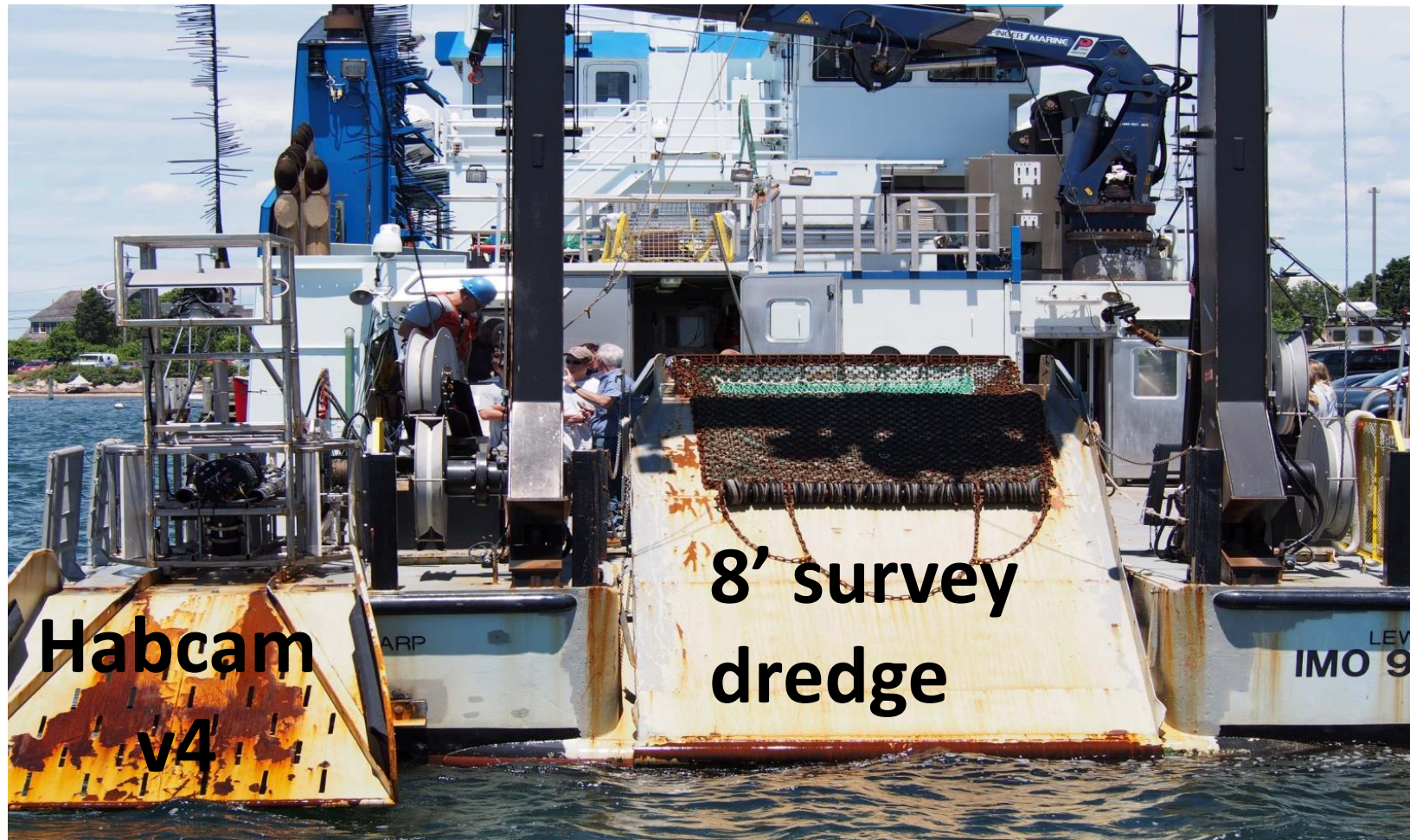


2014 NEFSC Sea Scallop Survey

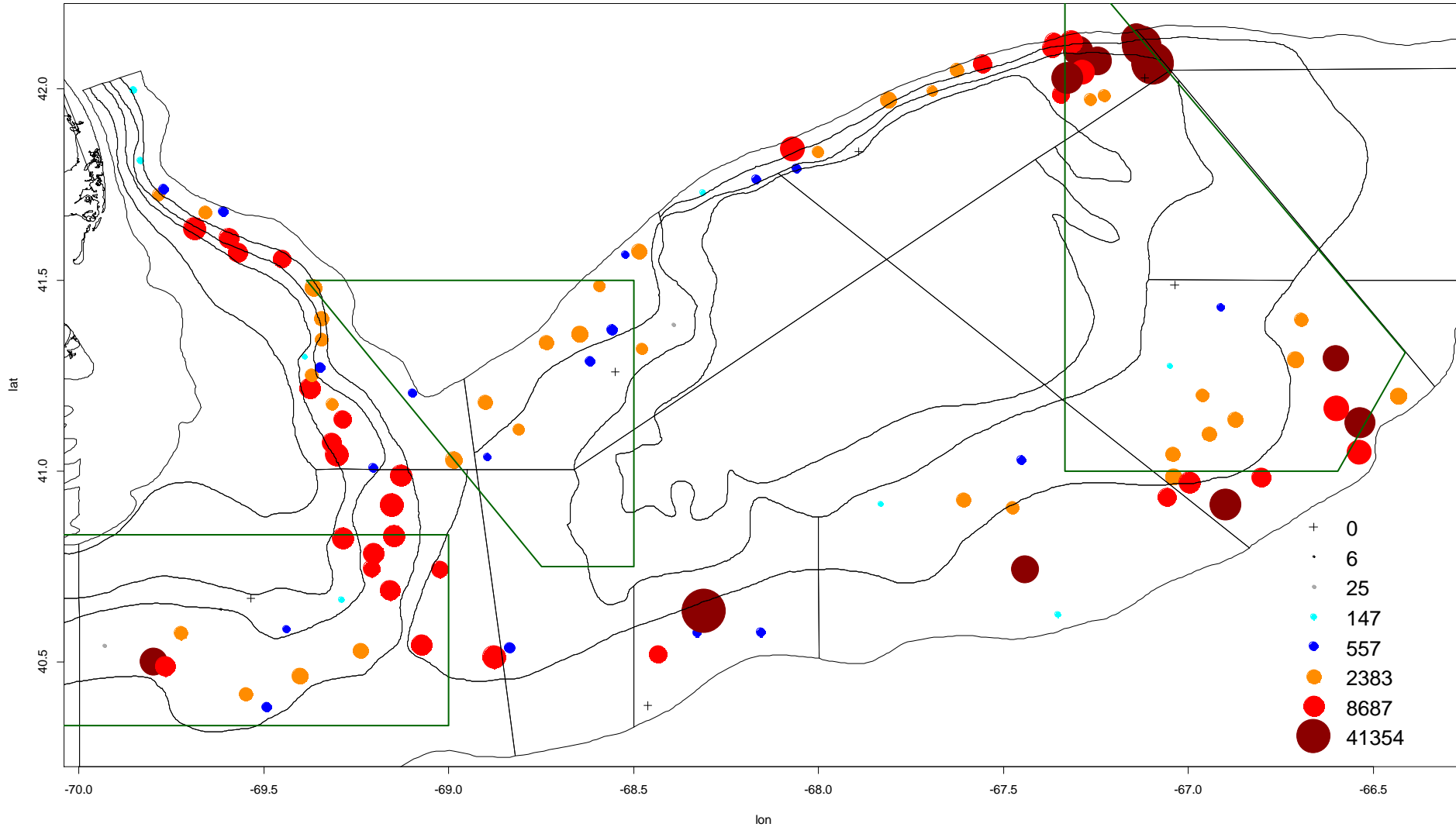


Conducted combined dredge/HabCam survey similar to that in 2012 and 2013. Full Habcam survey of both regions but almost no NEFSC dredge tows in Mid-Atlantic (but covered extensively by VIMS).



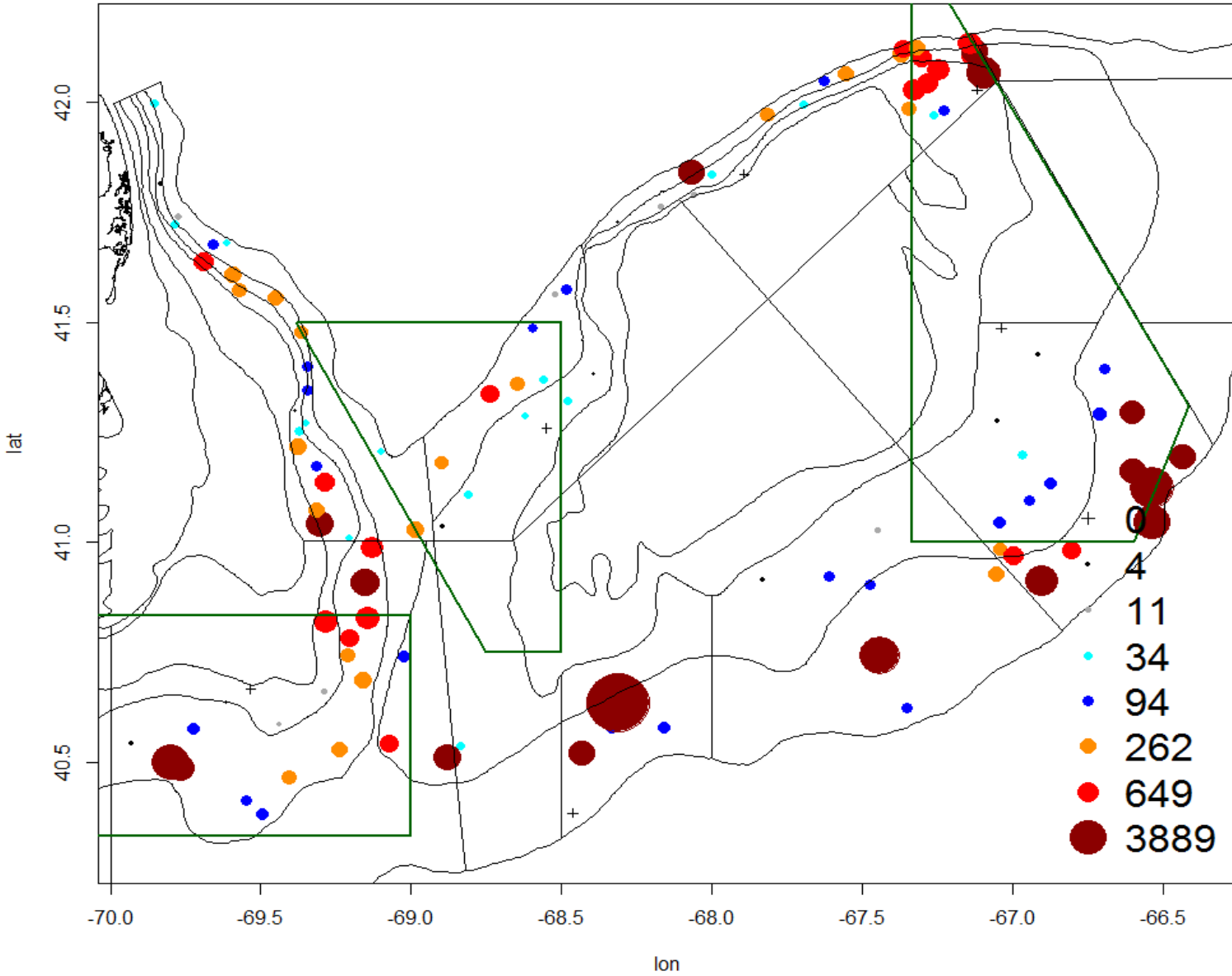
Georges Bank dredge survey biomass chart

Georges Bank Biomass



Georges Bank dredge survey abundance chart

Georges Bank Numbers





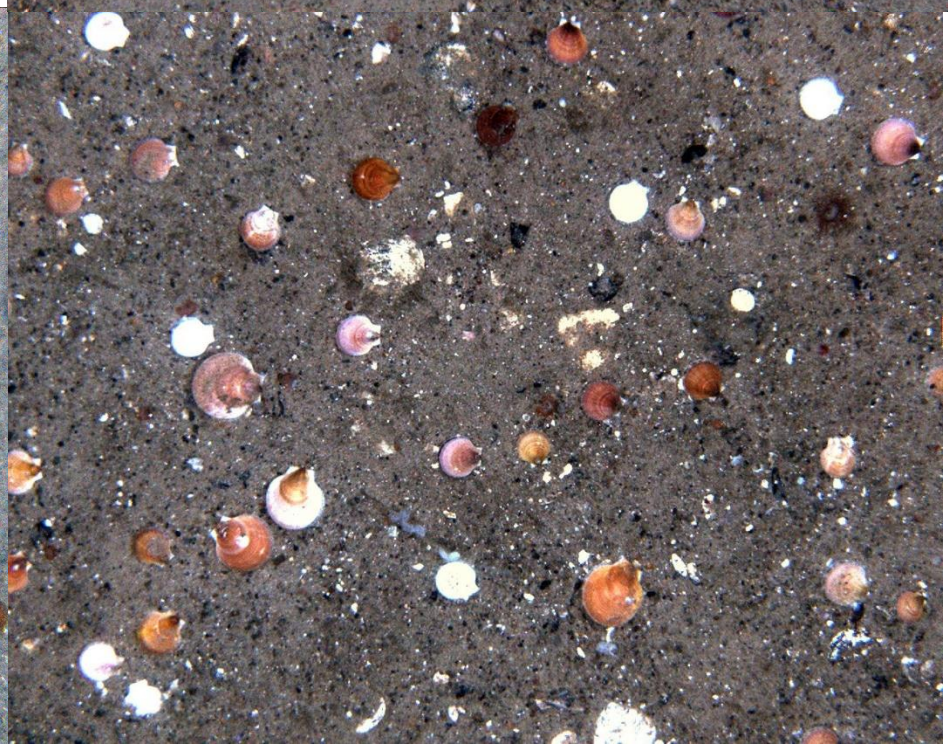
SW Georges Bank

Strong recruitment was observed all along the southern edge of Georges Bank and Nantucket Shoals

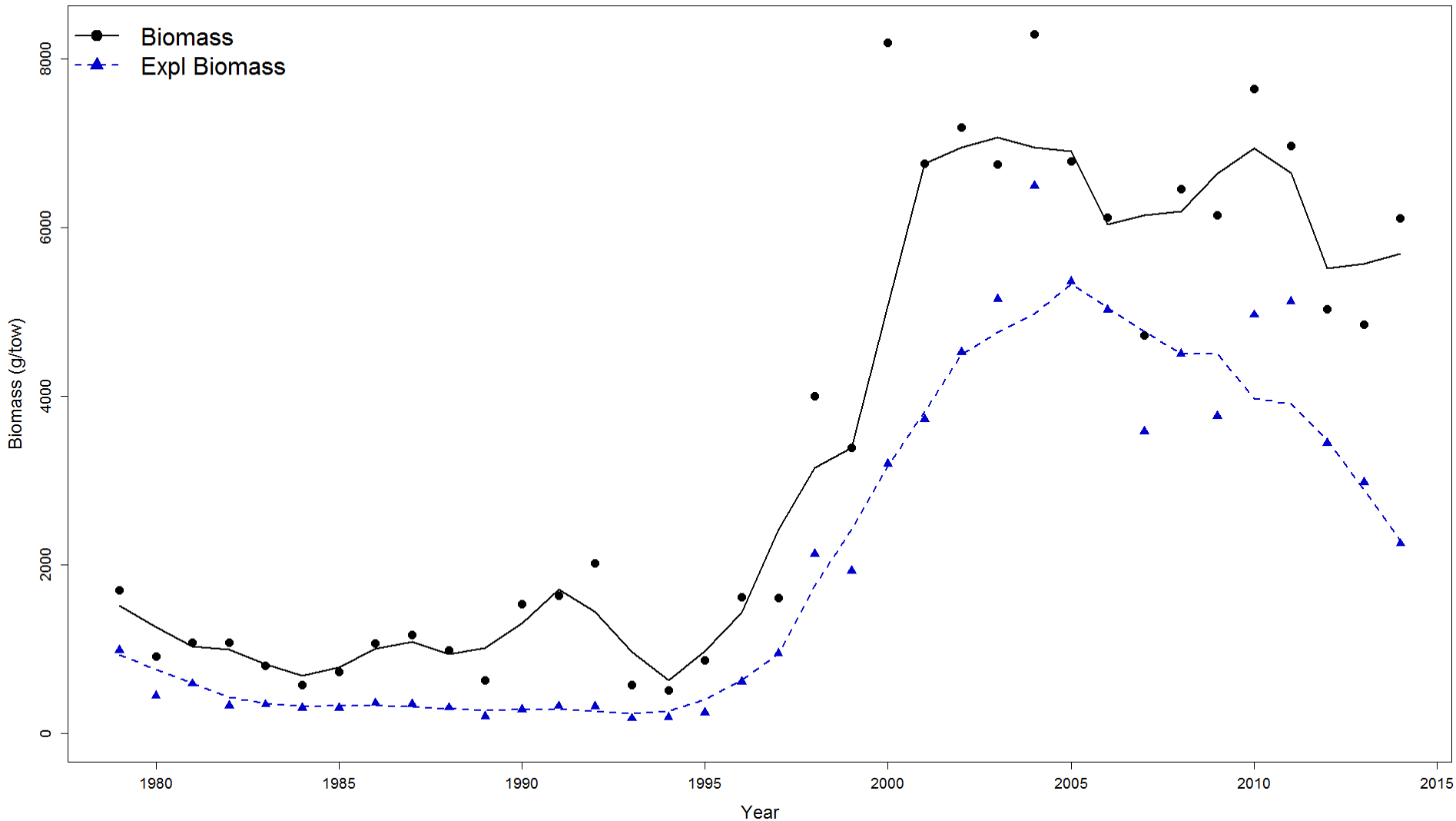


SE portion of Closed Area II

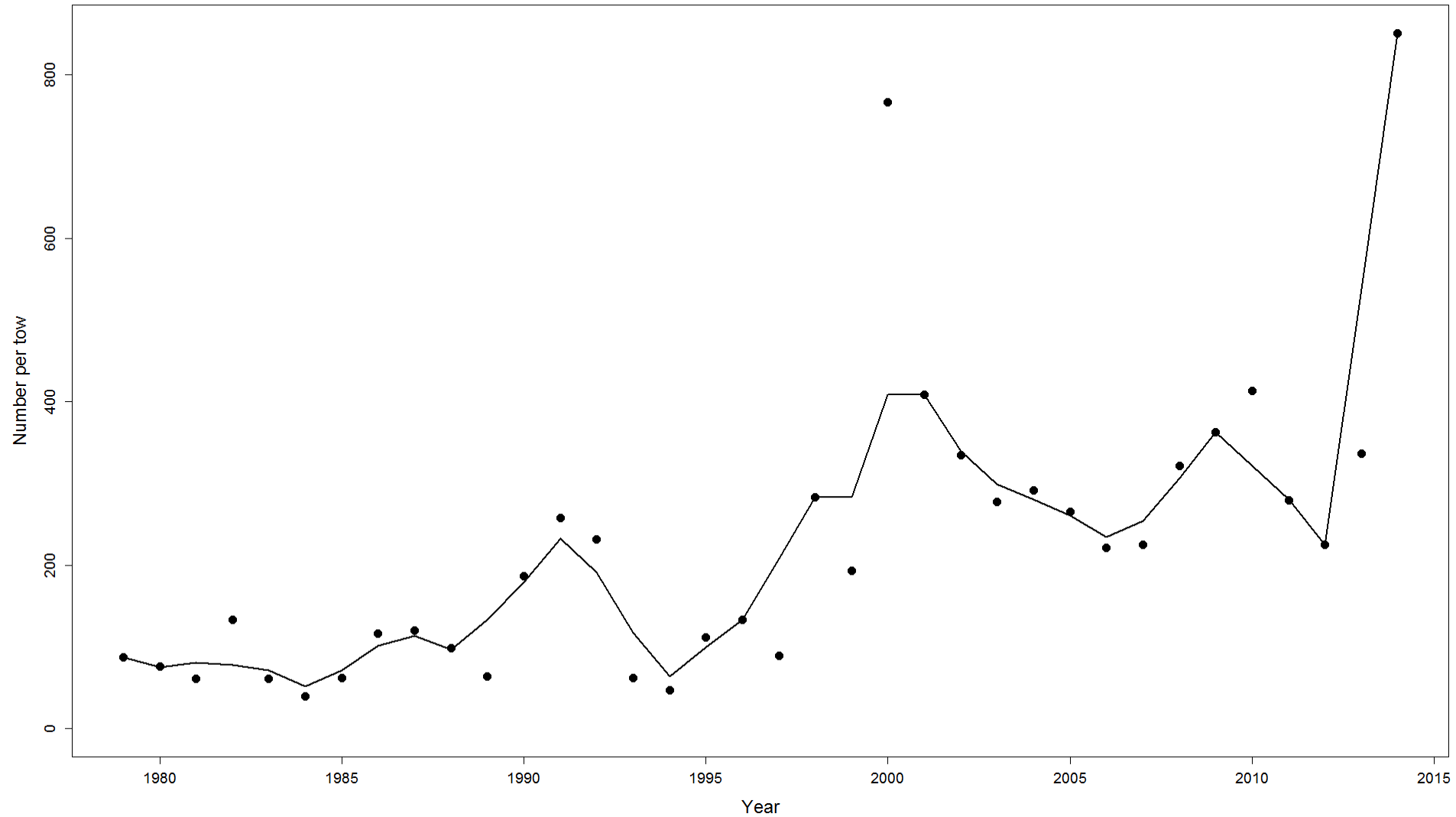
**Strong recruitment on
Georges Bank also
observed with v4 Habcam**



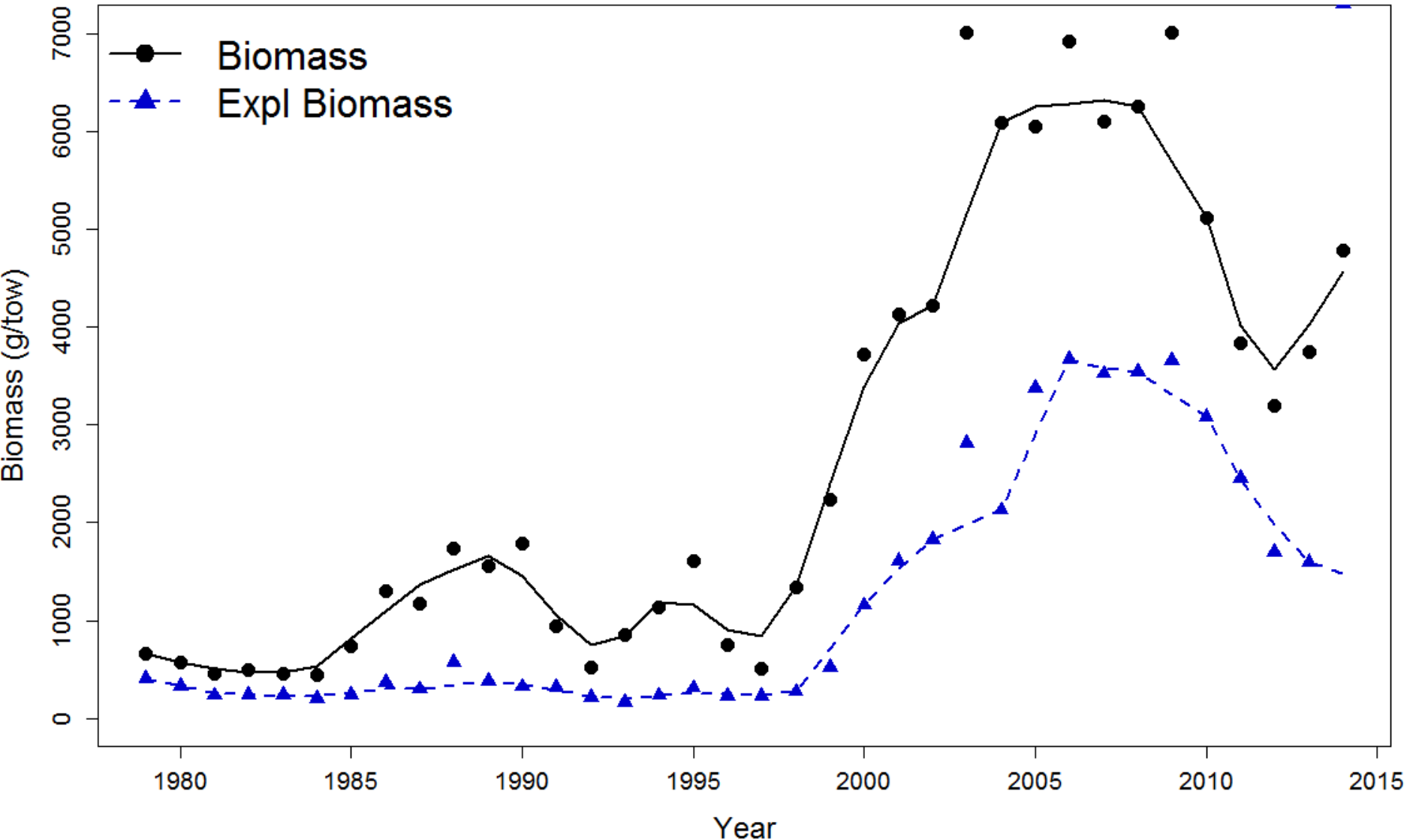
Georges Bank Dredge Survey Biomass and Exploitable Biomass Time Series



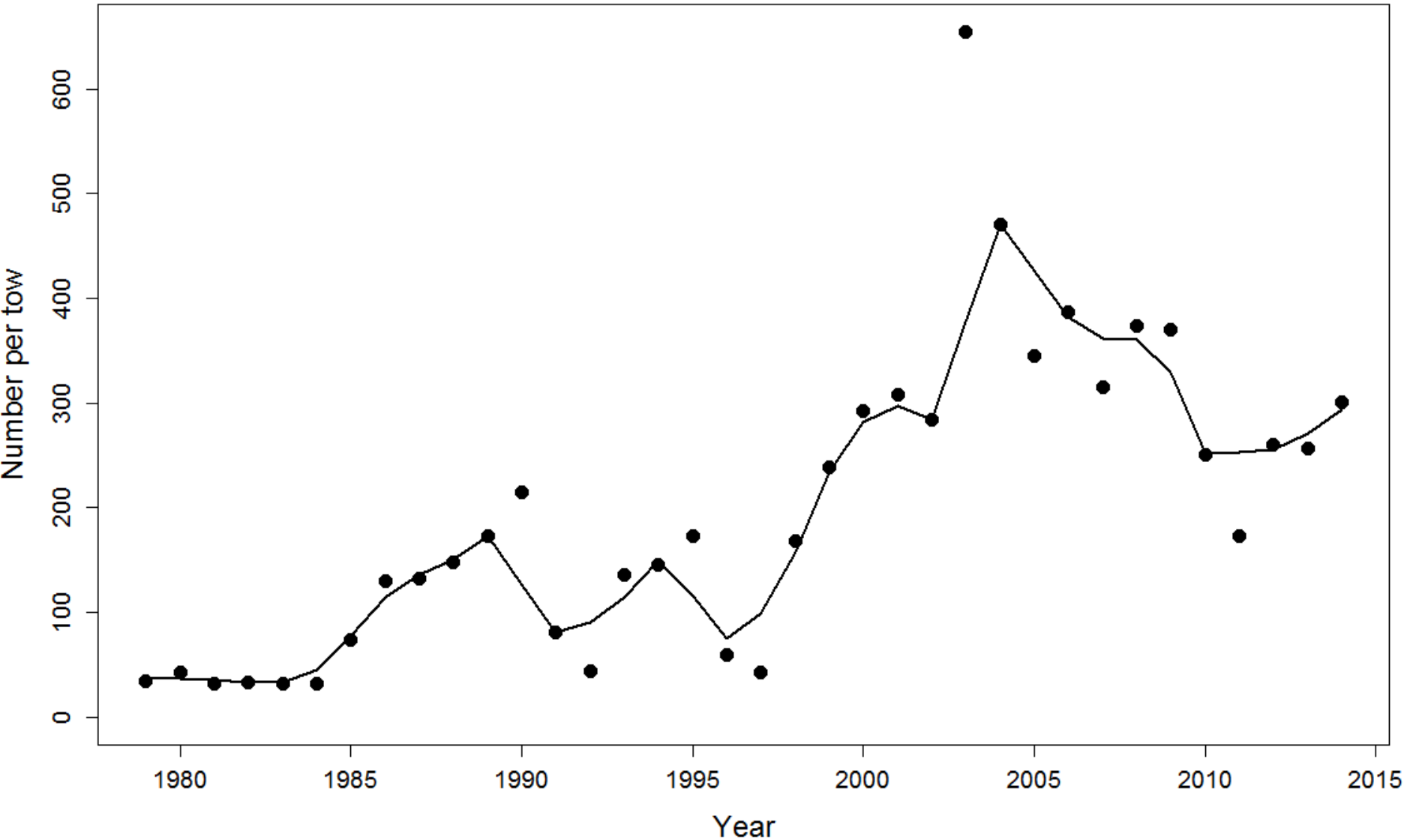
Georges Bank Dredge Survey Abundance Time Series



Mid-Atlantic Dredge Survey Biomass and Exploitable Biomass Time Series



Mid-Atlantic Dredge Survey Abundance Time Series





4 year old scallops

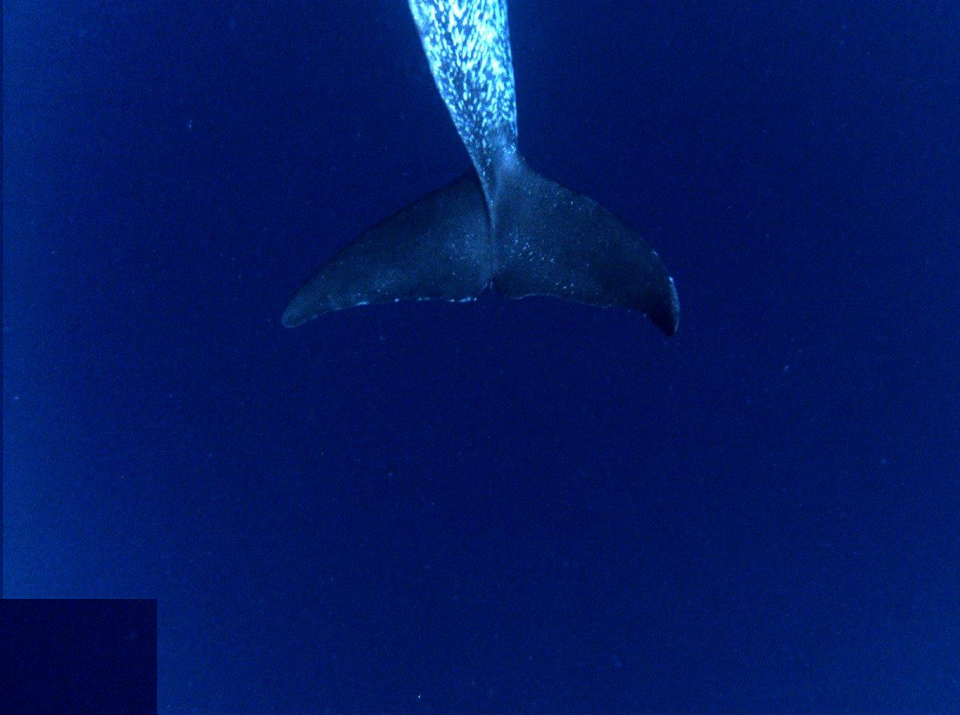
Mid-Atlantic Habcam Survey
Continued tracking of 2010
year class (now 4 years old),
and observations of
recruitment (2012 year class)
Also observed many one
year olds (2013 year class)
off of Long Island



Scallop recruitment

Another good year for haddock recruitment on Georges Bank





A Habcam first –
a dolphin!