

Strategies for overfished stock status determination and rebuilding

Andrew Applegate

EBFM Plan Coordinator

September 24, 2019



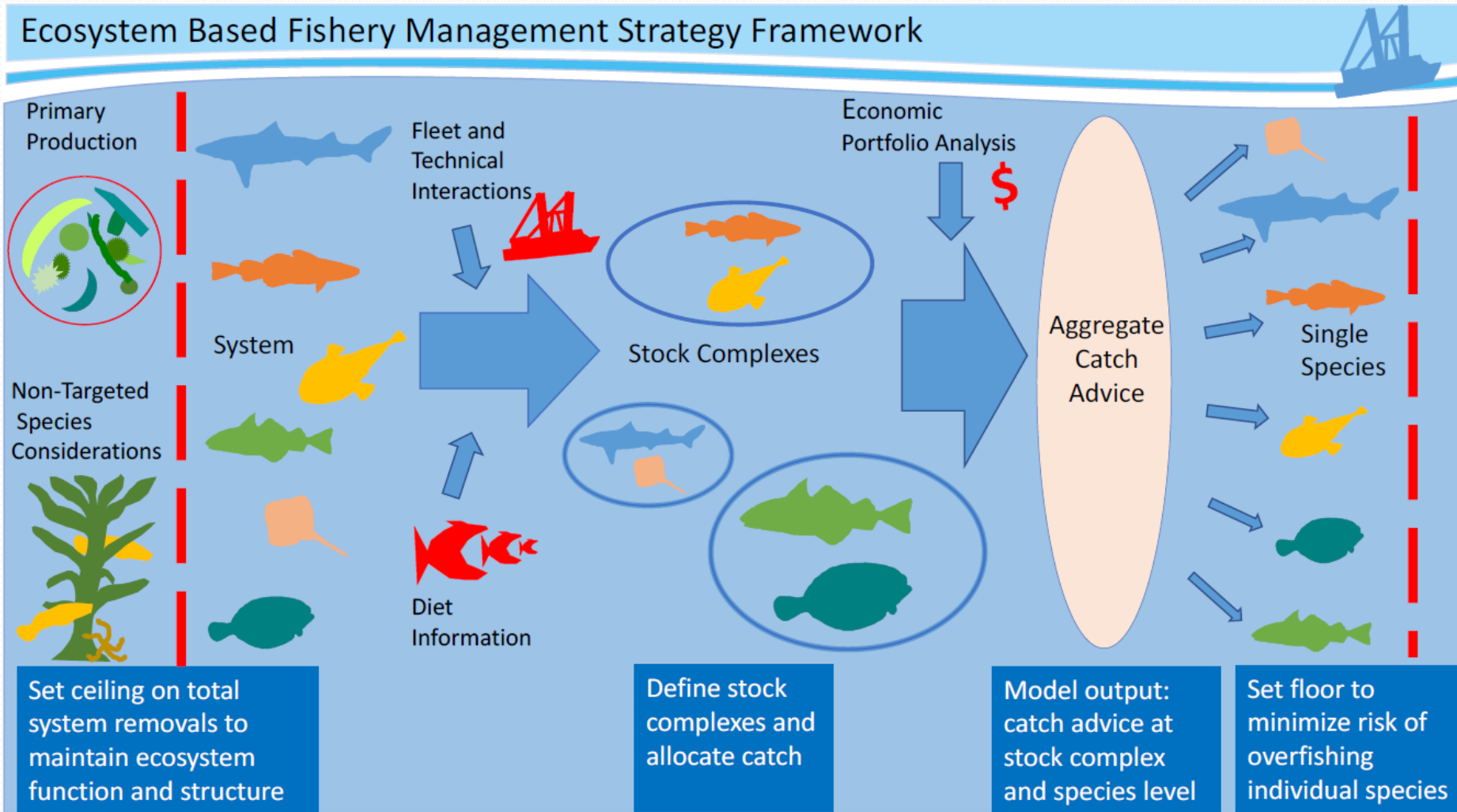
**NOAA
FISHERIES**

NEFSC

Background and Brief Overview

Georges Bank eFEP
Joint EBFM Committee-PDT
Meeting August 21, 2019

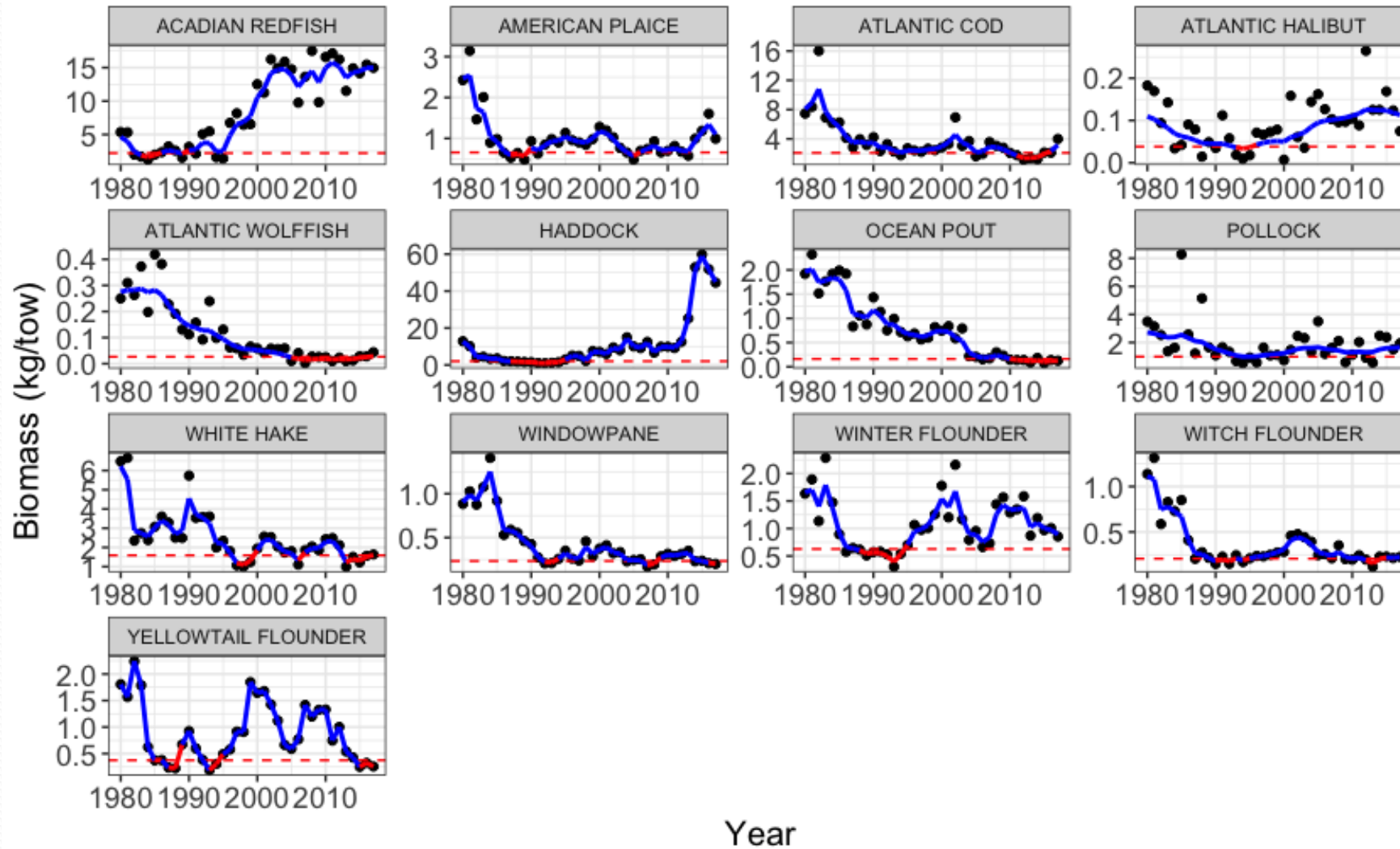
EBFM Framework



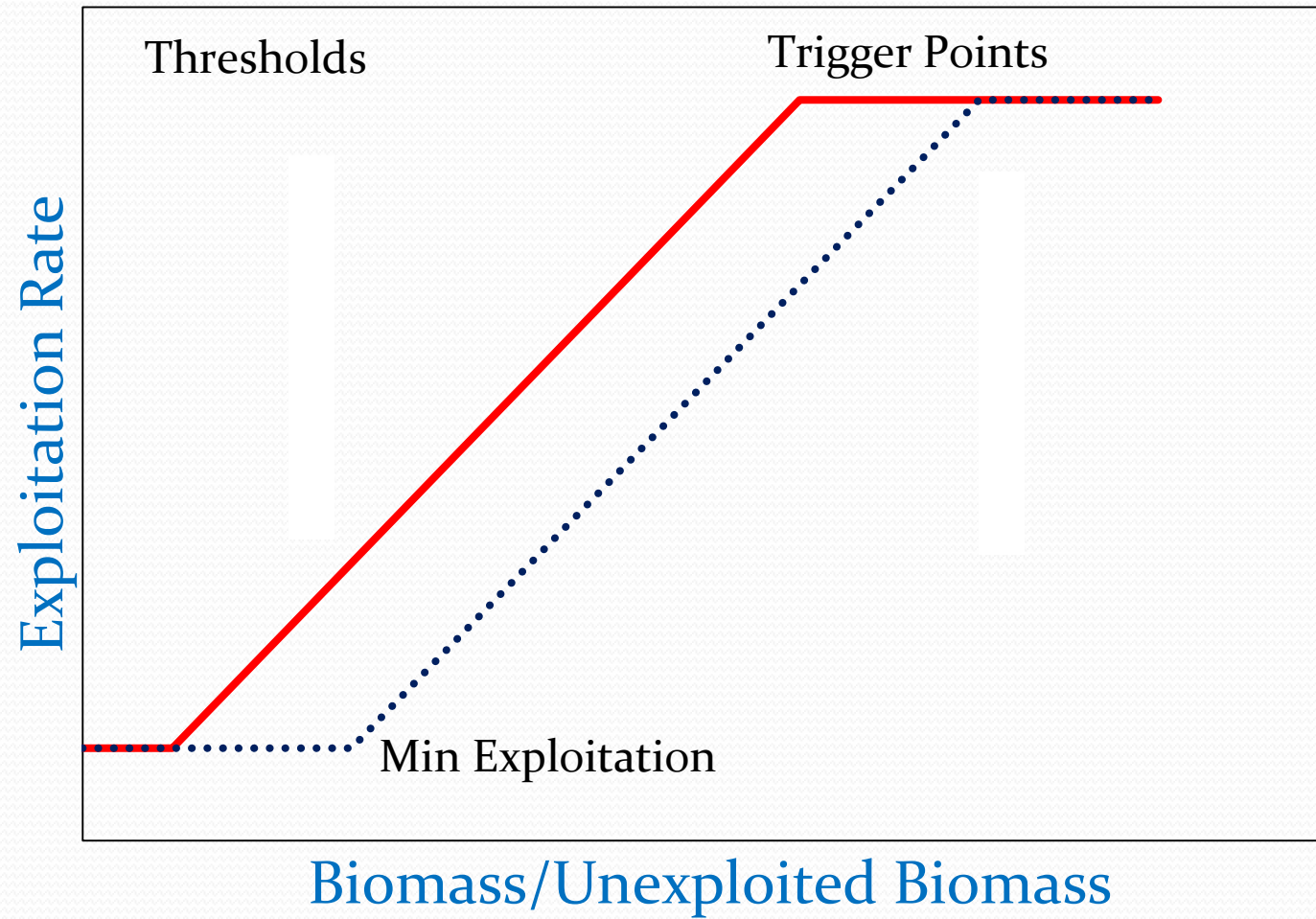
Amanda R. Hart UMass Dartmouth



Determining Depleted Status (Floors)



Harvest Control Rule



Potential Remedial Measures for Depletion (p 58)

- Apply Ramp-down Harvest Control Rule (HCR) with specified Triggers and Thresholds
 - HCR applies to stock complex
 - Thresholds also may apply to stocks
- Targeted Area Closures
 - Species with high habitat fidelity
- Species-specific sub-ACLs
 - Restrict landings/catch of depleted species
- Effort Restrictions where stock is primary target of a fishery
- Conservation Engineering Solutions (gear technology)
- Point Allocation System (Incentive-based measures)