

Skate Staff Presentation

Dr. Rachel Feeney (Skate PDT Chair)

Lou Goodreau

Jenny Couture

**Joint Skate AP/Committee
meeting
March 26, 2020**

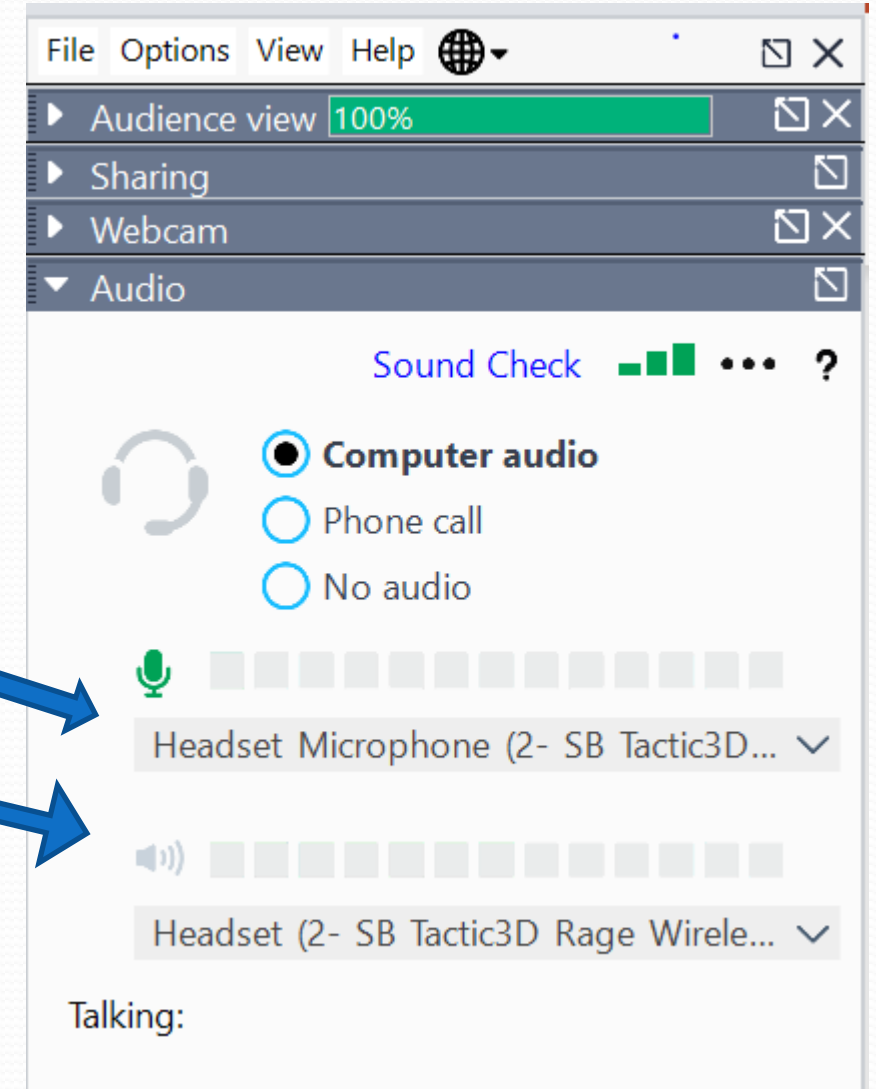


Webinar Instructions

Using Computer Audio:

(Once you have joined the webinar)

- In “Audio” settings box, select the microphone and speaker options that correspond with your computer.

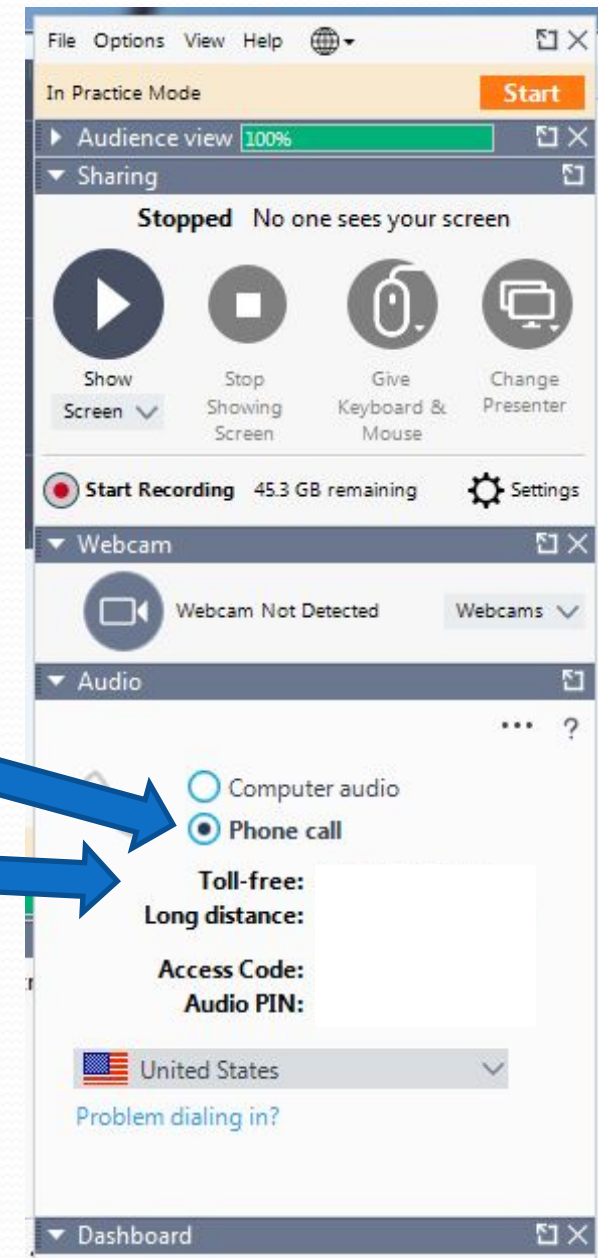


Webinar Instructions

Using Phone Audio:

(Once you have joined the webinar)

- In “Audio” settings box, select “Phone call.”
- Then, using your phone, call the number provided here. Enter the Access Code/Audio PIN numbers when prompted.



Webinar Instructions

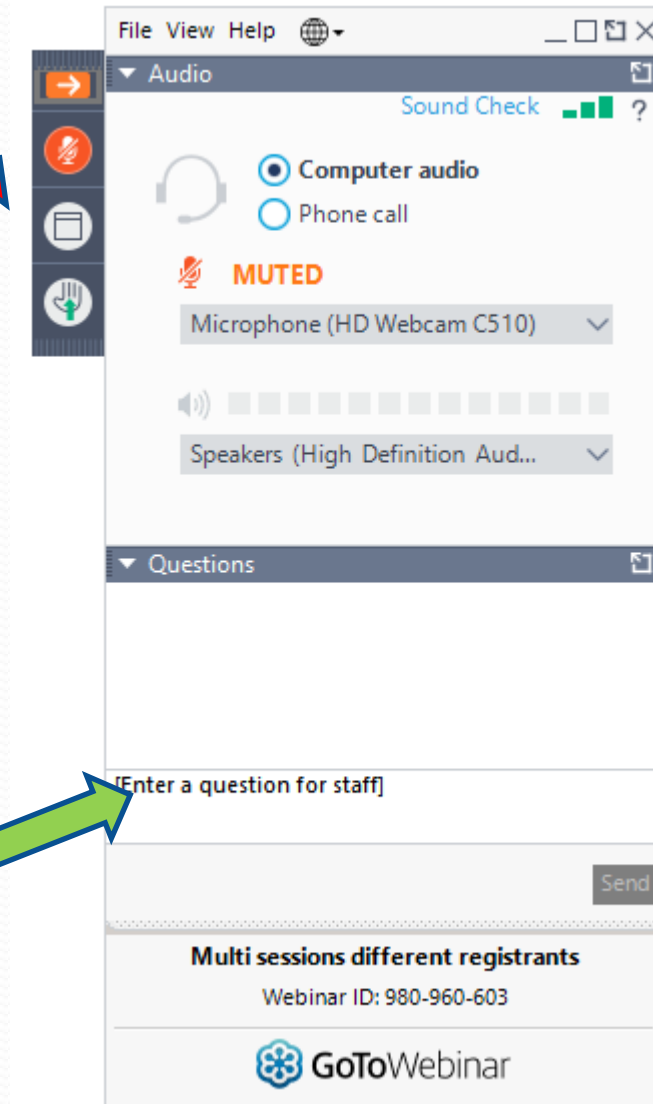
How to talk:

(Once you have joined the webinar)

- If you would like to talk, click **“Raise hand”** button.
- After being called on, make sure you are unmuted (red = muted, green = unmuted).
- You can also let us know if you’d like to speak by stating so in the “Questions” box, here.

How to ask a technical question:

- Type your question here.
- We will type a response to you or whole group if applicable.



Webinar Instructions

Other protocol:

- The Committee or AP Chair will state when it is time to ask questions or comment, generally after presentations or motions.
- We will handle questions/discussion by the convening body first, followed by others (incl. public).
- People with “raised hands” will generally be called in the order their hand was raised.
- If you have audio problems, you may type a question, which staff or chair will read.
- Any motions will be voted on by roll call.

Any questions?



Webinar Instructions

Other protocol:

- The meeting chair will state when it is time to ask questions or comment, generally after presentations or motions.
- Questions will be entertained in the following order:
 - Council/Committee members
 - Advisory Panel members
 - Public
- People with “raised hands” will generally be called on first to speak (and in the order their hand was raised), followed by staff reading any written questions.
- Any motions will be voted on by roll call.

Any questions?



Introductions & Approval of agenda


Relevant documents

1a - Meeting agenda

1b - Meeting memo

Introductions

Doc #1a

Skate Committee		
Rick Bellavance, RI		Laurie Nolan, MAFMC
Libby Etrie, MA (Vice Chair)		Scott Olszewski, RIDEM
Peter Kendall, NH		John Pappalardo, MA
Matthew McKenzie, CT (Chair)		Mike Ruccio, NMFS/GARFO
Melanie Griffin, MADMF		
Skate Advisory Panel		
Greg Connors, MA (2017)		Gregory Mataronas, RI (2014)
Charlie Dodge, MA (2017)		William McCann, MA (2017)
James Dopkin, NJ (2020)		Randall Morgan, MD (2020)
Sonja Fordham, DC (2001)		Daniel Nordstrom, MA (2011)
Andrea Incollingo, RI (2001)		Ted Platz, RI (2011)
Jeff Kneebone, MA (2020)		John Whiteside, MA (2017, Chair)
Scott MacAllister, MA (2020)		
Skate Staff		
Rachel Feeney	Jenny Couture	Lou Goodreau

Welcome
new AP
members!

Agenda

8:30 am	Webinar logistics, introductions, approval of agenda
8:45	NEFMC Advisory Panel policies
9:00	Offshore wind energy updates
9:40	2020 skate work priorities
9:50	Skate fishery performance (2019-2020)
10:15	Amendment 5 <ul style="list-style-type: none">•Recap development of amendment to date•Discuss PDT work on Committee tasking•Potentially create a problem statement, refine goals/objectives and develop alternatives•Discuss use of NMFS social indicators of skate fishing communities
12:00	Lunch
1:00 12:30??	Amendment 5 cont.
4:10	2020-2024 Research priorities and data needs
4:30	Other business
4:45	Adjourn

We will take short breaks about every 90 min.

Any revisions?



NEFMC Advisory Panel policies

Purpose

Introduce/review Council policies
and meeting ground rules

Relevant documents

1e - AP Policy
1f - Travel guidelines

NEFMC Advisory Panel Policies

- **Welcome and thank you for serving!**
- Role: Support developing or amending an FMP or special issue or problem. All AP recommendations are advisory to the Committee, not binding for Committee or Council.
- Membership: Maximum of 15 individuals
 - 1) Actively engaged in some aspect of commercial or recreational fisheries.
 - 2) Knowledgeable in the conservation and management of a fishery.
 - To the extent possible, membership shall reflect broad cross-section of interests and expertise from geographical distribution, user groups, etc.
 - The recreational fishing industry shall have at least one seat on the herring and habitat APs.
 - Other Councils may be invited to name advisors to serve.



NEFMC Advisory Panel Policies

- Organization:

- AP Chair
 - Designated by Committee Chair, reviewed by Executive Committee and approved by Council Chair.
 - Expected to routinely communicate meeting results to relevant committee.
 - Seated at the Committee table. They may not vote but can freely enter the discussion. AP Chairs must identify comments as “discussed by the AP” or “personal input”. AP Chairs must leave committee table when providing personal comments.
 - A vice-Chair can be designated but is not required. The vice-Chair may be authorized to attend committee meetings in place of the AP Chair with advance approval of the Executive Director.

- Commitment:

- Number of meetings varies by panel and year – range of 0-5 per year.



NEFMC Advisory Panel Policies

- Appointments:

- After three years performance and attendance will be reviewed. If needed, new members will be solicited to fill any vacancies.
- All members must apply for re-appointment at the end of each 3-year term.
- Neither proxies nor designees shall serve in place of appointed advisor.
- Prior to selection, nominees are subject to additional level of review by NOAA's Office of Law Enforcement.

- Termination:

The Council *may* replace an AP members at its discretion if he/she:

1. Transfers employment or moves;
2. Absent for two or more consecutive meetings without adequate notification;
3. Appears unable or unwilling to fulfill obligations;
4. Area of expertise no longer required; or
5. For just cause (e.g. marine violation, failure to show respect for other panel members, disruptive behavior).



NEFMC Advisory Panel Policies

- Travel Authorization and Reimbursement:

- Eligible for reimbursement of travel expenses incurred while attending authorized meetings (e.g. mileage, hotel overnight, meals, etc.), subject to availability of funds.
- Reimbursed from APs primary residence, as reflected on application.
- To qualify for overnight lodging, your travel distance must be over 50 miles or requires you be available before 6 a.m. or after 8 p.m.
- Additional guidance found in Operations Handbook pages 38-40.
- Questions on travel? Contact us before travel takes place.

- What to expect:

- Staff may send poll by email before a meeting to identify possible meeting dates, and sometimes a date will just be selected by the Committee Chair.
- Prior to a meeting staff will email memo from Chair with meeting purpose.
- Monitor you emails from staff and check website frequently.
- To the extent possible, come prepared with draft motions and discussion points.



Meeting Ground Rules

- Come to every meeting prepared, when possible review documents from staff before arriving at the meeting.
- Follow the agenda as managed by the Chair (i.e. stay on topic).
- Participate in the discussion! You are here for a reason – share your knowledge.
- Listen respectfully to the comments of others; give other opinions honest consideration.
- Be open to points of view that may differ from your own.
- Discuss the issues – avoid personal attacks.
- Avoid profane language.
- Sustain a professional meeting environment before, during and after meetings.



Unacceptable Behaviors

- Ridicule of another person's opinions or suggestions.
- Threats aimed at anyone (Council/AP/PDT member, staff, public).
- There is a zero-tolerance harassment policy.
 - This includes verbal, non-verbal or physical harassment that has the purpose or effect of creating a hostile environment. It also includes unwelcome sexual advances, requests for sexual favors, and other verbal, nonverbal or physical conduct based on sex. .
- Discrimination on the basis of: sex, race, religion, color, national origin, age, sexual orientation, disability, or reprisals for whistle blowers.

Council leadership is committed to these standards.

Please contact the Council Chair, Vice Chair, or Executive Director if you are concerned that these standards are not being upheld.



Thank you!

- The Council appreciates your time and effort.
- Your participation is a critical step in this overall process.
- Your input is important and valuable.
- We look forward to working with you.
- Any questions, contact our staff anytime.

(978) 465-0492



Questions?



Offshore Wind Energy Updates

Purpose

Updates on and discuss wind energy development, Council activities and fishermen involvement

Relevant documents

2a – Staff slides on wind energy

2020 Skate Work Priorities

Purpose

Review the skate-related work priorities the Council approved for 2020 with potential milestones for completion.

Relevant documents

1d – timeline of skate work

Skate timeline

Doc #Id

		Skate Amendment 5	Annual Monitoring Report	Assessment	Specifications
2020	Jan				FW8 submitted
	Feb	Skate PDT mtgs			Proposed and final rule
	March	Skate AP/Cte mtgs re data and purpose of action			
	April	Council mtg to consider recommendations			
	May	Future work TBD			FW8 implemented
	June		PDT develops annual monitoring report		
	July				
	August				
	Sept				
	Oct				
	Nov				
	Dec				
2021	Jan				2022-23 specs developed
	Feb				
	March				
	April				
	May				
	June		PDT develops annual monitoring report		
	July			Management track assess. in Sept.	Final action?
	August				
	Sept				Specs submission process
	Oct				
	Nov				
	Dec				

Questions?
Discussion?



FY 2019 skate fishery performance and outlook for FY 2020

Purpose

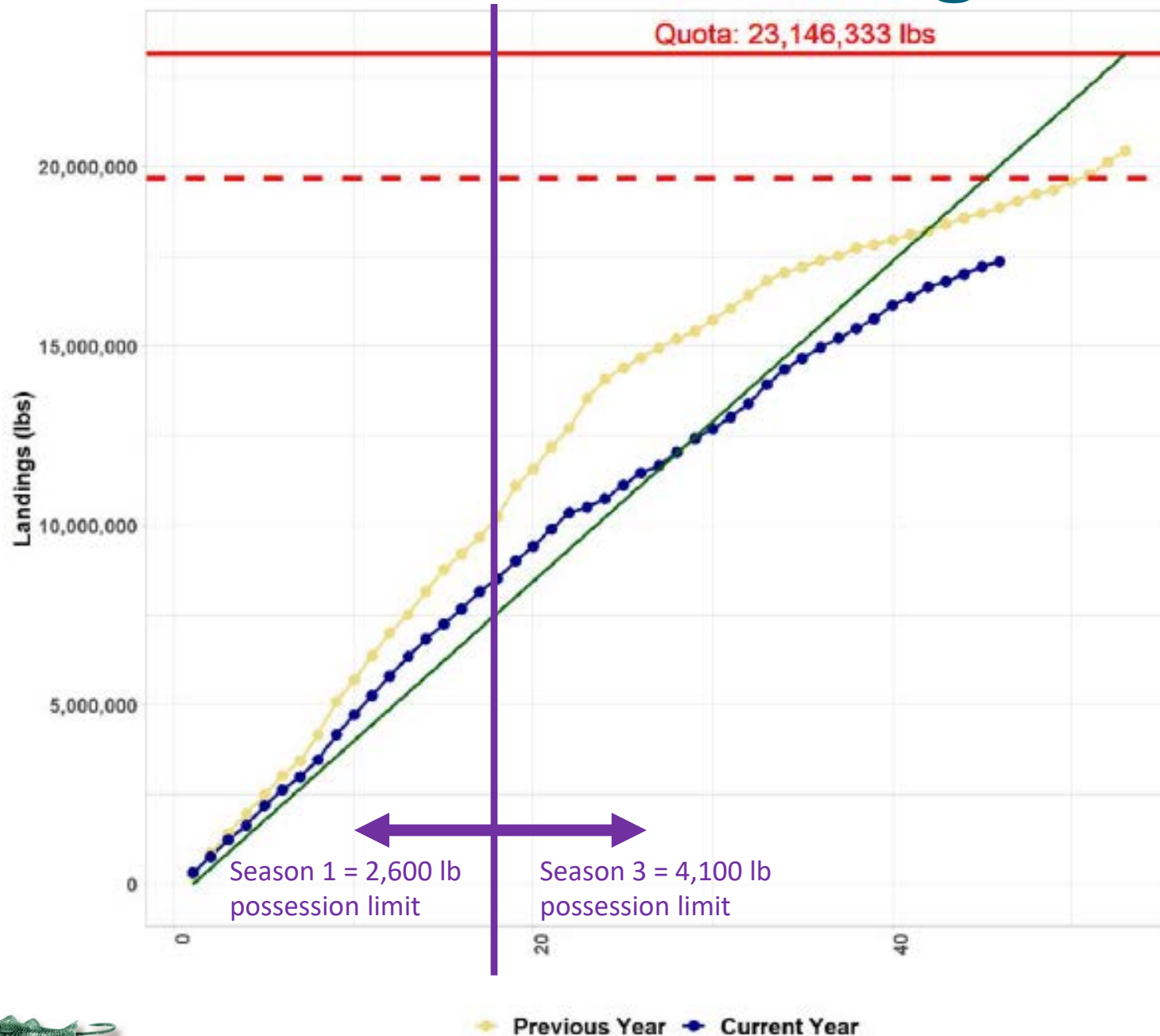
AP share feedback on how FY 2019 is progressing and expectations for FY 2020.

Relevant documents

3a – Skate quota monitoring

FY 2019 wing monitoring report

Doc #3a



(75% of quota landed as of Mar 19)

FY 2020:

The wing TAL would increase from 23.1M to 26.2M lb.

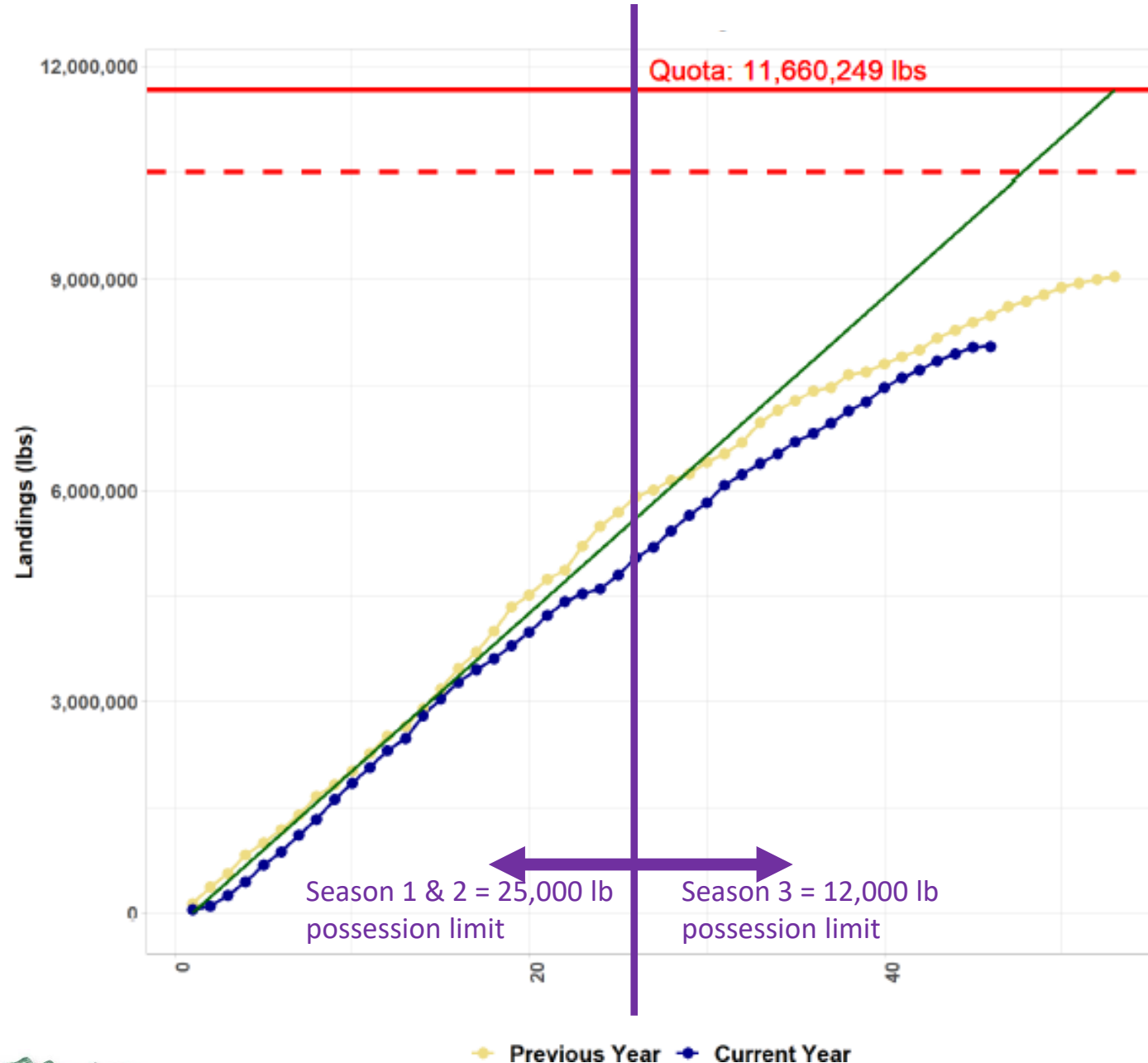
The wing possession limits would increase from 2,600 to 3,000 lb (wing weight) in Season 1 and from 4,100 to 5,000 lb in Season 2. Barndoor skate wing possession limits would increase from 650 to 750 lb in Season 1 and from 1,025 to 1,250 lb in Season 2.



FY 2019 bait monitoring report

Doc #3a

(69% of quota landed as of Mar 19)



FY 2020:

The bait TAL would increase from 11.7M to 13.2M lb.

The bait possession limit would increase from 12,000 to 25,000 lb in Season 3 (25,000 year-round).



Discuss fishery performance

Questions to open discussion:

- What factors have influenced recent fishing activity and how (e.g., possession limits, market conditions, environment/ecosystem, species distribution)?
- How is the fishery expecting to adjust to the FY 2020-2021 specifications?
- What other factors may impact the fishery going forward (e.g., coronavirus)?

*Questions?
Discussion?*



Amendment 5

Purpose

Recap work to date and do Council tasking to define a clear problem statement, goals/objectives for Amendment 5.

Relevant documents

All docs within

- 4 – Amendment 5
- 6 – Meeting Summaries
- 7 - Correspondence

Meeting Plan

- **Introduction:** Tasking from Council and orientation towards defining problem statements and goals (McKenzie).
- **Staff presentations:**
 - PDT memo on A5 progress:
 - Recap development of Amendment 5 (Feeney).
 - Draft qualification criteria and potential landings under current possession limits (Goodreau).
 - PDT memo on fishery data: Fishery declaration and disposition data (Couture).
- **AP and Committee work:** Potentially create a problem statement, refine goals/objectives and develop alternatives (McKenzie).
- **Staff presentation:** Use of NMFS social indicators in identifying skate fishing communities (Feeney).

NOTE: The Skate Committee report is being postponed from the April to June Council meetings.

Council tasking

- In December 2019, the Council:
 - Approved continuing work on Amendment 5 as a 2020 priority, and
 - Tasked the Skate Committee to define a clear problem statement, goals, and objectives for this action.
- This action has considered for several years:
 - Bait fishery control date set in 2009, wing in 2014.
 - Council launched scoping in 2016.



Getting ideas flowing...

A Decision-Making Process Model

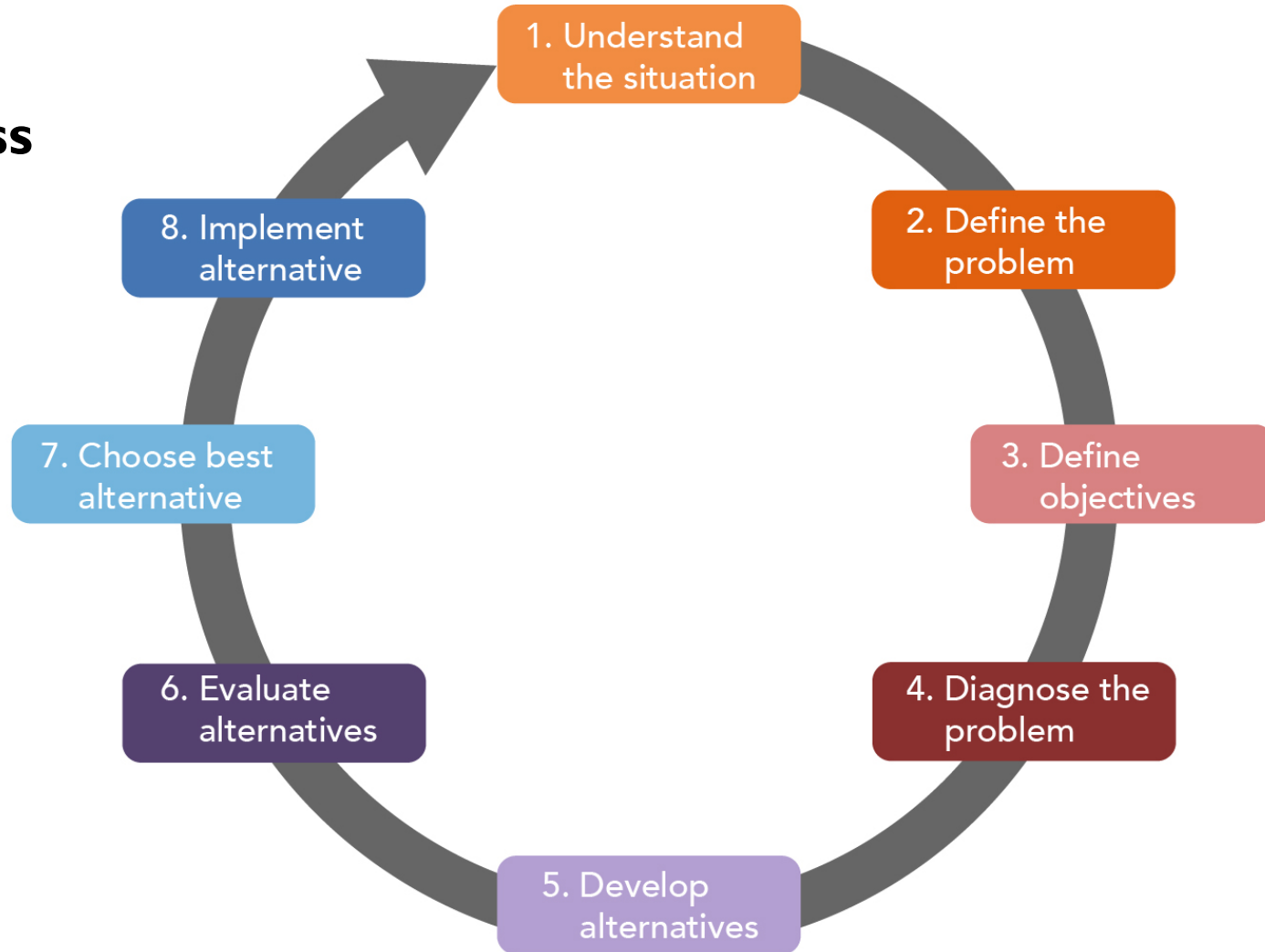


Image from Lumen Learning



Defining the Problem

What core issues/challenges may impede success?

“A problem was originally framed with the best information available at that time. However, after spending considerable time and potentially other resources, perceptions about the problem can change. It is worthwhile to pause and reexamine the definition that has been chosen. Opportunities to redefine the problem can often lead to better decisions.”

-Management Concepts

Skate AP/Cte needs to consider if and what has changed since Amendment 5. Are the issues identified then still relevant?



Creating a Problem Statement

Identifying the problem first ensures that we are focused on the same goal.
This establishes a foundation for success.

- 1. State the problem as you see it.**
- 2. State what is clearly known.**
 - The assumption of the problem.
 - What caused the formulation of the problem.
 - The connection between the cause and the problem.
- 3. Identify the constraints from both/all sides.**
 - Constraints narrow the range of alternatives.
 - Identifying challenges presented by constraints will yield better problem definitions as well as result in better decisions.
 - Identifying constraints will lead to more actionable decisions.
- 4. Understand what other decisions will impact or hinge on this decision?**
- 5. Obtain additional perspectives** asking others how they see the problem.
- 6. State the problem definition.**



Goal setting

What result does the Council want to achieve?

- Goals can be used as a road map for the decision-making process, from the establishment of alternatives, to the analysis of the alternatives, and the justification of the proposed recommendation.
- What are the common characteristics of well-crafted goals?

"SMART Goals"	Description
Specific	Specific and clear in intent and expectation
Measurable	Measurable standards that can be quantified
Attainable	Realistic and attainable within imposed limits
Results-oriented	Measures accomplishments
Time-bound	Contains timeframes and standards of performance



Recap development of A5

Control dates:

Bait: 7/30/2009

Wing: 3/31/2014

Year	Amendment 5	Frameworks
2016	Approve scoping document	FW3: 2016-17 specs, trimester wing TAL
2017	Scoping hearings Review scoping comments	FW4: lower Season 3 bait limit & trigger FW5: 2018-2019 specs, barndoor possession limit, NAFO regs.
2018		FW5 cont. FW6: lower uncertainty buffer
2019	Feb-May: Cte develop objectives, PDT tasking on qualification criteria & participation Jun: Approve objectives Jun-Dec: PDT tasking on participation cont.	FW8: 2020-21 specs, revise wing & bait possession limits
2020 to ???	Refine problem statement and goals, develop alternatives, DEIS, public hearings, final action???	FW8 cont. (minor)



Amendment 5 – scoping document

Council approved in November 2016:

- “Limited access in the skate fisheries would prevent unrestrained increases in fishing effort by new entrants to the fishery.”
- Skate fishermen “are concerned that increasingly strict regulations in other fisheries...might cause these fishermen to switch over to fishing for skates....[which]... could trigger reduced skate trip limits and have other negative economic impacts on current participants...”

Question for later discussion: The Council hasn't approved a problem statement yet. This could be the basis for one. Is this still a problem? Is there a different problem?



Amendment 5 – objectives

Council approved in June 2019

- “Any management measure adopted in this limited access action minimizes the impact on any other fisheries that has interactions with skates.”
- “To identify the various fishery components that use the skate resources and to preserve, to the extent possible, through limited access ongoing participation the fishery consistent with how past utilization has occurred.”



Work in 2019: proposed qualification criteria & tasking

Doc #4a, p. 5

- **Qualification criteria (draft):**
 - AP developed wing and bait LA qualification categories.
 - Committee considered but hasn't approved.
- **PDT tasking:**
 - Provide # vessels, lb landed, # trips, revenue, landings on trip declaration and reliance for the draft criteria.
 - PDT had challenges with querying declaration data.
- **In October, Committee:**
 - Wanted to better understand the fisheries and fishermen using skates before making LA criteria.
 - Tasked the PDT with resolving data challenges and additional analyses.
 - Discussed need to clarify objectives/problem statement before proceeding much farther.



Current PDT tasks

1. Ensure data queries do not produce duplicate data.
- Correct/clarify data 2. Explain the undeclared trips (esp. wings).
3. Explain cases where wing landings > possession limits.
-
4. Provide data for years other than FY2017.
- Provide more data 5. Include the number of vessels when reporting data by declaration code and program code.
6. Include average revenue on qualification tables.
-
- Correct/clarify data 7. Identify under which declaration(s) are trips that are using the gillnet large mesh exemption.

*Questions?
Discussion?*



PDT tasks: Draft qualification criteria and potential landings under current possession limits

Doc #4a
p. 13

DRAFT Wing Qualification Criteria*

Qualifications (wing landings in any one FY)			
Category	FY2003 to Control date	Category	Control date to FY2018
1a	≥100,000 lb	1b	≥100,000 lb
2a	75,000 to <100,000 lb	2b	75,000 to <100,000 lb
3a	50,000 to <75,000 lb	3b	50,000 to <75,000 lb
4a	25,000 to <50,000 lb	4b	25,000 to <50,000 lb

*for limited access in the skate wing fishery developed by the AP at their May 21, 2019 meeting (the wing control date is March 31, 2014).



Qualifying vessels under draft wing qualification criteria

PDT Task #6

Permit Category	Number of Vessels	2003-2013		
		Live Landings (lb)	Total Revenue	Average Revenue/Vessel
Qualifying years: FY 2003 through CD				
1a	103	261,024,631	\$55,702,491	\$540,801
2a	40	27,593,638	\$6,140,314	\$153,508
3a	46	25,546,244	\$5,816,982	\$126,456
4a	105	30,819,069	\$7,283,967	\$69,371
Note: these data are through the end of FY 2013 (April 30, 2014), not March 31, 2014, the CD. There could be a few vessels that fished in April 2014 that would qualify.				
Qualifying years: CD through FY 2018				
1b	12	14,208,406	\$3,622,457	\$301,871
2b	7	5,846,558	\$1,294,169	\$184,881
3b	12	4,825,303	\$1,139,982	\$94,999
4b	23	4,826,426	\$1,122,872	\$48,821
Note: these data are FY 2014-2018, not after March 31, 2014. There could be a few vessels that fished in April 2014 and would not qualify.				



Vessels NOT qualifying under draft wing LA permit criteria

Permit Category	Number of Vessels	Live Landings (lb)	Total Revenue	Average Revenue/Vessel
5.1 (500-25,000 lb)	469	28,753,197	\$7,384,494	\$15,745
5.2 (<500 lb)	530	1,488,778	\$384,298	\$725
5 (Total Non-qualifiers)	999	30,241,975	\$7,768,792	\$7,776



Potential wing landings with FY 2020 possession limits (PL)

Doc #4a, p. 17

Wing Group 5.1 (non-qualifiers):

		PL (lb)	Number of vessels*	Total Landed (lb)			
				1 trip/ vessel	2 trips/ vessel	3 trips/ vessel	4 trips/ vessel
5.1	Season 1	3,000	469	1,407,000			
	Season 2	5,000		2,345,000			
	Total			3,752,000	7,504,00	11,256,00	15,008,00

* The number of vessels in column three is from the previous table for wings (469 non-qualifiers).

Note: Cells for 2-4 trips are left blank to be able to use this table as a worksheet.



Potential wing landings with FY 2020 possession limits (PL)

Annualized avg wing landings for the qualification groups (groups 1b to 4b summed), FY2003-2018:

Group	Live lb			Landed lb			No. vessels
	Total	Average		Total	Average		
1a	If Wing Groups 1a - 4b operate at long-term 'average' year, → 11.4 M lb landed (99% of FY 2020 wing TAL)						
1b to 4b							
5.1	If Wing Group 5.1 (the non-qualifiers) landed one trip at wing possession limit in each season → 3.75M lb landed						
5.2	If Wing Group 5.2 (vessels never historically landed over incidental limit) landed one trip at 500 lb → 265,000 lb landed						
Total	404,932,250	25,308,266		196,395,535	12,274,721		1,347

Non-qualifiers



DRAFT Bait fishery qualification criteria*

Doc #4a, p. 14

Bait LA permit	Qualification	Trip Limit
1	LOA prior to CD and active (>1 live lb) FY 2014 - 2018	25,000 lb
2	Had LOA after CD and ≥50,000 live lb in any 1 year, FY 2009-2018	10,000 lb
3 (Non-qualifier)	Other	1,200 lb

*Structure of limited access program as proposed by AP members present at the April 23, 2019 meeting (bait control date is July 30, 2009).



Vessels within draft bait qualification criteria

PDT Task #6



Permit Category	Number of Vessels	Live Landings (lb)	Total Revenue	Average Revenue/Vessel
1	30	72,987,252	\$6,778,947	\$225,965
2	24	63,406,247	\$6,298,055	\$262,419
Non-qualifiers				
3.1 (1,135-50,000 lb)	172	31,455,085	\$2,779.348	\$16,159
3.2 (<1,135 lb)	158	497,541	\$40,411	\$256
3 Total (Non-qualifiers)	330	31,952,626	\$2,819,759	\$8,545



Potential bait landings with FY 2020 possession limits (PL)

Doc #4a, p. 18

Annualized avg bait live landings for qualification groups, FY 2004-2018:

Group	Live lb			Landed lb			No. vessels
	Total	Average		Total	Average		
1	If Bait Groups 1 and 2 operate at long-term ‘average’ year → 9.1 M lb landed (69% of FY 2020 bait TAL)						
2							
3.1	If Bait Group 3.1 (vessels never historically landed over possession limit) landed one trip at bait possession limit → 4.3 M lb landed (33% of bait TAL)						
3.2	If Bait Group 3.2 (vessels never historically landed over incidental limit) landed one trip at 1,135 lb incidental limit → 189,600 lb landed (1% of bait TAL)						
Total	168,346,125	11,223,075		167,896,816	11,193,140		384

Non-qualifiers

Questions? Discussion?



Fishery declaration & disposition data

PDT Task #1: Ensure data queries do not produce duplicate data.

- Resolved data query methods → removed duplicative trips and doubled landings.
- Potential source data issues discovered. PDT focused on finding errors in undeclared trips:
 - Trips with landings disposition code likely miscoded (i.e., landings were recorded as wing but likely bait – lower price and equivalent landed and live weight).
 - Trips with wing landed weight > live weight
 - Source data issues account for 0.9% in FY17 and 0.1% in FY18 of total landings.
- PDT forwarded potential issues to APSD office. This QAQC process should be done for all data, not just undeclared.



Skate Fishery Regulations, Reporting

- Vessels with a Federal fishing permit can participate in Federal skate fishery and land wing or bait if also has a Federal skate permit (endorsement) and land higher bait possession limit with a LOA.
- To land over incidental limit, must declare into and use a DAS in NE multispecies, monkfish, or scallop fishery.
- No VMS requirement per skate fishery regs.
- Vessels with a Federal NE groundfish, scallop, or monkfish permit must use VMS whether or not fishing on a DAS or DOF in exempted area.
- If fishing with a Federal fishing permit, vessels must sell to a Federal dealer.

Defining terms:

“Federal fishing permit” = permit # >000000

“endorsement” = permit specific to a fishery



Undeclared landings ARE allowed when...

WING:

- Without Federal endorsement, over incidental limit from vessels w/ state fishing permit fishing in state waters that:
 - Sold to federal dealer, or
 - Reported via VTR but did not sell to Federal dealer.

BAIT:

- Vessel with a Federal fishing permit:
 - Without limited access permit and fishing for bait under a LOA fishing in exemption area, or
 - Without Federal skate endorsement fishing in state waters only and doesn't have any VMS-required permits but sells to a Federal dealer.



Undeclared wing landings **NOT** allowed when...

- **Without** Federal endorsement fishing in Federal waters and a de-activated Federal fishing permit
- **With** Federal endorsement:
 - No Federal declaration but selling to a Federal dealer, or
 - No Federal declaration, not selling to a Federal dealer but reporting via VTR

Note: total undeclared wing landings over incidental limit with and without Federal endorsements declined over the years examined.

*Questions on
regulations?*



PDT Tasks 4 and 5: Data by declaration code

- **Wing fishery**
 - Most landings from either declared NE multispecies trips (41-49% of wing landings), declared monkfish trips (36-45% of wing landings), and undeclared trips (6-15% of wing landings).
- **Bait fishery**
 - Most landings from either declared NE multispecies trips (29-63% of bait landings) or undeclared trips (20-44% of bait landings).
- Declaration data provided in memo for FY12, FY15, FY17, and FY18, including:
 - Vessels with a Federal fishing permit at time of landing, and
 - Vessels with and without a Federal endorsement.



Gillnet Large Mesh Exemption

PDT Task #7 - Identify under which declaration(s) are trips that are using the gillnet large mesh exemption.

- Northeast multispecies declaration:
 - A subset of the “NMS-SEC” declaration.
 - Identified by Multispecies Trip Start Hail.
- Do not use monkfish DAS.
- The exemption removes ASM requirements.
- No LOA requirement.

4.5 FY 2018

Table 5 – FY 2018 skate landings by declaration (plan) and program code.

	Live lb		Landed lb		Trips (#)		Vessels (#)	
WING landings by declaration (plan) code								
SES	6,832	0%	3,009	0%	54	1%	14	2%
SMB	371,279	2%	168,815	2%	722	7%	75	12%
DOF	892,153	4%	415,506	4%	1,791	17%	115	19%
Undeclared	1,167,012	6%	550,717	6%	1,952	19%	176	28%
MNK	8,027,842	39%	3,781,546	40%	2,582	25%	100	16%
NMS	10,128,637	49%	4,496,04	48%	3,208	31%	139	22%
TOTAL	20,593,755	100%	9,415,633	100%	10,309	100%	370 ^a	100%
WING landings by program code								
Confidential	3,749	0%	1,652	0%	9	0%	6	1%
SES-SCG	6,619	0%	2,915	0%	52	1%	12	2%
SMB-LHM	2,876	0%	1,267	0%	6	0%	3	0%
SMB-SCM	4,962	0%	2,185	0%	14	0%	5	1%
SMB-SLM	172,105	1%	77,837	1%	316	3%	42	6%
SMB-SQL	187,800	1%	85,968	1%	379	4%	47	7%
DOF-SCI	1,497	0%	659	0%	18	0%	4	1%
DOF-TST	4,041	0%	1,780	0%	5	0%	5	1%
DOF-CML	886,615	4%	413,067	4%	1,768	17%	111	16%
Undeclared	1,167,012	6%	550,717	6%	1,952	19%	176	26%
MNK-NAC	9,434	0%	6,722	0%	9	0%	3	0%
MNK-NAM	83,629	0%	36,841	0%	23	0%	7	1%
MNK-NAS	105,918	1%	46,660	0%	88	1%	14	2%
MNK-SAC	166,433	1%	83,605	1%	68	1%	8	1%
MNK-SAS	1,990,304	10%	971,215	10%	416	4%	23	3%
MNK-SAM	5,672,124	28%	2,636,503	28%	1,978	19%	72	11%
NMS-COM	195,830	1%	93,787	1%	202	2%	28	4%
NMS-SEC	9,932,807	48%	4,402,253	47%	3,006	29%	111	16%
BAIT landings by declaration (plan) code								
SMB	36,270	0%	36,270	0%	14	1%	7	7%
MNK	411,532	4%	411,532	4%	126	6%	9	8%
Undeclared	2,014,406	20%	2,012,566	20%	719	36%	35	33%
DOF	2,747,799	28%	2,747,799	28%	365	18%	22	21%
NMS	4,672,338	47%	4,672,133	47%	789	39%	34	32%
TOTAL	9,882,345	100%	9,880,300	100%	2,013	100%	74 ^a	100%
BAIT landings by program code								
Confidential	73,400	0%	73,400	0%	13	0%	6	0%
SMB-SQL	22,470	0%	22,470	0%	6	0%	4	4%
MNK-SAC	158,657	2%	158,657	2%	31	2%	3	3%
MNK-SAM	193,275	2%	193,275	2%	90	4%	5	5%
Undeclared	2,014,406	20%	2,012,566	20%	719	36%	35	32%
DOF-CML	2,747,799	28%	2,747,799	28%	365	18%	22	20%
NMS-COM	1,172,726	12%	1,172,504	12%	111	6%	11	16%
NMS-SEC	3,499,612	35%	3,499,600	35%	675	34%	23	21%

^a The number of unique vessels, not the column total.

^a The number of unique vessels, not the column total.

Doc #4d.
p. 7, 9



PDT Task #2: Explain the undeclared trips WING

Doc #4d. p. 13

- Data query method reduced # of undeclared trips.
- In FY 2017, 584,936 lb total undeclared landings over incidental limit.
 - **205,936 lb** federal endorsement-only trips with data errors removed
 - 2.4% total FY17 wing landings
 - 128 trips, max landing of 5,372 lb/trip
 - Most landings done by 3 permits, in Southern statistical areas (esp. 539, 612, 614), and fished using gillnet
- Similar trends in FY 2018.
- Undeclared landings decreased/time – increased understanding of regs.



PDT Task #2: Explain the undeclared trips BAIT

Doc #4d.p. 18

- Data query method reduced # of undeclared trips.
- Most undeclared bait trips > 1,135 lb had valid LOAs.
 - 22 trips (14%) in FY17 and 4 trips (2%) in FY18 without LOAs.
 - Mostly by 1 permit.



PDT Task #3 Explain cases where wing landings > possession limits

Data query method reduced # trips exceeding possession limits

- **All declaration codes:**
 - 65 vessels, 155 trips (FY17); 20 vessels, 113 trips (FY18)
 - 300,000 lb in FY17 and 200,000 lb in FY18 in excess
 - **Includes** potentially miscoded data and landings without Federal endorsement
- **Undeclared:**
 - ~21 trips, mostly by 2-3 permits in FY17 and FY18
 - 7,000 lb in FY17 and 18,000 lb in FY18 in excess
 - **Excludes** potentially miscoded data and landings without Federal endorsement

Note: exceeding possession limits is an issue mostly for trips without Federal endorsements


Questions?
AP and Committee work
on problem statement,
goals, etc.




Skate Fishing Communities

Primary Port Criteria. Ports that are substantially engaged in the fishery, and most likely to be impacted by the A8 alternatives.

Criteria:

- At least \$1M average annual revenue of skates during 2010-2018, or
-  A ranking of **high for engagement in and reliance on the skate fishery** on average in 2014-2018 according to the NMFS Community Vulnerability Indicators.

Secondary Port Criteria. Ports that are involved in the fishery to a lesser extent. Identifying them provides a broader scope of potential communities impacted by the A8 alternatives. Criteria:

- At least \$100,000 average annual revenue of skates, 2010-2018, or
-  A ranking of at least **medium-high for engagement in or reliance on the skate fishery** on average in 2014-2018 according to the NMFS Community Vulnerability Indicators.



NMFS Community Vulnerability Indicators

- Provide a broader view of fishery's role in communities than just looking at landings or revenue.
- The degree of engagement in or reliance on the skate fishery is based on multiple sources of information, averaged over five years, 2014-2018, using dealer data.

The engagement index incorporates the pounds and value of landed Atlantic herring, the number of herring dealers buying fish in that community, and the number of vessels with herring landings.

The reliance index is a per capita measure using the same data as the engagement index but divided by total population (U.S. Census) of the community.



State	Community	Community Index	
		Engagement 2014-2018	Reliance 2014-2018
ME	Monhegan (new S)	Low	High
	Portland (new S)	Medium-High	Low
MA	Gloucester (S)	High	Medium
	Boston (new S)	Medium-High	Low
	Scituate (new S)	Medium-High	Low
	Chatham (P)	High	High
	Harwichport (new S)	Medium-High	Medium-High
	Woods Hole (new S)	Medium	Medium-High
	New Bedford (P)	High	Medium
	Westport (S)	High	Medium
	Chilmark (new S)	Medium	High
	Little Compton (new P)	High	High
RI	Newport (S)	High	Medium
	Narragansett/Pt. Judith (P)	High	High
CT	Stonington/Mystic/Pawcatuck (S)	High	Medium
	New London (S)	High	Medium



State	Community	Community Index	
		Engagement 2014-2018	Reliance 2014-2018
NY	Montauk (new P)	High	High
	Amagansett (new S)	Medium	High
	Wainscott (new S)	Low	Medium-High
	Hampton Bays/Shinnecock (S)	High	Medium-High
	Oak Beach-Captree (new S)	Low	High
NJ	Belford (new P)	High	High
	Point Pleasant (S)	High	Medium
	Barnegat Light/Long Beach (new P)	High	High
	Sea Isle City (s)	Medium	Medium
	Cape May (P)	High	High
MD	Ocean City (new S)	Medium-High	Medium
VA	Newport News (new S)	Medium-High	Low
NC	Wanchese (new S)	Medium-High	Medium-High

Questions?
Does this reflect
where the fishery is
centered?



2020-2024 Council research priorities and data needs

Purpose

Review PDT input on updates.
Need Committee approval.

Relevant documents

5a – PDT memo on research priorities

Other Business