

Monkfish Specifications

FYs 2020-2022

Fiona Hogan, NEFMC

NEFMC
September 24, 2019



Summary

- ▶ **PDT recommendations**
 - ▶ Revised specifications for FYs 2020-2022 in NFMA
 - ▶ Revised specifications for FYs 2020-2022 in SFMA
 - ▶ No changes in current effort controls in either area
- ▶ **SSC recommendation**
 - ▶ Approved revised ABCs in both management areas for FYs 2020-2022
- ▶ **AP recommendation**
 - ▶ Revised specs in NFMA & no action in SFMA for FYs 2020-22
- ▶ **Committee recommendation**
 - ▶ 1 yr specs in both areas (for FY2020 only)
 - ▶ Revisit specifications in 2020



2019 Operational Assessment

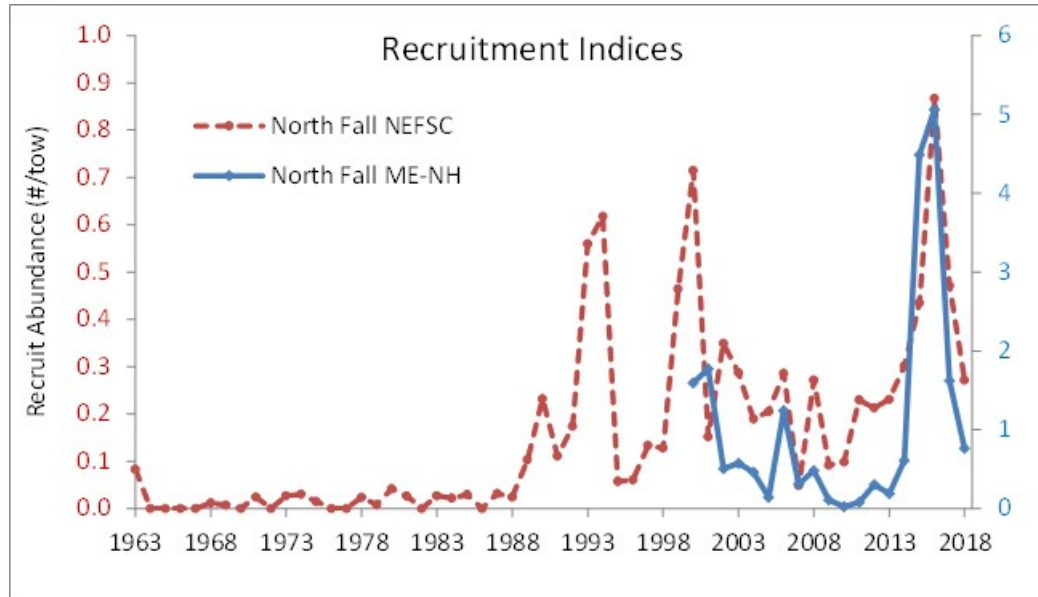
- ▶ **Assessment - still survey based**
 - ▶ 2010 assessment – SCALE model
 - ▶ 2013 operational assessment – SCALE model
 - ▶ 2016 operational assessment – survey indices
 - ▶ 2019 operational assessment – survey indices

- ▶ **NEFSC working on age-based assessment**

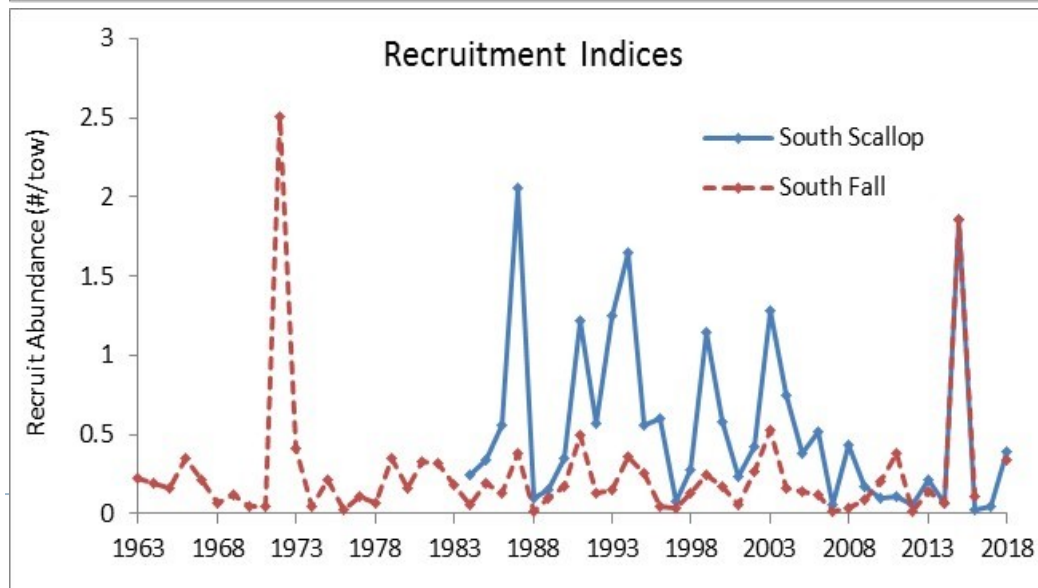


Recruitment

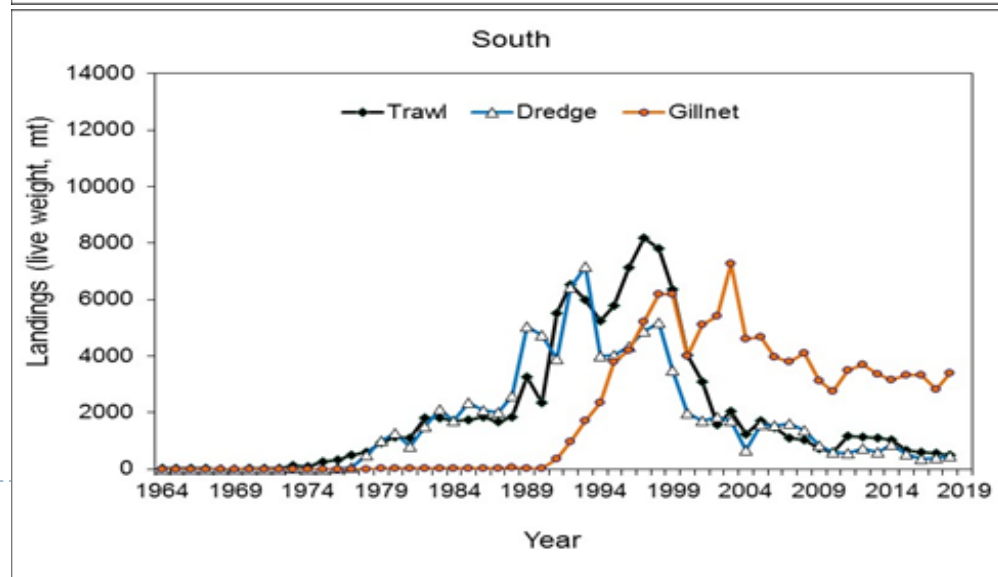
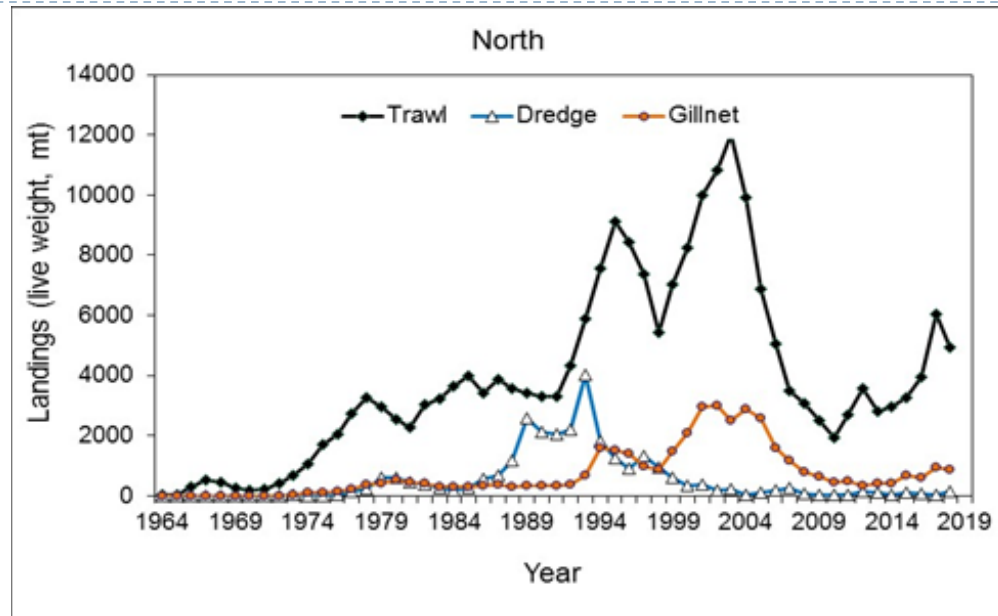
North



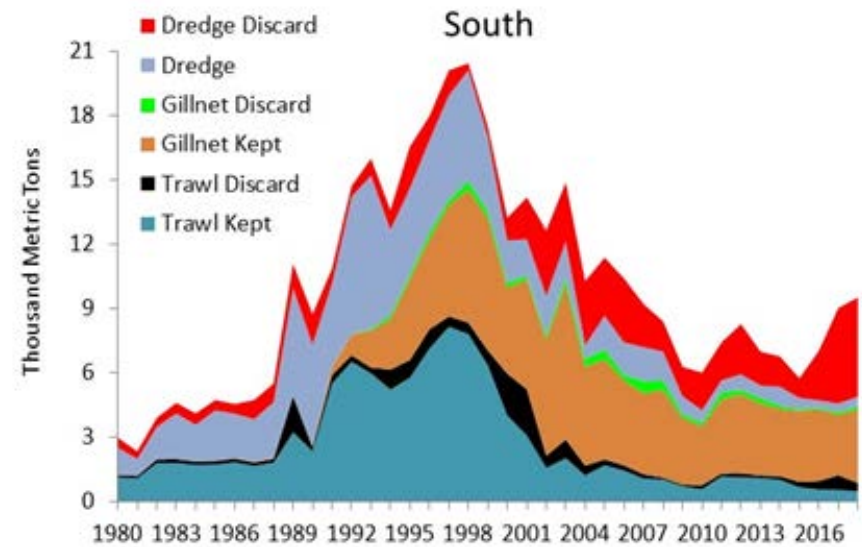
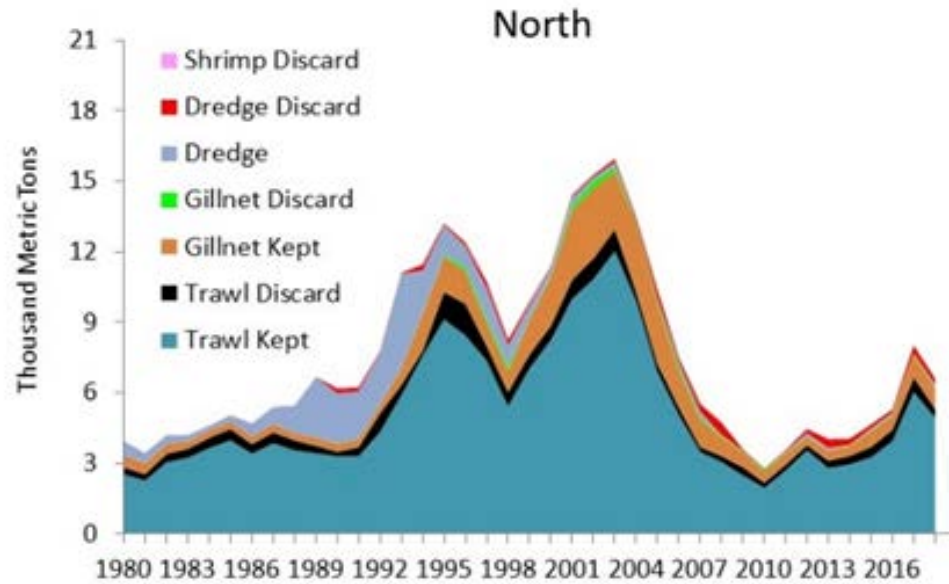
South



Landings



Discards



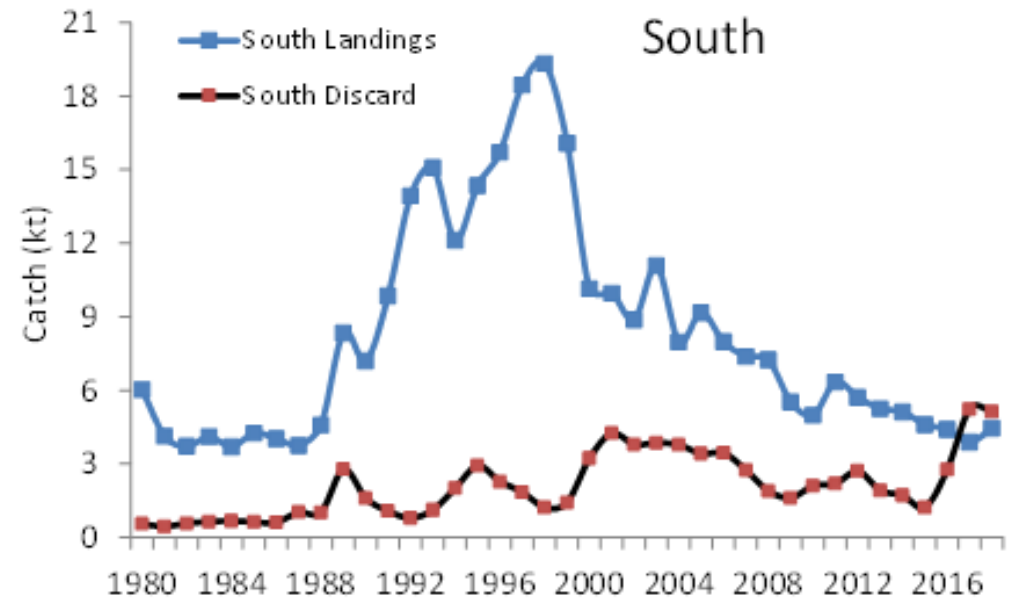
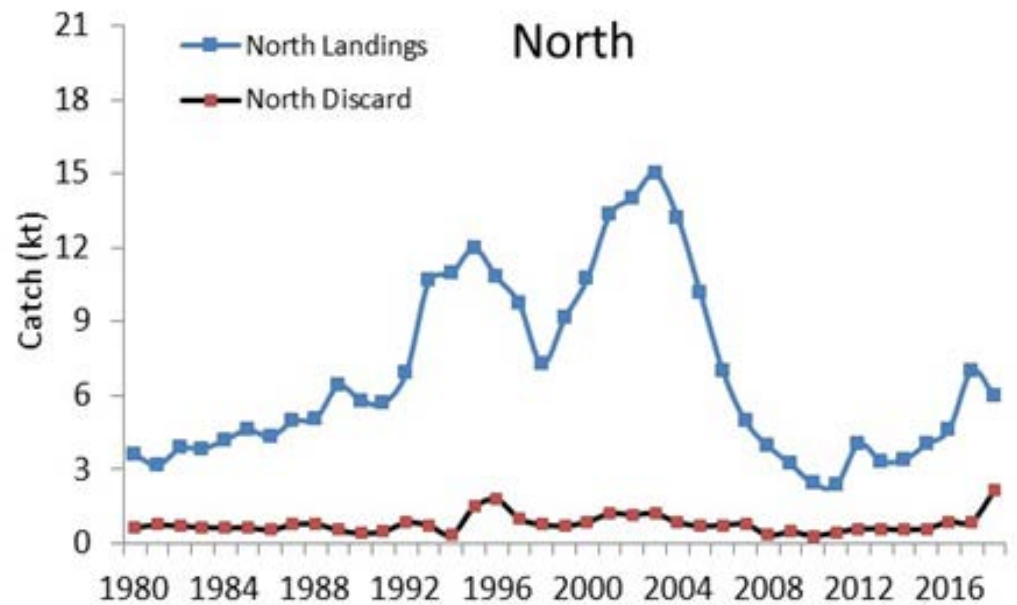
Discards

Discards have increased

Calculated using $D/(D+K)$
2016 – 2018

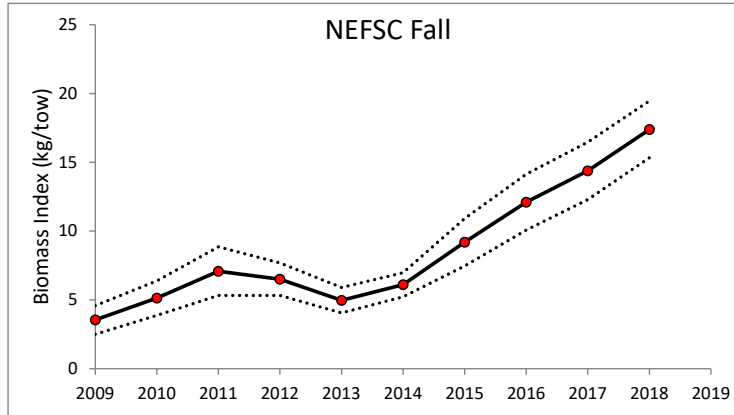
NFMA discard: 18%

SFMA discard: 51%

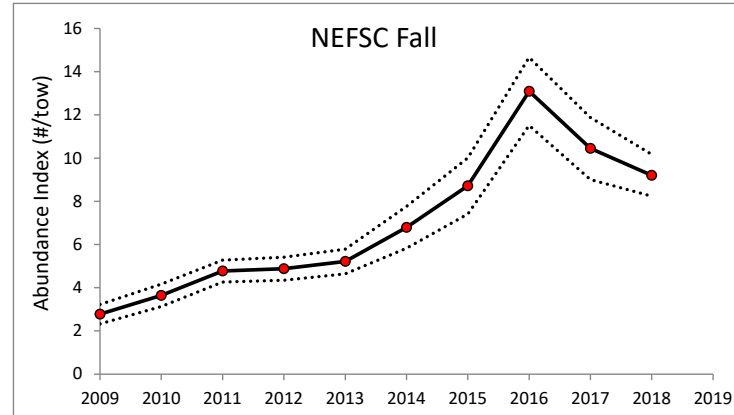


Northern survey indices

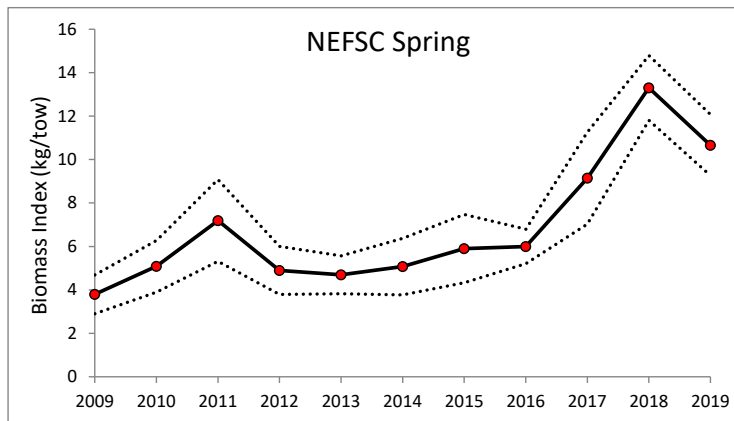
Biomass



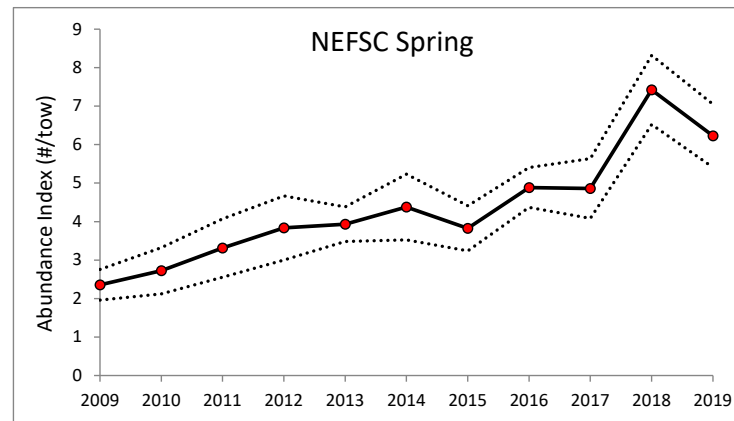
Abundance



NEFSC Spring

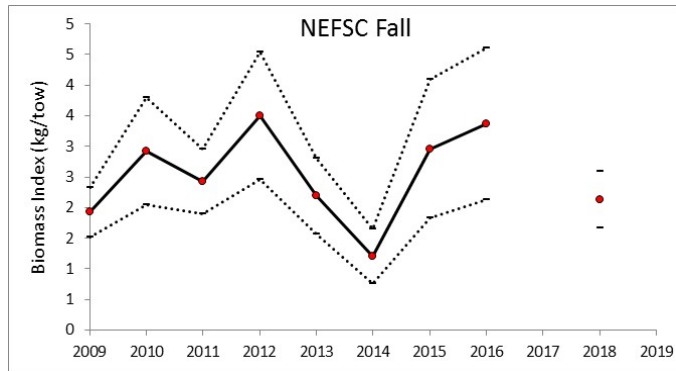


NEFSC Spring

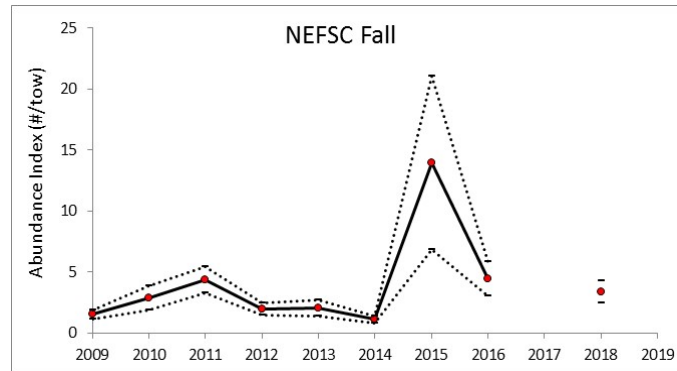


Southern survey indices

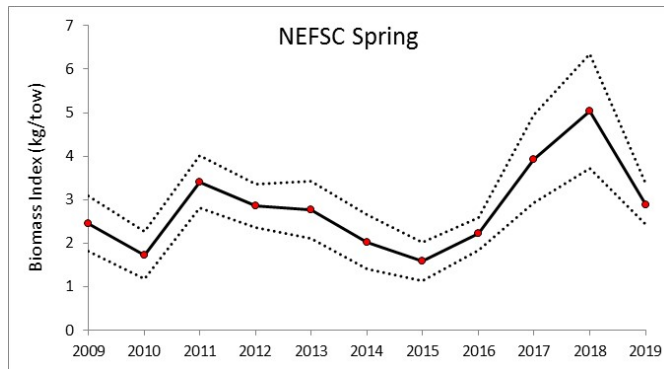
Biomass



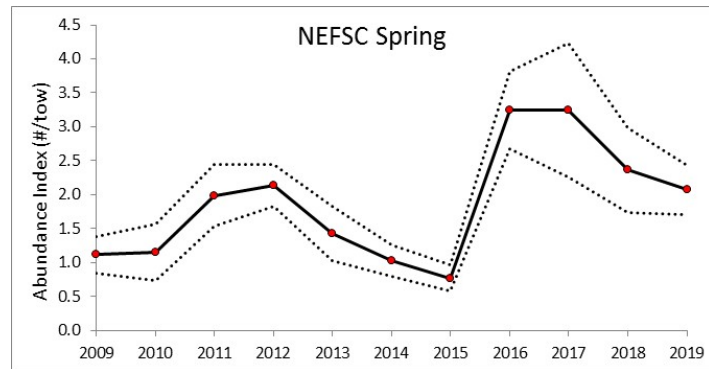
Abundance



NEFSC Spring



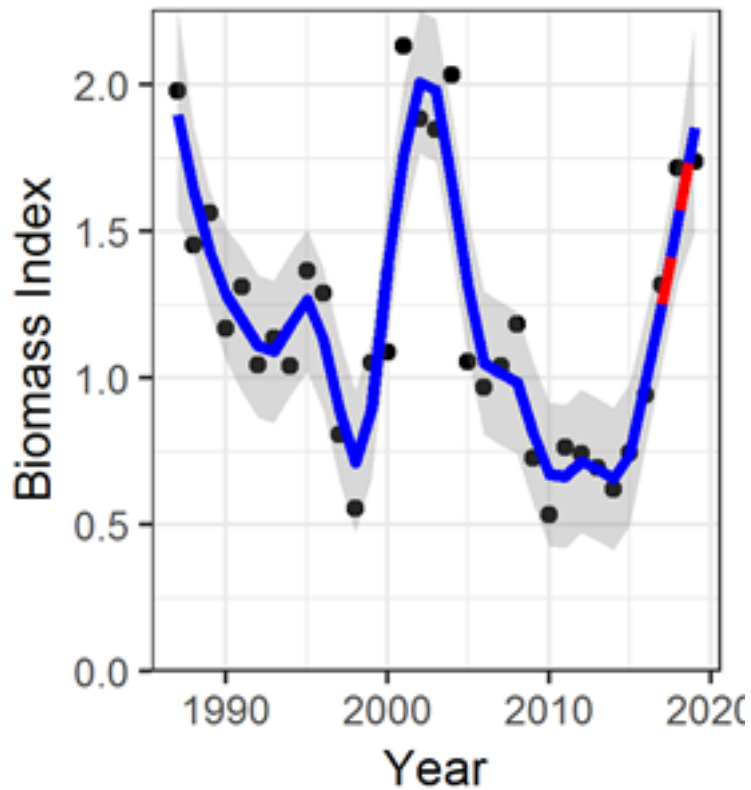
NEFSC Spring



Northern multiplier

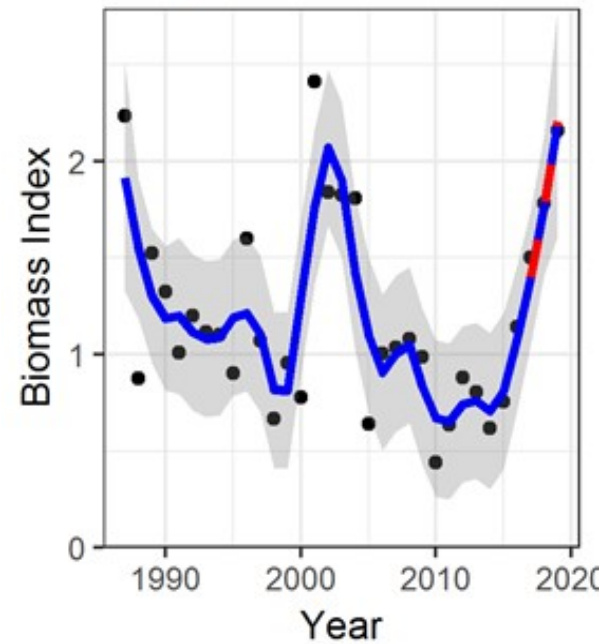
Monkfish N Spr+Fall

Multiplier = 1.218

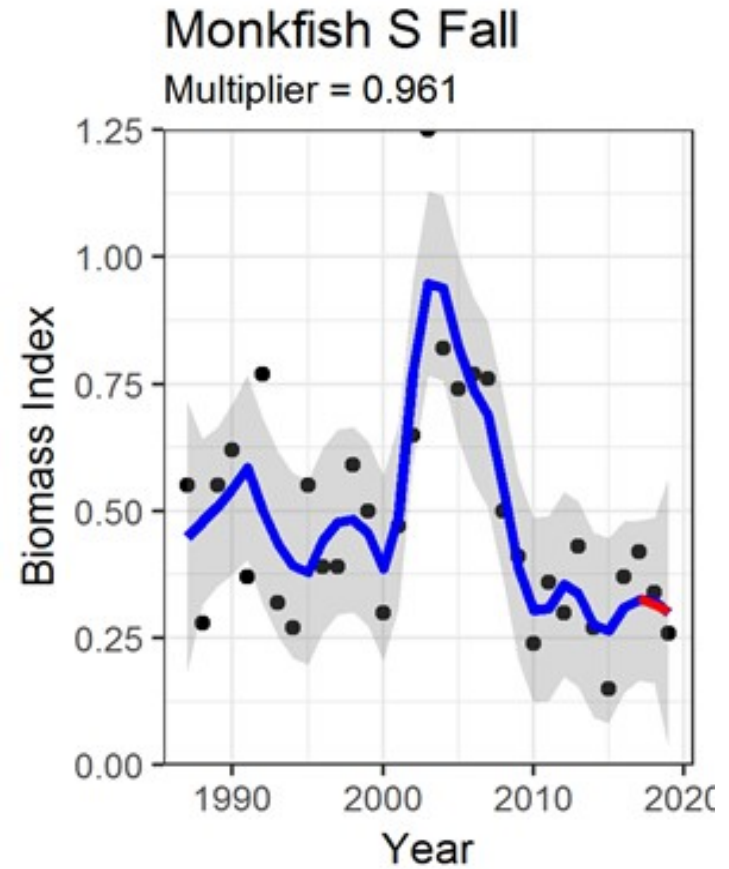
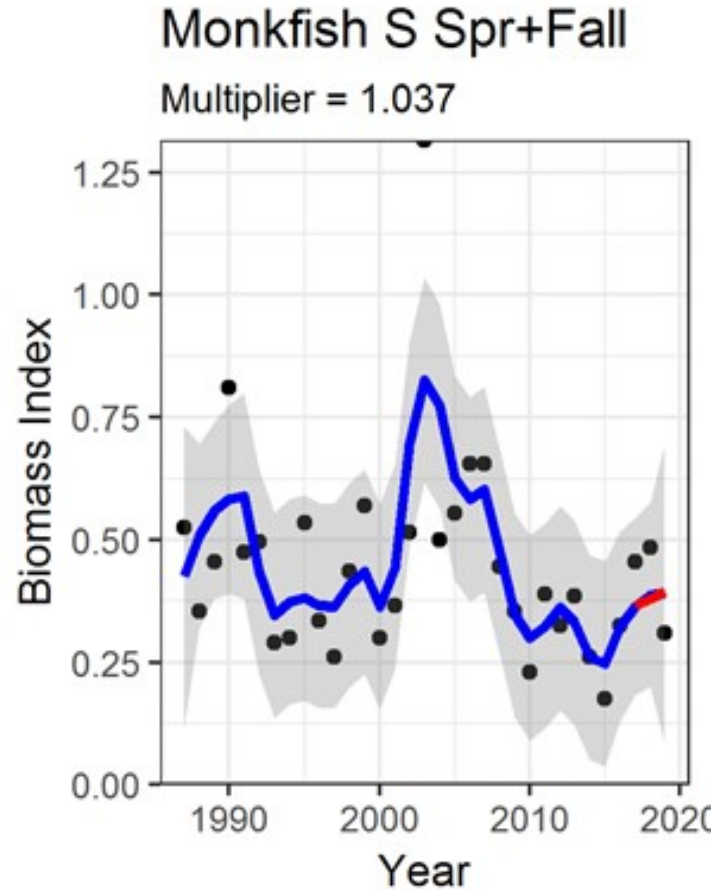


Monkfish North Fall

Multiplier = 1.255



Southern multiplier



Specifications for FYs 2020-2022

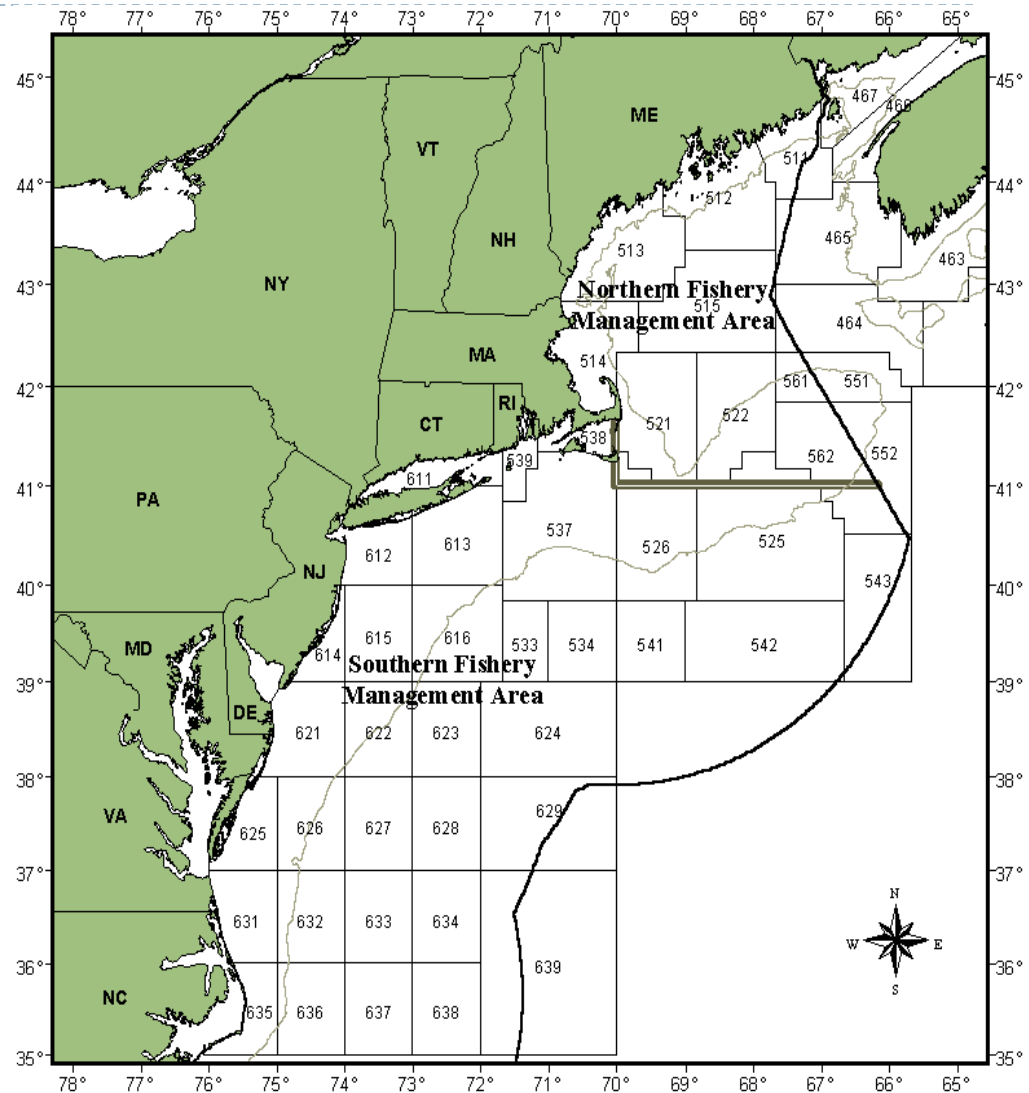
- ▶ **Revised Annual Catch Limits**
 - ▶ Alternative 2: Sets specs and updates discard rate in the NFMA
 - ▶ Alternative 3: Sets specs and updates discard rate in the SFMA
- ▶ **No changes to effort controls proposed by the PDT**



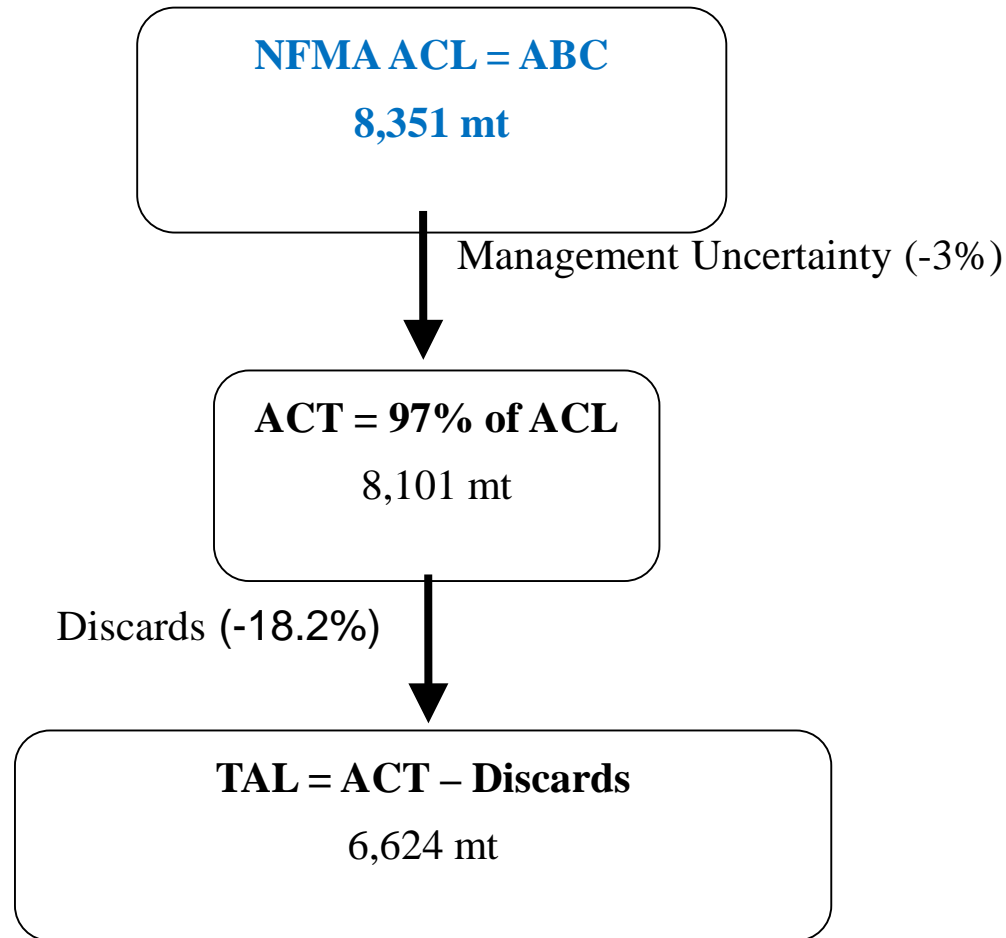
Status Quo Specifications

► Specifications

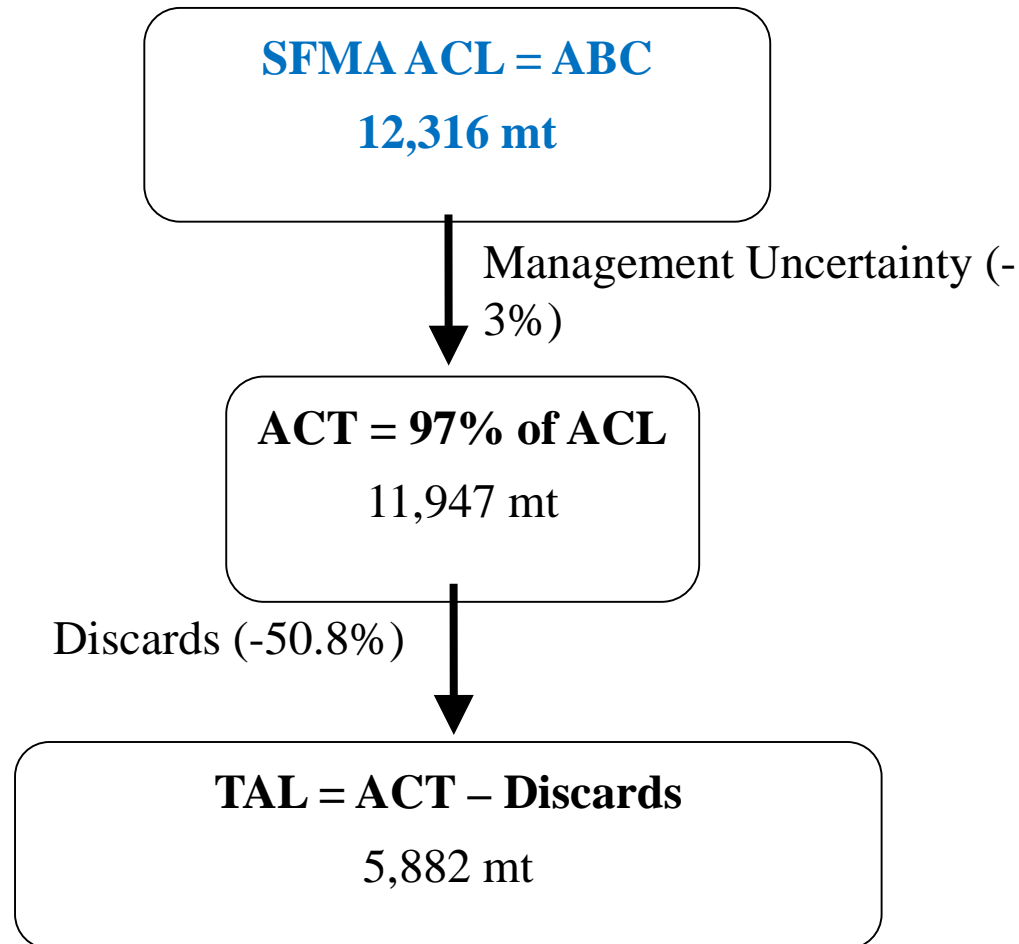
- NFMA OFL = 17,805 mt
- NFMA ABC = 7,592 mt
- SFMA OFL = 23,204 mt
- SFMA ABC = 12,316 mt



Revised Specifications - NFMA



Revised Specifications - SFMA



Alternative approaches -NFMA

| | ABC | ACT | TAL | Estimated Discards | % Difference in TAL from status quo |
|--|------------|------------|------------|---------------------------|--|
| Status quo | 7,592 | 7,364 | 6,338 | 1,026 | 0% |
| Plan B adjustment factor (20%) | 9,110 | 8,837 | 7,226 | 1,610 | 13% |
| PDT recommended adjustment factor (10%) | 8,351 | 8,101 | 6,624 | 1,477 | 4.4% |



Alternative approaches - SFMA

| | ABC | ACT | TAL | Estimated Discards | % Difference in TAL from status quo |
|---------------------------|------------|------------|------------|---------------------------|--|
| Status quo | 12,316 | 11,947 | 9,011 | 2,936 | 0% |
| PDT recommendation | 12,316 | 11,947 | 5,882 | 6,064 | -42% |

NFMA – recent fishery performance

| NMFA | | | |
|---------------------|----------------------|-----------------|--------------------------------|
| Fishing Year | Landings (mt) | TAL (mt) | Percent of TAL achieved |
| 2014 | 3,403 | 5,854 | 58 |
| 2015 | 4,080 | 5,854 | 70 |
| 2016 | 5,447 | 5,854 | 93 |
| 2017 | 6,807 | 6,338 | 107 |
| 2018 | 6,168 | 6,338 | 97 |



SFMA – recent fishery performance

| SMFA | | | |
|---------------------|----------------------|-----------------|--------------------------------|
| Fishing Year | Landings (mt) | TAL (mt) | Percent of TAL achieved |
| 2014 | 5,415 | 8,925 | 61 |
| 2015 | 4,733 | 8,825 | 53 |
| 2016 | 4,345 | 8,925 | 49 |
| 2017 | 3,802 | 9,011 | 42 |
| 2018 | 4,600 | 9,011 | 51 |



Impacts

| | Habitat Impacts | Allocated Target Species | Non-allocated Target Species and Bycatch | Endangered/Protected Species | Human Community Impacts |
|-----------------------|-----------------|--------------------------|--|------------------------------|--------------------------|
| ACL | Neutral | Neutral | Neutral | Low negative to neutral | Neutral to low positive |
| Effort Controls: NFMA | Neutral | Neutral to low positive | Neutral | Low negative | Neutral to low positive |
| Effort Controls: SFMA | Neutral | Neutral to low positive | Neutral | Low negative | Low positive to positive |

