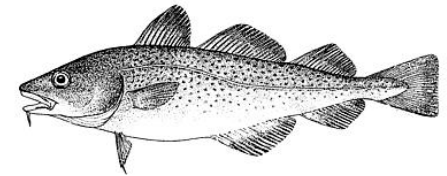
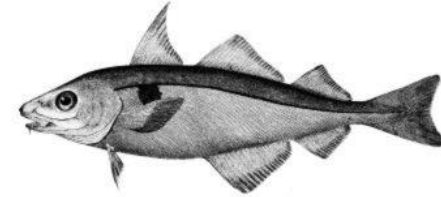
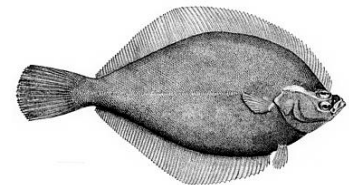
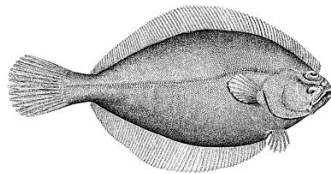
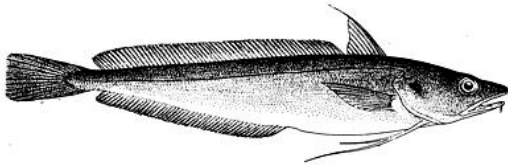


# Development of Framework 51 to the Multispecies FMP

Jamie Cournane, PhD  
Council staff



*Groundfish Oversight Committee  
Meeting  
November 19, 2013*



# Outline

- ❖ **Brief update on Council request to SSC on GOM haddock**
- ❖ **Review of FW 51 timeline**
- ❖ **Overview of alternatives under consideration**
- ❖ **Brief update on impacts analysis**
- ❖ **Planning for next GF OSC meeting**



# PDT Report to the SSC on November 15

The **PDT** focused on:

- **Examining additional survey and fishery-dependent information** since the 2012 GOM haddock assessment,
- **Comparing two methods of estimating t+1 abundance** for use in catch projections, and
- **Revisiting the projections** for the original GOM haddock ABCs including a **consequence analysis**.



# Projections

1

2

3

4

Catches	Current	Updated Catch	Updated Catch	Updated Catch
Assumption	Recruitment-Geo-mean	Recruitment-Geo-mean	Recruitment-Direct estimate t+1	Constant Catch-2014 level

- Projections 1-3 assume 75%Fmsy from 2013-2015
- Projection 4 is based on a constant ABC
- 2011 and 2012 are bridge year catch assumptions
- F's after 2015 are assumed to be at 75%Fmsy



# ABCs/OFLs

## ABCs

1

2

3

4

<b>Catches</b>	Current	Updated Catch	Updated Catch	Updated Catch
<b>Assumption</b>	Recruitment-Geo-mean	Recruitment-Geo-mean	Recruitment-Direct estimate t+1	Constant Catch-2014 level
2013	290	290	388	342
2014	341	342	544	342
2015	435	435	823	342

## OFLs

1

2

3

4

<b>Catches</b>	Current	Updated Catch	Updated Catch	Updated Catch
<b>Assumption</b>	Recruitment-Geo-mean	Recruitment-Geo-mean	Recruitment-Direct estimate t+1	Constant Catch-2014 level
2013	371	371	501	371
2014	440	440	705	425
2015	561	561	1,063	546

OFL, as defined in Amendment 16, is an  $F_{MSY}$  proxy of F40% MSP



# PDT Consensus Statement Excerpt

Based on the review of recent survey information, comparison of t+1 estimates, and consequence analysis, the PDT recommends no change to the current 2013-2015 ABCs/OFLs until the next assessment is available.



# Timeline

<b>2013</b>	Jun	Council initiates FW51
	Jul-Sep	Develop measures
	Sep	Council selects measures to include in FW51
	Sep-Dec	Develop NEPA analysis
	Dec	Council takes final action on FW51



# 4. Alternatives

## REGULATORY REQUIREMENTS

### 4.1

- Revising the GOM cod rebuilding plan
- Revising the American plaice rebuilding plan
- Specifications: white hake and US /CA TACs (GB yellowtail flounder, EGB cod, EGB haddock)

## MANAGEMENT MEASURES

### 4.2

- Small-mesh fishery AMs for GB yellowtail flounder sub-ACL
- Small-mesh fishery management measures
- RA authority for in-season US/CA adjustment
- GB yellowtail flounder discard strata
- Zero retention of yellowtail flounder in the scallop fishery





## 4.1 Updates to Rebuilding and ACLs

- **Revising the GOM cod rebuilding plan**
- **Revising the American plaice rebuilding plan**
- **Specifications for white hake**
- **US/CA TACs (GB yellowtail flounder, EGB cod, EGB haddock)**



# 4.1.1 GOM Cod Rebuilding Plan

## 4.1.1.1 Option 1: No Action

## 4.1.1.2 Option 2: Revised rebuilding strategy

- **Sub-Option A:** The rebuilding strategy would be to rebuild the stock with a 50 % (median) probability of success by 2022. *8-year plan*
- **Sub-Option B:** The rebuilding strategy would be to rebuild the stock with a 50% (median) probability of success by 2024. *10-year plan*



# 4.1.1.3 GOM cod rebuilding plan analysis

*To be selected in conjunction with an option under 4.1.1.2 Option 2*

## **4.1.1.3 Option 3:** Rebuilding plan review analysis for GOM cod

**Sub-Option A:** No Action

**Sub-Option B:** An administrative measure that would establish a rebuilding plan review analysis specific for GOM cod, under certain conditions



# 4.1.2 American plaice rebuilding plan

## 4.1.2.1 Option 1: No Action

## 4.1.2.2 Option 2: Revised rebuilding strategy

- **Sub-Option A:** The rebuilding strategy would be to rebuild the stock with a 50% (median) probability of success by 2021. *7-year plan*
- **Sub-Option B:** The rebuilding strategy would be to rebuild the stock with a 50% (median) probability of success by 2022. *8-year plan*
- **Sub-Option C:** The rebuilding strategy would be to rebuild the stock with a 50% (median) probability of success by 2024. *10-year plan*



# 4.1.2.3 Am. plaice rebuilding plan analysis

*To be selected in conjunction with an option under 4.1.2.2 Option 2*

## **4.1.2.3 Option 3:** Rebuilding plan review analysis for American plaice

**Sub-Option A:** No Action

**Sub-Option B:** An administrative measure that would establish a rebuilding plan review analysis for American plaice, under certain conditions



## 4.1.3 Annual catch limits

### 4.1.3.1 Option 1: No Action

### 4.1.3.2 Option 2: Annual specifications for FY2014 through FY2015

- White hake
- Eastern Georges Bank cod
- Eastern Georges Bank haddock
- Georges Bank yellowtail flounder



## 4.2 Commercial Fishery Measures

- **Small-mesh fishery accountability measures**
- **Small-mesh fishery measures**
- **Management measures for US/CA TACs**
- **GB YTF management measures**
- **Possession of yellowtail flounder by the scallop fishery**



# 4.2.1 Small-Mesh Fishery AMs

## 4.2.1.1 Option 1: No Action

## 4.2.1.2 Option 2: AM for small-mesh fishery GB YTF sub-ACL

**Sub-Option A:** If the sub-ACL is zero or not specified, then there would be no fishing in the GB YTF stock area

**Sub-Option B1:** If the total ACL and sub-ACL were exceeded, then a gear modification would be required to fish in the GB YTF stock area

**Sub-Option B2:** If the sub-ACL was exceeded, then a gear modification would be required to fish in the GB YTF stock area





## 4.2.1 Small-Mesh Fishery Measures

**4.2.2.1 Option 1: No Action**

**4.2.2.2 Option 2: Call-in requirement for small-mesh fisheries through PTNS**



## 4.2.3. Management measures for US/CA TACs

### 4.2.3.1 Option 1: No Action

### 4.3.3.2 Option 2: Revised in-season adjustment for US/CA TACs

- The Regional Administrator would be allowed to adjust the US/CA quotas during the FY (i.e., after allocations were made).
- Additional quota would be allocated consistent with the current ABC distribution.
- The RA would not have the authority to change the allocations to the sub-ACLs during the FY.



# 4.2.3. Management measures for US/CA TACs

## 4.2.3.3 Option 3: Revised in-season adjustment for US/CA TACs

- If this option is adopted, the Regional Administrator would be allowed to adjust the US/CA quotas during the FY (i.e., after allocations were made).
- Additional quota would be distributed consistent with the sector sub-ACL distribution.

## 4.2.3.4 Option 4: Revised in-season adjustment for US/CA TACs

- If this option is adopted, the Regional Administrator would be allowed to make transboundary quota trades only with components of the fishery trading away their quota.
- Groundfish quota traded would go only to groundfish fishery
- Individuals trading quota away would directly receive quota in return.



## 4.2.3. Management measures for US/CA TACs

### 4.2.3.5 Option 5: Distribution of US TACs for Eastern/Western GB haddock

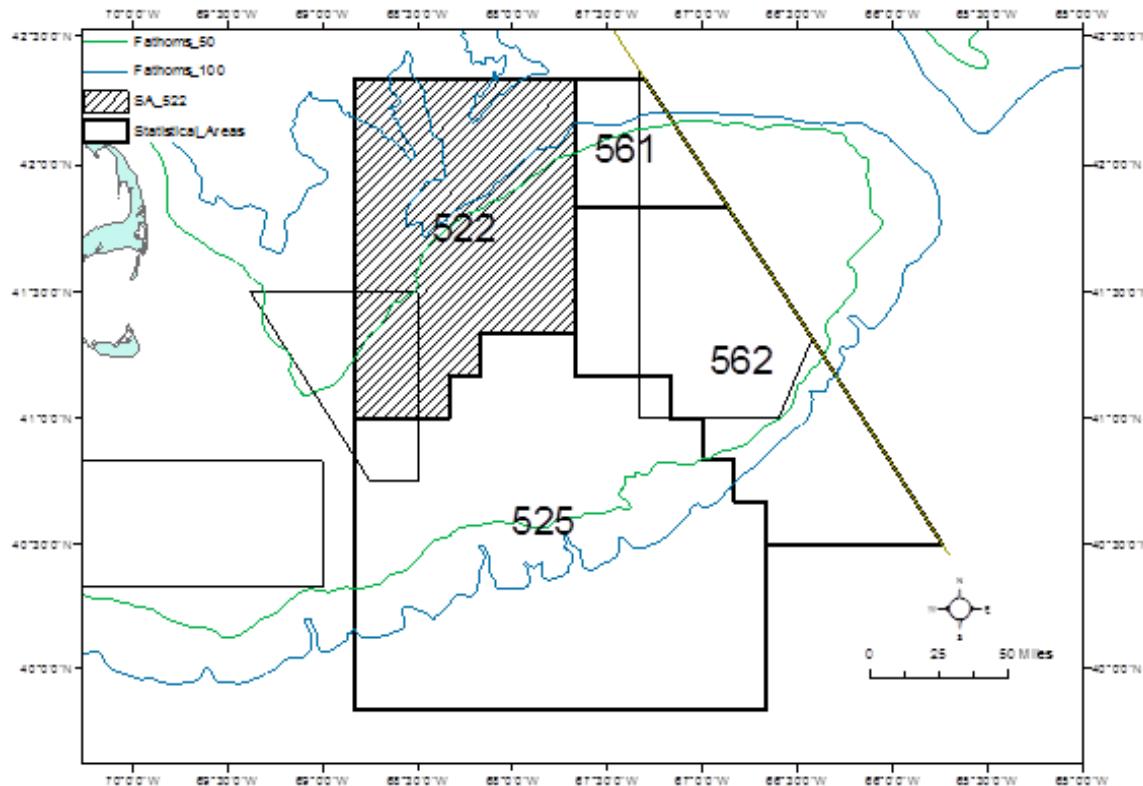
- Regional Administrator in consultation with Council would be allowed to adjust the portion of the US TAC for Eastern GB haddock that is available in the Eastern US Canada area
- It would not change other existing requirements.



# 4.2.4 GB YTF Management Measures

## 4.2.4.1 Option 1: No Action

## 4.2.4.2 Option 2: Revised discard strata for GB YTF



## 4.2.5 Possession of YTF by scallop fishery

**4.2.5.1 Option A:** No Action

**4.2.5.2 Option B:** Prohibition on possession of yellowtail flounder (GB and SNE/MA) by the limited access scallop fishery



# Update on Impacts Analysis

## **COMPLETED**

### Impacts of 4.1 Alternatives

- Protected Species
- Social

## **IN-PROGRESS**

### Impacts of 4.1 Alternatives

- Biological
- Habitat
- Economic

### Impacts of 4.2 Alternatives (all sections)



# Planning for Next GF OSC Meeting

- Meeting on December 9<sup>th</sup> in Providence
- Review of impacts analysis
- Potentially select preferred alternatives

