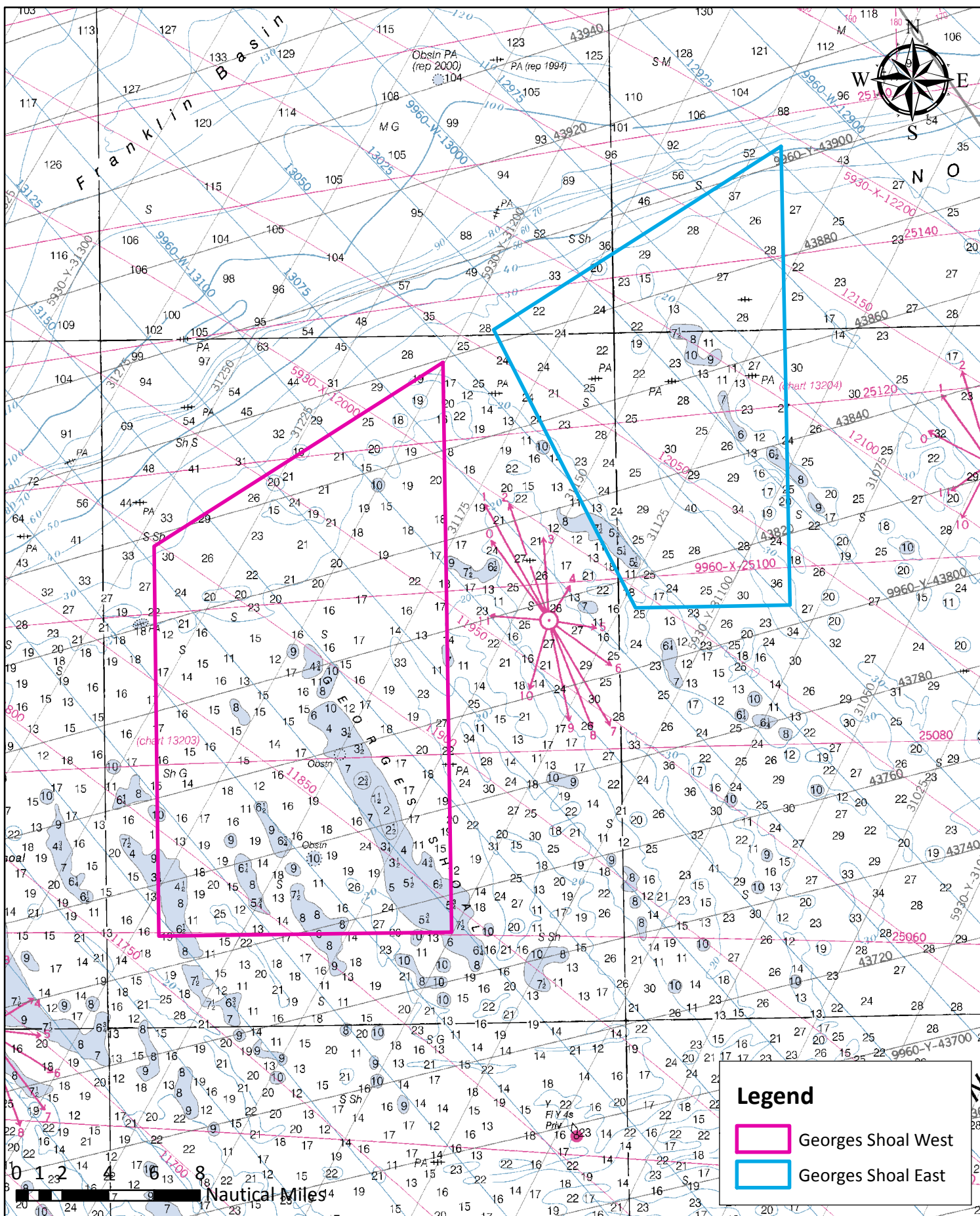


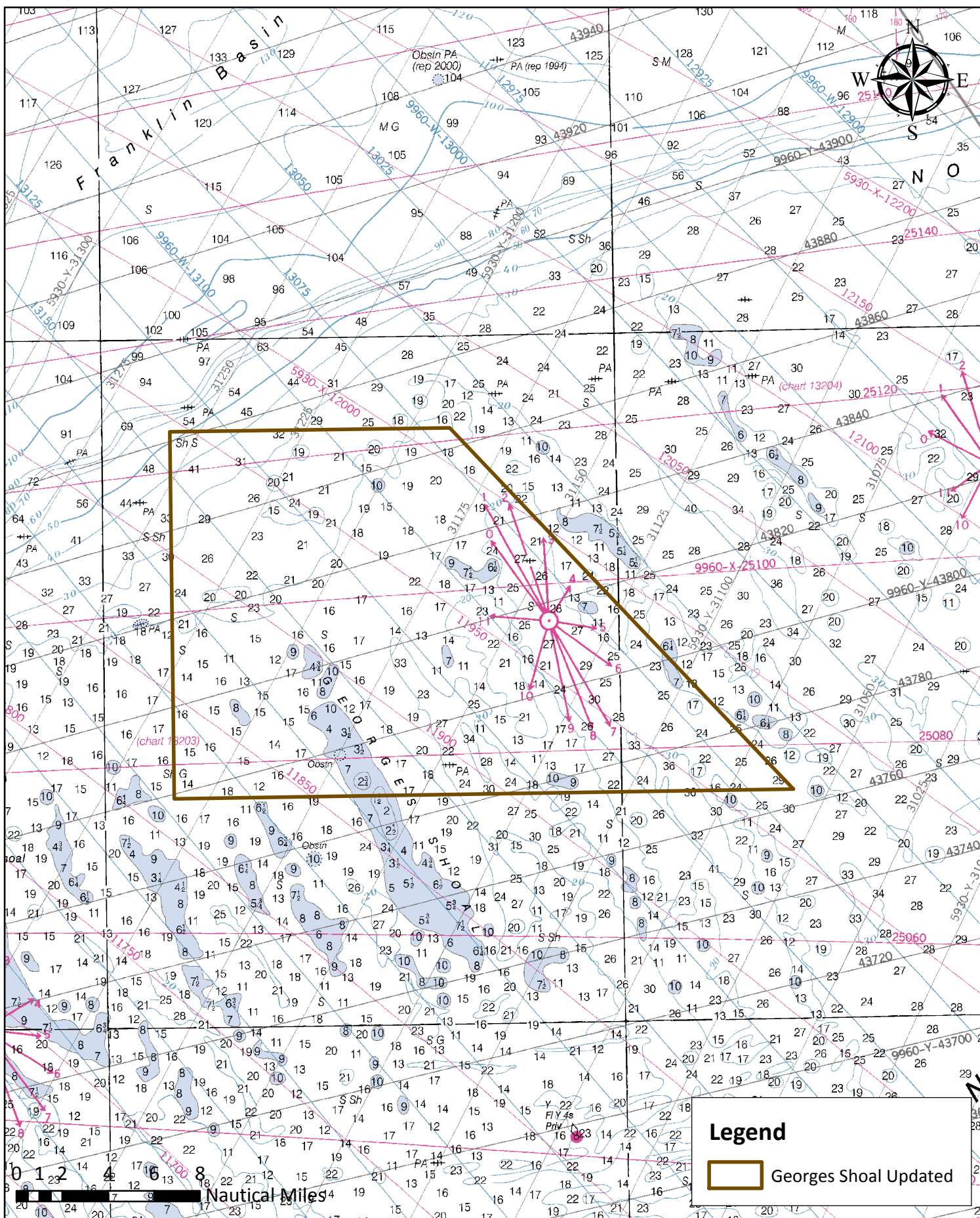
Omnibus Essential Fish Habitat Amendment 2:
Habitat Management Areas where no-ground cable trawl gears might
be required

These are draft options under development by the Habitat and Groundfish Committees. Some or all of these options may be approved for analysis in the Omnibus EFH Amendment 2 Draft Environmental Impact Statement. The Council is scheduled to review and approve alternatives for analysis on June 19, 2013.

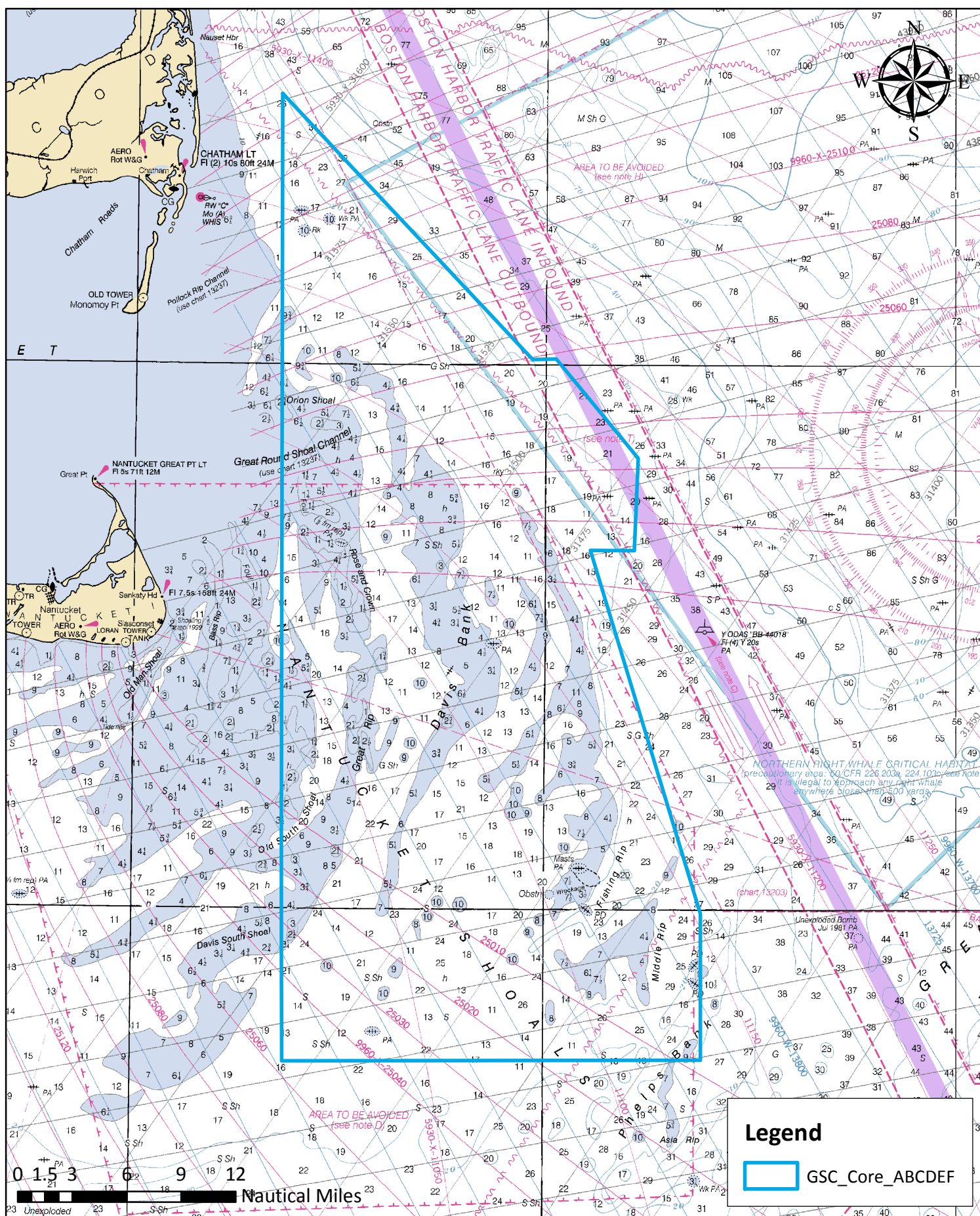
Georges Shoal East and West - added by Habitat Committee on August 30, 2011.



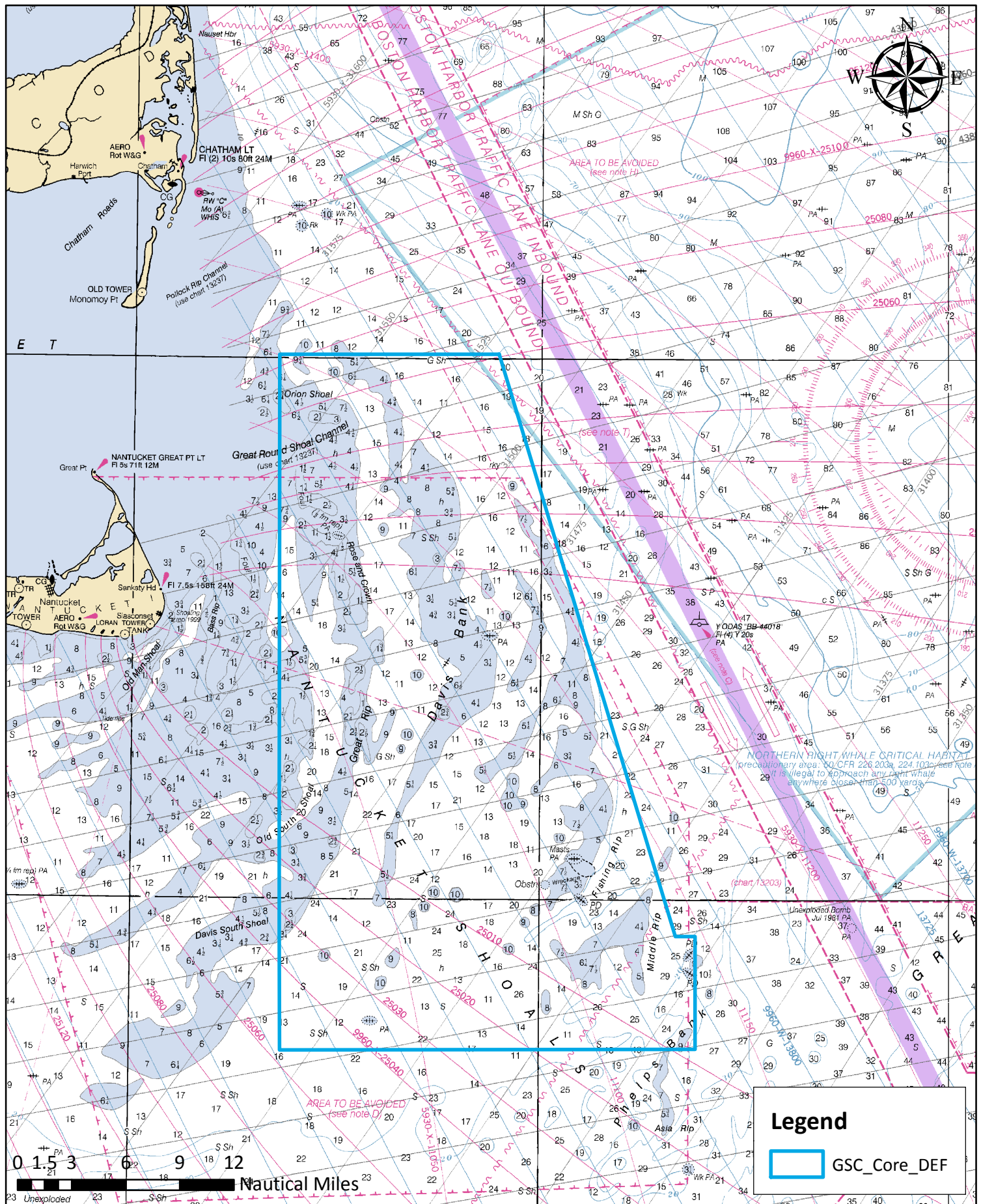
Georges Shoal updated area - added by Joint Habitat and Groundfish Committee on May 17, 2013.



Great South Channel HMA Option 1 - added by Habitat Committee on March 19, 2013.



Great South Channel HMA Option 3 - added by Habitat Committee on March 19, 2013.



Nantucket Shoals HMA - added by Joint Habitat and Groundfish Committee on May 17, 2013

