

# SSC Report to NEFMC

Newport, RI  
November 16, 2016

Jake Kritzer, SSC Chair

# Agenda

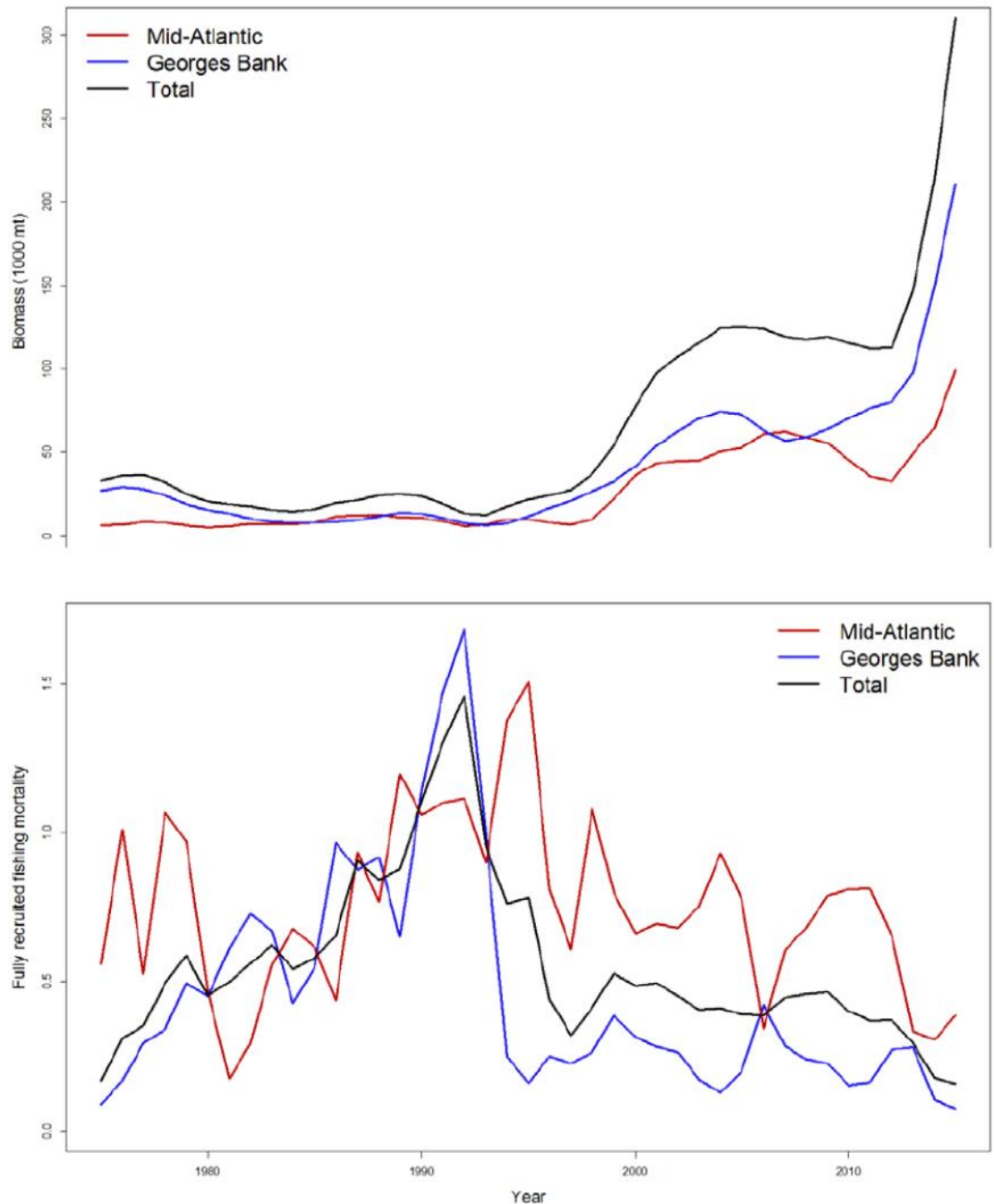
- Develop OFL and ABC recommendations for sea scallops for fishing years 2017 and 2018.
- Discuss recommendations for improving the ABC control rule for groundfish.

# Sea Scallop TORs

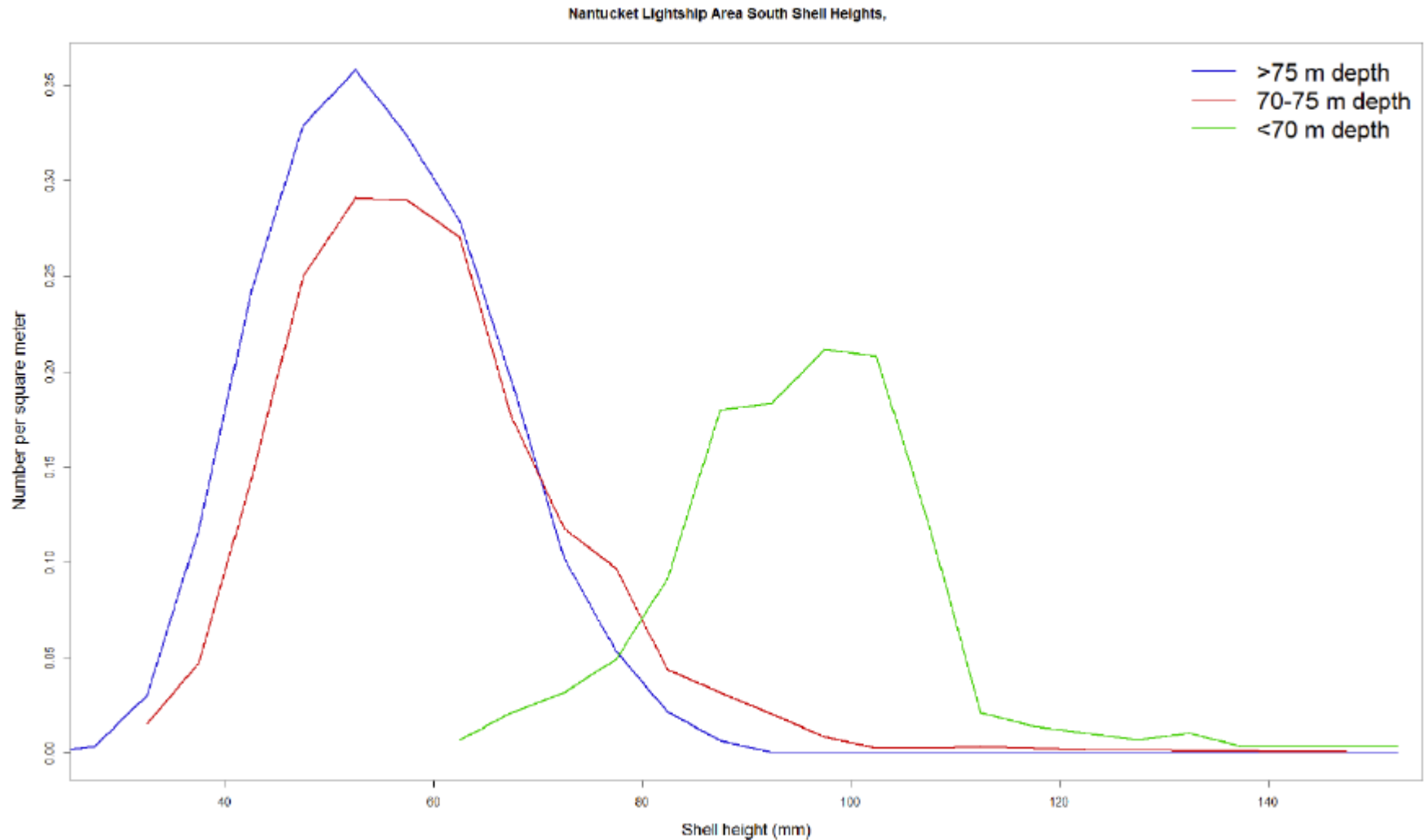
1. Review the work of the Scallop PDT on updated projections for the scallop resource and provide the Council with OFL and ABC recommendations for fishing years 2017 and 2018 (default).
2. Review changes to the growth and meat weight parameters used to estimate and model biomass in portions of the Nantucket Lightship area, and provide the Council with a recommendation as to whether or not these changes are appropriate.

# Sea Scallop Status

- Biomass remains high;  $F$  remains low
- High biomass means high densities & settlement in new areas
- Potential to overestimate productivity?

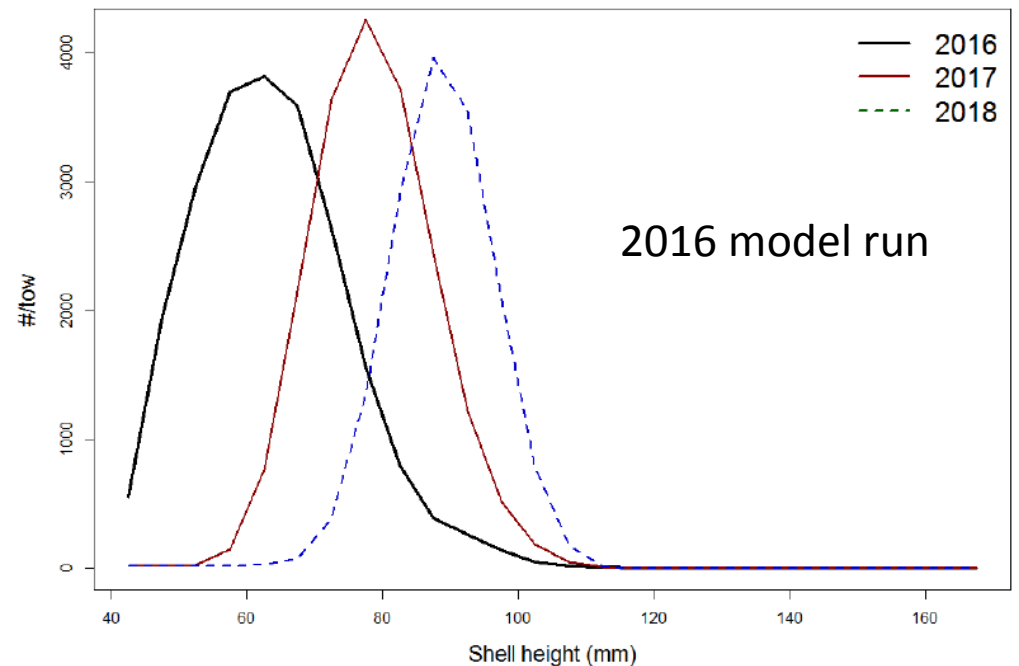
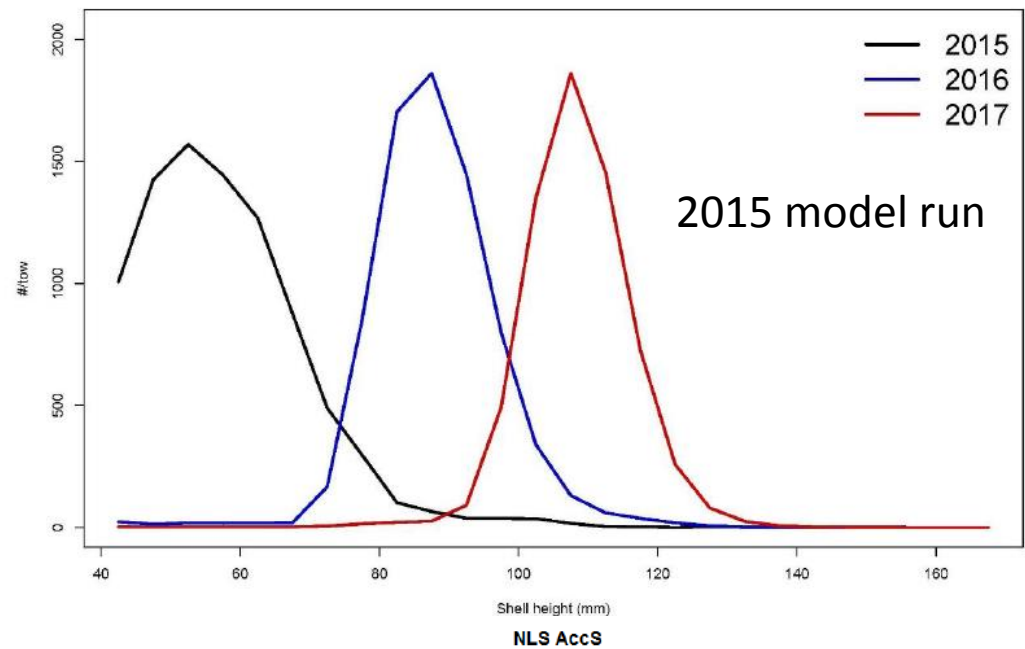


# Size Frequency in NLS Access South



# Projected Stock Structure

- Accounting for growth differences changes stock projections.
- Stock still assumed to grow.



# Recommendations

- Adopt PDT's proposed growth parameters for 2017 and 2018 (default) catch advice for current specifications; revisit in the future based on additional research, monitoring and analysis.
- Hold 2018 (default) at 2017 value, with expectation it will be adjusted.
- Prorate 2017 recommendations by adding up to  $1/12^{\text{th}}$  of the 12-month value to derive 13-month values; no adjustment for 2018 (default).

# Recommendations

Year	ABC_Land	ABC_Disc	ABC_Tot	OFL_Land	OFL_Disc	OFL_Tot
2017 (12-month)	43,142	13,850	56,992	52,184	17,494	69,678
2017 (13-month)	46,737	15,004	61,741	56,533	18,952	75,485
2018 (default)	43,142	13,850	56,992	52,184	17,494	69,678



# Recommendations

- Investigate alternative approaches for weighting the three surveys and report during 2017 specification-setting.
- Provide additional information to SSC on model settings, diagnostics, supplementary analyses, new data, etc., in light of limited peer review between benchmarks.
- Consider additional layer of peer review beyond SSC.

# Groundfish ABC Control Rule Context

- Catch within ACLs often revealed by later stock assessment to still have resulted in overfishing.
- Recent progress on staying within F limits, but biomass recovery is slow for many stocks.
- Measurable ecosystem change underway, climate-driven and otherwise.
- Continued model performance problems, esp. retrospective patterns and optimistic projections.
- Series of recent analyses investigating these issues, plus SSC discussions prioritizing and developing recommendations.
- Control rule needs to be reconciled with revisions to National Standard guidelines.

# SSC Recommendation

- **The should Council adopt as a priority for 2017 a thorough and systematic re-evaluation and, as warranted, revision of the ABC control rule for groundfish.**

# Specific Questions to Consider

- Adopt tiered approach?
- Change from fixed-F/step function to ramped or sloped function?
- Conditions under which different “plan B” approaches should be used?
- Incorporation of environmental data into models and/or development of catch advice?
- Changes in survey indices prompting a change in catch advice?

# Specific Questions to Consider

- Balancing consistency with flexibility?
- Criteria under which model-based estimates and projections should be used?
- How to effectively use information from multiple models?
- Incorporation of risk evaluation matrices from RPWG?
- Use of management strategy evaluation (MSE)?
- New data and analyses to understand retrospective patterns? Appropriate responses in the meantime?

**THANKS!**  
**QUESTIONS?**